

E2-006

E2-003

E2-005

E2-002

E2-004

E2-001

EITC E3
233

EITC E2
232

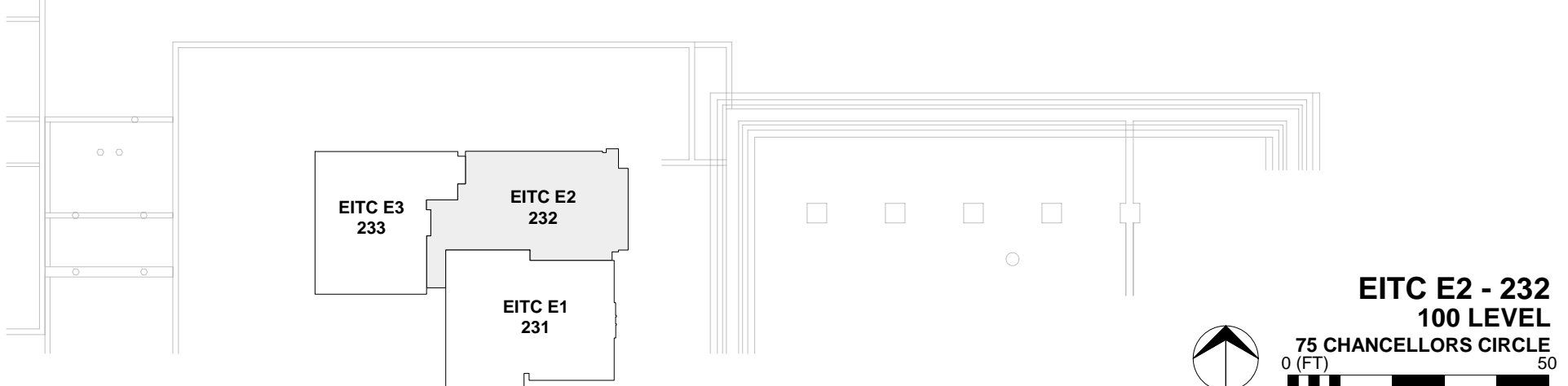
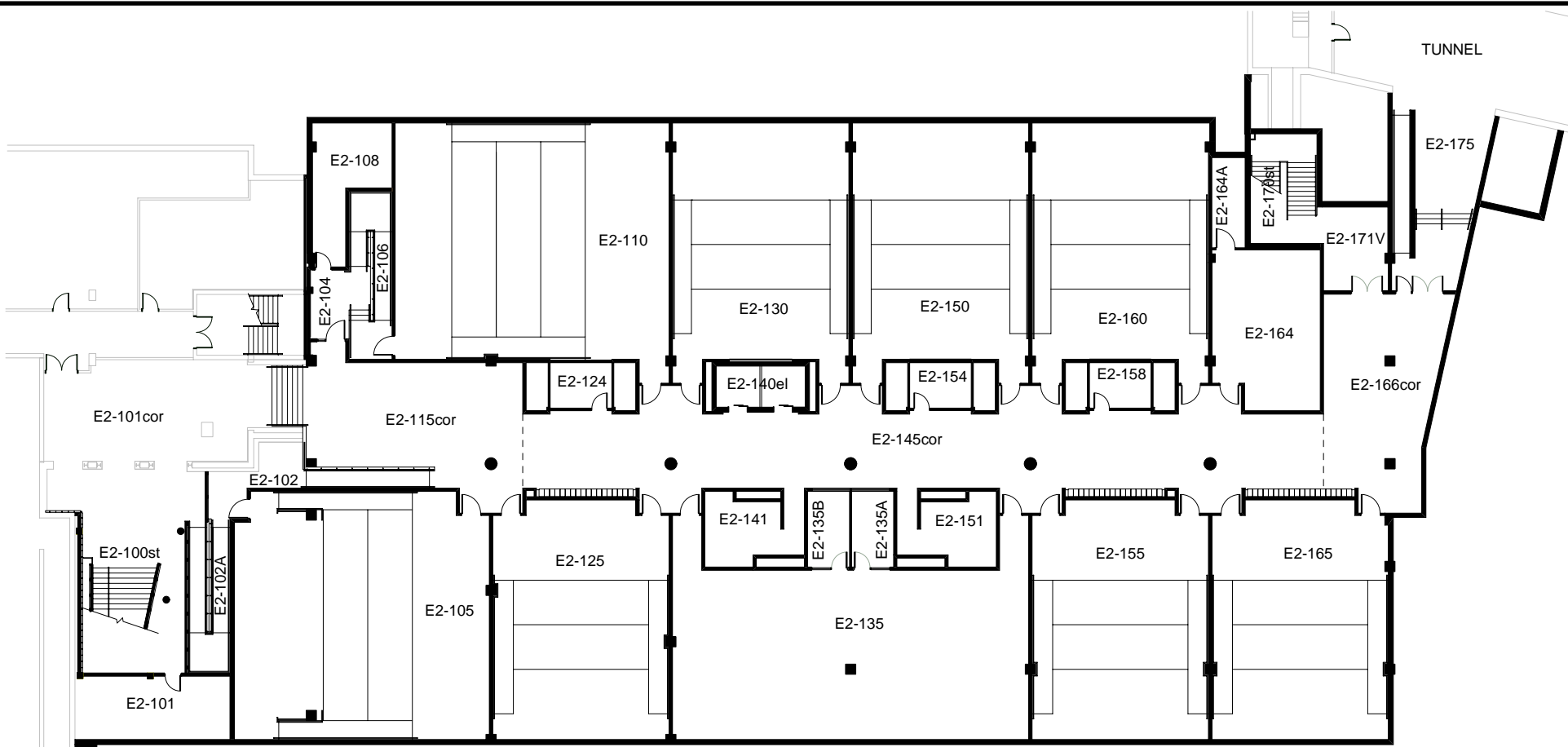
EITC E1
231

**EITC E2 - 232
000 LEVEL**

75 CHANCELLORS CIRCLE
0 (FT) 50



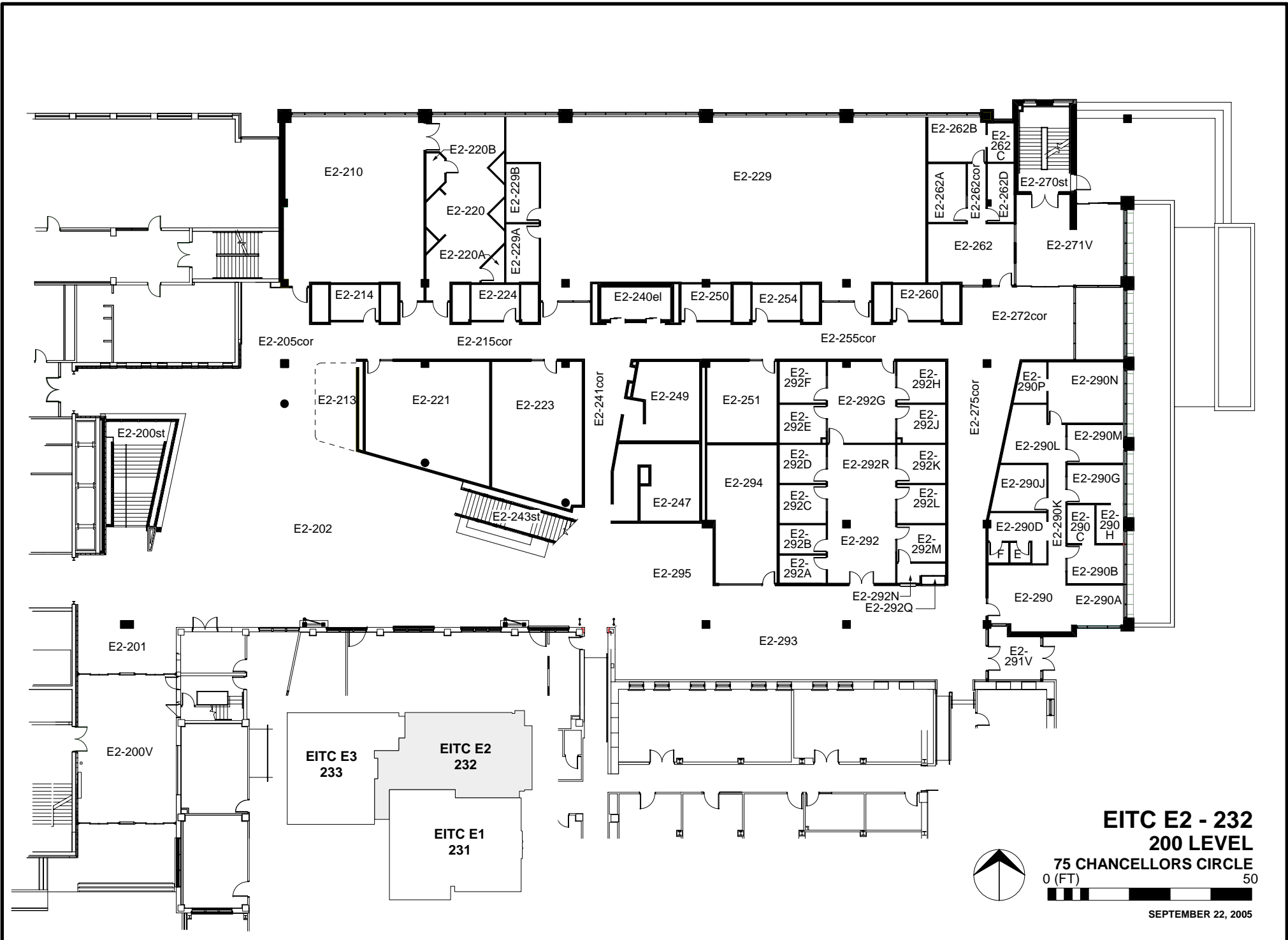
SEPTEMBER 22, 2005



**EITC E2 - 232
100 LEVEL**

75 CHANCELLORS CIRCLE
0 (FT) 50

SEPTEMBER 22, 2005



EITC E2 - 232
200 LEVEL

75 CHANCELLORS CIRCLE
 0 (FT) 50





EITC E2 - 232
300 LEVEL

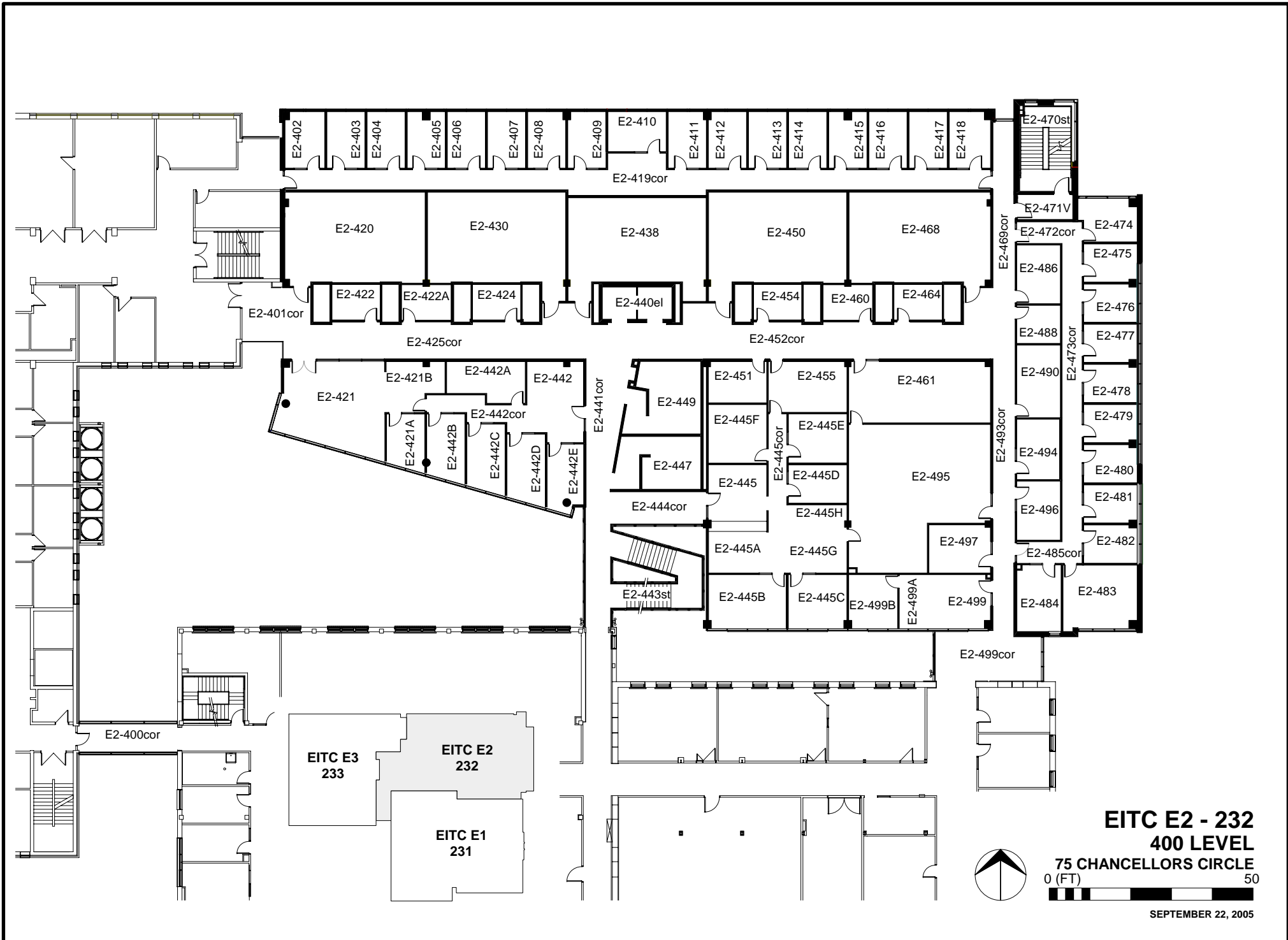
75 CHANCELLORS CIRCLE
 0 (FT) 50





EITC E2 - 232
300 LEVEL

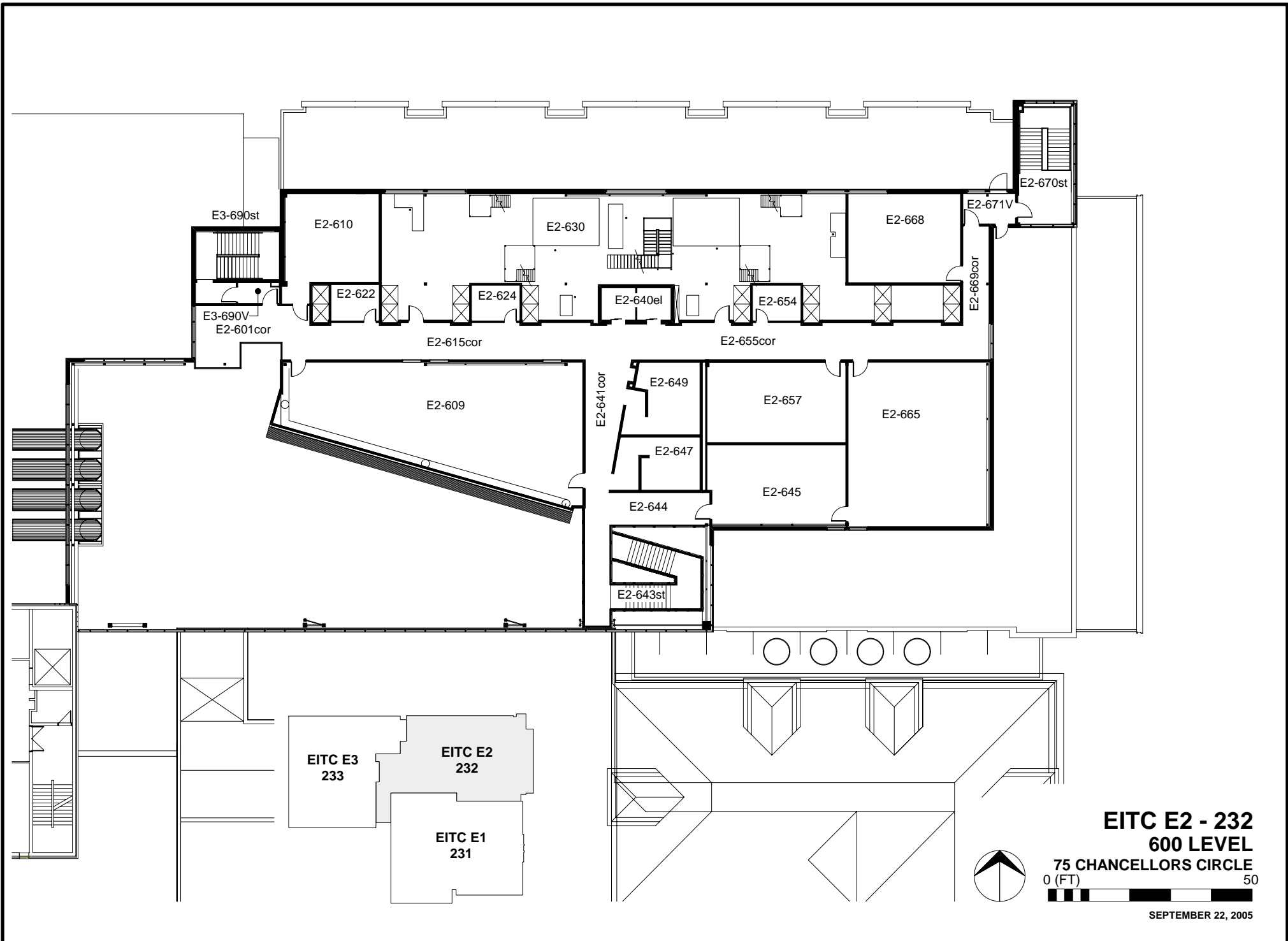
75 CHANCELLORS CIRCLE
0 (FT) 50





EITC E2 - 232
500 LEVEL
 75 CHANCELLORS CIRCLE
 0 (FT) 50

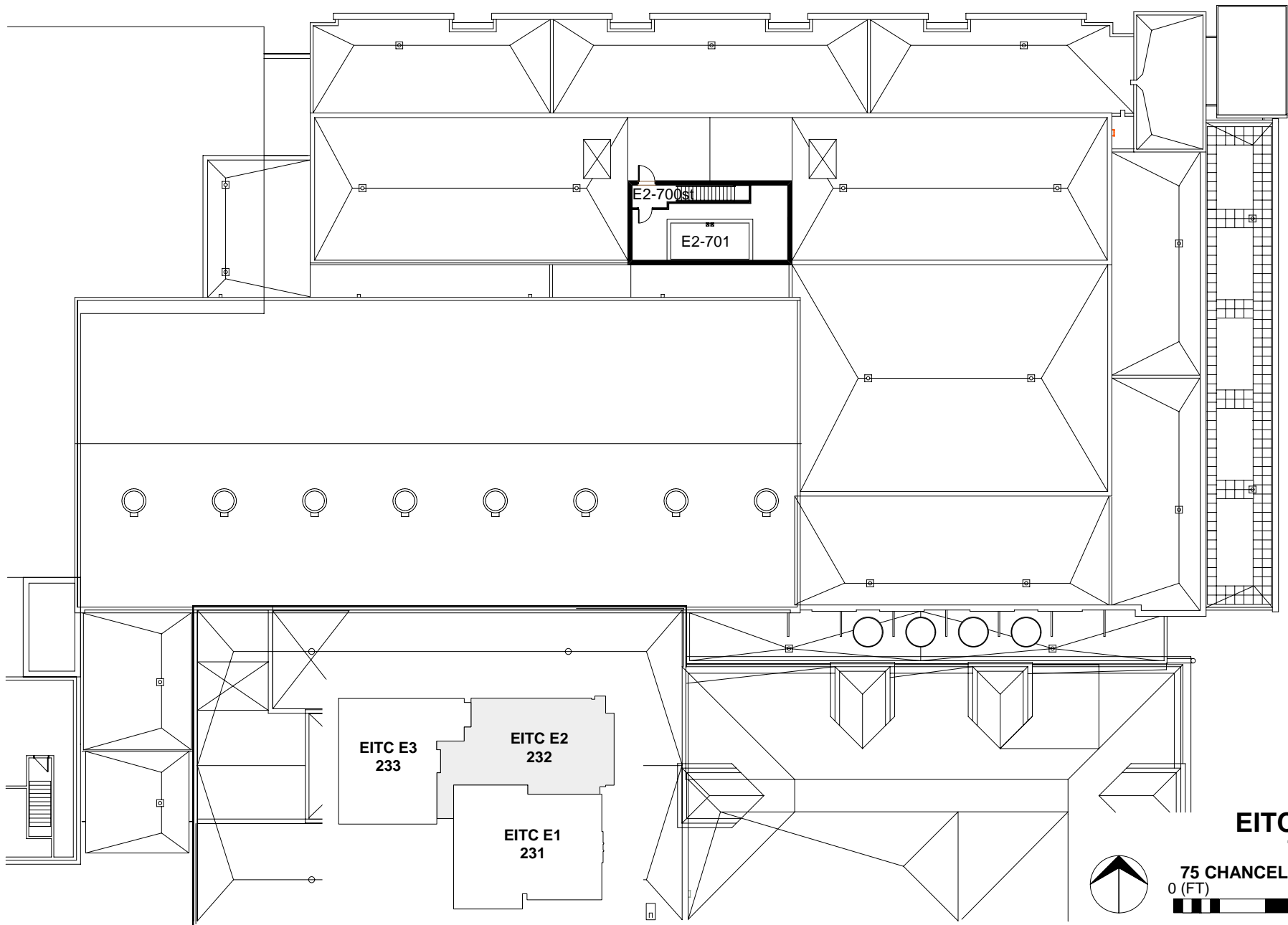
SEPTEMBER 22, 2005



EITC E2 - 232
600 LEVEL

75 CHANCELLORS CIRCLE
 0 (FT) 50

SEPTEMBER 22, 2005



**EITC E2 - 232
700 LEVEL**

75 CHANCELLORS CIRCLE
0 (FT) 50

JANUARY 17, 2006