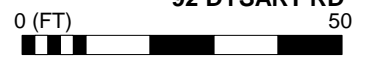
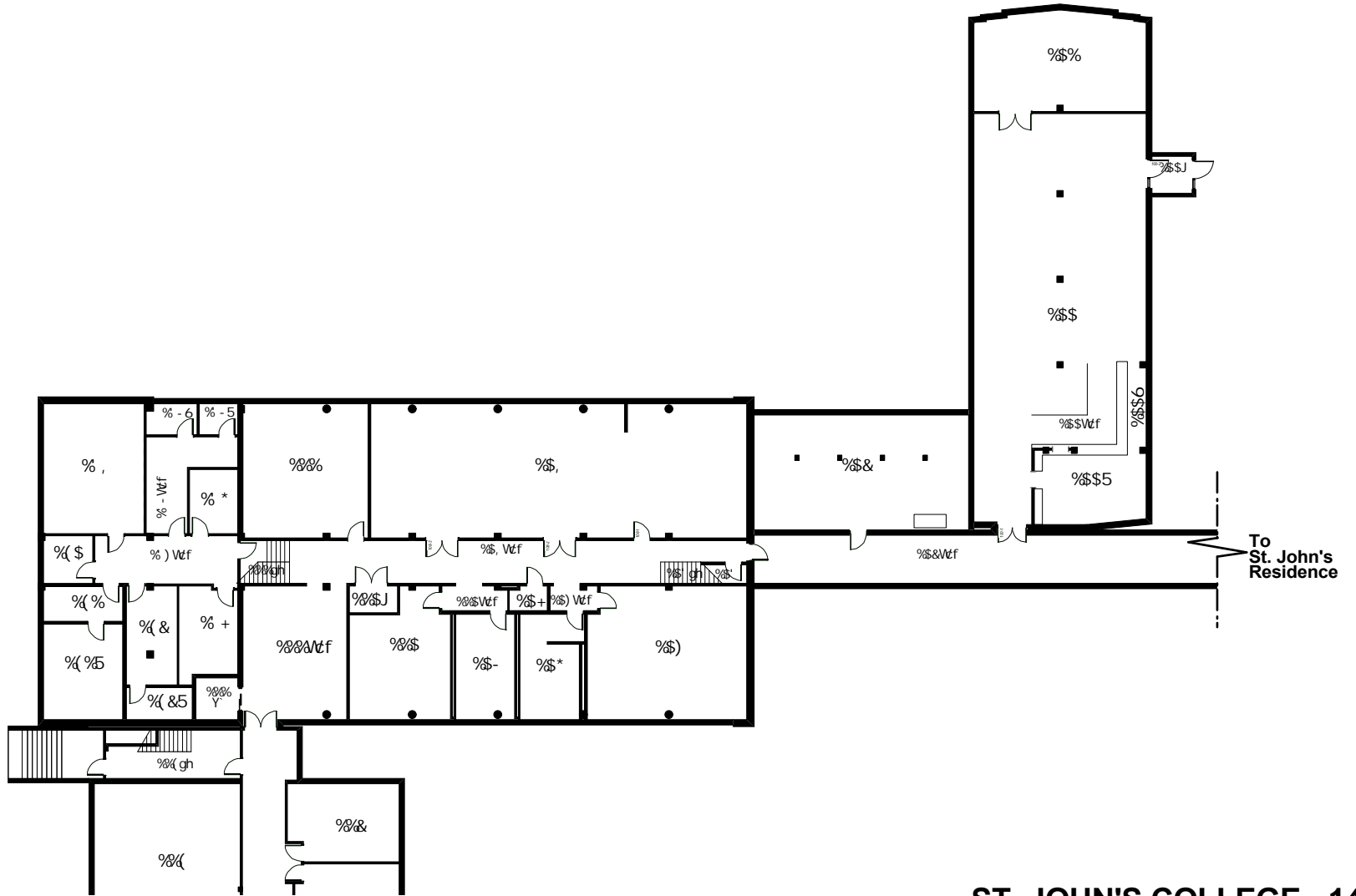
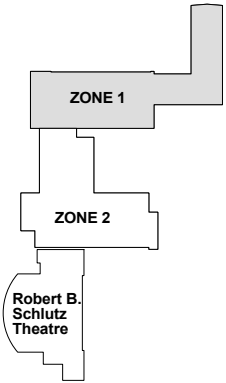


ST. JOHN'S COLLEGE - 141
000 LEVEL - ZONE 2
92 DYSART RD



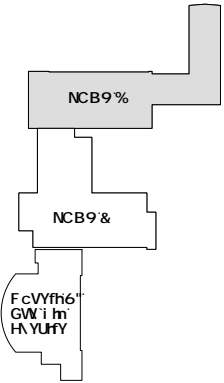
DECEMBER 18, 2006



ST. JOHN'S COLLEGE - 141
100 LEVEL - ZONE 1
 92 DYSART ROAD

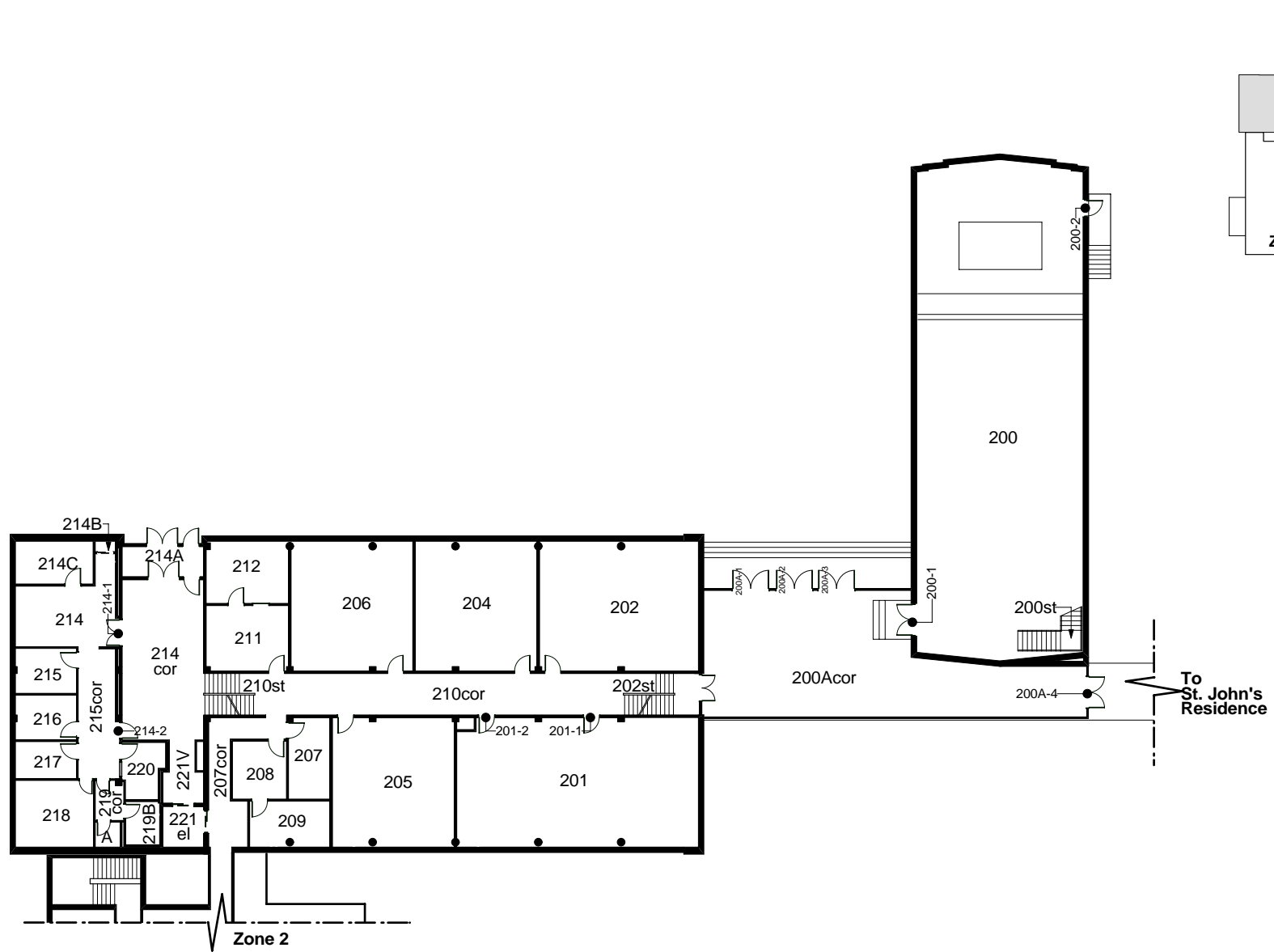


DECEMBER 20, 2012



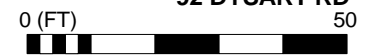
GH">C<BfG'7C@@9; 9!'%(%)
 \$\$\$@9J 9@! NCB9%
 -&8MG5F HF C58
 \$ fl HL)\$

8979A69F '8\$Z&\$%&

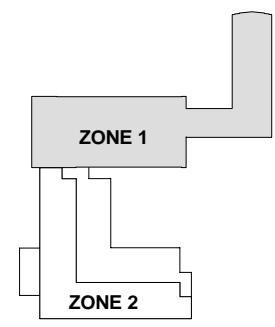
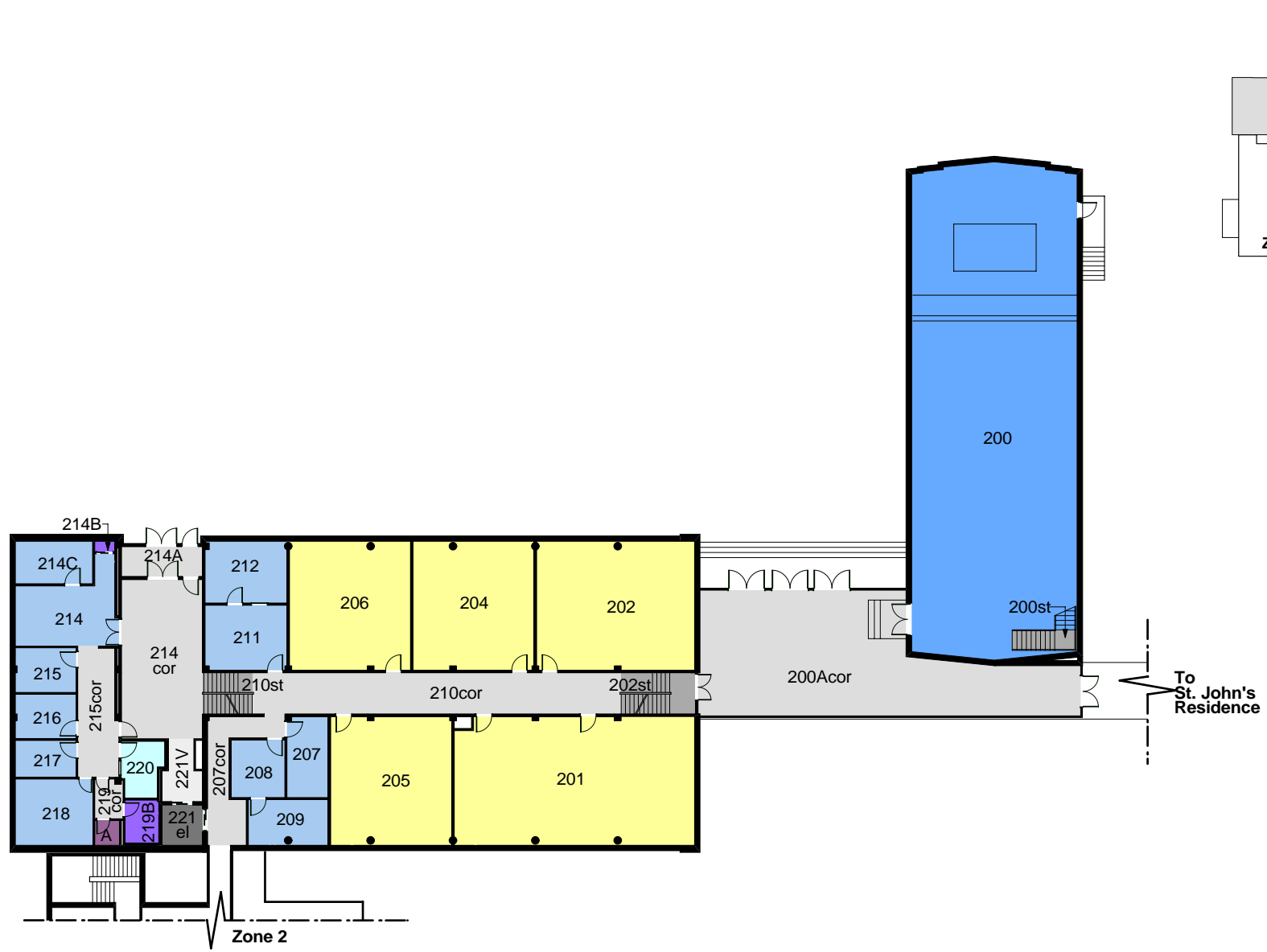


ST. JOHN'S COLLEGE - 141
200 LEVEL - ZONE 1

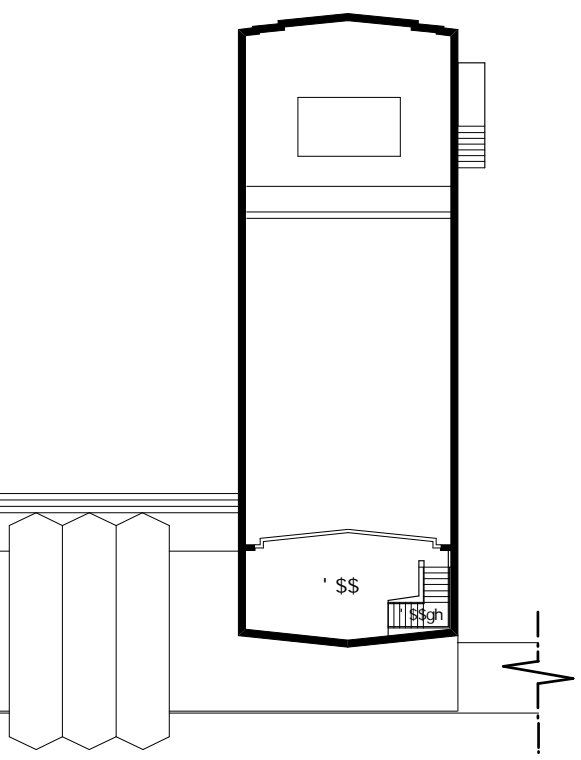
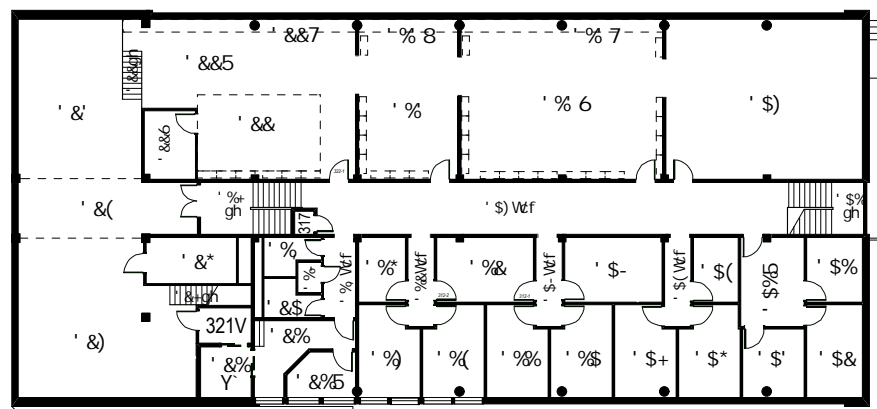
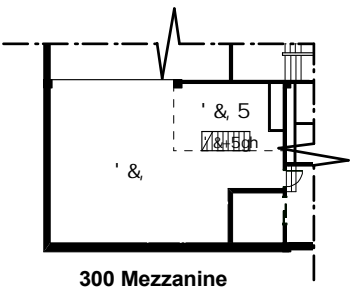
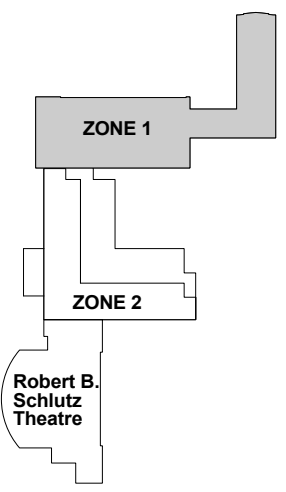
92 DYSART RD



SEPTEMBER 15, 2010

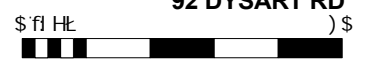
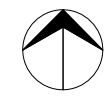


ST. JOHN'S COLLEGE - 141
200 LEVEL - ZONE 1
 92 DYSART RD
 0 (FT) 50
 SEPTEMBER 15, 2010

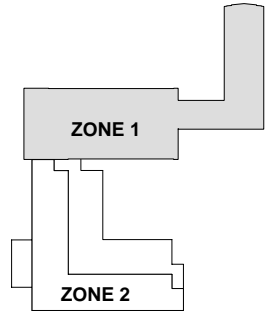
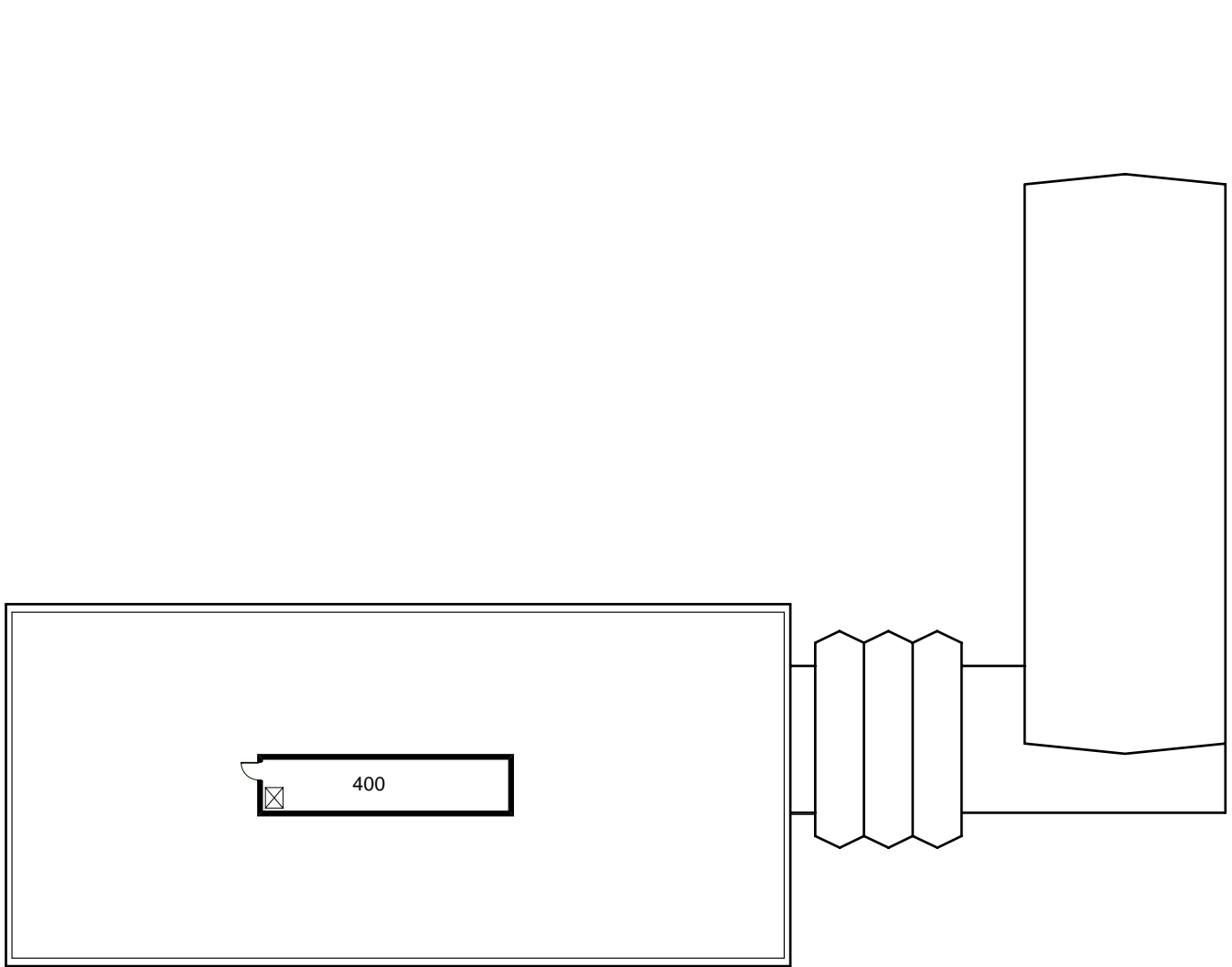


Robert B. Schlutz Theatre

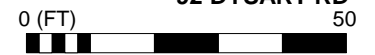
ST. JOHN'S COLLEGE - 141
300 LEVEL - ZONE 1
 92 DYSART RD



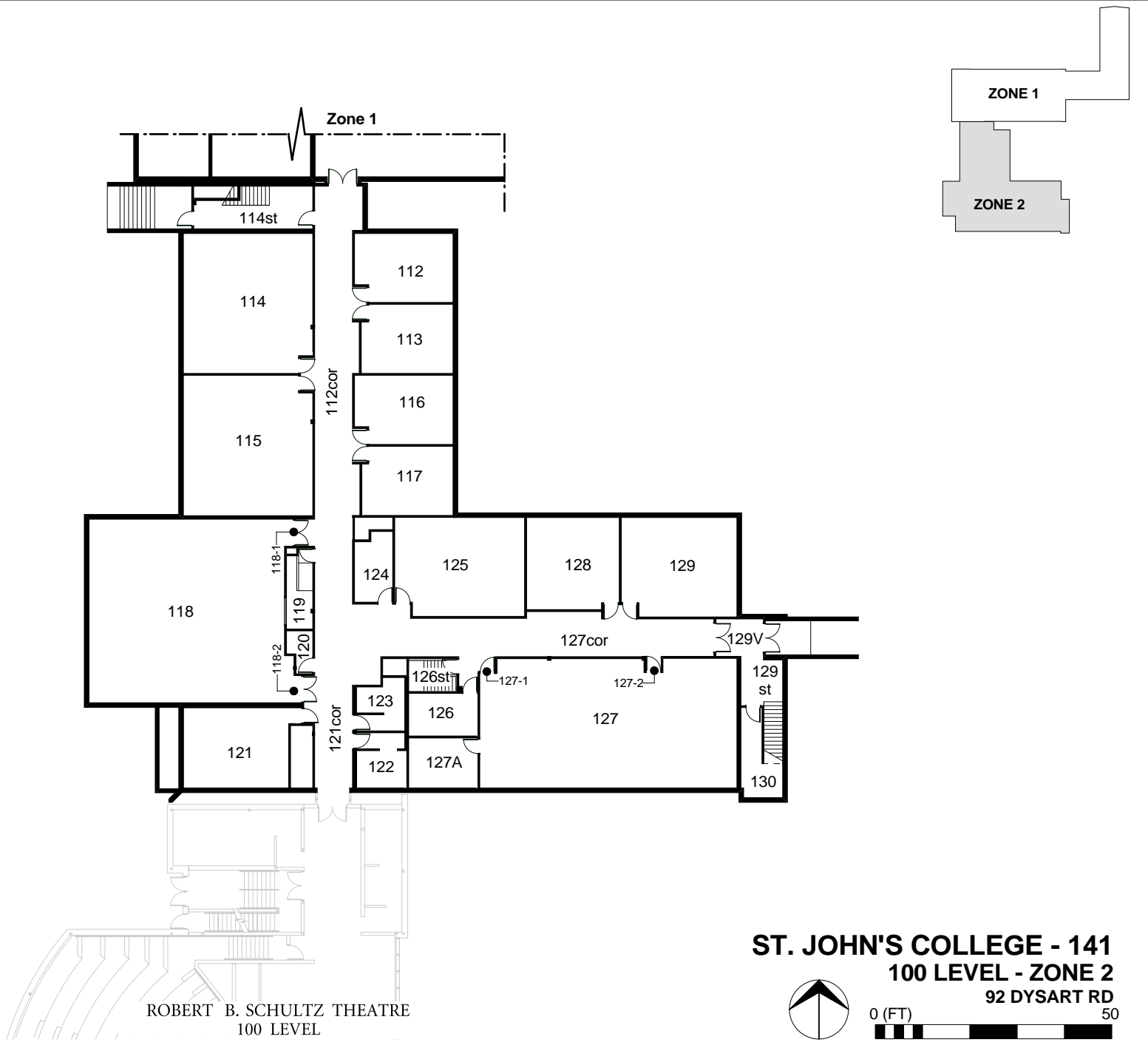
DECEMBER 31, 2013



ST. JOHN'S COLLEGE - 141
400 LEVEL - ZONE 1
92 DYSART RD



DECEMBER 18, 2006

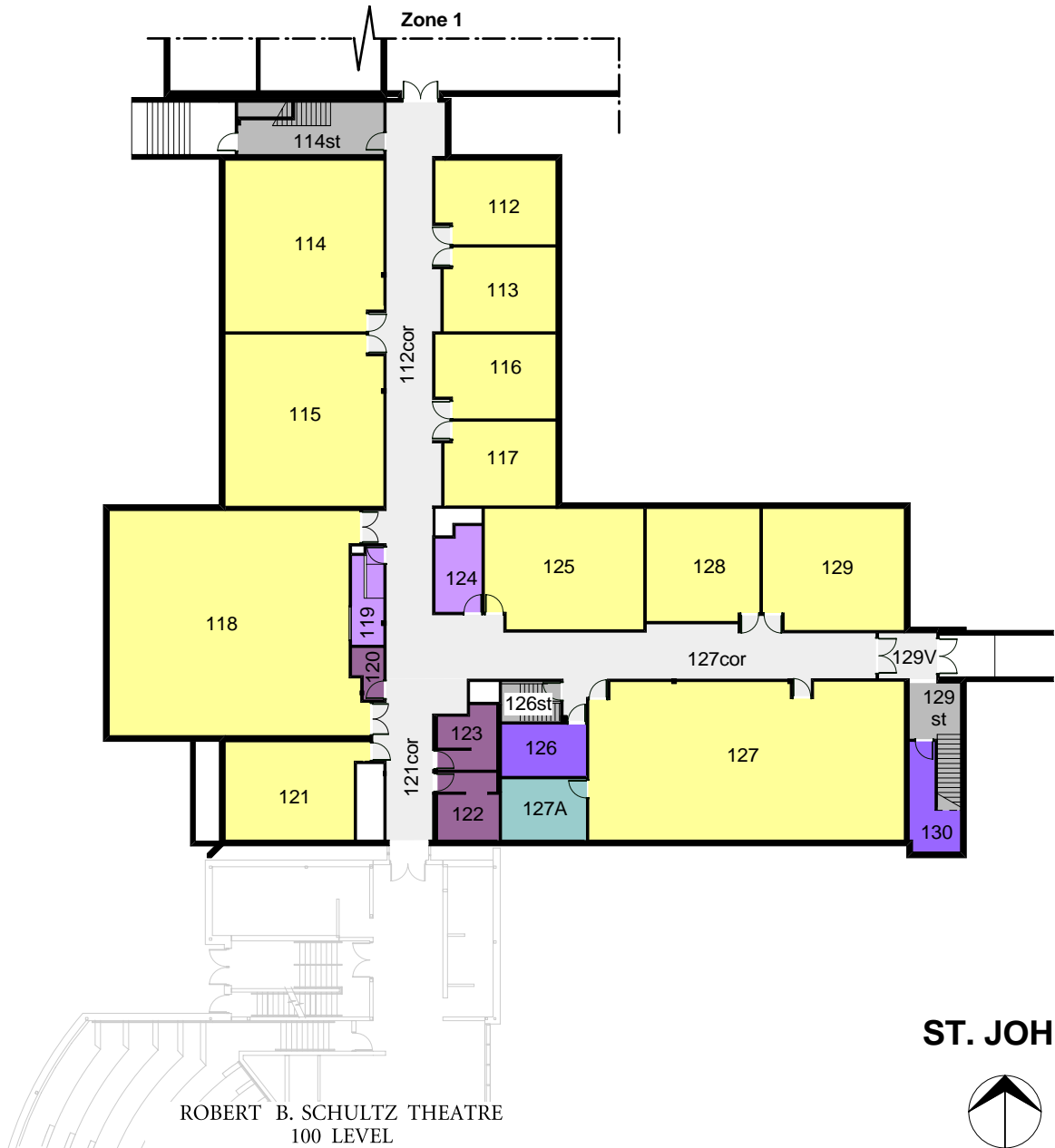
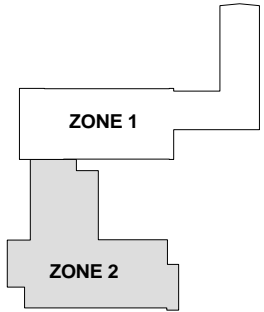


ROBERT B. SCHULTZ THEATRE
100 LEVEL

ST. JOHN'S COLLEGE - 141
100 LEVEL - ZONE 2
92 DYSART RD



NOVEMBER 15, 2008

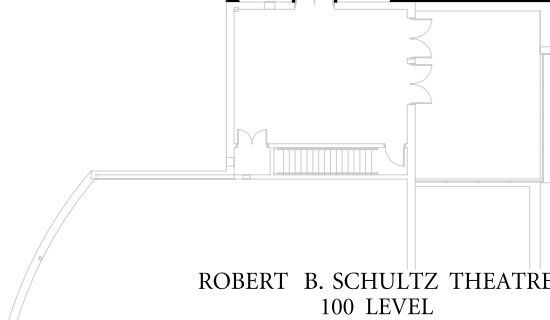
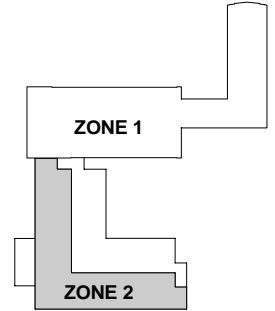
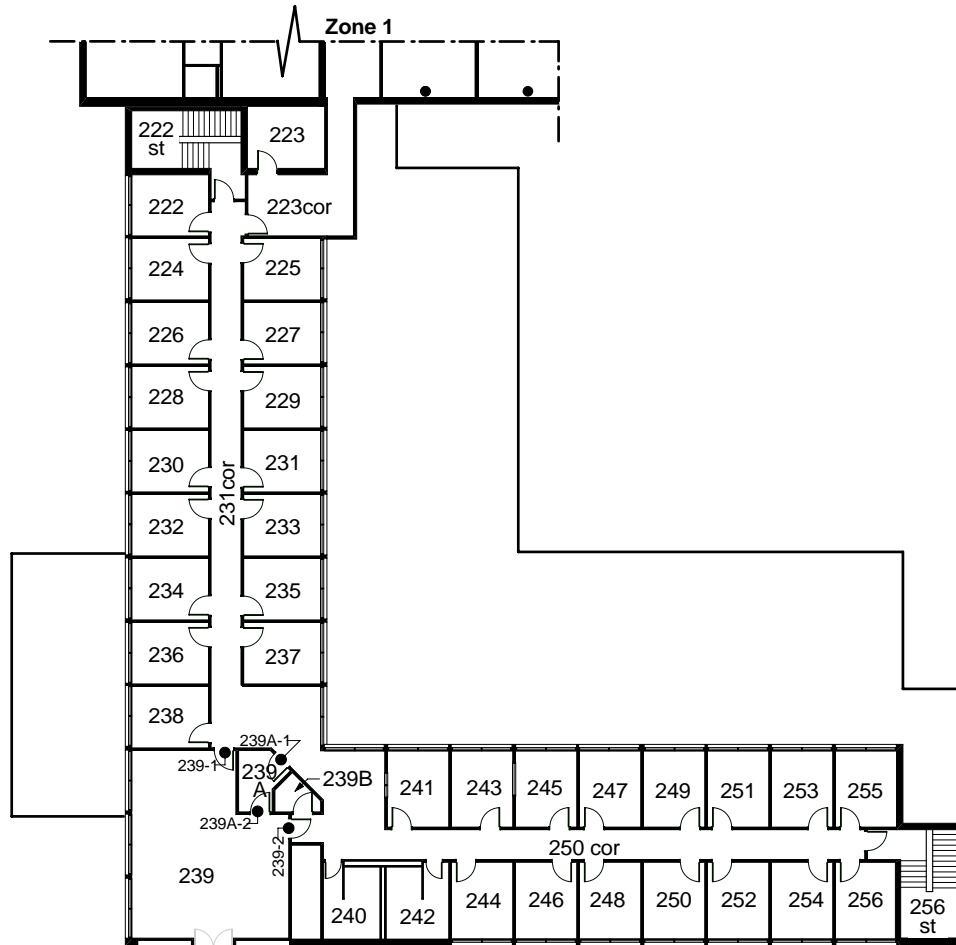


ROBERT B. SCHULTZ THEATRE
100 LEVEL

ST. JOHN'S COLLEGE - 141
100 LEVEL - ZONE 2
 92 DYSART RD

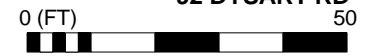


NOVEMBER 15, 2008

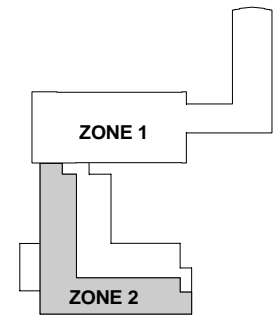


ST. JOHN'S COLLEGE - 141
200 LEVEL - ZONE 2

92 DYSART RD

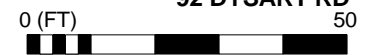


NOVEMBER 15, 2008



ST. JOHN'S COLLEGE - 141
200 LEVEL - ZONE 2

92 DYSART RD



NOVEMBER 15, 2008