

University of Manitoba Symphony

Audition Materials

Viola

Faculty of Music Students:

* Year 1 and 2 students prepare 3 excerpts

* Year 3, 4 and graduate students prepare all 4 excerpts

* In addition to the following excerpts, all players should prepare an excerpt from a solo piece of your choice, approximately 3 minutes in length.

Community Players:

Prepare 2 excerpts plus a selection from a solo piece, approximately 5 minutes in length, which will best demonstrate your ability.

| | |
|--------------------------|---------------------------|
| Strauss: Don Juan | Beginning - 6 after D |
| Shostakovich: Symphony 5 | Mvt. 1 - reh. 15 - 17 |
| Mozart: Symphony 40 | Mvt. 4 - reh C to D |
| Brahms: Symphony no. 2 | Movement 1, mm. 386 - 419 |

begin - 6 after D

Don Juan

[Symphonic Poem]

1
PHILHARMONIA ORCHESTRA
OF YALE

VIOLA

R. Strauss, Op. 20

Allegro, molto con brio

ff *pizz.* *arco* *mf* *ff* *ff* *ff* *ff* *ff* *ff* *ff* *ff* *ff*

tranquillo *p*

Viola

The image displays a page of a musical score for the piece "L'Espresso" by Franz Liszt. The score is written for piano (p) and violin (v). The key signature is D major (two sharps: F# and C#). The time signature is 3/4. The score is divided into several systems, each containing staves for both instruments. The first system is marked "molto vivo" and "C". The second system is marked "p", "cresc.", and "espr.". The third system is marked "rapidamente", "ff", "poco calando", and "trem.". The fourth system is marked "D", "tranquillo", "div.", "dim.", "ppp", and "2". The fifth system is marked "pp", "3", and "4". The sixth system is marked "E", "3", and "pp". The seventh system is marked "Solo", "espr. molto", and "pp". The score includes various musical notations such as triplets, slurs, and dynamic markings.

Schostakovich

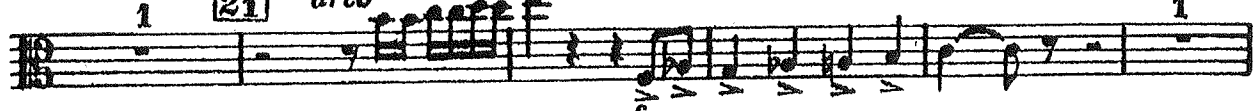
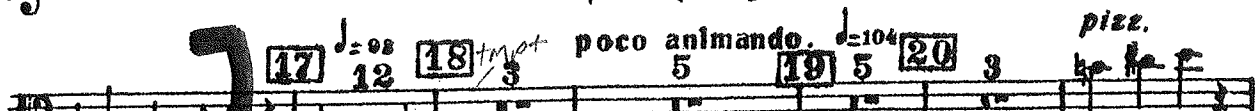
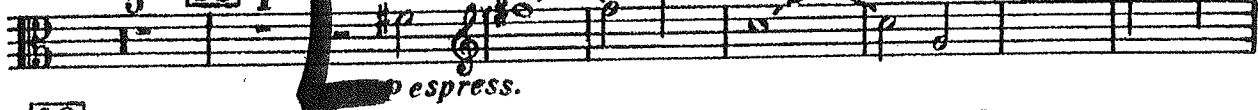
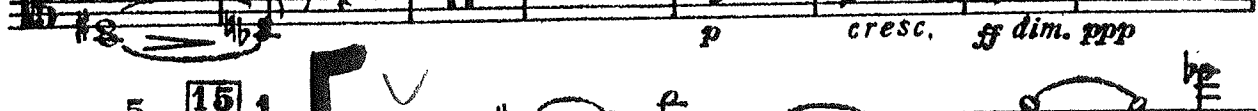
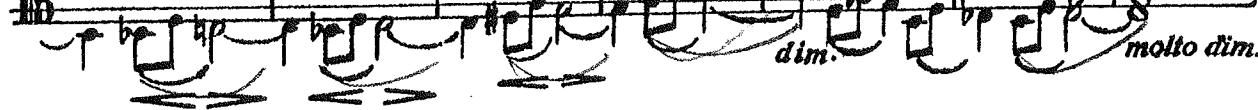
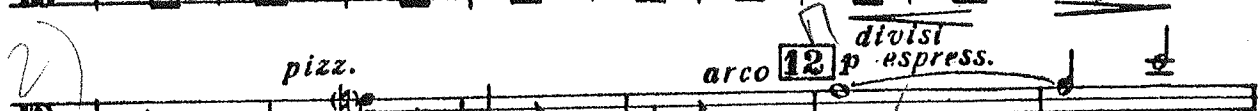
Symphony #5

Mvt. I

2

tip
♩ = 84 **9**

Viola.



2) Mozart Symphony No. 40 – 4th mvt. excerpt

(♩ = ca 132)

Allegro assai

C

f

3

2

0

2 4 3 1 - - -

3 4

D 1

Brahms # 2

Bratsche

mut. 1

4

I **V**

302 *p dolce* *espr.*

311 *mp* **2**

320 *p e dolce sempre*

334 *dim.* *pp dim.* **6** **K** Pk. Hr. cant.

351

362

372 *pizz.*

382 *div.* *cresc.* *quasi riten.* *f* *sf* *ben marc.*

389

396 *f* *marc.*

401 *ff* *poco f ben marc.*

405 **1** **2** **3** **4**

Brahms # 2

mut. 1

Bratsche

5

Handwritten notes: *E7 2* (with arrow pointing to measure 409), *p2* (circled), *L* (boxed), *M* (boxed).

409 *5* *6* *7*

413 *cresc.*

417 *ff*

423 *L* *fp* *3*

428

435 *dim.* *pp* *3* *p*

447 *M* *p* *cresc. molto* *f* *un poco stringendo* *pp* *2*

460 *cresc.*

467 *rit.* *f* *p dim. molto* *pp*

477 *in tempo, ma più tranquillo* *mp*

483 *cresc.*

489 *poco rit.* *in tempo, sempre tranquillo* *3* *f dim.* *p*