

ECOLOGY AND ETHNOECOLOGY OF ROBALOS IN PARATY BAY.

Vinicius Nora

Orientador(a): Prof.^a Dr.^a Alpina Begossi



INTRODUCTION

- Ecological aspects of snook;
- Economic and social importance;
- Fishery types;

ECOLOGICAL ASPECTS OF SNOOK



- LATERAL LINE MORE EVIDENT
- WEIGH – 25 Kg (MÁX)

**FIGUEIREDO & MENEZES (1980);
WWW.FISHBASE.ORG**

Centropomus undecimalis (BLOCH, 1792)- robalo, common snook

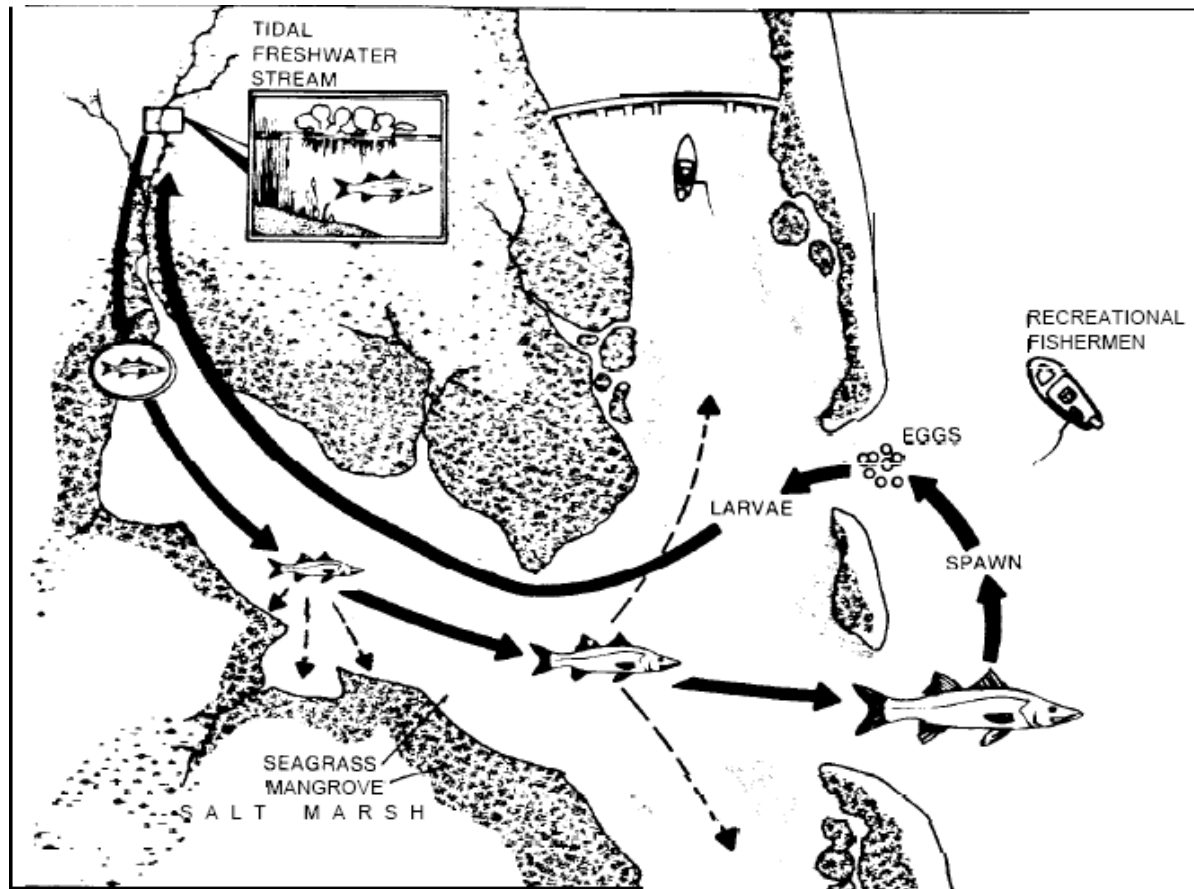
- LATERAL LINE
- WEIGH – 5 Kg (MÁX)

**-FIGUEIREDO & MENEZES (1980);
WWW.FISHBASE.ORG**



Centropomus parallelus (POEY, 1860) – robalo-peva, snook

ECOLOGICAL ASPECTS OF SNOOK



Reproductive cycle for common snook *C. undecimalis* (Seamam 1983)

ECONOMIC AND SOCIAL IMPORTANCE



- Possess in their meat their greatest commercial appeal, what shows their social relevance, as they are expensive fish and basically provided from **artisanal fishing**. (CERQUEIRA, 2002);

- Most marketed fish in Paraty (BEGOSSI, *et. al.*, 2009);



FISHERY TYPES

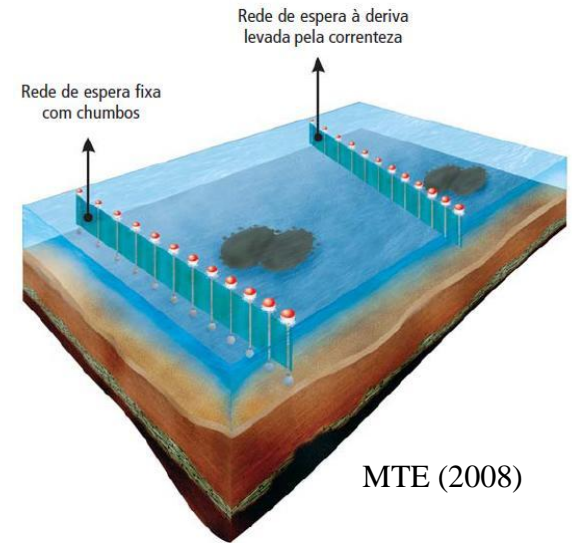


Photo: Vinicius Nora

Harpoon



Hook and line



MTE (2008)

Gillnet

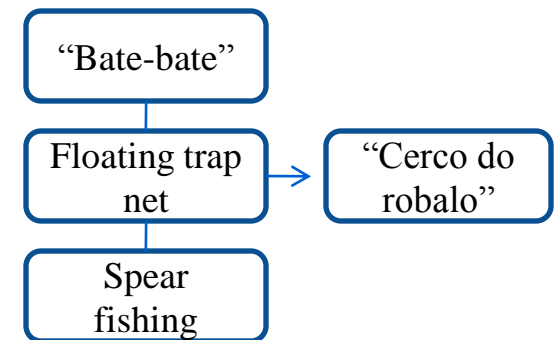


Foto: Ruy Carlos (Olhares.com)

“Tarrafa”

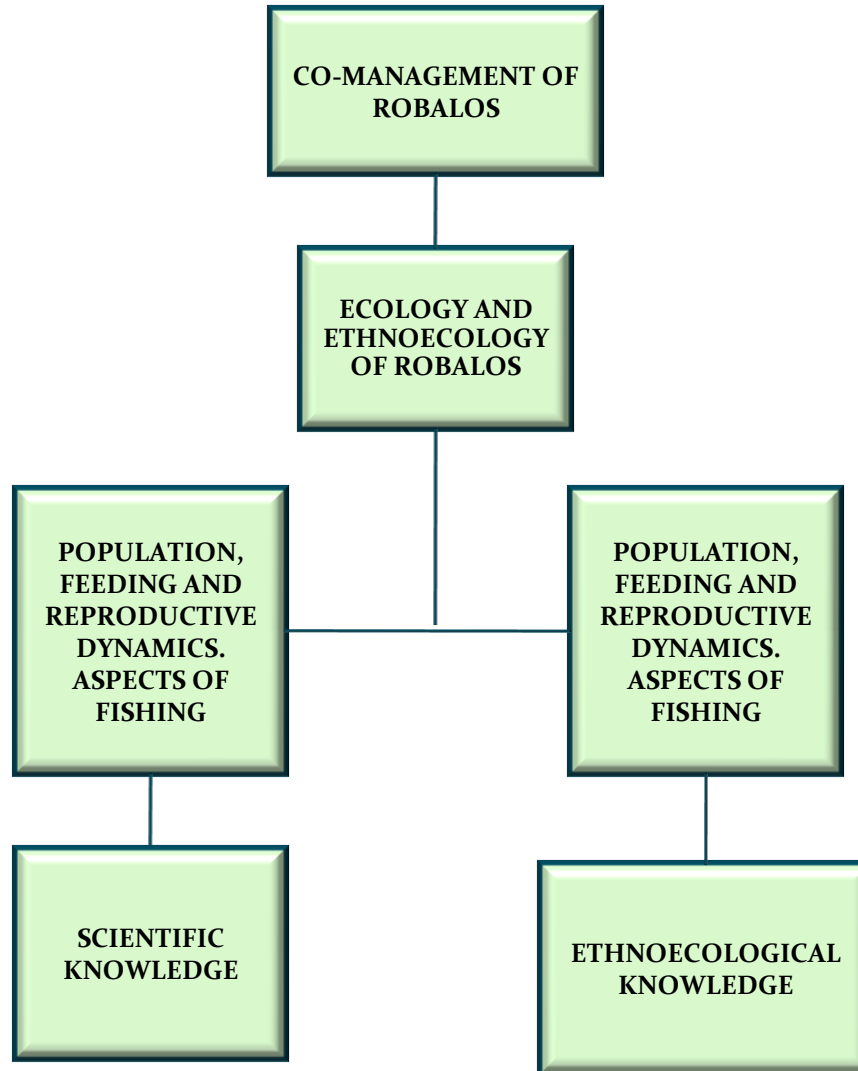


Spear Fishing



“Cercos do robalo”

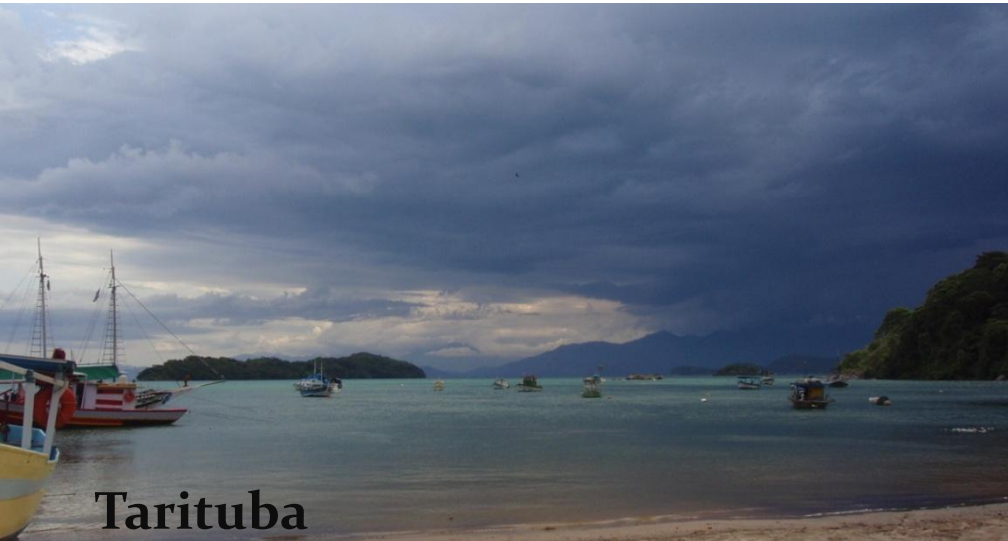
OBJECTIVE



METHODS

- **Fishing Landings** (interview, biometrics) - [Abiotic Data Temperature, humidity, wind and rain];
- **Analysis of Stomach Contents and Gonads** (color, volume and maturity);
- **Ethnoecological knowledge** (interview);
- **Participant Observation**;

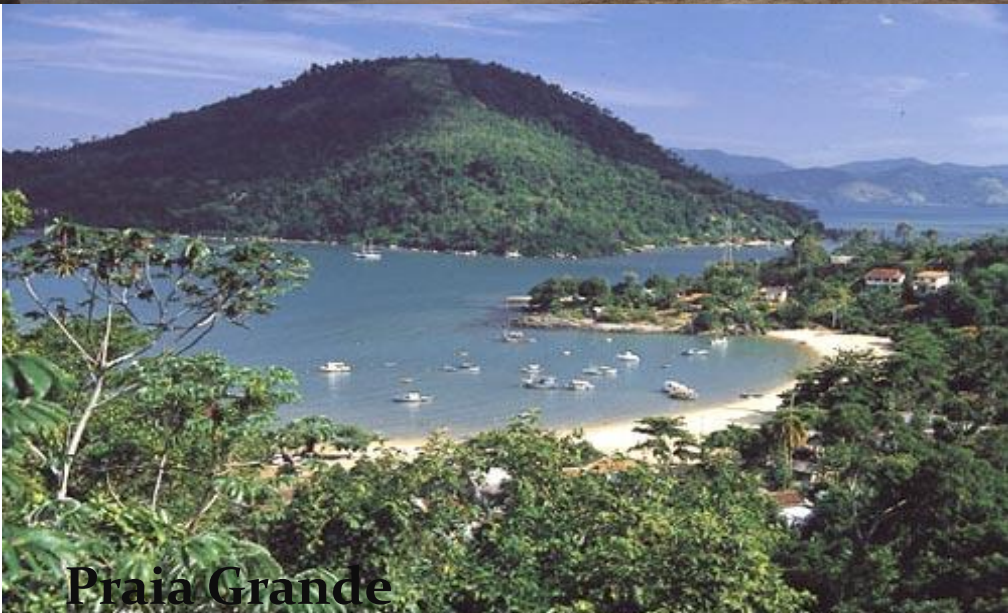
STUDY AREAS



Tarituba



Perequê



Praia Grande

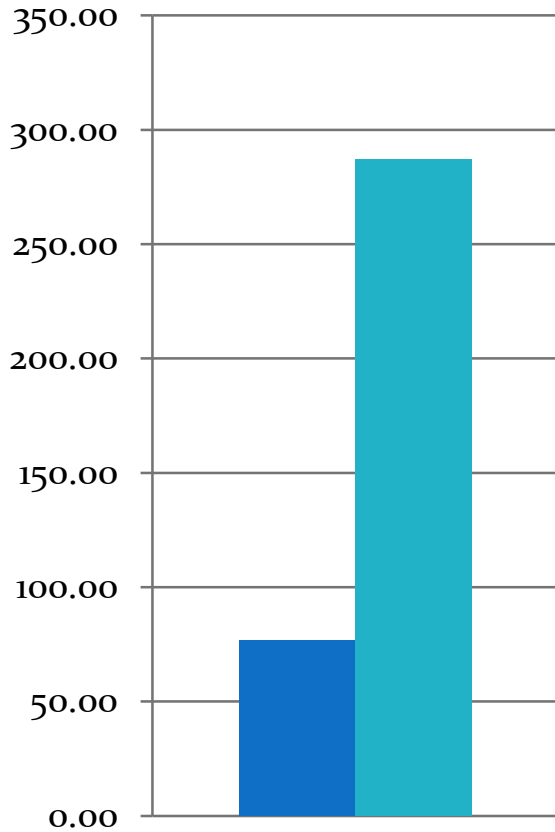


Ilha das Cobras

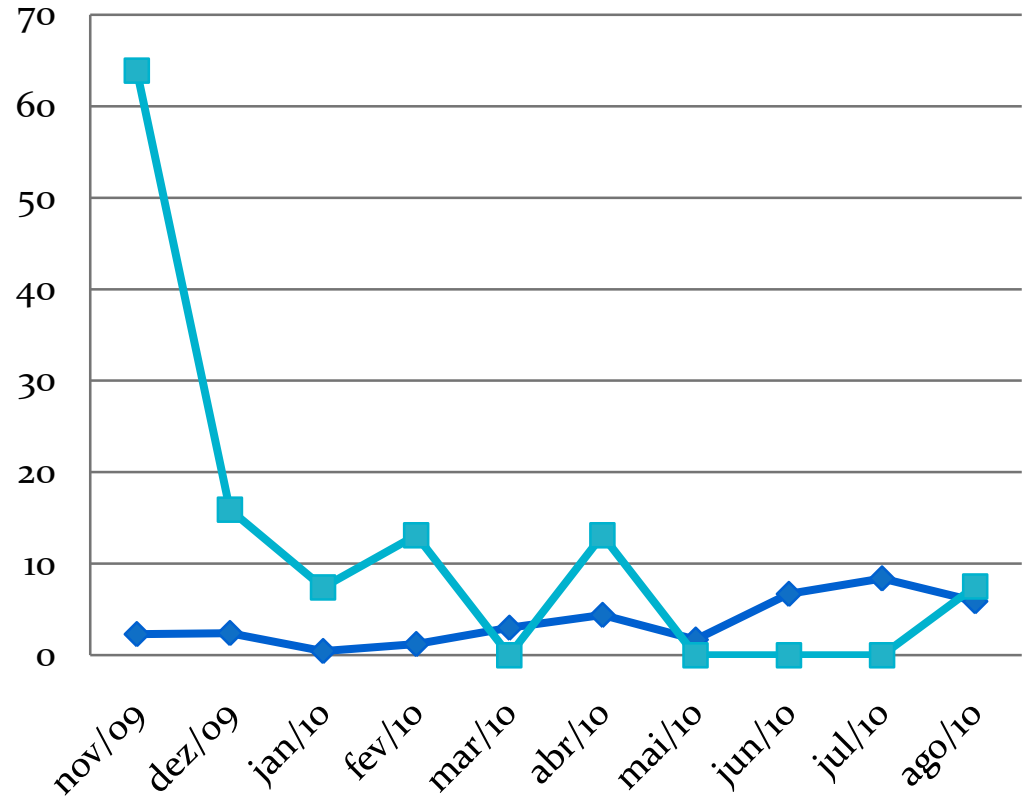
PARTIAL RESULTS

- Total catch;
- Catch per month of Robalos;
- Weigh classes;
- Stomach contents;
- Gonads;

Total Catch (Kg)



Catch per month of Robalos (Kg)



■ Robalo Peba

■ Robalo Flexa

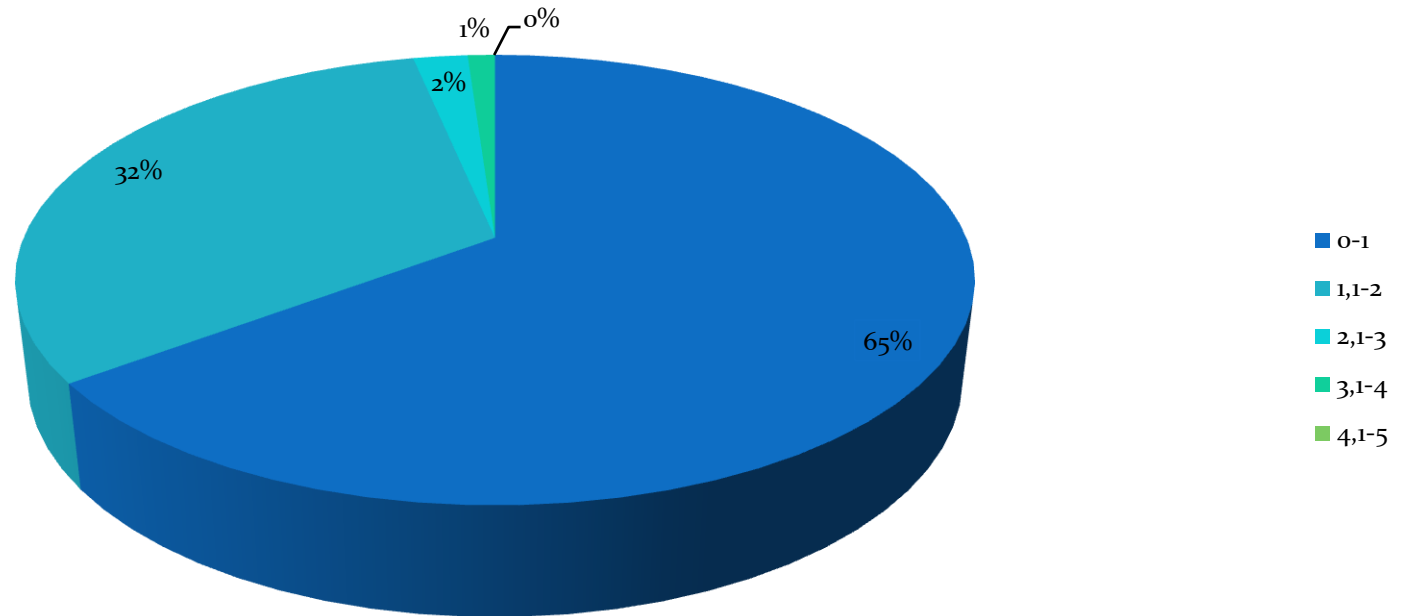
In total catch there is a value almost four times higher for *Centropomus undecimalis* in relation to *C. paralellus*.

In the monthly variation a sharp decrease in the production of Snook can be observed in the months of December and January.

This can be justified by the heavy rains in the end of 2009

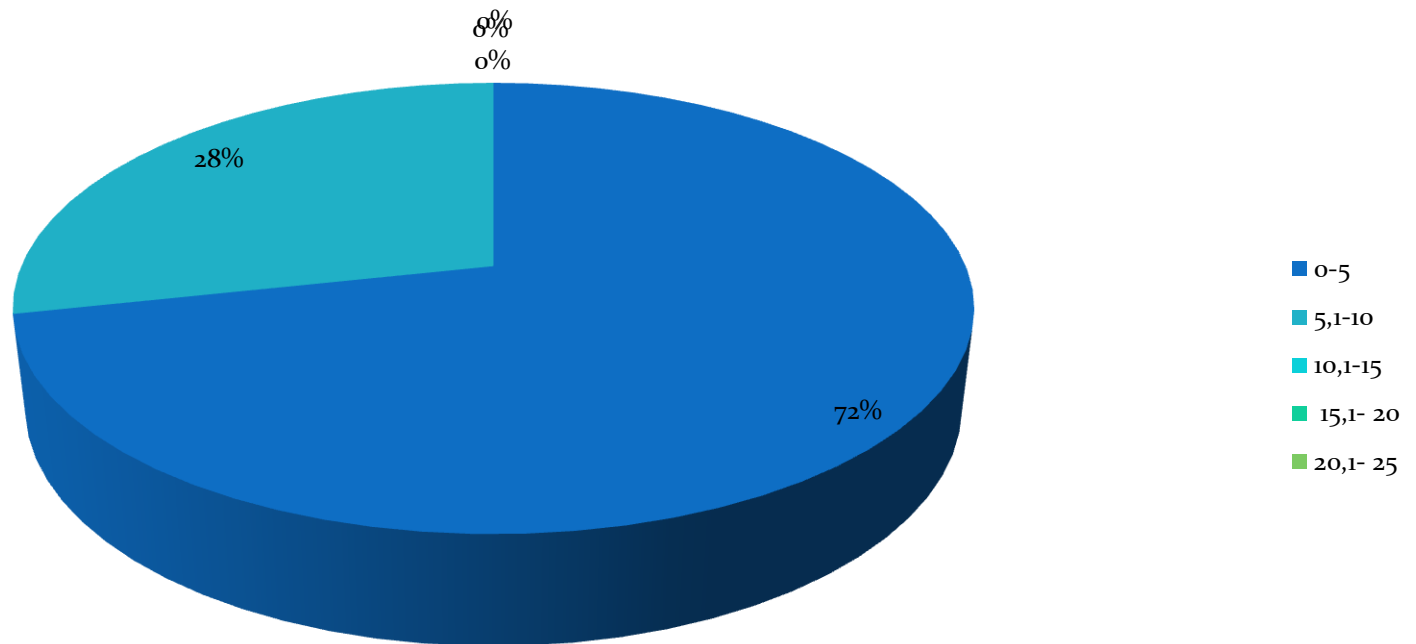
The capture of *C. paralellus* was constant throughout the year.

Weigh classes- Robalo Peba



65% of the snook found in the landings weighed up to 1 kg and 32% are of individuals that weighed from 1.1 to 2 kg. Other classes represented 3%.

Weigh classes - Robalo Flexa

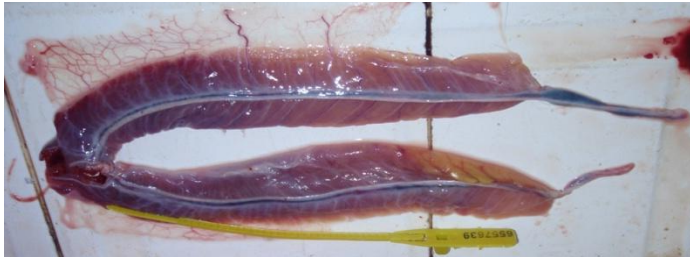


72% of *C. undecimalis* weighed up to 5 kg and 28% from 5.1 to 10 kg

STOMACH CONTENTS



GONADS - Centropomus undecimalis



?



GONADS - *Centropomus parallelus*



?



?



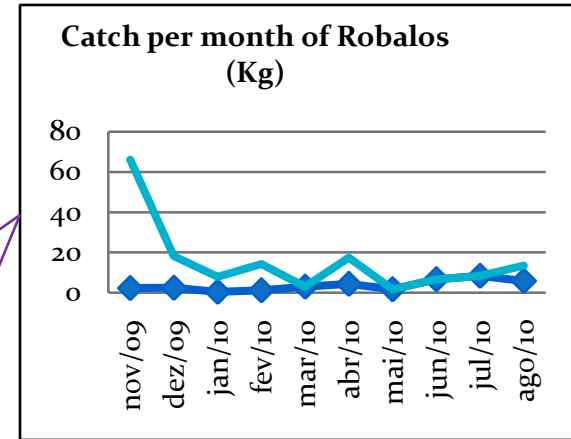
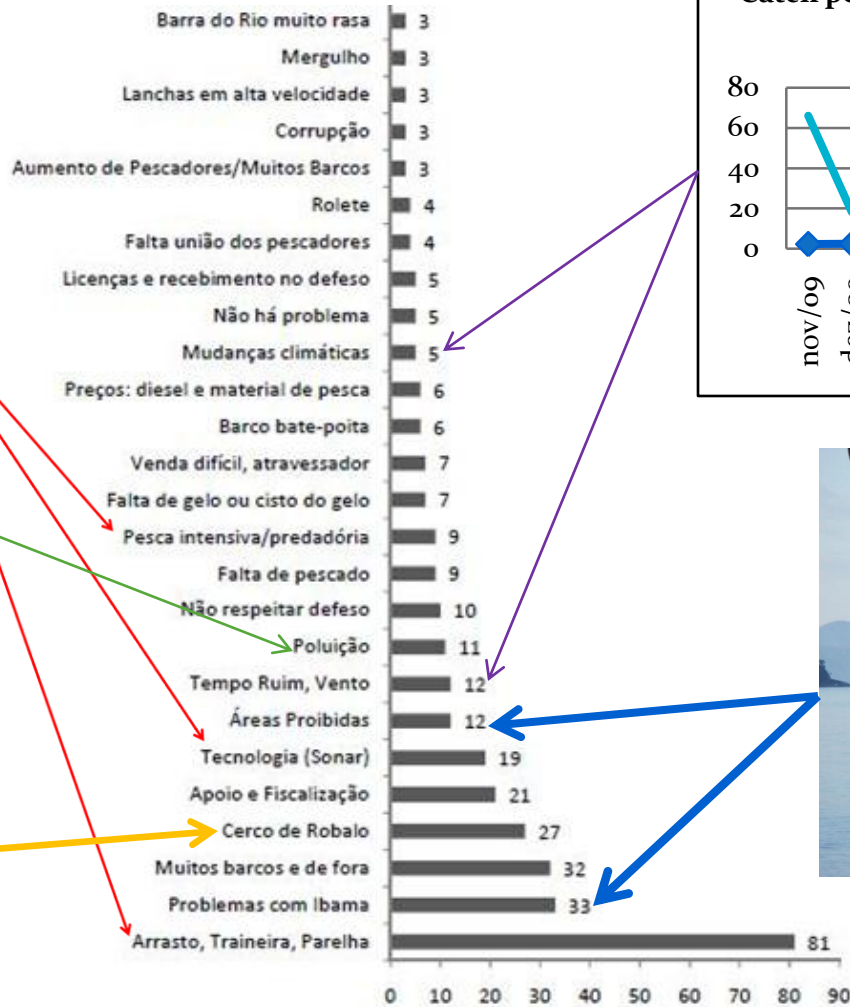
?



?



MAJOR PROBLEMS



The main problems presented by artisanal fishermen in Paraty (BEGOSSI, *et. al.*, 2009);

REFERENCES

- BEGOSSI, A. **Local Knowledge and Training Towards Management**. Springer Science+Business Media B.V. 2008.
- BEGOSSI A.; SILVANO, R. AM.; **Ecology and Ethnoecology of Dusky Grouper [garoupa, *Epinephelus marginatus* (Lowe, 1834)] Along The Coast of Brazil**. Journal of Ethnobiology and Ethnomedicine, 2008.
- BEGOSSI, A. **Métodos e Análises em Ecologia de Pescadores**. Dimensões Humanas da Biodiversidade. Petrópolis - 2006
- CERQUEIRA, V. R. C. **Cultivo do Robalo, Aspectos da Reprodução. Larvicultura e Engorda**. Universidade Federal de Santa Catarina (UFSC). Laboratório de Piscicultura Marinha (LAPMAR), 2002.
- RODRIGUES, P. P. R. **Aspectos Reprodutivos do Robalo peba, *Centropomus parallelus*, na Foz do Rio Doce, Linhares/ES**. Universidade Federal do Espírito Santo Centro de Ciências Humanas e Naturais Departamento de Ecologia e Recursos Naturais Curso de Graduação em Oceanografia, 2005.
- LOPES, P. F. M.; **Modelos ecológicos e processos de decisão entre pescadores artesanais do Guarujá, SP**. Universidade estadual de Campinas, SP, 2008.
- BARROSO, M. V. INCAPER; SOUZA, G. A. P.; SALES, E. F.; DURÃO, J. N.; (INCAPER); THOMÉ, J. C. A.; LEITE, J.; NILAMON, O.; MOREIRA, L. M. P. (PROJETO TAMAR/IBAMA); SANGALIA, C. (Projeto Ecocidadania da Petrobrás). INCAPER. **Estratégias de Conservação das Populações de Robalos *Centropomus spp.* na Foz do Rio Doce, Linhares/ES, Brasil**. Revista Brasileira de Agroecologia, vol. 2 N.º 2, 2007.
- FIGUEIREDO, J. L.; e MENEZES, N. A. **Manual de peixes marinhos do sudeste do Brasil. III. Teleostei (2)**. Museu de Zoologia. Universidade de São Paulo, São Paulo, 1980.
- MENDONÇA, M. C. F. B.; **Autoecologia do Camorim, (BLOCH, 1972), (Perciformes: Centropomidade) em ambiente hipersalino em Galinhos, RN, Brasil**. Universidade Federal de São Carlos, SP, 2004.
- SEAMAM, W., Jr., and M. COLLINS. **Species profiles: life histories and environmental requirements of coastal fishes and invertebrates (South Florida) -- snook**. U.S. Fish Wildl. U.S. Army Corps of Engineers. Florida, USA, 1983.
- SEIXAS, C.S. 2005. Abordagens e técnicas de pesquisa participativa em gestão de recursos naturais. Em VIEIRA, P.H.F., BERKES, F. E C.S. SEIXAS, *Gestão Integrada e Participativa de Recursos Naturais*, APED Editora, Florianópolis. (Cap. 3)
- AOKI, P. C. M.; XAVIER P. Z.; FERRI, L. S.; CARVALHO, M. A. G.; ROSSONI, M. C.. **Aspectos Gerais da Família Centropomidae e uma Proposta de Cultivo do Robalo-Peba (*Centropomus parallelus* POEY, 1860) no Estado do Espírito Santo**. Revista do Centro Universitário de Vila Velha (ES), v. 3, n. 1, Janeiro/Julho de 2002.

OBRIGADO

