

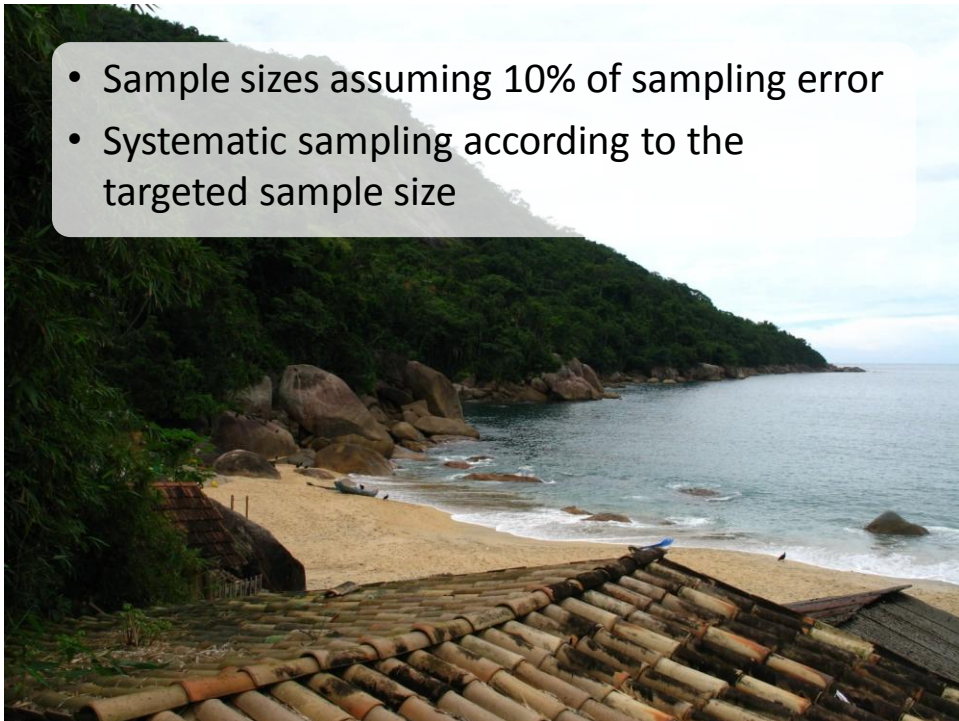
## Livelihood surveys in 7 fisher communities in Paraty: preliminary results

*by Natalia Hanazaki; presented by Mariana Giraldi  
Dept. Ecologia e Zoologia, Universidade Federal de Santa Catarina  
(natalia@ccb.ufsc.br)*

- 
- Questionnaire planning and design (Nov/2009-May/2010)
    - Brazilian and Canadian teams, skype meetings, suggestions through email
  - Communities selection and sample design (Jan/2010)
    - Natalia Hanazaki, Nivaldo Peroni, Cristiana Seixas, Luciana Araujo, Mariana Giraldi, Laura Cavechia
  - Pre-testing (Jun/2010)
    - Luciana Araujo, Mariana Giraldi, Laura Cavechia, Carlos Idrobo
  - Data collection (June 28 – July 8/2010)
    - Laura Cavechia, Mariana Giraldi, Luciana Araujo, Ivan Martins, Fernanda Bueloni, Rodrigo de Freitas, Luziana Silva, Carlos Idrobo, Lydia Carpenter, Nivaldo Peroni, Natalia Hanazaki



- Sample sizes assuming 10% of sampling error
- Systematic sampling according to the targeted sample size



## Household livelihood questionnaire

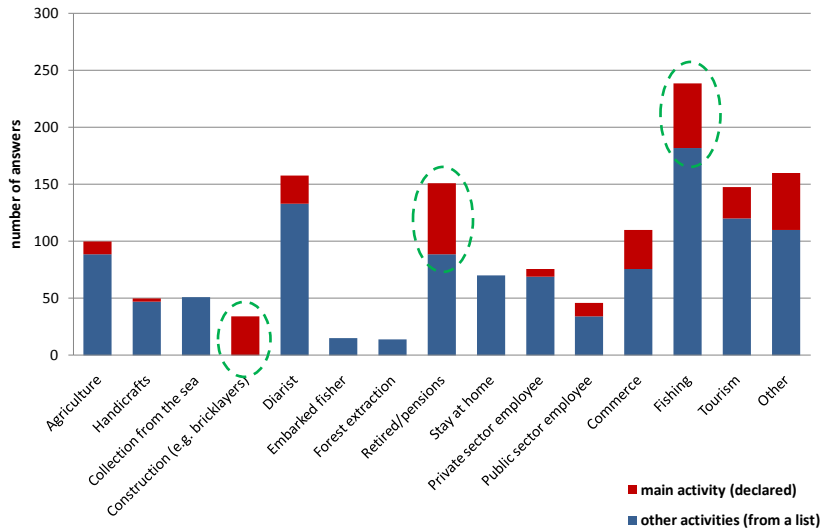
- Each interview was preceded by an explanation about the research goals to obtain the previous informed consent (informal)
- Formal consent discussed with leaders
- Interview structure
  - 1. HH INFORMATION
  - 2. FISHING DETAILMENT (answered only by HHs engaged in fishing activities)
  - 3. FOOD SECURITY
  - 4. FUTURE PROSPECTS, LIFE QUALITY AND MICRECONOMY

Community	previously estimated HH number	Targeted sample size	HHs sampled	Average duration	Number of men	Number of women	Total sampled population
Tarituba	134	57	34**	22 min	56	68	124
Barra Grande	318	76	76	23 min	150	159	309
Praia Grande	80	44	44	23 min	100	93	193
Ilha do Araujo	118	54	54	24 min	104	111	215
Trindade	228	70	70	21 min	124	104	228
Praia do Sono	112	53	40*	25 min	109	69	178
Ponta Negra	48	32	32	22 min	72	68	140
<b>Total</b>	<b>1038</b>	<b>386</b>	<del>350</del>		<b>715</b>	<b>672</b>	<del>1387</del>

\*11 refusals, 17 closed houses, 13 empty houses

\*\*more than 20 closed or empty houses. The previously total HH number was clearly overestimated; we counted less than 70 HHs (total)

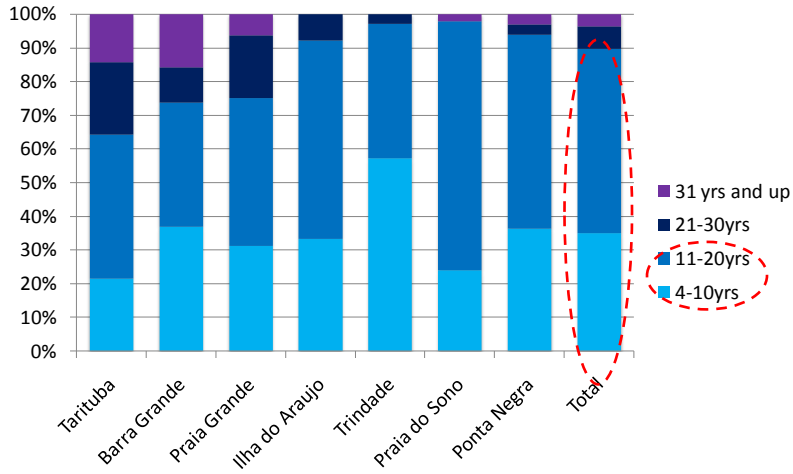
## Economic activities (350 HHs)



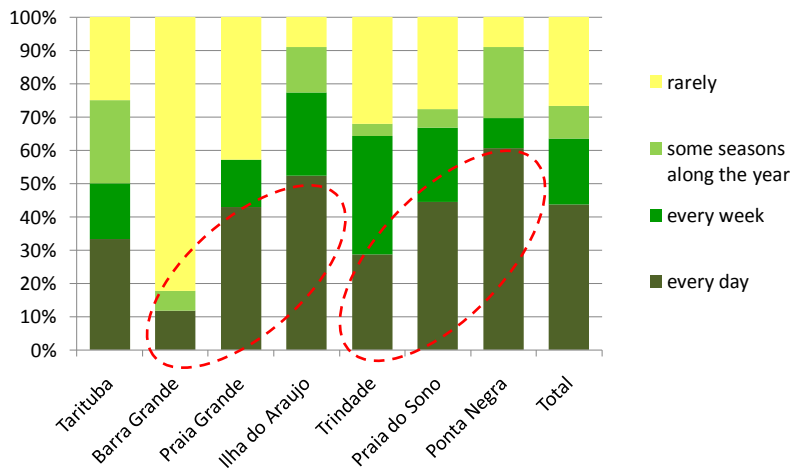
## Fishing (175 HHs, n=200)

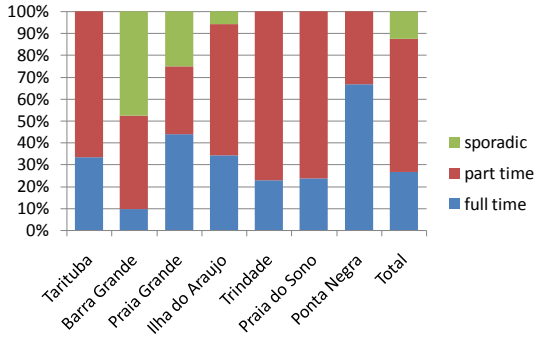
	HHs with fishers	Sex	Fisher's HHs with boat	Fisher's HHs with motor
Tarituba				
Barra Grande				
Praia Grande				
Ilha do Araújo				
Trindade				
Praia do Sono				
Ponta Negra				
<b>Total</b>				

## Age when started fishing activities (n=214)

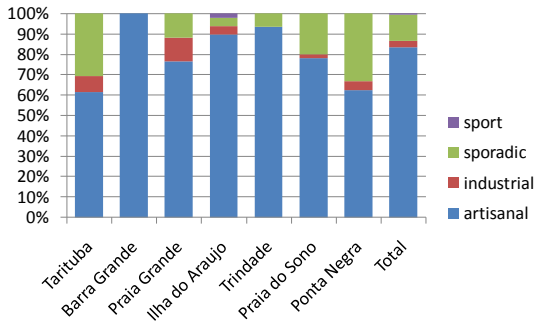


## When do you fish? (n=209)

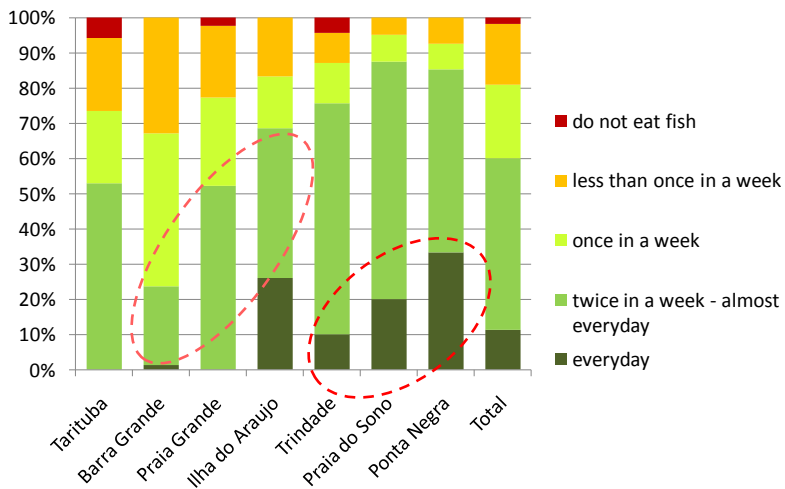




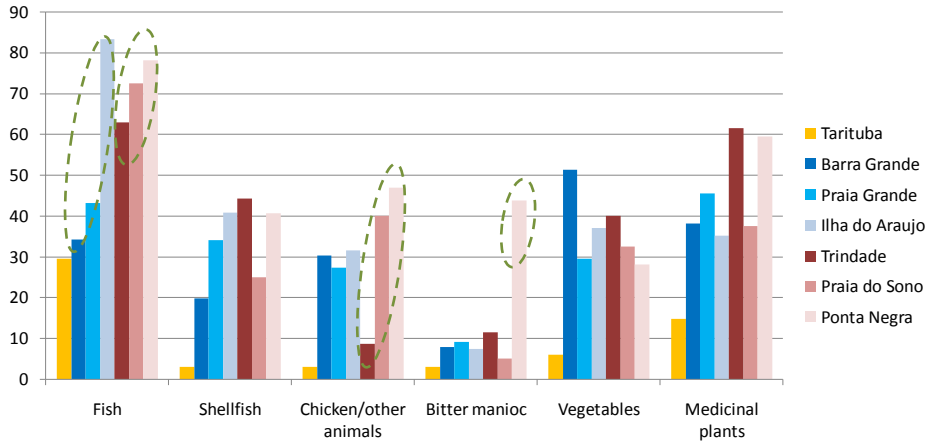
Type of fishing activity: post-classified (n=175, above) and self perception (n=215, below)



### Fish consumption (n=345)



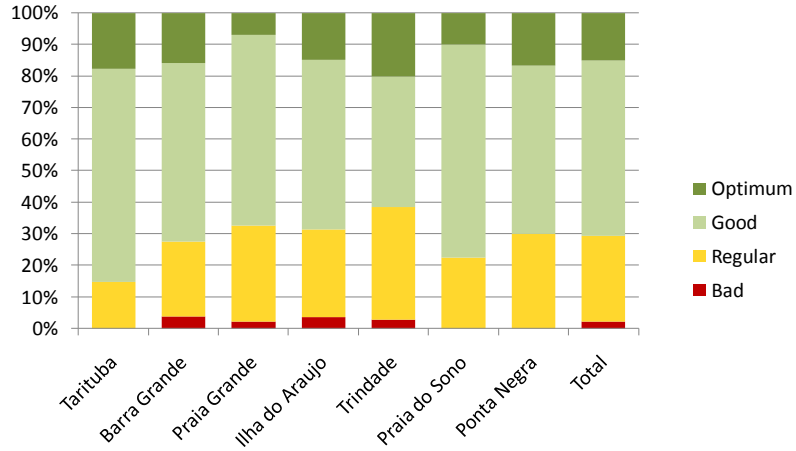
## Food production (n=350)



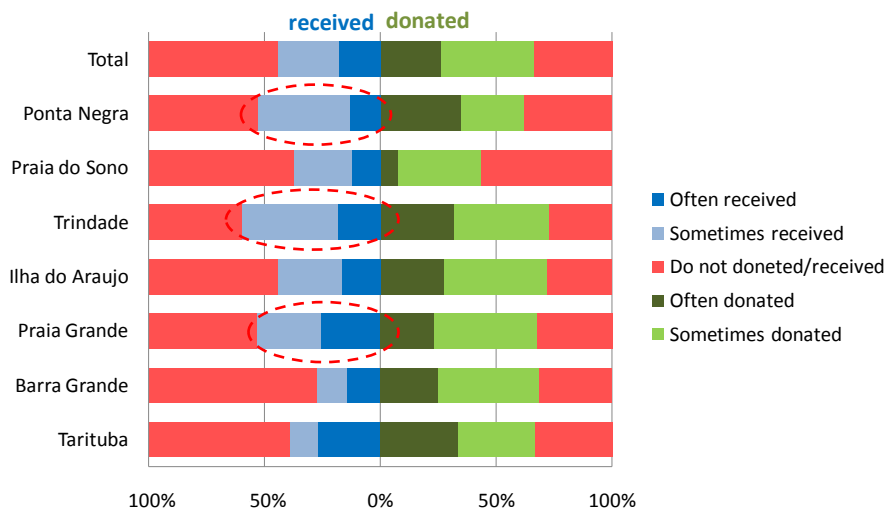
## During the last 12 months did your household suffer any food shortage? (n=345)



## Quality of food consumption (n=347)

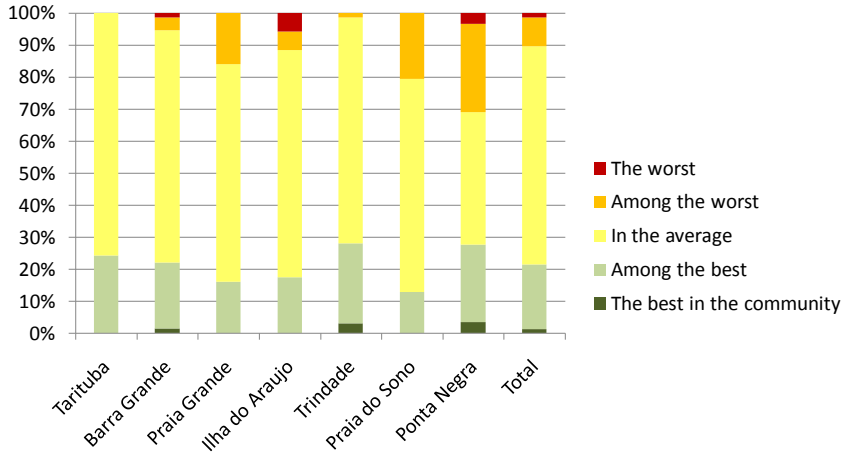


## Food exchanges (n=345)

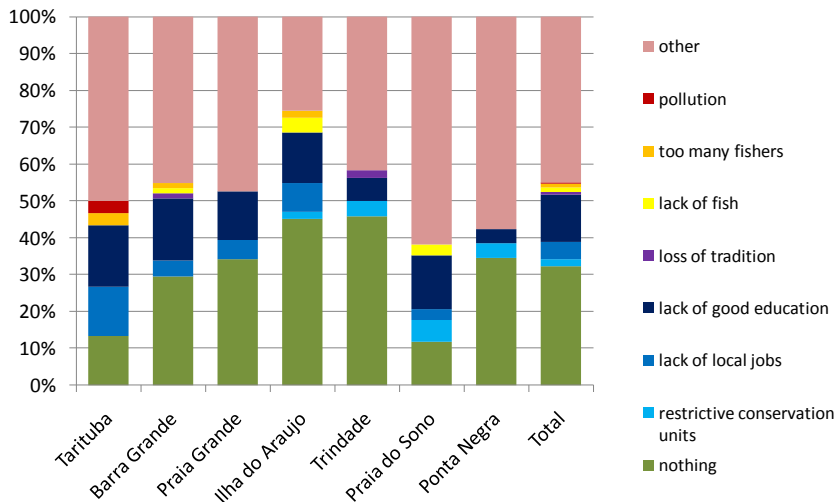




## Quality of life, when compared to the other HHs in the community (n=338)



## Future (What would hinder your children to achieve your desired future?) (n=262)





Thank you!