

THE UNIVERSITY OF MANITOBA
College of Rehabilitation Sciences

COLLEGE COUNCIL MEETING

Monday, January 16, 2023 at 12:00 p.m – Zoom Session

PRESENT:

Chair

R. Urbanowski

CoRS Faculty

T. Allison

R. Barclay

C. Brown

C. Campbell

K. Codispodi

S. Conci

J. Cooper

L. Diamond-Burchuk

L. Engel

M. Garrett

M. Hart

L. Harvey

L. Johnson

L. Leclair

D. Mackey

N. Macleod Schroeder

B. MacNeil

P. Mai

J. Neufeld

J. Parsons

J. Ripat

R. Schorr

P. Thille

S. Webber

Class Presidents

Absent

MSc Student Rep

Absent

Support Staff

M. Abrenica

CoRS Librarian

H. Loewen

Clinical Placement Representatives

B. Semenko

T. Fisher

N. Hill

Ongomiizwin

D. Beach-Ducharme

COTM

K. Baessler

CPM

Absent

Interlake Eastern Regional Health Authority

K. Wood

MARRT

D. Handziuk

MPA

S. Conci

MSOT

Absent

Northern Regional Health Authority

Absent

Prairie Mountain Health Authority

J. Logan

Shared Health

Absent

Southern Health Sante Sud

N. Klaasen

WRHA

Absent

Special Guests

n/a

Quorum met

1. OT and PT Program Expansion PowerPoint-attached (R. Urbanowski)

2. Open Discussion

- The College Council is not being asked to approve the program, but to approve/deny the proposal elements as presented
- Indirect costs for the expansion, such as library costs and other central university costs, will be factored into the budget
- The government is aware that RFHS will be submitting a proposal, they are unaware of what budget costs will be requested. If the budget is approved, these will be an ongoing funds included in the yearly budget letter each January/February
- The approval process likely is as follows- President, SPPC (likely), Senate, Board of Governors for consultation and then the government
- Timeline for proposal/budget approval- We will likely know by the end of the month if the government is interested in the proposal, but it may take some additional weeks to approve/negotiate the actual numbers
- The discussions regarding space did not include RT as this has already been reimagined in the RT proposal submitted last year.
- There has been an allocation for student supports by RFHS and Central, but not specifically by the college. It is noted that this is an area that is lacking within the RFHS faculty
- Should the proposal be approved, each program's College regulatory body will be consulted in discussions due to the impact on clinical supervision
- The MOT and MPT departments both feel that this is an opportunity that must be taken advantage of. There are concerns regarding the quick turnaround time.
- This expansion will have an impact on the TRC Calls to Action. The PT and OT programs will have the opportunity to recruit faculty and they can make the determination as to if they want to recruit Indigenous Scholars

MOTION by M. Garrett- The College Council approves the OT and PT program expansion elements as presented. Seconded by L. Leclair

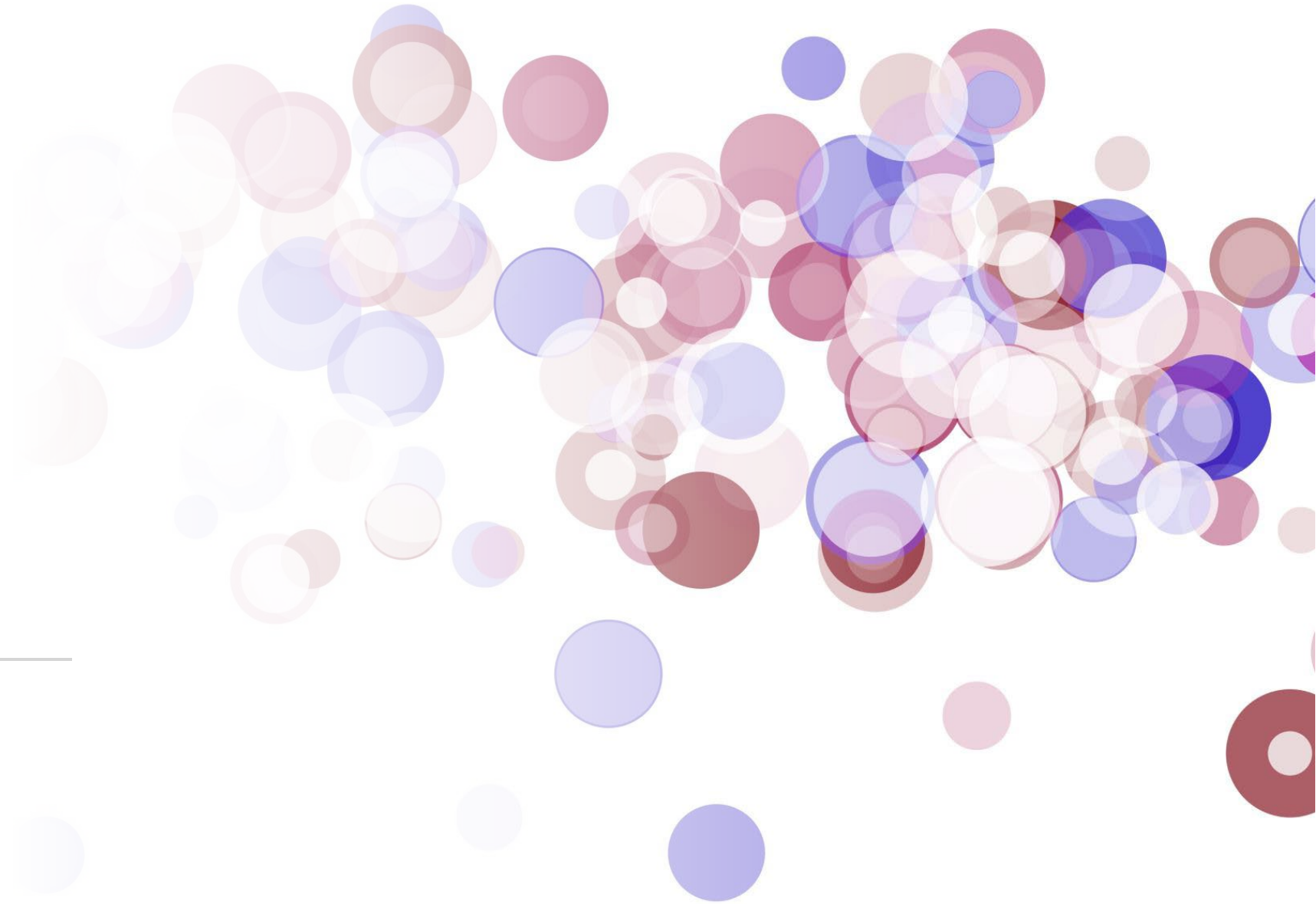
Council Votes- 31 approve, 5 abstain, 0 against.

Motion **CARRIED**



OT & PT program expansion

PROPOSAL



Need

the renewal rate

the unmet geographical distribution need

the primary health care team model

the development of regional hubs and

the need to work at full scope of practice

Human resources

Occupational Therapy

- Human Resources – FTE
 - 3.0 Full-Time faculty
 - 1.0 Instructor fieldwork/outreach
 - 0.5 Sessionals
 - 0.5 Office Assistant 5 fieldwork support
 - 0.5 Lab Steward 2 - Class Tech
 - 1.0 Office Assistant 5 for program support & ADR
 - 0.25 AA1 Admissions support
 - Grader/marker (\$5K)

Physical Therapy

- Human Resources – FTE
 - 3.0 Full-Time faculty
 - 1.0 Instructor clinical education/outreach
 - 0.5 Sessionals
 - 0.5 Office Assistant
 - 0.5 Clinical education support
 - 0.5 Lab Steward 2 - Class Tech
 - 1.0 Office Assistant 5 for program support & ADA
 - 0.25 AA1 Admissions support
 - Grader/marker (\$5K)

Capital equipment

- Scooter
- hospital beds X 2
- wheelchairs X 3
- Splinting baths X 2
- Fieldwork Database
- goniometers
- sliders
- hoyer lift/slings
- Lockers X 20
- Single hi-lo plinths x5
- Ultrasound & cart
- TENS x2
- Muscle stim x2
- Interferential therapy & cart
- Traction bed
- Hotpack covers (cervical & lumbar)
- Hydrocollator (8 pack)
- Crutches x5
- Walkers x5
- Canes x 10 (quad & single)
- Transfer belts x10
- General exercise equipment
- Treadmill
- Clinical Education Database
- Lockers X 20

Additional items

- Office furniture & equipment
- Travel & accommodations
- Start-up funds; PDA
- Teaching supplies
- Printing/duplicating
- General materials & supplies
- Accreditation costs/memberships
- Central overhead

Space

There are existing space deficits at the Bannatyne campus, and our classes are occurring in spaces in the existing building and beyond, including the library and meeting spaces. We require additional classroom space to deliver our small group teaching. As other expansions are planned in the Faculty, these spaces will NOT meet the needs of the entire campus.

We are also in need of large classroom spaces to accommodate 60 people. This will mean re-imagining large classroom space allocations and scheduling options across the Bannatyne campuses.

Five year implementation plan

Jan, '23	Budget proposal Budget decision
23-24 fiscal	Gearing up
24-25 academic	Phase I – 5 seats in each program
25-26 academic	Phase II – additional 5 seats in each program
26-27	Full implementation of 10 seats in each

Final comments

This is a **proposal** that may go forward to the President.

This is **NOT** an approved program of expansion.

Ultimately government decides as a go/no-go.

College Council Motion

The College Council approves the OT & PT program expansion elements as presented.