



Manitoba Centre for Health Policy

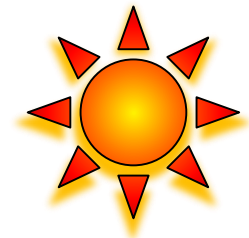
Accreditation 2020

Project Costs and Timelines



Modules

- [Introduction to MCHP](#) History, operations, resources and products of MCHP
- [Data Repository and Research Resources](#) Databases housed in the Data Repository and Research Tools for using and analyzing the data: Research Protocol, Glossary, and Concept Dictionary.
- [Administrative Requirements and Research Support](#) Services and Assistance provided
- [Privacy, Security and Confidentiality](#) Access, use, and disclosure of MCHP data, i.e., legal requirements, basically obligations and how to meet them.
- [Project Costs and Timelines](#)



MCHP Accreditation Home



Timeline

How Long Will This Take?

Minimum 4 months

Feasibility Review

10 business days

A completed [feasibility request](#) & proposal is required for the review.



Applying for Access

Approvals - Time Frames

- MCHP Approval and Estimate (2 weeks)
- [HIPIC](#), [HREB](#), Other approvals (4 weeks)
 - › May be submitted concurrently
 - › Some approval bodies may take longer (WRHA approval for external data may take 6+ weeks)
 - › HREB requires: [CV for the PI](#); [TCP CORE:2](#); [PHIA orientation](#)
- [Contract/Private Funding](#) (12 weeks)
 - › Fee for review is applied
- Researcher Agreements (3 weeks)



Provision of System Resources

1 week

- Creation of accounts
- Allocation of project space
- Orientation
- Access



Actual Time for Analysis

At the time of the feasibility review we will provide an estimate of analyst time and cost

BUT...



Calendar Time to Completion

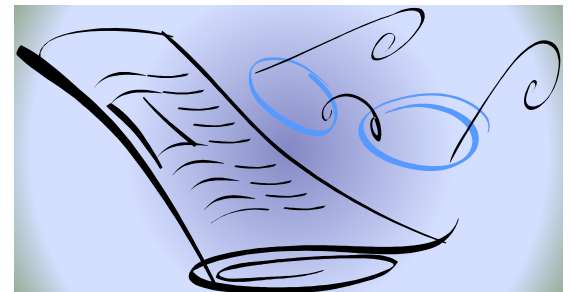
- Calendar time for analysis will be longer than you expect.
- Calendar time depends on
 - Direction from PI/researcher
 - Time for meetings, discussion, feedback
 - Interpretation
 - Analysis direction
 - Analyst workload



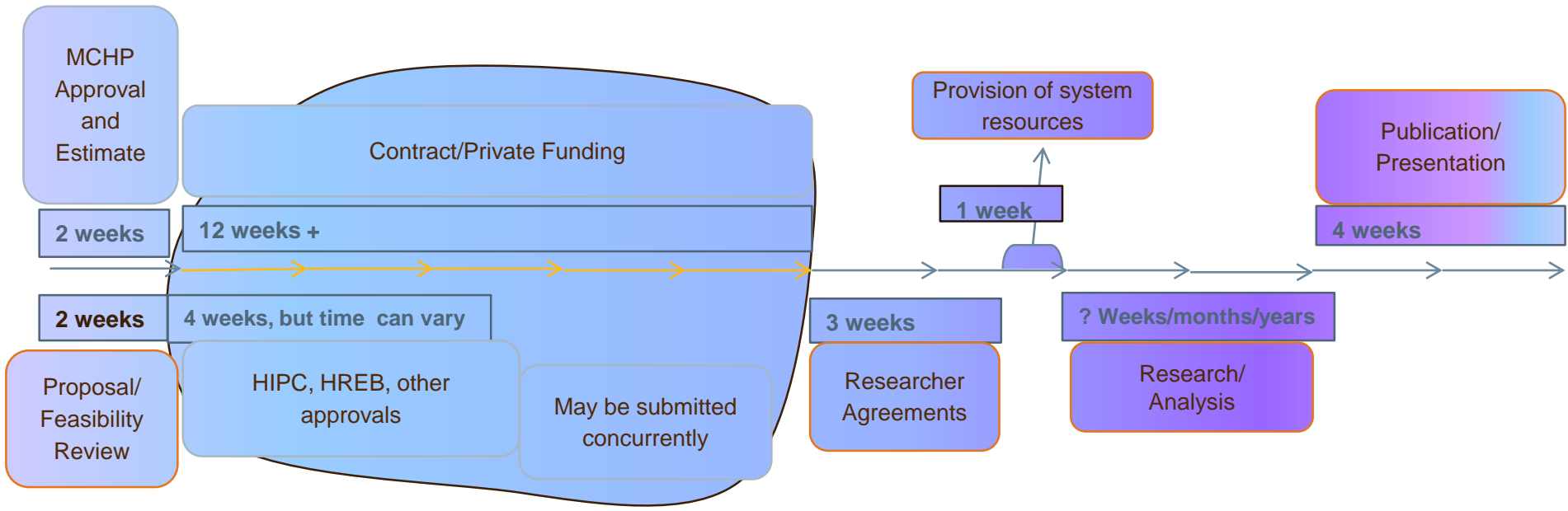
Publication/Presentation

4 weeks

- Manitoba Health and MCHP must receive copies of the publication or presentation 30 days prior to public release.
- Deliverables and other contractual agreements may have specific timetables.
- Other data providers will require copies 30 days prior to public release.



Policies on Use and Disclosure



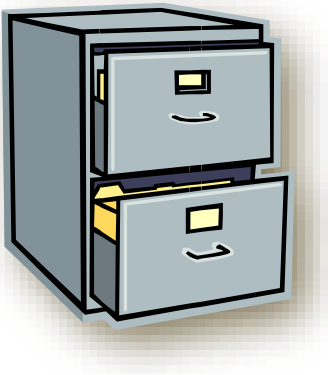
Ongoing Approvals

- Projects must maintain HREB annual [update/approval](#)
- A project is closed and archived when:
 - › Annual Renewal Certificate is not received
 - › Receipt of HREB Final project status report



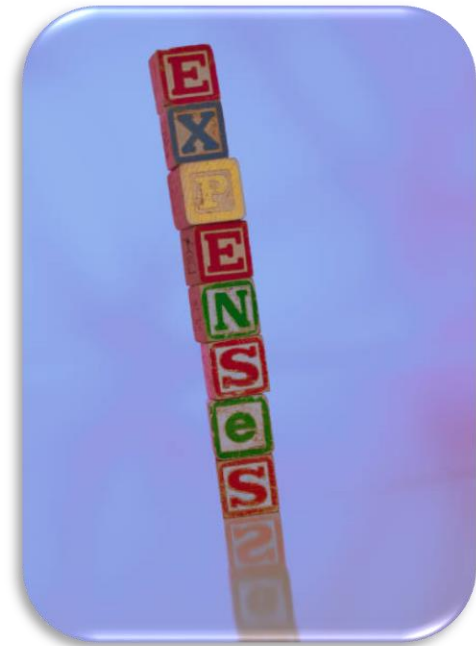
Archived Projects

- Projects are archived when completed.
- Archived copies are retained for at least seven years but no more than ten years.
- Archived copies of data files will only be un-archived with current approvals.



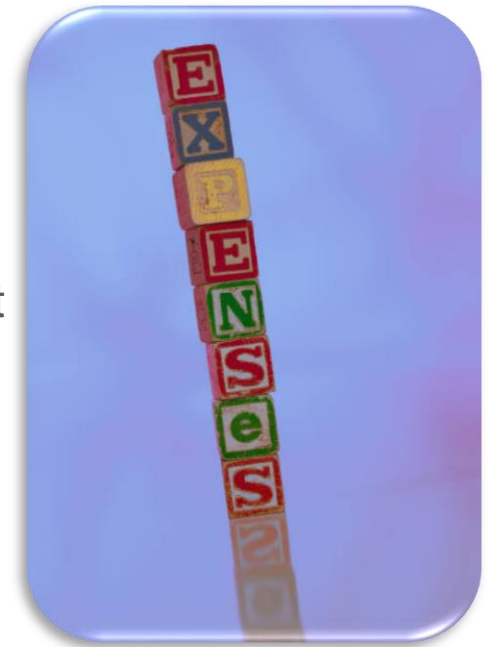
Costs

- Estimated project cost from MCHP is done with feasibility request.
- Work done by MCHP Analyst is done on cost recovery basis and invoiced each month.
- Hourly rate \$132/hour until further notice
 - › Student projects differential rates
 - › Private sector funded projects are invoiced a review fee.
- Work not identified clearly in proposal may increase costs.
- Faculty researchers are encouraged to apply for the MCHP Rady Faculty Research Support Fund ([Terms of Reference](#)).



RAS Costs

- Data Extraction and Support charged as per other projects
- Beginning in April 2018, RAS use is \$6,000 per user annually, with programmer hours adding cost at \$132/hour.
- Using more than 300 programmer hours or 100gb of space will incur overage charges.
- Students working only on their thesis/dissertation project are not charged the RAS user fee.



Thank You / Questions

- umanitoba.ca/centres/mchp
- facebook.com/mchp.umanitoba
- twitter.com/um_mchp
(@um_mchp)