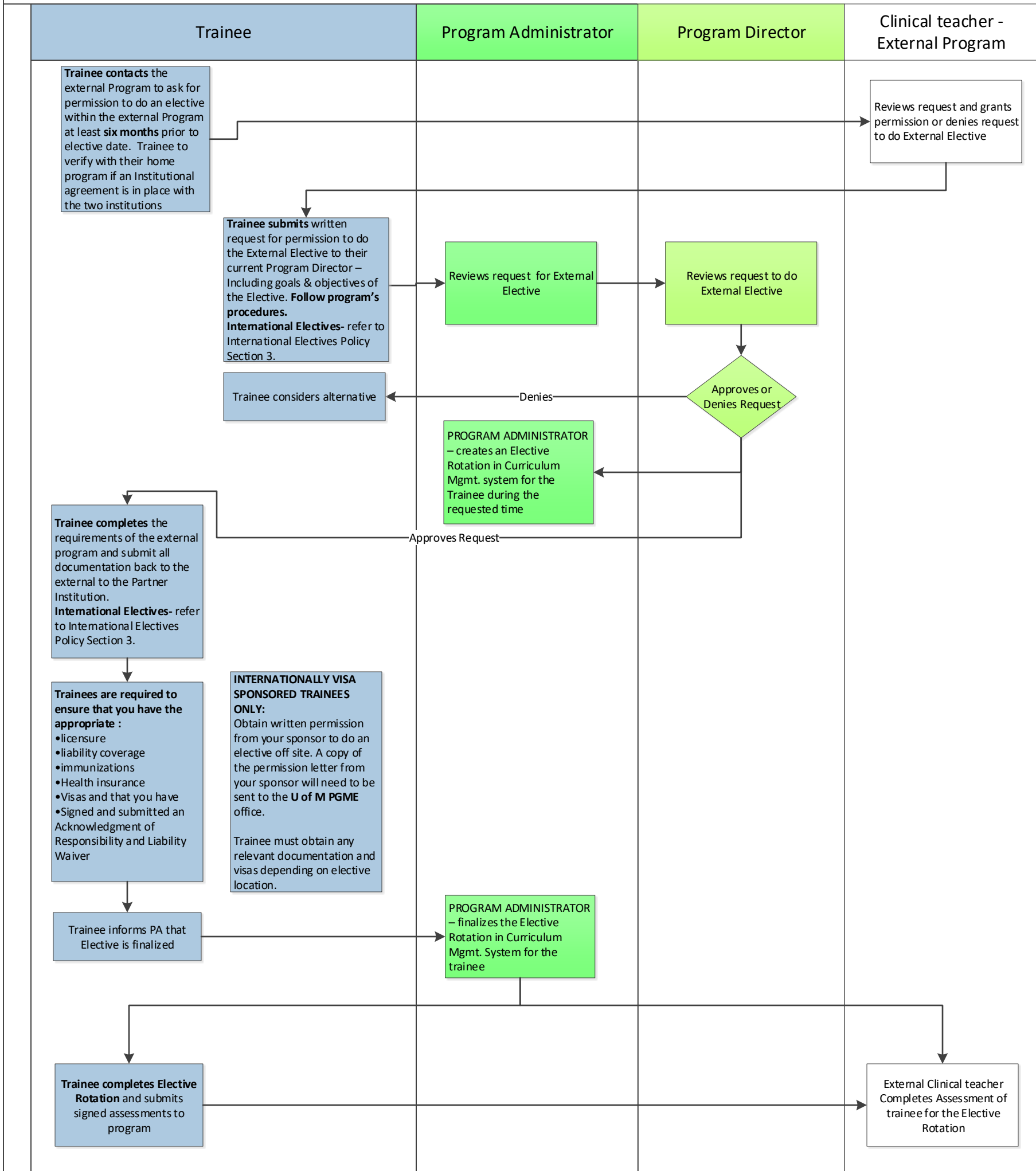




**Notes:** To complete an elective at another medical school, the trainee must get written permission from their current Program Director. The trainee must follow the registration instructions of the destination medical school or institution, the regulations of the appropriate licensing authority, and membership rules of the appropriate malpractice insurance carrier. For International Electives, trainees are required to follow the PGME Internal Electives Policy

**Process: External Electives – U of M Trainees**



**References:**

PGME Trainee Handbook

PGME International Electives Policy

Process: <b>External Electives - U of M PGME Trainees</b>	Prepared By: PGME Office	Approved By: PGME Office	Date Page 1 of 1	Date Nov 2019
--	-----------------------------	-----------------------------	---------------------	------------------