

Connecting remotely to VIP

UofM campus staff:

If use a workstation on the UofM campus and run VIP as a program on your workstation you can continue to access VIP by first connecting to your desktop via RDP.

Please see MedIT's documentation on configuring and connecting to your Remote Desktop

HSC / Shared Health campus staff:

You will need to connect to the UofM's VPN and then will be able to connect to a terminal server configured solely for you use by MedIT.

The instructions below are to assist with connecting to the UofM VPN and then how to connect to the VIP application server.

Note for both the VPN and Remote desktop connection you will use your UofM username and password; The username and password you use to access JUMP and email.

Connecting to the UofM VPN:

The below steps are a brief outline how to install and configure the UofM VPN client software for Windows.

For full details and other operating systems please follow the IST VPN instructions found at

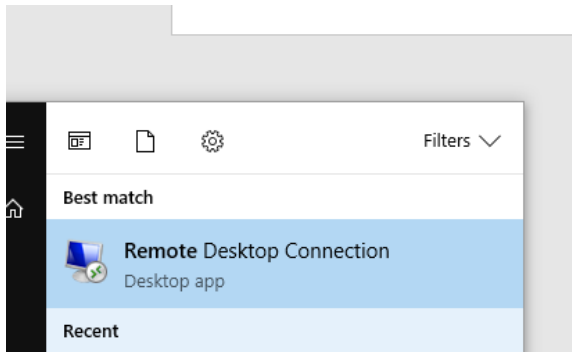
<https://umanitoba.ca/computing/ist/connect/virtualpn.html>

1. Download the installer for Pulse VPN for Windows 64bit from [Windows 64bit](#)
2. If you are presented with the option, RUN the file. Otherwise open your Downloads folder then double click the installer file.
3. If prompted with a warning about opening the file, click **OK**.
4. Click through the install screens.
5. Once installed right-click the Pulse icon in the system tray and choose **Open Pulse Secure**.
6. Click the "+" sign to configure the connection.
7. Enter **UofM VPN** for the Name of the connection. (you can choose another name if preferred.
8. Enter the Server URL: **vpn.cc.umanitoba.ca**
9. Click Add
10. Back in the Pulse Secure client windows click **Connect**.
11. When prompted click **Proceed**.
12. Select Active Directory (Staff Only)
13. Check off Save Settings then click **Connect**.

14. When prompted Enter your User Name (your UMnetID)
15. Enter your Password
16. Click Connect

Connecting to the VIP Terminal Server:

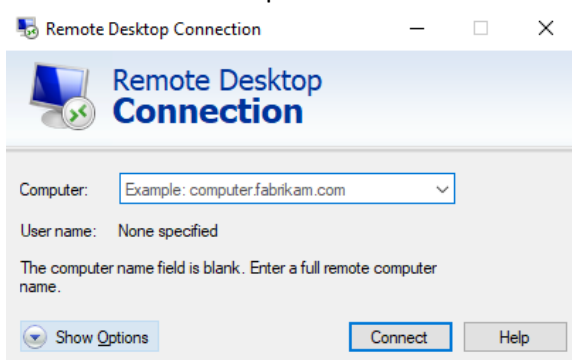
1. Click on **Start** then type *Remote Desktop Connection*
2. Right-Click on the **Remote Desktop Connection** in the best match search results and choose **Pin to Start**. This is add the icon to your start menu.



3. Click on **Start** then click on Remote Desktop Connection.

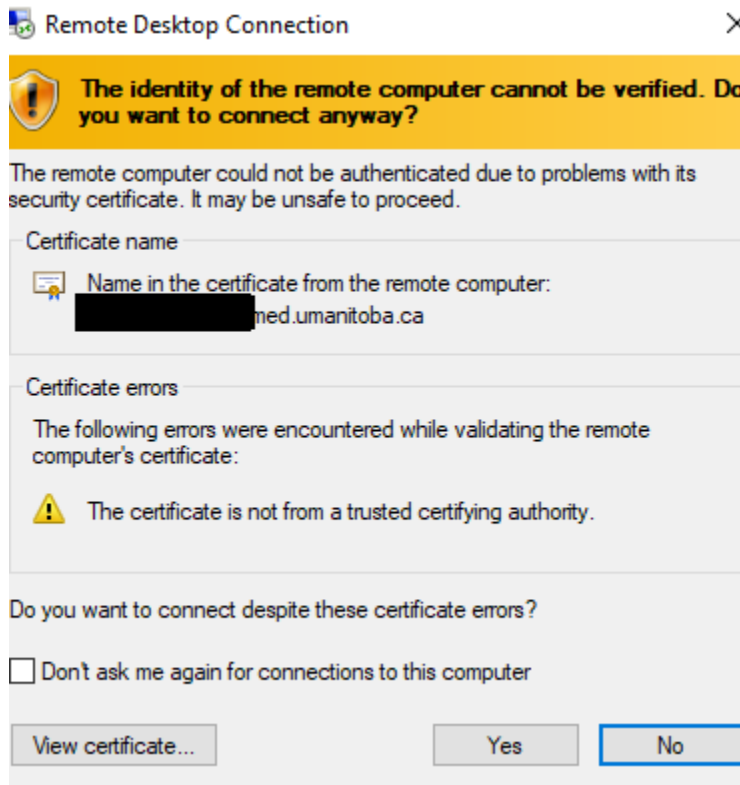


4. In the Remote Desktop Connection window that opens click on **Show Details** on the bottom left.



- a. This will display extended settings.
In the **Computer** field enter your office computer name for example:
medtermserv.med.umantiba.ca
 - b. In the **User Name** field enter your UMNetID preceded by **ad**.
For example: ***ad\umnetid***
5. Click **Connect**. You will be prompted to enter your UMNetID Password.

6. The first time you connect you may be prompted that the identity of the remote computer cannot be verified. Check the box for *Don't ask me again for connections to this computer* then click **Yes**.



7. A new window will open showing the remote desktop VIP server.
8. Launch VIP from the Desktop icon.