



# Community Consultations Project: CIC Western Region

Alberta Settlement and Integration Summit

October 30 & 31, 2014

Edmonton, AB

**RDI Team:**

Bill Ashton  
Rachael Pettigrew  
Helen Galatsanou

**Partners:**

John Biles, CIC  
Robert Vineberg, IRW  
Lori Wilkinson, U of M  
Anna Kirova, U of A  
Miu Chung Yan, UBC  
Joe Garcea, U of S

# Research Overview

## Immigration Settlement Services and Gaps in CIC's Western Region Project

### An introduction

- Purpose
- Partners
- Governance
- Participants
- Process
- Products
- Next steps
- Outcomes of research

# What is the Purpose?

- Inventory newcomer settlement services available in selected rural and small cities across CIC's Western region
- Determine gaps in services, coordination (and funding) in selected communities
- Understand settlement partnership opportunities in selected communities
- Determine level of partnerships

# Partners

## Partners:

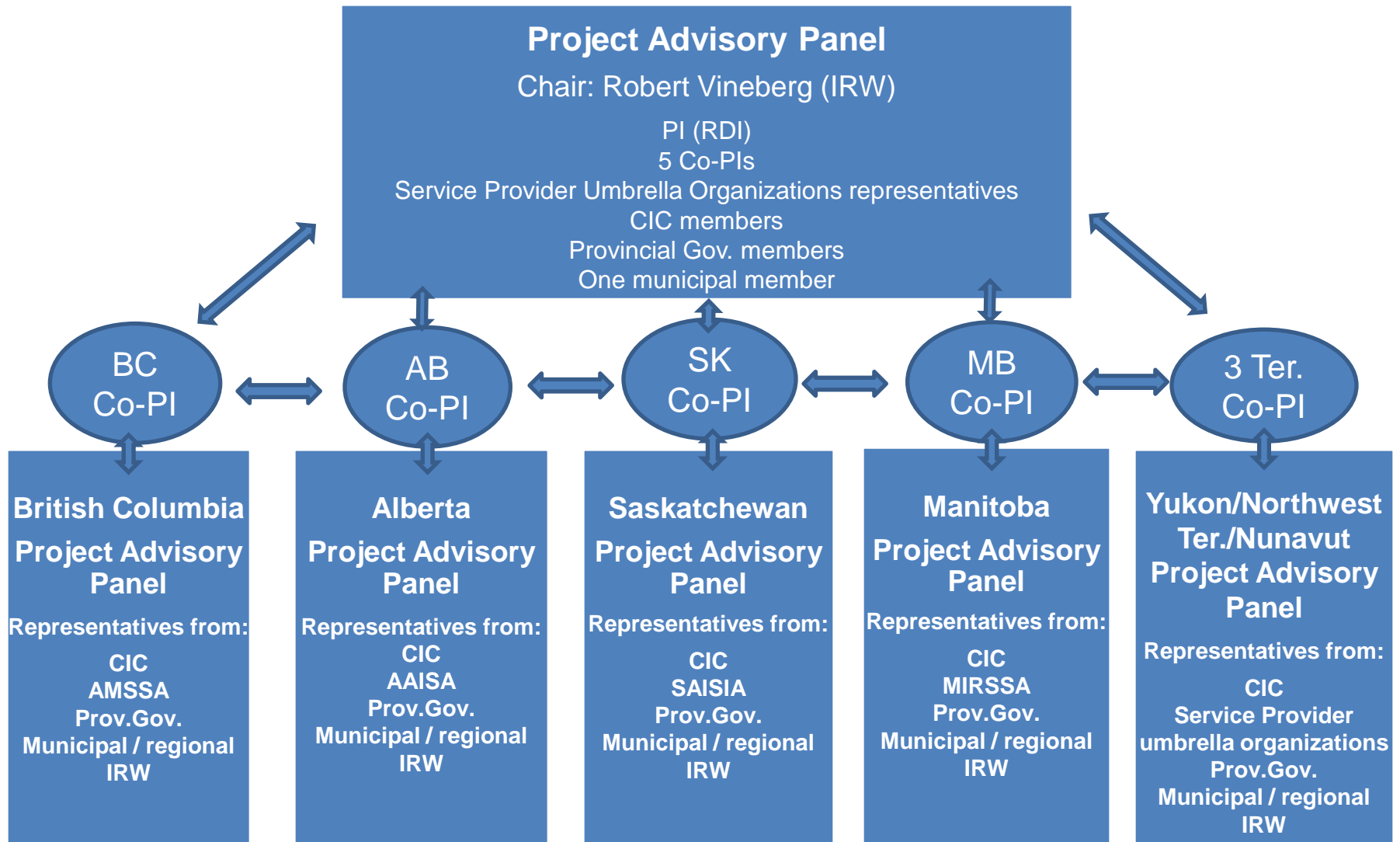
John Biles, CIC  
Robert Vineberg, IRW  
Lori Wilkinson, U of M  
Joe Garcea, U of S  
Anna Kirova, U of A  
Miu Chung Yan, UBC  
Territories, TBA

## Rural Development Institute; Brandon University:

Bill Ashton  
Rachael Pettigrew  
Helen Galatsanou



# Project Overview: Governance



# What is Immigration Research West?

## Objectives of IRW

- Understanding the nature and structure of best practices within the current system with regard to immigrant integration, citizenship and cohesion;
- Understanding how current immigration policies and programs interact with existing integration policies and programs, and other policies and programs (e.g., poverty, health, minimum wage, housing); and
- Identifying practical and implementable options for enhancing integration, citizenship and cohesion in the near and more distant future.

# Who are the Participants?

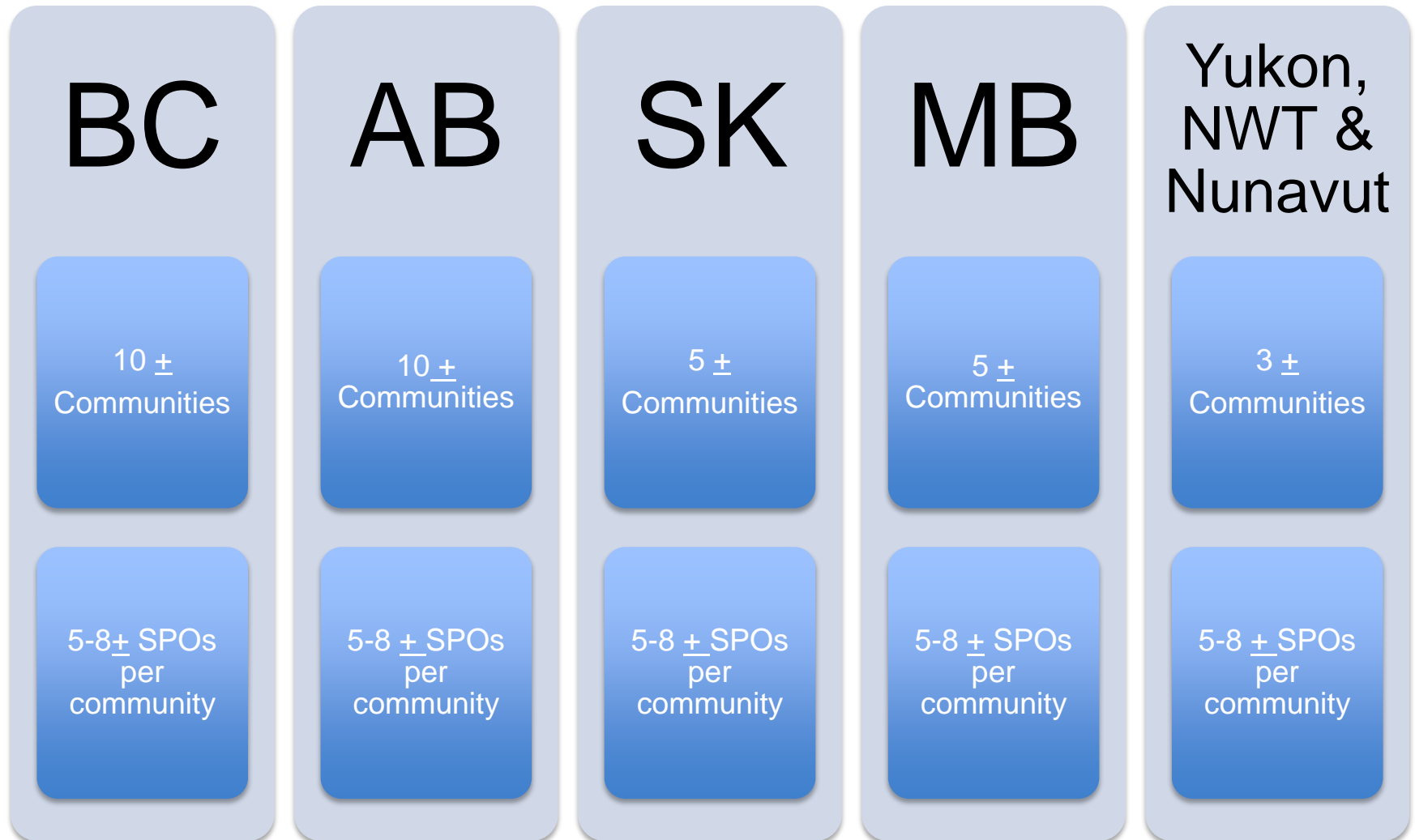
- Rural and small cities selected by Provincial Advisory Panels
- Criteria:
  - Rural and small cities (not large cities e.g., Calgary)
  - At least 1 CIC funded SPO
  - No LIP funding
  - Receives immigrants annually, both new and well established
  - Representative of province in pop. size & geography
- 5-8 newcomer settlement SPOs per community

# AB Provincial Advisory Panel composition

<b>Anna Kirova</b>	<b>Co-Principal Investigator and Chair</b> Professor of Education, University of Alberta
<b>John Biles</b>	<b>Federal Government member:</b> Citizenship and Immigration Canada
<b>Alice Wong</b>	<b>Provincial government member:</b> Alberta Jobs, Skills, Training and Labour
<b>Jennifer Fowler</b> and/or <b>Shahriyar Khan</b>	<b>Municipal government member:</b> Multicultural Relations and Community Services, City of Edmonton
<b>Christina Nsaliwa</b>	<b>AISA Representatives:</b> Executive Director Edmonton Immigrant Services Association
<b>Mohhamed Y. Idriss</b>	Service Manager, BCIS Brooks & County Immigration Services
<b>Sarah Amies</b>	Director, Lethbridge Immigrant Services
<b>Abdie Kazemipur</b>	<b>Immigration Research West Representatives:</b> Research Chair in Social Sciences, Professor of Sociology, the University of Lethbridge
<b>Lori Wilkinson</b>	Professor, Department of Sociology University of Manitoba & Director, Immigration Research West/Recherche oust immigration



# Participants Selection



# Alberta Community Sample

- Communities receiving small number of newcomers per year(e.g., 100-250)
  - Medicine Hat
  - Okotoks/High River/ Banff/Canmore
  - Lloydminster
- Communities receiving between 250-550 newcomers per year
  - Brooks
  - Lethbridge
  - Grand Prairie
- Communities receiving more than 550 newcomers per year
  - Red Deer
  - Wood Buffalo

# What is the Process?

- **Governance**
  - 1 Project Advisory Panel
  - 4 Provincial /1 Territorial Panels
- **Conduct research by Province/Territory**
  - Co-PIs access modest budget

Survey tasks	Provincial Umbrella organizations with co-PIs
Create work plan	√
Select communities / SPOs	√
Conduct phone interviews	√
Facilitate community feedback sessions	√

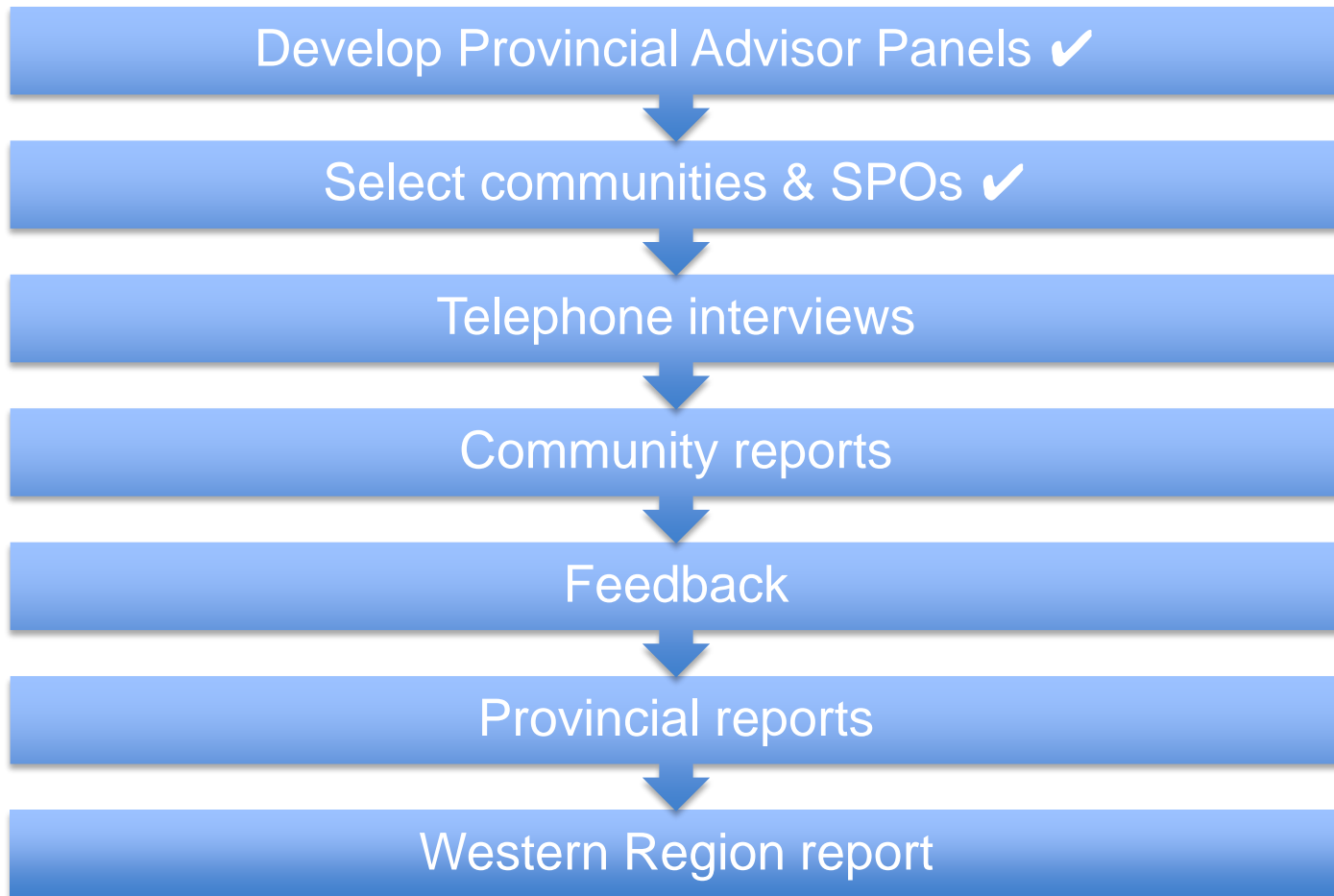
# What is the Process?

- **Analyze data**
  - Co-PIs and validated by SPOs
- **Communicate results**
  - Co-PIs prepare Community reports
  - Validate survey results in draft report
    - Feedback via email and/or phone, and/or group session, and including other settlement stakeholders
  - Co-PIs prepare provincial report

# What are the Products?

- **Reports**
  - Community reports (30 +/-)
  - 4 provincial, 1 territorial reports
  - Final Western region project report to CIC

# Next Steps now to December 2014



# Outcomes of Research

- Identify existing services, gaps and opportunities
- Potential to enhance settlement services in Western Canada
- Identifying opportunities for future LIPs

# Questions?

## Immigration Settlement Services and Gaps in CIC's Western Region Project





# Thank You