



UNIVERSITY
OF MANITOBA

Environmental Health
and Safety

Fort Garry Office
191 Extended Education Complex
Winnipeg, Manitoba
Canada R3T 2N2
Tel: (204) 474-6633
Fax: (204) 474-7629

Bannatyne Office
P310 Pathology Building
Winnipeg, Manitoba
Canada R3E 0W3
Tel: (204) 789-3613
Fax: (204) 789-3906

Radiation Safety

Updated July 2018

Radioactive Material Security FAQ

Radioisotope permitted labs are required to **demonstrate that you can control access to radioactive material.** Provisions should be in place to ensure the security of stock vials and sealed sources and, to **prevent access by non-designated workers.** *One barrier that takes time to break fulfills this requirement.*

Who are considered non-designated workers?

It is personnel who are not listed as a designated worker on an Internal Radioisotope Permit. They could be from Physical Plant, IT, contractors working after hours, service reps, couriers (delivery), new lab workers and, students and staff from other labs.

Does my locked radioisotope permitted lab door demonstrate access control?

NO! The majority of the non-designated workers listed above will have key access to the lab, so then access is not controlled.

What if I lock the storage area (fridge, freezer, cupboard) that contains the radioactive material?

That would meet the requirement as long as it is dedicated for radioactive material (RAM) only. It is to remain locked all the time (even during the day) and the location of the key is not known to non-designated workers.

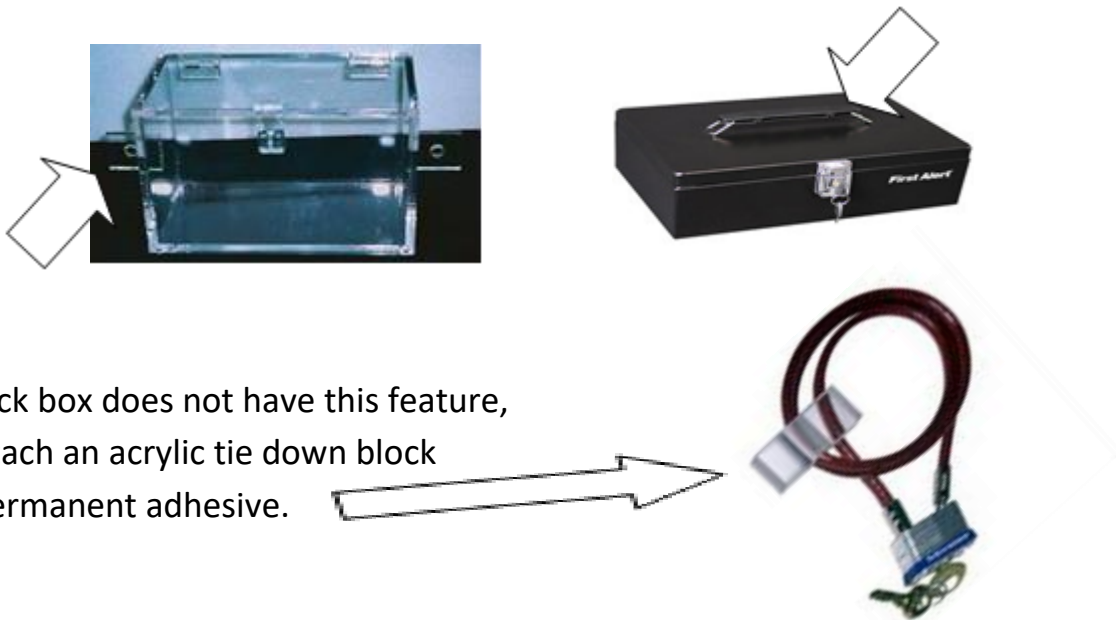
If the storage area is not dedicated for RAM and non-designated workers have access, then this would not be considered a barrier (access not controlled).



If I don't have a dedicated storage area, would a lock box be OK?

Yes, as long as the lock box is lockable and secured to the storage area. This would be considered a barrier (access controlled) as this prevents the removal of the lock box from the storage area by non-designated workers.

Lock the lock box to a shelf in the storage area. Do this by placing a flexible cable with a padlock through the opening or handle of the lock box (indicated by the arrows below) and then through the shelf.



If the lock box does not have this feature, then attach an acrylic tie down block using permanent adhesive.



What type of lock should be used?

A key lock that is rustproof for use in high humidity is preferred.

Store the key in a location that is only known to designated workers listed on your radioisotope permit. Whenever a designated worker is removed from the permit, change the storage location of the key.

If you have a combination lock, then the combination should be changed whenever a designated worker is removed from the permit.

For further information on this requirement and these products, please feel free to contact our office or email: radsafety@umanitoba.ca or visit the Radiation Safety Program webpage at: http://umanitoba.ca/admin/vp_admin/risk_management/ehso/rad_safety/index.html.