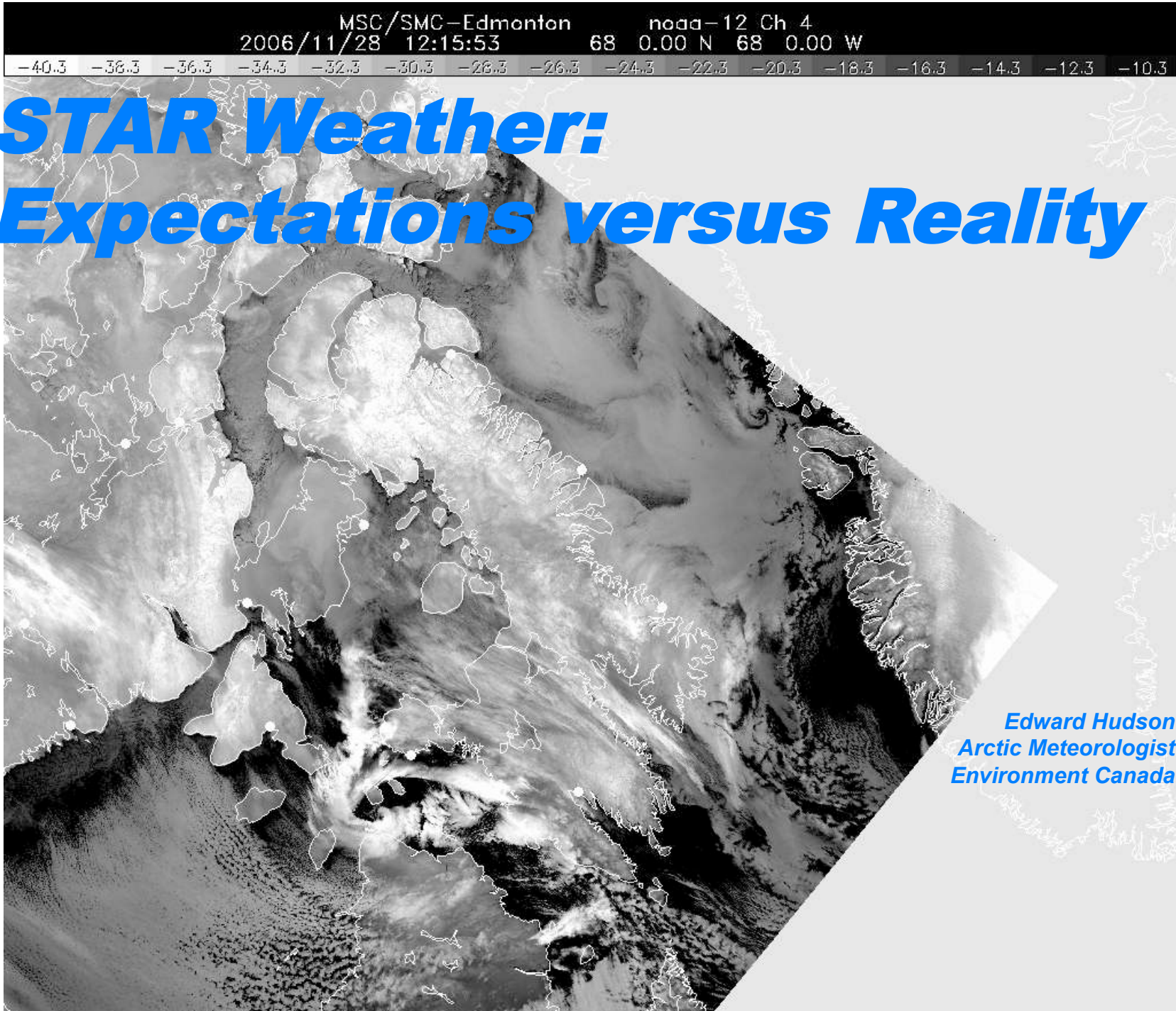


MSC/SMC-Edmonton noaa-12 Ch 4
2006/11/28 12:15:53 68 0.00 N 68 0.00 W

-40.3 -38.3 -36.3 -34.3 -32.3 -30.3 -28.3 -26.3 -24.3 -22.3 -20.3 -18.3 -16.3 -14.3 -12.3 -10.3

STAR Weather: Expectations versus Reality



*Edward Hudson
Arctic Meteorologist
Environment Canada*

Great Expectations – The menu

October and November

- o Wind
- o Polar Lows
- o Freezing Rain
- o Big Snows
- o Early Blizzard
- o Streamers
- o Turbulence / Wind Shear
- o Tidal fog

February

- o Wind
- o Snow
- o Blizzard conditions
- o Extreme cold / wind chill
- o Extreme warmth

Pangnirtung

Winter winds disrupt Pangnirtung fishing season Winter 1995/96

Avalanche near Pangnirtung January 2004

Pilots tell us that winds 090-150 above 15kts often lead to rotors and associated locally severe turbulence

Expectation - Uncommon events

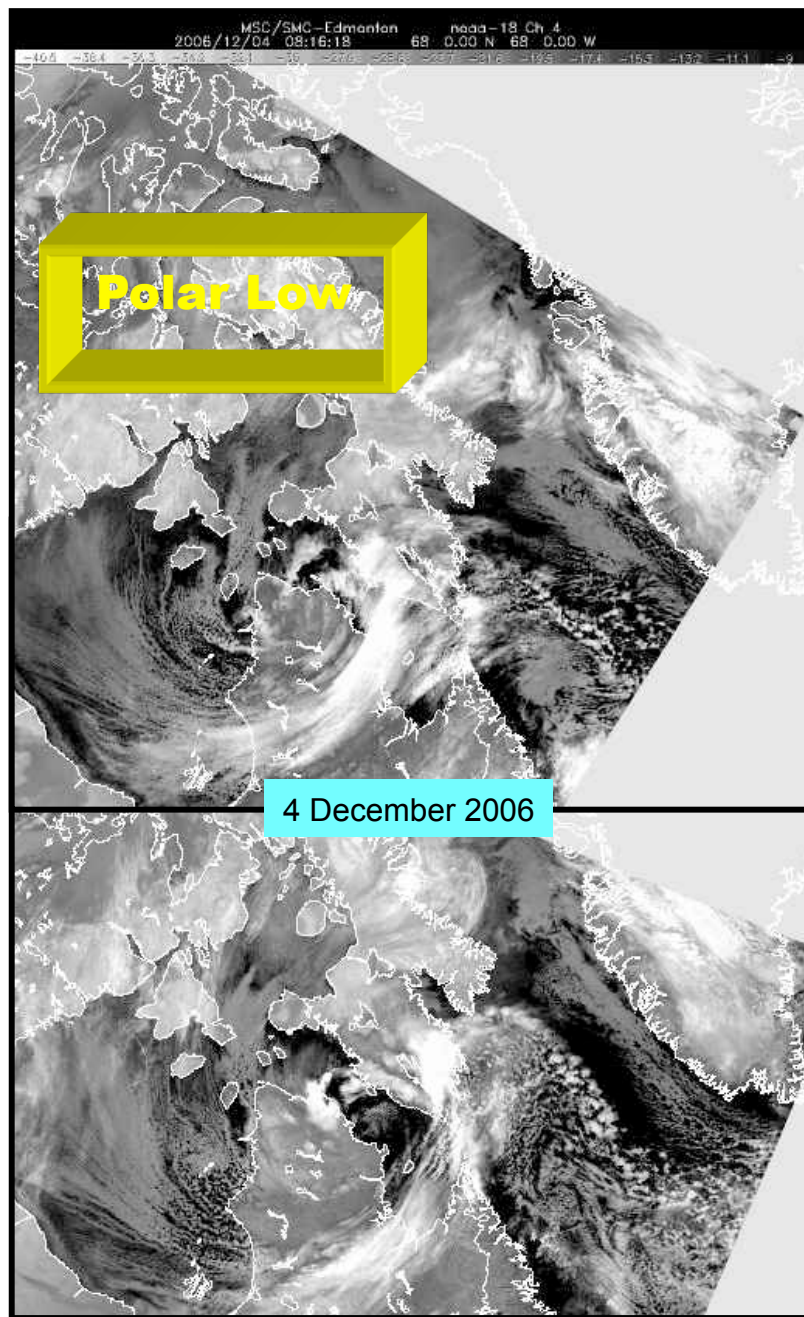
Polar Low

• Qikiqtarjuaq

3 November 2003

Polar Low

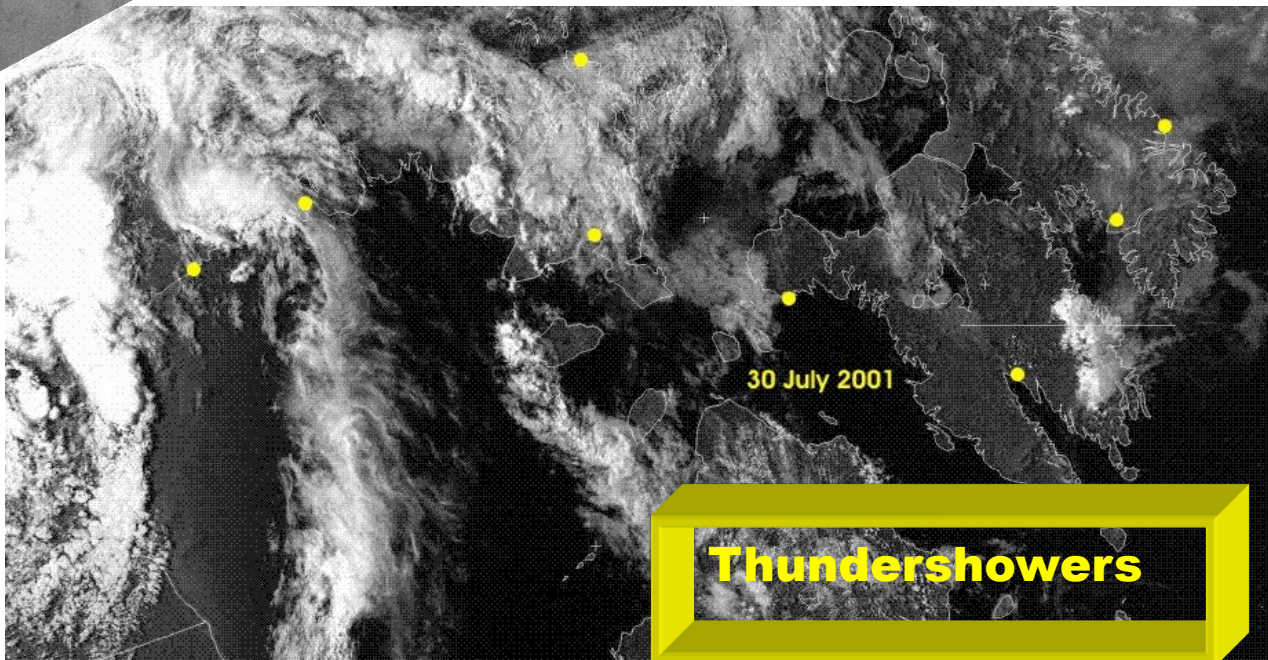
4 December 2006



Banding or ??

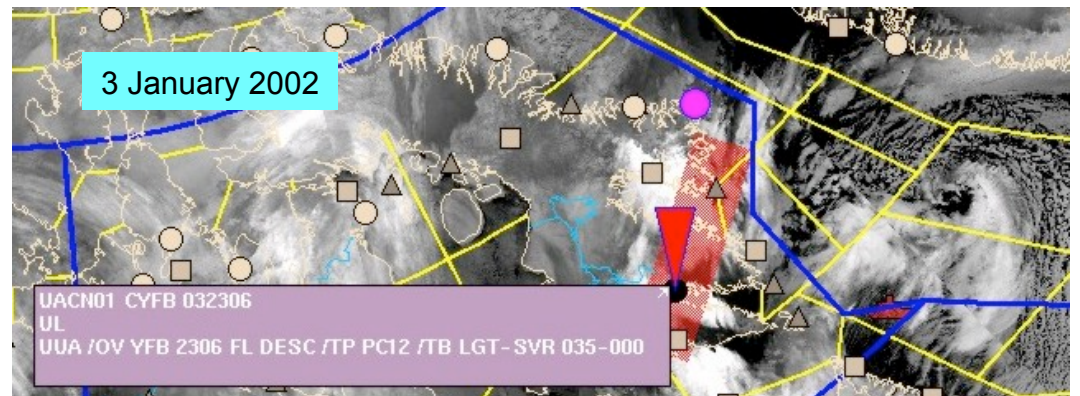
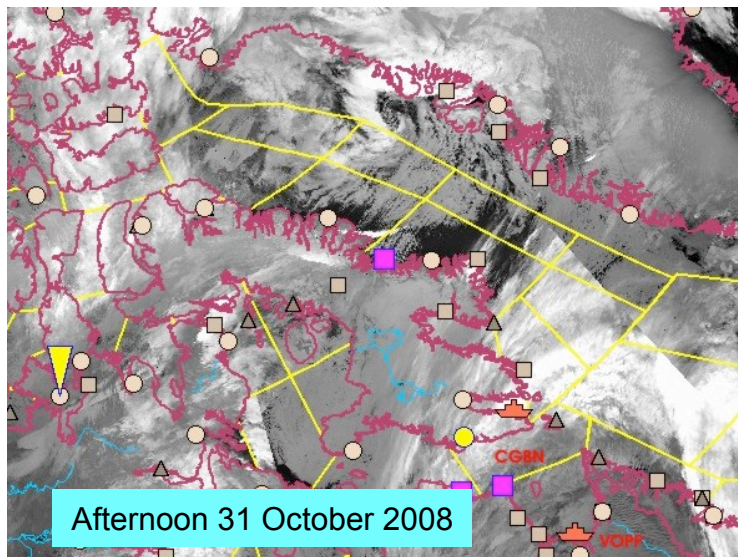
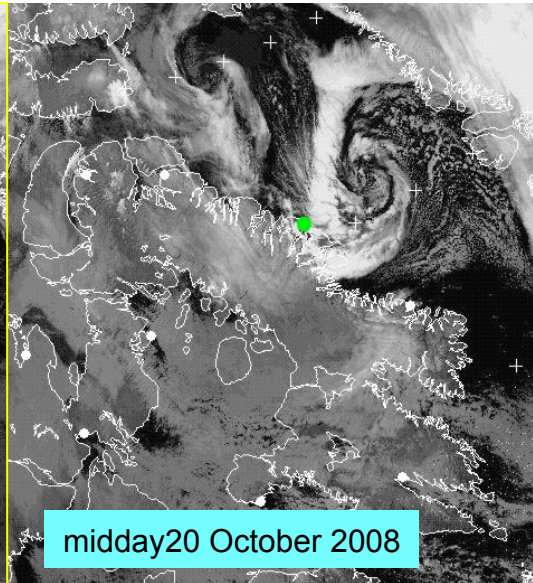
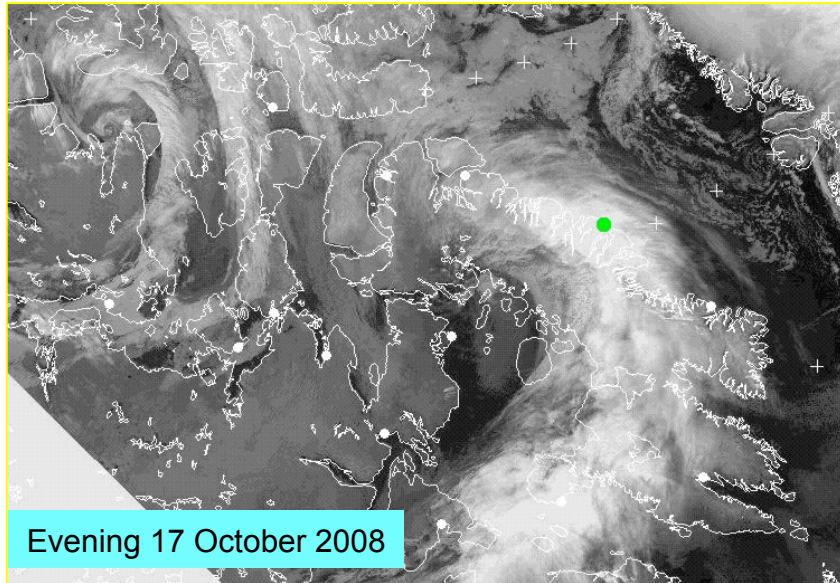
24 November 2005

Iqaluit



Thundershowers

Expectation – those uncommon events at or close to Iqaluit



But you got to sample remnants of Noel

Weather makes the news

Pangnirtung

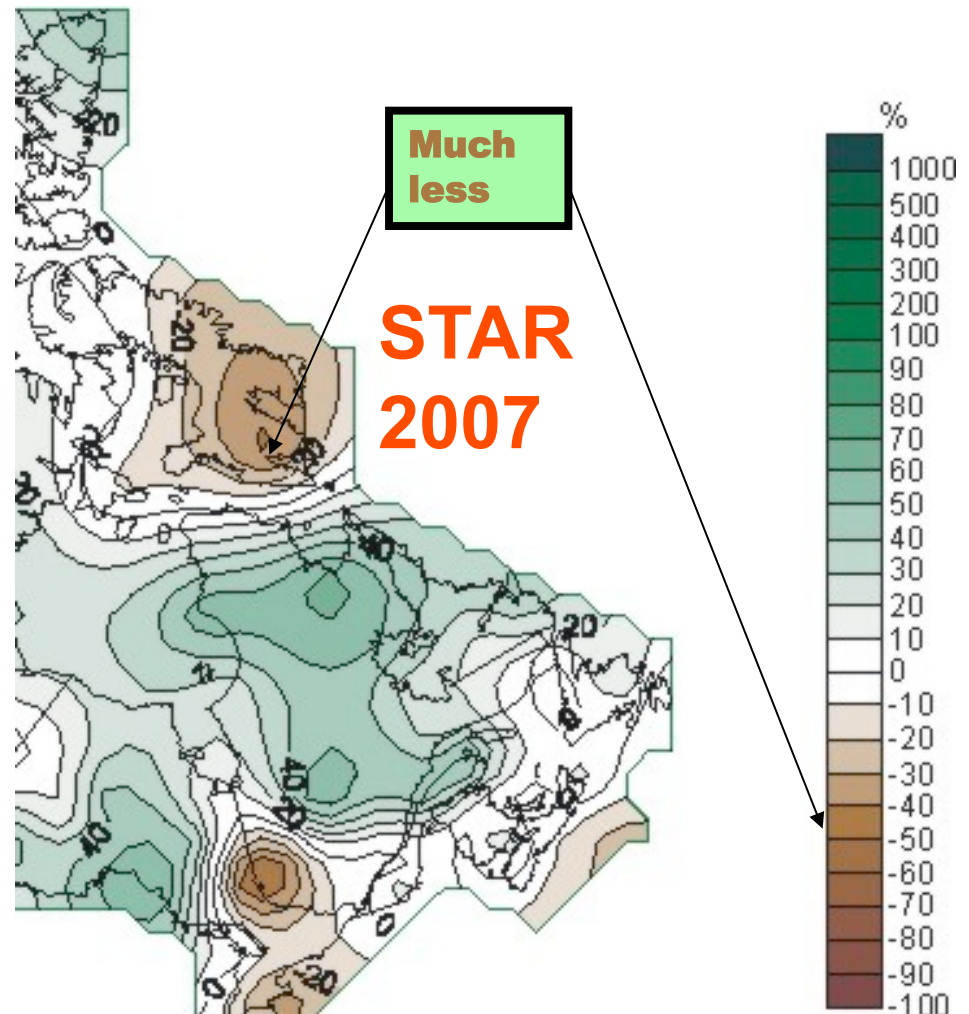
- **Winter winds disrupt Pangnirtung fishing season** Winter 1995/96
- **Avalanche near Pangnirtung** January 2004
- **Pilots say that winds 090-150 above 15kts often lead to rotors and associated locally severe turbulence**
- **Heavy rain and unusual 13 C temperatures produced rapid snow melt in the surrounding mountains and hills and led to a flash flood.** June 7 and 8 2008

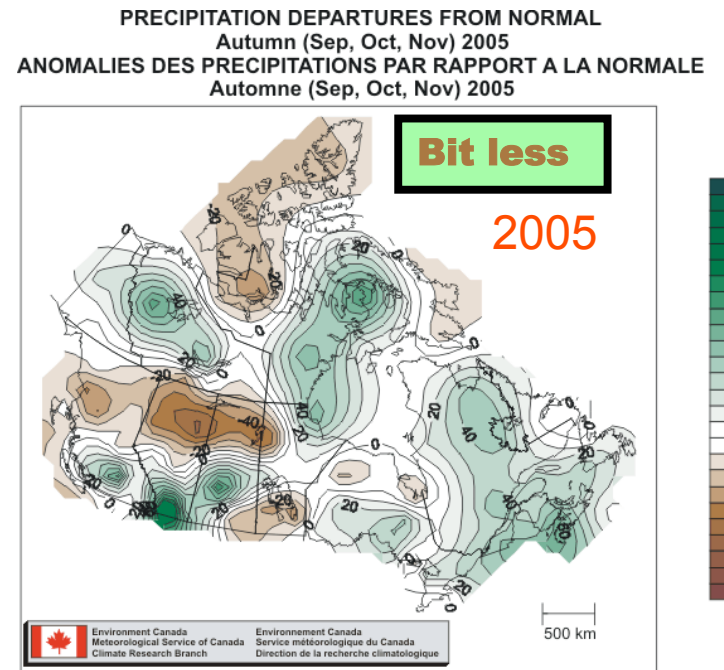
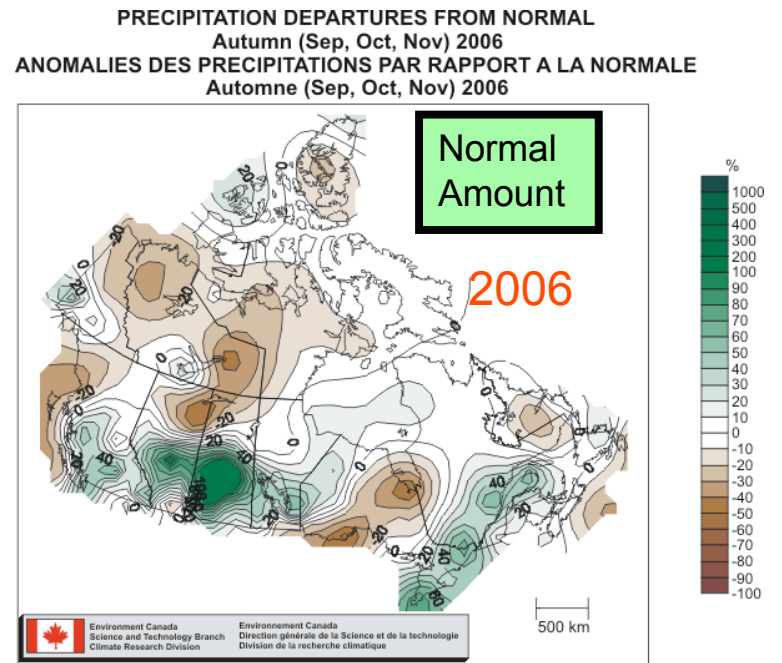
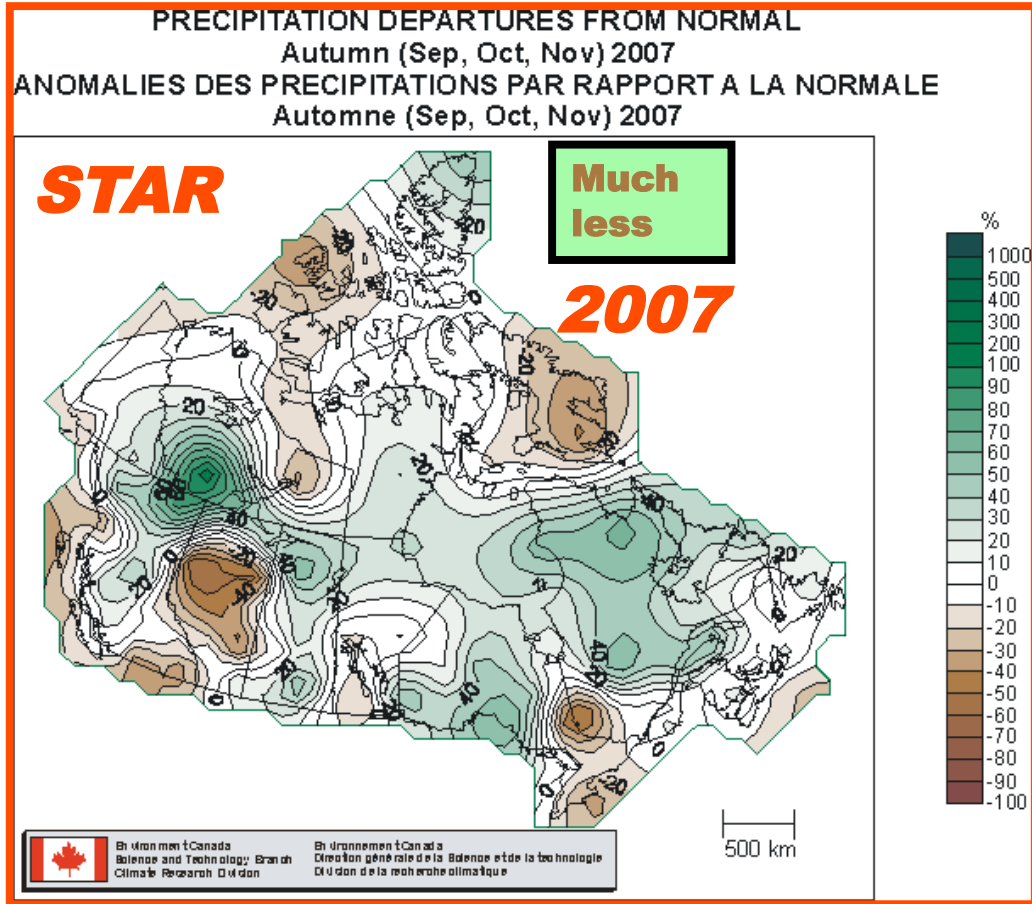
Iqaluit

- **Winter winds disrupt Pangnirtung fishing season** Winter 1995/96
- **Iqaluit may use fences to fight dangerous drifts - (CBC News)** Iqaluit's "Road to Nowhere" subdivision, developed a few years ago by the city, has been described by many as a "snow trap." November 22, 2005

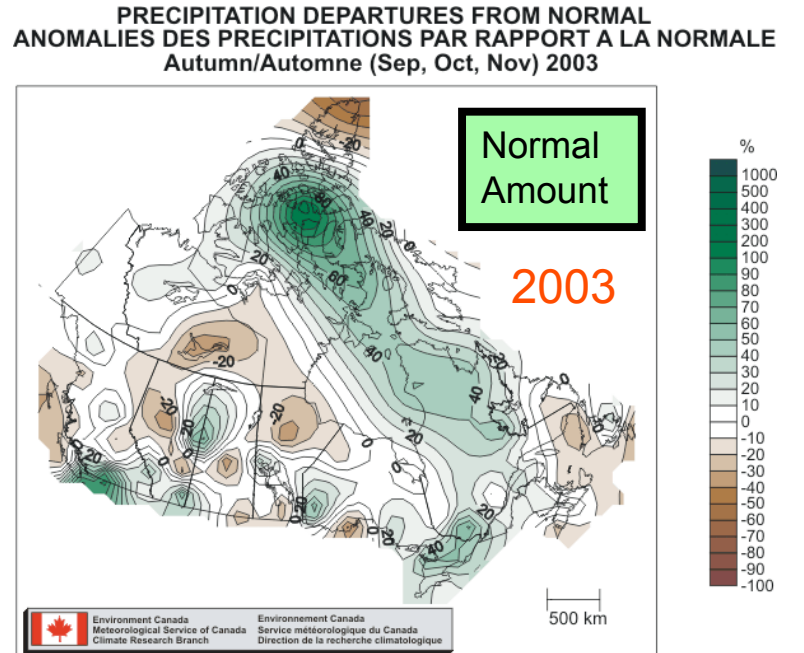
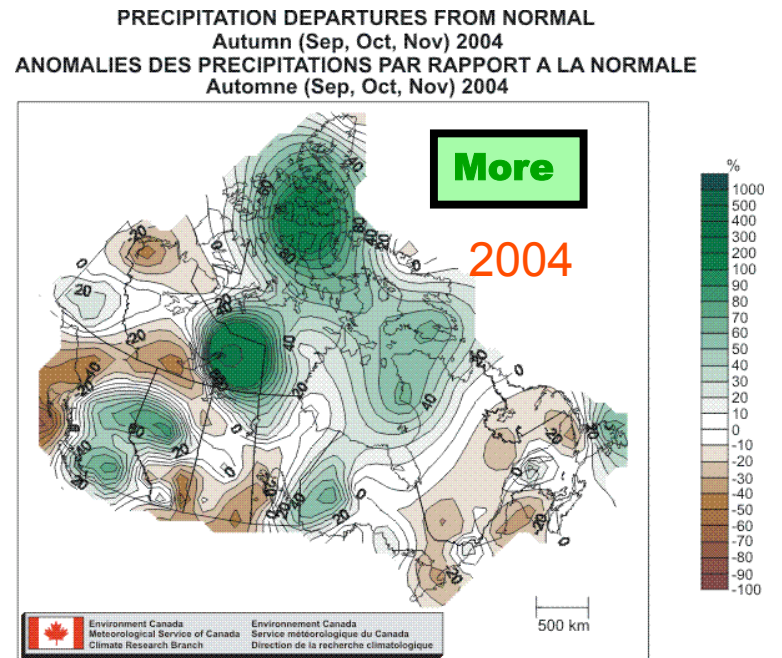
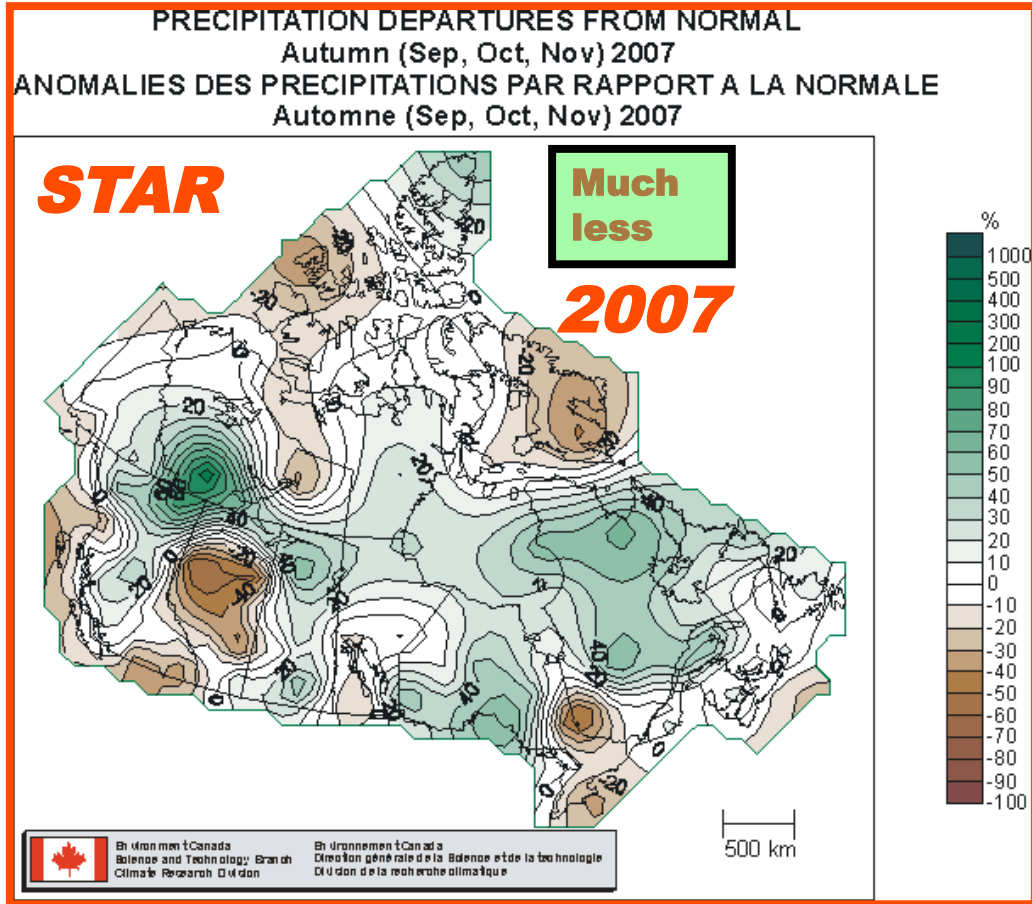
Precipitation Departures from Normal for September, October, November

Normals 1971-2000	Rainfall <i>mm</i>	Snowfall <i>cm</i>	Snow Depth month end <i>cm</i>
September	41.5	13.7	1
October	4.5	34.9	10
November	0.5	32.4	21

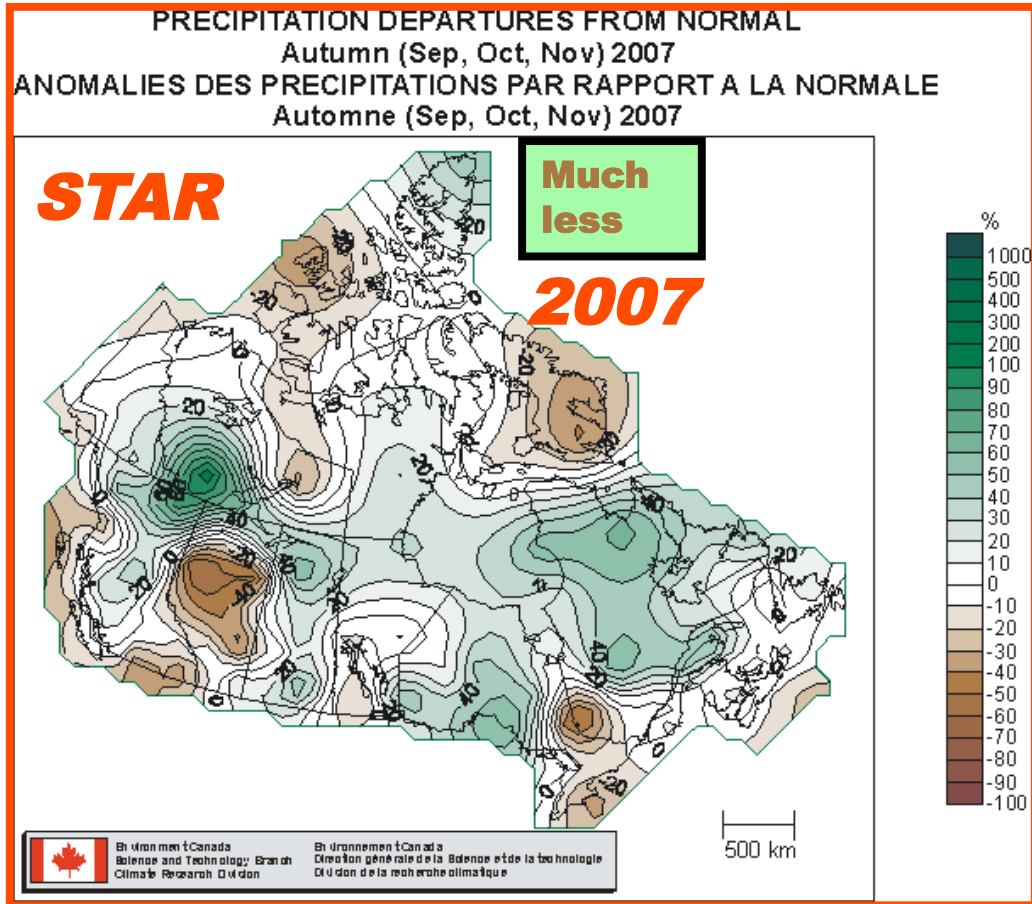




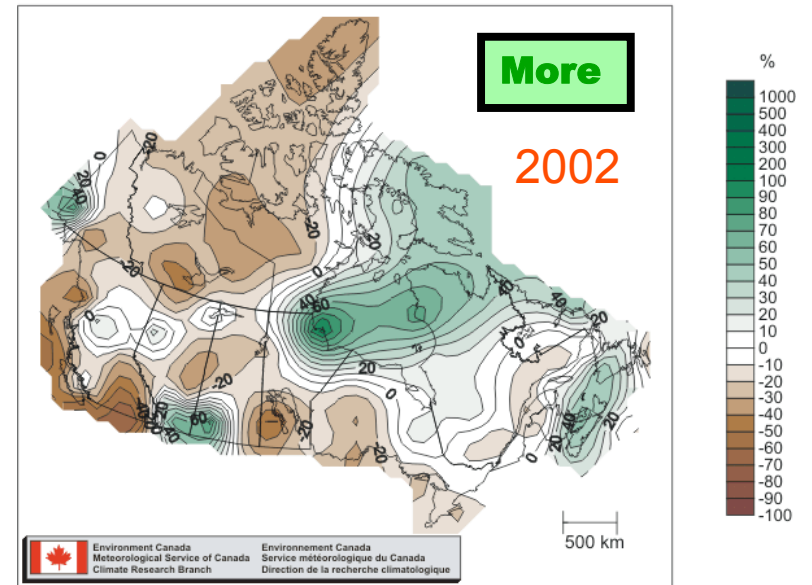
Normals 1971-2000	Rainfall <i>mm</i>	Snowfall <i>cm</i>	Snow Depth month end <i>cm</i>
September	41.5	13.7	1
October	4.5	34.9	10
November	0.5	32.4	21



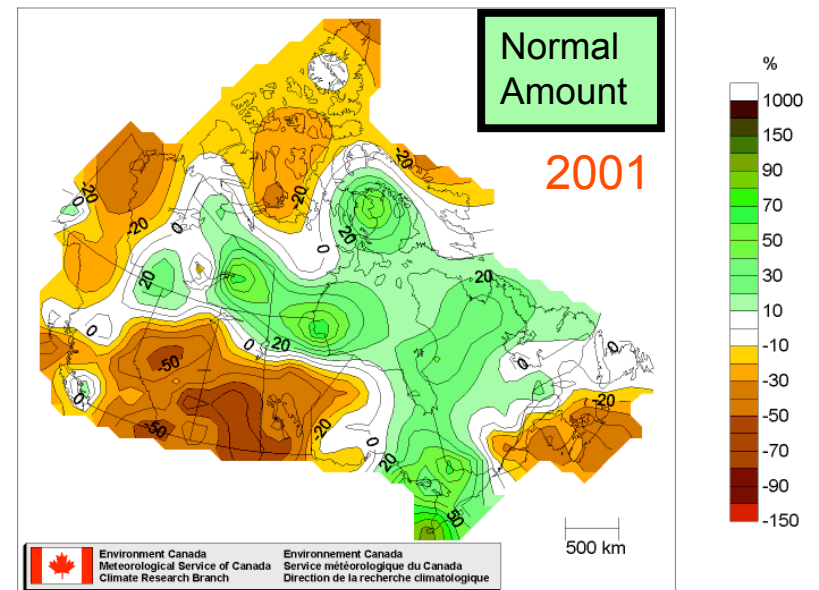
Normals 1971-2000	Rainfall <i>mm</i>	Snowfall <i>cm</i>	Snow Depth month end <i>cm</i>
September	41.5	13.7	1
October	4.5	34.9	10
November	0.5	32.4	21



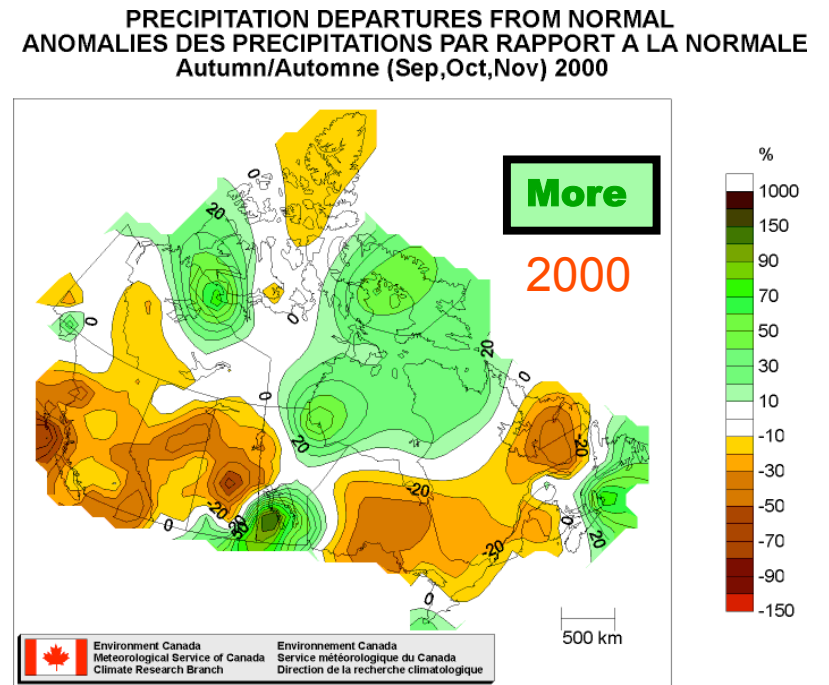
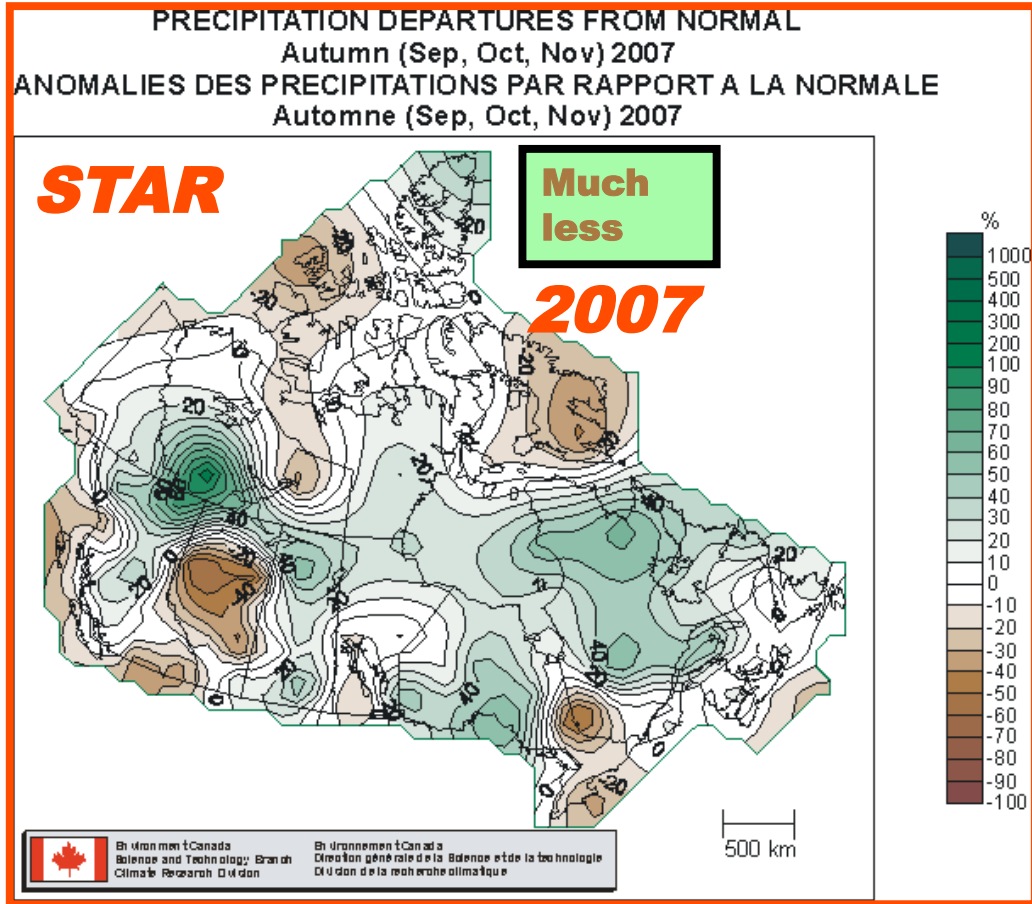
PRECIPITATION DEPARTURES FROM NORMAL
ANOMALIES DES PRECIPITATIONS PAR RAPPORT A LA NORMALE
Autumn/Automne (Sep, Oct, Nov) 2002



PRECIPITATION DEPARTURES FROM NORMAL
ANOMALIES DES PRECIPITATIONS PAR RAPPORT A LA NORMALE
Autumn/Automne (Sep, Oct, Nov) 2001



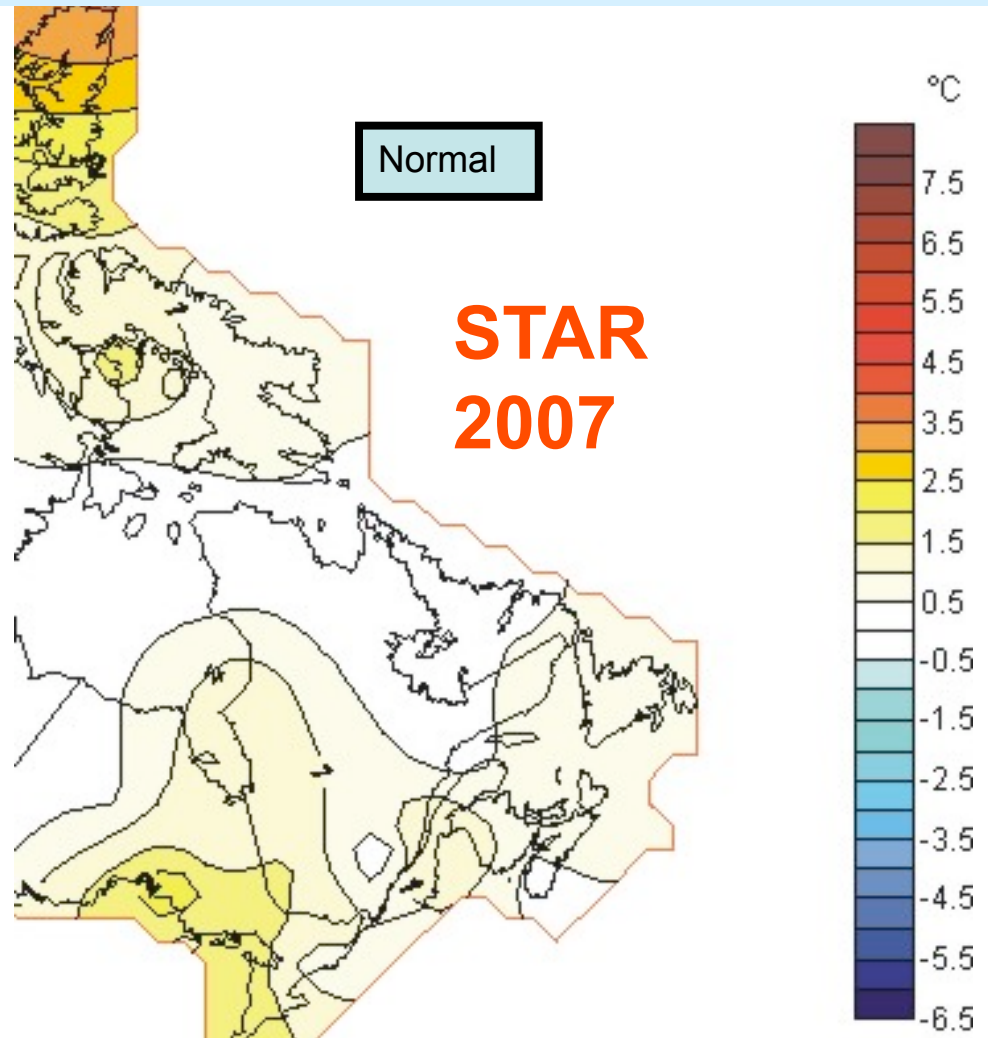
Normals 1971-2000	Rainfall <i>mm</i>	Snowfall <i>cm</i>	Snow Depth month end <i>cm</i>
September	41.5	13.7	1
October	4.5	34.9	10
November	0.5	32.4	21

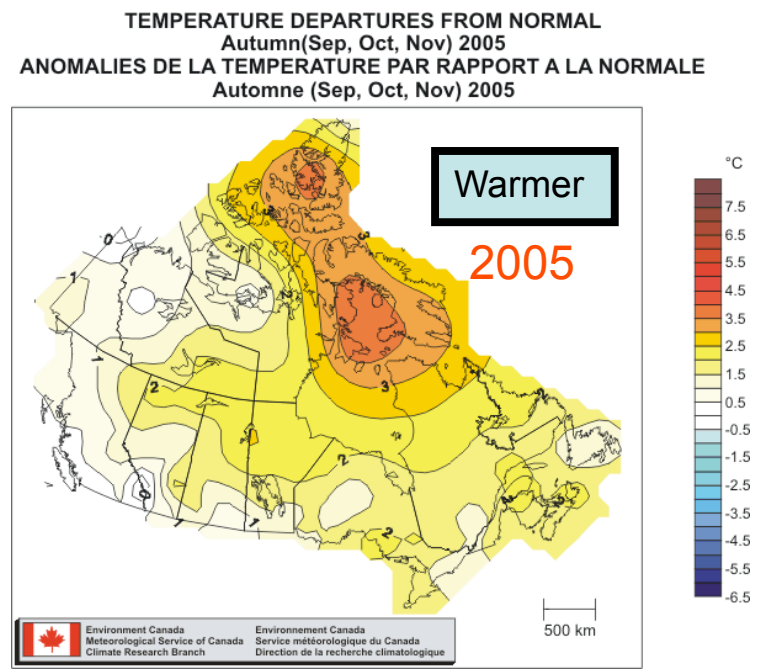
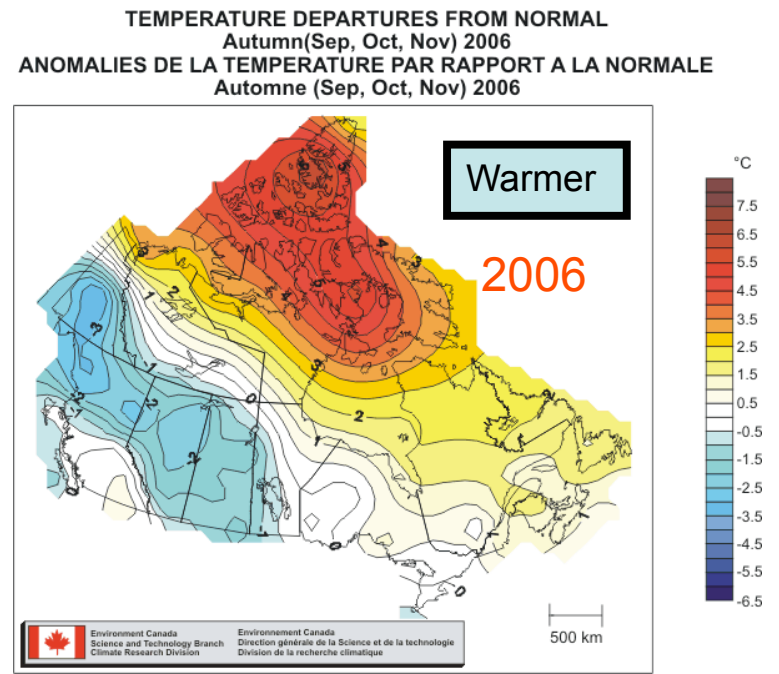
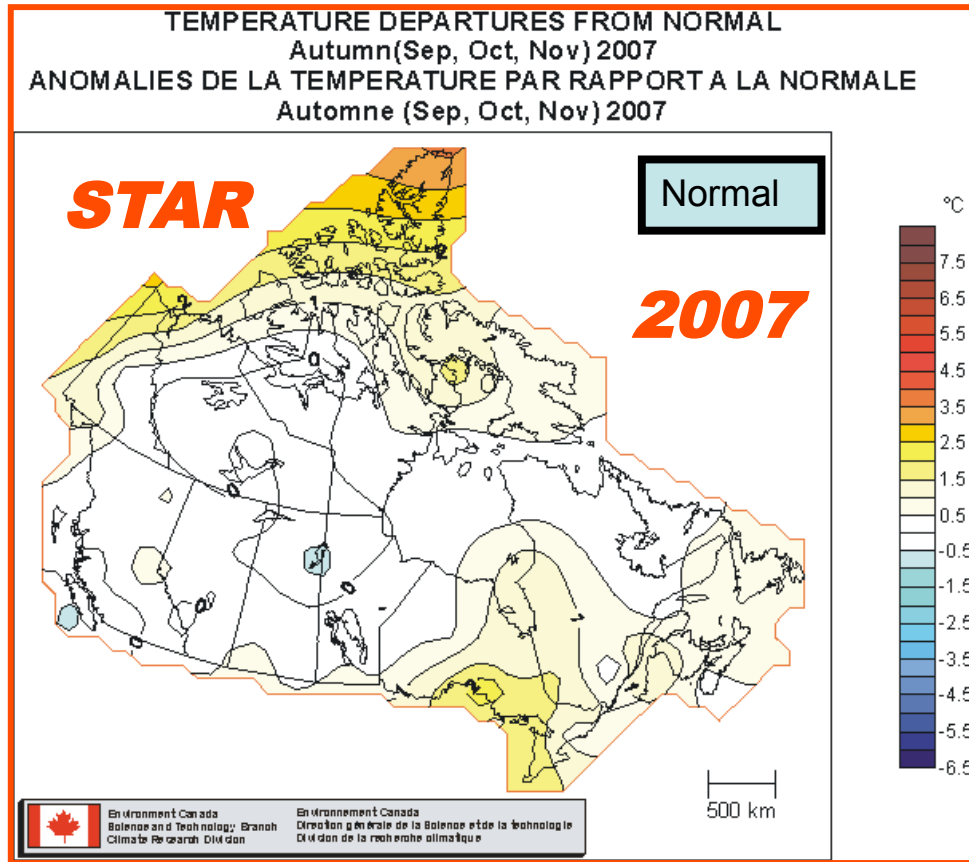


Normals 1971-2000	Rainfall <i>mm</i>	Snowfall <i>cm</i>	Snow Depth month end <i>cm</i>
September	41.5	13.7	1
October	4.5	34.9	10
November	0.5	32.4	21

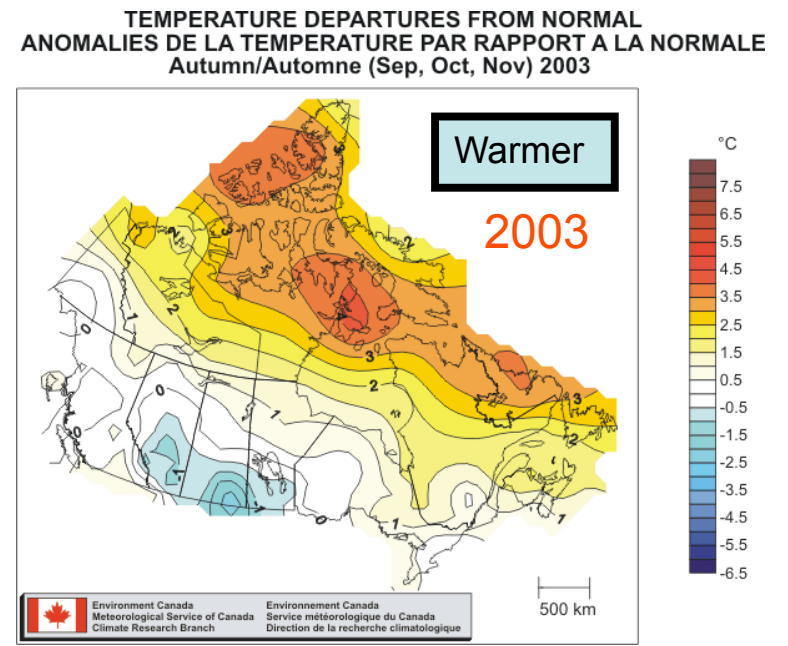
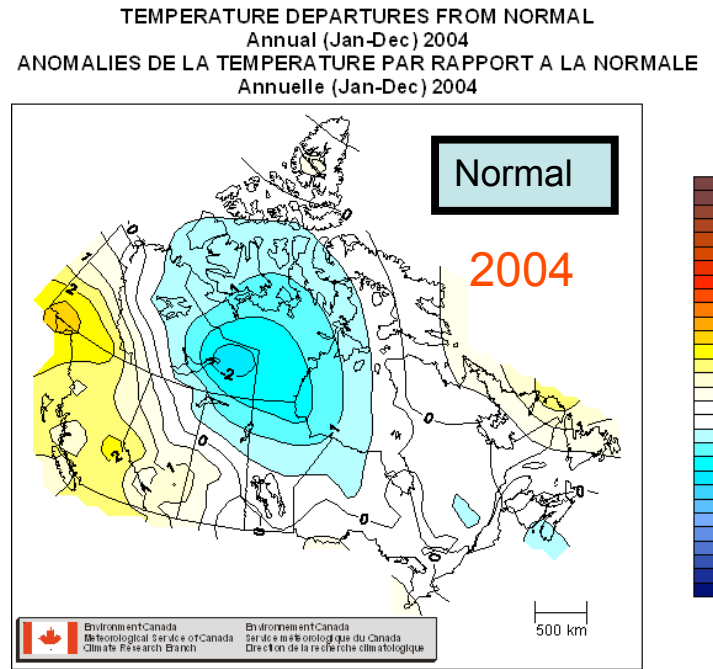
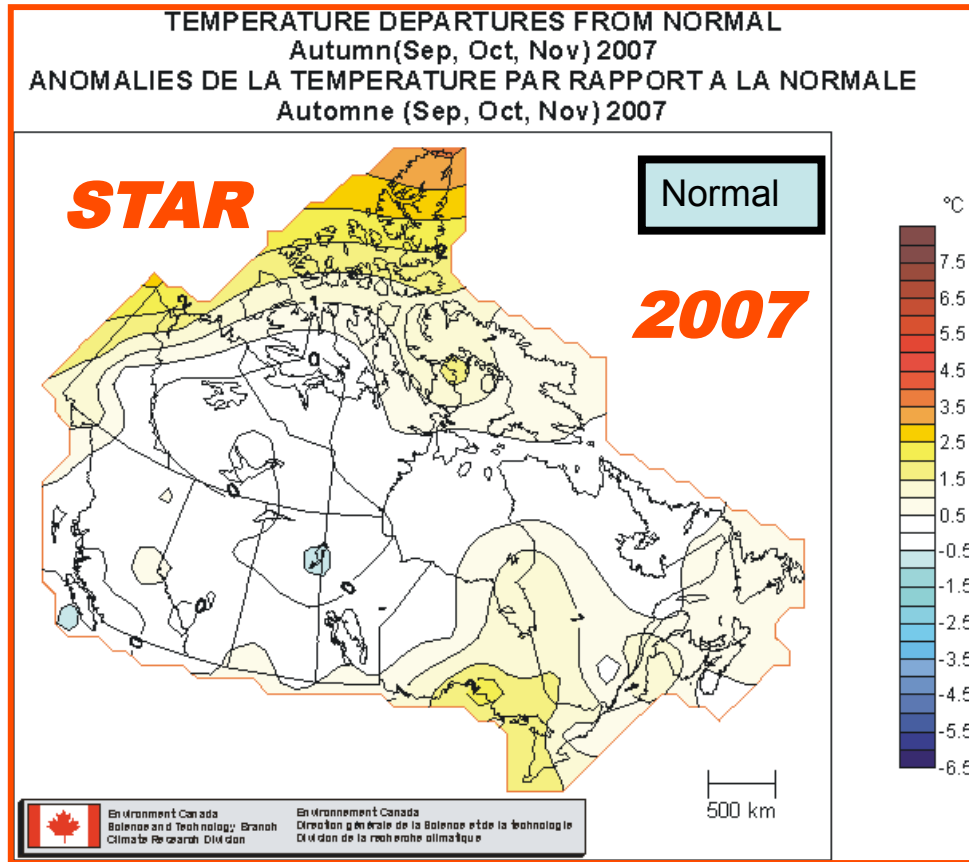
Temperature Departures from Normal for September, October, November

Normals 1971-2000	High	Low	Mean
September	4.7	-0.4	2.2
October	-2	-7.7	-4.9
November	-8.9	-16.7	-12.8



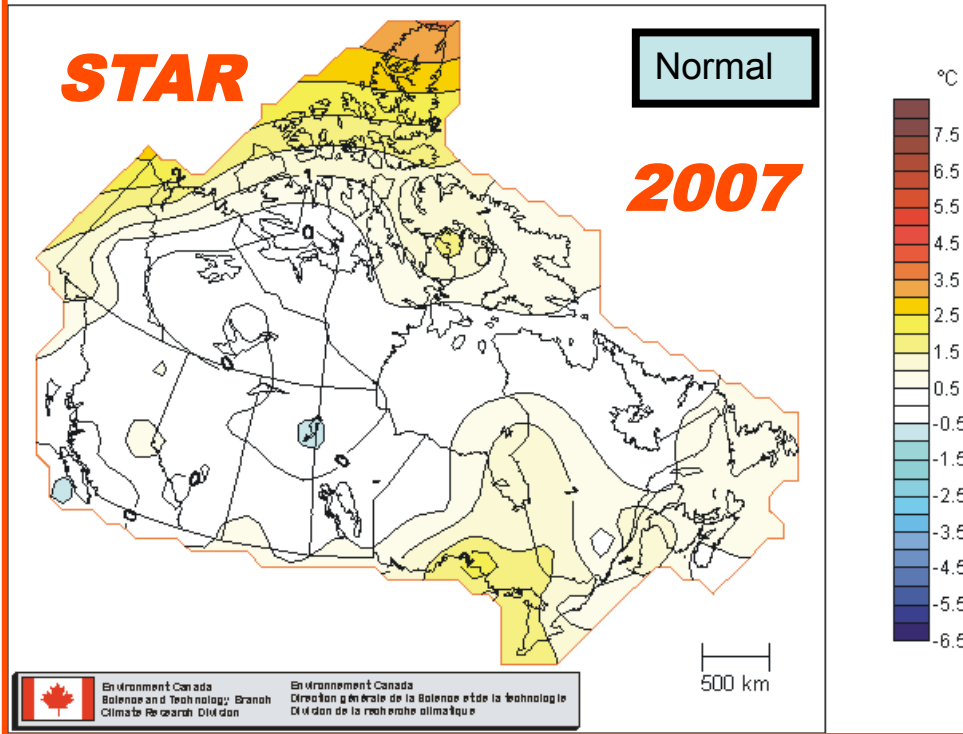


Normals 1971-2000	High	Low	Mean
September	4.7	-0.4	2.2
October	-2	-7.7	-4.9
November	-8.9	-16.7	-12.8

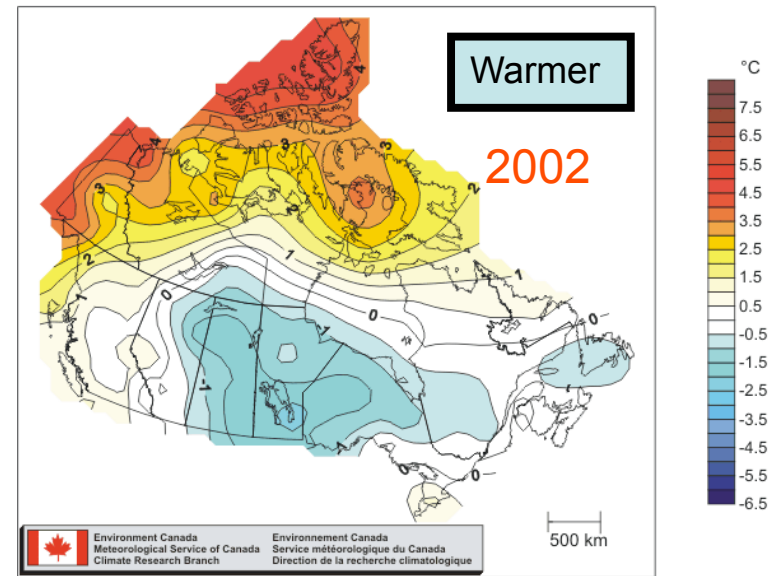


Normals 1971-2000	High	Low	Mean
September	4.7	-0.4	2.2
October	-2	-7.7	-4.9
November	-8.9	-16.7	-12.8

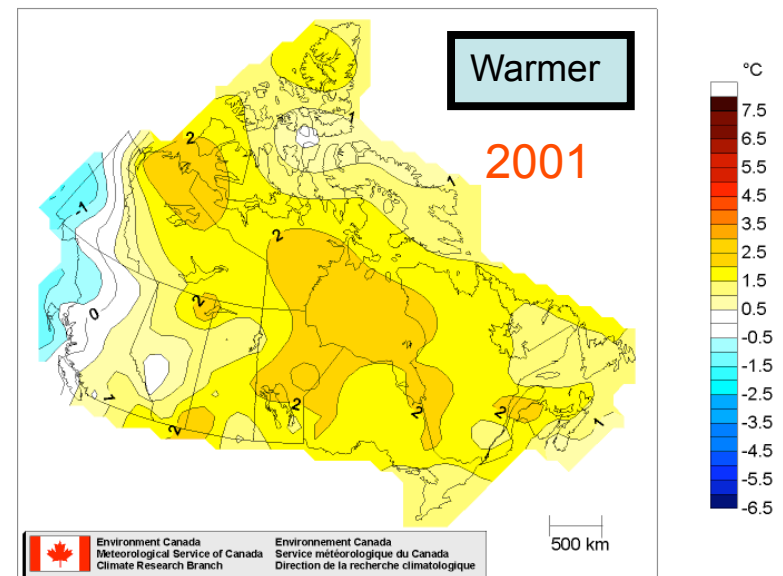
TEMPERATURE DEPARTURES FROM NORMAL
Autumn(Sep, Oct, Nov) 2007
ANOMALIES DE LA TEMPERATURE PAR RAPPORT A LA NORMALE
Automne (Sep, Oct, Nov) 2007



TEMPERATURE DEPARTURES FROM NORMAL
ANOMALIES DE LA TEMPERATURE PAR RAPPORT A LA NORMALE
Autumn/Automne (Sep,Oct,Nov) 2002

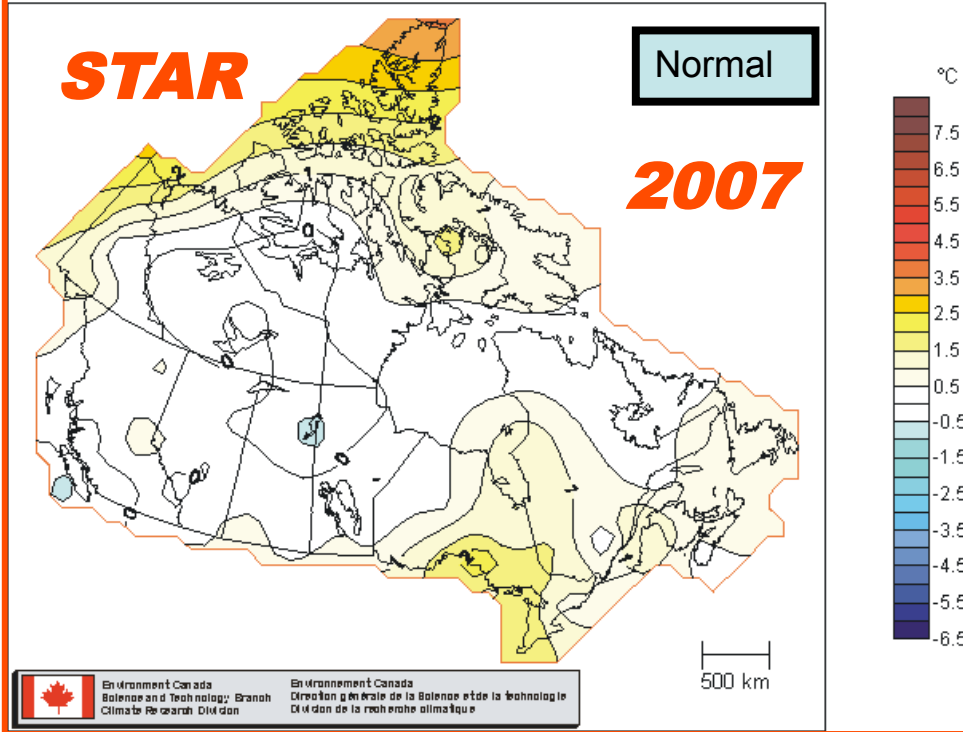


TEMPERATURE DEPARTURES FROM NORMAL
ANOMALIES DE LA TEMPERATURE PAR RAPPORT A LA NORMALE
Autumn/Automne (Sep,Oct,Nov) 2001

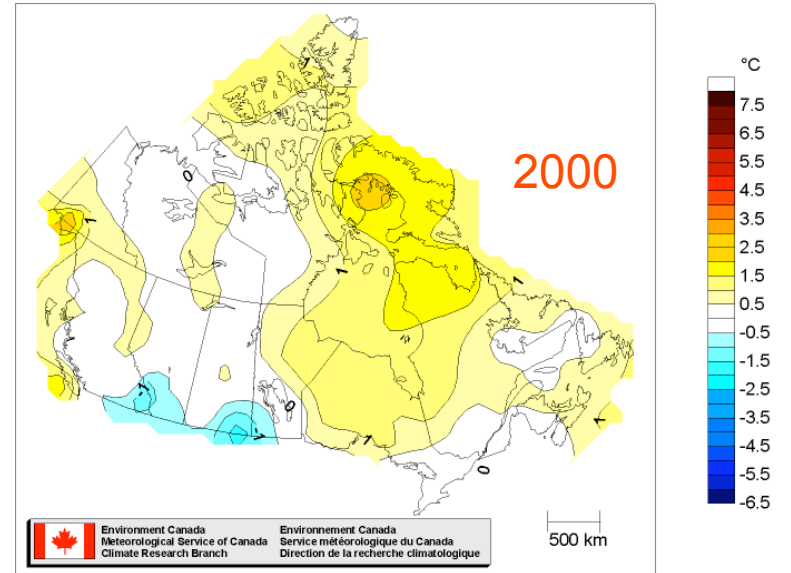


Normals 1971-2000	High	Low	Mean
September	4.7	-0.4	2.2
October	-2	-7.7	-4.9
November	-8.9	-16.7	-12.8

TEMPERATURE DEPARTURES FROM NORMAL
 Autumn(Sep, Oct, Nov) 2007
 ANOMALIES DE LA TEMPERATURE PAR RAPPORT A LA NORMALE
 Automne (Sep, Oct, Nov) 2007



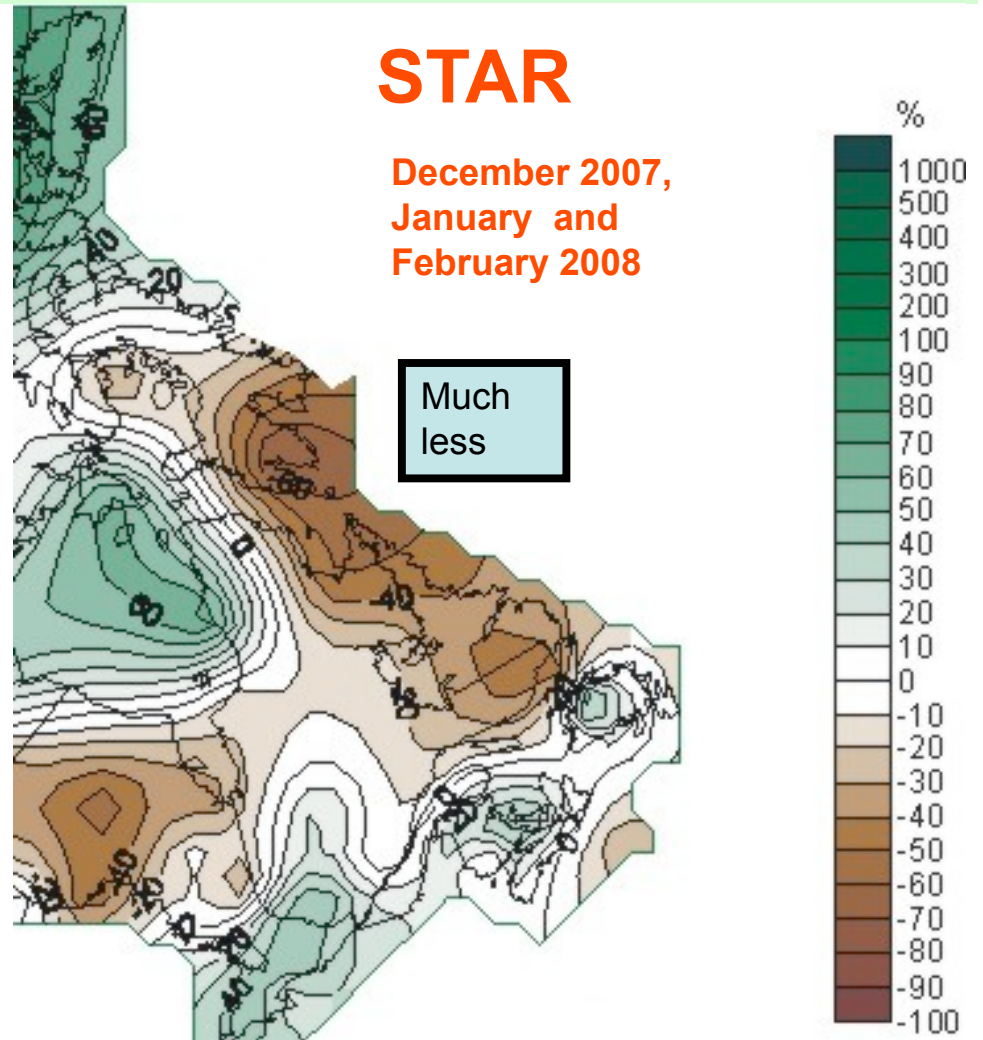
TEMPERATURE DEPARTURES FROM NORMAL
 ANOMALIES DE LA TEMPERATURE PAR RAPPORT A LA NORMALE
 Autumn/Automne (Sep,Oct,Nov) 2000



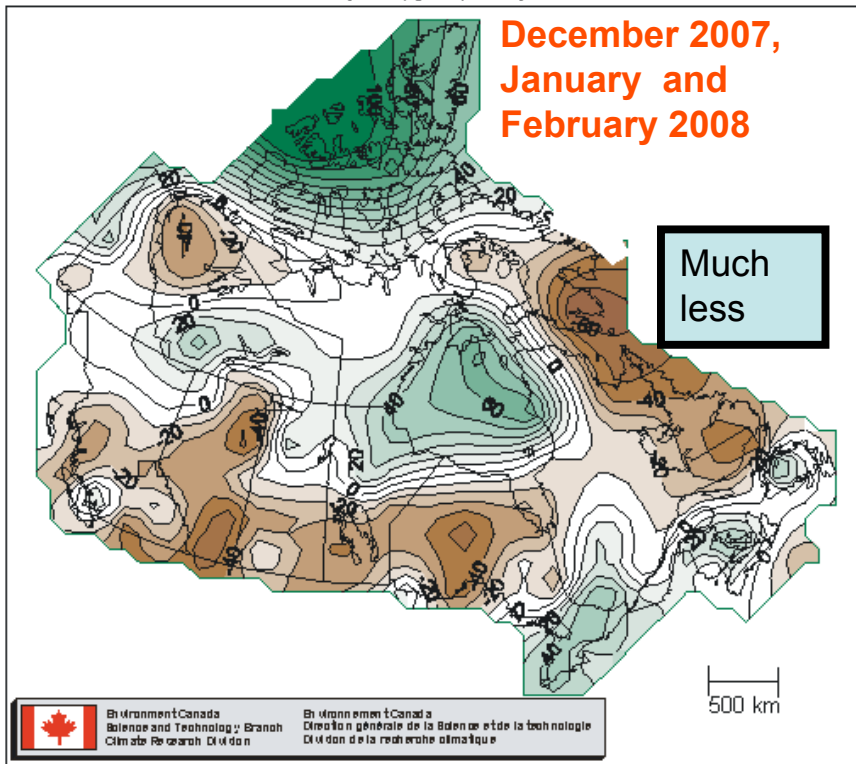
Normals 1971-2000	High	Low	Mean
September	4.7	-0.4	2.2
October	-2	-7.7	-4.9
November	-8.9	-16.7	-12.8

Precipitation Departures from Normal for December, January, February

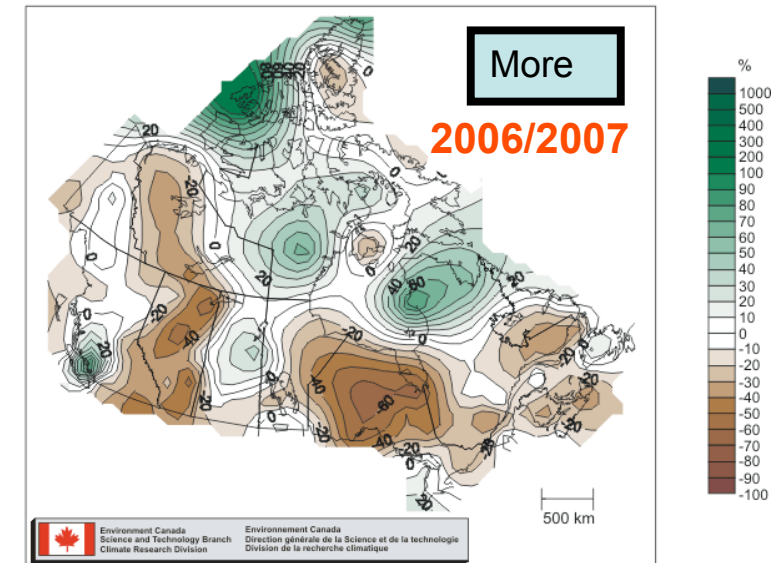
Normals 1971-2000	Rainfall <i>mm</i>	Snowfall <i>cm</i>	Snow Depth month end <i>cm</i>
December	0	21.7	20
January	0.1	22.8	22
February	0	16.8	23



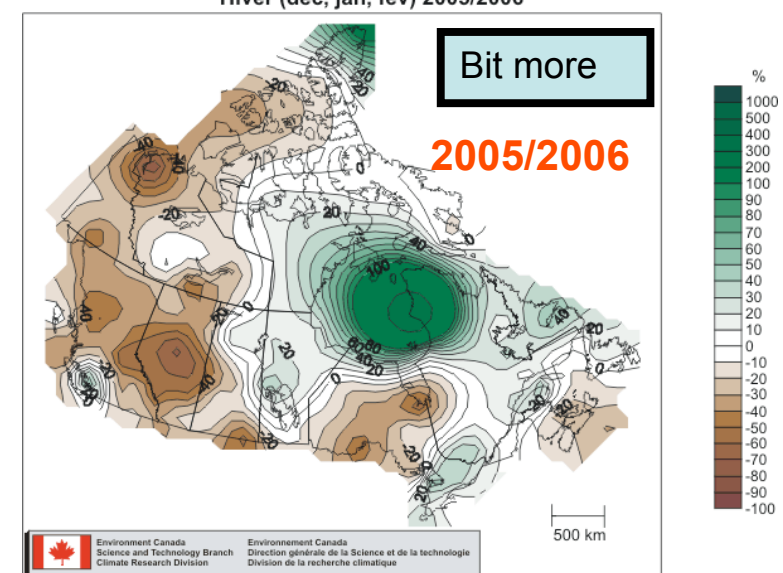
PRECIPITATION DEPARTURES FROM NORMAL
 Winter (Dec, Jan, Feb) 2007/2008
 ANOMALIES DES PRECIPITATIONS PAR RAPPORT A LA NORMALE
 Hiver (dec, jan, fev) 2007/2008



PRECIPITATION DEPARTURES FROM NORMAL
 Winter (Dec, Jan, Feb) 2006/2007
 ANOMALIES DES PRECIPITATIONS PAR RAPPORT A LA NORMALE
 Hiver (dec, jan, fev) 2006/2007

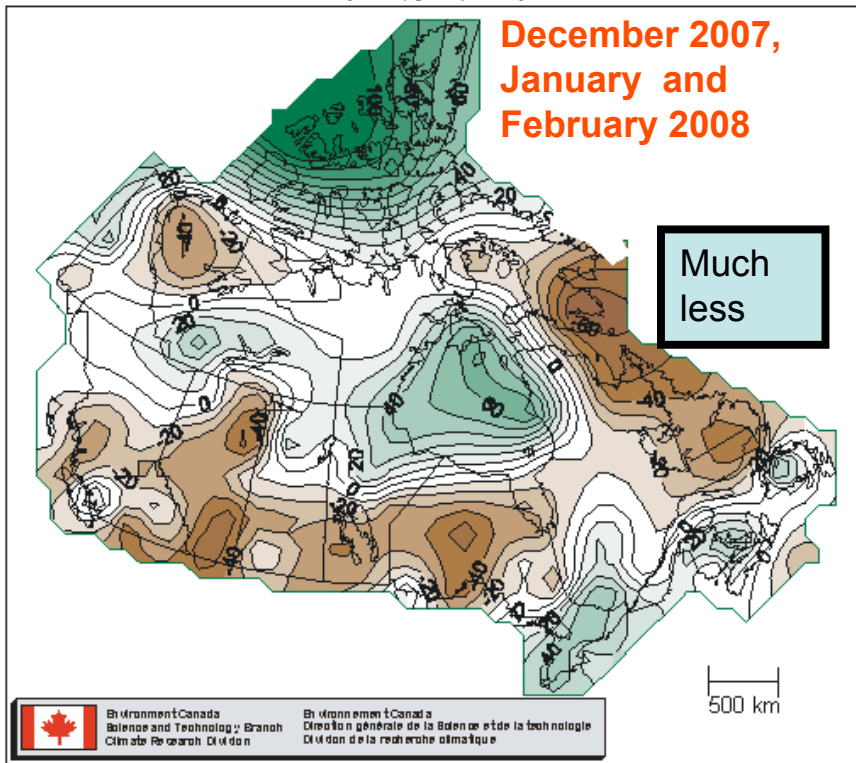


PRECIPITATION DEPARTURES FROM NORMAL
 Winter (Dec, Jan, Feb) 2005/2006
 ANOMALIES DES PRECIPITATIONS PAR RAPPORT A LA NORMALE
 Hiver (dec, jan, fev) 2005/2006

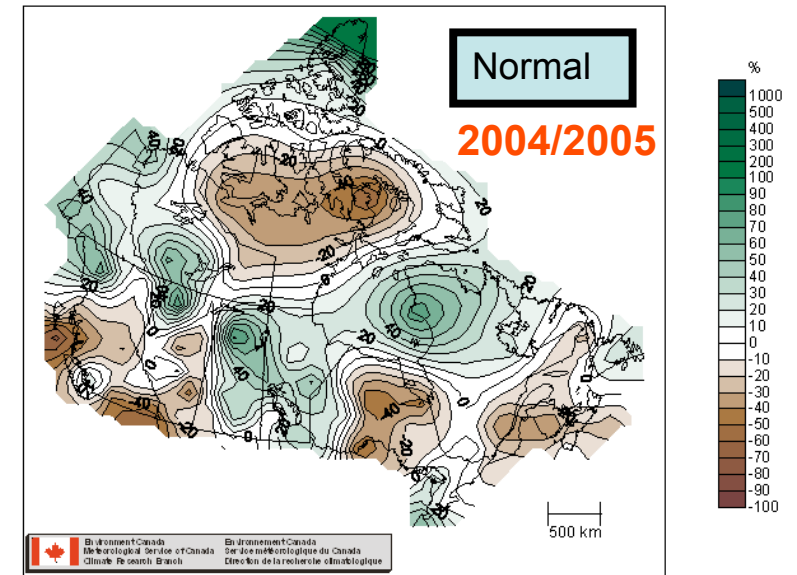


Normals 1971-2000	Rainfall mm	Snowfall cm	Snow Depth month end cm
December	0	21.7	20
January	0.1	22.8	22
February	0	16.8	23

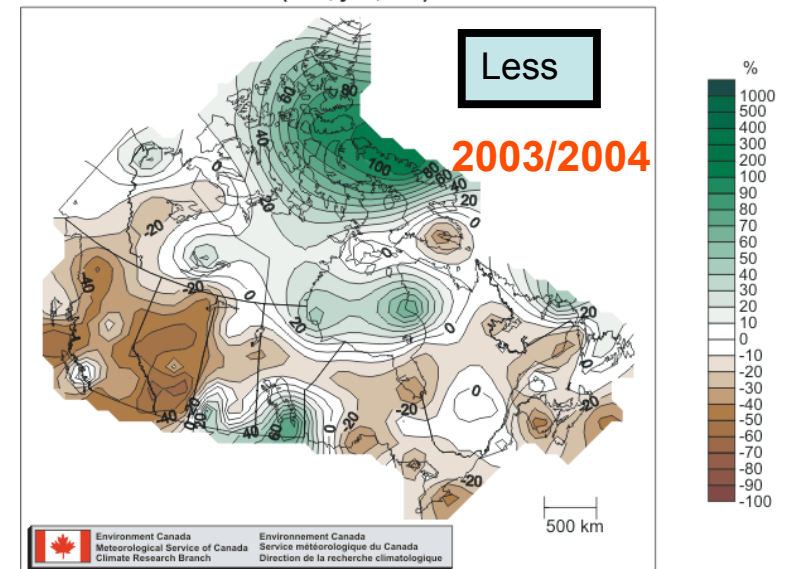
PRECIPITATION DEPARTURES FROM NORMAL
 Winter (Dec, Jan, Feb) 2007/2008
 ANOMALIES DES PRECIPITATIONS PAR RAPPORT A LA NORMALE
 Hiver (dec, jan, fev) 2007/2008



PRECIPITATION DEPARTURES FROM NORMAL
 Winter (Dec, Jan, Feb) 2004/2005
 ANOMALIES DES PRECIPITATIONS PAR RAPPORT A LA NORMALE
 Hiver (dec, jan, fev) 2004/2005

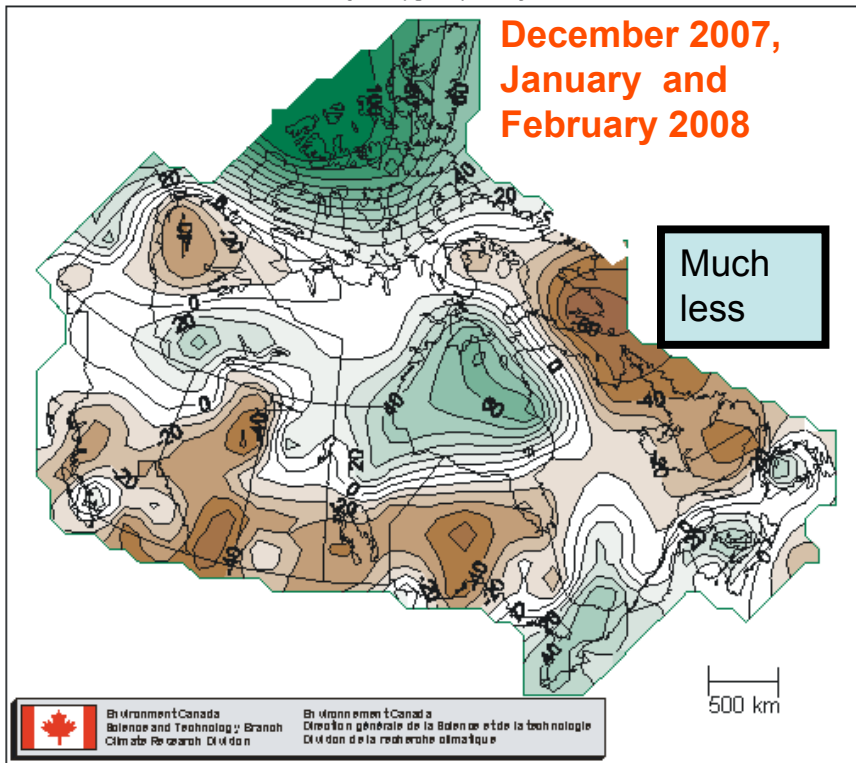


PRECIPITATION DEPARTURES FROM NORMAL
 Winter (Dec, Jan, Feb) 2003/2004
 ANOMALIES DES PRECIPITATIONS PAR RAPPORT A LA NORMALE
 Hiver (dec, jan, fev) 2003/2004

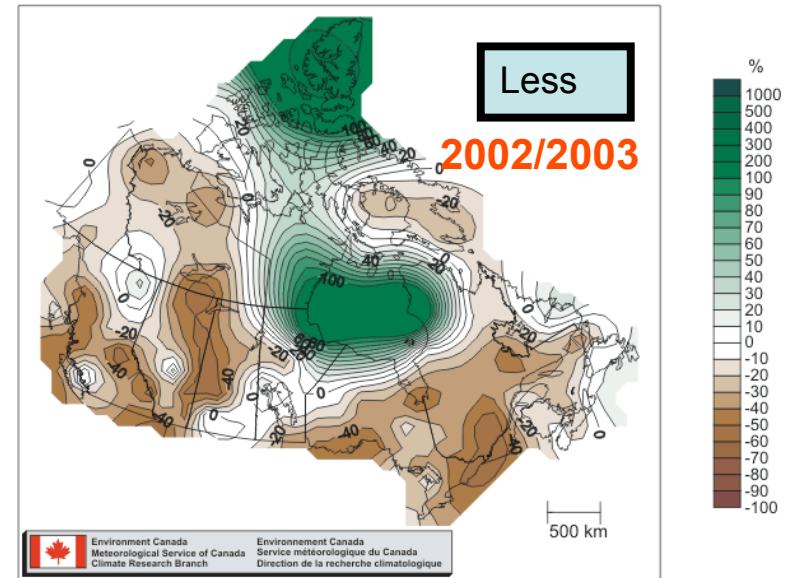


Normals 1971-2000	Rainfall mm	Snowfall cm	Snow Depth month end cm
December	0	21.7	20
January	0.1	22.8	22
February	0	16.8	23

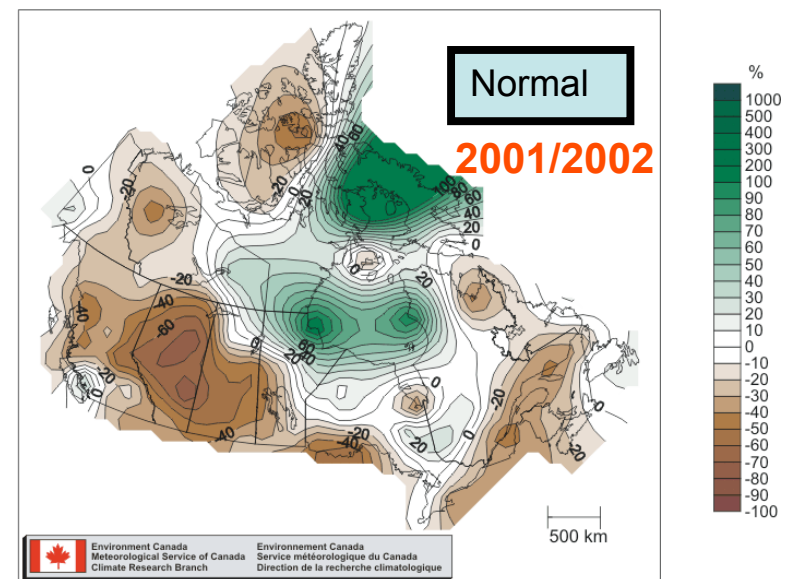
PRECIPITATION DEPARTURES FROM NORMAL
 Winter (Dec, Jan, Feb) 2007/2008
 ANOMALIES DES PRECIPITATIONS PAR RAPPORT A LA NORMALE
 Hiver (dec, jan, fev) 2007/2008



PRECIPITATION DEPARTURES FROM NORMAL
 ANOMALIES DES PRECIPITATIONS PAR RAPPORT A LA NORMALE
 Winter/Hiver (Dec, Jan, Feb) 2002/2003

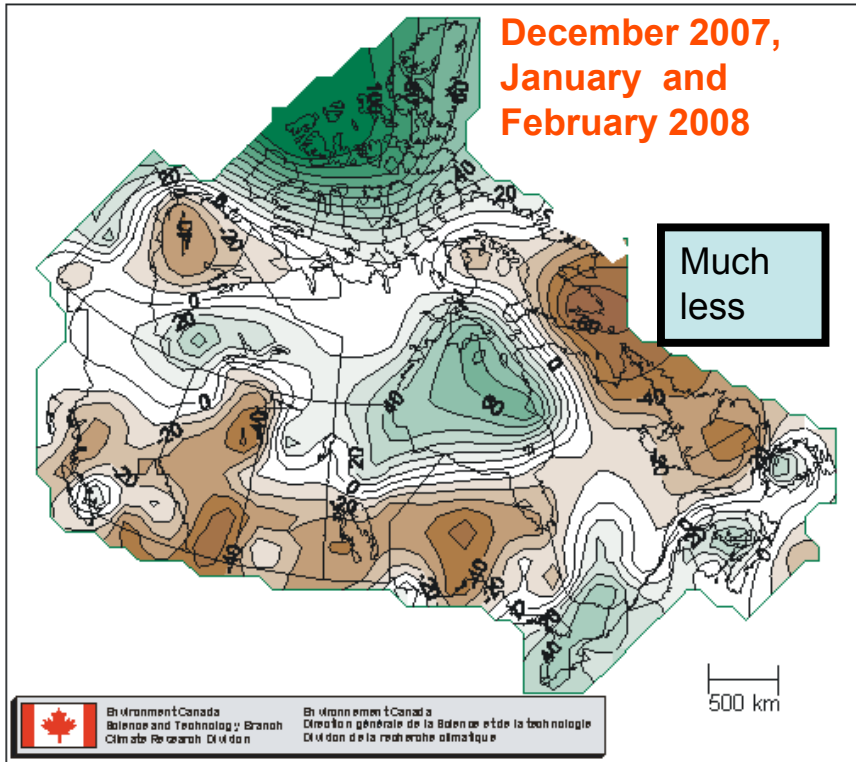


PRECIPITATION DEPARTURES FROM NORMAL
 ANOMALIES DES PRECIPITATIONS PAR RAPPORT A LA NORMALE
 Winter/Hiver (Dec, Jan, Feb) 2001/2002

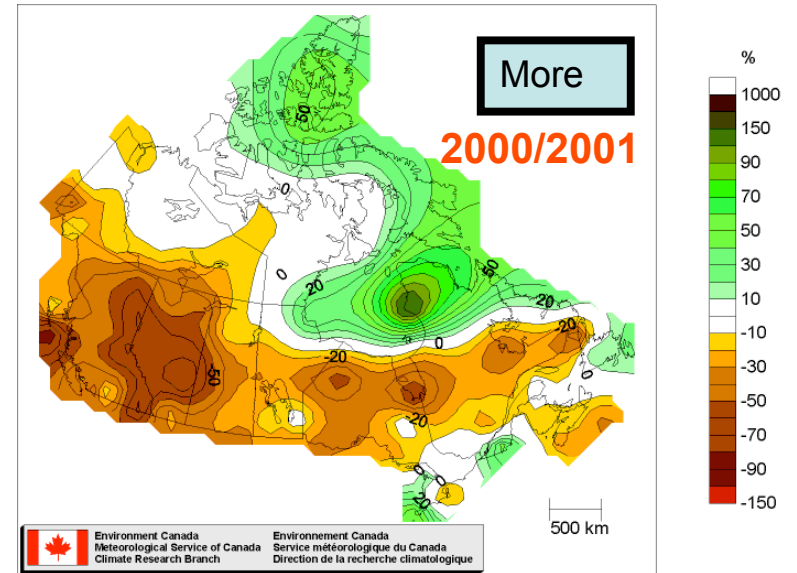


Normals 1971-2000	Rainfall mm	Snowfall cm	Snow Depth month end cm
December	0	21.7	20
January	0.1	22.8	22
February	0	16.8	23

PRECIPITATION DEPARTURES FROM NORMAL
 Winter (Dec, Jan, Feb) 2007/2008
 ANOMALIES DES PRECIPITATIONS PAR RAPPORT A LA NORMALE
 Hiver (dec, jan, fev) 2007/2008



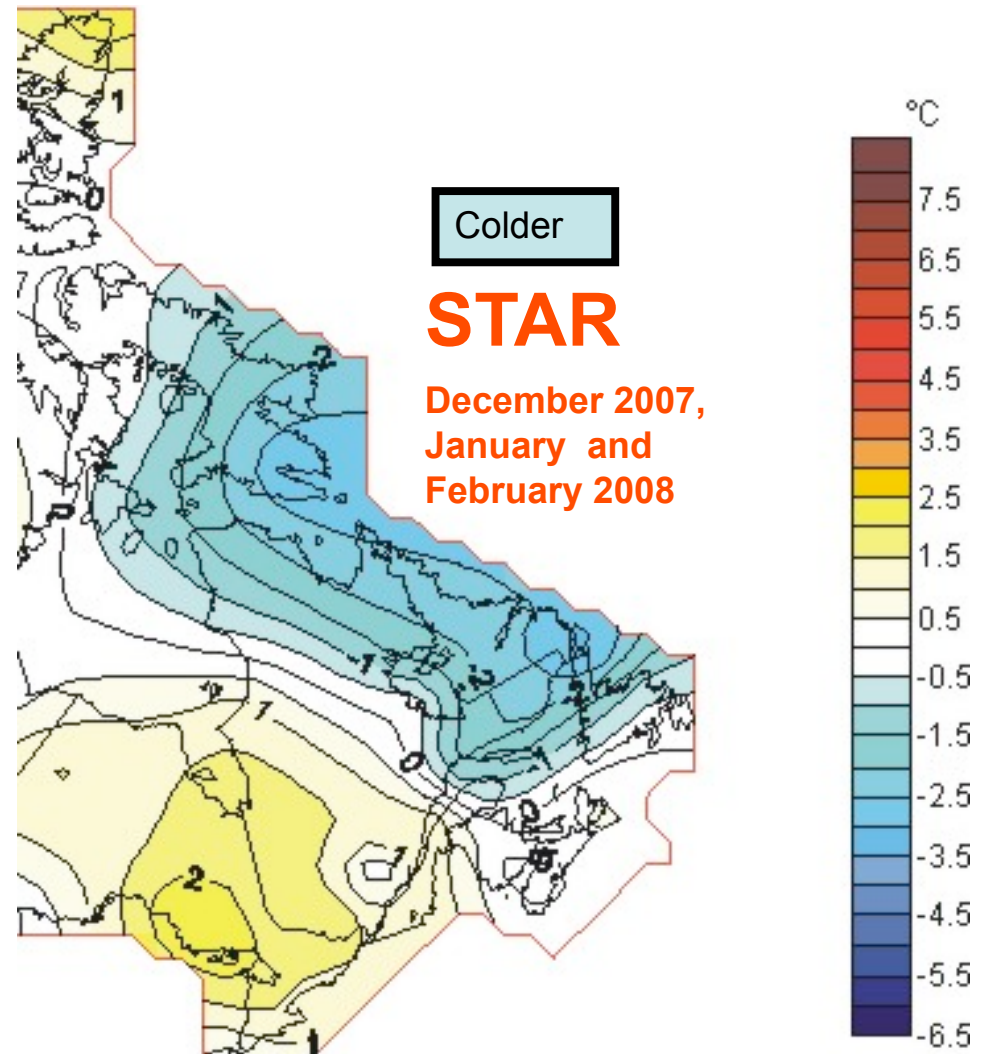
PRECIPITATION DEPARTURES FROM NORMAL
 ANOMALIES DES PRECIPITATIONS PAR RAPPORT A LA NORMALE
 Winter/Hiver (Dec,Jan,Febr) 2000/2001



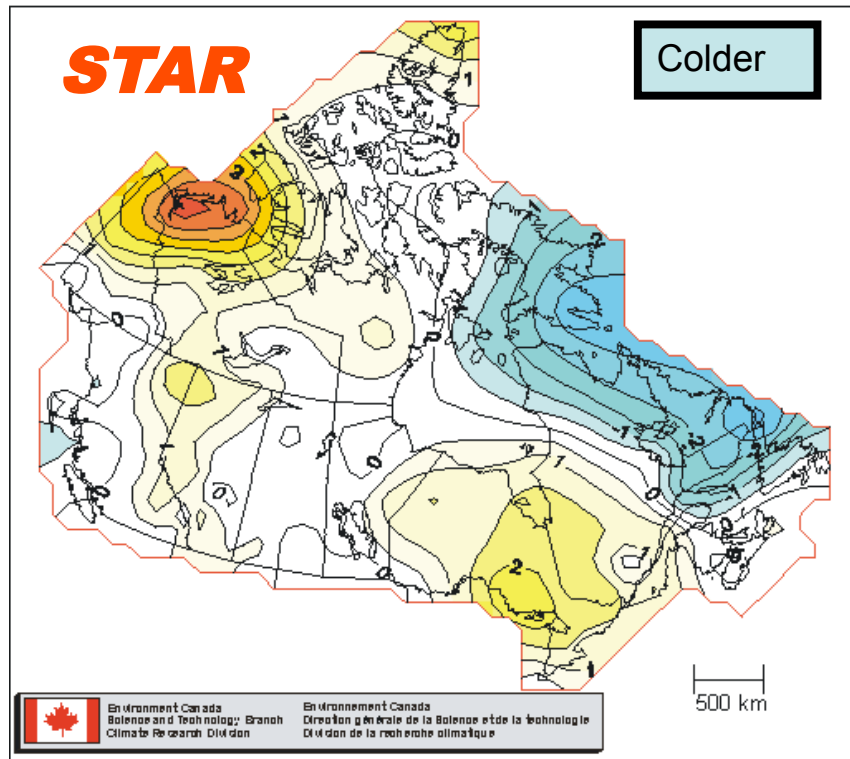
Normals 1971-2000	Rainfall <i>mm</i>	Snowfall <i>cm</i>	Snow Depth month end <i>cm</i>
December	0	21.7	20
January	0.1	22.8	22
February	0	16.8	23

Temperature Departures from Normal for December, January, February

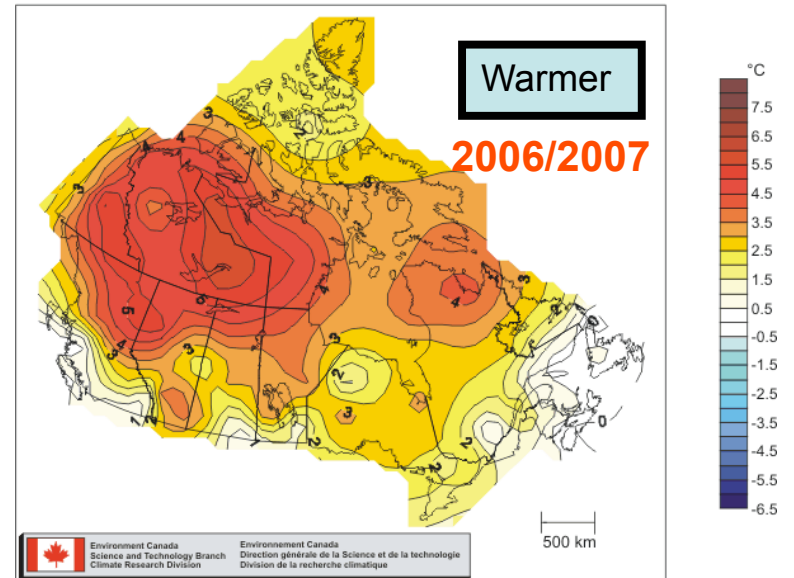
Normals 1971-2000	High	Low	Mean
December	-18.5	-26.9	-22.7
January	-22.5	-30.6	-26.6
February	-23.8	-32.2	-28



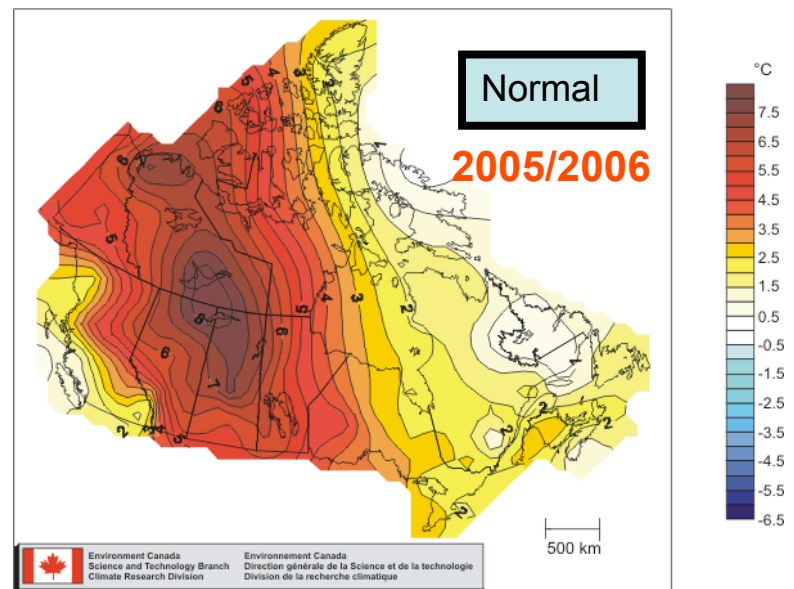
TEMPERATURE DEPARTURES FROM NORMAL
 Winter (Dec, Jan, Feb) 2007/2008
 ANOMALIES DE LA TEMPERATURE PAR RAPPORT A LA NORMALE
 Hiver (dec, jan, fev) 2007/2008



TEMPERATURE DEPARTURES FROM NORMAL
 Winter (Dec, Jan, Feb) 2006/2007
 ANOMALIES DE LA TEMPERATURE PAR RAPPORT A LA NORMALE
 Hiver (dec, jan, fev) 2006/2007

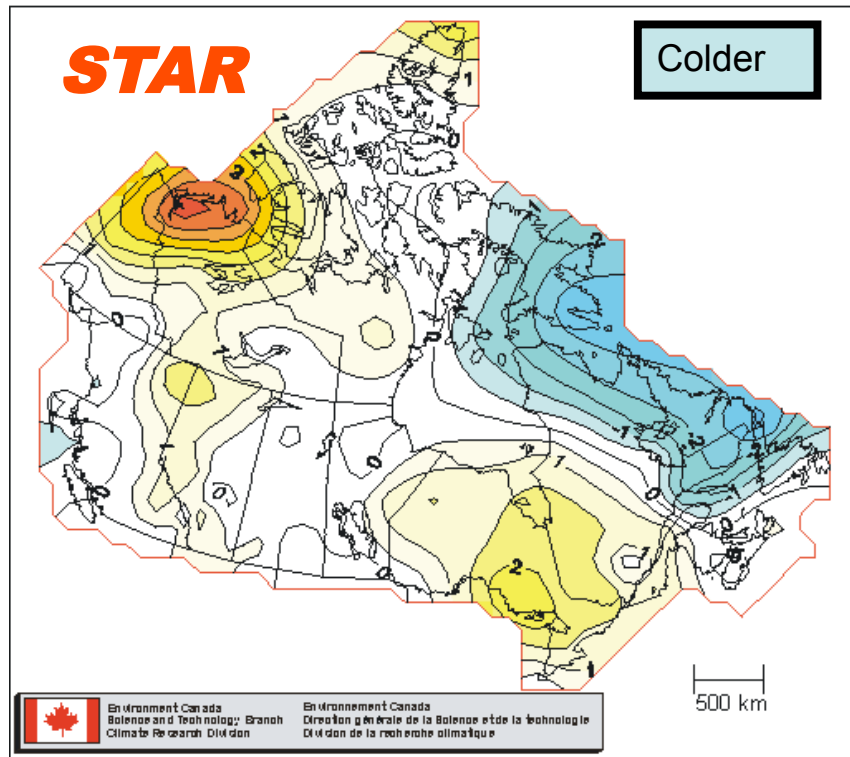


TEMPERATURE DEPARTURES FROM NORMAL
 Winter (Dec, Jan, Feb) 2005/2006
 ANOMALIES DE LA TEMPERATURE PAR RAPPORT A LA NORMALE
 Hiver (dec, jan, fev) 2005/2006

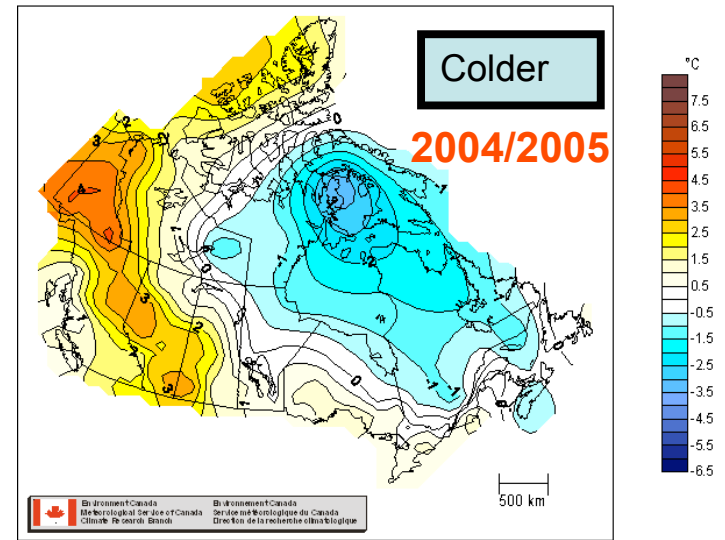


Normals 1971-2000	High	Low	Mean
December	-18.5	-26.9	-22.7
January	-22.5	-30.6	-26.6
February	-23.8	-32.2	-28

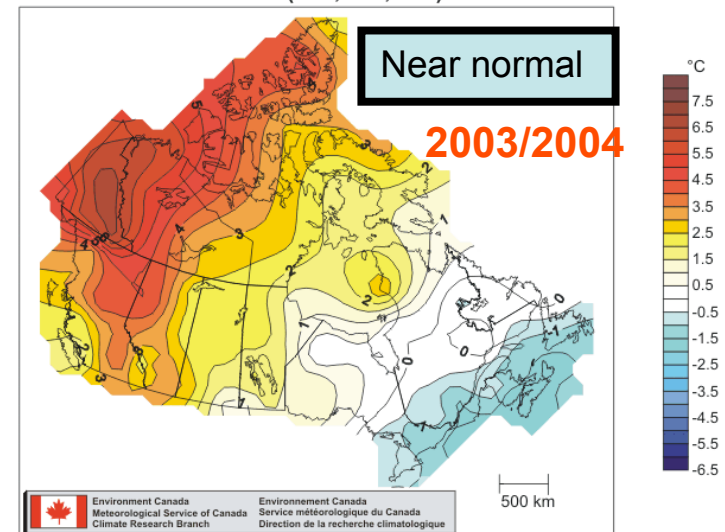
TEMPERATURE DEPARTURES FROM NORMAL
 Winter (Dec, Jan, Feb) 2007/2008
 ANOMALIES DE LA TEMPERATURE PAR RAPPORT A LA NORMALE
 Hiver (dec, jan, fev) 2007/2008



TEMPERATURE DEPARTURES FROM NORMAL
 Winter (Dec, Jan, Feb) 2004/2005
 ANOMALIES DE LA TEMPERATURE PAR RAPPORT A LA NORMALE
 Hiver (dec, jan, fev) 2004/2005

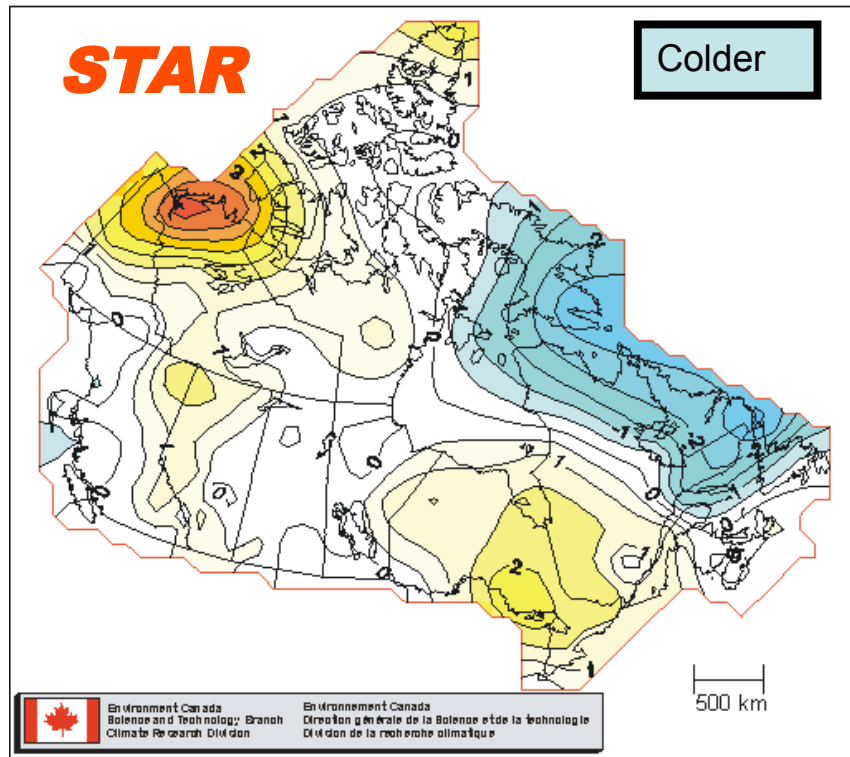


TEMPERATURE DEPARTURES FROM NORMAL
 ANOMALIES DE LA TEMPERATURE PAR RAPPORT A LA NORMALE
 Winter/Hiver (Dec, Jan, Feb) 2002/2003

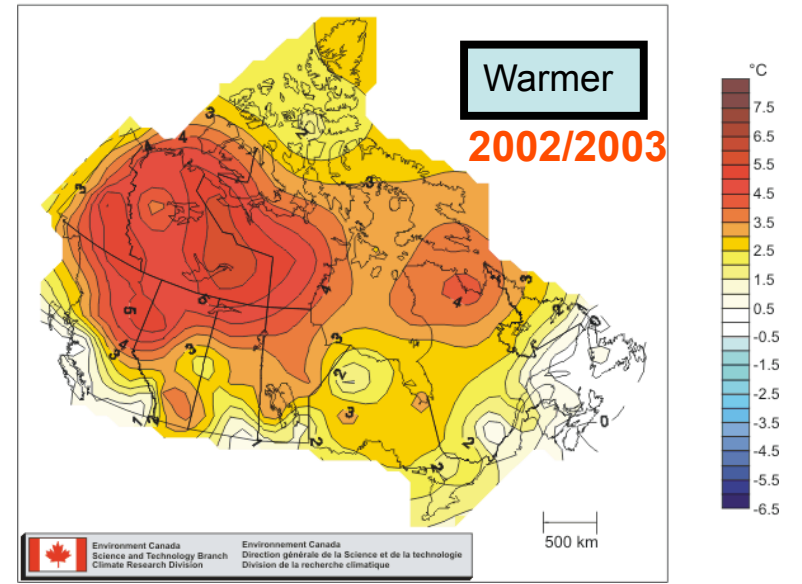


Normals 1971-2000	High	Low	Mean
December	-18.5	-26.9	-22.7
January	-22.5	-30.6	-26.6
February	-23.8	-32.2	-28

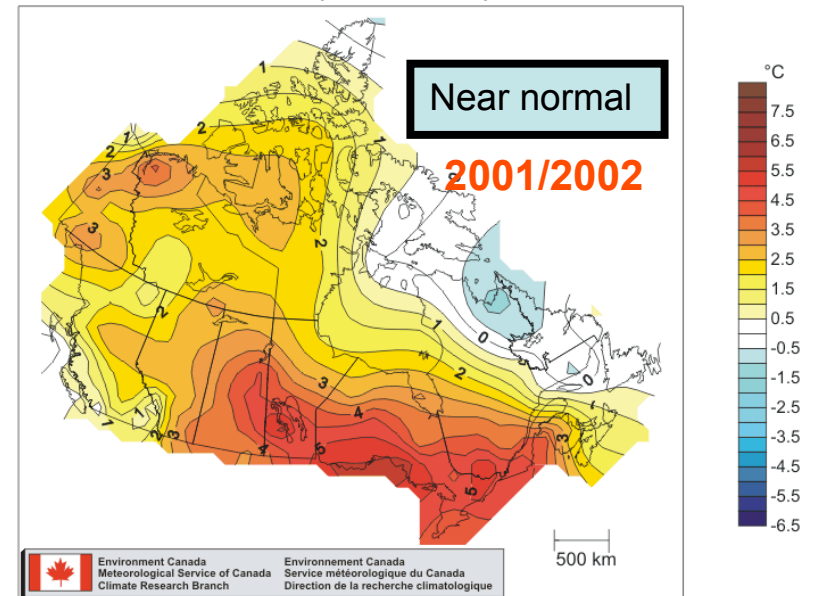
TEMPERATURE DEPARTURES FROM NORMAL
 Winter (Dec, Jan, Feb) 2007/2008
 ANOMALIES DE LA TEMPERATURE PAR RAPPORT A LA NORMALE
 Hiver (dec, jan, fev) 2007/2008



TEMPERATURE DEPARTURES FROM NORMAL
 Winter (Dec, Jan, Feb) 2006/2007
 ANOMALIES DE LA TEMPERATURE PAR RAPPORT A LA NORMALE
 Hiver (dec, jan, fev) 2006/2007

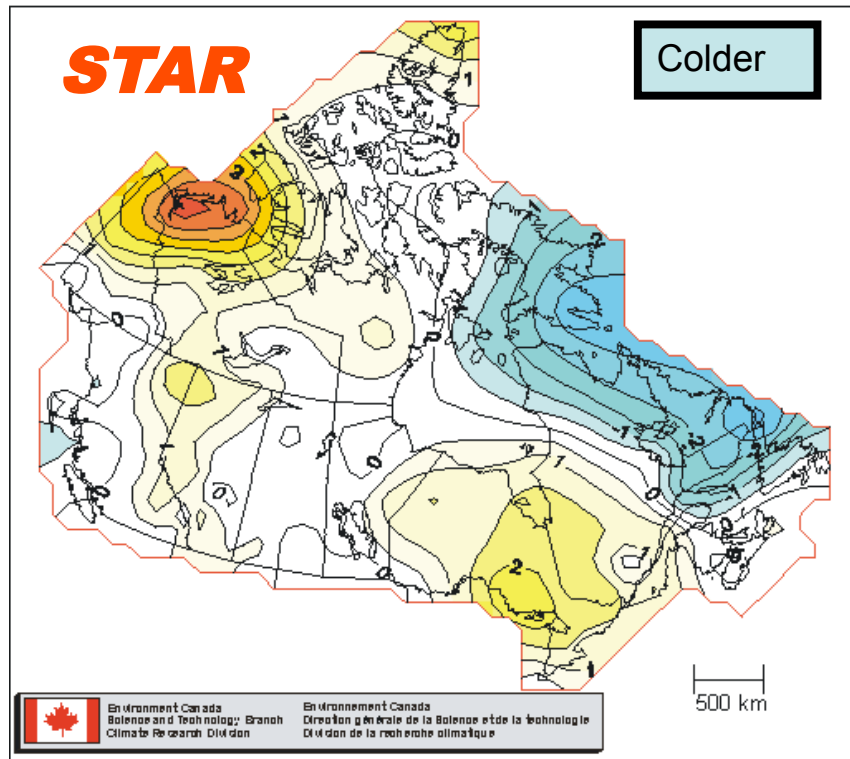


TEMPERATURE DEPARTURES FROM NORMAL
 ANOMALIES DE LA TEMPERATURE PAR RAPPORT A LA NORMALE
 Winter/Hiver (Dec, Jan, Feb) 2001/2002

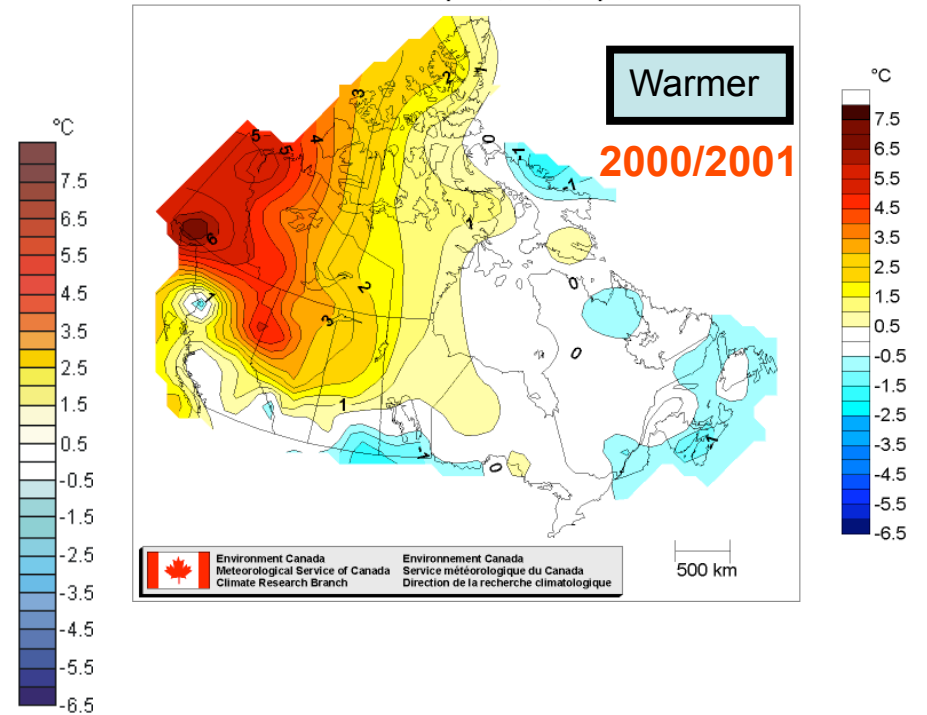


Normals 1971-2000	High	Low	Mean
December	-18.5	-26.9	-22.7
January	-22.5	-30.6	-26.6
February	-23.8	-32.2	-28

TEMPERATURE DEPARTURES FROM NORMAL
 Winter (Dec, Jan, Feb) 2007/2008
 ANOMALIES DE LA TEMPERATURE PAR RAPPORT A LA NORMALE
 Hiver (dec, jan, fev) 2007/2008



TEMPERATURE DEPARTURES FROM NORMAL
 ANOMALIES DE LA TEMPERATURE PAR RAPPORT A LA NORMALE
 Winter/Hiver (Dec,Jan,Febr) 2000/2001



Normals 1971-2000	High	Low	Mean
December	-18.5	-26.9	-22.7
January	-22.5	-30.6	-26.6
February	-23.8	-32.2	-28

To do..

...

.....

.....

.....