

Simulating Wind Channeling over Frobisher Bay with GEM-LAM 2.5 km

Daniel Deacu^{1,2}, Ayrton Zadra² and John Hanesiak¹

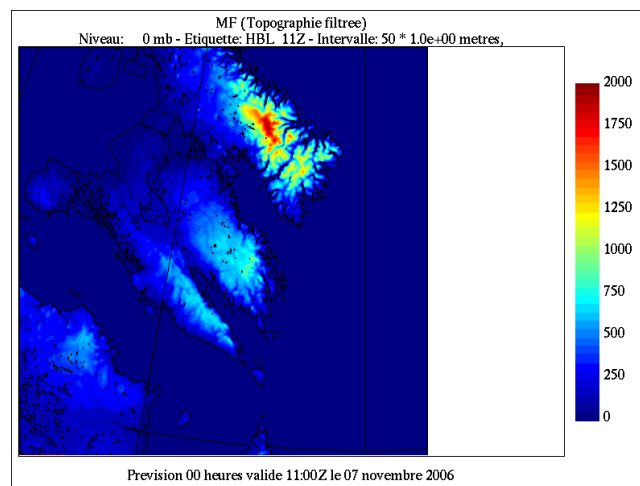
¹ University of Manitoba

² Recherche en Prévision Numérique, Environment Canada

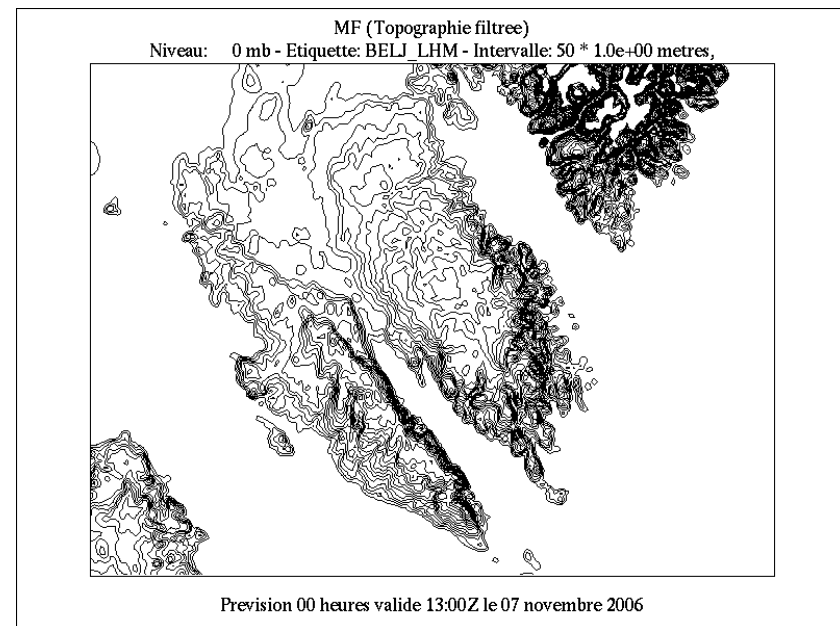
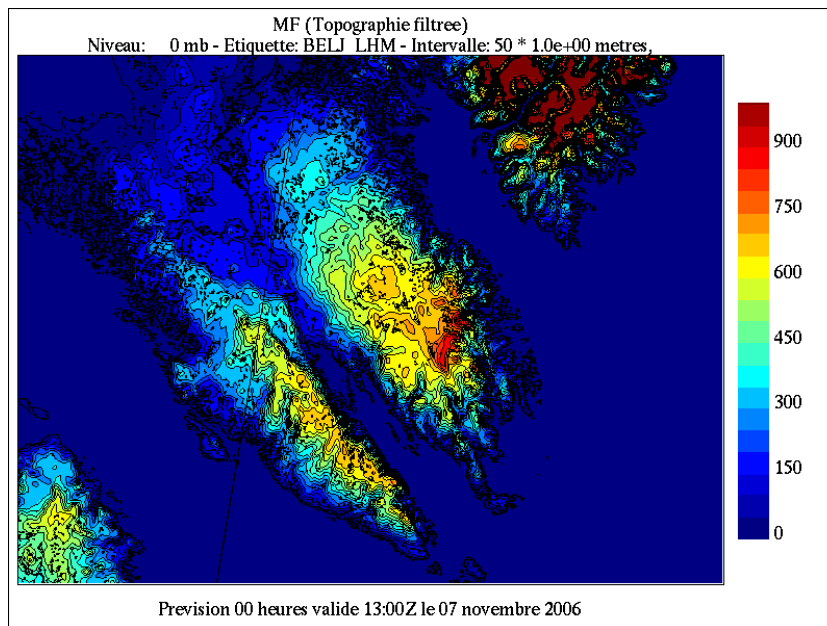
November 3, 2008

Introduction

- Case study: Wind storm of Nov. 7-8, 2006
- Model: GEM-LAM
 - horizontal resolution: 2.5 km
 - initial and boundary conditions: GEM-REG
 - model domain and topography

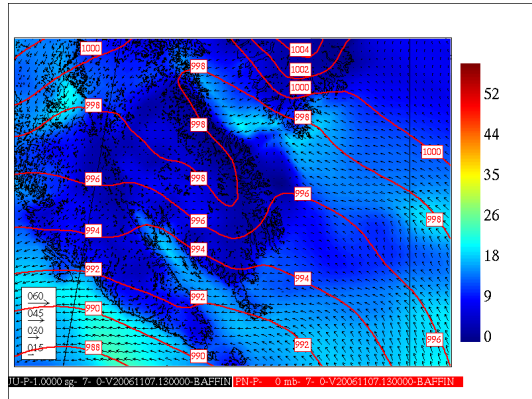


Topography of Southern Baffin Island in GEM-LAM 2.5 km

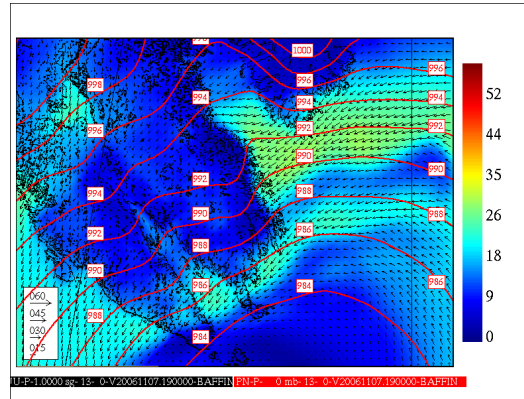


1:

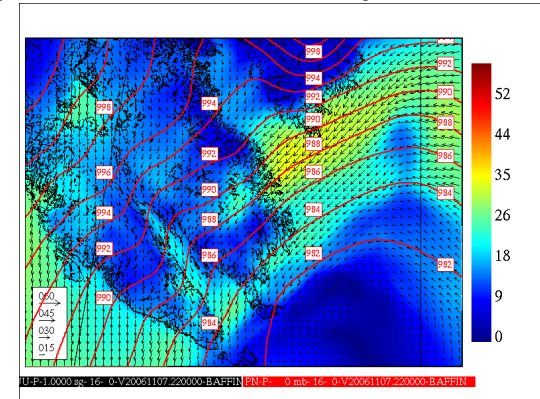
Sea Level Pressure and Surface Wind GEM-REG and GEM-LAM 2.5 (BELJ_LHM)



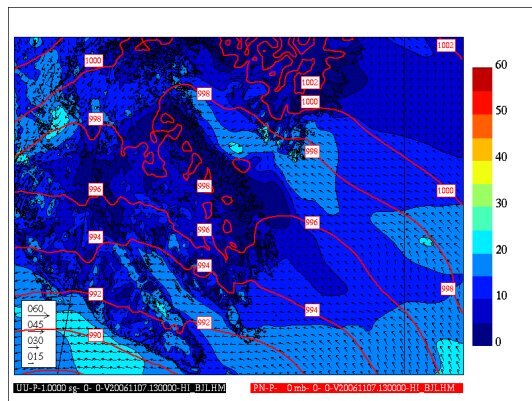
(a) GEM-REG – 13 Z



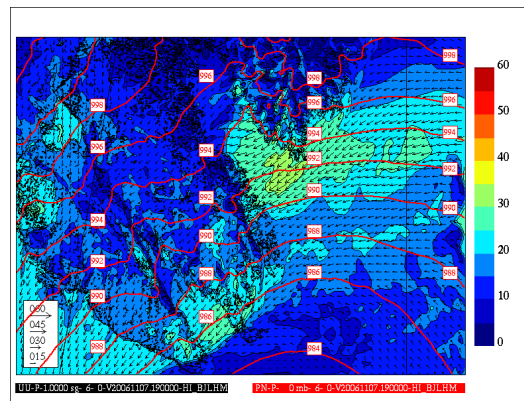
(b) GEM-REG – 19 Z



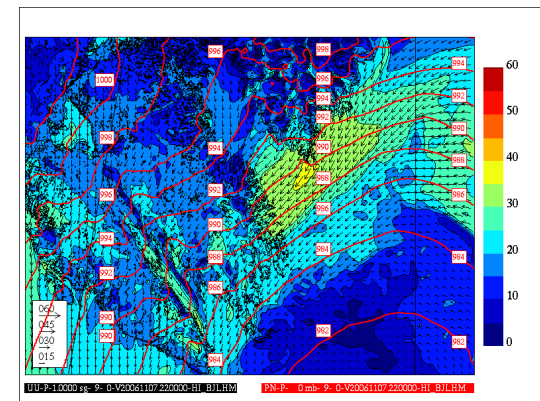
(c) GEM-REG – 22 Z



(d) GEM-LAM 2.5 – 13 Z



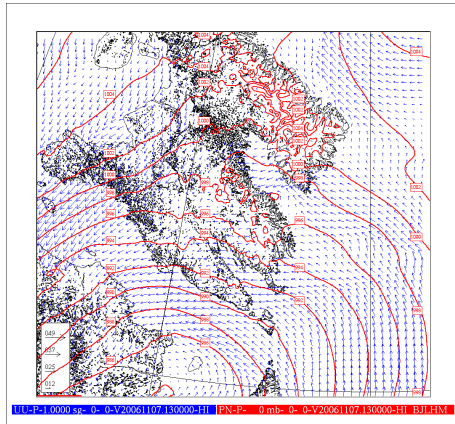
(e) GEM-LAM 2.5 – 19 Z



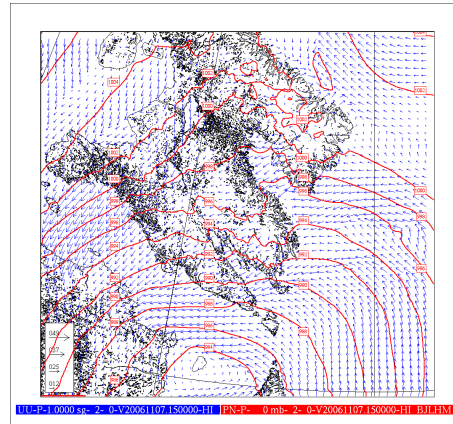
(f) GEM-LAM 2.5 – 22 Z

2:

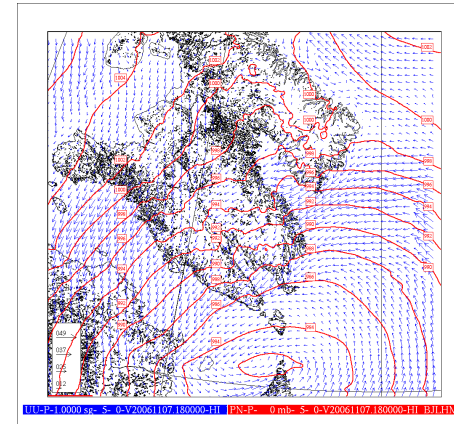
Sea Level Pressure and Surface Wind (BELJ_LHM)



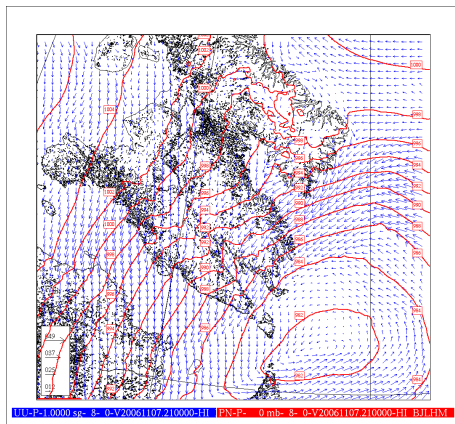
(a) 13 Z



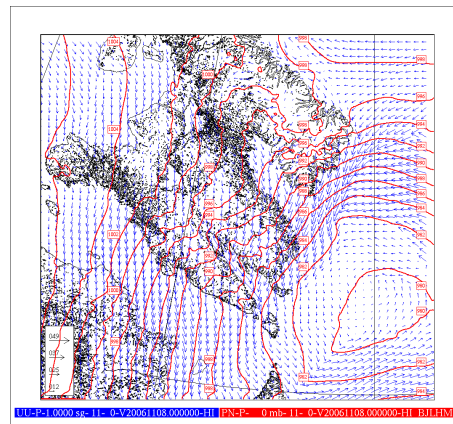
(b) 15 Z



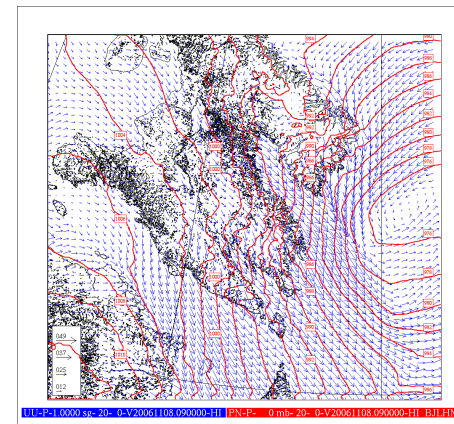
(c) 18 Z



(d) 21 Z



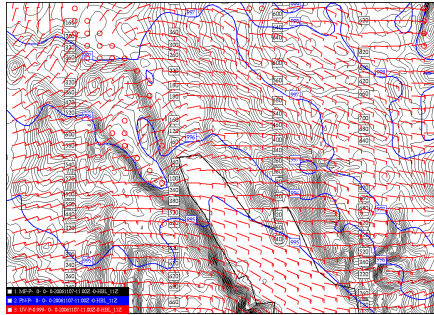
(e) 00 Z (+1d)



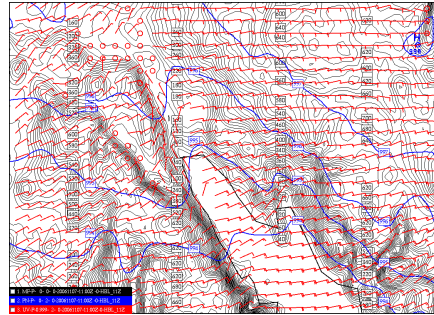
(f) 09 Z (+1d)

3:

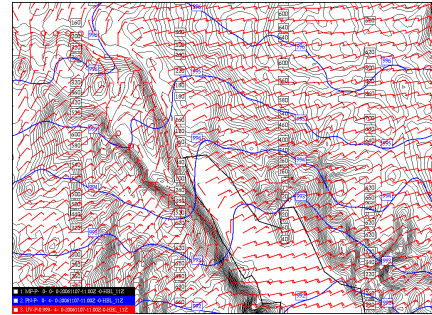
Sea Level Pressure and Surface Wind (HBL_11Z)



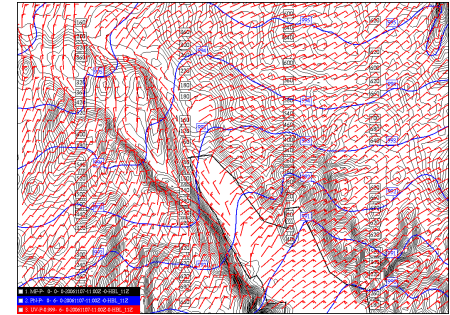
(a) 11 Z



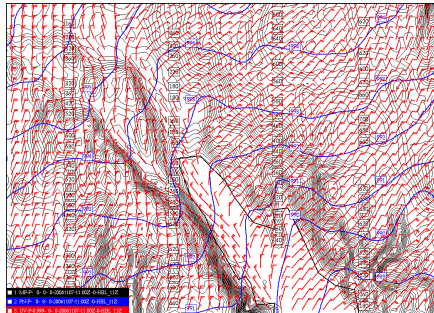
(b) 13 Z



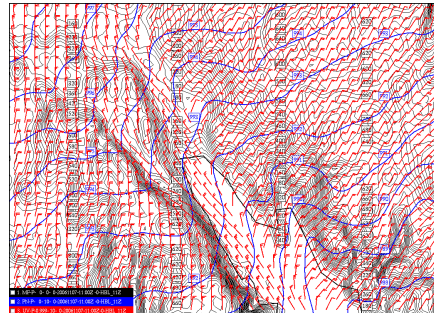
(c) 15 Z



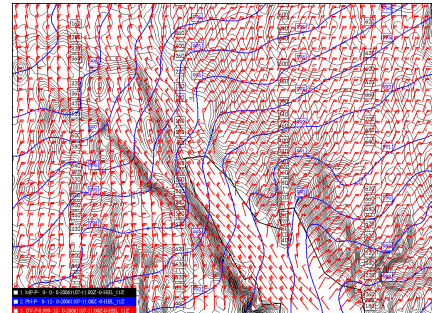
(d) 17 Z



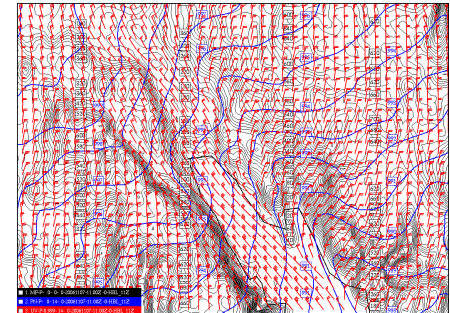
(e) 19 Z



(f) 21 Z



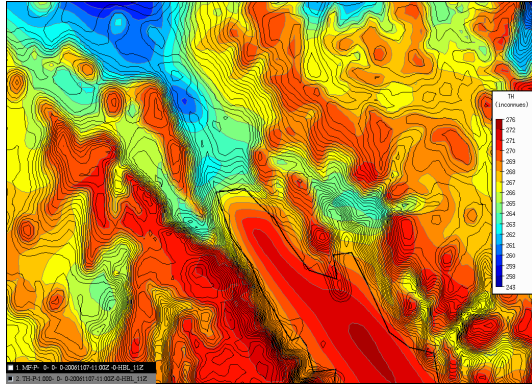
(g) 23 Z



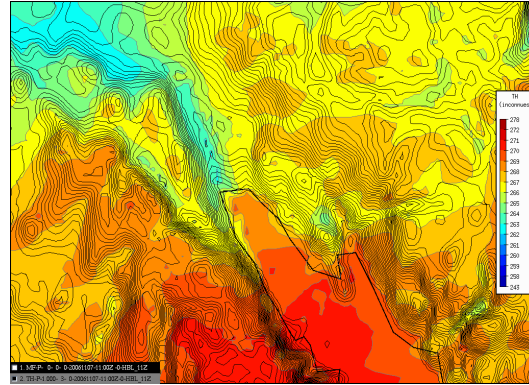
(h) 01 Z (+1d)

4:

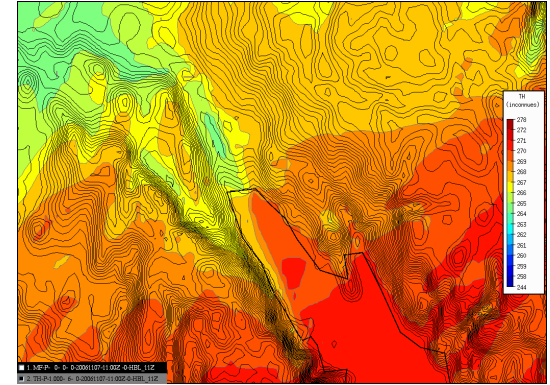
Surface potential temperature (HBL_11Z)



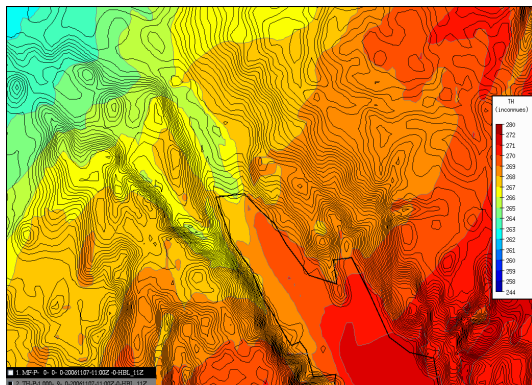
(a) 11 Z



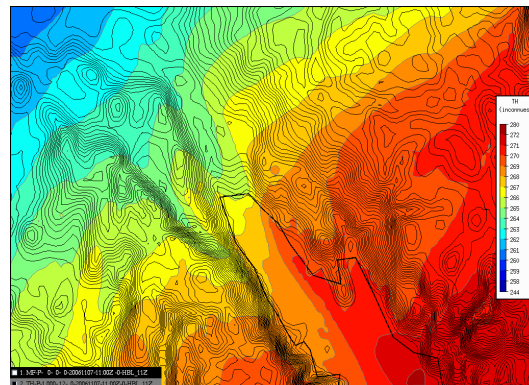
(b) 14 Z



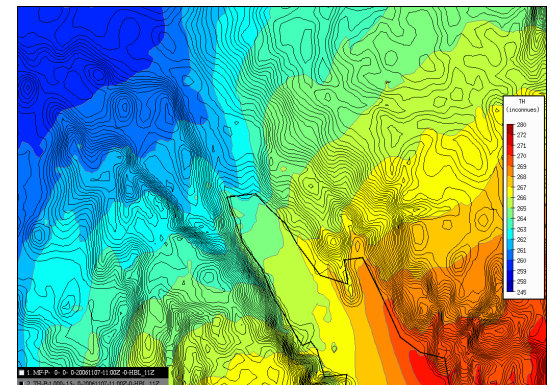
(c) 17 Z



(d) 20 Z



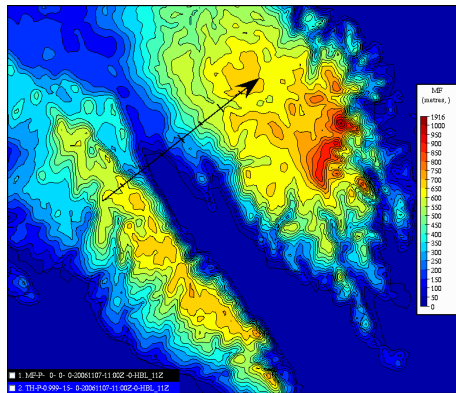
(e) 23 Z



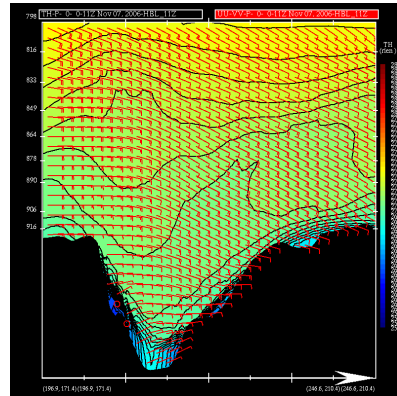
(f) 02 Z (+1d)

5:

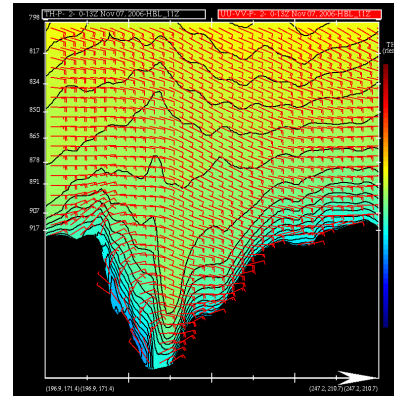
Cross-sections of potential temperature and wind (HBL_11Z)



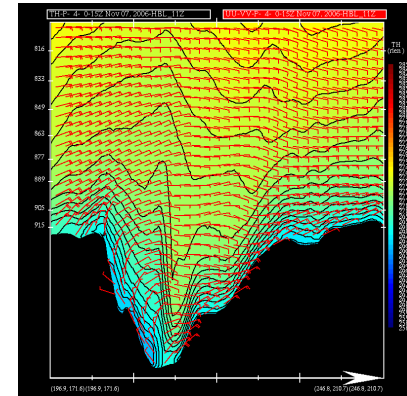
(a) Cross-section direction



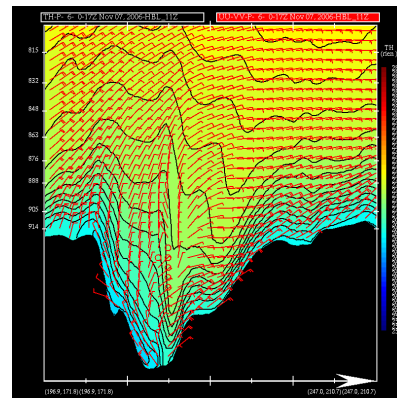
(b) 11 Z



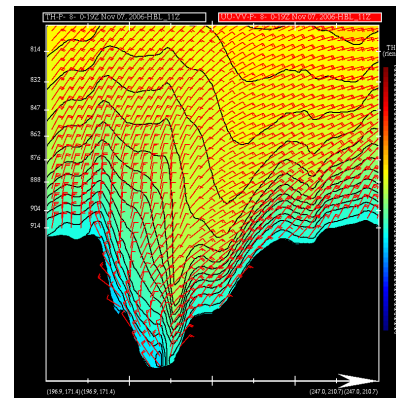
(c) 13 Z



(d) 15 Z



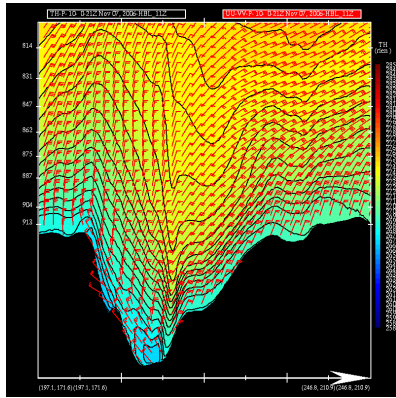
(e) 17 Z



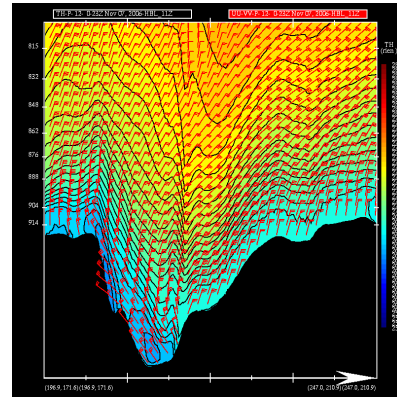
(f) 19 Z

6:

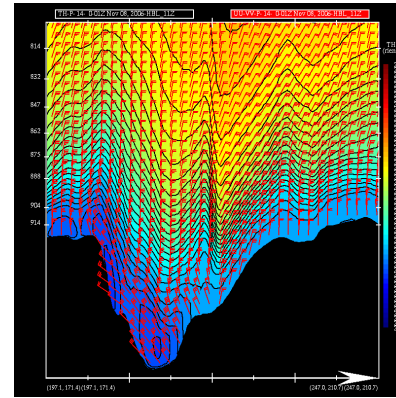
Cross-sections of potential temperature and wind (HBL_11Z)



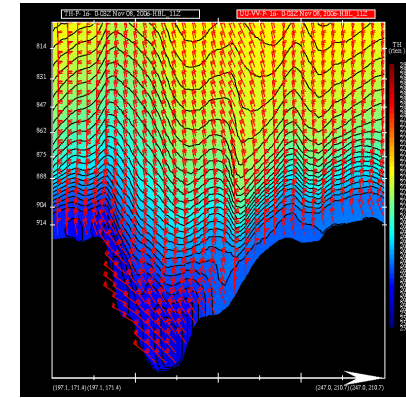
(a) 21:00 UTC



(b) 23:00 UTC



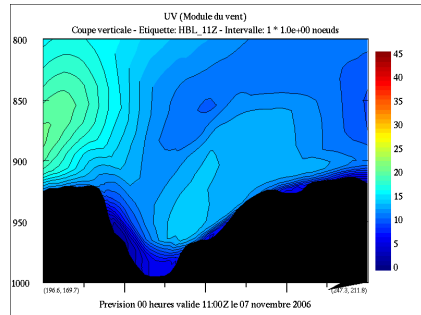
(c) 01:00 UTC (+1d)



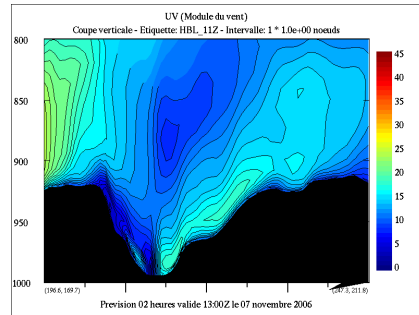
(d) 03:00 UTC (+1d)

7:

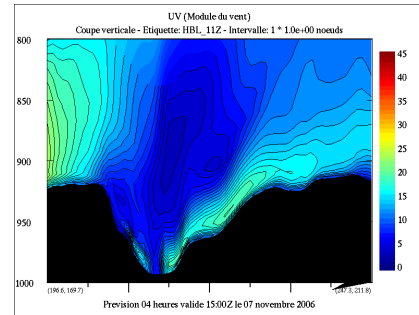
Cross-sections of wind speed (HBL_11Z)



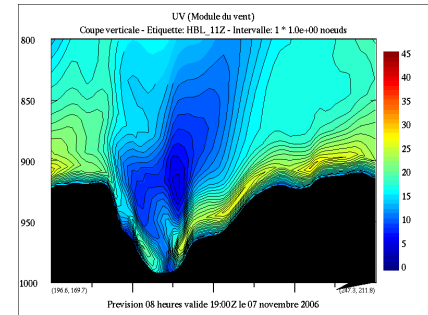
(a) 11 Z



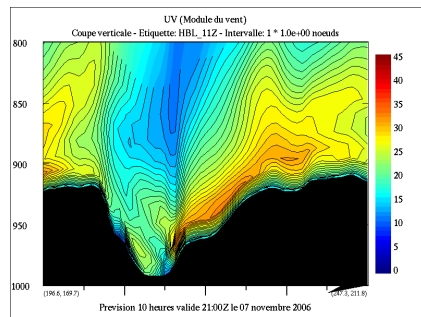
(b) 13 Z



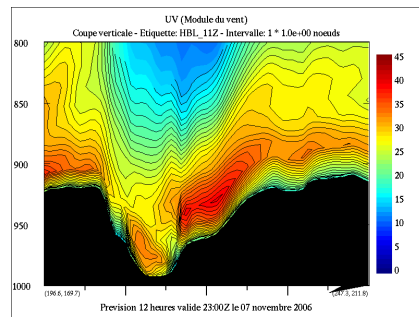
(c) 15 Z



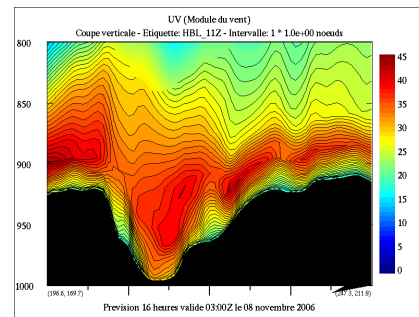
(d) 19 Z



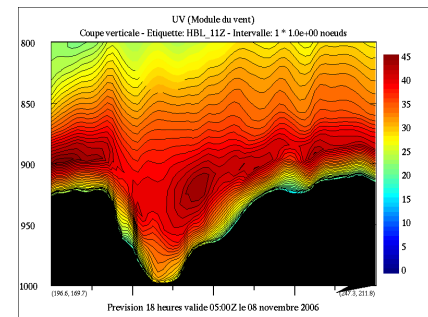
(e) 21 Z



(f) 23 Z



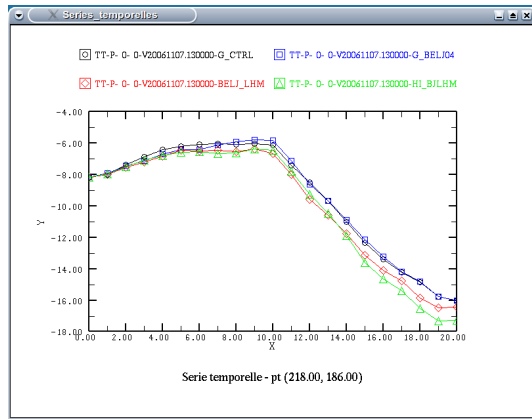
(g) 03 Z



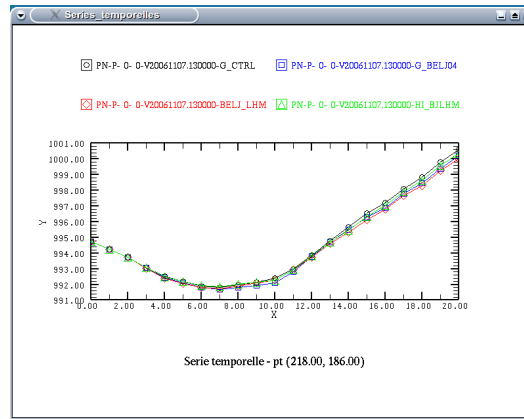
(h) 05 Z

8:

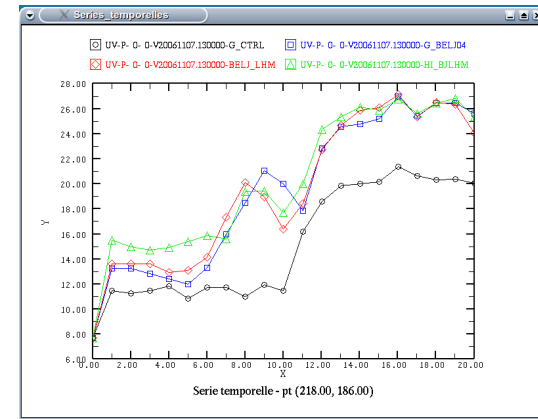
Time series of surface variables at Iqaluit



(a) Temperature (1.5 m)



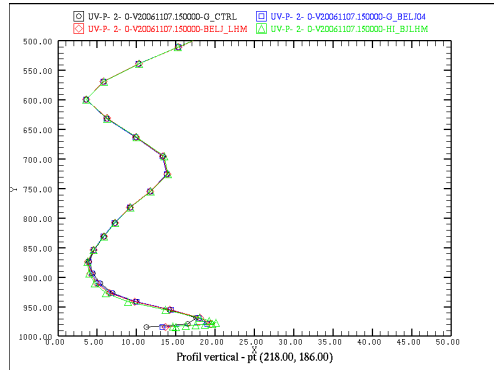
(b) Sea level pressure



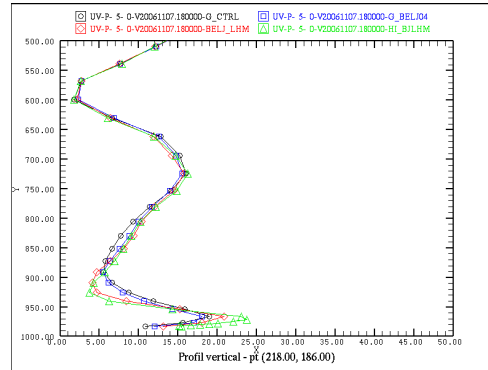
(c) Wind speed (10 m)

9:

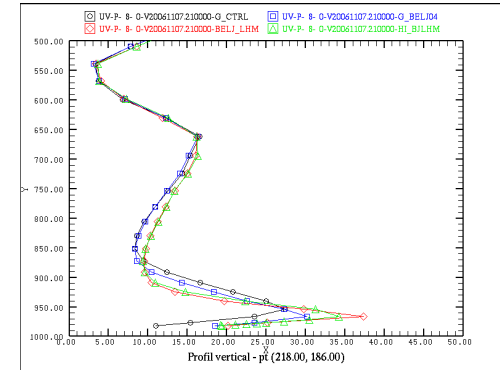
Wind speed profiles at Iqaluit and over the bay



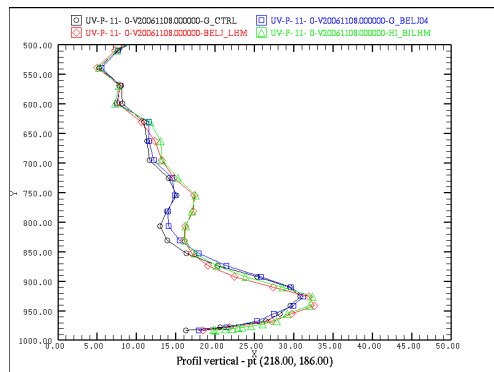
(a) 15:00 UTC



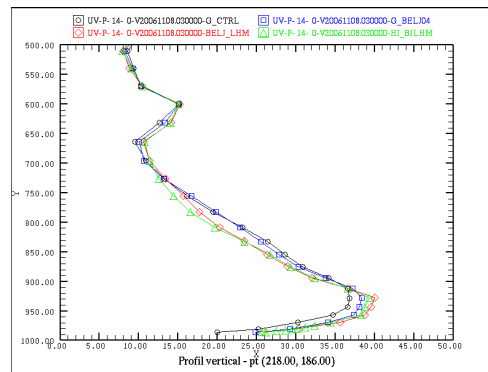
(b) 18:00 UTC



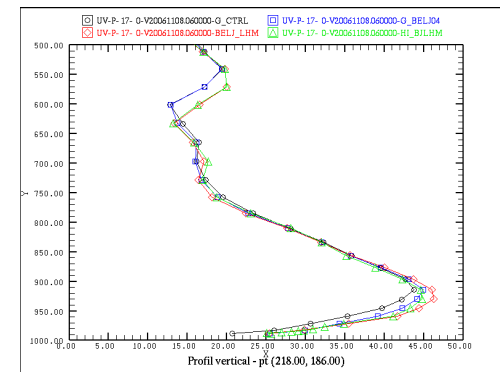
(c) 21:00 UTC



(d) 00:00 UTC



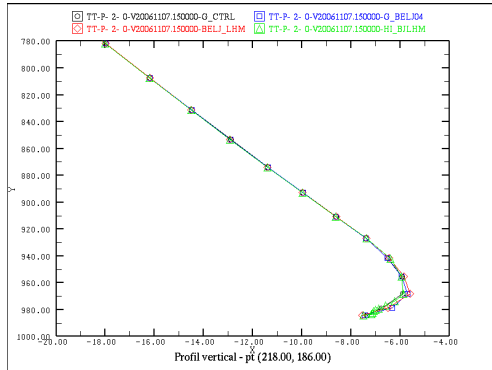
(e) 03:00 UTC



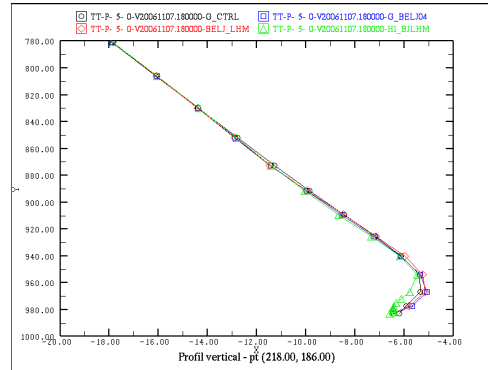
(f) 06:00 UTC

10:

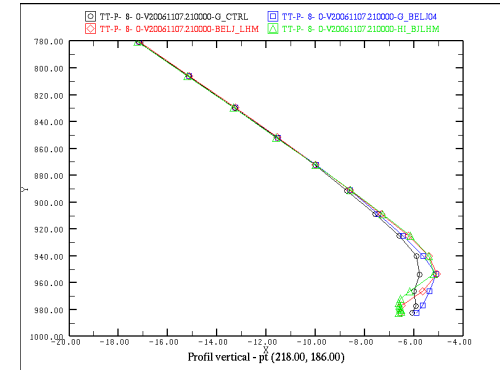
Temperature profiles at Iqaluit



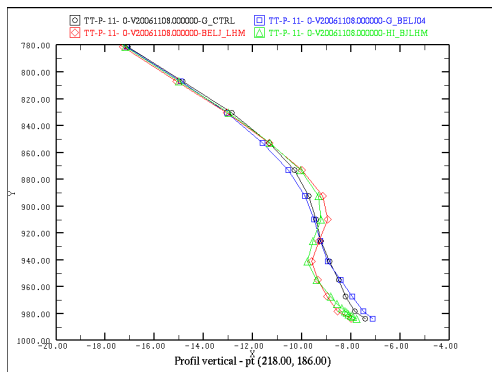
(a) 15:00 UTC



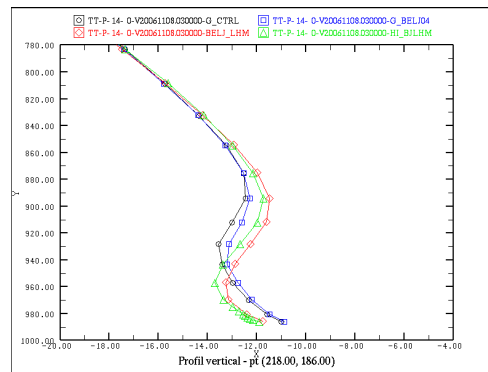
(b) 18:00 UTC



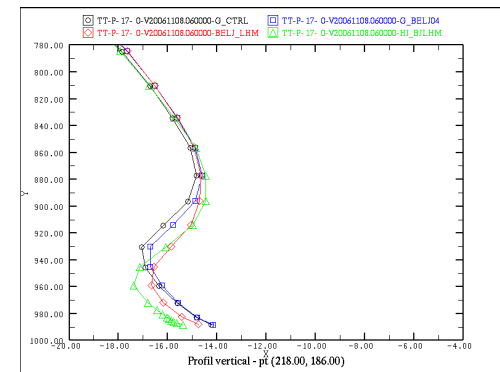
(c) 21:00 UTC



(d) 00:00 UTC



(e) 03:00 UTC



(f) 06:00 UTC

11:

Conclusions

-