

# POLICY, POLITICS AND PROCESS:

THE PLANNING AND IMPLEMENTATION OF CYCLING EQUITY IN WINNIPEG, MB

CANDIDATE: AARON SNIDER  
 ADVISOR: ORLY LINOVSKI  
 INT. ADVISOR: RICHARD MILGROM  
 EXT. ADVISOR: DEREK YAU

UNIVERSITY OF MANITOBA  
 FACULTY OF ARCHITECTURE  
 DEPARTMENT OF CITY PLANNING

This project received generous financial support from the University of Manitoba Graduate Fellowship

## RESEARCH QUESTIONS

1. What are the most important components of an equitable bike system?
2. What are the main obstacles to pursuing and achieving an equitable bike system?
3. Has Winnipeg's bike system become more equitable since the Winnipeg Pedestrian and Cycling Strategies were adopted in 2015?
4. What is necessary to overcome barriers and provide an equitable bike system in Winnipeg?

## RESEARCH METHODS



### Budget Analysis

- searched City of Winnipeg capital budgets from 2015 to 2020 for investments in bike infrastructure
- identified items that were tied to specific locations



### GIS Analysis

- mapped investments found in the budget analysis
- calculated the breakdown of bike investment across the city by wards and census tracts



### Semi-structured interviews

- with two planners, two planning consultants, three city councillors and two bicycle advocates
- transcribed and coded to identify themes

## CONCLUSIONS

COMPETING PRIORITIES AND POLITICAL AND FUNDING BOTTLENECKS IN WINNIPEG'S BICYCLE PLANNING PROCESS SYSTEMATICALLY DILUTE ITS FOCUS ON EQUITY.

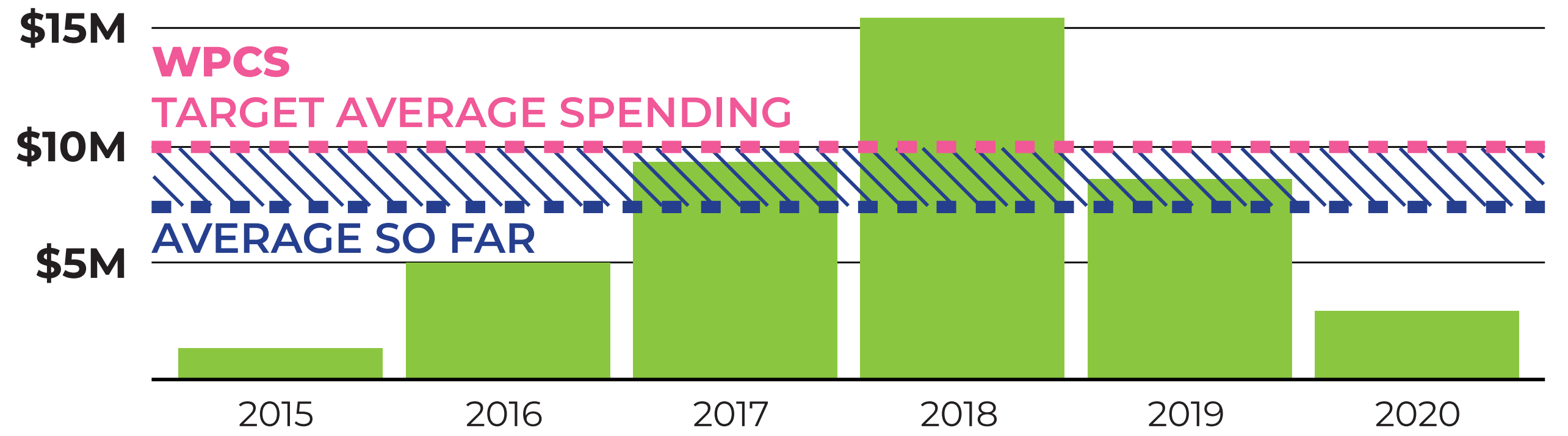
WINNIPEG NEEDS TO PLACE A GREATER FOCUS ON THE EQUITABLE DISTRIBUTION OF CYCLING'S BENEFITS THROUGHOUT THE PLANNING AND IMPLEMENTATION OF ITS BICYCLE NETWORK.

THIS REQUIRES A BETTER UNDERSTANDING OF THE SYSTEMIC OBSTACLES TO EQUITY IN CYCLING, INCLUDING IN POLITICS, POLICY AND DEVELOPMENT.

## WHAT WAS BUDGETED FOR CYCLING?

### Total Annual Public Bicycle Investment

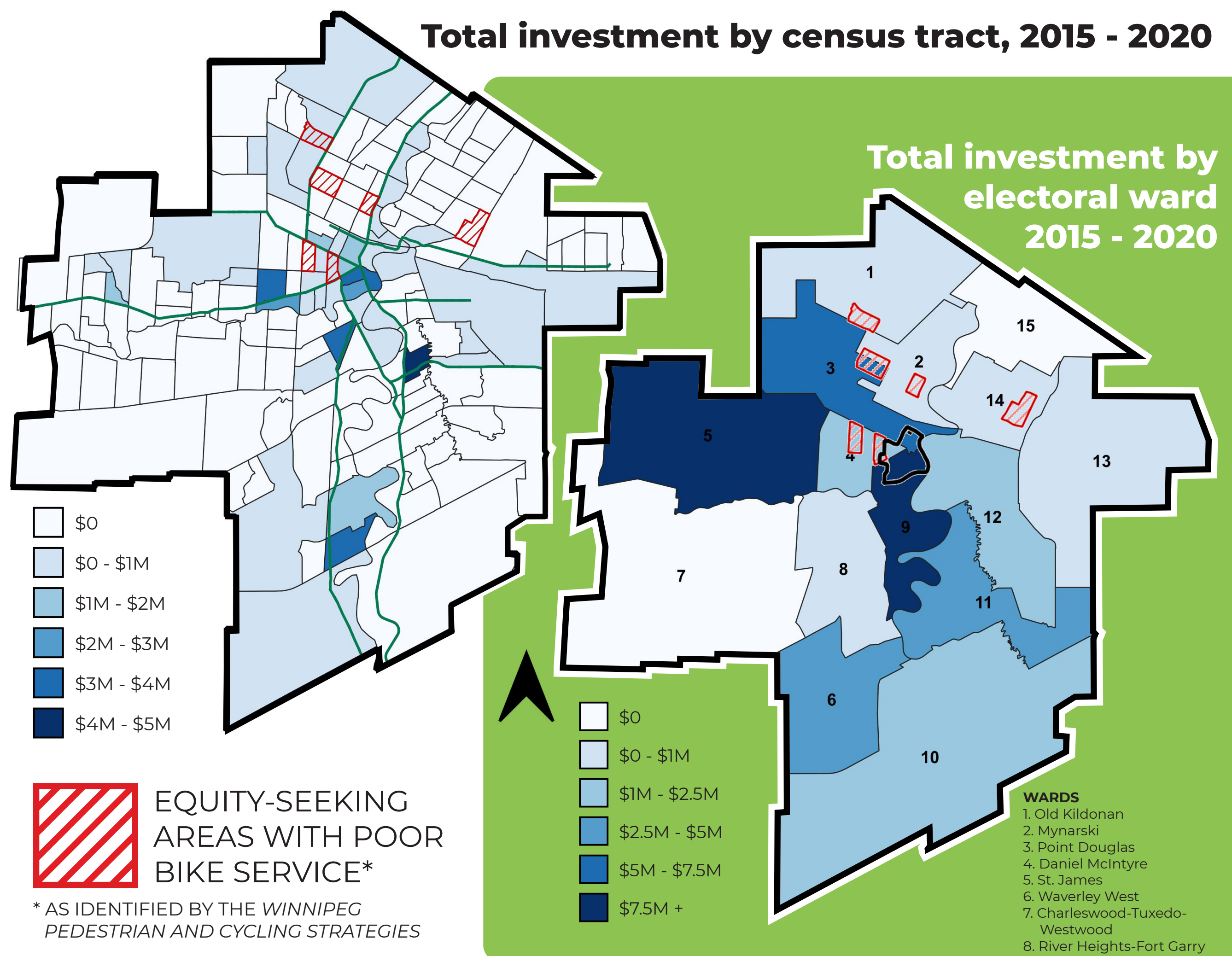
(Budgeted amounts in specified locations)



### KEY FINDING 1

SIX YEARS ON FROM THE ADOPTION OF THE WPCS, THE CITY OF WINNIPEG HAS SPENT APPROXIMATELY 75% OF THE AMOUNT SUGGESTED BY THE PLAN.

## WHERE WAS IT BUDGETED TO GO?



### KEY FINDING 2

4/6 CENSUS TRACTS IDENTIFIED AS THE MOST NEEDFUL OF BICYCLE INVESTMENT IN THE WPCS RECEIVED NO INVESTMENT DURING THE STUDY PERIOD

## WHAT DID PARTICIPANTS SAY?

INTERVIEW THEMES	COMPONENTS OF AN EQUITABLE BIKE SYSTEM	BARRIERS TO AN EQUITABLE BIKE SYSTEM	ASSESSMENTS OF WINNIPEG'S BIKE SYSTEM
INTERVIEW CODES	<ul style="list-style-type: none"> <li>• SAFETY</li> <li>• ACCESSIBILITY</li> <li>• FOCUS ON VULNERABLE USERS</li> </ul>	<ul style="list-style-type: none"> <li>• BUDGET</li> <li>• POLITICAL SYSTEM</li> <li>• UNEQUAL ABILITIES TO ADVOCATE</li> </ul>	<ul style="list-style-type: none"> <li>• SOUTH FAVOURED OVER NORTH END</li> <li>• NOT SUBSTANTIALLY MORE EQUITABLE</li> </ul>

### KEY FINDING 3

THE PEOPLE PLANNING, FUNDING AND ADVOCATING FOR WINNIPEG'S BICYCLE SYSTEM SEE EQUITY AS BROADLY IMPORTANT TO THE CITY, BUT MANY DO NOT THINK THE SYSTEM IS MORE EQUITABLE NOW THAN IN 2015

SCAN THIS CODE TO SEE THE FULL REPORT

