

Network

2008/2009

University of Manitoba Faculty of Architecture

Environmental Design

Architecture

City Planning

Interior Design

Landscape Architecture



UNIVERSITY
OF MANITOBA



FAUM

Network is an annual joint publication of the
Faculty of Architecture and the Partners Program.

Environmental Design
Architecture
City Planning
Interior Design
Landscape Architecture

The Faculty of Architecture aspires to offer widely
recognized and highly valued design and planning
undergraduate and graduate programs that promote
a respectful, collegial, interdisciplinary culture of
teaching, scholarship and service within the
University and beyond.

Network is circulated to Faculty of Architecture
alumni, and professional and industry firms throughout
Western Canada. Network welcomes articles, comments and
information related to issues affecting the design
community.

To update your mailing address please contact:

Network
214 Architecture 2 Bldg
Faculty of Architecture
University of Manitoba
Winnipeg, MB R3T 2N2
Attn: Shelly Goodacre
goodacre@cc.umanitoba.ca

Design: Thom Fougere & Nils Vik
Produced by the Faculty of Architecture
Text Editors: Doug Clark, Shelly Goodacre
Printed By: Friesens Corporation in
Altona Manitoba, Canada

Network is also available in PDF format:
<http://umanitoba.ca/faculties/architecture/partnersprogram/index.html>

2008 / 2009

Environmental Benefits Statement

Partners Program - Faculty of Architecture saved the following resources
by printing the pages of this book on chlorine free paper made with 100%
post-consumer waste.

Trees	Water	Solid Waste	Greenhouse Gases
22	10,283	624	10,283
Fully Grown	Gallons	Pounds	Gallons



Calculations based on research by Environmental Defense and the
Paper Task Force. Manufactured at Friesens Corporation



Mixed Sources

Cert no. SW-COC-001271
© 1996 FSC

Welcome

- 05 Letter from the Dean
- 07 Dr. David Witty
- 08 Environmental Design
- 10 The Body
- 12 Container

Partners Program

- 16 Partners Program
- 18 Smith Carter
- 22 Forks Renewal Corporation
- 23 Alsip's
- 24 Raymond S.C. Wan
- 24 Friesen Tokar Architects
- 25 Gateway Kitchen & Bath
- 26 O2 Planning & Design
- 27 PIDIM
- 28 Cohos Evamy
- 30 Stantec
- Winnipeg Airports Authority

Inside the Faculty

- 34 Profile : Student Distribution
- 36 Dean Search
- 37 Department Reports
- 39 Cultural Events
- 39 Faculty Research and Creative Work
- 40 Dead on Arrival
- 40 Annual Student Exhibition + Celebration
- 41 Atmosphere
- 43 Teaching LEED
- 43 CAPS
- 44 Architecture & Fine Arts Library
- 44 CADLab
- 45 Product Catalogue Collection
- 45 Green is Good
- 46 Landscape Architecture Design
- 46 LASA
- 48 IDeAS
- 49 PN2008
- 50 South Point Douglas
- 52 Traveling Concepts
- 59 Architects without Borders
- 62 Design Competitions
- 64 Joan Harland
- 64 Designing the Future
- 65 Immersive Re-Searching
- 66 Awards
- 68 Étienne Gaboury
- 70 Accomplishments



Spring, 1965. Graduates in courtyard
(photo courtesy of Winnipeg Building Index)

Letter from the Dean

A Tribute to our Alumni

Dr. David Witty

We are a privileged lot within academia. We are tasked with the enviable job of teaching upcoming generations of students, researching topics that vitally interest us, and serving our professions and the community through our knowledge and skills. It can be a challenging job; one that can require unending hours, one that seems to demand more than we can give, and one that surprises us with the complexity of a large institution. Yet, amidst those challenges there rests a fundamental truth: our lives in academia are like no other. It is rich in history and tradition that has been shaped by the evolution of ideas, events and society while staying true to the notions of sanctity of idea exploration and confirmation.

I came from practice (and part-time university teaching) to this position. I had some ideas of what might be required and expected. I did not appreciate fully the nuances of the university as an institution. But, quickly I came to realise that, in addition to its faculty and students, the university is only as good as its administrative staff, its physical plant personnel, its senior administrators and its hundreds of 'doers' that enable the place to function and function well.

In our case, the Faculty of Architecture is supported by a large number of people who ensure that the day-to-day life of the Faculty runs as smoothly as possible. There are 11 admin staff who work in the Dean's Office, Environmental Design Program, and Graduate Programs (Architecture, City Planning, Interior Design and Landscape Architecture). Without them, the Faculty could not survive. There are four staff working in the CADLab, ensuring that our technology is appropriate and functioning. The Partners Program, our outreach arm to the professions, industry and designers, has two staff and the Product Library one staff member. We have 49 faculty, of which 35 are full-time tenure or tenure-track positions. This is an extraordinary group, supplemented by 29 part-time sessionals.

But, in my view the foundation of the Faculty rests with the alumni. It is the alumni that give us meaning, a sense of accomplishment and links to our past and our future. It is the alumni who graciously support our students through scholarships and bursaries. It is the alumni that I honour in this edition of Network. To all of you who have supported our Faculty . . . thank you! Through you, over the past eight years, we have raised nearly \$5 million in

new scholarship and bursary support, and monies to fund new lecture series and the JAR Courtyard improvements. Without your continued commitment of financial support, we would languish.

So, if you can see your way clear to leave us a bequest, to make a donation to the Faculty Endowment or create a special scholarship or bursary in your name or that of someone else, please do so. Your legacy will make a difference, to the Faculty and to its students and faculty members.

Sincerely,



David R. Witty PhD, MRAIC, FCIP
Dean, Faculty of Architecture
(2001-2009)



Spring, 2009. Year End Exhibition courtyard installation.

Dr. David Witty

Ph.D., MRAIC, FCIP

Professor and Dean, Faculty of Architecture (2001-2009)

Doug Clark

While he received his undergraduate and graduate education in Ontario and British Columbia, David Witty has had an extensive and distinguished private practice and education career in central Canada. Between 1976 and 1991 he was firmly ensconced in Winnipeg in partnership with Garry Hilderman and taught a variety of courses in the Faculty of Architecture. From 1992 - 2001 however he retreated to BC to obtain a PhD and focus on teaching and private practice and to search out life on Bowen Island where he and Marg and their family currently own and operate the Bowen Island Pub.

After an intensive international search and numerous private and public presentations Dr. David Witty was hired August 1 - 2001, to become the 7th Dean of the Faculty of Architecture since 1964.

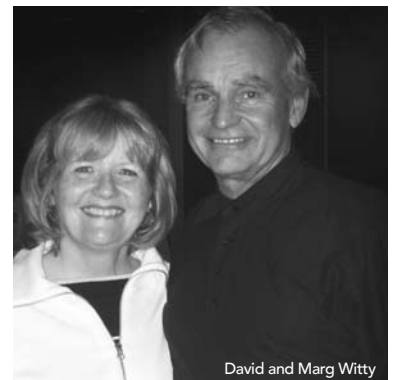
Since then he has made a tremendous impact on the Faculty, the University and the community during his tenure as the Dean of the Faculty of Architecture.

Highlights:

- Increased the endowed scholarships and bursaries in the Faculty to over \$6.0 million
- Introduced a student supported and funded tech fee which has leveraged over \$2.0 million in improvements for the Faculty and students
- Was the Dean when the Centre for Architectural Structures and Technology (CAST) was officially opened on Oct 29, 2002 and when the \$5.0 million renovation of the John A Russell Building was completed in Sept 2006.
- Ensured that before his departure we saw work on the Courtyard started and renovations to an expanded workshop underway
- Has been a strong advocate for the Faculty of Architecture as a professional mentor for junior staff and as an educator at the Deans and Directors level as well as University 1, where he taught "Introduction to Urban Design"
- Has been the Acting Department Head for both Architecture and Interior Design and as such has added to his well rounded professional planning expertise and "Fellow" designation which was conferred upon him in 1998
- Has championed the cause for Aboriginal students to be engaged with the Faculty and established a First Nations Advisory committee to support and implement his initiatives
- Has been able to take four separate and distinct Graduate departments and an undergraduate program and move them in a common direction where we now see significant curriculum and staff changes being made that will reposition the school and make it recognizable for many years in the future
- Is known for giving his famous Faculty of Architecture "we are the FIRST" speech all over the world to anyone who would invite him to talk about the school
- As a community facilitator and change agent David has led design discussion and charrettes on many of Winnipeg's key development challenges:
 - Kapyong Barracks, Waverley West
 - The Forks site, and South downtown
- Was the first appointed Chair of the newly created Downtown Advisory Committee and has been the instigator of articles that have carried the following titles:
 - A Vision for Winnipeg - Environment Not Forgotten in Southern City Suburb, Smart Growth is best plan for City, and Better by Design*

David Witty has expanded the profile of the Faculty of Architecture and the City of Winnipeg around the world - from China, to Turkey, Australia, Dubai, and the National Capital Commission in Ottawa, graduates, educators and practitioners know about us.

From the entire Faculty David, we thank you.



David and Marg Witty

Environmental Design

2200 graduates

40+ years of history

Doug Clark



The Environmental Studies undergraduate program was created in 1966 as a Department within the Faculty of Architecture with dedicated staff and a mandate over three years to both provide 30 credit hours of Arts and Science classes as well as the thorough grounding in the history and principles of design. For those who remember the early days, all of these elective courses were accommodated if and when there was any time left over from the demanding studio assignments. Over the years the Faculty has generally accepted 95-110 students into this program from an applicant base that has historically ranged from 250 - 350 per year.

“The Environmental Design program is envisioned as a strong multi-disciplinary undergraduate degree in its own right and provides a solid base of design education for students intending to pursue careers and/or graduate studies in a wide variety of disciplines, including the Faculty’s

master degrees in Architecture, City Planning, Interior Design and Landscape Architecture, and at other institutions globally” (U of M - Undergraduate calendar - 2008-2009)

Over time, numerous different reform developments have occurred that have altered both the name and the operation of the Undergraduate program:

1990-1991 : The Faculty of Architecture determined that there would be no direct entry from high school into the Undergraduate program without the completion of 30 credit hours of University programming - this allowed the Faculty to concentrate on the delivery of specific courses which were deemed to be necessary for the undergraduate training. The 30 hours would be made up of 18 hours from Arts / Environment, Science /Environment or Arts/Science/Environment and 12 hours of electives which would later include the following four foundation courses provided

by the Faculty:

- Introduction to Environmental Design
- History of Culture, Ideas and Environment 1
- History of Culture, Ideas and Environment 2
- Visual Literacy

1992 : The degree and name of the program was changed from Environmental Studies to Environmental Design

1998 : University 1 Introduced by the University of Manitoba to deal with all first year students.

Environmental Design becomes a Program within the Faculty of Architecture with only a Program Chair - All teaching support would come from the Faculty either through the use of Sessional Instructors or from within the disciplines of Interior Design, City Planning, Architecture and Landscape Architecture.

The three year ED Program would



2009 Year End Exhibition

consist of studio and general design courses in the first and second years and in the third year students would opt for a specialization in Interior Environments, City Planning, Landscape Architecture or Architecture.

2008-2009 : After several years of review the most recent changes have been incorporated which include:

Hiring of four permanent instructors to deliver the ED2 program. The ED2 curriculum will consist of 33 credit hours Courses:

- Urban Media Lab (pre-fall)
- Tectonic Precedent
- Ecology and Design
- Materials, Structures and Assemblies
- Natural and Human Systems
- Visual Media 1 & Visual Media 2
- Design Studio 1 & Design Studio2

ED1, ED2, and ED3 is now referred to as ED2, ED3, and ED4 in recognition of the four years of University background that

each students graduates with. Specialization will occur in ED3 and ED4 with students submitting a portfolio of work, Statement of Intent and GPA results when applying for undergraduate speciality positions in Architecture, Landscape and Urbanism or Interior Environments. Each of the three streams will accept 1/3 of the applicants from the total applications. Students will apply and note their preference in terms of a first, second or third choice.

As the ED 2 year is, for most students, their first exposure to the Studio environment it is critical that they develop an ease with the exploration and design process, as well as the ability to present, explore creatively through a wide range of media, and become engaged with the larger Faculty.

In this past year the projects range in scale beginning with the scale of “The Body” as the measurement for all scales and levels of design. The second project

“Sites and Stations” jumps to the scale of the city and the urban environment. The third project of the year “Wohnung” brings the scale back down to an understanding of the environment that we inhabit and discusses the importance of the domestic environment. In the final project “Container” the scale is reduced again and the project is object oriented. Through this process of scaling the projects the students begin to understand that detail and accuracy are important and critical at all stages of design from the city scale to the scale of the object.

It is a credit to the staff who were engaged with the ED2 students that in 2008-2009 we were treated to two major exhibitions that embraced the intent and culture of design in both practical and imaginative ways. The following two articles are a summary of these two assignments.

The Body

Garmenture

Kim Wiese & Jeff Garcia

Garmenture was the first in a series of four projects in the current ED2 program. The scale and sequence of the projects were, respectively, the body, city, building and object. The chronology of Garmenture and the issues they addressed in chronology were

Geometries/Ergonomics/Ego Corpus, Voidspace/the Body and Space, Body Wrap/Folding - Body, Space, Form and Body Wrap/Gamenture. The Body Projects began with an examination of two-dimensional projects, then focused on problem solving in three dimensions. This was accomplished through life-sized measured drawings which reinforced the body as measure, as well as the production of drawings to identify and examine voidspace and hidden boundaries; photojoiners and models investigating the body in motion in the articulation and inhabitation of space both actual and interstitial, as well as studies focusing on two-dimensional to three-dimensional transformation in folding operations. The culmination of these projects and exercises resulted in the Body Wrap project known as Garmenture.

Paramount to the final project was the application and interpretation of the previous exercises into a Garmenture - (Garment + Architecture); a portmanteau literally as well as conceptually. It was reinforced that the projects were not about fashion or a piece of clothing; it was about understanding the body and the space around it. Germane to the formulation, ideation and articulation of both the overall Body Projects series and Garmenture specifically, is the identification of the body as site, and most significantly, the body as both object and subject. With the 1:1 constructions of their Garmenture the students began to understand

hidden dimensions and the “body buffer zone”, issues concerning the spatial implications of the body in space both static and dynamic, and the body as enclosure. Inherent in the exercise was the reality of construction, structure and articulation, especially in understanding the Intrinsic properties of the materials. Significant in the overall intent of the project was both 2D-3D transformation and equally of consequence was the understanding of materials.

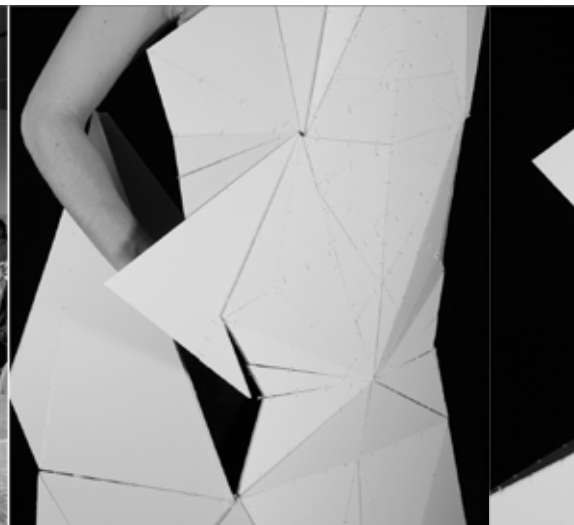
The final stage of the project was a runway presentation held in John A. Russell (JAR) Centre Space, complete with elevated stage and DJ. This presentation method allowed us to understand and identify quite easily the success of a student's explorations of concept and construction as well as their comprehension of the accumulated knowledge from their previous exercises. It was exiting to see how each student

understood and manifested, through the application of the lessons and intents of the overall projects, a concept into physical form. The list of achievements were abundant and too numerous to enumerate yet to describe the range, the following examples: a 2-Dimensional pattern that became a 3-Dimensional faceted enclosure that created complex folds and void spaces; the study of the relationship of the spatial dimensions inherent in period garments to the body unveiled like a Russian Doll, and a robe-like mesh enclosure that maintained its structural integrity when the wearer extricated herself from the Garmenture itself.

The success of the show is a testament to the intelligent rigour and the dedication to exploration that were evident in the Garmentures produced. The runway presentation was an unexpected and exciting event for the



A



- A Garmenture show and details.
Monica Hutton
- B Garmenture show and details.
Jacqueline Young
- C Garmenture show and details.
Madi Cash

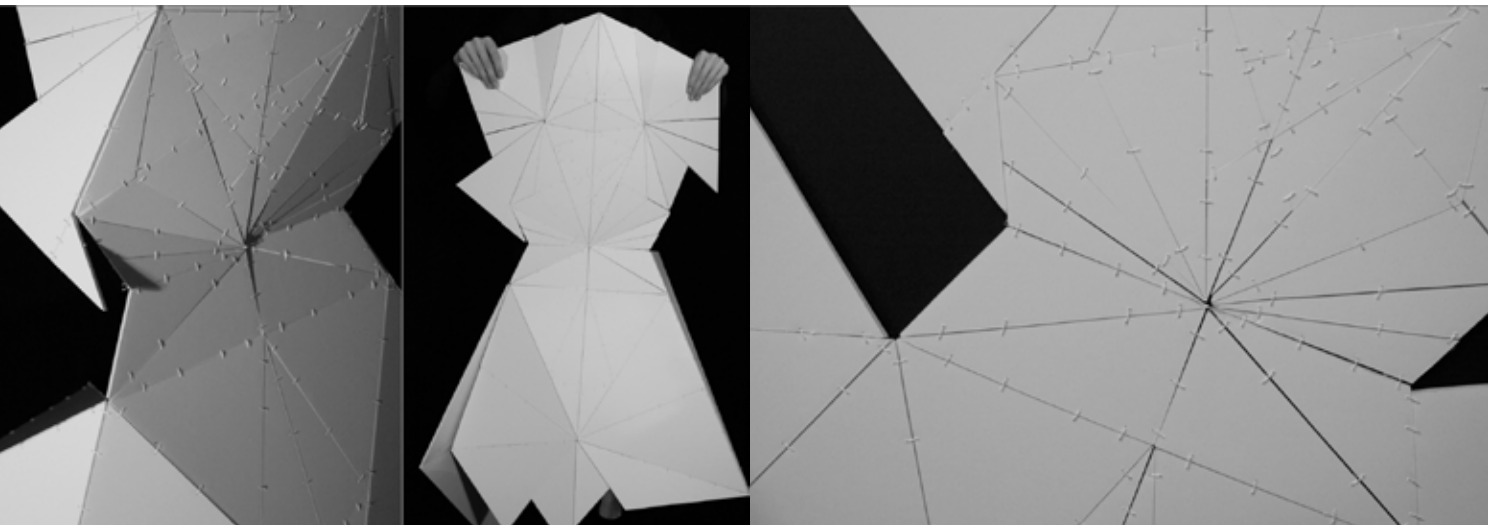
staff and students from our Faculty, family and friends, as well as interest from passing students who use JAR as a thoroughfare. It was impossible to ignore the thumping music provided by our DJ and the generous applause of the audience. The Garmenture was a celebration of the project as well as an opportunity to fundraise from a “couture bake sale” for a student involved in raising money for cancer research. The energy and enthusiasm from the project was a great opportunity for the students to meet and engage with others in the Faculty through questions and comments. The project was able to situate the students in the ED2 program within the larger presence of our school; beginning the requisite relationship and connectivity with staff, students and colleagues.



B



C



Container

Dabbling in Industrial Design

Kim Wiese & Jeff Garcia

Container was the last in the series of four projects in the current ED2 program. The scale and sequence of the projects were, respectively, the body, city, building and object. For the purpose of this project, Container was defined as a receptacle into which something can be “contained”, like an object, i.e. books, garments etc.; or a property, i.e. light, manifestos, etc.

The constraints were that it be designed using a single sheet of material at 1:1 scale and it must be fabricated. The materials that could be used had to be available as a single sheet, in wood, metal, plastic, or rubber. Fabrication methods included laser cutting, water jet cutting, welding and bending. These constraints directly informed the student’s designs as they had to create objects that were appropriate to the properties of the materials and the

methods of manufacturing.

The project addressed issues of the physicality of a container and the understanding of fabrication; the conceptual through innovation (formulated as Innovation = Function + Meaning); and of paramount importance - the significance and implication of meaning. The design sequence and methodology of the project were stage one: Precedent and Product Investigations, stage two: Thematic Framework - oikos and possibilities and stage three: Sheet. The exercises involved research into the history and design of a designer; the detailed investigation of an ubiquitous super normal object in drawing and photography, drawing and model building as investigative tools for their container design, the physical production of the design, and the documentation of the totality of the



A



B



C

project in a booklet. The multifarious methods of investigation through graphic design, studied drawings, investigative/conceptual sketches, photography, and model building exposed the students to the limits, the means and the possibilities of how to communicate their ideas.

The historical, conceptual, behavioral and social implication of the objects in creating meaning were emphasized with the same rigour as the physical production. The creation of a container informed with substantive meaning and relevance was a pertinent pedagogical objective. Students needed to be acutely cognizant of the ramifications of design including designing beyond trend and the reduction of redundancy. Questions such as “What makes this different from what already exists?” could be addressed in regards to its function and/or production, and “How is this relevant?” could be answered simply by whether the student would want to

use it themselves. In ascribing meaning and addressing the appropriateness of fit, the projects should be able to suggest the lifestyle, condition and values of the designer and the intended user.

The final projects were displayed in Room 225 Architecture 2 in a style akin to a curated museum exhibit to much success. Graphic posters were produced by each student to advertise, inform and communicate the intents and purpose of their containers, while students presented ‘Oregon Style’ by standing at their projects and discussing it with individuals or small groups. It was an opportunity to celebrate their work with the staff, students, family, friends and many of the manufacturers who helped fabricate their projects. Internationally known industrial designer Craig Alun Smith, who was noted by wallpaper* magazine as being a Top 10 designer internationally as a “one-to-look-out-for”, joined us to view the work (it should be

- A Devine-o.
Prototype. Kristian Morse.
- B House of Shelves.
Prototype. Judith Cheung.
- C Moth Light.
Prototype. Justin Wolters.

noted that during the initial stage of the design process for the Container project, Craig joined us for a week as both a presenter and external design critic). He remarked that overwhelmingly the work that was shown was commensurate with work that he saw produced at a fourth year level at a renowned design and art school in Ontario. The work was lauded by many others and it was a rewarding testament to the rigour, dedication, sophistication, energy and humour of student work produced in all four studio projects undertaken in the ED2 program.

Partners Program

16	Partners Program
18	Smith Carter
22	Forks Renewal Corporation
23	Alsip's
24	Raymond S.C. Wan
24	Friesen Tokar Architects
25	Gateway Kitchen & Bath
26	O2 Planning & Design
27	PIDIM
28	Cohos Evamy
30	Stantec
	Winnipeg Airports Authority

Partners Program

An External Link

Doug Clark

The Partners Program was conceived and introduced into the fabric of the Faculty of Architecture in 1993 with a goal to provide an external link and connection with industry, business and the professional community. The mandate of the program is to promote communication between professionals, industry, educators and students to ensure that students within the Faculty of Architecture receive an excellent and relevant professional education that is rich in theoretical and technical skills. The program focuses on areas of mutual awareness both on the Faculty and the practice of design. The following research / educational events occurred in 2008-2009:

September 12, 2008

Homecoming Reception, Class of 1958

October 30, 2008

Professor Lancelot Coar
Clearwater Studio

For the second year, students participated in the process of deconstruction and reconstruction in the small rural southern community of Clearwater, Manitoba. This research dinner also featured a presentation by Jason Andrich on behalf of Harvest Moon Local Initiative and the Harvest Moon Society who have been active in the community since 2002.

December 4, 2008

Beth Harmon Vaughan FIIDA, LEED-AP
Office Director, Gensler Architecture, Planning and Design Worldwide. Phoenix, AZ

Gensler is a 3000 person / 30 office worldwide planning and design practice. Beth Harmon Vaughn has combined an active professional practice with extensive academic and teaching experience. She holds Masters degrees in Business Management and Marketing and is currently completing PhD studies in Interior Planning and Sustainable

design. She was actively involved in the \$600 million sustainable redevelopment of the Phoenix Convention Centre over the past four years and will provide insights into the planned development of this 2,000,000 sq foot facility.

December 9, 2008

Dr. David Witty
Abu Dhabi Master Plan Development

The Dean was fortunate to be invited by former Vancouver Director of City Planning, Larry Beasley to participate in a master plan workshop. Dr. Witty reported back on the ground breaking work that is taking place in the United Arab Emirates.

January 19, 2009

Arni Thorsteinson
Chair of Board of Trustees of the Canadian Museum for Human Rights

Arni Thorsteinson, in conjunction with Smith Carter, PCL and the Board of the Trustees for the new Museum provided an update into the design, procurement and construction of this signature Winnipeg building.

Congratulations to Arni Thorsteinson, a founding Partner Member who was recognized by the University of Manitoba with an Honorary Doctor of Laws Degree at the May 28 convocation ceremonies.

March 17, 2009

Claude Ouimet
Senior Vice President and General Manager
InterfaceFLOR, in Canada and Latin America

Claude introduced the company, and expounded on the story that procalimed their founder, Ray Anderson, on Oct. 26, 2007 as one of TIME Magazine's international 'Heroes of the Environment'. InterfaceFLOR is the modular flooring division of Interface Inc., based in Atlanta, USA. The company is a worldwide leader in the production of environmentally responsible modular floor coverings and other textiles.

March 25, 2009

Partners AGM and presentation of the Uganda Project by Professor Kelley Beaverford.

Professor Beaverford, founder of Architects Without Borders in Canada, continues to create special and innovative summer intersession programs for students in the Faculty of Architecture. A presentation was given on building a library in Uganda.



New Chair

Welcome Tom Gouldsbrough

At the Partners Annual Meeting on March 25, 2009 we thanked Jim August for his two year contribution as Chair of the Partners Program, and welcomed Tom Gouldsbrough of Manitoba Hydro as the new and fourth Chair of the Partners Program.

Manitoba Hydro has continued to support the Faculty of Architecture and by demonstration has spearheaded the development of a new corporate headquarters in Winnipeg which is targeted for LEED Gold certification, and was most recently named the "best tall building in the America's" by the Council on Tall Buildings and Urban Habitat. For the past six years Tom has led the process for the site selection, design team development and coordinated the design, approval and construction process of this major urban complex. Tom is now a strong advocate and active promoter of the integrated design process and a most appropriate Chair for the Partners Program.

Biography:

T.W. (Tom) Gouldsbrough - P. Eng., is the Division Manager of Corporate Services for Manitoba Hydro, responsible for corporate Facilities, Property, Purchasing, Fleet and Materials Management.

With 35 years at Manitoba Hydro, Tom has a diverse Electrical Utility background in Design, Construction, Commissioning, Project Management and Strategic Planning. He holds a Bachelor of Science degree in Electrical Engineering from the University of Manitoba.

Partners Program welcomes Homecoming

Class of 1958 - September 11 -13, 2008



On September 12, 2008 in Centre Space, the Partners Program held a Faculty luncheon for the Classes of '58 in Architecture and Interior Design. Alumni, along with representatives from student associations, Faculty, professionals and industry, enjoyed a nostalgic presentation of photos and inspirational stories.

The class of '59 will join with the Faculty during the September 10-13 University of Manitoba homecoming. Cameron Man SAS President for 1958-59 and Janet Hardy who is coordinating the gathering of Interior Designers have a program that stretches three days, and welcomes home grads from Canada, the US and Hong Kong.

Front Row

Anne (Sproule) McKenzie :1958 BID
Professor Emeritus Joan Harland
Suzanne (Flood) Sinclair :1958 BID

Middle Row

James (Jim) Rose :1958 B Arch
Stan Osaka : 1957 B Arch, 1958 M Arch CP

Back Row (L to R)

Gerald Norbraten 1958 B Arch,
Harold (Buck) Perrin 1958 B Arch
Étienne Gaboury :1958 B Arch
Gordon McGarva :1958 B Arch
Lucien (Paul) Hebert :1958 B Arch
Dr. David Witty : Dean

Membership: Partners Program

There are many benefits to being connected to the Faculty, and each individual or firm will have their own reasons for supporting the Faculty. We have attempted to ensure that the Partners Program gives value to its members, and we encourage their participation in all aspects of the Faculty.

A sampling of the benefits of membership:

- Invitation to research and educational presentation dinners each year
- Invitation to participate in Faculty Fall Awards celebration dinner
- Invitation to Faculty and student events throughout the academic year
- Invitation to private year end studio exhibition celebration event
- Opportunity to participate in Faculty based internship employment programs with a highly skilled group of students in both the undergraduate and four graduate level programs
- Opportunity to profile company in Annual Network publication which has wide distribution
- Opportunity to realize "Continuous Learning Credits" for professionals within Interior Design, City Planning, Landscape Architecture and Architecture
- Opportunity to access and utilize resources within the Product Catalogue Collection
- Networking opportunities with Faculty of Architecture, alumni and members of the profession and industry.
- Library card to access University of Manitoba system and online search databases
- Annual copy of Warehouse publication
- Provides a check for the Dean and Faculty that the curriculum is based on needs within the industry and professional practice
- Provides Faculty, students and staff engaged in research and design with valuable industry contacts
- Provides financial support, as required for scholarships, curriculum development and research
- The annual dues of \$1,000.00 not only gives you access to the Partners office and the benefits above, but also assists in building the network and extending the outreach program for the faculty.

For more information, contact:

Douglas B. Clark FCSLA, MCIP, LEED AP
Executive Director
Partners Program
Faculty of Architecture
Rm 205 Architecture 2 Building
University of Manitoba
Winnipeg, MB - R3T 2N2

P: 204.474.6801
F: 204.474.7533
clarkd@cc.umanitoba.ca

Your Support to the Faculty of Architecture:

- Provides students with valuable industry experience – "truly exceptional results depend on the proper blend of the creative and the practical"

Smith Carter

*First LEED Platinum
Certified Building in
Manitoba*

Heather Smith

“We set high expectations for this building and it has outperformed all of our targets, many of the lessons learned in the process can be applied to our clients’ facility requirements. SC3 has been a big contributor to refocusing our business and is a catalyst for ongoing research into the impact of a healthy, sustainable environment.”

*Scott Stirton
(B.E.S. ‘85, M. Arch ‘88)*

Not long ago, commercial office environments across North America looked startlingly similar. Row upon row of box-like cubicles were surrounded by hard walled, evenly spaced management offices. Today there is a dizzying array of theories on workplace design, matched with an equally large number of corporate goals that workplaces are designed to enhance. Although they may not have successfully sorted through all the possible permutations, most companies understand that physical space does impact the corporate bottom line in some fashion, and at best, can be used to significantly enhance the performance of the organization.

SC3, the third corporate headquarters building in Smith Carter's 60 year history, was designed and built expressly to meet the changing needs of the firm. Ninety-seven staff moved into the innovative and environmentally advanced building on June 28, 2004. The 49,500 square foot purpose-built workplace, occupying less than 20% of a pie shaped lot previously deemed undesirable for development, reflected the firm's departure from typical Canadian corporate architecture. The building became the catalyst for a shift in business model and operates as a means to measure the strong linkages between human performance and the built environment. The building embodies the progressive nature of the firm and illustrates how Smith Carter functions regionally, nationally and internationally.

Well ahead of the curve, Smith Carter decided to formally demonstrate that a high performance building is

one of the most effective ways to lever the intellectual capital embodied as employee knowledge; in turn capitalizing on their most vital business asset. As an international leader in the integrated design and engineering of the world's most complex buildings and environments, the firm intuitively understood the direct effect the built environment has on an organization and the people who occupy the space. The firm set out to defensively study those linkages by designing and occupying their own workplace 'laboratory'.

Further, Smith Carter embraced the opportunity to design and build a high quality workspace that would have as little impact on the environment as possible. They identified environmental sustainability as an essential component in delivering a high performance building and set an aggressive target of LEED® Gold as a declaration of its commitment to environmental stewardship. Through collaboration and dialogue, the LEED® documentation team determined that platinum level certification was possible.

SC3 would not be the example it is without the internal, tightly woven, and integrated design team it embodies and the collaboration and innovation that it facilitates. Smith Carter is passionate about expanding knowledge and expertise in areas that have a high impact for clients and staff; attaining LEED® Platinum is a significant achievement. The future will continue to provide data from lessons learned in the creation, operation and maintenance of SC3.

A new mini-site, www.smithcarter.com/green has been developed to share this knowledge.

"The LEED Platinum certification tangibly demonstrates our commitment to high performance buildings and the environment as well as our position as an industry leader in the practical application of sustainable building practices. We are excited to share our building with a broader community."

***Rick Linley
(B.E.S. '80, M. Arch '84)***

A Next Page: Smith Carter Office
The building has received critical acclaim across many measurement standards and professional disciplines: winning a Governor General's Medal in 2006, being published in Riordan and Beeker's book "The Good Office: Green Design on the Cutting Edge" 2008, and achieving LEED® Platinum Certification in 2009.







Photo: Jon Maybury

Forks Renewal Corporation

Honouring Design Excellence

Clare Mackay

Throughout its development The Forks has purposely sought out architectural excellence. At the very beginning, local architects were involved on the Urban Design Advisory Committee as part of the East Yards Task Force. The site employed its own site planners and urban design architects, following a master plan with innovation, heritage and placemaking at its core. Individual projects followed the original concepts for the site, and put in the context of 20 short years, are nothing short of miraculous for their role at The Forks and their architectural accomplishments: The Forks Market, Johnston Terminal, Market Plaza, The Manitoba Children's Museum, Manitoba Theatre for Young People, Inn at the Forks, York Avenue Rail Bridge, Historic Rail Bridge, Rail Cars, Esplanade Riel Bridge, Scotiabank Stage, Parkade, Oodena Celebration Circle, The Forks National Historic Site, Broadway Promenade, Skate Park Plaza and The Canadian Museum for Human Rights.

Many of these projects and their architects have been honoured with national and international awards, from the Phoenix Award by the American Association of Travel Writers to numerous Canadian Society of Landscape Architects National Honour Awards and an International Waterfront Centre Honour Award for Excellence.

This year The Forks Foundation set out to honour those members of the design community who have contributed to making The Forks Winnipeg's award winning destination. Over 200 guests attended The Forks Foundation Dine About, Honouring Architectural Excellence. Each of the evening's 15 honourees were recognized for their work in creating the unique character of The Forks. As part of the formal program honourees spoke of their own contributions and were presented with an original replica of the Upper Fort Garry Gate designed by prominent local artist Jordan Van Sewell.

The evening's emcee was Peter Jordan

and Deputy Mayor Justin Swandel brought greetings on behalf of the City of Winnipeg. Guests then dined their way around The Forks Market, sampling specially chosen menu items from its multicultural selection of Market tenants. True to its reputation as one of the best places to host a party, the Dine About also featured entertainment throughout the evening from atop the bridges in The Market.

Proceeds from the Dine About will support The Forks Foundation's mission to raise funds to enhance the heritage, cultural and recreational features of The Forks.

Honourees:

Cynthia Cohlmeier, Steve Cohlmeier, Terry Cristall, Gordon Ferguson, Étienne Gaboury, Garry Hilderman, Norm Hotson, James Kacki, Ross McGowan, Mike Scatliff, Ralph Schilling, Dudley Thompson, and Mark van der Zalm



Alsip's

Deeply Rooted in the Prairies

Kim Powell

Alsip's Building Products and Services is literally a cornerstone in the Manitoba market. Many of the brick buildings, with and without historical significance, throughout the province and city of Winnipeg are made with Alsip's bricks.

As a 100 year old, fifth generation and family-owned company, Alsip's has a strong reputation and a knowledgeable team of service providers.

After five generations in business, Alsip's is truly a company that values relationships. Each member of the team takes the time to genuinely understand each project's requirements to make the very best recommendations, suited to the specific needs.

A western Canadian powerhouse, once known only for its superior brick making, Alsip's now boasts a comprehensive collection of hearth solutions and building enveloping products. Alsip's is the premier

distributor of a wide variety of indoor and outdoor fireplaces, fireplace inserts, free-standing stoves, gas log sets and other accessories and venting products.

In addition to continuing its position as an industry leader in brick, Alsip's also carries a wide variety of natural and stone veneer products in colours and styles to suit all building design. Added to this is the line of industrial and commercial insulation products and stucco solutions. Alsip's is able to maintain a high commitment to quality products that stand the test of time by dealing with only the most reputable suppliers.

Alsip's is constantly searching for new, innovative products to complement its existing selection. For example, Alsip's is the exclusive distributor of Professional Water Sealant – Anti Graffiti, a dual-purpose rubber-based sealant originally created to protect buildings from water and weather damage. This new technology allows buildings to be protected from permanent blemishes with just one clear, environmentally friendly coat that simultaneously guards against weather damage and allows unwanted art to be washed away with ease.

Architects continue to rely on Alsip's for their extensive brick and masonry

experience, calling on their knowledge to source and match vintage brick. Alsip's has been a vital resource to architects and spec writers for generations, providing product information, photos and project specific details in a timely manner.

Recently Alsip's has re-branded itself with a new look. This new image is a combination of the past with the present. While the look has changed, the commitment to service excellence and delivery of high quality products continues.

In the spring of 2009, Alsip's opened its first store-front location outside Winnipeg. This marks a new opportunity for Alsip's to become a valued resource to architects, trades people and consumers in a new location. Saskatoon, Saskatchewan is home to the new design-centre style showroom and outlet, located at Unit 21 – 510 Circle Drive.

The legacy of service and product excellence continues.



Raymond S.C. Wan

Architect Inc.

Raymond Wan

RAYMOND S.C. WAN, ARCHITECT INC. is a young, progressive firm. We bring fresh, innovative ideas tempered with the combined experience of over 15 years. Our smaller firm status sets us apart from larger firms in that its principal, Raymond Wan is directly involved in every single aspect of the project delivery process. From design phase through construction to completion, our greatest strength is our internal structure. Our consistent philosophy has afforded us eight successful years in private practice and counting.

Our holistic approach to projects encompasses qualities such as the surrounding community, its environment and its relationship to the structure. We believe architecture should satisfy and stimulate the user, in forms, spaces and materials. Technical proficiency is obligatory, for spectacular design cannot overcome poor technical solutions. Attention to the details of construction and their proper implementation is key. Most



A

importantly, communication and teamwork is essential, maintaining a relationship with our consultants and client, with ideas transmitted collectively. As a result, our work ethic and resolve for attention to detail has culminated in our commitment and dedication to our clients and have earned our firm a growing number of repeat clientele.

A Pembina Hall
University of Manitoba, Winnipeg.
Rendering. Raymond S.C. Wan
Architects.

Friesen Tokar Architects

Architects + Landscape + Interior Designers

Ken MacKinnon

Friesen Tokar Architects + Landscape + Interior Designers (ft3), a leader in sustainable design, was established in Winnipeg and has been serving Western Canada since 1975. Friesen Tokar is a member of the Canada Green Building Council and is committed to designing buildings that are good for people, businesses, communities and ecosystems. It was the first firm in

Winnipeg to adopt the 2030 Challenge to provide carbon-neutral buildings by the year 2030.

Two major projects outside of Manitoba are contributing to the firms continued growth and has allowed for the addition of a new office in Calgary; headed by firm principal and University of Manitoba alumnus Ken MacKinnon. Both projects are being designed

according to Leadership in Energy and Environmental Design (LEED) standards.

In Calgary, Friesen Tokar is one of two firms that will contribute interior design expertise to a massive and innovative \$1.41 billion, 44-acre, healthcare facility known as the Calgary South Health Campus. The first phase of the South Health Campus, for Alberta Health Services, the Calgary Health Region and Kasian Architecture, is slated for completion in late 2011. Joanne McFadden, principal and University of Manitoba alumnus, is leading a team that includes two key members who are top-of-the-class, graduating interior design students from the University of Manitoba.

In Regina, Friesen Tokar won a

major national competition to design up to three cadet dormitories at the RCMP Academy. The RCMP dormitories are valued at \$60 million. The design was the brainchild of a Friesen Tokar team of creative designers and championed by Jennifer Reynolds, a University of Manitoba graduating architectural student. The project is part of the \$150-million rejuvenation and modernization of the Regina Academy. The RCMP will boast a signature building that puts a contemporary twist on its history and tradition, and echoes its 'nowhere near ordinary' career slogan. It is this project's design competition images that are featured here.

A year ago, the firm moved to its edgy, 'green' digs in The Strand on Waterfront Drive, located in Winnipeg's historic East Exchange district. The innovative work environment is a huge draw for the best design talent in the city. Clusters of mobile workstations enable new graduates to work side-by-side with seasoned design professionals and senior principals.

Principals of the firm are Rudy P. Friesen, Brian W. Tokar, Jerald D. Peters, Rock G. Jerome, Joanne L. McFadden, Ken A. MacKinnon and John B. van Leeuwen.

RCMP Dormitories
Regina, Saskatchewan. Rendering.
Friesen Tokar Architects.



Gateway

Kitchen & Bath

Tamara Eckstein &
Amanda Saprowich

Often when a new client begins a project with Gateway Kitchen & Bath they come in expressing an uncertainty of the design and building process. Gateway's solution to this uncertainty is through carefully collaborating with the client to determine the functional and aesthetic needs of their project and to ensure that every important detail is respected in the final product. Gateway ensures this process by offering their clients a team of expert designers who work in tandem with engineers, draughtsmen and trades people in the industry, as well as using state of the art equipment in their practice.

Since 1983, Gateway has been

known for their quality residential and commercial renovations. Their innovative designs can be seen in the interiors of over 7000 local and international homes and businesses. Within these interiors you will find custom cabinetry, one of a kind furniture pieces, hand-picked accessories, and complimentary finishes.

Gateway is especially proud of their team of wood working specialists who work side-by-side with the Gateway designers and independent local designers to develop creative and custom solutions for any situation. This approach to building custom designs ensures that creativity is always matched with precision manufacturing using only the finest of materials. Also, a team of administrative staff manage the coordination of each building project, which results in a cohesive, communicative, and approachable service for their clients.

Gateway is constantly looking for ways to create new standards of



excellence which can be seen in their ever evolving showroom. Over the last 25 years Gateway has considerably grown as a company. They started as simply a cabinet building company and now successfully complete full scale building projects with ease. In the future, Gateway hopes to continue their growth and challenge of industry design standards, which will result in interesting, creative and functional environments.

O2 Planning + Design Inc.

Integrated Landscape Planning and Design

Douglas Olson, President

Located in Calgary, Alberta, Canada, O2 Planning + Design Inc. (O2) is an award-winning firm of landscape architects, land use analysts, environmental designers and town planners. Founded in 1991, O2 designs creative solutions that enhance the ecological and cultural character of the place while facilitating responsible development. O2 prepares plans and designs across the spectrum of scales, including the individual site, urban district, town and city, as well as broad-scale landscapes and regions. The firm's solution areas are: working landscapes, parks and protected areas, regional planning, urban design and town planning, and educational landscapes.

O2 has extensive experience managing complex multi-disciplinary projects throughout Canada, the United States, Asia, Africa, and Latin America. A high level of rigorous, comprehensive service has resulted in the firm's projects being recognized both at home and abroad. The firm's projects have been published in Landscape Architecture (USA), The Journal of Landscape and Urban Planning (USA), Nikkei Architecture and Landscape Design (Japan) as well as Landscapes/Paysages (Canada). O2 has won several international awards for landscape architecture and environmental design.

O2's expertise is founded upon a unique combination of project management, environmental knowledge, rigorous scientific analysis, creative design and communication. The firm utilizes effective research, together with the most sophisticated remote sensing, GIS, modelling and visualization techniques to develop pragmatic solutions. The firm's work is place orientated, ecologically sensitive, and contemporary.



A



B

- A Landscape Visualization
Kananaskis Country, Alberta. Visual
Impact Assessment
- B Sandy Beach - River Park
Britannia Slopes, Calgary, Alberta.
Combined Park Management and
Design Development Plan.



A

PIDIM

IDC AGM 2009

Jennifer Wiwchar-Fast
PIDIM President

On Friday April 3rd and Saturday April 4th, the Professional Interior Designers Institute of Manitoba (PIDIM) proudly hosted the annual general meeting of the Interior Designers of Canada in Winnipeg, Manitoba. The last time our association was host province was seven years ago in the fall of 2002.

The day meetings, including the IDC AGM, were all held at the hip and vibrant Inn at the Forks, where the delegates stayed, experiencing all the amenities and culture of the Forks.

Friday morning kicked off with a welcome from Linda Makins, the current IDC President and then quickly moved into the business sessions which were attended by both the Presidents and IDC Directors. In total there were four presentations comprised of KOWG, CIDA, IDCEC and NCIDQ. The later part of Friday's day session focused on summary discussions from the four presentations between the Presidents and IDC Directors.

Saturday morning began with the Presidents' meeting where the bulk of our time was spent discussing AIT (Internal Trade Agreement) and CAID (the IDC restructuring proposal).

Saturday's luncheon was generously sponsored by Mumby where all attendees had the pleasure of listening to our guest

speaker, Kelley Beaverford, speak of Architects Without Borders and "Building a Library in Uganda"

On Saturday afternoon, the last session was dedicated to a joint discussion between the Presidents and IDC Board which followed with the IDC AGM where Linda Makins handed over the reigns to Jenny Garbutt-Mueller our current IDC President.

In addition to the day sessions, a Friday evening soirée was held at the Musée de St. Boniface, sponsored by Haworth and Anthony Allan. And with living up to the last IDC AGM held in Winnipeg the PIDIM rose to the occasion once again and hosted a Saturday Evening Gala at the Millennium Centre. During dinner, the Interior Designers of Canada president Jenny Garbutt-Mueller presented PIDIM member Lee Finch with an IDC Fellow membership.

The PIDIM would like to give thanks to all of our sponsors for this weekend as well as the many PIDIM volunteers who generously gave of their time in helping to make this a most memorable IDC AGM.

A Saturday Evening Gala Dinner at the Millennium Centre; Theme of the evening, "Where Design Comes to Play"

Cohos Evamy

Innovation and collaboration provide groundbreaking solutions

“On the cutting edge of research, the Institutes’ mission is to create knowledge and support innovation in nano-scale science and technology. This mission and the objective of fostering collaboration while bridging the gap between scientific disciplines are in direct alignment with our firm’s integrated design approach. As designers we strive to come up with ground-breaking ways of problem-solving while at the same time providing long term relevance to our client groups. In this example, the design supports Canada’s long term research and innovation priorities.”

Michelle Sigurdson, regarding the
National Institute for Nanotechnology.
Interior Designer
Corporate Director
Cohos Evamy integrateddesignTM
(BID, 87)



A



B



C



D

The National Institute for Nanotechnology (NINT) brings together the University of Alberta, the National Research Council of Canada and the Province of Alberta to create a unique, interdisciplinary research facility focused on nano-related research.

With the establishment of NINT, researchers in diverse fields of study including engineering, biology, chemistry, physics, computing science, medicine, and pharmacy work and conduct research collaboratively.

NINT has been designed to be adaptable to the changing needs of leading edge nanotechnology research, to foster interaction within the University, to bridge the gap between scientific disciplines, and to attract both national and international collaborators.

Hall D, a significant new exhibition hall, provides Edmonton's Shaw Conference Centre with much-needed banquet and meeting space to support the varied activities of convention programs.

With the addition of Hall D and the associated renovations to the food services area and loading dock, the Shaw Conference Centre is now able to attract several national conventions that in the past overlooked Edmonton due to space constraints.

The new hall is located above the existing Conference Centre exhibition halls on the east terrace overlooking the river

valley. The entrance and associated lobby space, food service area, and ancillary support facilities are located within the existing space on the pedway level. The design stresses the integration of the new hall within the existing conference facility, from a functional as well as an architectural perspective.

Hall D provides the Shaw Conference Centre with a venue that encompasses a commanding and dramatic view of the North Saskatchewan River Valley.

At Cohos Evamy, our collaborative process is challenging, inspiring, and rewarding, and we embrace our differences. In the end, we believe that it is this key factor, which has allowed us to build upon our successes as we support each other in our pursuit of design excellence.

Established in 1960, Cohos Evamy integratedesign™ has a track record of integrated design excellence through more than 49 years of practice. With over 85 LEED® accredited professionals available in all disciplines, Cohos Evamy is committed to the practice of sustainable design on all projects. Using the most current technology and working from its offices in Calgary, Edmonton, and Toronto, Cohos Evamy's strength is in its 400 people who deliver excellence in architecture, interior design, engineering, and planning.

For more information visit cohos-evamy.com

A, B NINT, University of Alberta
Edmonton, Alberta
2008 Award of Excellence:
Canadian Consulting Engineering Awards

C, D Hall D - Shaw Conference Centre,
Edmonton, Alberta
2008 Best of Canada:
Canadian Interiors
Award of Excellence:
2008 Prairie Design Awards

Stantec and the WAA: Making Connections

Winnipeg James Armstrong Richardson International Airport Signals New Era of Development for Manitoba

Tim Phelan and Christine Alongi

When the new Winnipeg James Armstrong Richardson International Airport opens its doors to the world, it will rise above the prairie landscape and welcome visitors with a stunning display of artistic and technical innovation.

Stantec Architecture is providing Prime Consultancy, Architecture and Engineering services for the Winnipeg Airports Authority's (WAA) Airport Site Redevelopment Program, leading a world-renowned multidisciplinary design team. When the new airport opens in 2010, its impressive array of energy saving features is anticipated to make it the first Leadership in Energy and Environmental Design (LEED) Certified airport in Canada.

John C. Petersmeyer, a Principal at Stantec Architecture's Winnipeg office, says that sustainability was at the forefront of the design strategy. "The new terminal building has been designed to achieve an iconic signature status, through functionality, sustainability and aesthetics, with inherent future-proofing to flexibly meet and exceed the goals of all stakeholders long into the future," he says.

The airport's glare-free high-performance building envelope, combined with innovative venting and lighting technologies minimize the energy input required to service the building. The radiant in-floor heating and cooling system further adds to its outstanding energy performance, capturing and utilizing heat energy directly from the sun. In addition, a sophisticated heat recuperation system captures waste

heat generated from the Central Utility Building exhaust stack and various internal mechanical components, and distributes it throughout the facility for energy efficient climate control.

Combined, the airport terminal building's leading-edge energy features are projected to result in an energy output reduction of 44 percent compared to the standard set by the Canadian Energy Code for Buildings.

The \$585 million Airport Site Redevelopment will be one of the most significant capital projects ever undertaken in Manitoba, and will be as aesthetically impressive and passenger friendly as it is energy efficient.

The terminal building's unique wing-

shaped roof projections will cantilever outwards up to 14 meters beyond its walls, reducing glare while creating a signature architectural design feature.

With a two-level roadway providing separation between the departures and arrivals levels, a four-level 1,600-car parkade with a raised pedestrian link connecting to the terminal building, and 51,000 square meters of predominantly open circulation space, the building will be easy to navigate. Open vistas within the central circulation space will facilitate the efficient flow of passengers, while offering dramatic views of the runways and prairie horizon beyond 8,100 square meters of solar-regulating glass curtain walls.

Prime Consultant

Stantec Architecture Ltd.

Executive Architects

Stantec Architecture Ltd.

Master Architects

Pelli Clarke Pelli Architects

Structural Engineers

Crosier Kilgour and Partners Ltd. with Yolles

Mechanical Engineers

SMS Engineering Ltd. with the Mitchell Partnership /
Smith Andersen Consulting Engineering and Stantec Consulting Ltd.

Electrical Engineers

SMS Engineering Ltd. with Mulvey + Banani International Inc.

Lighting Consultant

Auerbach Consultants

Cost Consultant

Cheriton Management Inc.

Universal Design Consultant

Design For All

Vertical Circulation Consultant

Gulay Elevator Services

Code Consultants

LMDG Building Code Consultants Ltd.



A

Additionally, the airport terminal building incorporates universal design concepts, allowing people of all abilities access to a barrier-free and efficient airport experience.

“Universal design was important for the WAA from the start of the design phase,” says David Essex, a Principal at Stantec Architecture’s Winnipeg office. “It starts from having wheelchair access close to the main entry zone. As you proceed through the automatic sliding doors, it’s laid out so that it’s as transparent as possible. You can intuitively tell where you need to be going, greatly simplifying the way-finding experience.”

The new airport’s importance extends far beyond its walls. It is the focal point of grander plans to accelerate economic development in Manitoba’s already thriving economy.

The Winnipeg Airports Authority is developing a carefully planned airport campus connecting a range of airport-related service providers and industries. Just beyond the airport campus, CentrePort will connect air, rail, and road systems over an area of approximately 20,000 acres to facilitate the intermodal distribution and trade of goods throughout North America and beyond - on a scale never seen before in this province.

“All the excitement is about what this will do for Manitoba,” says WAA CEO Barry Rempel. “The airport terminal building is already serving as a catalyst for future development.”

He credits the greenfield air



B



C

terminal project for attracting significant investment from a range of key businesses, including the new state-of-the-art Canada Post Mail Processing Plant, Greyhound Canada’s new bus depot, the 80,000 square-foot expansion of Standard Aero’s industrial complex, and a newly announced five-star hotel.

In addition, the Governments of Manitoba and Canada recently announced the contribution of \$212.5 million towards the CentrePort project.

“It’s a direct relationship,” says Rempel. “If we weren’t doing what we’re doing, these businesses would not have considered this as a place to develop. It all comes down to connectivity. At the end of the day, we are looking for Winnipeg to be an airport city.”

Stantec’s local expertise and extensive airport design portfolio,

A Winnipeg Airport Interior.
Rendering courtesy of Pelli Clarke
Pelli Architects

B Winnipeg Airport Exterior.
Rendering courtesy of Pelli Clarke
Pelli Architects

C Winnipeg Airport Construction.
Photo courtesy of Stantec

combined with the unique strengths of Pelli Clarke Pelli Architects and its multidisciplinary project team, along with input from a diverse range of community stakeholders, ensures that the new Winnipeg James Armstrong Richardson International Airport will be a signature building that all Manitobans can draw inspiration from.

“I believe it will be a tremendous reflection of our community,” says Rempel. “It became clear early on that Stantec and its partnership were the team most likely to create something that the community can take pride in.

The design team chartered a plane and traveled from the US border up to the Canadian Shield – stopping in prairie fields – just to get a better sense of what the design would need to incorporate to capture the spirit of our province.”

Inside the Faculty

34	Profile : Student Distribution
36	Dean Search
37	Department Reports
39	Cultural Events
39	Faculty Research and Creative Work
40	Dead on Arrival
40	Annual Student Exhibition + Celebration
41	Atmosphere
43	Teaching LEED
43	CAPS
44	Architecture & Fine Arts Library
44	CADLab
45	Product Catalogue Collection
45	Green is Good
46	Landscape Architecture Design
46	LASA
48	IDeAS
49	PN2008
50	South Point Douglas
52	Traveling Concepts
59	Architects without Borders
62	Design Competitions
64	Joan Harland
64	Designing the Future
65	Immersive Re-Searching
66	Awards
68	Étienne Gaboury
70	Accomplishments

Profile : Student Distribution



Academic Staff & Support to Deliver Programs

	Environmental Design	Architecture	City Planning	Interior Design	Landscape Architecture	Totals
Full time academic staff	-	10	07	08	9.5	34.5
Instructors	-	-	-	02	-	02
Instructors / Adjunct Professors	-	04	07	01	-	12
Sessional Instructors	16	10	-	-	03	29
Totals	16	24	14	11	12.5	77.5

Undergraduate Students

287

Graduate Students

226

2008 / 09 Total Students

513

51

Landscape Architecture

Pre Masters	01
Masters Year 1	13
Masters Year 2	10
Practicum	27

69

Architecture

Masters Year 1	28
Masters Year 2 / Design Thesis	24
Masters Year 3, +	02
Pre Masters Year 1	07
Pre Masters Year 2	08

287

Environmental Design

ED2	105
ED3	
Architecture Option	50
Landscape and Urbanism Option	25
Interior Environment Option	17
ED4	
Architecture Option	55
Landscape and Urbanism Option	20
Interior Environment Option	15

60

City Planning

Masters Year 1	13
Masters Year 2	14
Practicum	33

46

Interior Design

Pre Masters	10
Masters Year 1	08
Masters Year 2	10
Practicum	18

Where Our Graduates Are



396

International

American Samoa	01	Italy	01
Antigua and Barbuda	01	Jamaica	01
Australia	16	Japan	07
Bahamas	02	Korea, North	01
Barbados	02	Korea, South	01
Bermuda	04	Macau	01
Botswana	01	Malaysia	11
Cayman Islands	02	Netherlands	03
China	08	New Zealand	01
Denmark	02	Portugal	01
Egypt	01	Qatar	02
England	20	Scotland	02
France	01	Singapore	02
Germany	03	Spain	01
Ghana	01	Taiwan	02
Greece	01	Thailand	02
Grenada	01	Trinidad and Tobago	01
Hong Kong	59	United Arab Emirates	04
India	02	United States of America	222
Indonesia	01	Zambia	01

3494

Canada

Alberta	598
British Columbia	670
Manitoba	1391
New Brunswick	15
Newfoundland / Labrador	02
Northwest Territories	30
Ontario	568
Prince Edward Island	02
Quebec	55
Saskatchewan	154
Yukon	05

Dean Search

Faculty of Architecture seeks new Dean

Doug Clark

The search for a new Dean is one of the most significant events in any Faculty. It is a rigorous process, with very transparent procedures and a tremendous amount of input from the community. However, in the end, it is a presidential advisory committee that makes the recommendation to the President.

The procedures as noted by University Policy are very clear, as noted below:

2.1 Search

2.1.1 When the position of the Dean or Director becomes vacant for any reason (including when a reappointment is not recommended), the President shall initiate a search for a Dean or Director by an Appointment Advisory Committee to advise the President on the appointment.

2.1.2 The President, having considered all the relevant factors, including current and prospective University budgets, may determine at the outset that the appointment be limited to persons holding a continuing full-time position within the University.

2.2 Membership of the Appointment Advisory Committee

2.2.1 Composition: The Appointment Advisory Committee for a Dean or Director shall be constituted by the President and shall consist of:

- (a) the Vice-President (Academic) and Provost, or delegate, as Chair of the Committee;
- (b) five (5) persons elected by, not necessarily from, the academic staff of the faculty, school or division from which the President shall select four (4) to serve on the Committee. If one of these members is unable to fulfill their term, the fifth person shall serve as an alternate;
- (c) one person elected by and from the support staff of the faculty, school or division;
- (d) one graduate student, elected or appointed by the Graduate Students Association
- (e) one undergraduate student elected or appointed by the relevant student organization..
- (f) normally up to four (4) persons appointed by the President to represent the broader interests of the University, including those of the professional and/or community interests.

2008, 2009 Committee Members

Chair

Dr. Joanne C. Keselman

Vice-President (Academic) and Provost

Faculty

Professor Nat Chard

Department of Architecture

Professor Lynn Chalmers

Department of Interior Design

Dr. Rae Bridgman

Department of City Planning

Dr. Norman Halden

Dean Clayton Riddell Faculty of Environment, Earth and Resources

Graduate Students

Adrian Benoit - President UMASS

Undergraduate Students

Dan Dufault

Administrative Staff

Robbin Watson

Professional and Community Interest

Mr. Stan Rhoda

President Manitoba Association of Architects

Dr. Jane Watkinson

Dean - Faculty of Kinesiology and Recreation Management

Dr. Emily Etcheverry

Director Faculty of Medicine Medical Rehabilitation

Dr. Mark Whitmore

Dean - Faculty of Science

A shortlist of candidates from Europe, United States and Canada was developed.

Interviews, public presentations and selected discussions with each of the candidates were conducted in February and March 2009, and while the process and the results of the deliberation are confidential, on April 28 Dr. Keselman advised the Faculty and Committee members that unfortunately the process had not been successful and that she would be moving to appoint an Acting Dean, effective July 1, 2009. She further noted that a new search for the position of Dean of Architecture would begin thereafter.

As such on June 2, 2009 Dr. Keselman confirmed that Dr. Richard Perron would serve as Acting Dean for the Faculty of Architecture for one year. In the meantime, a new committee for the Dean's search is being established.

Dr. Richard Perron has been connected and involved with the Faculty of Architecture since 1985, and has direct experience in all aspects of the School and the graduate and undergraduate programs. We welcome Richard, and thank him for assuming this necessary and responsible role on our behalf.

Dr. Richard Perron

PhD.	University of Victoria	2005
M.N.R.M	University of Manitoba	1984
B. Sc.	University of Winnipeg	1980



Department of Architecture

Nat Chard

The department has had a busy and rewarding year. It is the first time we have been able to run the whole of our new curriculum. This includes the former ED2 students (now ED3) electing into departments so that they now spend two rather than one year in a specialisation. As a result we have been overwhelmed with students but this year we now have selective entry that will limit the numbers to a more manageable level.

Another impact of the new curriculum is that our students are making stronger connections between design projects and building technology. This was the first year we have run comprehensive projects at three levels, ED4 /PM2 (final year undergraduate) and both master's levels. From this year the comprehensive requirement is taken out of the Design Thesis project to allow students to go for greater depth in their studies.

Despite this emphasis on raising the standard of technological teaching, or we hope partly because of this, we have also been pushing the standard of design work in the studios that now have a greater emphasis in our programs. The range of studios on offer means that there are areas of study that every student to get excited about.

The major event for us this year was the accreditation visit. The visiting team was very impressed with the progress the department has made and with the innovations in our curriculum. Their report is overwhelmingly positive and we are accredited for the next six years. In the build up to the visit we had a number of productive meetings with a committee from the Manitoba Association of Architects that was very helpful and productive that we hope will lead to further cooperation between the profession and the department.

We welcome two new faculty members. Assistant Professor Lisa Landrum joins us after working on her PhD at McGill.

Although a Canadian, she is registered as an architect in New York after working in practice for a number of years there. Lisa taught an engaging design studio last year and concentrates on History and Theory. Assistant Professor Lancelot Coar takes a full time position after working with us as a term teacher. He has continued his excellent work in Clearwater where his students built an extension to the town restaurant out of material from a barn they carefully demolished (or dissected). Lancelot also has degrees in engineering and teaches a very well regarded structures and construction course.

For the first time in ages the whole department has been together. All of our studios are now in the Architecture 2 building so that students can get a broader benefit from work going on in the other studios. Much of the work has benefited from the new laser cutters in the woodshop and we are looking forward to the new metal workshop that is being installed in the basement of JAR As with so many of the exciting developments in the faculty this new facility would not have been possible without the work of our Dean, David Witty, and our department sends him our very best wishes and gratitude as he steps down and moves out west.

Department of Interior Design

Dr. Mary Anne Beecher

New leadership arrived for the Interior Design Department when Dr. Mary Anne Beecher began her term as department head on July 1, 2008. Dr. Beecher brought 20 years of experience in interior design education to the department, teaching a course on the history of interior spaces and an Interior Design studio to undergraduates in the Interior Environments Option in addition to her administrative duties. Previously at the University of Oregon, Dr. Beecher's research area emphasizes material culture studies and design history with a special interest in the history of storage and its impact on architectural

space. She is also interested in documenting the history of twentieth century interior design practice and education. Because the University of Manitoba's Interior Design program is Canada's oldest and the only to offer a Master's of Interior Design degree, she hopes to develop a research project that will formally document its history and place its significant developments into the context of the evolution of interior design education in North America.

The Interior Design department has initiated several new opportunities for students to connect to the profession of interior design beyond Winnipeg. Students in the Interior Environments option of the Environmental Design program joined the second year Master's of Interior Design students for a trip to Toronto in fall 2008. Both groups of students took in the urban atmosphere while learning about particular types of environments that might inform their studio projects for the term. Master's students spent considerable time at IDEX analyzing the impact of sustainable design practices on the development of exhibition components while the undergraduates, who were working on a café design project, spent time in Toronto's food and market district, examining the behind-the-scenes needs of food service spaces.

In addition to this travel opportunity, the second year Master's students also benefited by receiving input on the exhibit designs they developed for local not-for-profit clients from professional interior designer Beth Harmon Vaughn. While serving as practice leader for Gensler's Phoenix office, Harmon Vaughn led the interior design of the new Phoenix Convention Center, so her insight into the realm of designing for temporary displays as well as for macro-scaled spaces added greatly to the students' knowledge.

Students in the first year of the Master's Program also turned their attention beyond the boundary of Winnipeg as they investigated potential designs for an Industrial Arts school for street children set in Cambodia. Led by Assistant Professor Kelley Beaverford, this group interfaced using Skype and Facebook with an Architects Without Borders-affiliated architectural firm in Paris to generate a potential plan for the campus and to develop the individual interior spaces for each of the trades taught at the facility.

Thanks largely to the efforts of Assistant Professor Shauna Mallory-Hill, the department continued to raise its profile in the realm of sustainable

interior design this year. In conjunction with Katherine Isaacs and Jac Comeau, Dr. Mallory-Hill's Sensory Technology course interfaced with the final Interior Environments Option studio to develop proposals for 29 commercial development alternatives for the Daylite and Glengarry Buildings in Winnipeg's Exchange District to demonstrate the potential usefulness of these threatened historic structures. The recently LEED-accredited Mallory-Hill is also offering an interdisciplinary course on sustainable design this year and she has spoken publically on the topic of "green design" at conferences and on CBC information radio.

Department of Landscape Architecture

Ted McLachlan

This past year has seen a lot of change in the Department of Landscape Architecture. In September the new Landscape + Urbanism option was started. This new two-year option is being co-taught with the Department of City Planning and will have a total of 66 students when it is fully phased in. This was the last year of the old Landscape Architecture option, which has served our Department very well over the 20 years. For those who are familiar with the studios in the Russell Building the entire studio space on the south side is now Landscape Architecture and Landscape + Urbanism. The synergy is fantastic. With the new option being phased in, the Department is taking this opportunity to put forward a major reform of the graduate curriculum. The highlights of these changes are: the creation of a three-year degree that integrates the Pre-Master's program into the Master's degree and a 52-week Master's degree option which provides the opportunity for B. L. Arch. and B.E.D. L+U option graduates to complete their Master's in a shorter more intensive period of study. We are also proposing an internship option for students that want to gain professional office exposure while studying for their degree.

This past summer we welcomed Anna Thurmayr to our department. Anna is a Landscape Architect from Germany (now a member of the MALA) and takes up the position of Assistant Professor in our Department that was previously held by Charlie Thomsen who retired last year. Anna will be teaching the Digital Drawing Workshop, Design Studio and the new Construction Materials course. This appointment brings our department faculty to nine full-time positions and one contract position.

Over the past year there have been 11 students graduate. They are: Shannon Baxter - "Reinterpreting the Scars: Engaging with the Remnants of Post-Extractive Processes" her advisor was Professor Jean Trottier; Ian Legge - "Tangible and Affective Landscape Desires: The Suburban Yard" his advisor was Professor Ted McLachlan; Alaina Prokopchuk - "From Patent—To(wards) Prototype" her advisor was Dr. Richard Perron; Kara McDowell - "The Resonance of Place" her advisor was Dr. Marcella Eaton; Micheal Williamson - "unplanned wanderings: and the discovery of a pier" his advisor was Dr. Richard Perron; Amanda Yakichuk - "fractured atmospheres: an Exploration into the Exactness of the World" her advisor was Dr. Marcella Eaton; Louella Yambot "Project X: Integrating an elevated LRT structure in Manila's Streetscape" her advisor was Professor Jean Trottier, David Bodnarchuk - "North End Revitalization: Landscape Architecture as a Means of Building Social Capital" his advisor was Professor Jean Trottier; Christine Wilson-McLeod "Nested: Playing with Autism" her advisor was Professor Jean Trottier, Heidi Hosein "Dreamed Cities" her advisor was Dr. Marcella Eaton; and Andrew Harvey "Montréal-nord Public Market: Catalyst for Social Change" his advisor was Professor Jean Trottier.

This fall we were very pleased to give the first Manitoba Association of Landscape Architects (MALA) Fellowship in Landscape Architecture to Meaghan Hunter. This award set up by the generous donation from the MALA is permanently endowed and will be awarded every year.

This year over 30 students in Landscape Architecture were recognized at the fall + spring award ceremonies. In addition, the following students were recognized: 2008 MALA Book Awards - ED3 Cameron Bradshaw, PM Jennifer Wall, M1 Leanne Muir, M2 Jay Hallett; MALA Gold Medal 2008 - Andrea Kennedy; CSLA

Student Award 2008- Andrea Kennedy; Women's Health Research Foundation of Canada Graduate Scholarship - Jennifer Wall.

It is with great sadness that we note the untimely death of one of our recent graduates. Alison Scott, who won the Landscape Architecture Thesis Award, passed away after a lengthy illness in November. Alison will be dearly missed by all of us that were so fortunate to have known her. The Department, friends and family have set up a bursary in her name, the Alison Scott Bursary. Donations can be made through the Partners Program or the University.

Department of City Planning

Dr. Richard Milgrom

In July 2008, Dr. Ian Wight stepped down as head of the City Planning with thanks from the department. He spent this year on a well-deserved leave, pursuing his academic interests on Glasgow. In the fall, Dean Dave Witty stepped in as acting head, until Dr. Richard Milgrom returned from his research leave to take on the position in January 2009. Dr. Milgrom also received tenure and promotion to Associate Professor this year, and Dr. Sheri Blake was promoted to full professor.

Students in City Planning participated in three studios that all engaged different communities in Winnipeg and Manitoba. In the term, Dr. Blake led a group of M1 students through a planning process with the communities in Winnipeg's South Point Douglas neighbourhood. In the winter, under the guidance of recent City Planning graduate Marcella Poirier, the same group of students worked with the community of St.-Pierre-Jolys, MB, south of Winnipeg, to explore options for the village's expansion in the near future. The M2 students travelled north in the fall to work with the Norway House Cree Nation at the top of Lake Winnipeg. This cross-cultural studio, led by a team that included Dean Witty, Lisa Hardess from the Centre for Indigenous Environmental Resources and adjunct professor Mike Robertson, developed a

recreation plan for the community.

Studio activities brought in additional funding this year from both the City of Winnipeg and the Province of Manitoba and some of this money was used to pay students Andrei Friesen and Jacob Edenloff (M1) to continue with work started in studios as internships.

The Department also continued to have success finding external funding for students related to research projects. In addition to assisting the Faculty with research projects, in many cases this work is also contributing to the students' Major Degree Projects. For example, Dr. Ian Skelton secured funding for Richard Mahé (M2 – mental health and housing) and Lauren Lange (M1 – Aboriginal seniors' housing) through the Manitoba Research Alliance. Becky Raddatz (M2) has funding to explore the issue of active aging through a Community University Research Alliance (CURA) focussed on "age-friendly" communities. Robyn Webb (M2) also has funding from a CURA, this one investigating social economies, to conduct her research about the support municipalities could provide to community economic development initiatives.

Faculty and students were actively engaged in a range of conferences over the summer of 2008. In July, Dr. Wight served as the program chair for the Canadian Institute of Planners Conference in Winnipeg, and students took advantage of opportunities to volunteer. In the same month, the Department hosted the Planners Network Conference, Planning in Challenging Climates. The organizing committee included Dr. Milgrom, adjunct professor Molly Johnson, and M2 student Sarah Cooper. While PN2008 provided more volunteer opportunities, a number of students assisted with planning mobile workshops and presented work at the conference.

Eight M1 and M2 students also attended the Canadian Association of Planning Students Conference in Montreal, January 2009 and made presentations about their research or studio work. Of particular note was Richard Mahé's presentation about a "green infrastructure" project that he co-authored with fellow M2 students Kaeley Wiseman and Chris Baker. The project was completed under the guidance of Dr. David van Vliet, and was later announced as one of four winners of the national TD Canada Trust Go Green Challenge student competition. It was also published in Plan Canada.

Cultural Events

Brandy O'Reilly

The 2008/09 year was an exciting one for Cultural Events. The Cultural Events Committee hosted an extensive list of impressive speakers and offered its first annual Atmosphere symposium.

Matthias Schuler of Transsolar presented the Jeffery Cook Memorial Lecture. He discussed Transsolar's work on the Manitoba Hydro Building and a number of the building and city projects that illustrate his practices inventive methods to seek out more from the earth's dwindling resources.

As part of the Waisman Lectureship fund, Vivian Manase, the Past President of the RAIC, presented her work within First Nations communities. Glen Murray, Winnipeg's former mayor and the current President and CEO of the Canadian Urban Institute, made an impassioned plea for developing the city's cultural realm.

Other speakers included Susan Herrington who discussed landscape and memory, Ken Reardon who delivered an inspirational tale of a resident-led planning and development post-Katrina in New Orleans, and Marcos Cruz and Mark Smout who showed their recent work along with some student projects.

In collaboration with their Gallery exhibitions Florian Koehl discussed his work with Anna von Gwinner designing 10 houses within one house, Jeff Funnell's lecture included some uncanny photographs and video work and Hannes Larrusson presented "Context & Aesthetics of Vernacular Building in Iceland."

The Food for Thought portion included lectures from the Faculty's own Dr. Mary Anne Beecher, Ted McLachlan, Patrick Harrop and visiting academic Alan Freeman.

The Cultural Events team is grateful to the endowment fund for their continued support each year. They are especially grateful to the Manitoba Association of Architects (MAA) whose help allowed them to fly Mark Smout to Winnipeg on short notice.

Faculty Research and Creative Work

Dr. Cynthia Karpan

Research and creative work produced by professors in the Faculty of Architecture continues to be engaging and diverse. Faculty members utilize a wide range of research methodologies and creative processes to delve into important topics in areas related to education, history, public policy, service learning, technology, and theory. Their work has resulted in a range of products from gallery exhibitions to practical solutions for industry.

In the Department of Architecture, professors are currently focused on research and creative work related to flexible wood structures, architect figures in early dramatic literature, architectural theory, fabric-formed concrete, indeterminate architecture, and flood architecture.

Professors in the Department of City Planning are undertaking research in community design practice, community design centers, community participatory design, homelessness, innovative housing for people who are homeless, social housing and policy, urban form, sustainable community planning and design, central city revitalization, place-making, and Aboriginal design and planning.

Current research and creative work in the Department of Interior Design focuses on intercultural effectiveness in architectural education, history of interior design, photography in relation to interior design, cultural analysis and theory, interior design programming, technologies associated with 'luminescence' and potentials in the design of luminous environment, Cambodian vernacular architecture, Islamic architecture, performance of the

built environment in relation to human requirements, and workplace design.

Landscape Architecture professors are engaged in research and creative work related to responsive art and design, reciprocal revelations of landscapes and sound, ecosystem phenomena, the interaction of theory and design, landscape architecture theory and education, landscape urbanism, urban parks, and roadside memorials in rural and urban landscapes.

In the past few years, professors within the Faculty have received in excess of \$375,000 from numerous organizations and granting agencies including the Social Sciences and Humanities Research Council (SSHRC) and the Canadian Institutes of Health Research (CIHR).

Research from the Faculty has been disseminated in a variety of formats (e.g., invited lectures, conference presentations, films and DVDs, articles for magazines and journals, gallery presentations, books, etc.), and at a variety of levels including locally, nationally, and internationally. Our professors have disseminated their work across Canada and the US as well as Denmark, Germany, Qatar, and Turkey.

Dead on Arrival

*Drawings, Objects,
Inhabitation,
Landscapes, Cities,
Atmospheres...*

Eduardo Aquino

We are pleased to announce a new publication from the Faculty of Architecture. This new journal, *Dead on Arrival* presents work by professors and students in dialogue with contributors that we have engaged mostly through our rich cultural events initiatives. *Dead on Arrival* expands on conversations within and beyond the Faculty of Architecture to enhance our own networks of ideas and experiences, diminishing the distances between us and the outside world. Much is said and felt about our "Winnipeg condition," one deeply rooted in the reality

of the land and its geography. The isolation inspires the creation of our own myths, but it also refers to an increasing necessity to partake in our own constructions and reflections, to disseminate our findings and to expose our own dialectics to a larger network.

Dead on Arrival is an open work, an opera aperta in Umberto Eco's sense, where the goal is to expose a landscape of shifting fields, rather than attempting to construct a linear and closed string of knowledge. The journal establishes a critical provocation, a discussion between projects that have relevance beyond the Faculty, inserted in a larger critical context. *Dead on Arrival* proposes a zone of criticality between existing academic scholarly journals and popular design magazines, reaching out to students, educators, professionals, and readerships beyond academia. In this premier issue we explore ideas around drawing, inhabitation, cities, ending with a question: How do we create an atmosphere?

Dead on Arrival contributors: Atelier Bow-Wow, Michael Banman, Mary Anne Beecher, Peter Cook, Bruce Duggan, Marcella Eaton, Neil Forrest, David Grahame Shane, Momoyo Kaijima, Florian Koehl, Perry Kulper, Andrew Lewthwaite, Kara McDowell, Matthew McFetrick, Paulo Mendes da Rocha, Elyssa Stelman, Dietmar Straub, Natalija Subotincic, Anna Thurmayer, Yoshiharu Tsukamoto, Michael Webb, and Mark West.

For more information please contact Professor Eduardo Aquino, (204) 474-7177 or email: aquinoe@cc.umanitoba.ca.

Annual Student Exhibition

+ Celebration

Doug Clark

On Friday, April 24 at 7:00 pm, DJ Mike B adjusted the sound system in Centre Space, Shelly Goodacre activated the popcorn machine in the Architecture 2 building foyer and the landscape architects rested beside the courtyard "beer garden" as hundreds

of students, parents, faculty and guests poured through the Architecture complex and took in the exhibits and student presentations from all five of the departments and programs in the Faculty of Architecture.

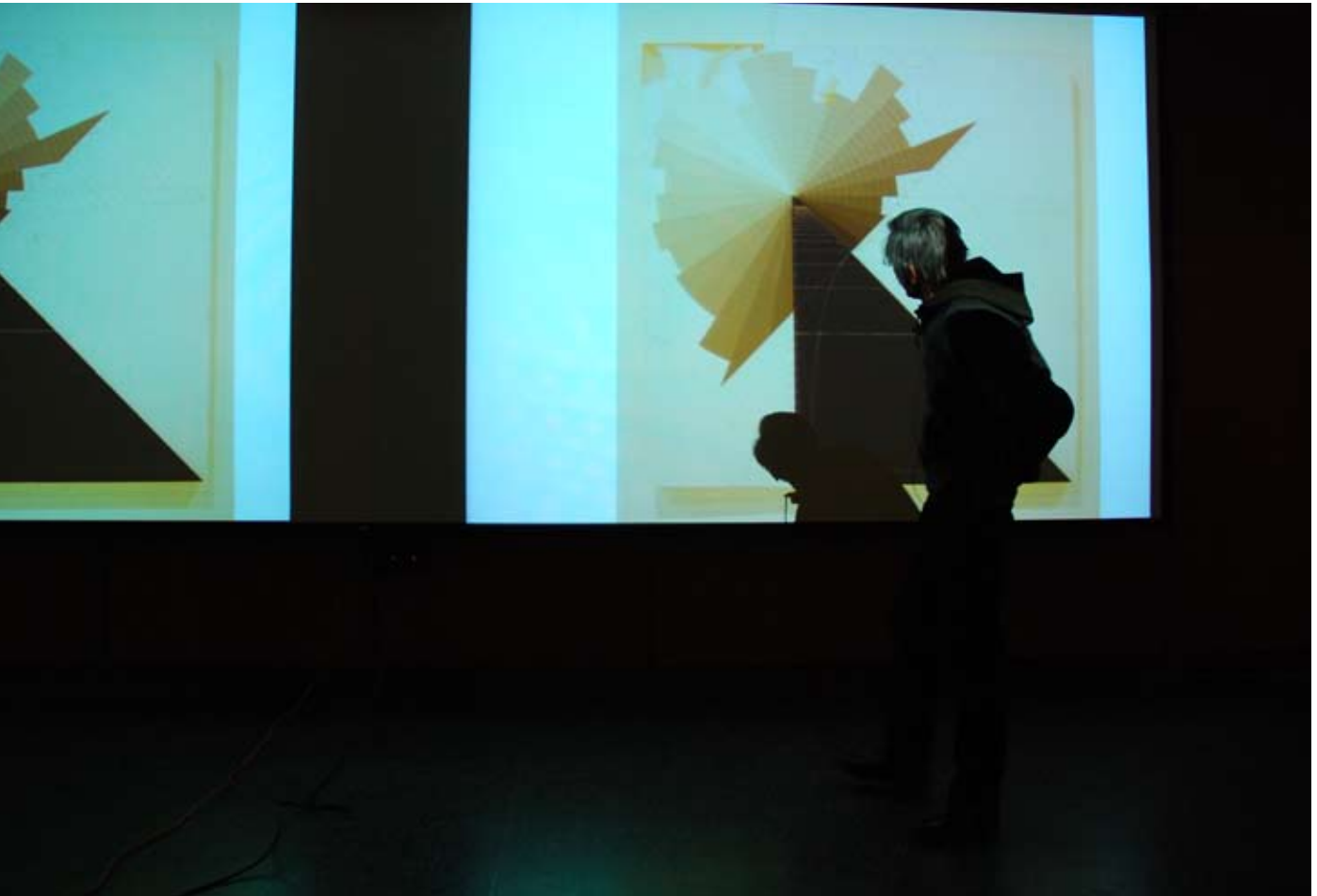
The work of over 500 students was displayed in classrooms, studio spaces, hallways, entrance foyers and lounges. Descriptions of the assignments were posted, and both students and professors were on hand to meet and explain the nature of the work to the hundreds of visitors to the Faculty. After eight months of rigorous exploratory work by five different departments and programs, it is almost too much material to comprehend in just one evening. As such, the Faculty and the displays remained available on April 27 and 28 for school groups and others to visit and tour at a more leisurely pace.

The University of Manitoba Special Functions Department provided refreshments from three bar areas while servers moved through the crowds distributing food to the excited and the weary.

The year end exhibition was brought together by the five student associations University of Manitoba Architectural Student Society (UMASS), Student Architectural Society (SAS), Interior Design Association of Students (IDeAS), Landscape Architecture Students Association (LASA) and University of Manitoba Association of Planning Students (UMAPS), The Dean's office and the Partner's Program.

We would like to extend a special thank you to EQ3 for providing the furniture which was assembled in Centre Space to create a lounge and also for the display area which featured the prototypes of the EQ3 Student design competition. As students relaxed in the lounge, ED2 students walked the catwalk during three designated time slots and displayed some of the results of their "garmenture" design project.

We invite all of you to next year's Annual exhibition which will take place Friday, April 23, 2010.



Atmosphere

Dr. Marcella Eaton

What does atmosphere have to do with design? As designers, as educators, can we answer this question? We ask students, 'just what is it that you want to do?' and they answer with determination, passion, angst, frustration, confidence, clarity and with confusion ... they want to create spaces and places that people will use and love. But, how do we do that? Amongst students, colleagues, peers within local and global networks there is much talking around what it is that we want to do. The scientific ground of traditional research grant work can help us discover the physical world around us, and how to safely build things better. The social sciences can help us to understand how we act as a collective and individually in society. Art practices can be examined to encourage us to question everything. But, as environmental designers there is most often a desire to create spaces and places that lift the human spirit, that enrich the experience of individuals on a daily basis or even occasionally, but how do we do that? How do we create an

atmosphere? Can we? Is it by simply piecing aspects of knowledge together to design environments that are deemed successful? Does a successful environment necessarily have atmosphere? How do we teach students to understand atmosphere, or can we? Do we talk about it or do we blush in a quiet awkwardness that emphasizes the difficulty of this extraordinarily important goal of our work?

Atmosphere is the consequence of the projects we make as designers of cities, landscapes, architecture and interiors. Atmosphere is hard to grasp, and even harder to talk about - yet the production of atmosphere, intended or not, is one of our most apparent contributions to the world. It is something that lingers after the program has changed or the client has left. Though palpable, atmosphere resists registration. So fragile and dependent on the world around, atmosphere is also susceptible to our individual perception. It is not something that can be read or interpreted. It simply is.

We have an unwritten and often unspoken aim that there is equality between all of the disciplines in the Faculty of Architecture. The subject of atmosphere was chosen as an idea because it is a common intention amongst city planning, landscape architecture, interior design and architecture. There is a sense of wholeness in projects that exude atmosphere; they have completeness in themselves, which is their intrinsic justification. The whole point is that no discipline has a unique ownership of the intention - atmosphere is uniting.

ATMOSPHERE is a yearly symposium in the Faculty to be held every February. As academics we often travel to different universities and cities to share ideas with others. This is an important part of our responsibilities. However, until ATMOSPHERE we did not host an event like this in the Faculty. The Cultural Events Committee believed that the time had come to create an event with a group of six invited speakers, and ten peer-reviewed lecturers for the first symposium that was held in February 2009. We encouraged people from the disciplines represented in the Faculty to submit abstracts - and to attend, as well as those outside of these traditional environmental design disciplines. The possible themes were: engagement, how we choose to accept the world, the representation of atmosphere and condition, the physical manufacture of atmosphere, the particularity of light, romanticism and atmosphere, and collective atmosphere.

Some have suggested that February in Winnipeg is a less than ideal time to invite others to the Faculty. Winnipeg is in the centre of the North American continent and enjoys an extreme continental climate, which in February has an atmosphere that most cities do not have. The quality of light, the freshness of the air, and the extreme temperatures create an environment that is exhilarating. We believe that participants from the event enjoyed this unique situation and we look forward to sharing this experience with others in the future.

Atmosphere was planned over a three-day period beginning with a Thursday evening registration and a lecture by one of our keynote speakers. Michael Webb, member of the Archigram Group, discussed the drawings associated with an exhibition in Gallery Arch. 2. The talk titled 'Some quirks associated with conventional perspective projection' explored 'certain seeming non sequiturs associated with the mathematics of perspective projection'. The Royal Regatta in Henley-on-Thames was the event used to test these ideas.

There was one stream of speakers throughout the next two days. 'Interiors, Wilderness, Weather Flets' was the title of Julieanna Preston's lecture. A senior research academic at Victoria University of Wellington, New Zealand, she discussed 'the relation of wilderness inclusive of all its connotations to awe, wonder, fear and chaos, and that of interiors as a site of spatial retreat and protective shelter'. 'mapping chaos' was the topic of contemporary photographer Alain Païement, who works out of Montreal. The presentation showed the movement of Païement's work through time, to his most recent work of photo-based mappings of architectural spaces. He started by 'looking at the clouds and liquid territories that we are working in painting, not only seen as figural motifs but rather as a process of structuring the uncircumscribed, and therefore, as a process exploring variations between chaos and order'. Jan Konings, one of the founding designers of Droog Design talked about 'Infill Attractions', including the Hotel Transvaal in Amsterdam. On the final day of the symposium Perry Kulper, architect and Associate Professor at the University of Michigan discussed '3 Worlds'. He used the lens of atmosphere to reveal 'Constructing a World, Teaching World and Production World', as the foundations for the thoughts and images of his work. Guy Maddin the final invited speaker was unfortunately too ill to present

his talk 'Can You Cut it with a Knife?'

The peer-reviewed paper presentation system is used throughout the world at conferences and symposiums. It is an important part of the validation process of academic work and it gives weight to scholar's work when it is being reviewed in, amongst other things, the tenure and promotion process that academics must move through. We believe that it also provides a tremendous opportunity for our students to participate both actively and passively. There were 10 papers accepted this year. The range of speakers from Austria, Australia, Canada, and New Zealand, and topics was a supplement to students design education. Our hope is that this event will become a highlight of the winter term.

The output from ATMOSPHERE is the event itself and the Conference papers, which were available prior to the Symposium. However, every five years we propose to collect the most memorable papers and invite authors to expand or elaborate their work to be included in a 'reader' that would be published by an international publishing house.

The intent of ATMOSPHERE is to also provide a venue for students to hear, to meet participants with perspectives perhaps different from those that they are normally exposed to. We hope that the excitement of this event will also encourage students to submit their own work to this, and other symposiums / conferences. We hope that the success of the event will help to further develop a sense of pride and belonging to this Faculty.

ATMOSPHERE provides a venue for local practitioners to see more of what is going on in the Faculty and in the global context that the speakers will be drawn from. We hope to attract more practitioners, academics and students nationally and internationally as participants. It also has value for the purpose of continuing professional development for practitioners. This event provides a window into what we do to other members of the University of Manitoba community. ATMOSPHERE 2010 will be held from February 4 - 6. Please go to www.atmos.ca for further information.



Teaching LEED

Faculty of Architecture Offers First Post-Secondary LEED Course in Canada

Dr. Shauna Mallory-Hill

During the spring term Dr. Shauna Mallory-Hill, a professor in the Faculty of Architecture, along with Rodney McDonald, former Chair of the Manitoba Chapter of the Green Building Council, delivered a course entitled "Building Green with LEED®". This course is the first ever post-secondary LEED® course sanctioned by the Canada Green Building Council (CaGBC) and represents a significant break-through in bringing the LEED process to students. Only LEED® Accredited Professionals qualify to teach the course. The University of Manitoba was one of only five institutions in Canada initially selected to deliver the course.

The 3.0 credit hour seminar course, offered two nights a week over May-June and provided students with a working knowledge of the Canada Green Building Council's (CaGBC) LEED® Canada for New Construction Rating System 1.0 (LEED®-NC). Key topic areas covered included: sustainable site development, water savings, energy efficiency, materials selection, and

indoor environmental quality.

The 12 graduate students enrolled in the inaugural course offering represented all four disciplines within the Faculty of Architecture: City Planning, Architecture, Interior Design and Landscape Architecture. As part of the course, students worked in interdisciplinary "integrated design teams" to explore how to make an existing green building, even greener. "My favourite part of the course was being able to work with students from all of the other departments, that hardly ever happens," remarked student Anna Westlund (Interior Design).

Other highlights of the course included a lecture and guided tour through the newly completed LEED® gold-targeted West-End Cultural Centre by local sustainability expert, Gerry Humphreys of Milestone Project Management. Mr. Humphreys is also well known for his work on the Mountain Equipment Co-op building, the first LEED® building in Winnipeg. Another guest lecturer, Lisa Hardess, Manager of Building

Sustainable Communities at the Centre for Indigenous Environmental Resources, provided insight on community design and the newest LEED rating system, LEED® Canada ND (Neighbourhood Developments), expected to be released in Canada in 2010.

LEED®, which stands for Leadership in Energy and Environmental Design, is a voluntary third-party building rating system that recognizes buildings that incorporate sustainable design and construction strategies, high-performance systems and materials that lead to a reduced environmental impact. It is the most widely used rating system in North America, and has become the definitive benchmark for what constitutes a "green building".

Dr. Mallory-Hill plans to offer the course again in the Spring of 2010 with the goal of attracting students from across the campus. "Sustainable design is such a tough challenge, requiring the understanding of diverse disciplines. Offering the course in the Spring session enables us to provide the opportunity for students from a variety of academic disciplines such as design, planning, engineering, ecology and business to learn and exchange ideas with each other."

For more information please contact
S_Mallory-Hill@umanitoba.ca.

CAPS

Canadian Association of Planning Students

Vicky Reaney and Sarah Cooper

The University of Manitoba Department of City Planning made quite a showing at the 25th annual Canadian Association of Planning Students conference this year. Along with Professor Richard Milgrom, the City Planning Department Head, nine students attended and presented. The Conference was held in Montréal, QC, from January 28-31, 2009. The theme was Micro to Macro and was organized by students from all four planning schools in Montréal: Concordia, McGill, Université de Montréal and Université de Québec. Over 175

students attended to hear presentations, lectures and mobile workshops in both English and French. The Partners Program provided funding to support the attendance of University of Manitoba students.

At the Conference, Sarah Cooper a second-year master student (M2) presented research on municipal approaches to affordable housing provision, undertaken as part of a summer internship at the Canadian Centre for Policy Alternatives. Richard Mahé, M2, presented "Green Infrastructure Frameworks: A vision for urban connective tissues". This project was a proposal to retrofit Winnipeg's underutilized spaces and infrastructure corridors into a city-wide network of green infrastructure. The project was undertaken by a team of University of Manitoba City Planning Students for the TD Bank sponsored Go Green Challenge. Vicky Reaney, M2, presented her thesis

topic on opportunities and constraints for Transit Oriented Development around the proposed Downtown South Winnipeg Bus Rapid Transit corridor. Two teams of first-year students also presented on topics inspired by planning theory and the first studio, on social planning and participatory processes in inner-city Winnipeg. Brock Feenstra, Jacob Edenloff and Waleed Albakry presented "Participatory Planning Inner-City Winnipeg". Andrei Friesen, Jeff Pratte and John Paul Harris presented "Contravening Planning Paradigms in Winnipeg's South Point Douglas".

The conference was rich in educational and networking potential, as attendees met professionals and students from across Québec and Canada. It provided an opportunity for students to inspire each other, and to be inspired by planning ideas from different contexts, as well as by Montréal itself.

Architecture & Fine Arts Library

Mary Lochhead

A highlight of the past year was working with the Interior Design students in Dr. Cynthia Karpan's third year studio on a re-invention of the main floor of the Architecture/Fine Arts Library. The students were challenged to create new and improved spaces for people - library users and library staff and to reflect the increased role of digital resources within the library and research environment. Some incredible ideas came out of this project which we only wish we could implement on a big scale. However, we are attempting to adopt some of the design solutions towards improving the user's experience and reinforcing the library as a destination within the Faculty of Architecture. For example, as a way of providing some quiet and private study space on the main floor we will be adding individual study carrels in a low-traffic area. The map collection will be relocated to the basement of the library to create space for casual and comfortable seating; a place for students to browse the new journals, chat with their colleagues or simply enjoy the surroundings. Our next challenge will be finding the funding or support to acquire this type of seating and enhance the library experience.

Some Trends and Initiatives

Our library continues to have the second highest circulation rate after the Elizabeth Dafoe Library. Our students and faculty are great library users! And while our print resources are always in high demand, our digital offerings are growing in scale and popularity. The Slide Collection's 'Scan-on-Demand' service doubled in popularity this past year and over 1,255 slides were scanned at the request of students and faculty for use within copyright guidelines. Metadata for over 1,500 slides has been created as part of our Gardens and Landscapes initiative. Scanning of these slides will begin this summer with a tentative launch date of this new digital collection sometime in the

fall of 2009. The Winnipeg Building Index <http://wbi.lib.umanitoba.ca/WinnipegBuildings/> continues to be one of the most popular databases in our library. Over 700 new images were added to the WBI this year and an invitation has been extended to members of the Manitoba Association of Architects to contribute images and information about their work in Winnipeg to this database.

Challenges

Tough economic times are faced by all including the Libraries. We will continue to assess what we do and listen to our users to make the best use of our resources and to contribute to the success of the Faculty of Architecture. Thank you to all for your continuing support of the Architecture/Fine Arts Library at the University of Manitoba.

For more information contact
Mary_Lochhead@umanitoba.ca

CADLab

Chris Leigh

The past year has seen some major changes in CADLab. We've been joined by Sean Watson, our new full time printing and equipment specialist. His dedication to quality; friendly demeanor; and helpfulness to students and staff alike has made the past year a very successful one for us.

With the addition of Sean, our main office has moved down the hall to Room 124 Architecture 2, and has been completely renovated. The new space is tailored to providing faster service to a higher volume of students than we could previously accommodate. Our coordinator and technician have been moved as well, and now reside in Room 120 Architecture 2.

From the main office we are able to provide large format printing for staff and students. We can print in colour or black and white, on large sheets up to 42" wide. Our pricing remains substantially lower than commercial shops. Wide-format colour scanning is provided at no charge.

Several Nikon D80 digital SLR cameras and accessories are available for loan from the CADLab office. We've recently acquired high-definition flash-based video cameras, which will be available for general-purpose use by the end of the summer.

To compliment the new cameras,

CADLab is preparing a dedicated space for professional video editing. The new space will be located in Room 111A Architecture 2 and will contain two high-end computer workstations with ample recording space and the latest in digital editing software. The workstations will be outfitted with equipment to capture and manipulate video from a variety of formats, ranging from old VHS tapes to modern HD sources. We are expecting the room to be open by September 2009.

Our main computer lab will be reduced in size over the summer. This is in response to reduced demand for a dedicated computer lab, as more and more students use their own laptops exclusively. The resized lab will have space for 19 workstations and an instructor's station. We will continue to provide the same selection of software in the smaller lab.

As part of this reorganization, the flatbed scanners and two laser printers will be moved into Room 122 Architecture 2, immediately adjacent to the main office. The other two laser printers have been moved to the back of the computer lab. Tony Wong's office will be moved into Room 121A.

Preliminary steps are being taken to add additional networked laser printers to our system. We intend to add four laser printers to the Russell building studio, just outside the student lounge. We are also planning to add two printers to the ED studio in the Education building. This will provide both locations with accessible high quality colour and black & white printers. These printers will run off of our iPrint pay-for-print system. Credits can be purchased at the CADLab office. We are hoping to have all six printers installed and ready to use by the fall.

As the use of building automation and electronics increases, students need exposure to the electronics used in our increasingly computerized world. To support students, a Physical Computing workshop has been created in Architecture 2, Rm 130. The room will have a selection of hand tools and electronics test equipment such as multimeters, soldering stations, and oscilloscopes. To aid in the construction of projects, the room will have a small fume hood and soldering stations with fume extraction. The room is scheduled to be completed for the 2009 fall term. Further information will be made prior to the start of the fall term.

For more information contact
leighc@cc.umanitoba.ca

Product Catalogue Collection

Laney Stewart

The Product Catalogue Collection (PCC) is a materials resource library within the Faculty of Architecture, managed by Laney Stewart, BID, serving the following groups:

Students in all disciplines in the Faculty of Architecture, Faculty, Local Design Community.

We provide the students with their first experience into the specification realm, through access to a tremendous amount of samples and technical data. The Product Catalogue Collection is also an excellent resource to the local design community as we have a wide array of information available to all. We are able to acquire product that may not be readily available on the Winnipeg market as well as we store an abundance of information that firms may not have the physical capacity to house and maintain.

A new initiative that was undertaken this year stems from our "Cage". The "Cage" is an area that students utilize for project purposes that provides discontinued and duplicate samples that are donated by local design firms as well as manufacturers. This new initiative is called Product Recollection. What we try to do with Product Recollection is collect samples beyond what our students can use and distribute them to local groups, such as daycares, schools, art programs etc. Our first recipient this year was an inner city art program for inner city youth. What this program does is take 200 children from the inner city and let them create fantastic works of art in a two day long art symposium. So our materials were put to good use this year. If you are interested in donating to this program you can contact the PCC and we will either connect you with a group in need and/or depending on how full we are we will take your discontinued and duplicate samples and store them until we can find a group in need. We encourage all designers to please be cognisant of the amount of landfill filled up with tiny little

product samples.

Throughout the year the PCC also arranges for product knowledge Lunch and Learns. These are well attended by students as it is usually their first exposure to this type of educational seminar. The manufacturers, distributors and representatives that we work with are very generous with their time and product literature donations. During the year we also offer a sample ordering services to students for project purposes and again, to our delight, our requests are usually fulfilled supplying upwards of 1500+ samples per semester to the students.

If you have any questions about the Product Catalogue Collection please feel free to contact us:

Laney Stewart - Manager

204-474-9247

stewart7@cc.umanitoba.ca

Hours are available online:

umanitoba.ca/faculties/architecture/facilities/152.htm

in concert with occupant surveys and observational studies, this data is used to provide valuable insight on the impact of built environments on human health and productivity and inform future innovations in design.

The new equipment will add to the 13 lighting meters that have been recently acquired with the generous support from the Department of Interior Design and the local Chapter of Illuminating Engineering Society of North America IESNA. It is anticipated that the equipment will initially be tested out within the context of research studies, with the goal of finding ways to deploy the equipment in the classroom and ultimately to individual students in a to-be-determined check-out program through the CADLab. It is anticipated that the lighting meters, which are relatively durable, will be available for classroom use as soon as the upcoming fall (2009).

For more information, please contact Dr. Shauna Mallory-Hill at s_mallory-hill@umanitoba.ca

Green is Good

Faculty to acquire state-of-the-art IEQ Measuring Equipment

Dr. Shauna Mallory Hill

In April, Dr. Shauna Mallory-Hill was provided with \$160,000 in funding from the Faculty of Architecture Student Technical Fee Committee to acquire state-of-the art equipment to monitor and help evaluate the indoor environmental quality (IEQ) of buildings. The acquisition of the equipment is intended to build capacity within the Faculty to become a centre of excellence in building performance evaluation in Western Canada, particularly in the area of high performance "green building" design.

The equipment, used in field studies, is mounted on a portable cart. It consists of several components that are then deployed to capture information about the visual, thermal, air and acoustical conditions. The components can be separated to look at any of these conditions independently. Used

Landscape Architecture Design

Build Studio 2009

Kelly Wojnarski &
Jean Trottier, Assistant Professor

In its ongoing collaboration with the Town of Minnedosa, the Department of Landscape Architecture used its spring 2009 studio to develop a master plan for the Town's recreational trails and build the first in a series of proposed fitness/leisure stations. This endeavour served as context to explore the influence of materials, detailing, and craftsmanship on the design process and the benefits of model-making in idea development and communication.

Working under the supervision of Professor Jean Trottier and woodshop instructor Keith Millan the class progressed from small to full-scale models prior to producing measured drawings. This exploration helped shift the focus between the different scales at which formal and structural possibilities must come together. The resulting proposition is inspired by the marsh reeds and rolling landscape that surrounds the site: a structural web of laminated ribs supports an undulating cedar skin that begins as a sit-up platform, morphs into an oversized lounge chair, and culminates in a pointed canopy framing views of the Minnedosa hills.

Construction of the structure made extensive use of the Russell woodshop facilities. Groups of two to three students worked simultaneously on various sections, which were then transported to the site for assembly. Following three days of intense on-site work the first fitness station was officially opened on June 12th, 2009. The master plan, construction drawings, and typical details compiled by the students are currently being used by the Town of Minnedosa to complete the remaining fitness trail amenities.

The structure has since become a favorite place in town for lovers to linger at sunset; not quite its original intended use but a fitting tribute to the moving power of great design.



Build Studio 2009

LASA
*Landscape
Architecture Student
Association*
Kathryn Voroney

This year the Landscape Architecture Student Association hosted a series of events; from symposiums and barbeques to guest speakers. The most anticipated event was MALA night, where student work was celebrated with an exhibition and photo competition. Congratulations to everyone and thank-you for helping to make this a successful year.

18

Warehouse Journal

The eighteenth annual non-profit student-initiated publication of design work from the Faculty of Architecture at the University of Manitoba.

To be released fall 2009

To purchase a book, or for more information contact:

Warehouse Journal
319 J.A. Russell Building
Faculty of Architecture
University of Manitoba
R3T 2N2

warehousejournal@gmail.com





IDeAS

The Interior Design Association of Students

Janine Shwaluk

The Interior Design Association of Students (IDeAS) serves to maintain, encourage, and promote an enthusiastic and amenable environment for students of interior design while exhibiting thoughtful representation and assertive engagement of faculty, professionals, and the greater community.

This year, our 12 council members worked together to organize various social events and activities which provided opportunities for interior design students to interact with one another and with the greater faculty. To kick off the school year, IDeAS hosted the 'Moving In' Symposium held in the Courtyard of the Faculty of Architecture building. This social interchange created a welcoming environment for students to meet and reconnect with one another, setting the tone for the year to come.

Food, sometimes forgotten when busy completing a deadline, provided inspiration for the next initiative brought forth by the IDeAS council. The first semi-annual breakfast sandwich sale commenced in November, 2008, a great success in which the smell of bacon drew in both students

and faculty members. As a fundraising event, the breakfast sandwich sale was held once again during Ditchball serving both the players and spectators of the sporting event.

In January, along with the Partners Program and the Professional Interior Design Institute of Manitoba (PIDIM), IDeAS hosted our third annual Meet and Greet, an evening devoted to interior design through the union of students, educators, and professionals. The event showcased the diverse skill set of the undergraduate and master's students through an exhibition of their work. Food, wine, and casual seating arrangements contributed to the overall success of the event, facilitating relationships between future interior design graduates and the local design community.

Committed to serving and addressing ongoing, day-to-day student needs, IDeAS focused the remainder of the year's activities on encouraging health and wellness within our busy student lifestyle. The 'Body Break' Symposium (with Hal Johnson and Joanne McLeod) encouraged students to be active both

physically and socially. This was followed by the organization of Centre Space Yoga, in which faculty, administration staff, and students filled the space for a one-hour mind-body experience.

Throughout the year, the IDeAS council represented the interior design student body at various faculty meetings, in dealings with the Faculty of Graduate Studies, and on the PIDIM council. We were also given the opportunity to meet with the Interior Design Professional Advisory Board, a group of successful Interior Designers, who provided input on the future role of IDeAS and how we might increase interdisciplinary collaboration with other student organizations within the faculty.

We concluded the year by taking part in the preparation and execution of the Faculty Year End Exhibition which successfully presented interior design student work to the greater community. Thank you to all who supported these events making it possible for IDeAS to continue to evolve and meet the needs of the interior design student body.



PN2008

The Planners' Network Conference

Dr. Richard Milgrom

Between July 17th and 20th, 2008, the Department of City Planning and the Faculty of Architecture hosted 225 participants at the Planners' Network Conference (see www.plannersnetwork.org). This was only the second time that the conference has been held in Canada, and it attracted people from around the continent, some as far away as the UK and Australia.

Planners Network includes a wide range of people involved in planning who have particular interests in social and environmental justice. The conference theme was "Flat Not Boring: Planning in Challenging Climates" and involved a broad array of community partners, including the Canadian CED Network, Bike to the Future, Resource Conservation Manitoba, and the Canadian Centre for Policy Alternatives.

The conference opened with public lectures about sustainable transportation at Red River College's downtown campus. The speakers were Todd Litman, from the Victoria Transport Policy Institute, and Will Toor, county commissioner and former mayor of Boulder, Colorado. The speakers arrived at the venue in one of the new

pedicabs operating in Winnipeg. About 250 people attended the event, which was also broadcast live by CKUW radio.

Friday consisted of nine day-long mobile workshops. These covered many topics, but included: Urban Ecology in a River City (and a canoe trip on the Seine River); From the City to the Reserve and Back Again (with a bus trip to Broken Head First Nation); Green Buildings and Active Transportation; and Art and the City. There were also a number of workshops that addressed housing, gentrification and employment issues in the inner city, including the challenges and opportunities faced by the city's Aboriginal communities.

The day ended when the workshops converged on Thunderbird House, where tired participants were provided with dinner and entertainment from the Manitoba Aboriginal Writers' Collective.

Saturday's daytime activities were focussed in the Russell Building at the University. The day's program included concurrent sessions that often addressed planning and urban topics in unconventional ways. These encouraged

discussion and debate and engaged academics, professionals, students and activists.

Over Saturday's lunch, the conference celebrated Peter Marcuse's (Columbia University) 80th birthday. Peter is a long time member and intellectual leader of Planners' Network, and Tom Angotti (Hunter College NY) and Jackie Leavitt (UCLA) paid tribute to his contributions.

The day wrapped up with a Manitoba social at the Ukrainian Labour Temple in the North End, called "Are You Local? Local Food, Local Art, Local Music." Art was provided in the form of projections from Video Pool; music was provided by the Magnificent Sevens and DJ Coop; and food – "local" burritos – by the Harvest Moon Society and Times Changed. Conference participants ended the long day dancing.

The conference concluded with Planners Network business breakfast on Sunday attended by a small but energetic group.

South Point Douglas

Long overlooked

Scott McCulloch and Dr. Sheri Blake



The area of South Point Douglas has long been overlooked by the rest of the city, until 2008, when it came under the spotlight. The area was experiencing development pressures, in part because its use as an industrial area began to change. It also became the controversial site for a proposed football stadium, an idea that was quickly abandoned. In response, the City voted to pursue a Secondary Plan for South Point Douglas to help guide the direction of its development into the future. The very strength of Secondary Plans is community participation... local residents planning the future of their own neighbourhood. In the fall of 2008, City Planning Master students worked with hundreds of people from South Point Douglas and the City of Winnipeg's Planning Department to raise community awareness on how a secondary plan shapes neighbourhood development and to encourage participation in that process. Students worked with residents (homeowners, renters and shelter residents), members of the Aboriginal community, the Manitoba Métis Federation, business owners, artists, and students of Argyle School. Their front-line efforts helped generate high turnout for the first public meeting and has led to several initial achievements for the community.

The backbone of the community engagement process is communication, using a range of techniques to draw out different and differing voices. During 11 workshops and various meetings, members of the community were able to share information, explore ideas, propose designs and envision future scenarios for the neighbourhood. The engagement process in South Point Douglas revealed many challenges for the secondary plan to address. Driving these is the evolving character of the area. The declining use of the area for industry, and the increasing interest in

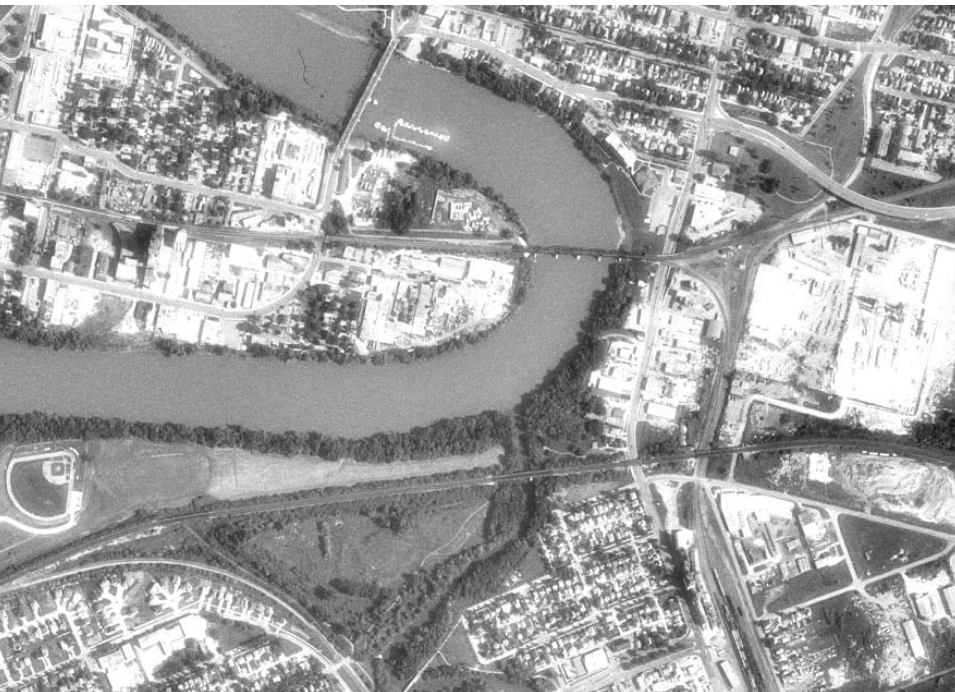
residential redevelopment, has resulted in outdated zoning. A likely outcome of the secondary plan will be rezoning for mixed use, allowing for more residential development to occur, along with a range of other uses. The workshops revealed a strong feeling that decisions affecting the neighbourhood needed to be made by those who live and work there, inclusive of the shelter residents, many who long ago made the neighbourhood their home. Too often in the history of Point Douglas, change has been forced on the inhabitants.

Another primary concern we heard was the need for economic development in the area, but that any development has to be inclusive. Jobs, housing and services are needed, and the area's proximity to downtown and adjacency to the Red River make it attractive for development. However, we heard time and again that the Point must remain affordable and accessible for those who already call it home. A concern that was repeatedly expressed was that high-end condominium development along the waterfront might drive up property prices and force out the residents and artists who live here. The neighbourhood is diverse in terms of people, cultures, and

incomes. This dynamic character was seen as the strength of the community and we heard the desire for any new development to integrate with this existing character.

Many people indicated that the transportation system affects any development, as well as the character of the neighbourhood. The Main Street underpass was seen to present safety and urban design concerns. The Disraeli Freeway was seen as physically dividing the community. Its re-evaluation was one of many hot topics at the workshops, and will be an important element for revitalization. There was a proposal to change the Louise Bridge into a pedestrian-only bridge, eliminating some of the high traffic through the area and returning the neighbourhood to its residential roots. As students, it became clear that balancing the needs of existing industries, with new development opportunities, and the hopes of the present residents is the crux and challenge of city planning.

Following the community-based workshops, students worked through the ideas in an intensive design session with professionals from the City of Winnipeg's Planning Property and Development



Department. We began to re-imagine what the neighbourhood could look like, based on the recommendations that emerged from the workshops. Rezoning, rerouting the Disraeli Freeway and expanding residential areas and green spaces became the physical backbone of planning for, with and by the community. Combined with social, economic and cultural programs, an entire vision for the future of South Point Douglas began to be realized.

The enormous amount of information gathered from the community was prepared into a report, submitted to the City to further inform the secondary plan, and compiled into a community newspaper. This was distributed to every person and business in the South Point Douglas area. These reports and newspaper can be downloaded at:

<http://umanitoba.ca/faculties/architecture/cp/Pages/news.html>

The community meetings and newspaper resulted in some quick initial achievements. Flowing directly from the meetings with local residents came the formation of the South Point Douglas Residents Association. They

have been active at all of the City's secondary planning meetings and will continue to carry forward their vision of the community. At the same time, the City has begun to recognize the long-term shelter residents of the area in their census data. This effectively doubles the acknowledged population of South Point Douglas. Also, the recent announcement in the *Winnipeg Free Press* of the possible development of a Provincial Park, along the Point Douglas riverbank, continues the City's long-term planning for the river-walk system, and fulfills requests made by many in the area.

Our purpose in pursuing the City Planning program is to improve cities for everyone. As the first studio to this program, Secondary Planning for South Point Douglas put us in the thick of the challenges that every city planner faces. The experience was incredibly informative, rewarding and positive as we came to realize that each of us can have an effect on our city and the lives lived in it.

Traveling Concepts

In Photography

Ivy Bricker & Aileen Zubriski

For the third consecutive year, Dr. Susan Close, an assistant Professor in Interior Design led an intersession graduate level photography course. The course was designed to stimulate and encourage the use of photography in an innovative method, allowing for the exploration of individual conceptual bodies of work. These explorations occurred in Montreal and Ottawa from May 19 to May 27th, 2009. A virtual exhibition and web launch was held on June 3rd, 2009 in Centre Space at the John. A Russell Building. The interdisciplinary work of the 15 students is showcased at

www.arch.umanitoba.ca/tcip/.

A Photo by: Rhayne Vermette
Ottawa, Digital Photograph



A











- B Previous Page
Photo by: Jenni Joorisity
Montreal, Digital Photograph

One carries the memory of previously occupied spaces with them as they meander through the city. The initial experience of place is constantly evolving as one adds to their understanding of the places they continuously occupy. This process of existing in a city is made up of the links between moments that add to one's comprehension of space on their own terms. The journey through becomes the integral machine in building experience.

- C This Page
Photo by: Ivy Bricker
Ottawa, Digital Photograph

Traces can be found, subtle markers and indications that begin to tell the story of inhabitation and being. It is within these traces, that a disappearance can be sensed. This sense of loss is generated within framed views in the cities of Montreal and Ottawa, allowing for the representation of disappearance in the moment when the subject leaves the frame. Through personal perspective the exploration of a moment begins to illustrate a pause in time and memory.

Architects without Borders

*Fighting Poverty,
Disease, and Social
Injustice*

Kelley Beaverford



A



A Have Mercy School
Kampala, Uganda
Kelley Beaverford

It may not be entirely fair to call designers lackadaisical when it comes to social responsibility. Architects Without Borders Canada (AWB) has mobilized over 100 designers who are deeply committed to fighting poverty, disease, and social injustice. As we move into our fifth year as a volunteer organization our accomplishments demonstrate that our professions can play a significant role in addressing some of the world's most critical issues.

AWB embraces education and housing projects in Winnipeg. Led by Laura Rempel (B.Env.D.2006) 27 volunteers participated in Habitat for Humanity builds while others taught design to children in inner city communities. Working with Dr Francis Amara (Faculty of Medicine), Joe Kaltornyk (M Arch student) is currently overseeing the efforts of volunteers to create a state-of-the-art science lab where secondary students will learn alongside the city's leading genetic and biomedical researchers.

This year's fundraising team, directed by Natalie Rogers (MID student), hosted several events such as an African Social and the perennially well-attended AWB Bowling Night. Volunteers also served on the steering committee of Friends of Uganda, who raised over \$40,000 for the Stephen Lewis Foundation in support of helping people living with HIV and AIDS. Andrew Lovatt (B.Env.D 2005) and Marla Wirasinghe (M Arch Student)

played a pivotal role in promoting these events through public relations and website design.

AWB awarded our second Travel Scholarship to Landscape Architecture student James Frank. The \$2000 grant supports a volunteer in their efforts to gain international experience. James traveled to Uganda to complete the pre-design work for two projects: Internet Access in Lyontonde and the Kesenene Primary School. He will also travel to Bosnia and Herzegovina to study therapeutic gardens as part of a course offered by the University of Washington.

The Master of Interior Design Studio One partnered with Friends International in the preliminary design of a vocational school for children living on the streets of Phnom Penh, Cambodia. Working with an international team and volunteers from the Faculty of Architecture, the students produced promising solutions for a new campus. While our partners in Cambodia pursue an ambitious fundraising campaign, professionals in Winnipeg, Paris, and Phnom Penh will continue to work on the design.

The Healthy House Project, with SOS Children's Village and the Canadian Architects Fund, is also well underway. A team of volunteers including Stanley Britton (B. Arch 1971), Jasbir Bhamra (MID 2005), and Mike Johnson (M Arch 2007) have contributed to the preliminary draft of the Healthy House Book for homeowners and builders in

rural Nepal. The book promotes safer construction practices in regions prone to earthquakes and fires.

Fighting social injustice is a primary concern for AWB. Working with Professor Leland Hill (VCU Qatar), AWB offered a workshop on social activism at the Mousharaka / IcoGrada Design Conference in Qatar. Twenty design students representing 15 countries were asked to identify issues they hoped to address in their design careers: environmental degradation, pandemic diseases, terrorism, and the widening gap between rich and poor were top priorities in the group. The students proposed real-world design interventions such as public service announcements, online campaigns, and greater international community engagement in design education.

There is undeniably a growing movement towards more socially responsible design. As volunteer Patrick Fleming (Faculty of Engineering), has observed, "...it is about making a link between design and global citizenship... as a service to lessening inequality in the world." Through organized efforts of volunteers designers find themselves well placed to engage in a more inclusive practice.

To learn more about AWB Canada visit our website at <http://awb-winnipeg.ca/>

Design Competitions

Doug Clark

Throughout the year, the Faculty is very fortunate to partner with the industry and community and provide real design opportunities for the students in all departments to showcase their ingenuity and talent in opportunities outside of the regular studio assignments. In many cases these opportunities can result in cash awards and/or recognition. This year we would like to highlight the experiences from the following three competitions:

EQ3

Celebrating Canadian Design



A

Sasa Radulovic and Johanna Hurme of 5468796 Architecture, in partnership with the Faculty of Architecture Partners Program organized a small competition for EQ3 with the idea of engaging students from all programs in our Faculty. EQ3 has been a participating member of the Partners Program, through their founding company, Palliser Furniture, since 1993.

EQ3 was in the process of creating their fall 2009 accessory line, which included small household items such as magazine storage, wall hooks, furniture items, rugs, wall hangings etc. It was intended that these objects would be the subject of the competition. The theme for the collection was Canadiana.

On October 8 Maryte Klizs (BED-2003), Product and Design Director for EQ3 introduced the competition to over 100 students in Centre Space.

On November 20, at a reception hosted at the EQ3 polo park retail store, the 40 student entries were visually displayed and the winners announced.

First Prize

\$1,500 cash and the opportunity to see their products manufactured and sold in EQ3 retail stores around the world.

The Maple Leaf Table

Meaghan Hunter and Leanne Muir

EQ3 Canadian Textile Collection

Kristina Nordstrom

2nd Prize

Mixed Lumber Lounging Chair

Ngoc Phan, Jacob Shank, and Camille Chauvin

Honourable Mention:

Ego coffee/end table

Marco Gallo and Jordan Pauls

Contemporary Canadiana Rug and Pattern

Anca Matyiku

The Slice Clock

Ben Borley

Wheat Field

Jacqueline Young

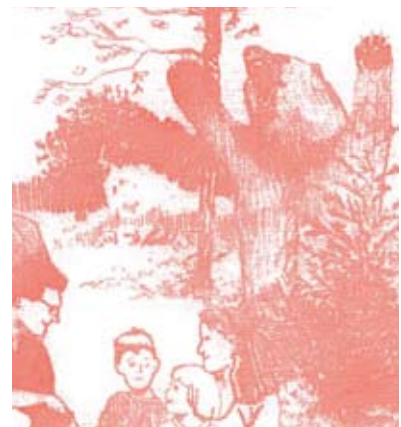


B

A The Maple Leaf Table. Rendering. Designed by Meaghan Hunter & Leanne Muir

B Mixed Lumber Lounging Chair. Rendering. By Ngoc Phan, Jacob Shank, and Camille Chauvin

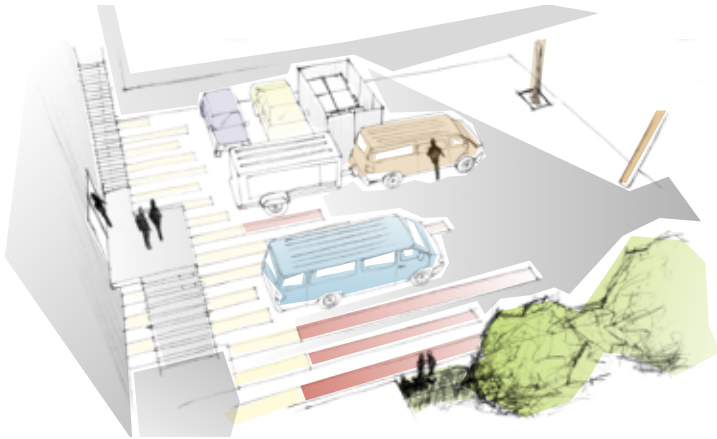
C Canadian Textile Collection Pattern. Designed by Kristina Nordstrom



C

West End Cultural Centre

The Parking Plaza at the West End Cultural Centre



A

The (WECC) called on students from the Faculty of Architecture to help realize a vision for their proposed parking plaza. They were looking for a student or student team to design the plaza in cooperation with the WECC and to oversee its installation in conjunction with Milestone Project Management.

The West End Cultural Centre

In 1987, an old church built in 1908 found new life as a community arts centre on the corner of Sherbrook St.

and Ellice Ave. The (WECC) opened to fill a void in the Winnipeg arts community by serving emerging artists and those working outside the musical mainstream. Over the years, the WECC has worked to introduce Manitobans to these artists, and to develop audiences for musicians previously restricted to a small niche market. In addition to producing concerts, the WECC programs community concerts, workshops and after-school drop in music classes.

Redevelopment

The WECC Board of volunteers undertook a major restructuring of the facility in June 2008. The redevelopment goal is to create a LEED certified project that incorporated as much of the 100 year old building as possible. The parking plaza program had to deal with site issues relating to safety, parking, accessibility, sustainability, re-use of materials, consideration for neighbours and cost.

Winning Design submitted by:

James Frank, Hailey Honcharik, Devin Segal, Shawn Stankewich and Chelsea Synnychch - "The Soundlot"

Honourable Mention: Lisa Ewasko and Carly Moore

Mandy Wallmann, Program Assistant with the West End Cultural Centre who with Gerry Humphreys from Milestone Project Management reviewed the design submissions noted that "the Soundlot" concept seemed to have interpreted the needs of the client and incorporated the re-use of existing materials the best. In particular the group fell madly in love with the bench they had designed." While some modifications will have to be made prior to construction it is hoped that the team will work with Gerry in modifying the design and throughout implementation during the summer of 2009.

Barkman Concrete

Landscape Architecture Construction

As a part of Course LARC 7270 - Landscape Architecture Construction - for the fifth straight year, a component of this class involves the design and development of working drawings for a product that could become a marketable catalogue component of the Barkman Concrete range of products.

This year the theme was skateable art. The instructor was Professor Alan Tate, and the jury consisted of representatives of Barkman Concrete; Alan Barkman, Wayne Wiebe, Paul Koop and Andrew Kondrat, Product/Design Consultant for Skate Concept (a subsidiary company within Barkman Concrete). The

competition was open to all students within the Faculty and \$3,000 of prize money was generously donated by Barkman Concrete.

The design processes included a trip to Steinbach to visit and tour the Barkman plant and ensure that the students had a good sense of the technical side of the project. Special thanks to all who participated in leading the tours, and providing the lunch.

This year we are pleased to announce that there were four recognized designs.

Shark Attack : Marla Clarke and Graham Gidden

The Bridge : Steven Berry

Banana Ramp : Kelly Wojnarski

The Wave : Elizabeth Wagner

Congratulations to all the winners, and special thanks to all who submitted.

The Partners Program is pleased to announce that Barkman concrete has

renewed their commitment to the Faculty of Architecture and the Department of Landscape Architecture. We look forward to next years submissions.

A WECC winning design. Rendering. James Frank, Hailey Honcharik, Devin Segal, Shawn Stankewich and Chelsea Synnychch

B Barkman Competition Banana Ramp. Rendering. Kelly Wojnarski



B

Joan Harland

A Life's Legacy

Doug Clark



Joan graduated from the University of Manitoba in 1938 with the Gold Medal in Architecture. She joined the Department of Interior Decoration in 1939, in what was then the Faculty of Engineering and Architecture. At that time, Interior Design was an emerging profession – there were no programs at other schools to emulate. Joan was a pioneer in developing a course structure and curriculum, and over the course of her career worked hard to establish and upgrade the standards of interior design education nationally and internationally.

In 1954 Joan became one of the 12 founding members of the Interior Designers Institute of Manitoba, now known as the Professional Interior Designer's Institute of Manitoba (PIDIM). In 1958, she became the first Head of the Interior Design Department, a position she held for 19 years.

In 1980, Joan Harland retired after 41 years of teaching Interior Design at the University of Manitoba. In that time she taught hundreds of talented designers, and was instrumental in the program's evolution from a small diploma program to one of the foremost Interior Design degree programs in North America.

In honour of Joan's retirement in 1980, and in recognition of her commitment to Interior Design, her friends, colleagues and former students established the Joan Harland Scholarship. The scholarship awards about \$550 each year to a deserving Master's of Interior Design student. However, for today's students, this is less than 10% of the annual costs for tuition, books and supplies.

Professor Emeritus Harland will

celebrate her 95th birthday this December. In celebration of her many achievements, we invite you to make a gift to help build the Joan Harland Scholarship Fund.

Janine Shwaluk, the most recent Joan Harland Scholarship winner, says, "The honour and prestige of receiving the Joan Harland Scholarship in Interior Design has played a key role in the completion of my graduate education, and will continue to help me as I continue on the path of becoming a successful Interior Design professional. The monetary assistance I received has relieved my financial pressure so that I can focus on achieving my educational goals instead of worrying about how to pay for the supplies necessary to communicate my design ideas."

Please consider ensuring the sustainability of Joan Harland's legacy with your gift to the Joan Harland Scholarship for Graduate Studies in Interior Design.

For further information please contact:

Department of Development
179 Extended Education Complex
University of Manitoba
Winnipeg, Manitoba R3T 2N2
Phone: (204) 474-9195 Toll-free: (800) 330-8066
Fax: (204) 474-7635
Email: development@umanitoba.ca
Website: umanitoba.ca/admin/dev_adv

Designing the Future

Roy C. Rettinger Graduate Scholarship for Interior Design

Renée Barclay

Every year, the Faculty of Architecture awards approximately \$280,000 to students through bursaries, scholarships and fellowships. And soon students who choose to go into Interior Design will have one more award to motivate them.

The Roy C. Rettinger Graduate Scholarship for Interior Design will be awarded to one outstanding student annually – an important award given that few graduate students in the Faculty of Architecture are fully funded.

"The scholarship will be the largest single financial award in the Department of Interior Design and will significantly contribute to our annual support for graduate students in the Faculty of Architecture," says Doug Clark, Executive Director of the Partners Program in the Faculty of Architecture.

Rettinger (BID '53) himself has had a successful career in the U.S., where he continues to reside. After graduating from the University of Manitoba, he went on to study furniture design at the Royal College of Arts in London, England, and in 1959, he received a Master of Science in Product Design from the Illinois Institute of Technology in Chicago.

During his career he bought and renovated Victorian residences on the north side of Chicago and many of his renovations have been written up in several magazines, including *Walking Tours of Chicago* and *Professional Builder*.

Rettinger is giving back "to acknowledge appreciation to the University of Manitoba" for the "fine education" he received.

"No one can ever forget the rigour that is required to complete a degree in this program," Clark says. "It is very rewarding to see alumni supporting the next generation of talented designers."

The above article is reprinted and used with permission from *Planning Matters* July 2009

Immersive Re-Searching

The Bill Allen Travel Scholarship 2008

Andrew Lewthwaite



A



B

If we assume one part of an architectural education constitutes a particularly wonderful brand of research spent cooped up in a design studio in obsessive pursuit of the nature of one's projects, then the second (often unspoken) part is most certainly the sort of "research by immersion" afforded by the experience of travel. The isolation factor of study in Winnipeg limits one's exposure to the varied architectural landscapes of larger, denser cities, and cultures where architecture is established within in the public consciousness. An opportunity such as that afforded by the Bill Allen Travel Scholarship, which is "to provide students of Architecture at the University of Manitoba with the freedom to explore architecture or architectural practice anywhere in the world" serves a critical role in fleshing out a student's education.

For my own travels, I originally planned a very narrow focus of interest in visiting a number of projects by the Swiss-firm of Gignon & Guyer to study how their buildings "aged", but expanded it to include long stints in Paris and Prague, and a more thorough driving trip in Switzerland. Wandering Paris: its arcades, its wonderful parks (new & old), the museum of architecture

at the Trocadero, the Musée des Arts et Métiers—each experience part of a particular brand of fieldwork that includes an incredible range of significant architectural works to visit (Villa Savoye in the morning, Parc la Villette in the afternoon....and so on). What other discipline can offer such freedom of research materials?

That buildings are situated in ways that do not (or cannot) come across in the fetish-ized representations found in most architectural media becomes most evident as one approaches, enters, and explores their spaces. The treacherous yet sublime route up the mountain valley to Peter Zumthor's Thermal Baths in Vals is as integral to the architectural experience as one's first step into the stone pools. The primacy of bodily experience is overwhelming throughout. Likewise, one's first glimpse of Ronchamp, its

unmistakable profile a tiny speck high up on the hill from the highway, marks the fuzzy boundaries of the duration of one's direct experience of the building, all part of Le Corbusier's intention for a quasi architectural/spiritual pilgrimage. One cannot ascertain these realities from books or descriptions; they become clear in active exploration.

One might ask, in this age, if there is such a thing as the architectural pilgrimage given mythological status by the likes of the Le Corbusier, Sverre Fehn, or Arthur Erickson as critical to the development of their respective oeuvres? For myself, the act of getting lost in cities and spaces was crucial in preparing to teach a second year design studio at the University of Manitoba.

- A Surface playground and folie
Parc la Villette in Paris by Bernard
Tschumi.
- B View from inside a full-scale
reconstruction of one of Le Corbusier's
Unité d'Habitation apartments looking
out over the modern architecture
exhibition of La Cité Architecturale at
the Trocadero in Paris.

Fall Awards

Faculty Wide Awards

Allan Waisman Aboriginal Scholarship
Rachelle Lemieux

Fridrik Kristjansson Scholarship in Architecture
Matthew Fitzgerald

Maxwell Starkman Travel Award
Adam Robinson and Kaeley Wiseman

James Palmer Lewis Student Award
Matthew Derksen

G. Clarence Elliott Fellowships
Corey Greenham, Matthew Fitzgerald,
Kaeley Wiseman

Faculty of Architecture Endowed Scholarship
Sarah Cooper, Amy Klassen, Janine Shwaluk,
Shawn Stankewich, Lana Warantz

Urban Design Scholarship
Brett Shenback

University of Manitoba Graduate Fellowship
Timothy Krahn

Carl R. Nelson Jr. Teaching Award
Nada Subotincic

Architecture

Arthur Buckwell Memorial Scholarship
Amy Klassen

Bill Allen Scholarship in Architecture
Travel: Andrew Lewthwaite
Research: Jason Robbins

Corbett Cibinel Architects Award for Sustainable Design
Corey Greenham

Corrigill Scholarship
Elyssa Stelman

E.H. Price Ltd. Recruitment Scholarships
Derrick Finch, Jennifer Joorisity, Chris Gilmour,
Aleksandr Olivson

Leonard C. Klingbell Scholarship in Architecture
Carl Drohomereski

Le Prix Jacques Collin en Architecture
Ryan Gorrie

Mel P. Michener Architectural Fellowship
Samantha Lynch

Norman Ripley Memorial Scholarship
Leif Friggstad

Randy Gilbert Memorial Scholarship
Dirk Blouw

Steel Structures Education Foundation Scholarship
Elyssa Stelman and Dustin Fanni-Sharrow

University of Manitoba Graduate Fellowship
Jennifer Joorisity, Kyle Bradshaw, Chirs Gilmour,
Evan Marnoch, Gregory Rubin, Derrick Finch

Manitoba Graduate Scholarship
Adrian Benoit, Dirk Blouw, Jason Campbell,
Amy Klassen, Rachelle Lemieux, Samantha Lynch,
Keith Yeung

The Social Sciences and Humanities Research Council (SSHRC)
Carl Drohomereski

City Planning

City Planning Jubilee Scholarship
Elisabeth Saffiuk

Corrigill Scholarship
Robyn Webb

E.H. Price Ltd. Recruitment Scholarships
John Paul Harris, Lauren Lange

Mayor's Medal
Shaun Klassen

MPPI Best MDP Award
Stephen Walker

MPPI Case-in-point Excellence Awards
Grand Prize: Ludwig Lee
Special Commendation: Shelagh Graham
Honourable Mention: Matthew Fitzgerald

University of Manitoba Graduate Fellowship
Waleed Albakry, John Paul Harris, Jeffrey Pratte,
Elisabeth Saffiuk, Kaeley Wiseman

Manitoba Graduate Scholarship
Sarah Cooper, Karen Kliewer

The Social Sciences and Humanities Research Council (SSHRC)
Barb Besner

Environmental Design

Michael Cox Scholarship
Todd Mayer

Students' Architectural Society Award
Fernanda Rubin and Chelsea Synychych

Dr. A.W. Hogg Scholarships
Shawn Stankewich

Isbister Scholarship
Shawn Stankewich

Faculty of Architecture Design Award
Shawn Stankewich

Corrigill Scholarship
Ivy Bricker, Ariadna Chotiany, John Duerksen,
Nicholas Alexiuk

James Palmer Lewis Scholarship
Janelle Fillion

Kasian Scholarship for Architecture and Design Excellence
Todd Mayer

E.H. Price Ltd. Recruitment Scholarships
Judith Cheung, Jarrid Crichton,
Clifford Goodwill, Melissa Vasconcelos

Magda Hulsbosch Award
Jarrid Crichton

Pinky Prize
Mike Seymour

Interior Design

Corrigill Scholarship
James McCallan-Malamatenios

E.H. Price Ltd. Recruitment Scholarships
Adria Brotzel, Michelle Zelikson

Joan Harland Scholarship
Janine Shwaluk

PIDIM Thesis/Practicum Prize
Jennifer Bouchard (Gulenchyn)

Tamera Kucey Memorial Scholarship
Ivy Bricker

The R.A.C. Memorial Scholarship
Hailey Conner

University of Manitoba Graduate Fellowship
Amber Bewza, Vanessa Ilg, Priscilla Mah,
Janine Shwaluk

The Social Sciences and Humanities Research Council (SSHRC)
Anna Westlund

Landscape Architecture

Alexander E. Rattray Scholarship in Landscape Architecture
Yihong Liao

Barkman Concrete Scholarship
Allison Birkett, Allyson Bissky, Marla Clarke,
Graham Gidden, Jana Hoag, Meaghan Hunter,
Vanessa Jukes, Justin Neufeld, Tamara Marajh,
Kathryn Voroney

Carl R. Nelson Jr. Traveling Fellowship
Charles Sands

Corrigill Scholarship
Kathryn Voroney

E.H. Price Ltd. Recruitment Scholarships
Allyson Bissky, Eric Hart, Justin Neufeld,
Kathryn Voroney

Manitoba Association of Landscape Architects (MALA) Fellowship
Meaghan Hunter

University of Manitoba Graduate Fellowship
Jennifer Wall, Kelly Wojnarski, Yoshihiro Yabe,
Aileen Zubriski

Manitoba Graduate Scholarship
Elizabeth Wagner, Lana Warantz

The Social Sciences and Humanities Research Council (SSHRC)
Cameron Bradshaw

Landscape Architecture Thesis Prize
Alison Scott

Spring Awards

Environmental Design

University Of Manitoba Gold Medal
Shawn Stankewich

Dan Muir Memorial Award
Aleksandra Chomik

Architecture

Alpha Rho Chi Medal
Jocelyn Tanner

Henry Adams American Institute Of Architects Medal
Andrew Lewthwaite

Henry Adams American Institute Of Architects Certificate
Zachary Pauls

Manitoba Association Of Architects Comprehensive/Design Thesis Medal
Rebecca Loewen

Royal Architecture Institute Of Canada Student Medal
Matthew McFetrick

Royal Architecture Institute Of Canada Honour Roll
William Alston, Afsaneh Karamizadeh, Karen Nelson, Jason Robbins

ARCC/KING Student Medal
Ryan Gorrie

City Planning

Manitoba Professional Planners Institute (MPPI) Award
James Moore & Marcella Poirier

Interior Design

Steelcase Prize for Design Excellence
Vanessa Aleshka

Profession Interior Designers Institute of Manitoba Medal
Vanessa Aleshka

Jean M. Pearen Scholarship
Adria Brotzel

Landscape Architecture

Manitoba Association Of Landscape Architects Gold Medal
Kara McDowell

Canadian Society Of Landscape Architects Award
Amanda E. Yakiwchuk

James Palmer Lewis Student Award
Suzy Melo

New Awards

- 01 Charles H. Thomsen Scholarship
- 02 Cibinel Architects Ltd. Award for Design
- 03 Frank and Margie Silver Bursary
- 04 Harlyn Thompson – Lectureship Series
- 05 Kasian Scholarship for Architecture and Design Excellence
- 06 Keith B. and Edith Jean Davison Bursary
- 07 Manitoba Association of Architects (MAA) Recruitment Award
- 08 Northern Sky Architecture Award for Environmental Stewardship
- 09 Pinky Prize -In honour of John W. Graham
- 10 Steelcase Prize for Design Excellence
- 11 Terry Cristall Scholarship in Environmental Design
- 12 Alison Scott Bursary in Landscape Architecture
- 13 Dean David Witty Urban Design Scholarship
- 14 Étienne Gaboury Award in Architecture
- 15 Harry Seidler and John Russell Recruitment Award in Architecture
- 16 MPPI Fellowship
- 17 Raymond S.C. Wan Architect Inc. Recruitment Award
- 18 Steel Structures Education Foundation

Bursaries

- 01 Barbara C. Poole Bursary
- 02 Donald L. Dunklee Award in Architecture
- 03 Donald L. Dunklee Award in Interior Design
- 04 Edwin (Ted) Raines Bursary
- 05 Faculty of Architecture Emergency Bursary
- 06 Faculty of Architecture Endowed Bursary
- 07 Gordon Arnott Bursary
- 08 Graham C. Lount Family Foundation Bursary
- 09 Haworth Bursary
- 10 Isadore Coop Bursary in Architecture
- 11 J.M. Gilchrist Bursary in Architecture
- 12 John A. Russell Alumni Bursary
- 13 Neil Kay Brown Memorial Bursary
- 14 Paul Grant Bursary in Architecture
- 15 Peggy Jackson Seed Bursary in Architecture
- 16 Richard Jackson Memorial Bursary
- 17 Sari Golden Memorial Bursary
- 18 Shanski Bursary in Architecture
- 19 Stantec Architecture Bursary
- 20 Victoria Hull Memorial Bursary
- 21 William E. Sheets Bursary in Architecture
- 22 Winston Leathers Award

Other Awards

- 01 Andre Schwabenbauer Award
- 02 Building Energy Management Manitoba (BEMM) Scholarship in Architecture and Engineering
- 03 Faculty of Architecture Endowment Fund Saskatchewan Association of Landscape Architects (SALA) Award

2009 Endowment Fund

Grant Recipient	Short Title of Project	\$
Jason Campbell and Samantha Lynch	Warehouse Journal 18	12 700
Neil Minuk	Faculty of Architecture Gallery Exhibitions	15 000
Lancelot Coar	Clearwater Design Build Studio	1 000
Shawn Stankewich	Faculty of Architecture Ditchball	1 000
Kaeley Wiseman	University of Manitoba Student Garden "Taking Gardening out of The Box"	1 500
Allyson Bissky	MALA Night - annual LASA event	500
Meaghan Hunter	Berm & Swale	1 500
Marcella Eaton	ATMOSPHERE [2], a symposium, Faculty of Architecture, University of Manitoba	10 000
Nat Chard	Cultural Events Food for Thought	1 500
Nat Chard	Cultural Events Faculty Lecture Series	3 000
Annual Endowment	Cultural Events	15 000
Total		62 700



A

Étienne Gaboury

B. Arch '58, Honorary
Doctor of Laws '87

*A Distinguished
Alumnus*

Doug Clark



B

On April 20, over 110 friends and family joined with the University of Manitoba, and the Faculty of Architecture to honour and recognize Dr. Étienne Gaboury as a Distinguished alumnus of the University and the Faculty of Architecture.

Jazz provided by Keith Price, Julian Bradford and Curtis Nowasad, three talented musicians from the School of Music, and refreshment entertained guests as they arrived at the John A. Russell Building. Faye Hellner, a former Professor in the Faculty and Past Executive Director of the Partners Program was the master of ceremonies for the evening. Faye was also the Editor and concept designer for the 2005 publication entitled *Étienne Gaboury* published by Éditions du Blé. For the evening she coordinated a presentation of Étienne's work, as well as a series of "family" pictures for those of us who had never seen Étienne sailing, relaxing at the lake, or making sausage with his grandchildren. Étienne, his wife Claire, their family and friends were then ushered into Centre Space where they were fed and entertained by stories from the following series of presenters:



C

Faye provided opening remarks
 Professor Patrick Harrop brought
 bilingual greetings to the group on behalf
 of the Faculty of Architecture
 Buck Perrin - Student Architectural
 Society (SAS) president -class of 58
 James Kacki - a fellow architect and long
 time Associate of Étienne's
 Garry Hilderman - Principal of
 Hilderman, Thomas, Frank, Cram and
 long time collaborator with Étienne
 Bill Bebhuk - former Head of the
 Department of Psychiatry and client for
 the PsychHealth Centre that Étienne
 designed
 Jacqueline Jasinski - a colleague and
 practitioner who had worked with
 Étienne until his retirement in 2005
 The three grandchildren- Sebastian,
 Matthiew and Jean-Bocar talked about
 their grandfather
 Roger Léveillé, a Franco-manitoban
 writer who has published over 20 books,
 most recently in collaboration with
 Étienne.
 Dean Dave Witty- saluted Étienne and
 presented him with a "Distinguished
 Practice certificate and gift on behalf of
 the Faculty.
 Greetings were delivered on behalf

of the Premier, the Honourable Gary
 Doer, Hugh McFadyen leader of the PC
 party of Manitoba, and in person by the
 Honourable Dr. Jon Gerard, Leader of
 the Manitoba Liberal party.

The youngest of a family of 11
 children, Étienne Gaboury was born on
 April 24, 1930 to a farming family from
 Swan Lake, Manitoba.

Étienne graduated from the
 University of Manitoba in 1953 with a
 Bachelor of Arts in Latin Philosophy.
 After encouragement from Father
 Lucien Hardy Étienne decided to apply
 to the School of Architecture at the
 University of Manitoba. He won several
 design awards and prizes during his
 studies and graduated with a B.Arch. in
 1958. He was subsequently awarded a
 Government of France bursary to attend
 the famed Ecole des Beaux-Arts in
 Paris.



D

- A The Forks.
Photograph.
Winnipeg, Manitoba.
- B 90 River Road.
Winnipeg, Manitoba.
Architect: Etienne Gaboury.
- C The Forks.
Aerial Photograph.
Winnipeg, Manitoba.
- D Étienne Gaboury
A Tribute Celebration
April 20, 2009
John A Russell Building.
Centre Space.

As a result of the dinner and donations
 received, a bursary has been created
 by the Department of Architecture in
 Étienne's name.

For a more detailed biography, please visit:
www.archiseek.com/architects/g/gaboury_etienne.html

Accomplishments

National Awards

Doug Clark

ARCC/KING Student Medal

This external award was presented to Ryan Gorrie (M.Arch student) at the time of the spring 2009 convocation exercise. Named in honour of the late Jonathan King, co-founder and first president of the Architectural Research Centers Consortium (ARCC), this award is given to one student per ARCC member school. Selection of school recipients is at the discretion of the individual institutions, and is based upon criteria that acknowledge innovation, integrity, and scholarship in architectural and/or environmental design research.



David Witty and Ryan Gorrie

Prix de Rome

Kelly Nelson Doran is the winner of the Canada Council for the Arts' Prix de Rome in Architecture for Emerging Practitioners. He will have the opportunity to study the impacts that resource development companies have on the landscape, infrastructure and urbanism of the North. This \$34,000 Prix de Rome is awarded to a recent graduate of one of Canada's ten accredited schools of architecture who demonstrates outstanding potential.

Born in Winnipeg, Doran was the 2003 University Gold Medallist at the University of Manitoba where he earned a Bachelor of Environmental Design.

Professionally, Doran has worked with WilliamsonWilliamson Inc. (Toronto), Eisenman Architects (New York), Syverson Monteyne Architects (Winnipeg) and Corbett Cibinel Architects (Winnipeg). Doran currently resides above the Arctic Circle in Tromsø, Norway where he is working with 70°N Arkitektur AS on the sustainable redevelopment of a former docklands in Copenhagen.

RAIC Awards 2009

The Royal Architectural Institute of Canada (RAIC) has awarded its 2009 Gold Medal to Vancouver-based architects John Patkau (BES, '69, M.Arch, '72) and

Patricia Patkau, (B.I.D., '73) founders of Patkau Architects Inc.

As noted in Canadian Architect "They fulfill the dream that ordinary people have about architecture: that life can be more whole, more harmonious, more livable because such a building exists," the Gold Medal selection committee said.

The Gold Medal is awarded in recognition of significant contribution to Canadian architecture. It is the highest honour the profession of architecture in Canada can bestow.

\$100,000 TD Trust Go Green Challenge

Three City Planning master's students were one of four university teams to win TD's \$100,000 Go Green Challenge. Chris Baker, Kaeley Wiseman, and Richard Mahé were presented a cheque for \$25,000 from the TD Friends of the Environment Foundation for their proposal on urban sustainability. Faculty sponsor for this challenge was Dr. David van Vliet, Associate Professor, City Planning.

Their submission called *New Way to Look at Old Spaces: A Vision for Green Infrastructure Networks* proposed how single-use spaces such as railways, hydro line corridors and pipelines can

also be used as green space, including community gardens, wildlife habitats and bike paths. As part of their submission the students did a case study in conjunction with the Bishop Grandin Greenway Inc., a community organization that formed partnerships with the City of Winnipeg and Manitoba Hydro to build a greenway along the Bishop Grandin corridor.

This was the second annual Go Green Challenge, a national competition that invited university and college teams of two or more students to submit an essay containing an idea or proposal that would have a positive environmental impact on a community. This year's participation doubled over last year with essays from 182 teams representing 460 students from 52 schools across the country.

For more information on Go Green Challenge winners and their submissions, please visit:

www.tdcanadatrust.com/gogreen

www.youtube.com/watch?v=JWmvLLr3-Bk



L to R: Chris Baker, Kaeley Wiseman, and Richard Mahé

If you are aware of significant achievements by our graduates, please contact the Partners Program so that we may include these in future issues.

Partners Program

2009-2010 Members

The Partners Program is made up of key business leaders who represent various segments of the design and building industry. This year's members are located in Manitoba, Alberta, the Yukon and are a vital external link to the Faculty.

Alsip's Building Products and Services
alsip's.com – Jason Alsip

Barkman Concrete Ltd.
barkmanconcrete.com – Paul Koop

Building Products & Concrete Supply Ltd.
Sean Worden

Carlyle + Associates
carlyleandassociates.com - Doug Carlyle

Cohos Evamy integratedesign TM
cohos-evamy.com - Stephen Boyd

Community Member
Harlyn Thompson

Crosier Kilgour & Partners Ltd.
ckpeng.com - Tom Malkiewicz

DIRTT Environmental Solutions Ltd.
dirtt.net - Chris Bain

E.H. Price Limited
price-hvac.com - Gerry Price

EQ3
eq3.com - Peter Tielmann

**Friesen Tokar Architects
+ Landscape + Interior Designers**
ft3.ca - Ken MacKinnon

Gateway Kitchen & Bath Centre
gatewaycab.ca - Adam Pauls

Hilderman Thomas Frank Cram
htfc.mb.ca - Heather Cram

JELD-WEN
jeld-wen.ca - Eduardo Belik

Kobayashi + Zedda Architects Ltd.
kza.yk.ca - Jack Kobayashi

LM Architectural Group
lm-architects.com - Terry Danelley

Manitoba Hydro
hydro.mb.ca - Tom Gouldsborough

McGowan Russell Group
mcgowanrussell.com - Susan Russell

Melet Plastics Inc.
meletplastics.com - Ed Shinewald

The Forks North Portage Partnership
theforks.com - Jim August

Number TEN Architectural Group
numberten.com - Doug Hanna

O2 Planning + Design Inc.
o2design.com - Douglas Olson

PCL Constructors Canada Inc.
pcl.com - Alfred Schleier

PIDIM
pidim.ca - Jennifer Wiwchar-Fast

Prairie Architects Inc.
prairiearchitects.ca - Dudley Thompson

Raymond S. C. Wan Architect
raymondscwanarchitect.com - Raymond Wan

Shelter Canadian Properties Limited
scpl.com - Arni Thorsteinson

Smith Carter
smithcarter.com - Esther Patzia

Smith Carter
smithcarter.com - Jim Yamashita

Stantec
stantec.com - John Petersmeyer

Winnipeg Airports Authority
waa.ca - Michael Rodyniuk

Return undeliverable items to:

Faculty of Architecture, Partners Program
205 Architecture 2 Bldg
University of Manitoba
Winnipeg, MB R3T 2N2
Canada