

Workplace-Specific New Worker Health & Safety Orientation Training Record

Faculty or unit: Faculty of Agricultural and Food Science, Department of Animal Science

Workplace:

Date:

Training Provided	Topic
	Supervisor's contact information Email: _____ Phone: _____
	Local area safety committee (LASH) contact: Agriculture.LASH@umanitoba.ca For more information, visit EHSO Health & Safety Committees
	Workplace or job-specific procedures (if applicable; complete field below) ¹
	Hazards associated with new worker duties and control measures in place (if applicable; complete field below) ¹
	Prohibited or restricted activities (if applicable; complete field below) ¹
	Location of first aid kits
	Notice of Injury reporting procedure. <small>Submit completed forms to OHReport@umanitoba.ca and cc Charlene.Hawryluk@umanitoba.ca</small>
	Emergency procedures (evacuation route and muster points) <small>Refer to Dept. Safety Manual and contact Chief Fire Warden with any questions or concerns.</small>
	Department of Animal Science Safety Manual
	Report building safety or maintenance issues to animal.science@umanitoba.ca

¹**Additional details of training:**
Please indicate what topics were discussed.

Note that site-specific biosafety training and lab safety checklist for new lab personnel, if applicable, will address related risks separately therefore details need not be repeated here.

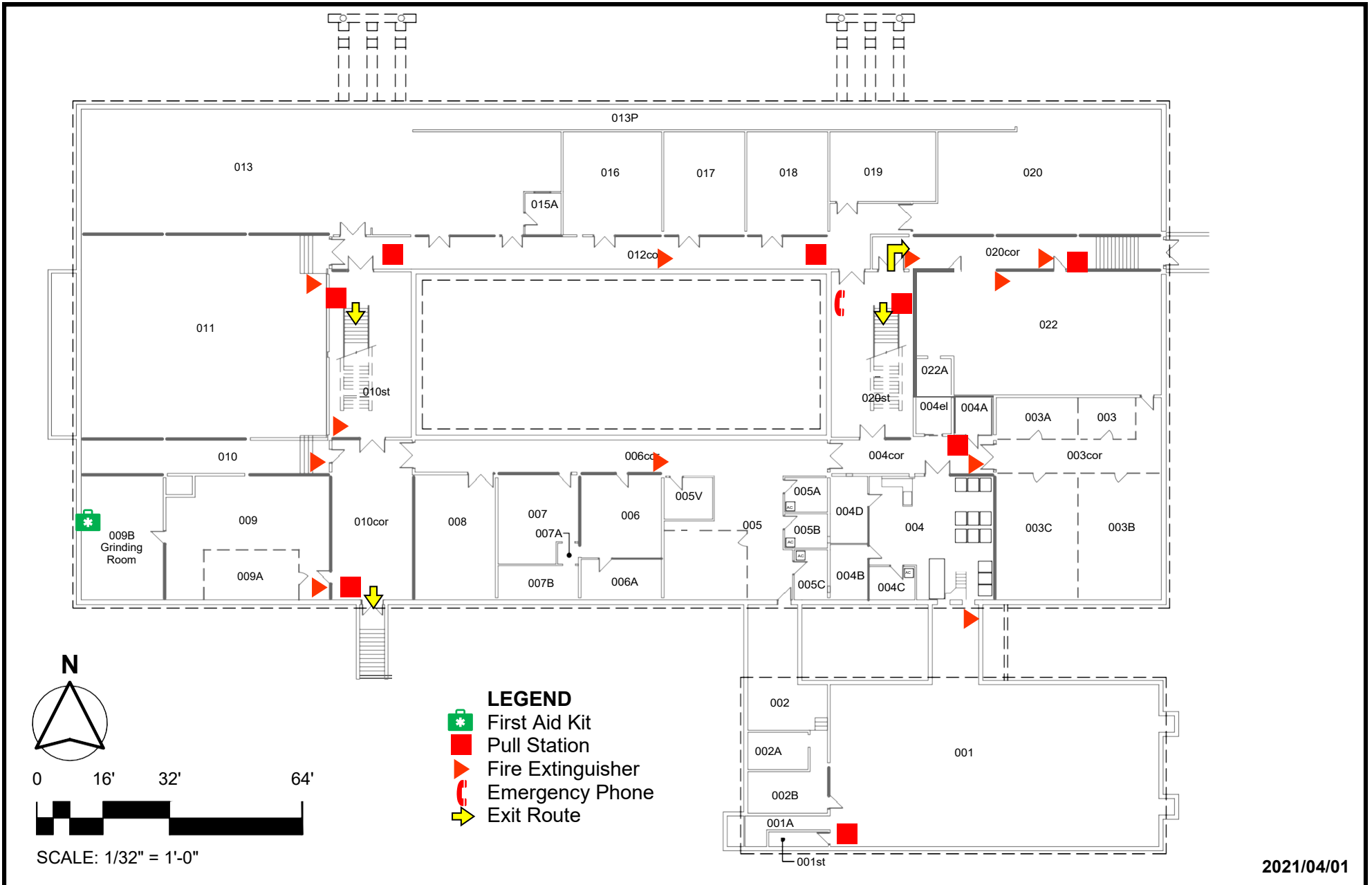
Supervisor's Name:

Supervisor's Signature:

Worker's Name:

Worker's Signature:

APPENDIX A: Location of First Aid Kits, Fire Extinguishers and Pull Stations, and Exit Routes

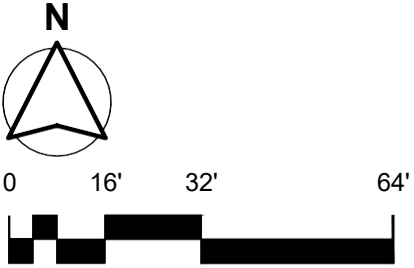


Physical Plant Department
Architectural and Engineering Services

ANIMAL SCIENCE / ENTOMOLOGY - 015
12 DAFOE ROAD, WINNIPEG MB
LEVEL 000

MUSTER POINT

3/21/15 Architecture\AAD15-Keyplan.dwg

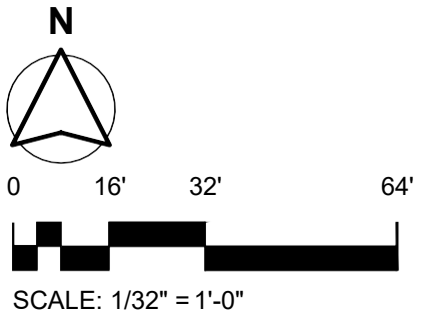
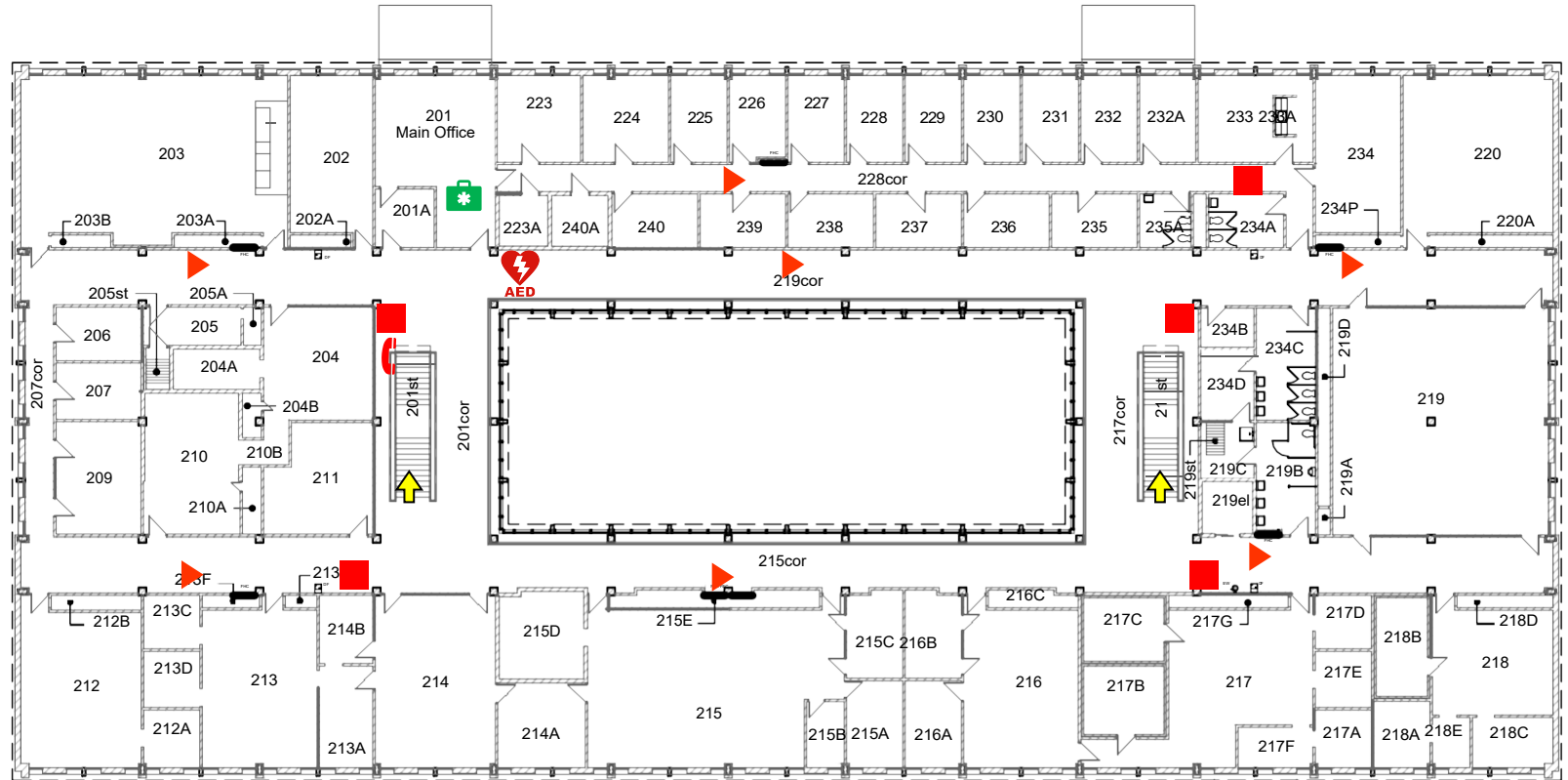


2021/04/01



University of Manitoba | Physical Plant Department
 Architectural and Engineering Services

ANIMAL SCIENCE / ENTOMOLOGY - 015
 12 DAFOE ROAD, WINNIPEG MB
LEVEL 100



2021/040/1