

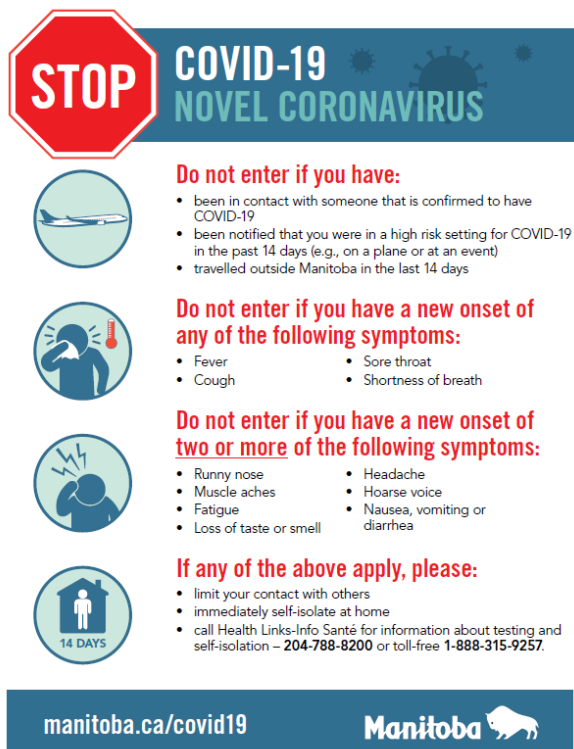
UM COVID-19 Signage Guidelines:

This document was created as a guideline in helping your faculty/department prepare for return of students/staff to campus. Print off free posters for use from the following links or order any signage you may require from local signage vendors like Western Safety Signs, Letterall Signs etc. or any approved supplier.

Note that signs on the exterior of campus, entrances of buildings and interior common areas (i.e. stairs, halls, elevators, washrooms) are provided and installed by Physical Plant. If you require additional signage in these areas or have questions please contact the O&M Customer Service Desk at 204-474-6281.

Signage in Faculty/Department allocated spaces are intended to be printed and installed at the discretion of that unit. Please use poster putty and install using best discretion to minimize damage to surfaces.

1. Resources and links are found on the last page on the document.
2. Where to use:
 - a) Building Entrances
 - Located at all building entrances
 - Print large on sandwich board at University Centre, Dafoe Bus Terminal, Extended Ed Walkover, and Curry Place.
 - Have you performed your self assessment
 - https://www.gov.mb.ca/asset_library/en/coronavirus/COVID-19-poster-1.pdf
 - https://www.gov.mb.ca/asset_library/en/coronavirus/socialdistancinginfographic.pdf
 - <https://sharedhealthmb.ca/files/covid-19-screening-questions-poster-large.pdf>
 - <https://sharedhealthmb.ca/files/attention-visitors-large.pdf>



STOP COVID-19 NOVEL CORONAVIRUS

Do not enter if you have:

- been in contact with someone that is confirmed to have COVID-19
- been notified that you were in a high risk setting for COVID-19 in the past 14 days (e.g., on a plane or at an event)
- travelled outside Manitoba in the last 14 days

Do not enter if you have a new onset of any of the following symptoms:

- Fever
- Cough
- Sore throat
- Shortness of breath

Do not enter if you have a new onset of two or more of the following symptoms:

- Runny nose
- Muscle aches
- Fatigue
- Loss of taste or smell
- Headache
- Hoarse voice
- Nausea, vomiting or diarrhea

If any of the above apply, please:

- limit your contact with others
- immediately self-isolate at home
- call Health Links-Info Santé for information about testing and self-isolation – 204-788-8200 or toll-free 1-888-315-9257.

manitoba.ca/covid19 **Manitoba**

Other posters



(Shared Health posters)

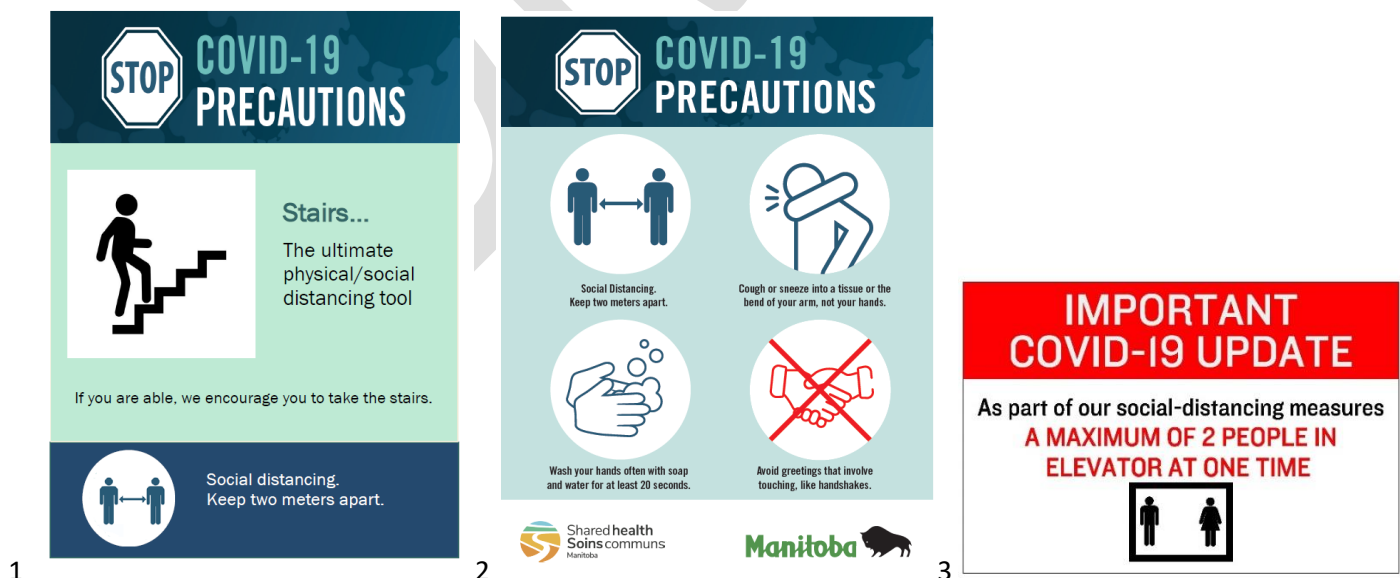
- b) Elevator Lobby
- Located at each elevator lobby
 - Elevator social distance, use the stairs
 - Cough etiquette
 - Hand Hygiene

<https://sharedhealthmb.ca/files/precautions-to-follow-letter.pdf>

<https://sharedhealthmb.ca/files/covid-19-elevator-distancing-poster-large.pdf>

<https://sharedhealthmb.ca/files/covid-19-stairs-poster.pdf>

<https://sharedhealthmb.ca/covid19/providers/hand-hygiene-posters/>



(Shared Health posters)

- <https://sharedhealthmb.ca/files/covid-19-cell-phone-germs.pdf>
- <https://sharedhealthmb.ca/files/hand-hygiene.pdf>
- <https://sharedhealthmb.ca/files/disinfect-your-device.pdf>
- <https://sharedhealthmb.ca/files/hand-hygiene-wash.pdf>
- <https://www.westernsafety.com/collections/prevent-the-spread/filter-by-keyword-hand-washing>

(Shared Health posters)



Shared Health poster



Western Safety Sign Posters



CCOHS.ca



CCOHS.ca



<https://www.ccohs.ca/products/posters/handwashing.html>

https://www.ccohs.ca/products/boutique/handwashing_sticker/

d) Classroom Seating

- Used in classrooms to assign seating and remove rows



e) Queuing

- Areas where there is queuing of more than 10 people for greater than a total of 30 min each day
- Floor decal being obtained through Province.
- Arrow also being obtained through Province.
- Student registration area, UMSU offices, Food service areas, Cashiers office, etc.
- <https://manitoba.ca/covid19/resources/index.html>



f) Laboratories/Faculties

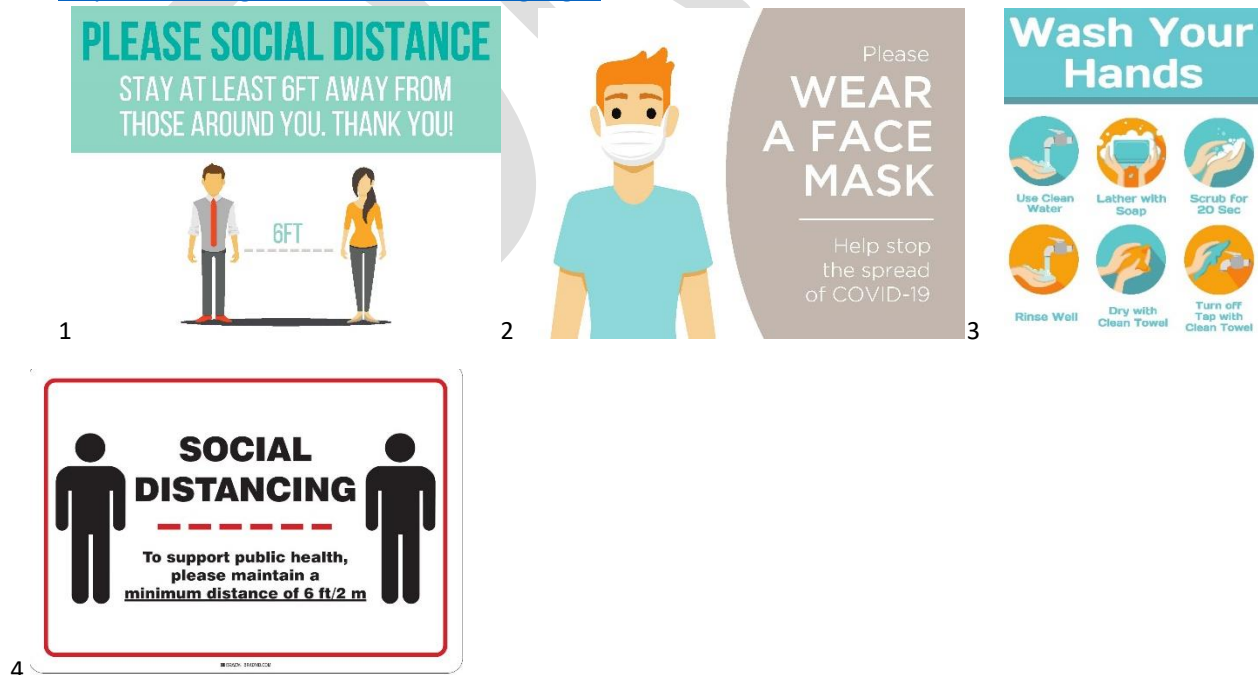
- Post in labs or areas where there are shared devices
- <https://sharedhealthmb.ca/files/disinfecting-shared-devices.pdf>



g) Available UM posters- contact Physical Plant using Project Request Form
https://umanitoba.ca/campus/physical_plant/media/Project_Request_Form.pdf



h) Free downloads available from Signs.com
<https://www.signs.com/coronavirus-signage/>



Resources and links:

<https://sharedhealthmb.ca/covid19/providers/posters/>

<https://sharedhealthmb.ca/covid19/providers/ipc-resources/>

<https://www.gov.mb.ca/covid19/resources/index.html>

https://www.ccohs.ca/topics/hazards/health/pandemics/#ctgt_wb-auto-15

<https://www.signs.com/coronavirus-signage/>

<https://www.westernsafetysign.com/collections/prevent-the-spread>

Where to purchase:

- 8.5 x 11 Lexan holders

[https://www.grandandtoy.com/en/product/69201-0 Deflecto Clear Sign Holder For letter-size \(8 12 x 11\) Literature.aspx](https://www.grandandtoy.com/en/product/69201-0 Deflecto Clear Sign Holder For letter-size (8 12 x 11) Literature.aspx)

https://www.amazon.ca/NIUBEE-Acrylic-Adhesive-Restaurant-No-Drilling/dp/B07T4FSNL8/ref=sr_1_1?keywords=lexan%2Bwall%2Bholder&qid=1590082308&sr=8-1&th=1

https://www.grainger.ca/en/product/SIGN-HOLDER-WALL-8-1-2X11-ACRYLIC-C/p/WWG5YGE8?analytics=RecommendationZones&cm_sp=IDP- -CAV- -RR- -PR- -NT-NA- -EN

- 8.5 x 14 Lexan holders
- 11 x 17 Lexan holders

https://www.grandandtoy.com/EN/search/pages/browse/Sign-Holders/_/N-bcr?cmp=VNHOLDER03

- Sandwich Boards

<https://www.westernsafetysign.com/collections/posts-stands-hardware/products/a-frame-sign-stand-a-board>

<https://www.grainger.ca/en/product/OUTDOOR-SIGN%2CSNAP-FRAME%2C24IN-X-36IN-/p/FTNINE183790>

- Poster putty

<https://www.grandandtoy.com/en/product/10-00540-2 LePage Fun-Tak Mounting Putty.aspx>

- Physical Plant posters

https://umanitoba.ca/campus/physical_plant/media/Project_Request_Form.pdf