

MULTIPLE MINI-INTERVIEW (MMI)

Department of Physical Therapy
School of Medical Rehabilitation



Outline

1. What is the MMI?
2. Why the MMI?
3. The logistics of the MMI
4. Types of stations
5. Key points
6. Practice questions
7. Additional information

What is the MMI?

It is a series of mini-interviews, lasting

10 minutes each.

Why the MMI?

The MMI evaluates personal characteristics (non-cognitive attributes) important for success in the health sciences including:

critical thinking

ethical/moral decision making

self-evaluation

communication

cultural sensitivity

empathy

Why the MMI?

This interview method provides an opportunity for applicants to apply general knowledge and personal experiences to issues relevant to the society in which they live and the health care systems in which they hope to work.

Why the MMI?

The MMI gives the candidates a fresh chance to impress with every station.

The MMI provides flexibility in questions not available in traditional interviews.

Research has shown that it is more fair for the candidates.

Logistics of MMI

- 8 x 10-minute stations (2 simultaneous tracks)
 - 2 minutes to read question & 8 minutes to perform
- Signal at 8 and 10 minute marks
- Interviewer in every room
- One global score per candidate per station
- Total duration 80 minutes

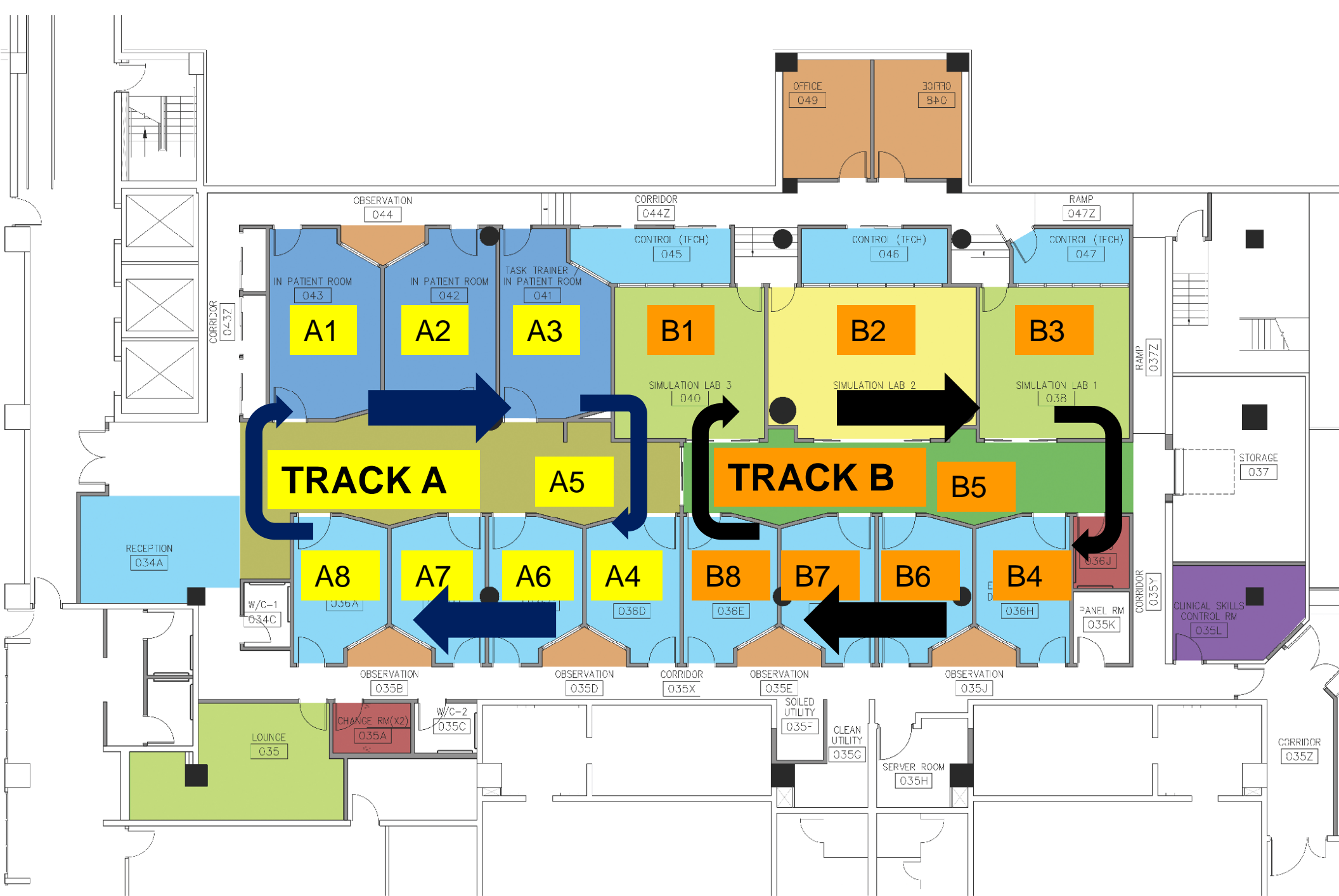
Interviewers

- May or may not be physical therapists
- May be health care providers, faculty, students or community members
- Have been given specific instructions on what they can and can not ask
- Are not aware of your grades or the status of your application
- Will give you one global score
- If you know the interviewer, continue on.

Where does the MMI take place?

The Clinical Learning Simulation Facility (CLSF) in the basement of the John Buhler Research Centre, U of M

Designed for clinical learning and therefore you will see model hospital and clinic rooms, medical equipment, technology and possibly mannequins.



CLINICAL LEARNING & SIMULATION FACILITY

4 types of stations

1. Discussion

2. Acting

3. Collaboration

4. Written

Discussion Stations

An issue will be posted on the station door which you are to discuss with the interviewer.

Interviewers have been provided with background information on each station.

They will engage with you in discussion.

They may or may not ask questions specific to the issue.

Acting Stations

A scenario will be posted on the station door.

Enter the room and engage with the individual in the room as if he/she is the person in the scenario.

An interviewer will also be in the room, evaluating your response.

Collaboration Stations

Instructions will be posted on the station door.

Proceed into the room and do as the instructions indicate.

There will be another individual in the room with whom you must complete a task or activity.

An interviewer will also be in the room, judging your communication and collaboration skills.

Written Station

A question will be posted at the station in the hallway.

Write a response in the text box on the computer provided.

You will be evaluated according to the content, clarity of your response, spelling and grammar.

The Internet will have been disabled.

A hall monitor will be available to assist you with any technical difficulties.

Key points

1. Read the question carefully before entering the room.

Copies of the questions will also be provided in the station rooms.

2. Make short notes for yourself if you wish.
Clipboards and pencils will be provided.

Key points

3. Always answer the question. There is no right or wrong answer.
4. Speak clearly and articulate your ideas as best as you can, based on your knowledge and life experiences.

Practice MMI questions

Preferential Admission (Societal Health Issues in Canada)

Due to the shortage of physical therapists in rural communities, it has been suggested that physical therapy programmes preferentially admit students who are willing to commit to a 2 or 3 year tenure in an under-serviced area upon graduation.

Consider the broad implications of this policy for health and health care costs. For example, do you think the approach will be effective? At what expense? Discuss this issue with the interviewer.

Practice MMI questions

Class Size (Critical Thinking)

Universities are commonly faced with the complicated task of balancing the educational needs of their students and the cost required to provide learning resources to a large number of individuals. As a result of this tension, there has been much debate regarding the optimal size of classes. One side argues that smaller classes provide a more educationally effective setting for students, while others argue that it makes no difference, so larger classes should be used to minimise the number of instructors required.

Discuss your opinion on this issue with the examiner.

Practice MMI questions

Air Travel (Communication Skills)

Your company needs both you and a co-worker (Sara, a colleague from another branch of the company) to attend a critical business meeting in San Diego. You have just arrived to drive Sara to the airport.

Sara (played by an actor) is in the room.

Additional information

All applicants attending interviews will be required to sign a Confidentiality Agreement to ensure the security of interview scenarios and a Audiovisual recording and release form for quality management purposes.

2013 MMI Dates

The MMI for 2013 is scheduled for the weekend of March 2 and 3.

Letters of offer for an interview will be sent out the beginning of February; an immediate reply will be required.

The exact time, date and location of your interview will be indicated on the letter of offer.

MMI Dates

Applicants offered interviews should note that, the MMI will be scheduled only once per year. **Rescheduling, regardless of the reason, cannot be accommodated.**

Requests for accommodation

The Department of Physical Therapy welcome applications from a diverse range of abilities. Please note however, that the activities of PT practice are physically challenging. See the [Essential Skills Document](#) on our website for more details.

Should you require special accommodation for the MMI , please contact the [Chair of Admissions for Physical Therapy](#).

Additional Resources

For specific information sessions on the MMI, including practice opportunities, please contact Career Services at the University of Manitoba at

474 University Centre

Tel: (204) 474-9456 (CST)

Monday to Friday 8:30 a.m. – 4:30 p.m.

<http://umanitoba.ca/student/employment>

Additional Resources

For an audiovisual orientation to the MMI, please visit the link below.

http://media.cc.umanitoba.ca:8080/range_n/faculties/medicine/med_rehab/mmi_mac.mp4

Acknowledgement

We gratefully acknowledge the work of the Michael G. DeGroote School of Medicine at McMaster University for the development, evaluation and on-going enhancements of the Multiple Mini-Interview.

References

- Eva KW, Rosenfeld J, Reiter HI, Norman GR. (2004). An admissions OSCE: The Multiple Mini-Interview. *Medical Education* 38: 314-326.
- Humphrey, S., Dowson, S., Wall, D., Dinakar, V., & Goodyear, H.M. (2008) Multiple mini-interviews: Opinions of candidates and interviewers. *Medical Education*, 42 (2), 207-213.
- Lemay, J.F., Lockyer, J.M., Collin, V. T., & Brownell, A. K. (2007). Assessment on non-cognitive traits through the admissions multiple mini-interview. *Medical Education* 41 (6) 573-579.
- McMaster University. (2009). MMI -Multiple Mini Interviews Operational Guidelines. Hamilton, Ontario, Canada: Author.
- Moreau, K., Reiter, H., & Eva, K. W. (2006). Comparison of aboriginal and non-aboriginal applicants for admissions on the multiple mini-interview using aboriginal and non-aboriginal interviewers. *Teaching and Learning in Medicine*, 18(1), 58-61.

Outline

1. What is the MMI?
2. Why the change to the MMI?
3. The logistics of the MMI
4. Types of stations
5. Key points
6. Practice questions
7. Additional information