

APPLICATION FOR MEMBERSHIP

Subscriptions are paid each year to the General Secretary-Treasurer, or to your National Representative. The yearly dues for regular members are 77 USD or 60 EURO (2008-2010).

There are concessionary rates for students (50%) and scientists from developing countries. Students joining SIL and the Freshwater Biological Association, UK get a further discount of 10%.

For more detailed information about the society and how to join, visit www.limnology.org or simply fill in this form and mail it to:

Prof. Dr. Morten Søndergaard
General Secretary-Treasurer of SIL
c/o Denise Johnson, SIL AA
University of NC at Chapel Hill
SPH, ESE, CB # 7431, Rosenau Hall
Chapel Hill, NC 27599-7431
Email: msondergaard@bi.ku.dk
Email: denisej@email.unc.edu

I wish to become a member of SIL

Name: _____

Title: _____

Email address: _____

Signature: _____

Date: _____

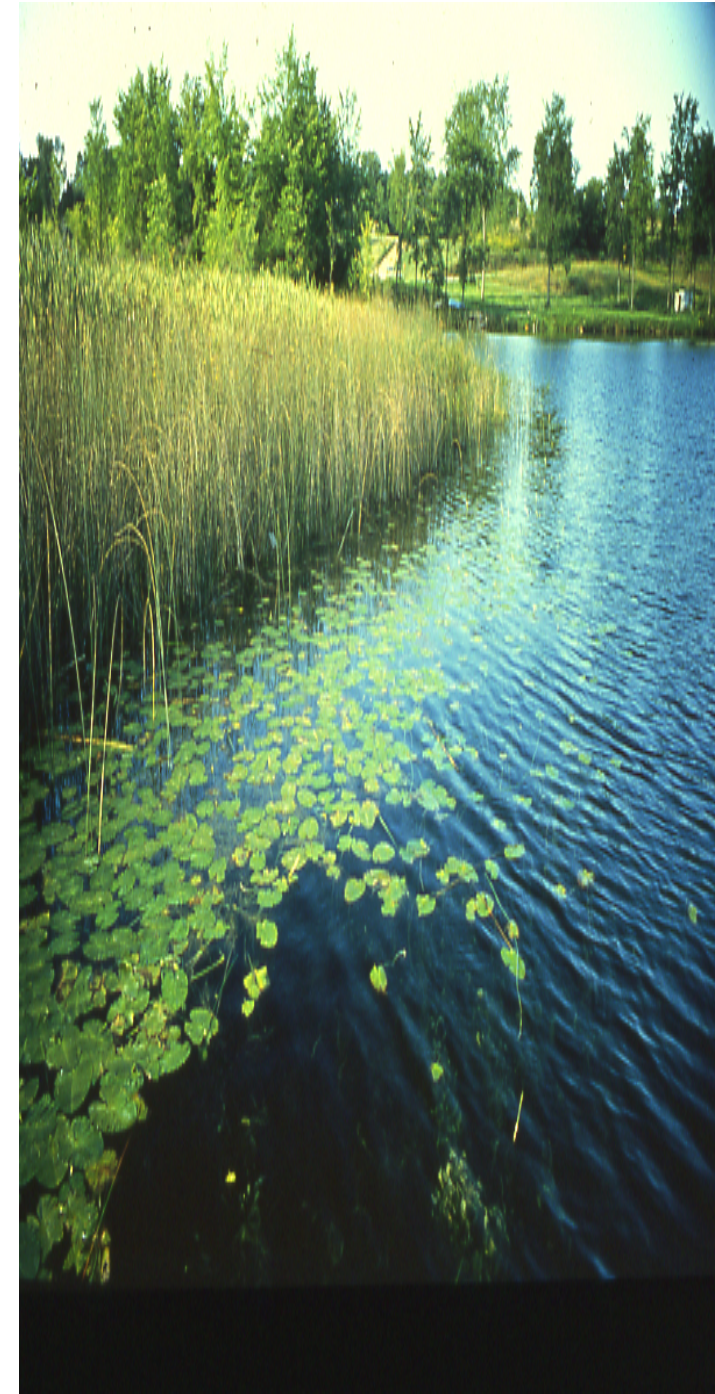
The International Society of Limnology works worldwide to promote the scientific understanding of lakes, rivers, and wetlands and to encourage rational management and protection of these diverse inland aquatic ecosystems using knowledge gained from research.



OBJECTIVES AND GOALS OF SIL

1. To promote the scientific study of all kinds of inland aquatic ecosystems;
2. To understand how these ecosystems arose, function and are maintained;
3. To educate everyone about the value of inland waters for the wellbeing and survival of all organisms, including humans, on Earth and
4. To protect and conserve inland waters ecosystems by promoting and fostering only sustainable use.

**International Society of Limnology
Societas Internationalis Limnologiae (SIL)**





FUNCTIONS AND ACTIVITIES OF SIL

- SIL is an international scientific society. Members come from about 84 countries and increasingly from tropical regions. Scientific credibility is an essential underpinning for SIL.
- SIL is concerned with all aspects of lakes, rivers and wetlands, i.e. all freshwater and inland saline ecosystems.
- Fundamental knowledge of the structure, function and temporal change of inland aquatic ecosystems is essential for the diagnosis and solution of problems. Such knowledge is the key for the protection and sustainable use of these ecosystems worldwide.
- SIL holds congresses every three years in various countries. These well attended congresses have workshops, plenary speakers, contributed sessions, and provide scientific excursions to diverse aquatic habitats in the host country.
- SIL publishes a scientific journal and other scholarly publications. The journal provides a worldwide overview of limnological research and thinking.
- SIL has Working Groups dedicated to exploring new ideas and methods, fostering communication, promoting limnology, and protecting the inherent qualities of all inland aquatic ecosystems.