

Contrabass

Kokopelli's Dance

Commissioned for the UNLV Wind Orchestra, Thomas G. Leslie, Conductor

Nathan Tanouye

Allegro $\text{♩} = 120$

11 13 6

21 25 4 3

32

37 *f*

42 10 2 *sfz* *f*

57 59 **Poco meno mosso** *poco rit.* *sfz* *f* *rit.*

61 **Moderato** ($\text{♩} = \text{c. } 108$) 2 2 *rall.*

69 *a tempo* 73 3 *a tempo* *rall.*

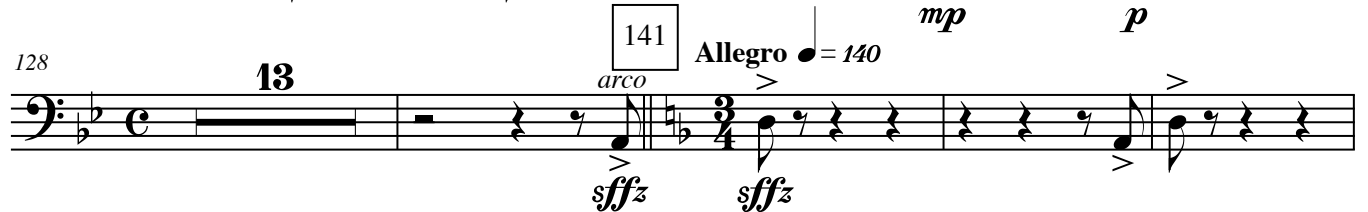
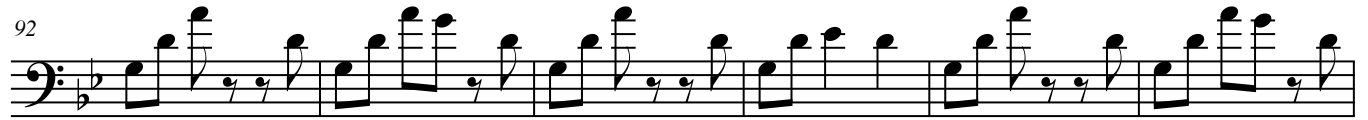
77 5

2

86

pizz.

Kokopelli's Dance-Contrabass



161

pizz.

167



173



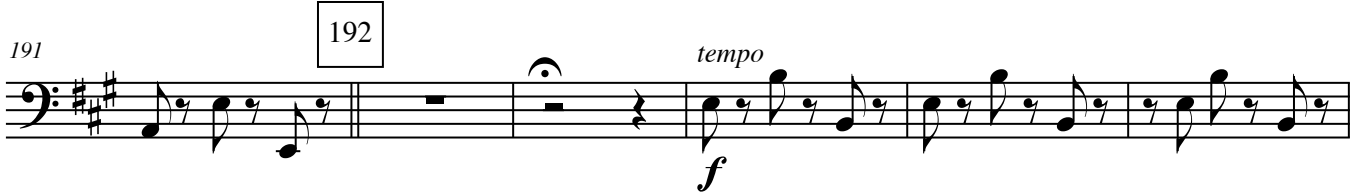
179



185



191



197



202



208



213



218



224



Kokopelli's Dance-Contrabass

2

mp cresc. poco a poco *fff*

241

247

sfz *sfz* *sfz* *sfz*

Detailed description: This musical score is for the Contrabass part of 'Kokopelli's Dance'. It consists of three staves. The first staff (measures 231-240) begins with a mezzo-piano (*mp*) dynamic and a crescendo ('cresc. poco a poco') leading to fortissimo (*fff*) by measure 240. It features a series of dotted half notes, a double bar line with a '2' above it, and a triplet of eighth notes. The second staff (measures 241-246) starts at measure 241 and includes various rhythmic patterns such as eighth and sixteenth notes, some with accents, and a change to 3/4 time. The third staff (measures 247-250) begins at measure 247 and features four accented eighth notes, each marked with a fortissimo (*sfz*) dynamic, followed by rests and a final accented eighth note.