

Livelihood interviews – Paraty Project



General summaries – October 2010

Coordination of the Livelihood interviews: Natalia Hanazaki (UFSC)

Field team: Laura Cavechia, Mariana Giraldi, Luciana Araujo, Ivan Martins, Fernanda Bueloni, Rodrigo de Freitas, Luziana Silva, Carlos Idrobo, Lydia Carpenter, Nivaldo Peroni, Natalia Hanazaki

Data collected from June 28 – July 8 2010

Summary of 350 interviews

This report contains some of the results of interviews conducted in different communities in the municipality of Paraty, RJ, within the subproject on livelihoods and food security (the project "Community-based resource management and food security in coastal Brazil"). We present some of the general results of interviews with a sample of households which represent a snapshot of some aspects of local livelihoods. Importantly, this picture is partial and has all the limitations of interviews that were done in a short period of time.

Table 1 – General summary

Community	previously estimated HH number	Targeted sample size	Number of HHs sampled	Average duration	Number of men	Number of women	Total sampled population
Barra Grande	318	76	76	23 min	150	159	309
Ilha do Araujo	118	54	54	24 min	104	111	215
Ponta Negra	48	32	32	22 min	72	68	140
Praia do Sono	112	53	40*	25 min	109	69	178
Praia Grande	80	44	44	23 min	100	93	193
Tarituba	134	57	34**	22 min	56	68	124
Trindade	228	70	70	21 min	124	104	228
Total geral	1038	386	350		715	672	1387

*11 refusals, 17 closed houses, 13 empty houses

**more than 20 closed or empty houses. The previously total HH number was clearly overestimated; we counted less than 70 HHs (total)

1. ABOUT THE HH

Figure 1. How long have you and your family lived in this village? (years)

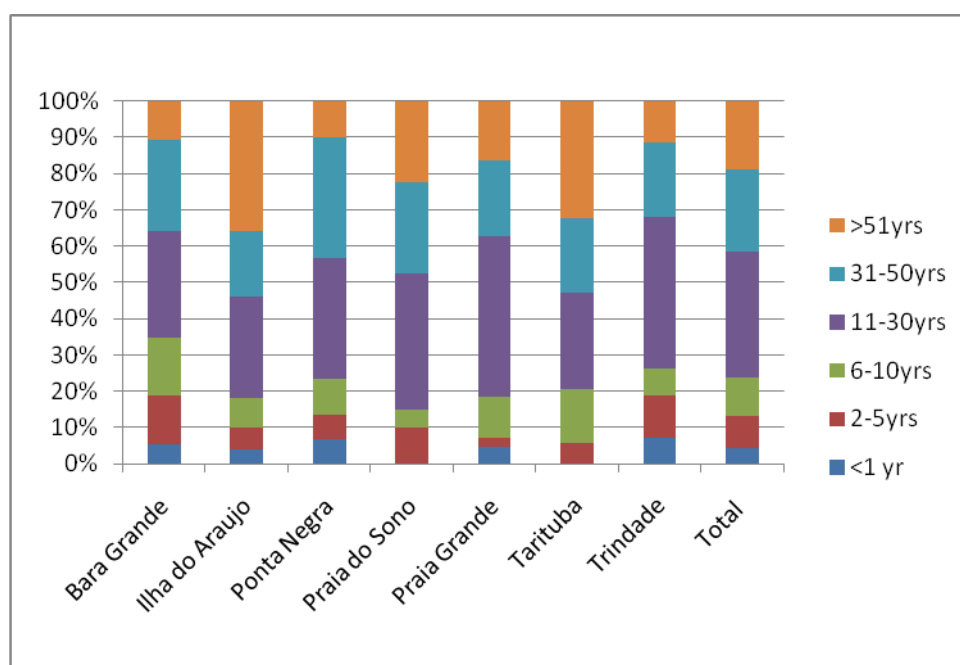


Figure 2. How many people live in your household (number of HHs, N=350)

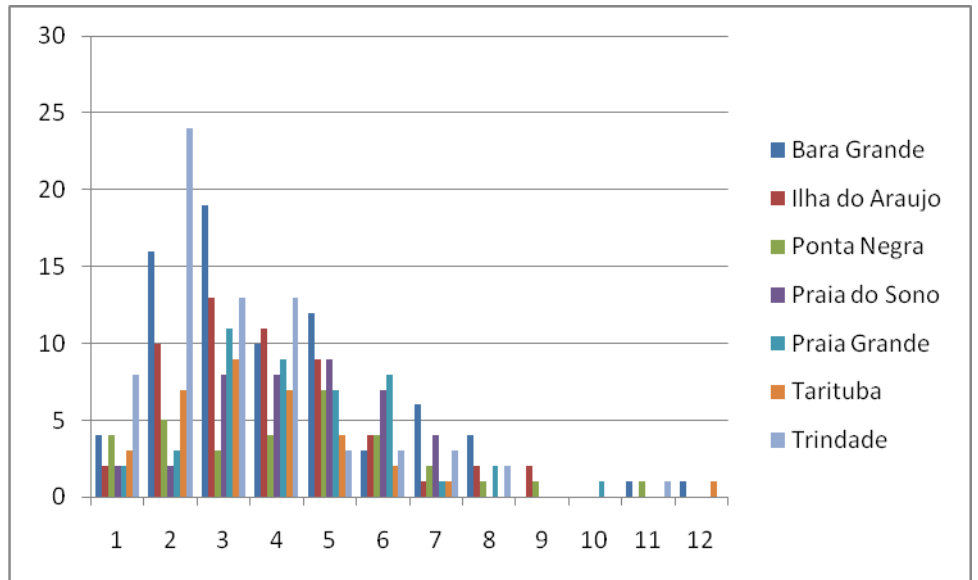


Figure 3. Family members generating income

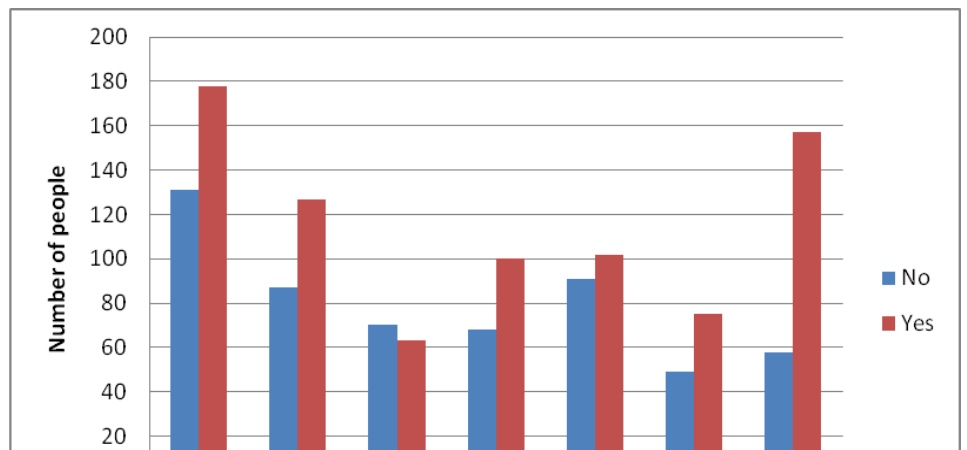
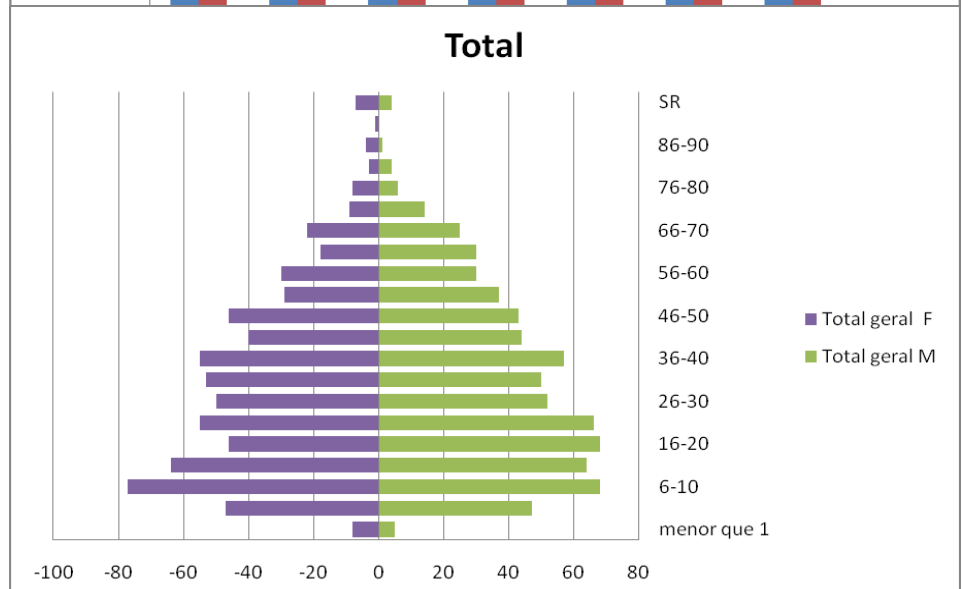
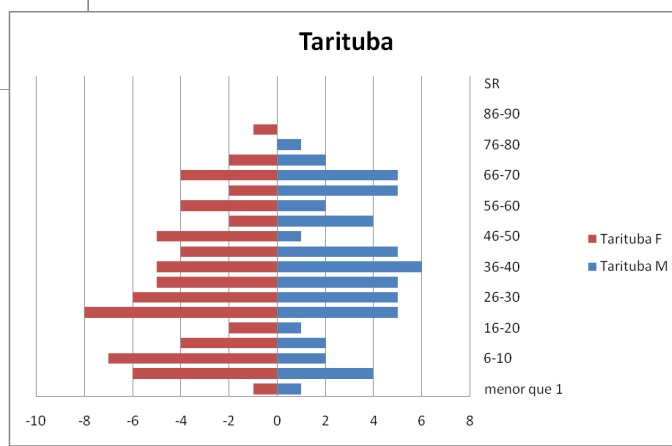
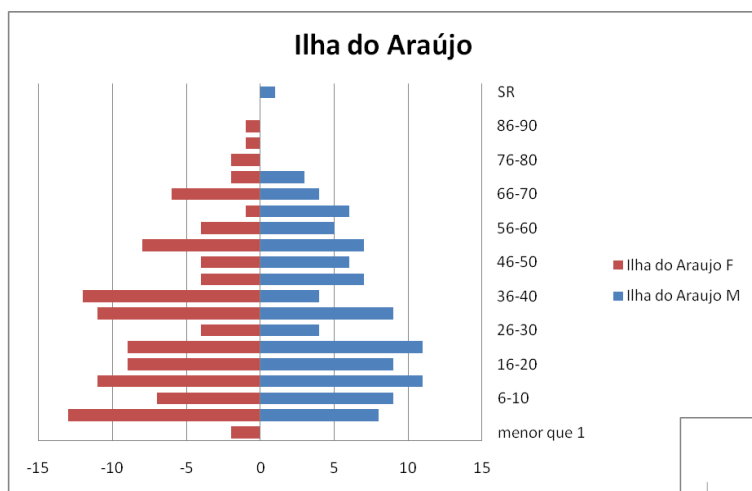
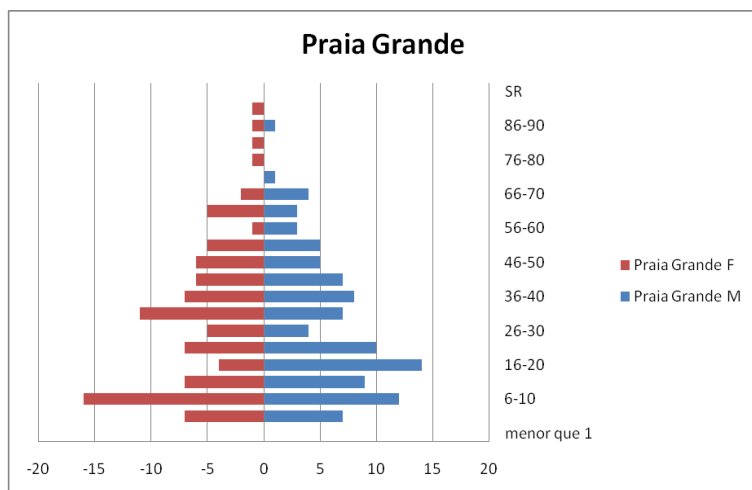
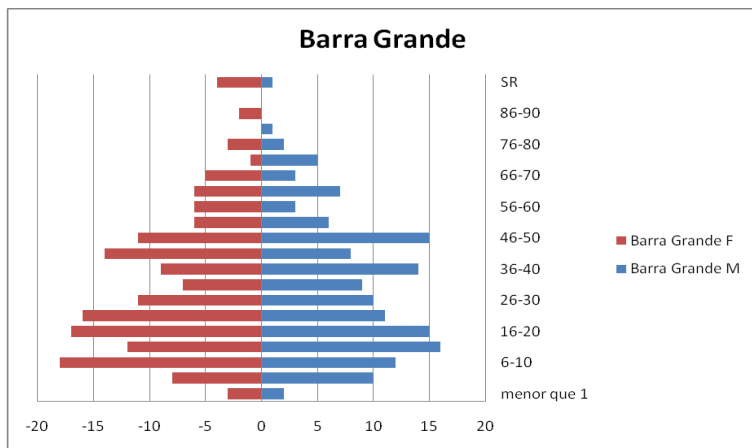


Figure 4. Age pyramid, all data. Obs: F=female; M=male; “menor que 1” = less than 1 yr old. Please ignore the “-” symbol.





Figures 5-10. Age pyramids per community. Obs: F=female; M=male; “menor que 1” = less than 1 yr old. Please ignore the “-” symbol.



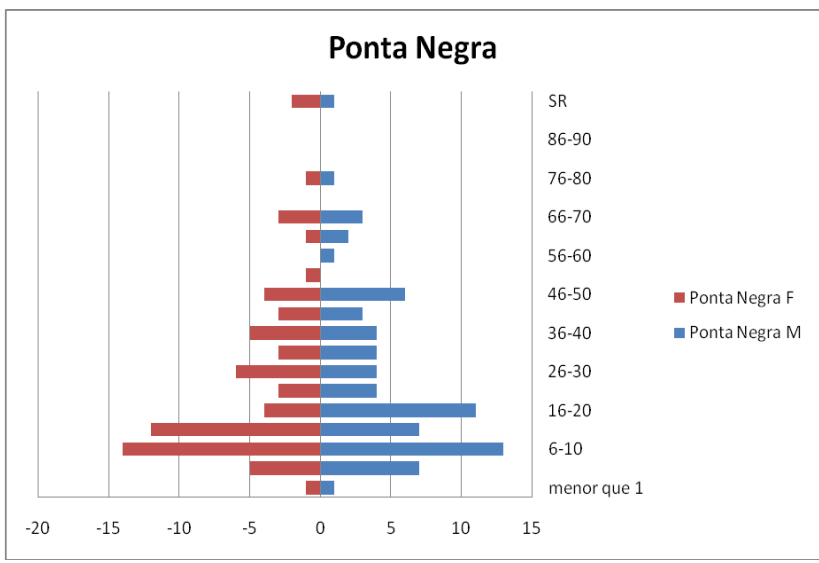
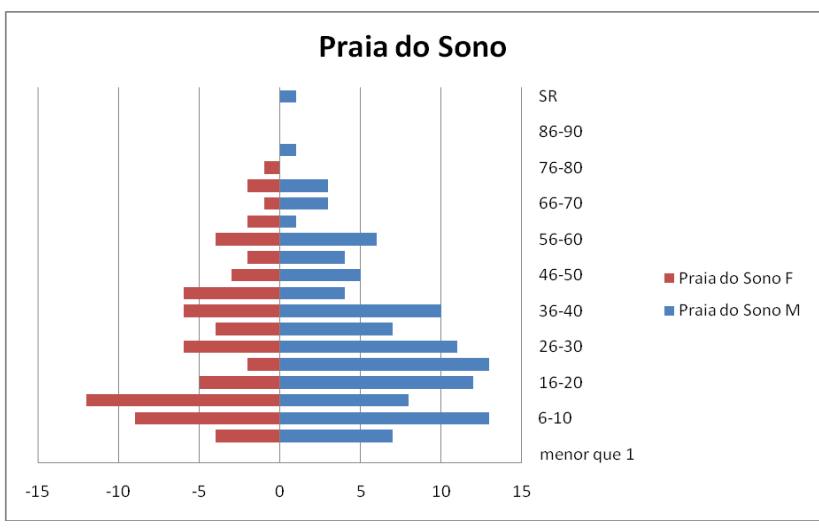
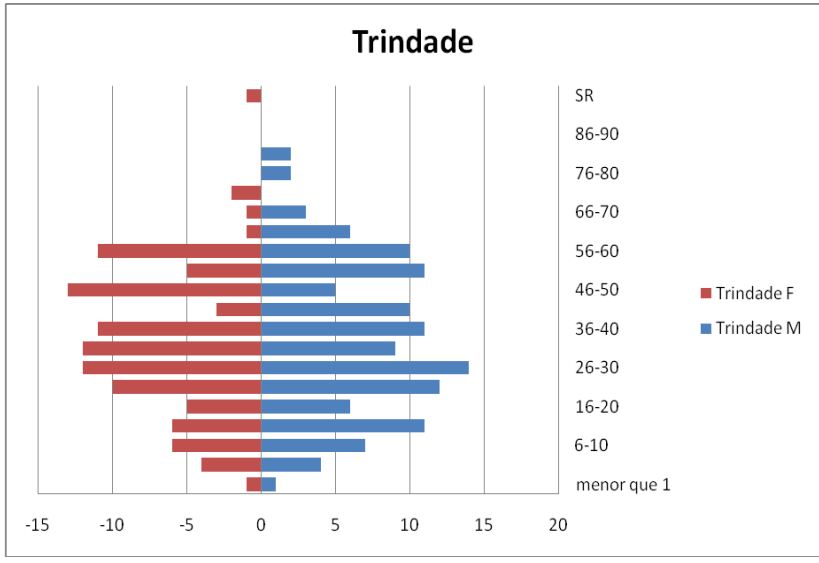


Figure 11 – Main economic activity of the HH (declared; open question)

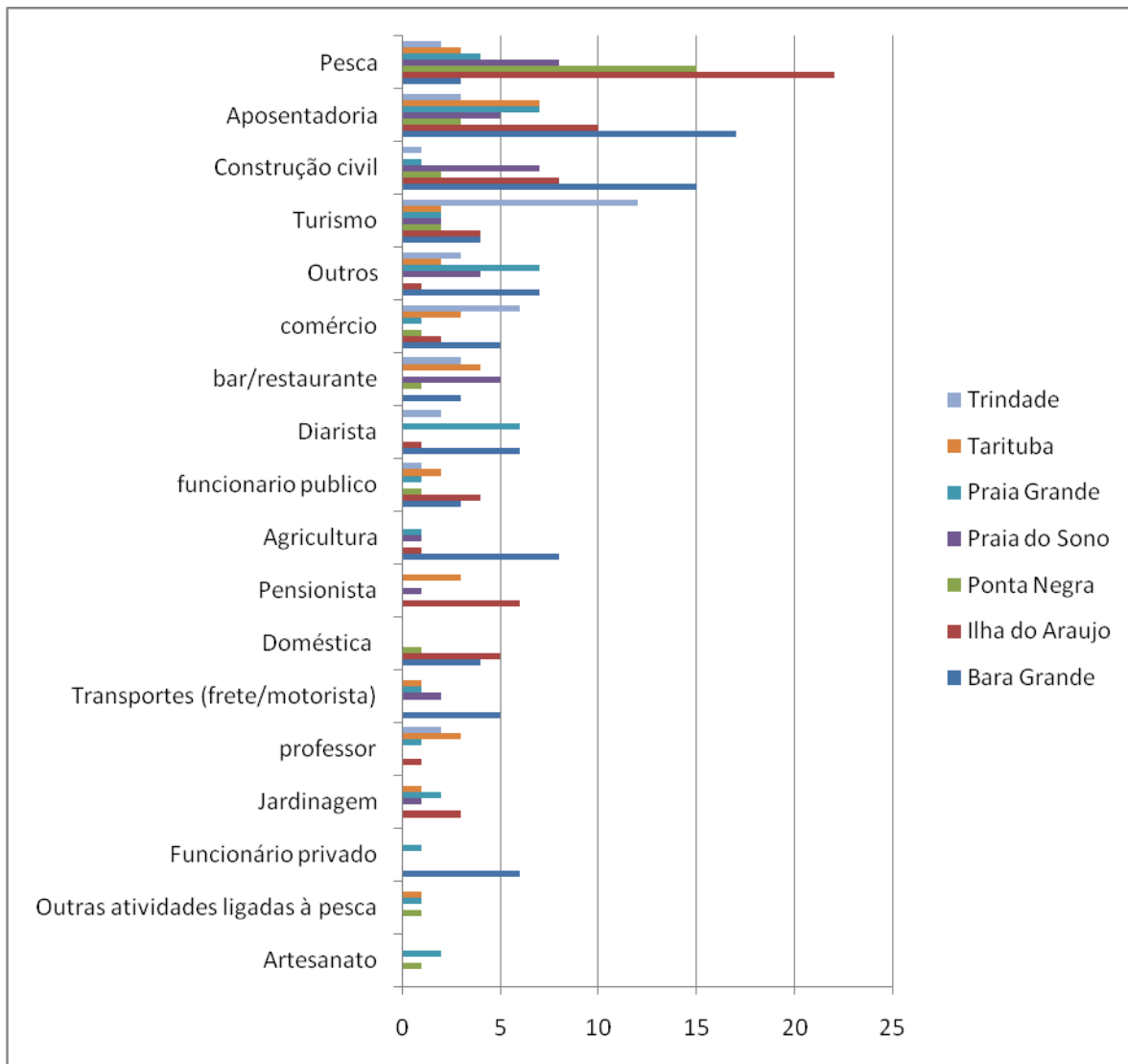


Figure 12 – All the activities that take place within the household (from a list), for all communities



2. FISHING

Table 2 – Number of HHs with fishers, number of people who fish (maximum 3 per HH, see Table 2 from questionnaire), number of HHs with boats and motors.

	number of HHs with fishers	male	female	total	number of HHs with boat	number of HHs with motor
Barra Grande	14 (18%)	13	8	21	5	3
Ilha do Araujo	50 (93%)	47	5	52	33	19
Ponta Negra	24 (75%)	31	3	34	11	7
Praia do Sono	29 (72%)	47	1	48	20	12
Praia Grande	14 (32%)	14	3	17	9	5
Tarituba	12 (35%)	14		14	9	8
Trindade	32 (46%)	34	3	37	19	14
Total	175 (50%)	200	23	223	106	68



Figure 13 – When do you fish? (number of answers, N=223)

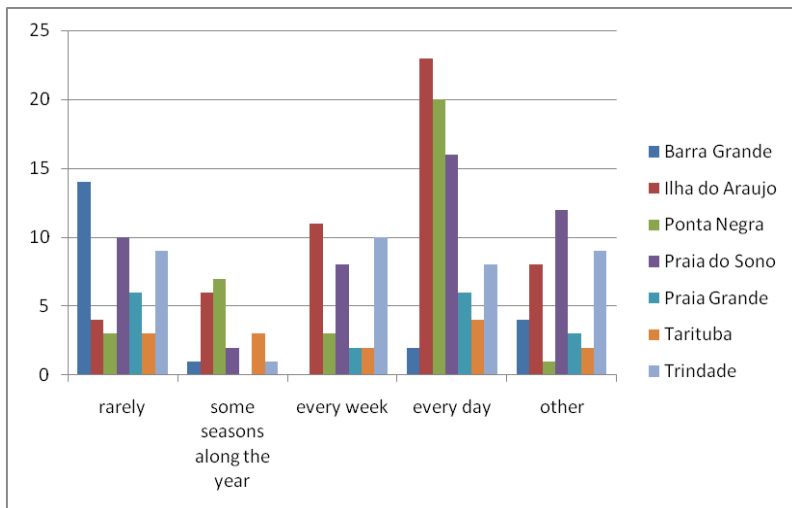


Figure 14 – Type of fishing activity: post-classification made by the interviewer (number of answers, N=223)

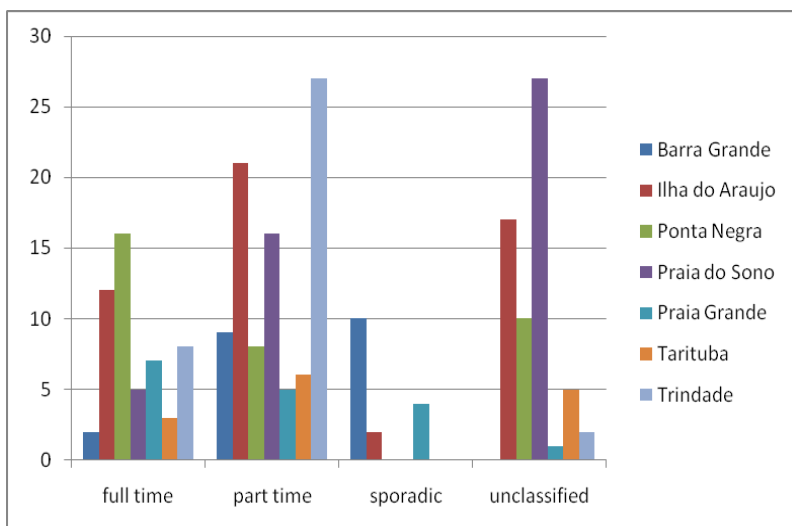
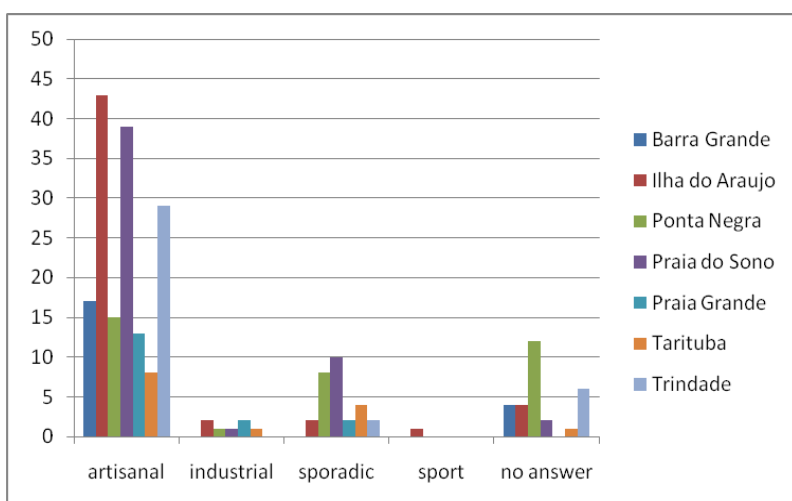


Figure 15 – Type of fishing activity: self-perception (number of answers, N=223)



3. MICROECONOMY



Table 3 - Have you borrowed money in the last two years?

Community	No	Yes. Family	Yes. Middlemen	Yes. Fish markets	Yes. Banco do Brasil	Yes. Other banks	Yes. Other people (excluding middlemen)	Other	No answer	Total
Barra Grande	58	2	1		2	11		2		76
Ilha do Araujo	38	1		1	2	10			2	54
Ponta Negra	22	3			1	3	1	1		31
Praia do Sono	25	4	1		1	6			3	40
Praia Grande	33	1	1		2	8				45
Tarituba	25					6		3		34
Trindade	50	4			1	14		3		72
Total	251	15	3	1	9	58	1	9	5	352

Table 4 – You currently have any debt?

Community	No	Less than R\$ 1.000,00	Between R\$ 1.000,01 and R\$ 5.000,00	Between R\$ 5.000,01 and R\$ 15.000,00	More than R\$ 15.000,01	other	No answer	Total
Barra Grande	36	14	13	5	1	1	6	76
Ilha do Araujo	23	21	8	2				54
Ponta Negra	14	13	3				1	31
Praia do Sono	23	6	9				1	40
Praia Grande	22	10	9	2			1	44
Tarituba	17	6	6	1	3		1	34
Trindade	36	7	13	6	7		1	70
Total	171	77	61	16	11	6	7	349

4. FOOD PRODUCTION

Figure 16 – Percentage of HHs producing different food items (N=350)

