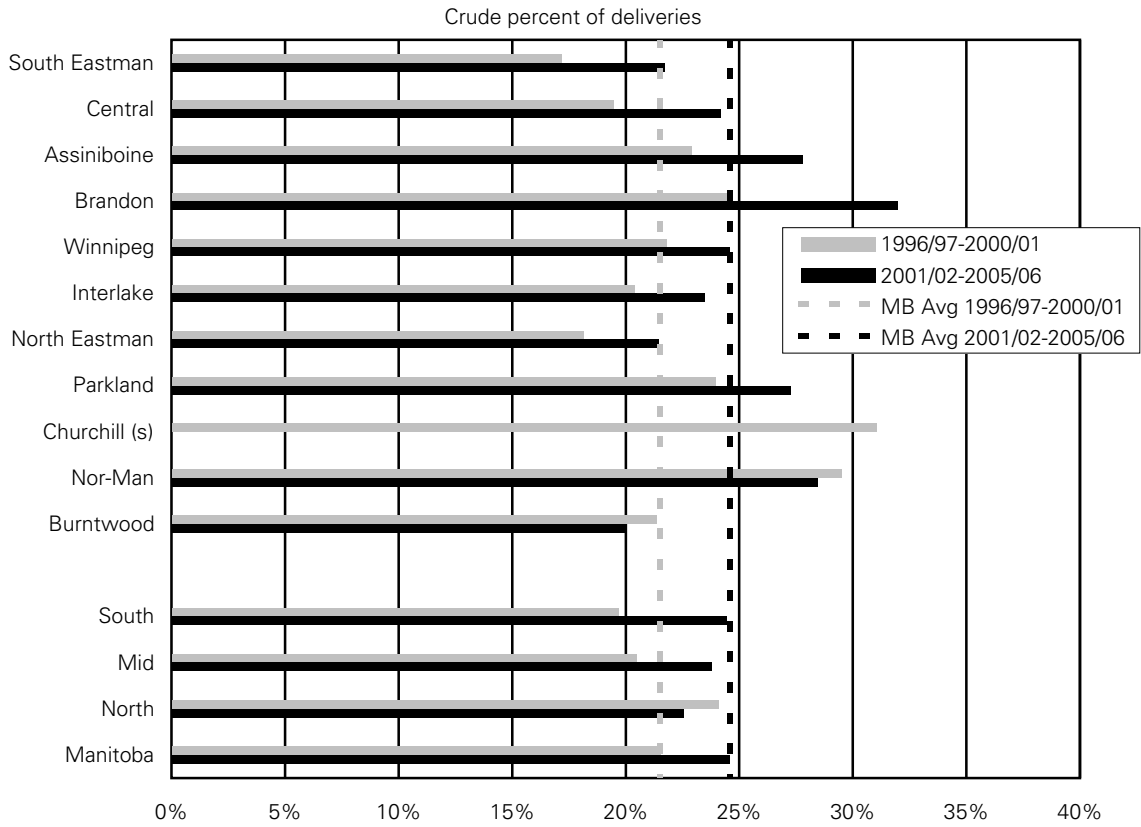


Figure A.3.32: Caesarean Section Rate of Women Aged 30-39 by RHA

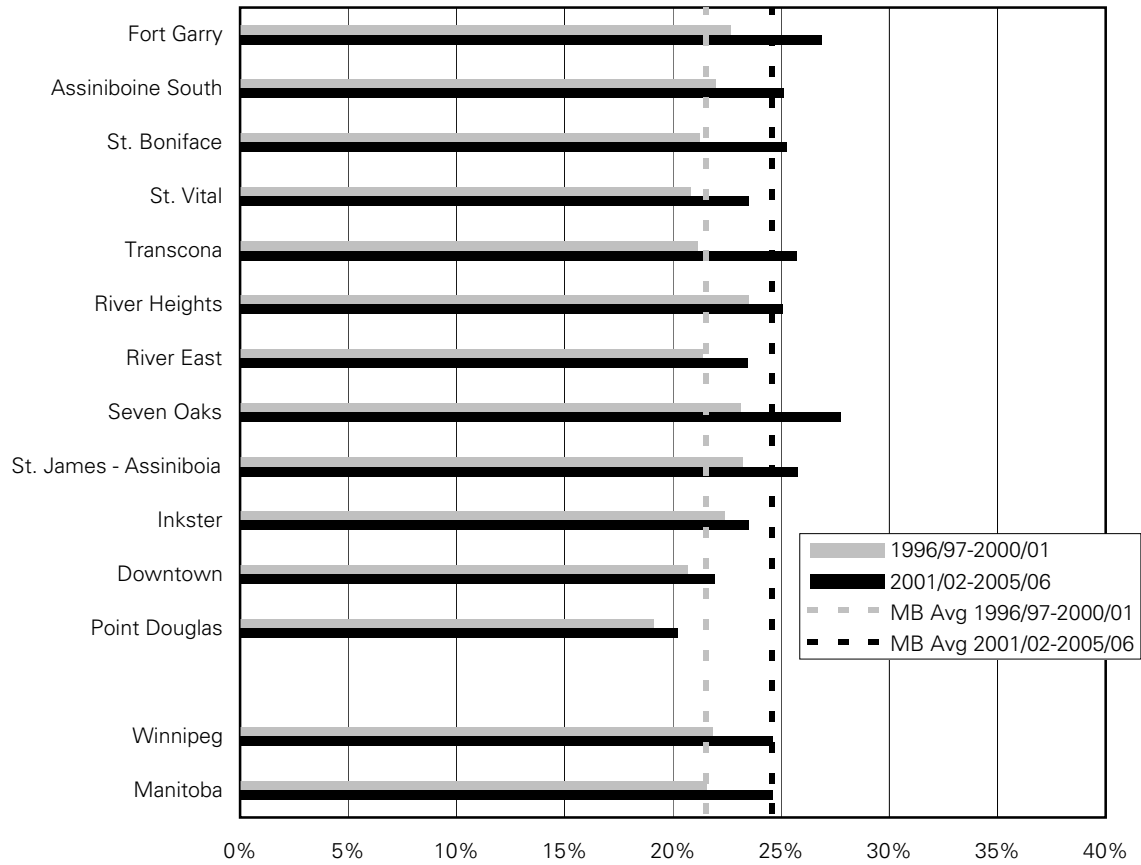


Note: Significance testing is not available
 's' indicates data suppressed due to small numbers

Source: Manitoba Centre for Health Policy,

**Figure A.3.33: Caesarean Section Rate of Women Aged 30-39
by Winnipeg Community Area**

Crude percent of deliveries



Note: Significance testing is not available
's' indicates data suppressed due to small numbers

Source: Manitoba Centre for Health Policy, 2008

Table A.3.10: Caesarean Section Rate of Women Aged 30-39

Region	Caesarean Section Rates			
	Number Observed per Year	CRUDE rate percent	Number Observed per Year	CRUDE rate percent
	1996/97-2000/01		2001/02-2005/06	
South Eastman	40.4	17.2%	51.8	21.7%
Central	83.2	19.5%	107.2	24.2%
Assiniboine	51.0	22.9%	63.2	27.8%
Brandon	42.6	24.5%	54.2	32.0%
Winnipeg	664.6	21.8%	726.0	24.6%
Interlake	59.8	20.4%	68.0	23.5%
North Eastman	29.4	18.1%	31.8	21.5%
Parkland	28.2	24.0%	33.4	27.2%
Churchill	1.8	31.0%		
Nor-Man	29.4	29.5%	28.0	28.5%
Burntwood	45.2	21.3%	47.4	20.0%
South	174.6	19.7%	222.2	24.4%
Mid	117.4	20.5%	133.2	23.8%
North	76.4	24.1%	76.4	22.5%
Manitoba Public Trustee	1075.8	21.5%	0.0	24.6%

blank cells = suppressed

Source: Manitoba Centre for Health Policy, 2008

Region	Caesarean Section Rates			
	Number Observed per Year	CRUDE rate percent	Number Observed per Year	CRUDE rate percent
	1996/97-2000/01		2001/02-2005/06	
Fort Garry	74.6	22.7%	93.2	26.9%
Assiniboine South	33.4	21.9%	40.6	25.1%
St. Boniface	47.4	21.2%	65.8	25.2%
St. Vital	65.0	20.8%	69.2	23.5%
Transcona	32.6	21.1%	34.8	25.7%
River Heights	72.2	23.5%	75.0	25.1%
River East	85.4	21.4%	87.0	23.5%
Seven Oaks	59.0	23.1%	69.2	27.7%
St. James - Assiniboia	58.8	23.2%	61.6	25.7%
Inkster	33.4	22.4%	28.4	23.5%
Downtown	72.4	20.7%	69.8	21.9%
Point Douglas	30.4	19.1%	31.4	20.2%
Winnipeg	664.6	21.8%	726.0	24.6%

blank cells = suppressed

Source: Manitoba Centre for Health Policy, 2008