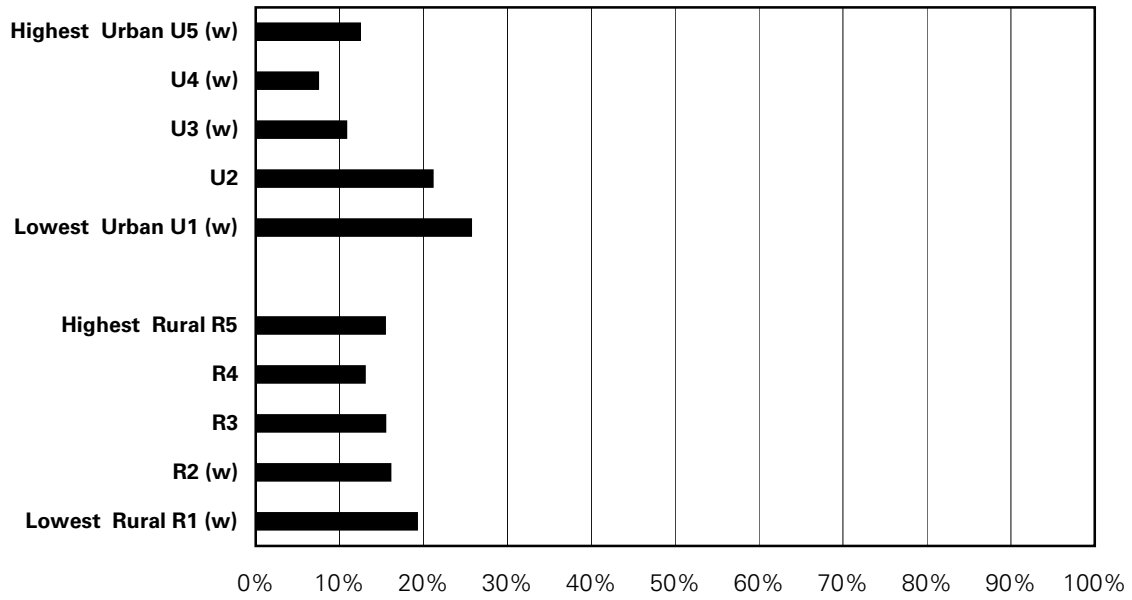


Figure A.11.9: Smoker Rates by Income Quintile

Sex-adjusted percent of sample from the CCHS 1.1, 2.1, 2.2 & 3.1 cycles combined (2001, 2003, 2004 & 2005)
Children ages 12-19 who smoked 100 or more cigarettes in their lifetime



'**' indicates that area's rate is significantly different from the Manitoba average

'w' indicates a warning - rates are highly variable; interpret with caution

's' indicates data suppressed due to small numbers

Total Manitoba sample size = 557

Source: Manitoba Centre for Health Policy, 2008