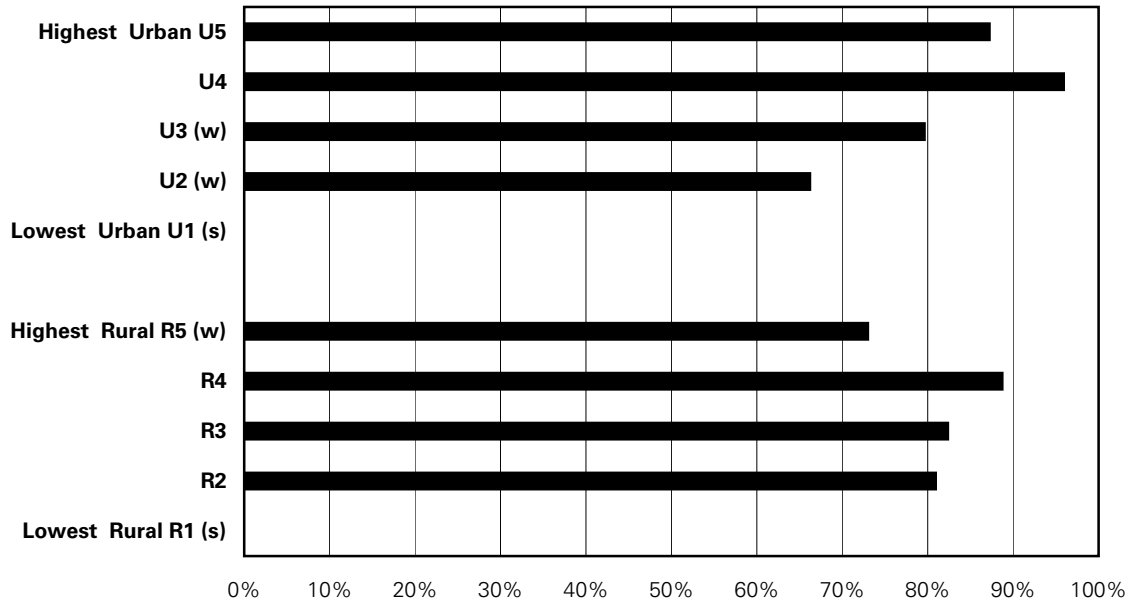


Figure A.11.42: Reported Birth Control Pill or Injection Use by Income Quintile

Crude percent of sexually active females from the CCHS 2.1 & 3.1 cycles combined (2003 & 2005)
 Females aged 15-19 who reported birth control pill or injection use



'**' indicates that area's rate is significantly different from the Manitoba average

'w' indicates a warning - rates are highly variable; interpret with caution

's' indicates data suppressed due to small numbers

Total Manitoba sample size = 147

Source: Manitoba Centre for Health Policy, 2008