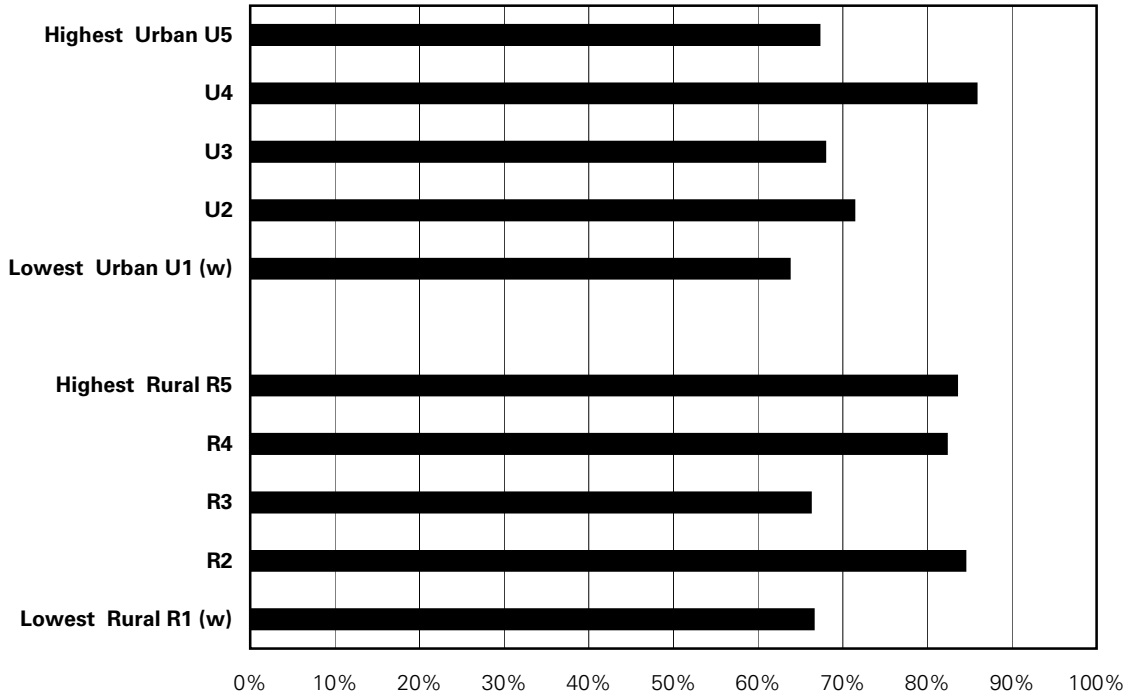


Figure A.11.37: Condom Use by Income Quintile

Sex-adjusted percent of sexually active sample from the CCHS 2.1 & 3.1 cycles combined (2003 & 2005)
 Adolescents aged 15-19 years who reported condom use during last sexual activity



'**' indicates that area's rate is significantly different from the Manitoba average

'w' indicates a warning - rates are highly variable; interpret with caution

's' indicates data suppressed due to small numbers

Total Manitoba sample size = 281

Source: Manitoba Centre for Health Policy, 2008