

# Taking it to the Streets

## What Administrative Data from Health, Education and Family Services Enables

**MCHP 20<sup>th</sup> Anniversary Conference:  
Going for the Gold**

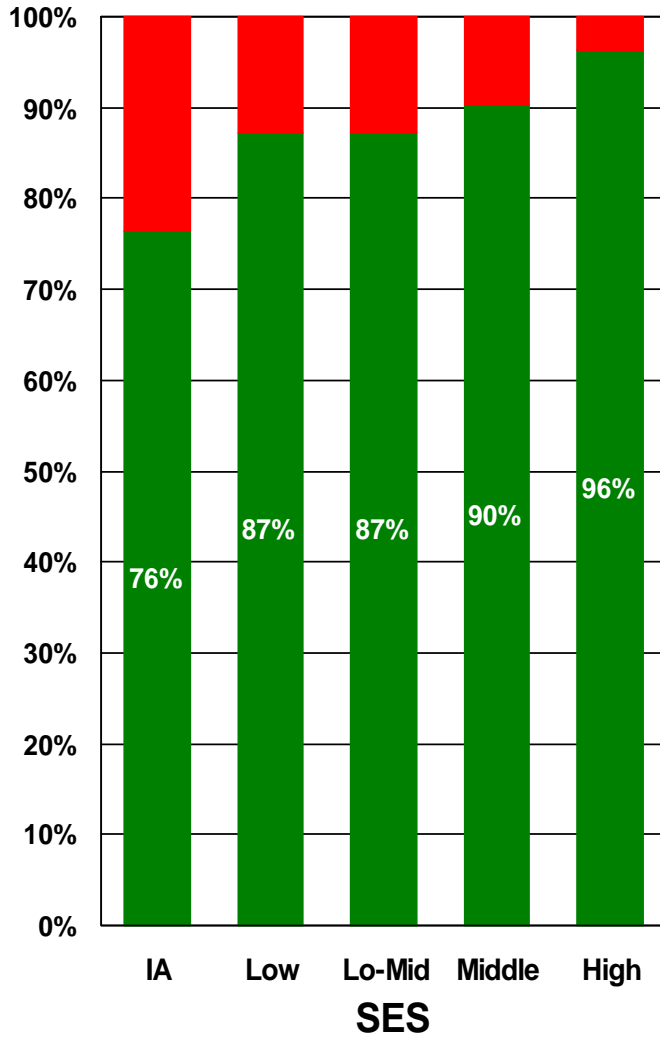
**Winnipeg, Manitoba, March 8, 2010**



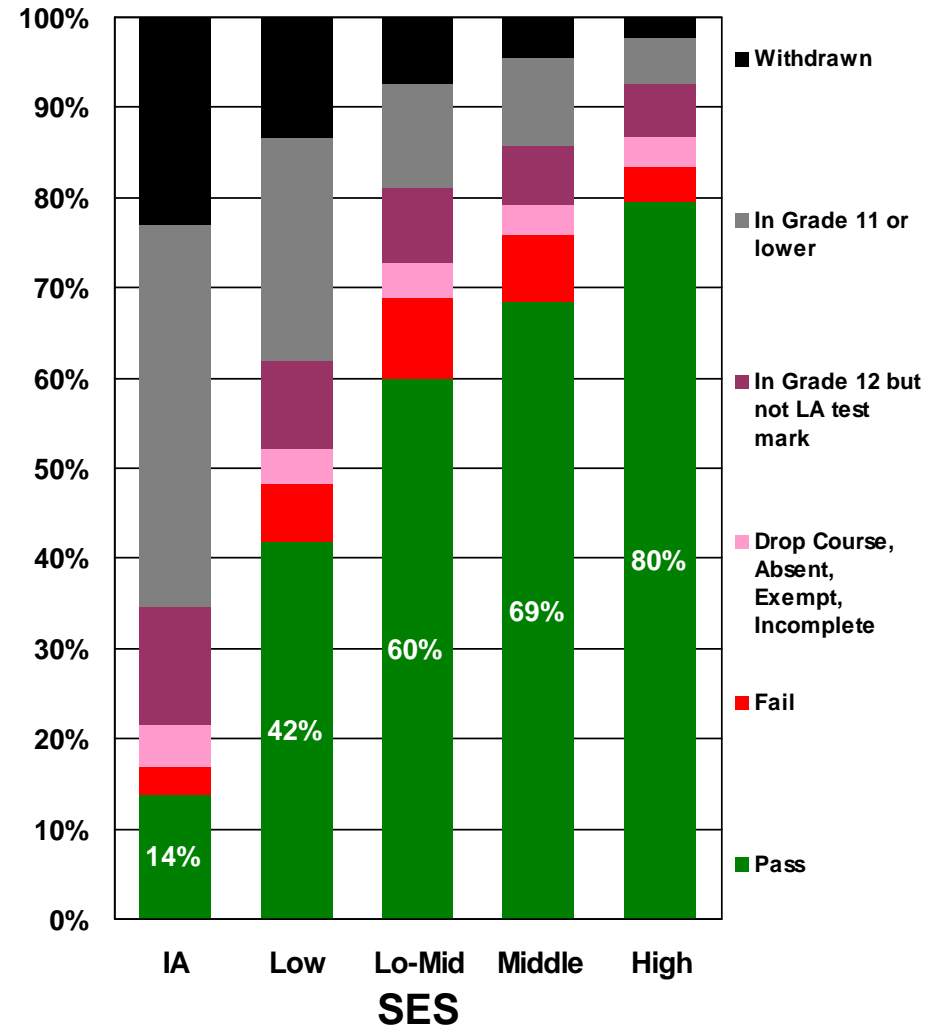
# Getting the "True" Story

## Grade 12 Performance by Socioeconomic Status (SES)

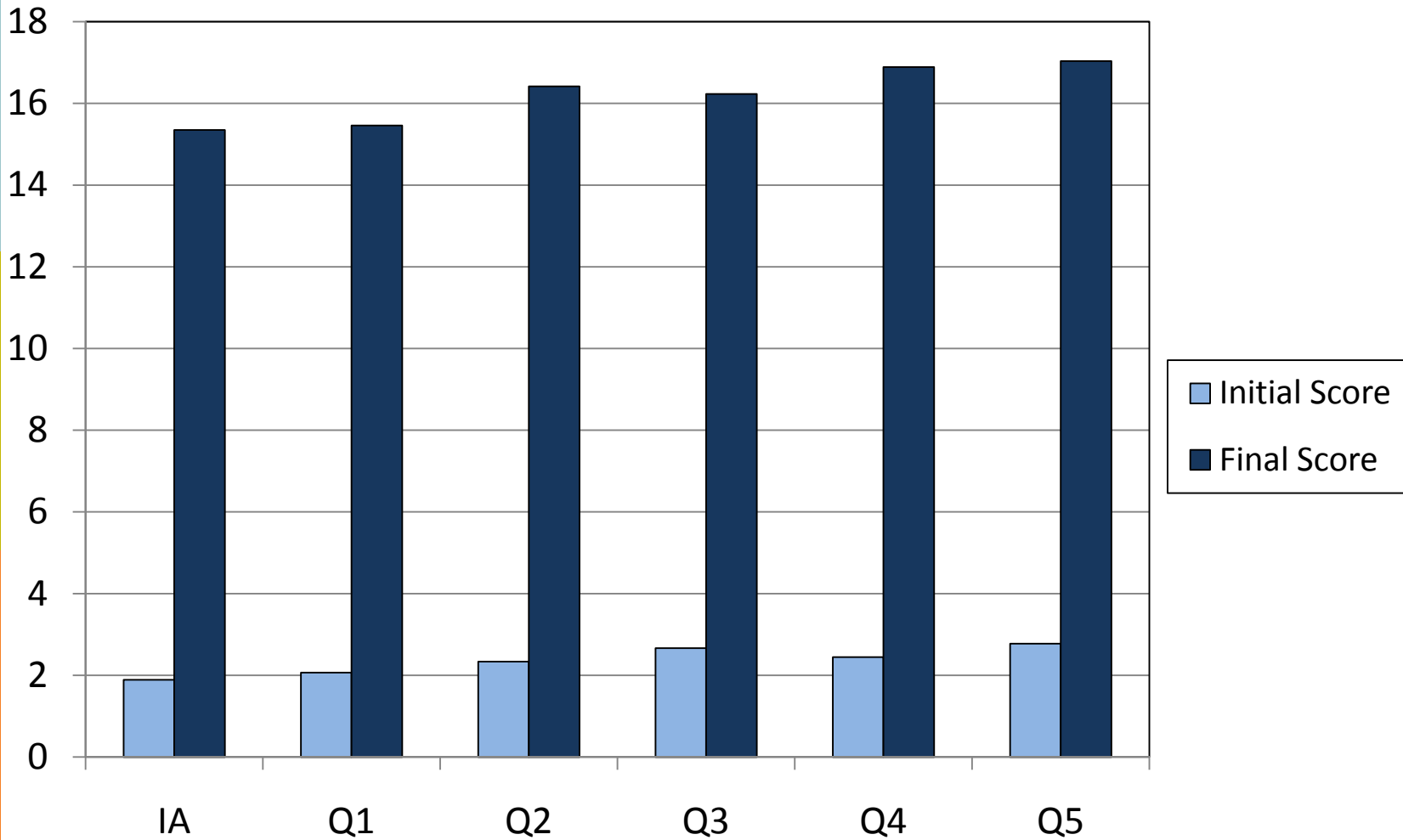
Pass/Fail rates of test writers



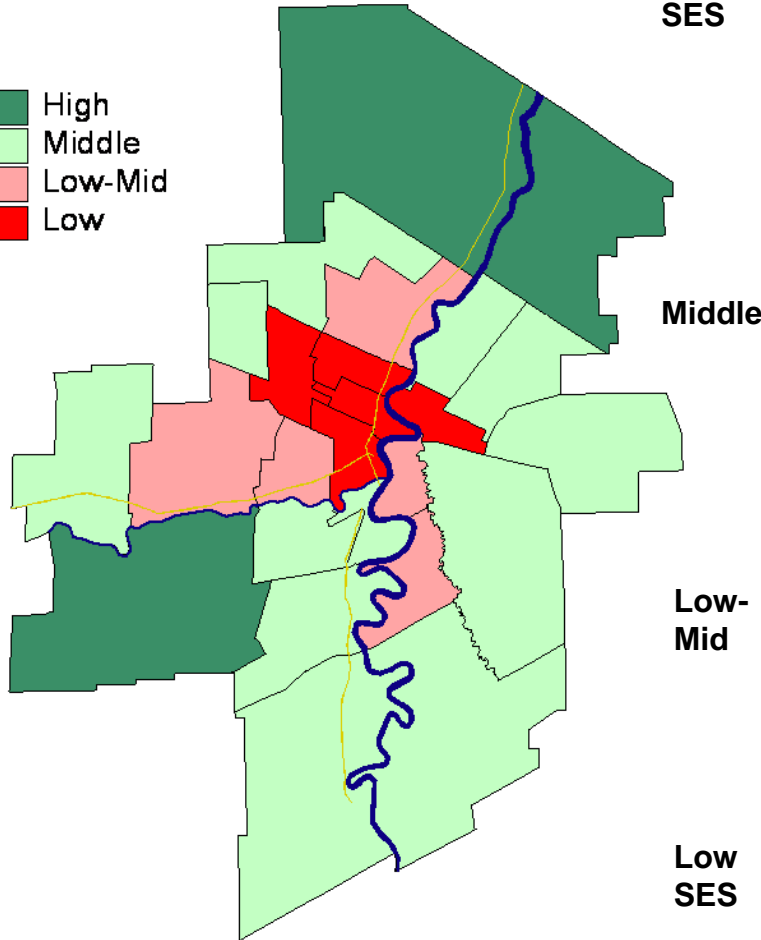
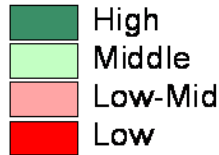
17/18 year olds who should have written



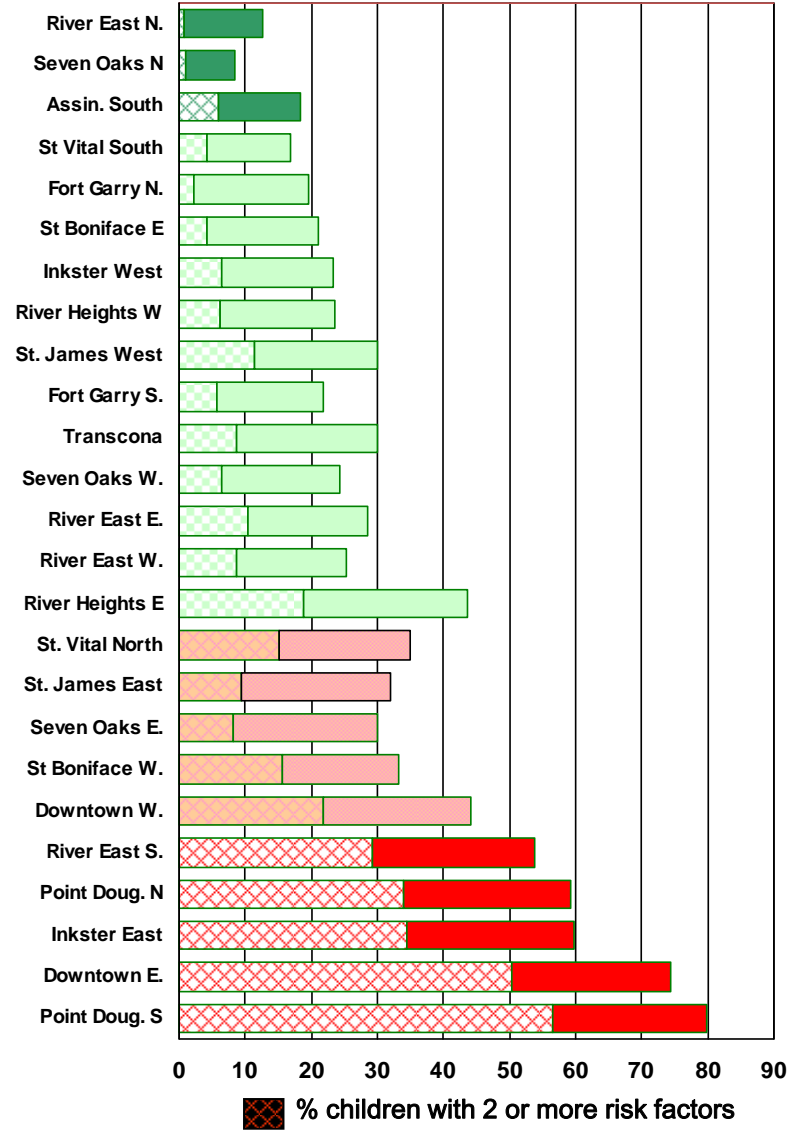
# Can they Recover? Track Individual Scores: Grade 1 Mean Reading Level At Start and End of Literacy Training By Socioeconomic Status



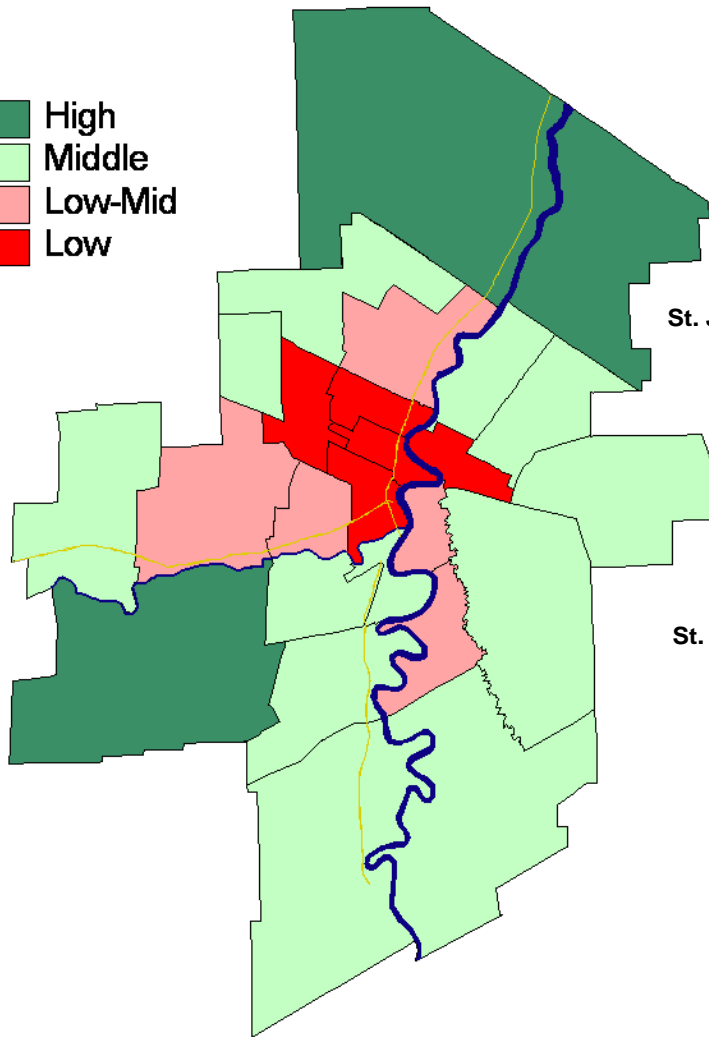
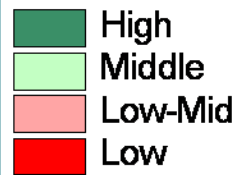
## Winnipeg Neighbourhoods by Socioeconomic Status



## Percent Children at Risk by Winnipeg Neighbourhood (per 100 children)



## Winnipeg Neighbourhoods by Socioeconomic Status



## Child Care Spaces for 0 to 12 year olds, by Winnipeg Neighbourhoods, 2006 (per 1000 children)

