

Department of Community Health Sciences

Decadal Report

April 1, 2001 - March 31, 2011



Faculty of Medicine



UNIVERSITY
OF MANITOBA

About the cover photo:

Ribbon cutting ceremony of the 1st non-hospital based Dialysis Unit in Canada in Garden Hill First Nations, Manitoba. With the institution of a local dialysis unit patients who spent years in Winnipeg were repatriated home to receive treatment. Patients arrived in January of 2005 to begin treatment. Presently (2010) a number of patients are now on home haemodialysis with the support of the Unit.

Faculty members Gladys Stewart and Dr. Joseph Kaufert along with interested Med 1 students and Winnipeg Harvest worked collaboratively to present a workshop at the Food Banks Canada conference on June 9th titled "Linking those you help with the Health Care Community".

43rd Annual Fall Convocation held October 20, 2010, CHS Graduates – (L to R) Rachelle Briere, MPH; Hazel Rona, MSc; Diane Schuster, MSc; Dr. Robert Tate, Director of the Graduate Program; Joykrishna Sarkar, MSc, and Gayle Restall, PhD. Rhonda Campbell, MSc was present at convocation but missed the "photo-op".

On the 21st of July 2010 the Section of First Nations, Métis, and Inuit Health held a Pipe Ceremony welcoming Dr. Brian Postl as the new Dean of Medicine

Table of Contents

1. Greetings	1
2. Mission.....	3
3. In Memoriam	5
4. Departmental Academic	9
4.1 Full-Time Faculty/Unit Heads.....	9
4.2 Part-Time Faculty	9
5. About the Department	11
5.1 CHS Support Staff	11
5.2 Financial Overview 2001-2011	11
5.3 CHS Organizational Chart	13
6. Educational Programs	15
6.1 Undergraduate Medical Education Program (UGME).....	15
6.2 Graduate Program	16
6.3 Residency in Public Health and Preventive Medicine.....	22
7. Department Awards.....	25
7.1 Jack Hildes Memorial Fund.....	25
Recipients	25
7.2 David G. Fish Memorial Scholarship	26
Recipients	26
7.3 Dr. Christine Egan Memorial Scholarship	26
Recipients	26
7.4 Evelyn Shapiro Award for Health Services Research.....	27
Recipients	27
8. Departmental Units.....	29
8.1 Section of First Nations, Métis, and Inuit Health:.....	29
8.1a Centre for Aboriginal Health Education	29
8.1b Manitoba First Nations Centre for Aboriginal Health Research	30
8.1c J.A. Hildes Northern Medical Unit.....	32
8.1d. The Inuit Health Program	37
8.2 Centre for Global Public Health.....	43
8.3 Manitoba Centre for Health Policy.....	45
8.4 Biostatistical Consulting Unit.....	48
8.5 The Manitoba Follow-up Study (MFUS)	49
9. Training Programs	51
9.1 Western Regional Training Centre (WRTC).....	51
9.2 Aboriginal Capacity and Development Research Environment	52

9.3 CIHR International Infectious Disease & Global Health Training Program52

10. Meet the Faculty Members.....55

Appendix A: CHS Colloquium Series (April 2009 - March 2011)79

Community Health Sciences

2001-2011 Report



1. Greetings

This report reflects the highlights of the activities within the Department of Community Health Sciences (CHS) from April 1, 2001 to March 31, 2011. Compiling it has provided us with an opportunity to reflect on the achievements of staff, faculty and students; on the excellence in research and teaching; on our commitment to First Nations, Métis, and Inuit people, and to remember our colleagues and friends who have passed away.

The department has participated in a departmental review, accreditation and program reviews in all its teaching programs. This has contributed to our ability to move ahead and make changes. There has been an increase in staffing. In 2001, CHS had 25 full-time academic staff and over 57 part-time academic staff members who have primary appointments in the teaching hospitals, regional health authorities, other faculties, and government agencies. There were also 75 support staff members and 19 research associates. In 2011, CHS has 32 full-time academic staff and over 104 part-time academic staff members with 105 support staff and 15 research associates/post-doctoral fellows, an increase of over 40% since 2001.

The Centre for Global Public Health was established. A Section for First Nations, Métis, and Inuit Health and the Centre for Aboriginal Health Education were developed. Last year, the J.A. Hilde Northern Medical Unit celebrated its 40th anniversary. The Manitoba Centre for Health Policy feted its 20th anniversary in 2010 and its 100th deliverable in 2011!

The Diploma and Masters programs in Public Health were developed. We have welcomed new faculty members, new courses and new collaborations in the department, across the nation and around the world. Many of our faculty members and students have been recognized for their achievements in research and teaching. Another reason to celebrate!

Staff, students and faculty members are involved in volunteerism and service to the community through sitting on boards of voluntary agencies and running programs. They contributed in many ways to the advancement of new information through research, committee work and contributions to University, provincial and national organizations.

We appreciate the support provided through our relationships with First Nations communities and organizations. Funding through grants and contracts come from Manitoba Health, First Nations Inuit Health, Health Canada, the Gates Foundation, The World Bank and others.

This report is intended to provide information on what has transpired over the last decade, but also will give you a glimpse into our aspirations for the coming year. My appreciation is extended to everyone in the department for their contributions and collegiality.

Sharon M. Macdonald, MD, FRCPC
Head, Department of Community Health Sciences

2. Mission

To create, preserve and communicate knowledge with respect to the health of populations and thereby contribute to the physical, psychological, cultural, social and economic well-being of the people of Manitoba, Canada and the world.

Goals

To fulfill its mission, the Department of Community Health Sciences strives:

- to provide the highest quality education, employing a population-based approach to health and health care.
- to play a leadership role in ensuring that all undergraduate teaching in the Faculty has a population health and critical appraisal perspective and preventive focus where appropriate.
- to enhance student success by fostering an environment conducive to intellectual growth.
- to conduct original scholarship and applied research in the area of population health of the highest quality as judged by international standards.
- to serve the community by making its expertise available and where appropriate by providing exemplary service models to individuals, communities, institutions and governments to the fullest extent

History

The Department of Community Health Sciences (CHS) was created in 1987 through the merging of the Department of Social and Preventive Medicine (SPM) and the Division of Community and Northern Medicine (CNM).

SPM had existed as a small department within the medical school since the 1950s but had no full-time faculty members until the mid-1960s. Its first full-time Head, the late Dr. David Fish, was appointed in 1973. He began the recruitment of research scholars and scientists supported by career awards and laid the groundwork for SPM as a research-intensive department. A parallel development during the 1970s was the establishment and growth of the Northern Medical Unit (NMU) under the leadership of the late Dr. Jack Hildes. The NMU provided medical services to Aboriginal communities in the Keewatin region of the NWT and northern Manitoba. It was due to Dr. Hildes' foresight and energy that the University of Manitoba became a leader in Aboriginal health care.

Dr. Hildes held the title of Associate Dean responsible for the Division of Community Medicine, which incorporated the NMU, the community medicine residency program and also undergraduate teaching in family and community medicine. It changed its name to the Division of Community and Northern Medicine (CNM) in 1984.

The creation of CHS in 1987 recognizes the confluence of interests and activities between the two units and aims to create a well-rounded department which excels in all three areas of teaching, research and service. Dr. Brian Postl became the first Head of the new department, a post he held until 1993. He was succeeded by Dr. Michael Moffatt, who served from 1993-1998, Dr. T. Kue Young from 1998 to 2002, Dr. John O'Neil from 2002 to 2007, Dr. Lawrence Elliott from 2007 to 2008 and Dr. Sharon Macdonald from 2008 to present.

3. In Memoriam

The faculty and staff of CHS are saddened by the news of the death of our former colleagues. These tributes were prepared by colleagues and friends and are reprinted here in part or in whole.

Christine Egan (1946-2001)

Clinician, researcher, teacher, humanitarian, friend.

Christine Egan was born and raised in Hull, England and graduated from the Hull School of Nursing in 1967. She immigrated to Canada and established a distinguished career in nursing amongst residents of Inuit hamlets throughout Nunavut and in First Nations communities in Manitoba. Her commitments to northern residents and her own lifelong learning were manifest in her studies of nutrition and environmental health among the Inuit, culminating in a PhD from the University of Manitoba.

Her life ended tragically when she became a victim of the September 11th 2001 attack on the World Trade Centre. Chris and her brother Michael perished there.

The Dr. Christine Egan Memorial Scholarship Fund was established by her estate, family, friends, and colleagues. It perpetuates her values of generosity and caring by supporting Nunavummiut pursuing a career in nursing.

Lisa Lugtig (1957-2003)

Lisa graduated from the University of Calgary with an MD in 1982 and then completed a residency in Family Medicine. She was recruited to the Northern Medical Unit and found her calling in serving Nunavut communities. Dr. Lugtig lived and worked in Rankin Inlet from 1984 until 1993. She then returned to Winnipeg and worked at community based clinics. Lisa had a particular interest in women's health and was an advocate for women throughout her career. After a long battle with cancer, Lisa died on April 24, 2003. Lisa's memory lives on in her family and friends and in her contribution to northern health care.

Betty Havens (1936-2005)

Dr. Betty Havens was one of the leading gerontologists in Canada and known internationally for her commitment to improving the lives of senior citizens. Her career in the study of population and individual aging began with the Government of Manitoba, where she held numerous positions, including that of Provincial Gerontologist and Assistant Deputy Minister in the Department of Health. It was in her position in government that in 1971 she initiated, designed and conducted the Aging in Manitoba (AIM) Study which was the longest, continuous, populated based study in Canada and provided a model for the Canadian Longitudinal Study on Aging (CLSA). Armed with evidence from the AIM data, her foresight and determination lead to many initiatives including the introduction of Home Care and Pharmacare programs in Manitoba as well as government co-payment for the cost of Personal Care Homes.

From 1978 to 1994 she also held positions of Instructor, Assistant and Associate Professor at the University of Manitoba in Rehabilitation Therapy and Community Health Sciences. Upon retirement from public service she embarked on a voluntary career as a Professor and a Senior Scholar in the Department of Community Health Sciences. Here she was an active member of the department through teaching, advising Masters and Doctoral students and continuing to conduct the AIM study. Throughout her career she published 256 papers, gave 159 presentations as a guest speaker, and acted as a consultant to many national and international organizations.

Dr. Haven's dedication, expertise and commitment to older adults were recognized through numerous awards and distinctions including a D. Litt. from the University of Waterloo in Allied Health and Gerontology in 1994, the Canadian Health Services Research Advancement Award in 2003 and in February 2005, the Order of Canada. She passed away in Winnipeg on March 1, 2005.

Michael Elkin (1936-2009)

Dr. Michael Elkin was recruited to the Northern Medical Unit from South Africa. He worked primarily in the First Nations communities along the east shore of Lake Winnipeg for many years. Michael was an astute clinician and a wonderful story teller. His weekly trips to the north were a joy to him. Michael finished his medical career in Winnipeg. Two of his sons have followed in his footsteps. He is remembered with great fondness. Michael passed away on November 11, 2009.

Otto Schaeffer (*Luttaakuluk, meaning dear little doctor*) (1919-2009)

Dr. Otto Schaeffer died at the age of 90 in Jasper, Alberta where he had moved to be close to his daughter and her family. Dr. Schaeffer was a close friend and colleague of Dr. Jack Hildes. He was instrumental in the development of the International Union for Circumpolar Health. Dr. Schaeffer was first and foremost a researcher, but his dedication to the Inuit was established during his first job in Canada in Pangnirtung on Baffin Island. Dr. Schaeffer was widely respected and honoured in many ways for his lifetime contribution in health care.

Barbara Payne (1941-2010)

Dr. Payne began her professional life as a nurse. When her two sons were in their teens, she attended university, attaining her BA from York University and Masters of Science and a PhD from the University of Toronto. Barb was recruited to the Department of Sociology at the University of Manitoba. She joined the Department of Community Health Sciences in 2005 as the Director of the Aging in Manitoba study (AIM) after Professor Betty Havens' death. With funding from CIHR and SSHRC, Dr. Payne continued the legacy of the AIM study and ensured that the data was properly archived. It can now be accessed by students and researchers through the Centre on Aging.

Dr. Payne touched and enriched the lives of many people. She was an exceptional colleague. Dr. John Bond Jr. (Senior Scholar and Research Affiliate with the Centre on Aging) puts it this way: "Barb's broad understanding of the gerontological literature and a genuine interest in people has resulted in a unique ability to match the intellectual and personal needs of her students, friends and colleagues. She has skillfully guided her students as they explored various topics related to aging. I expect I am among many who appreciate the time working and being with her." Dr. Malcolm Smith (Associate Professor, Asper School of Business and Research Affiliate, Centre on Aging) notes: "Barb has been a wonderful colleague. She was always willing to give of her time and offer sage advice."

Barb is survived by her children Andrew Platt (Tina Scherz) and Josh Platt (Stephanie Gilbert), grandchildren Alexa, Bronwyn, Ethan and Anika, sister Marilyn Ivany, nieces and a wide reaching circle of friends.

Janet Sprout (1953-2010)

The lady in the floppy red hat, breastfeeding her newborn during epidemiology class - that was Janet Sprout, and it brought together her two main goals: to raise her children well and to leave the world a better place.

Janet, the middle of Eleanor and Norman Sprout's three children, started her activist career in her teenage years as the elected youth representative on the Kelowna Social Planning Council. Moving to Vancouver in 1972 to attend the University of British Columbia, she worked at a telephone answering service, where the sweatshop-like conditions prompted her to initiate a union drive. It took about two years, and she was fired, but she won the battle for a union contract.

After graduating, Janet worked as a human rights investigator. She then moved on to her life's work in health and safety, helping injured workers with their compensation claims and appeals. In Winnipeg, Janet's use of the American Medical Association guidelines to evaluate permanent impairment resulted in policy changes, a victory that radically altered practice.

After earning her master's degree in community health sciences, Janet became a director at the Workers' Compensation Board in 1999, where she was proudest of her success at enhancing diversity. She volunteered as a counsellor for rape and crisis centres, advocated for immigrant domestic workers and represented the public on various boards. She also enjoyed coaching new immigrants in English and acting with the Nelly McClung feminist theatre. Even at the end, Janet requested that her mourners help women in developing countries by supporting Kiva through microloans.

Janet met Harold Dyck soon after arriving in Winnipeg, and they were together for 10 years. They had two children, Jennifer and Nelson. Janet was a wonderful mother. Her love for her children and pride in them was always evident.

In 1996, Janet met David Patton and, five years later, David and his three sons, Mark, Andrew and Tom, joined Janet and her two children to create a household with five teenagers. Fortunately, Janet was a people person.

Janet's smile lit up her whole face. When you went for lunch or coffee (really an excuse for dessert) with her, you left with a smile on your face, too.

Although Janet's diagnosis of cancer in 2008 was a death sentence, she held her head up high and lived her last few months with great dignity. Her friends and family all marvelled at her capacity to show compassion for others in spite of her situation.

Her life was too short, but Janet achieved her goals with zest and style.

(By David Patton, Janet's husband, and Gail Marchessault, Janet's friend)

Evelyn Shapiro (1926-2010)

Evelyn Shapiro, a recognized scholar in gerontology and professor at the University of Manitoba for more than 20 years and the individual most widely regarded as the mother of home care in Canada, died November 10, 2010. She was 84.

Manitobans and Canadians owe Evelyn a note of gratitude for her prudence and determination in implementing home care. It is because of her that, as Canadians age, they have the ability to be cared for at home with the support of provincial health programs.

In 1947, Evelyn graduated from McGill University with her master's degree. She made an impact with her early work in Winnipeg as executive director of the Age and Opportunity Centre, giving her practical experience that bridged the gap between frontline healthcare services and academia. Her insights were observed by

government who requested her input in launching a new program that would go on to affect every Canadian. At the Department of Health and Social Development with the Manitoba Government she planned, built and lead the nation's first comprehensive home care program. This was her concept, her dream. Day by day and hour by hour, with skill, humour and persistence, Evelyn gracefully overcame bureaucratic hurdles to nurture this new idea into reality. Within a few years, this program became the model for home care across Canada.

Evelyn also had a long and distinguished career at the University of Manitoba. She joined the Department of Community Health Sciences in 1972 and was a great influence at the Manitoba Centre for Health Policy, challenging her colleagues to apply their research in ways that would directly affect the people and programs they were studying. She was known for asking important questions surrounding effectiveness and efficiency, and designed and undertook research to answer those questions.

Her vision for home care, political sense and practical ability to engage with researchers, combined with her innate ability to figure out how to do effective and publicly relevant research resulted in many awards, including the Order of Canada, the Order of Manitoba, and the Commemorative Medal for the 125th Anniversary of the Confederation of Canada. Evelyn was awarded an honorary doctorate at the University of Manitoba, and the Canadian Medical Association (CMA) Medal of Honour, the highest award given to a non-physician.

Her generosity emphasized her belief that research can help improve the lives of others, a belief which lives on in an endowed scholarship she established on February 10, 2004. The Evelyn Shapiro Health Services Research Award provides support to graduate students whose thesis research uses the Population Health Research Data Repository housed at MCHP. The first award was presented in 2007 and has been given annually since then.

Evelyn is survived by her two children, Zave and Daniel (Susan Shore) and granddaughter Sarah.

Jose Kusugak (1950-2011)

Jose Kusugak passed away on January 18, 2011. Jose was born in and died in Nunavut. He was a long-time colleague of Dr. Jack Hildes and friend of the Northern Medical Unit since 1975. Jose and his family lived in Rankin Inlet. He was an Inuit leader who was instrumental in the establishment of Nunavut. His contribution to his people and his country cannot be underestimated. He loved the Inuit and he loved his family. Eloquent tributes to his work have been published following his death. He is survived by his wife Nellie and his family and friends.

Tina Wasicuna (*Blue Star Woman*) (1970-2011)

Tina graduated from the Faculty of Medicine, University of Manitoba in 2003. She completed her Family Medicine residency in 2005. Tina worked with the J.A. Northern Medical Unit from 2005-2010 in Hodgson and Bloodvein. She passed away on August 27, 2011. Left to mourn her passing are her beloved husband Jeff Courchene, son Jacob, mother Judy Wasicuna, brother James Pratt, sisters Kristi Baker (Ed), Danette Wasicuna and many friends and relatives.

Jenni Morris (1947-2011)

Jenni Morris, financial administrator with the J.A. Hildes Northern Medical Unit passed away on September 1, 2011 after a courageous battle with cancer. Jenni joined the NMU in 1984. She is missed and remembered for her sense of humour, attention to detail, and her contribution to the successful management of the NMU. Jenni is survived by her immediate family; husband David; son Andrew and daughter Dana (Jamie) and her shining light, granddaughter Amelia.

4. Departmental Academic

4.1 Full-Time Faculty/Unit Heads

Professors

James F. Blanchard, BSc (Med), MD (Manitoba), MPH, PhD (Johns Hopkins); **Evelyn L. Forget**, BA (Hons.) (Glendon College), MA, PhD (Toronto); **Shiva Halli**, BSc, MSc (India), PhD (Western Ontario); **Thomas H. Hassard**, BSc, MSc, PhD (Belfast); **Joseph M. Kaufert**, BA (Minnesota), MA, PhD (Northwestern); **Patricia A. Kaufert**, BA (Hons.) (Leeds), PhD (Birmingham); **Patricia Martens**, BSc (Chemistry), Cert.Ed. (Secondary), MSc (Community Health Sciences, MB), IBCLC, IBLCE, PhD (Community Health Sciences, MB); **Verena Menec**, BA, MA, PhD (Manitoba); **Michael E.K. Moffatt**, BSc, MD (Toronto), MSc (McGill), FRCPC; **Leslie L. Roos**, AB (Stanford), PhD (MIT); **Noralou P. Roos**, AB (Stanford), PhD (MIT);

Associate Professors

Judy Bartlett, MSc, MD, CCFP, FCFP (Manitoba); **Sharon Bruce**, BN, MA, PhD (Manitoba); **S. Michelle Driedger**, BA (Hon.) (Winnipeg), M.A. (Carleton), Ph.D. (McMaster); **Lawrence J. Elliott**, MD, MSc (Manitoba), CCFP (Dalhousie), FRCPC; **Alan Katz**, BSc, MB, ChB (Capetown), MSc, CCFP (Manitoba); **Sharon M. Macdonald**, BSc (Med), MD (Manitoba), FRCPC; **Pierre Plourde**, MD (Ottawa), FRCPC; **Robert B. Tate**, BSc (Winnipeg), MSc, PhD (Manitoba);

Assistant Professors

Tracie Afifi, BSc, MSc, PhD (Manitoba); **Marcia Anderson DeCoteau**, BSc (Winnipeg), MD (Manitoba), MPH (Johns Hopkins), FRCPC; **Lisa Avery**, BSc (McGill), MD (Manitoba), MIH (University of Copenhagen), FRCSC; **Robert M. Chase**, BSc (Toronto), CCFP, FRCPC, MSc (McMaster); **Malcolm Doupe**, BPEd, MSc, PhD (Manitoba); **Brenda Elias**, MA, PhD (Manitoba); **Randy Fransoo**, BSc, MSc, PhD (Manitoba); **Depeng Jiang**, MSc, PhD (Southeast University); **Joel D. Kettner**, MD (Manitoba), FRCSC, MSc (London), FRCPC; **Robert Lorway**, BA (Hons.) (St. Mary's), MA (Dalhousie), PhD (Toronto); **Salaheddin Mahmud**, MD (Libya), MSc (London-UK), PhD (Manitoba), CCFP, FRCPC; **Mahmoud Torabi**, BSc, MSc (National University of Iran), PhD (Carleton);

Instructor

Gladys Stewart, Dip DH, BA, MSc (Manitoba)

4.2 Part-Time Faculty

Professors

David Butler-Jones, MD (Toronto), CCFP, MHSc (Toronto), FRCPC, FACPM; **Harvey Max Chochinov**, BA (Winnipeg), MD, FRCPC, PhD (Manitoba); **Juliette Cooper**, DipP, OT (Toronto), BOT, MSc, PhD (Manitoba); **Brian Cox**, BA (Hons.) (Winnipeg), MA, PhD (York); **Murray Enns**, BSc (Med), MD (Manitoba), FRCPC; **Keith Fowke**, PhD, BSc (Hons.) (Manitoba); **Gary Glavin**, PhD (Manitoba); **Ellen R. Judd**, BA, MA (Queen's), PhD (UBC), FRSC; **Robert Kerr**, BSc, MSc, PhD; **Stephen Moses**, MD (Toronto), MPH (Johns Hopkins); **John D. O'Neil**, BA, MA (Saskatchewan), PhD (Berkeley); **Pamela Orr**, MSc (Manitoba), MD (Toronto), FRCPC; **Francis Plummer**, MD, FRCPC; **Brian Postl**, MD; **Allan Ronald**, BSc, MD, FACP, FRCPC; **Jitender Sareen**, BSc (Winnipeg), BSc(Med), MD (Manitoba), FRCPC; **Alexander Segall**, BA, MA (Manitoba), PhD (Toronto); **Milton Tenenbein**, MD (Manitoba), FRCPC; **John Wade**, BS (North Dakota), BSc, MD (Manitoba), FRCPC;

Associate Professors

Marni Brownell, BA (Hons.) Winnipeg, MA (Toronto), PhD (Manitoba); **Sandor Demeter**, BSc, MD (Sask.), MHSc, FRCPC (Comm. Med.) (Toronto); **Allan Garland**, BS, MA, MD; **Maureen Heaman**, BN, MN, PhD (Manitoba); **Cynthia (Cindy) Jardine**, BSc (Manitoba), MSc, PhD (Alberta); **Erich Kliewer**, BSc, MSc (Manitoba), PhD (British Columbia); **Anita Kozyrskyj**, BScPharm (Hons.) (Toronto), MSc, PhD (Manitoba); **Allen Kraut**, MD (Manitoba), FRCPC; **Lisa Lix**, BSHEc (Saskatchewan), MSc, PhD (Manitoba); **Gustaaf Sevenhuysen**, BSc, PhD (London); **Shayne Taback**, BSc, MD, FRCPC (Manitoba); **Donna Turner**, BSc (Victoria), MSc (Calgary), PhD (Alberta); **John Walker**, B.A. (Hons.), M.A., Ph.D. (Manitoba); **Reynold Washington**, Dipl DNB, MD, MBBS (India); **Debrah Wirtzfeld**, BA (Hons.), BSc (Distinction), MD (Calgary), MSc (Memorial), FRCSC, FACS;

Assistant Professors

Carole Beaudoin, BA, MSc, PhD (Manitoba); **Marissa Becker**, MD, FRCPC, MPH; **Eric Bohm**, BSc, ME, MD (McMaster), MSc (Dalhousie), FRCSC; **Ingrid Botting**, BA (Winnipeg), PhD (Memorial University); **Shelley Buchan**, MD, CCFP (Sask.), FRCPC; **Patricia Ann Caetano**, BSc (Winnipeg), PhD (Manitoba); **Les Carrothers**, BA (Brandon), MPA, PhD (Manitoba); **Mariette Chartier**, RN, PhD (Manitoba); **Judith Chipperfield**, BA (Hons.), MA, PhD (Manitoba); **Ian Clara**, BScH (Queen's), MA (Manitoba), PhD (Manitoba); **Benita Cohen**, BA (Carleton), BN (Ottawa), MSc (Manitoba), PhD (Manitoba); **Catherine Cook**, MSc, MD (Manitoba), CCFP; **Piotr Czaykowski**, BSc, MD (UBC), MSc (Toronto); **Alain Demers**, BSc, MSc, PhD (Laval); **Anne Durcan**, MD (Manitoba), CCFP (Dalhousie); **Faran Emmanuel**, MBBS (Punjab), MSc (Aga Khan University); **Rachel Eni**, BA (Winnipeg), MSc, PhD (Manitoba); **Carla Ens**, BEd BHEc (Manitoba), MSc, PhD (Manitoba); **Margaret Fast**, BSc, MD (Manitoba), FRCPC, DTCH (Liverpool); **Chris Green**, BA (Winnipeg), MHSc (Toronto), PhD (Manitoba); **Jane Griffith**, BPE, Ed. Cert., MA, PhD (Manitoba); **Sande Harlos**, BSc (Alberta), MD (British Columbia), FRCPC; **Tim Hilderman**, BSc (Med), MD (Manitoba), FRCPC; **Yoav Keynan**, MD, PhD; **Sara Kreindler**, BA (Hons.) (Manitoba), DPhil (Oxford); **Linda Larcombe**, MA (Manitoba), PhD (Manitoba); **Josee Lavoie**, BSc, MA (McGill), PhD (London); **M. Nawal Lutfiyya**, BA (Manitoba), MA (Iowa), PhD (UMASS-Amherst); **Alexander Macaulay**, B.Sc. (New Brunswick), MD, CCFP (Dalhousie), MSc (Manitoba); **Gail Marchessault**, BHEc, MSc, PhD (Manitoba); **Ruth Ann Marrie**, BSc, MD, MSc, PhD; **Bruce Martin**, BSc (Toronto), MD (Queen's), CCFP, MSc (Manitoba); **Andrew McKay**, MD, MSc, (Manitoba), FRCSC; **Colleen Metge**, BSc (Alberta), PhD (Manitoba); **Javier Mignone**, M.A. (Alberta), Ph.D. (Manitoba); **Christine Peschken**, MSc (McGill), MD (Sask.), FRCPC; **Linda Poffenroth**, BSc (Alberta), MSc, MD (Manitoba), FRCPC; **William Pope**, MD, FRCPC, LLB (Manitoba); **Malathi Raghavan**, DVM, MS, PhD; **B.M. Ramesh**, BA, MA, PhD (India); **Clare Ramsey**, BSc, MD (Manitoba), MSc (Harvard); **Colette Raymond**, BScPharm (Alberta), ACPR (Ottawa), Pharm D (British Columbia), MSc (Manitoba); **Ted Redekop**, BSc, MD (Manitoba), CCFP, FRCPC; **Sushena Reza-Paul**, MBBS (India), MPH, DPH (Alabama); **Nichole Riese**, BSc, MSc, MD (Manitoba), CCFP (McMaster); **Jan Roberts**, BM, BS (Sydney), MSc, PhD (Manitoba); **Rob Robson**, BA (Manitoba), MD (McGill), FRCPC; **Michael Routledge**, BSc (Med), MD (Manitoba), CCFP, MSc (Manitoba), FRCPC; **Robert Santos**, BA, MA, PhD (Manitoba); **Julianne Sanguins**, B.Sc. (Toronto), M.Sc. (Portland), Ph.D. (Calgary); **Shahin Shooshtari**, B.Sc. (Iran), M.S.P.H. (Iran), Ph.D. (Manitoba); **Harminder Singh**, MBBS (New Delhi), MD (New Delhi), MPH (Manitoba), FRCPC (Manitoba); **Joyce Slater**, BSHEc (Saskatchewan), MSc (Manitoba), PhD (Manitoba); **Doug Tataryn**, BA (Hons.) (Manitoba), MA, PhD (Arizona); **Elise Weiss**, MSc, MD, CCFP; **Brock Wright**, BSc, MD, FRCPC, MBA (Manitoba); **John Wylie**, BSc (Manitoba), MSc (Ottawa), PhD (Manitoba); **Bo Nancy Yu**, MD (Harbin), MSc (Beijing), PhD (Manitoba); **Ryan Zarychanski**, BSc, BSc (Med.), MD, MSc (Ottawa), FRCPC;

Research Affiliates

Kawango Agot, BEd, MPH, PhD; **Elizabeth Ngugi**, RN (Kenya), BSc, MA, PhD (Columbia Pacific);

Instructor

Kelly Cranswick, MA

5. About the Department

5.1 CHS Support Staff

Paulette Collins, Financial Administrator; **Kathleen Bell**, Administrative Assistant to the Department Head; **Don Erickson**, Information Technologist; **Theresa Kennedy**, Administrative Assistant for the Graduate and Residency Program; **Princess Fernandez**, Administrative Assistant (Finance); **Iryna Tsybukh**, Office Assistant/Undergraduate Program Assistant, **Brenden Dufault**, BioStats Consultant.

Darryl Owens, Administrator retired from the university at the end of March 2010. Darryl had a long record of service to the university spanning three decades including administration in the Department of Psychology and the Department of Community Health Sciences. Darryl and Jeanie have embarked on the next path through the road of life in sunny Victoria, BC. We extend our best wishes to them.

Mary Cheang retired from the University of Manitoba on July 24, 2009. Mary started her biostatistical career at the University of Manitoba in October 1974 and made many friends and acquaintances over the past years. We extend our best wishes to Mary and her husband who are residing in British Columbia.

Sophie Buternowsky and Lynne Wichenko provided assistance for a number of years. Both have moved on to new opportunities in the Faculty of Medicine.

5.2 Financial Overview 2001-2011

The sources of funds available to the department have been quite consistent over the past 10 years. There has been variation in the budgeted amount related to grants and contracts. The newest area of growth is in the Centre for Global Public Health. Research grants, contracts and baseline UM funding for academic staff are the primary sources of income.

Figure 1 demonstrates the success of the Department of Community Health Sciences' (CHS) faculty in attracting funds for fiscal year 2010/2011. The CHS academic and research staff secured total revenue of \$36.6M, with the Province of Manitoba providing the largest percentage.

In 2009, the Centre for Global Public Health (CGPH) was established with Medical Microbiology and CHS, with a mandate to improve public health systems, programs and activities in diverse global settings. A cornerstone of CGPH is the design and implementation of international health projects in several countries including India, China, Kenya and Pakistan, primarily in the areas of HIV and STI prevention. This Centre currently accounts for about 10% of total funds in CHS (Figure 2).

In 2010, the Section of First Nations, Métis and Inuit Health was established within CHS. Funding was transferred to CHS from the Office of the Dean, Faculty of Medicine to support the Section.

Over the past few years, the department has invested in updating and renovating space to house the establishment of the CGPH, provided new redesigned space for CHS graduate students, updated the Betty Havens Seminar Room with state-of-the-art equipment, developed research space to accommodate 10 additional research personnel and updated office space for new departmental members.

CHS continues to be a leader in community engagement with the investment of funds in partnerships with the inner city communities. The Biomedical Youth Program under the direction of Dr Francis Amara, a new department member, has secured new university and community funding. CHS will also establish a dedicated position of Project Manager – Community Engagement to work between the community, CHS and the Faculty of Medicine to develop and implement a comprehensive approach for community engagement.

Figure 1.

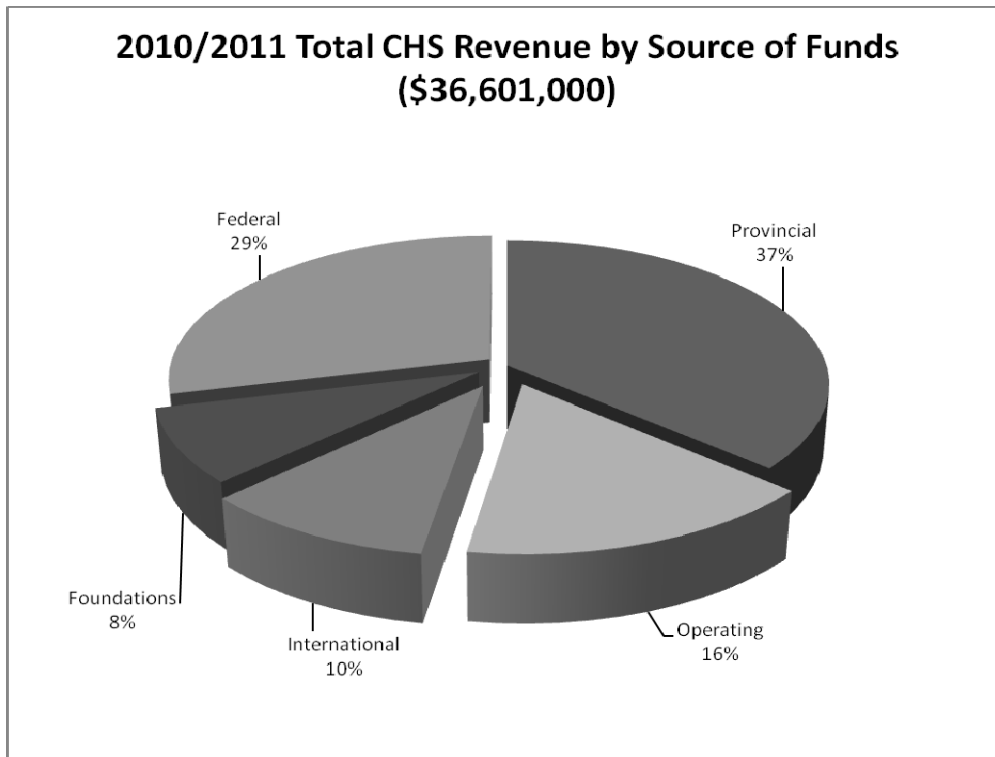
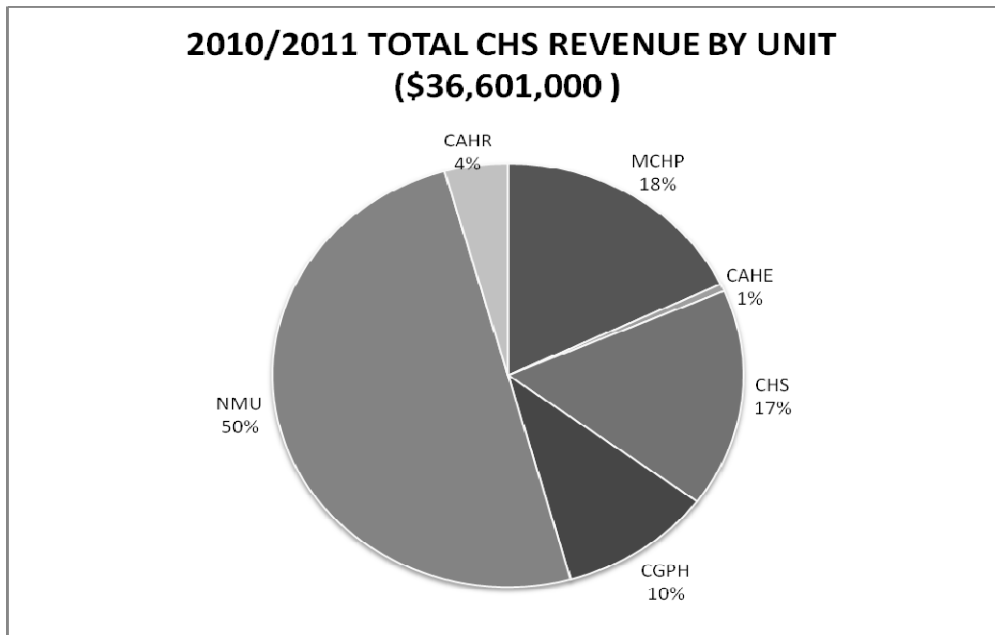
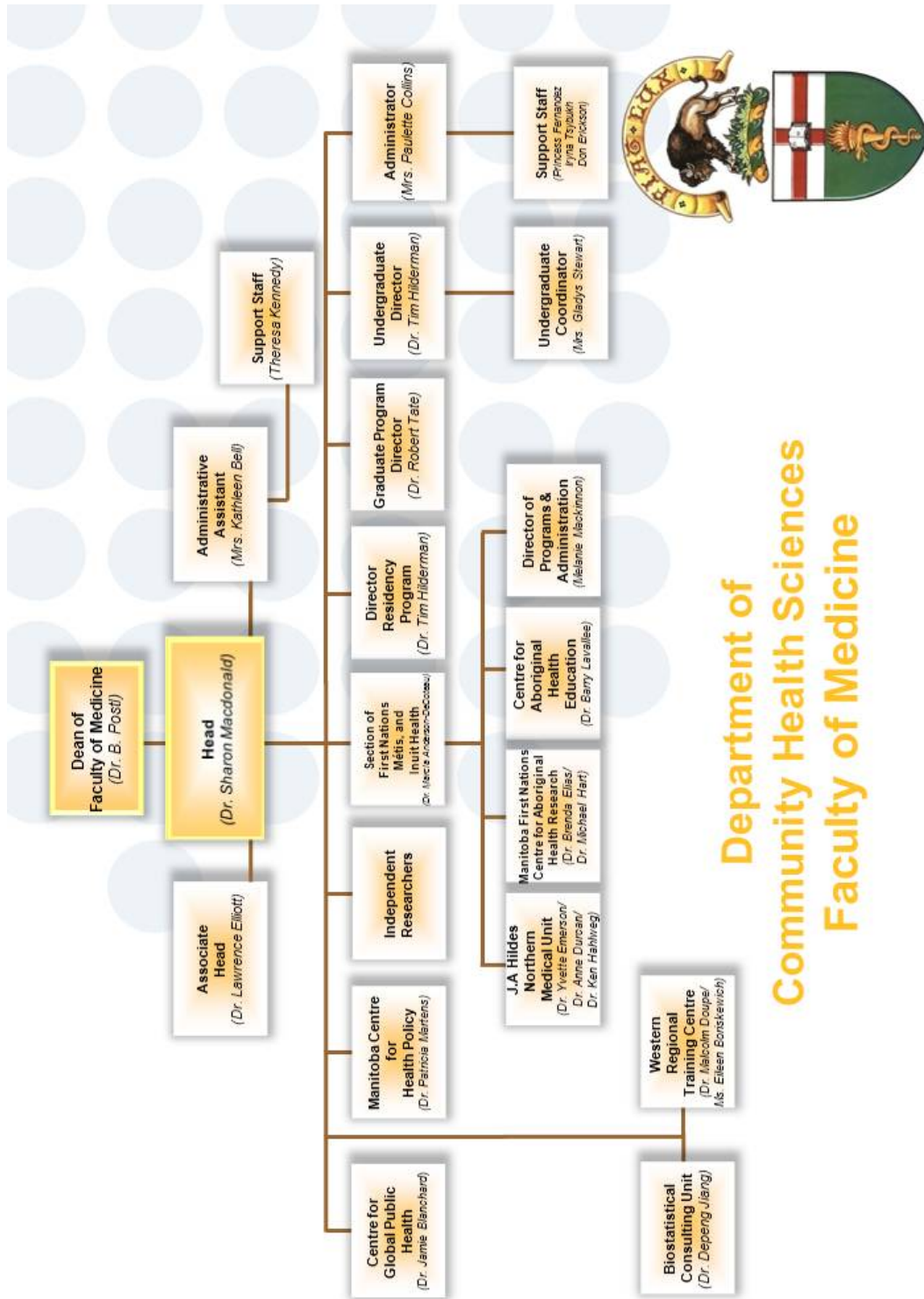


Figure 2.



5.3 CHS Organizational Chart



**Department of
Community Health Sciences
Faculty of Medicine**



UNIVERSITY OF MANITOBA



ONE UNIVERSITY. MANY FUTURES.

6. Educational Programs

The Department provides teaching and mentorship in Community Health Sciences to undergraduate medical students, graduate students (Diploma, Masters and Doctoral), residents in Public Health and Preventive Medicine, and post-doctoral fellows.

6.1 Undergraduate Medical Education Program (UGME)

The Department participates in all four years of the medical curriculum. The program depends on faculty and community facilitators to support the lectures, tutorials, student projects, and the offsite experiential learning with community agencies and the regional public health units.

In the first year, students learn the core concepts of community health sciences (Population Health & Medicine course, Block 1) including the subject areas of epidemiology, research and statistical methods, determinants of health, disease prevention, health protection and population health promotion, occupational and environmental health, health policy, translational research, evidence-based medicine and critical appraisal. In the Human Development course (Block 2), lectures and tutorials emphasize the social determinants of health and applications of principles of community development at various stages in the life cycle. In the systems blocks, sessions address community health objectives related to specific body systems and diseases.

In the pre-clerkship years, faculty members and residents also contribute to Problem-solving, Medical Humanities, and Clinical Skills courses. First Nations, Métis and Inuit Health core competencies in cultural safety and the historical context of health services are an important component of undergraduate teaching and are emphasized throughout the curriculum.

The Alan Klass Memorial Program for Health Equity within UGME addresses access to health care for all. The department has also taken a lead role in teaching the principles of translational research, including sessions in all years of the program. The undergraduate program will be participating in an Inter-professional Education (IPE) session focused on health promotion with 11 other faculties in the 2012 calendar year with approximately 700 students participating from across the university.

The clerkship years provide the student with opportunities to apply the principles of community health sciences to the practice of public health in the community and to the preparation of a health policy paper and presentation. These opportunities occur in the Family Medicine/Public Health and Multiple Specialty rotations, respectively. An elective rotation in public health and preventive medicine is offered.

The Department is participating actively in the curriculum renewal process. An important focus is the enrichment of the UGME curriculum with teaching in indigenous health. There is also emphasis on the integration of the principles and practice of public and population health and preventive medicine throughout the new curriculum. These important areas are consistent with national directions in UGME.

The Department of Community Health Sciences and Manitoba Health, Government of Manitoba, established an award in 2007 to recognize excellence in medical students' scholarly activity in the field of population and public health sciences. Prizes have been awarded to students in the Community Health Sciences Clerkship who produce the best scholarly paper on public health and health policy. The list of winners in the past 4 years and the title of the paper follow.

Award for Scholarly Activity in Population and Public Health Sciences

Class of 2008

Sarah Freedman - *Is the Grass Really Greener on the Other Side? Pesticide Bylaws and Children's Health*

Michael Isaac - *Gatekeeper Training as a Preventative Measure for Aboriginal Youth Suicide*

David Lee - *Review of the Benefits and Issues of an Expanded Role of Nurse Practitioners in Canada.*

Class of 2009

Christopher White - *Waiting List Management in Canada*

Ilan Schwartz - *Out of Africa: Male circumcision as a public health intervention against HIV/AIDS in Sub-Saharan Africa*

Lucy Hwi - *Calcium Supplementation: A review of benefits and risks in post-menopausal women*

Class of 2010

Sean Udow - *Multiple Sclerosis and Vitamin D: Illuminating Shady Grounds*

Kristen Creek - *Type 2 Diabetes Epidemic in Aboriginal Children in Manitoba: Factors influencing early-onset and preventative strategies*

Deanna Cook - *Poisoning Related Injuries in Children*

Class of 2011

Aaron Guinn - *Patient Flow through the Emergency Department*

Keith Wilson - *Aviation and Medicine: Can pilots teach doctors about patient safety?*

Jarret Woodmass - *Predicting poor outcomes in patients undergoing total hip and knee replacements*

Jessica Spence - *Student-observed surgical safety practices across an urban regional health authority: Current practice and future considerations*

6.2 Graduate Program

The CHS Graduate Program offers a broad, multidisciplinary training at the Diploma, Master's and Doctoral levels in the concepts and methods of the population-based health sciences and their application in the practice of population health, public health and preventive medicine. In addition to training in the core areas of epidemiology, biostatistics and the social sciences as applied to health (anthropology, economics, sociology and political science), students have an opportunity to obtain advanced training in research programs conducted by specialized units within the department such as the Manitoba Centre for Health Policy, Centre for Global Public Health, the J.A. Hildes Northern Medical Unit and the Manitoba First Nations Centre for Aboriginal Health Research. Graduate students have the opportunity to access both internationally regarded researchers and award winning teachers.

The Doctor of Philosophy (Ph.D.) program is designed to produce individuals who will teach in the community health sciences, train other researchers, design and execute major research projects, and serve as senior advisors and consultants in the area of health care policy and planning.

The two master's programs, the Master of Science (M.Sc.) and Master of Public Health (M.P.H.) degrees, are intended to satisfy the demand of local, regional, provincial and federal health departments for trained community health professionals. Both Master's level programs provide core training in epidemiology, public health, health policy planning, and health administration. The M.Sc. program has a research focus requiring completion of a thesis while the M.P.H. program has a field-placement / practicum integrating applied public health concepts.

The Diploma in Population Health (Dip.P.H.) is course based and aims to provide clinicians and managers in provincial and regional health authorities core knowledge and skills in population health sciences, including epidemiology and biostatistics. This training will produce and better-informed consumers of health research data.

Community Health Sciences Graduates June 1999 - Present				
Student	Program	Thesis Title	Defense Date	Advisor(s):
Sazzadul Khan	PhD	Does Respiratory Syncytial Virus (RSV) infection in the first two years of life contribute to the development of asthma among children in Manitoba?	March 23, 2011	Dr. A. Kozyrskyj
Crystal Bernier	MSc	The Effect of Neighborhood and Family Influences on Body Image and Dietary Restraint in Pre-Adolescent Children	March 21, 2011	Dr. A. Kozyrskyj
Bohdanna Kinasevych	MSc	The Determinants of Sexually Transmitted and Blood Borne Infections Among Incarcerated Youth	February 8, 2011	Dr. C. Beaudoin
Katherine Fradette	MPH	Secondary Analysis of the Manitoba Youth Health Survey Data: A Community-Based Participatory Approach	September 10, 2010	Dr. J. Griffith
Robert Schroth	PhD	Influence of Maternal Prenatal Vitamin D Status on Infant Oral Health	September 8, 2010	Dr. M. Moffatt
Gayle Restall	PhD	Development of a Model for the Implementation and Evaluation of Citizen-User Involvement in Mental Health Policymaking: A Case Study	August 10, 2010	Dr. J. Kaufert
Rhonda Campbell	MSc	Resiliency Factors and Substance Use Among Manitoba First Nation Girls Living on Reserve	August 9, 2010	Dr. B. Elias
Hazel Rona	MSc	Understanding the Quality of Life of Personal Care Home Residents with Alzheimer's Disease and Related Dementias: Family Caregivers' Perspectives	July 23, 2010	Dr. M. Doupe
Gitanjali Sood	MPH	Developing an Interactive Sexual Health Education and Service Delivery Tool for Youth	July 8, 2010	Dr. C. Beaudoin
Joykrishna Sarkar	MSc	Measurement Invariance of Health-Related Quality of Life: A Simulation Study and Numeric Example	June 25, 2010	Dr. L. Lix
Rachelle Briere	MPH	Access to pre-travel health services and adherence to pre-travel health advice in immigrant populations travelling to visit friends and relatives in tropical countries	June 17, 2010	Drs. R. Tate, S. Macdonald, T. Hilderman, L. Elliott Field Placement Supervisor: Dr. P. Plourde
Hannah Neufeld	PhD	Misconceived Expectations: Aboriginal Women's Experiences with Gestational Diabetes Mellitus in the Urban Context of Winnipeg, Manitoba	June 4, 2010	Dr. G. Marchessault
Devender Singh	PhD	Migration, Social Capital and HIV/AIDS: A Study of Rajasthani Migrants in Mumbai and Ahmedabad	May 14, 2010	Dr. J. O'Neil
Diane Schuster	MSc	Prevalence and Risk Factors of Sexually Transmitted and Blood Borne Infections Among Winnipeg Street-Involved Youth Engaged in Survival Sex	May 7, 2010	Dr. C. Beaudoin
Richard Rusk	MPH	Lab Based Geospatial Surveillance of the 2009 Pandemic H1N1 Influenza Outbreak	March 26, 2010	Drs. R. Tate, S. Macdonald, T. Hilderman Field Placement Supervisor: Dr. C. Beaudoin
Allison Dart	MSc	The Natural History of Youth Onset Type 2 Diabetes Mellitus	March 22, 2010	Dr. P. Martens
Eveline Buehlmann	MSc	A Program Assessment: Barriers and Facilitators to the Implementation of the Teen Talk Peer Support Training Program and the Impact of the Peer Support Training on Participants in Rural and Northern Manitoba	March 18, 2010	Dr. L. Elliott
Wanda Phillip-Beck	MSc	Development of a Framework of Improved Childbirth Care for First Nation Women in Manitoba: A First Nation Family Centred Approach	March 12, 2010	Dr. J. Mignone
Chelsea Ruth	MSc	The Influence of Socioeconomic Status on Morbidity in Late Preterm Infants	March 5, 2010	Dr. M. Brownell
Julia Uhanova	PhD	Application of the Health Care System to First Nations and Non-First Nations Patients with Chronic Hepatitis C	August 26, 2009	Dr. J. Blanchard
Anitha Padi	MPH	Knowledge Translation to Increase Access and Awareness for Perinatal Oral Health Promotion	August 21, 2009	Drs. Tate, Macdonald, Hilderman Field Placement Supervisor: Dr. M. Moffatt

Community Health Sciences Graduates cont'd

Student	Program	Thesis Title	Defense Date	Advisor(s):
Natalija Saurek-Aleksandrovskaja	MSc	Association Between Insulin Resistance, Metabolic Syndrome, Asthma and the Other Asthma Phenotypes	August 13, 2009	Dr. A. Kozyrskyj
Amanda Woods	MSc	The Health of First Nations Children Upon Entrance to a Residential School in a Northern Manitoba Community	July 31, 2009	Dr. S. Bruce
John David Williams	MPH	Manitoba Tuberculosis Control Program: First Nations Perspective	July 30, 2009	Drs. Tate, Macdonald, Hilderman Field Placement Supervisor: Dr. C. Beaudoin
Erin Schillberg	MSc	Risk Factors Associated with Sporadic Campylobacter, Salmonella and Verotoxin-producing Escherichia coli in Different Regions within Manitoba	July 29, 2009	Dr. J. Wylie
Lisa LaBine	MSc	A Qualitative Study of Informed Consent: Moving the Discussion Beyond the Consent Form	July 16, 2009	Dr. J. Kaufert
Carla Ens	PhD	Palliative and Hospice Care in South Africa: The Confluence of Context and Education	May 15, 2009	Dr. H. Chochinov
Souradet Shaw	MSc	Latent Variable Investigation of Emergency Room Use	April 8, 2009	Dr. L. Lix
Salah Mahmud	PhD	Use of Non-Steroidal Anti-Inflammatory Drugs and Prostate Cancer Risk: A population-based nested case-control study"	March 9, 2009	Dr. D. Turner
Tracie Afifi	PhD	Problem Gambling Among Women in Canada	September 15, 2008	Dr. J. Sareen for Dr. B. Cox
Lori Mitchell	PhD	The Relationships Between Client and Contextual Characteristics and High Users of Home Care Services	August 25, 2008	Dr. C. Black
Milena Pirnat	MSc	Lifestyle Choices in People with Type 2 Diabetes	August 18, 2008	Dr. G. Sevenhuysen
Ruth Barclay-Goddard	PhD	Health Related Quality of Life over One Year Post Stroke: Identifying Response Shift Susceptible Constructs	August 15, 2008	Dr. N. Mayo
Shay-Lee Belik	MSc	A Comparison of the Prevalence and Risk Factors of Suicidal Ideation and Suicide Attempts in American Indian and General Population Samples	August 11, 2008	Dr. J. Sareen
Laura Thompson	MSc	Use of Respondent-Driven Sampling to Access Winnipeg Street-Involved Youth for the Purpose of Urine-Based Chlamydia and Gonorrhea Testing and Treatment in Non-Clinical Venues	July 25, 2008	Dr. J. Wylie
Stephanie Harvard	MSc	Assessment of the Prevalence of Bloodborne Pathogens and Associated Risk Factors Among Men Who Have Sex with Men and Women Who Have Sex with Women in Winnipeg, Manitoba	June 25, 2008	Dr. J. Wylie
Caitlin Mills	MSc	Sometimes You Just Feel Like You Have Had Enough: A Community-Based Study on Men's Experiences with Stress	May 7, 2008	Dr. S. Bruce
Kym Blackwood	MPH	Perspectives on TB Control in Manitoba: Epidemiology, Transmission and Isolation Issues	March 25, 2008	Drs. Tate, Macdonald and Elliott
Punam Mehta Hayward	MSc	An Epidemiological Analysis of Acute Infectious Diarrhea, Water, Sanitation and Housing Infrastructure in a Northern Manitoba First Nations Reserve Community	December 21, 2007	Dr. P. Orr
Lisa Richards	MSc	Exhaled Nitric Oxide: A Useful Biomarker of Acute Respiratory Health Effects Resulting from Exposure to Ambient Air Pollution? A Pilot Study in Conyers, Georgia	November 28, 2007	Dr. L. Elliott
Dhiwya Attawar	MSc	Diabetes-Related Foot Complications and Amputations in a Manitoba First Nation Community: A Systems Approach to Prevention	November 9, 2007	Dr. S. Bruce
Denise Viardo Koh	MPH	The Migration, Settlement, and Licensure of Filipino Physicians to Canada	October 26, 2007	Drs. Tate, Macdonald and Elliott
William Libich	MPH	Access to Health Services for Refugees in the Winnipeg Health Region	August 30, 2007	Drs. Tate, Macdonald and Elliott
Cara Brown	MSc	Identifying and Predicting Home Care Use: Are There Differences Across Functional Status Measures?	August 30, 2007	Dr. M. Finlayson

Community Health Sciences Graduates cont'd

Student	Program	Thesis Title	Defense Date	Advisor(s):
Harminder Singh	MPH	Serious Complications Associated with Lower Gastrointestinal Endoscopy in Winnipeg: Implications for Colorectal Cancer Screening	August 23, 2007	Drs. Tate, Macdonald and Elliott
Anna Johnston	MPH	Tuberculosis Control in Manitoba	August 22, 2007	Drs. Tate, Macdonald and Elliott
Kristin Anderson	MSc	Review and Analysis of the Effect of Public Policy on Nutrition Policy Instruments in Canada: 1867-2006	August 21, 2007	Dr. L. Carrothers
Elsabe du Plessis	MSc	Quality of Life and Stigma in HIV-Seropositive Adolescents Attending Mulago Hospital, Kampala, Uganda	August 14, 2007	Dr. A. Ronald
Randall Fransoo	PhD	How Health Status at Birth and Through Childhood Affects Progress and Performance in School: A Population-Based Study	August 2, 2007	Dr. N. Roos
Sandra Hwang	MSc	Redefining Self and Community: Understanding Empowerment Experiences of Female Sex Workers within the Context of HIV/AIDS Prevention Programs in Karnataka, India	August 2, 2007	Dr. S. Moses
Kathleen Deering	MSc	Understanding HIV Transmission Dynamics in Rural India and its Relationship to Sex Work and Migration in Rural India: a Mathematical Modeling Approach	July 5, 2007	Dr. S. Moses
Satyendra Satyanara	MSc	Prevalence and Correlates of Chronic Major Depression in the Canadian Community Health Survey, Cycle 1.2	June 25, 2007	Dr. M. Enns
Genevieve Thompson	PhD	Family Perceptions and Satisfaction with End-of-Life Care in Long-Term Care Facilities	June 18, 2007	Dr. V. Menec
Karen Robinson	MPH	Work-Related Musculoskeletal Disorders in the Hog Processing Industry: A Study of Manitoba Plants and their Safety Programs	May 23, 2007	Drs. Tate, Macdonald and Elliott
Delaine Barth	MSc	The Effect of Legislation Concerning ETS on the Short-term Health of Hospitality Workers: A Canada-Italy Comparison	March 16, 2007	Dr. M. Taylor
Norma Van Walleggem	MSc	Building Connections: The Maestro Project. Evaluation of a Community Resource for Young Adults with Type 1 Diabetes	February 21, 2007	Dr. M. Moffatt
Kevin Thiele	MSc	Canadian Family Medicine Residents' Clinical Training in Diabetes Mellitus	January 25, 2007	Dr. V. Menec
Jennifer Magoon	MSc	Developing and Evaluating Rural Environmental Health Indicators: A Focus on Agricultural Pesticides and Health Outcomes in MB	November 9, 2006	Dr. P. Martens
Lena Shah	MSc	Personal Risk Networks and the Molecular Epidemiology of Hepatitis C Amongst Injection Drug Users in Winnipeg	August 25, 2006	Dr. J. Wylie
Aynslie Hinds	MSc	Individual and Community Determinants of Residential Mobility Among Individuals with Mental Illness in Manitoba	August 25, 2006	Dr. L. Lix
Shannon Pidlubny	MSc	A Gender-Based Analysis of the Relationship Between Income Adequacy and Unmet Perceived Need for Mental Health Services in Canada	August 21, 2006	Dr. E. Forget
Pascal Lambert	MSc	Physical Activity and the Oldest-Old: A Comparison of Self-Report and Accelerometer Readings	August 15, 2006	Dr. V. Menec
Colette Raymond	MSc	Statin Utilization in the Province of British Columbia	August 10, 2006	Dr. A. Kozyrskyj
Dennis Bayomi	MSc	Relationship Between Longitudinal Weight Patterns of Men During Middle Age and Successful Aging in Later Life: The Manitoba Follow-Up Study	August 9, 2006	Dr. R. Tate
Assaad Al-Azem	PhD	Social Network Analysis in Tuberculosis Control Among the Aboriginal Population of Manitoba	April 10, 2006	Dr. L. Elliott
Nita Mazurat	MSc	Risk of Malnutrition Among Orally Compromised Community Living Older Adults	March 23, 2006	Dr. S. Gelskey
Mariette Chartier	PhD	The Relationship Between Childhood Abuse and Adult Physical Health and Health Care Utilization	March 3, 2006	Dr. J. Walker
Myrna Dyck	MSc	The Risk Factors for West Nile Virus Infection and West Nile Virus Disease	February 20, 2006	Dr. L. Elliott
James Zacharias	MSc	Prevalence and Determinants of Albuminuria on a Manitoba First Nation Community	December 12, 2005	Dr. T.K. Young

Community Health Sciences Graduates cont'd

Student	Program	Thesis Title	Defense Date	Advisor(s):
Patricia Sulaiman	MSc	An Examination of Individual and Social Network Factors That Influence Needle Sharing Behaviour Among Winnipeg Injection Drug Users	December 8, 2005	Dr. J. Wylie
Tricia Kutnikoff	MSc	The Risk of Colorectal Cancer Following Gastric Surgery: A Population-Based, Historical Cohort Study	August 25, 2005	Dr. D. Turner
Romy McMaster	MSc	Characterizing Repeat Users of Emergency Departments in Winnipeg	August 25, 2005	Dr. A. Kozyrskyj
William Craig	MSc	The Demographics and Job Satisfaction of Physicians Working in Canadian Pediatric Emergency Departments	August 24, 2005	Dr. M. Moffatt
Parisa Airia	MSc	Are Breast Cancer Incidence Statistics Internationally Comparable? The effect of cancer registration practices on the data	August 17, 2005	Dr. D. Turner
Eilish Cleary	MSc	Depression in Manitoba: Patterns of Health Care Use – A Comparison of Administrative and Survey Data	July 12, 2005	Dr. P. Martens
Carol Ringer	PhD	Gender and Regional Variations in the Quality of Care and the Health Outcomes in Acute Myocardial Infarction Patients in Manitoba	June 10, 2005	Dr. V. Menec
Lisa Dwyer	MSc	Wartime Operational Stress and Ischemic Heart Disease: The Manitoba Follow-Up Study, 1948-2005	June 10, 2005	Dr. R. Tate
Kara McDonald	MSc	Is There An Association Between Childhood Immunizations and Childhood Asthma?	June 6, 2005	Dr. A. Kozyrskyj
Meta Kreiner	MSc	Stakeholder Perceptions of Midwifery Integration into the Health Care System in Manitoba	May 18, 2005	Dr. P. Kaufert
Rachel Eni	PhD	An Articulation of the Standpoint of Peer Support Workers to Inform Childbearing Program Supports in Manitoba First Nations Communities	March 16, 2005	Dr. J. O'Neil
Renee Robinson	PhD	Rural Mental Health Services for People with Severe and Persistent Mental Illness: Organization and Effectiveness	March 11, 2005	Dr. L. Roos
Lynne Warda	PhD	Is The Hospital a Safe Place for Children? Development and Validation of a Safety Audit for Pediatric Health Care Facilities	December 21, 2004	Dr. M. Moffatt
Carol Hitchon	MSc	The effects of ethnicity, socioeconomic status and autoantibodies on clinical outcome in patients with Systemic Lupus Erythematosus	December 13, 2004	Dr. C. Peschken
Malcolm Doupe	PhD	Predicting the Utilization of Home Care and Personal Care Homes by Community Dwelling older Manitobans	October 15, 2004	Dr. J. Kaufert
Margaret Friesen	PhD	Worker Participation and Return-to-Work: A Study Among Healthcare Workers in the Winnipeg Regional Health Authority	September 14, 2004	Dr. J. Cooper
Barbara Siemens	MSc	Profile of Community Therapy Services Inc. Clients Receiving Occupational Therapy and Physiotherapy through the Winnipeg Regional Health Authority Home Care Program	July 30, 2004	Dr. A. Kozyrskyj
Eng Soon Chan	MSc	Access of International Medical Graduates to Practice in Ontario: A Study of Narrative Descriptions	July 23, 2004	Dr. J. Kaufert
Carlos Quinonez	MSc	A Political Economy of Dentistry in Nunavut	June 24, 2004	Dr. J. O'Neil
Sarah Bowen	PhD	Assessing the Responsiveness of Health Care Organizations to Culturally Diverse Groups	May 6, 2004	Dr. J. Kaufert
Laurel Jebamani	MSc	The Business of Stopping AIDS: A Case Study of a Non-Governmental Organization in South India	March 1, 2004	Dr. J. Blanchard
Michael Routledge	MSc	Carcinogenicity of Metalworking Fluids in a Cohort of Workers Employed at a Transformer Manufacturing Plant	December 12, 2003	Dr. R. Tate
Leanne Leclair	MSc	Evaluating School Health Capacity Building in Cuba: A Case Study of Conducting Research in a Developing Country	December 12, 2003	Dr. A. Yassi/ Dr. R. Tate
Brenda Elias	PhD	The Influence of the Social Environment on the Health of Manitoba First Nations Communities	December 12, 2003	Dr. P. Kaufert
Benita Cohen	PhD	Building Capacity for Health Promotion in Manitoba's Regional Health Authorities	December 11, 2003	Dr. J. O'Neil
Andrea Klymasz	MSc	Families and Schizophrenia: The Challenges of Coping	December 8, 2003	Dr. J. O'Neil

Community Health Sciences Graduates cont'd

Student	Program	Thesis Title	Defense Date	Advisor(s):
Jennifer Conlin	MSc	Development of a Profile of a Suicide Attempter in the Sioux Lookout District	November 7, 2003	Dr. T.K. Young
Judith Bartlett	MSc	Developing Indicators and Measures of Well-Being for Aboriginal Populations in Manitoba	October 31, 2003	Dr. J. O'Neil
Shirley Hiebert	PhD	NCN Otinawasuwuk (Receivers of Children): Taking Control of Birth in Nisichawayasihk Cree Nation	August 29, 2003	Dr. J. O'Neil
Catherine Cook	MSc	Jurisdiction and First Nations Health and Health Care	August 25, 2003	Dr. J. Kaufert
Bruce Martin	MSc	Palliative Care and the Kivalliq Region of Nunavut: Determinants of Programme Development and Implementation	August 21, 2003	Dr. J. Kaufert
Robert Schroth	MSc	Maternal Vitamin D: a systematic review of associations and deficiencies, an investigation of early childhood caries in northern Manitoba, and a proposed study of prenatal vitamin D status and enamel hypoplasia in infants	August 15, 2003	Dr. M. Moffatt
Teresa Mayer	MSc	Gender differences in distress: an exploration of structural and psychosocial conditions of family and work	August 1, 2003	Dr. C. Mustard
Elise Weiss	MSc	Predictive Validity for Neonatal Readmission of Canadian Guidelines for Discharge at less than 48 Hours of Age	March 21, 2003	Dr. C. Mustard
Javier Mignone	PhD	Social Capital in First Nations Communities: Conceptual Development and Instrument Validation	March 14, 2003	Dr. C. Mustard
Ana Hanlon-Dearman	MSc	Sleep Characteristics of Young Alcohol Affected Children: A Quantitative and Qualitative Analysis	March 6, 2003	Dr. J. Evans
Carla Pindera	MSc	Through the Eye of a Needle: Women Injection Drug Users in Winnipeg	March 4, 2003	Dr. J. Kaufert
Bridget Stirling	PhD	Cost-Effectiveness Analysis of Three HIV Prevention Interventions in Kenya: A Mathematical Modelling Approach	February 28, 2003	Dr. F. Plummer
Hannah Neufeld	MSc	Prenatal Dietary Reflections Among Two Generations in a Southern First Nations Community	January 20, 2003	Dr. T.K. Young
Shahin Shooshtari	PhD	Predictors of Positive and Negative Self-Rated Health: Transitions and Sub-Population Variations	December 11, 2002	Dr. B. Havens
Rob James	PhD	The Neighbourhood Location of Source Plasma Clinics in the United States: 1980-1995	December 4, 2002	Dr. C. Mustard
Anthony Morham	MSc	Colorectal Carcinoma Clinical Factors	November 20, 2002	Dr. J. Blanchard
Carol Scurfield	MSc	Midwifery Legislation in Manitoba	August 19, 2002	Dr. P. Kaufert
Ian Fish	MSc	Case-Mix Grouping for the Adult Trauma Group: For Better or For Worse	August 9, 2002	Dr. C. Mustard
Donna Collins	MSc	A Longitudinal Perspective of Residential Relocation Among Manitoba Seniors	August 8, 2002	Dr. B. Havens
Alec Macaulay	MSc	Mortality in the Kivalliq Region of Nunavut, 1987-1996	June 27, 2002	Dr. S. Macdonald
Carolyn DeCoster	PhD	Measurement of and Factors Relating to Variation in Cataract Surgery Waiting Times in Manitoba	June 13, 2002	Dr. N. Roos
Jamie Wiebe	PhD	Gambling Behaviour and Factors Associated with Problem Gambling Among Older Adults	April 12, 2002	Dr. R. Norton
Natalia Dik	MSc	Physician Diagnosed Allergic Rhinitis in Manitoba: 1985-1988	March 8, 2002	Dr. J. Manfreda
Caroline Jaworsky	MSc	The Illness Experience of Individuals with Chronic Obstructive Pulmonary Disease and Their Perceived Care Needs	October 9, 2001	Dr. J. Kaufert
Sandra Lee	MSc	Does Elimination of Placebo Responders in Double-Blind Placebo-Controlled Randomized Clinical Trials of SSRI Antidepressants in Depression Influence the Size of the Treatment Effect? A Meta-Analytic Evaluation	August 17, 2001	Dr. J. Walker
Francis Muu	MSc	Breastfeeding and Its Determinants in Nairobi, Kenya: Implications for Infant Feeding Guidelines for HIV-1 Infected Mothers	July 16, 2001	Dr. T.K. Young
Gail Marchessault	PhD	Far from Ideal: Talking About Weight with Mothers and Daughters from Winnipeg, Southern Manitoba and a First Nations Community	July 3, 2001	Dr. L. Garro
Julia Uhanova	MSc	The Impact of Socioeconomic Status on Clinical Features and Outcomes of Acute Myocardial Infarctions	March 9, 2001	Dr. L. Roos

Community Health Sciences Graduates cont'd

Student	Program	Thesis Title	Defense Date	Advisor(s):
Nichole Riese	MSc	Aboriginal Patients at the Health Sciences Centre: Perceptions of Care	December 19, 2000	Dr. S. Macdonald
Charlotte Johnson	MSc	Dimensions of Accountability in the Health Care Sector in Canada	December 15, 2000	Dr. J. O'Neil
Min Zhang	MSc	Health-Related Knowledge and Behaviour Associated with Levels of Obesity Among Manitobans: Analysis of the 1990 Manitoba Heart Health Survey	December 14, 2000	Dr. T.K. Young
Elizabeth Sellers	MSc	The Emerging Epidemic of Type 2 Diabetes Mellitus in First Nation Children and Youth: Issues Related to Diagnosis, Etiology, Complications and Treatment	December 13, 2000	Dr. T.K. Young
Cornelia Van Ineveld	MSc	Reliability and Validity of the Predicting Health Needs of Seniors Survey	April 28, 2000	Dr. B. Havens
Eric Sigurdson	MSc	The Culture of Child Protection Work	March 28, 2000	Dr. J. Kaufert
Anita Kozyrskij	PhD	Socioeconomic Status and Inhaled Corticosteroid Use in Childhood Asthma: Impact on Hospitalization	March 13, 2000	Dr. C. Mustard
Gerald Spiegel	PhD	A Comparison of Economic Valuation Methods for Environmental Health Risk Reductions: Assessing Residential Radon Mitigation in Manitoba	February 28, 2000	Dr. J. Horne
Linda Olson	MSc	A Comparative Study on the Incidence of Tuberculosis Among Status Indians and Other Selected Groups in Manitoba, Canada	December 16, 1999	Dr. P. Orr
Robert Tate	PhD	The Modifying Effect of Aging and Tracking on Risk Factors for Ischemic Heart Disease in the Manitoba Follow-up Study	November 25, 1999	Dr. J. Manfreda
Jamal Harb	MSc	A Health Risk Assessment on the Consumption of Trace Metals Found in Crops Grown on Biosolids-Amended Soil	October 29, 1999	Dr. A. Yassi
Pamela Smith	PhD	Vitamin D Deficiency in Three Northern Manitoba Communities	October 8, 1999	Dr. M. Moffatt
Mariette Chartier	MSc	Social Phobia: A Descriptive Epidemiologic Study of Socio-Demographic Characteristics, Co-Morbidity, Age of Onset and Risk Factors	August 27, 1999	Dr. R. Murray
Chris Egan	PhD	Inuit Women's Perceptions of Pollution	August 24, 1999	Dr. J. O'Neil
Judith Glennie	MSc	Is Hypertension a Determinant of Erythropoietin Requirements in Hemodialysis?	July 29, 1999	Dr. B. Wright
Jo-Ann Sawatzky	PhD	The Relationship between Physical Activity and the Determinants of Cardiovascular Health in Healthy Mid-life Women	June 11, 1999	Dr. T. K. Young

6.3 Residency in Public Health and Preventive Medicine

The Public Health and Preventive Medicine Residency Program is a specialty training program fully accredited by the Royal College of Physicians and Surgeons of Canada leading to the fellowship (FRCPC) qualification. Established in 1979, the program is comprised of five fully funded positions and is five years in duration. Training consists of basic clinical training, academic training towards either a Masters in Public Health (MPH) or a Masters in Science (MSc) in Community Health Sciences, and core and elective rotations in federal, provincial and regional health and related agencies. Residents may also qualify for certification in Family Medicine by the College of Family Physicians of Canada (CCFP) concurrently.

The Residency Program Directors have played an active role in shaping the future of public health resident education at the Royal College of Physicians and Surgeons of Canada with Dr. Sharon Macdonald serving as the Chief Examiner in Community Medicine and with Dr. Lawrence Elliott's appointment to the College's examination committee. Drs. Elliott and Hilderman continue to serve on the Royal College's Specialty Committee for Public Health and Preventive Medicine.

The program offers residents a unique combination of flexible training opportunities and personal attention from faculty members and facilitates interactions among residents. Since 2001, nine residents completed

the program: Drs. Richard Rusk, Denise Koh, Salah Mahmud, Karen Robinson, Lisa Richards, Bunmi Fatoye, William Libich, Michael Routledge, and Tim Hilderman. All of these graduates are currently engaged in research and/or public health practice in Manitoba at the regional and/or the provincial levels.

As of July 1, 2011 there are 6 residents in the program:

Dr. Sandra Allison
Dr. Brent Roussin
Dr. Jocelyn Reimer
Dr. Adrienne Morrow
Dr. Michael Isaac
Dr. Heejune Chang

7. Department Awards

7.1 Jack Hildes Memorial Fund

This Fund was established in 1984 by family, friends, and colleagues of Dr. John Arthur (Jack) Hildes to be awarded to a graduating medical student. Additional donations were received in 2000 on the occasion of the 30th anniversary of the J.A. Hildes Northern Medical Unit.

Jack Hildes (1918-1984) received his medical degree at the University of Toronto, followed by postgraduate studies in Internal Medicine, Gastroenterology and Physiology in England (MRCP 1948), and Canada (FRCP 1949). His work on cold physiology led to many trips to the North (Canada and elsewhere) during which he developed a deep understanding of both the medical needs of circumpolar indigenous peoples and the challenges facing health care workers in remote regions. In 1970 he founded the Northern Medical Unit.

Dr. Hildes was appointed as a Member of the Order of Canada in 1979. In 1983 he received the Dr. and Mrs. Ralph Campbell Outreach Award for meritorious service in outreach activities. In September 1983, Dr. Hildes was presented with the Commissioner's Award for his outstanding contributions to the improvement of health conditions among people of the North. The nomination for this award was by the Keewatin Regional Council, an all aboriginal assembly. His tireless and selfless patient care in difficult circumstances during the polio epidemic of the early 1950's was legendary. He received the 1953 City of Winnipeg, Man of the Year Award.

Recipients

Term	Student Name	Amount
1997/1998	McDonald, Shannon Marie	\$ 2,000
1997/1998	Block, Stephanie Karen	2,000
1998/1999	Sarin, Christopher	2,500
1999/2000	Rajani, Priya	2,500
2000/2001	Avery, Lisa Shannon	2,500
2001/2002	Anderson, Marcia Jo-Anne	2,000
2002/2003	Mackie, Christopher Alexander	2,000
2005/2006	Froese, Nicole Lynn	2,000
2006/2007	Schwandt, Michael	1,000
2006/2007	Wuerz, Terence C.	1,000
2007/2008	Husarewycz, Marie N.	2,000
2008/2009	Narvey, Stefanie J.	2,000
2009/2010	Pardhan, Kaif	2,000
2010/2011	Thompson, Kristjan J.	2,000

7.2 David G. Fish Memorial Scholarship

In memory of Dr. David G. Fish, his family, friends, and colleagues have established an endowment fund at the University of Manitoba. The Manitoba Scholarship and Bursary Initiative has made a contribution to this fund. Dr. David G. Fish (1929-2000) was the founding Department Head of the Department of Social/Preventative Medicine at the University of Manitoba. He devoted his career to graduate education and international health. This fund commemorates Dr. Fish, his vision, and his accomplishments and also reflects his interest in research on international health by offering scholarship support for graduate students who undertake research abroad.

Recipients

Term	Student name	Amount
2003/2004	Du Plessis, Elsabe	\$ 5000
2004/2005	Hwang, Dong Hee	5000
2005/2006	Singh, Devender	5000
2006/2007	Ens, Carla D.	5000
2007/2008	Singh, Devender	5000
2008/2009	Singh, Devender	10,000
2009/2010	Singh, Devender	10,000
2010/2011	Shaw, Souradet Y.	10,000

7.3 Dr. Christine Egan Memorial Scholarship

In memory of Dr. Christine Egan (Ph.D. /99), who died tragically on September 11, 2001, her family, friends, and estate have established an endowment fund at the University of Manitoba. The purpose of the fund is to perpetuate her values of generosity and caring for others; her commitment to health and education in Nunavut and to expand opportunities for the Inuit of Nunavut to study nursing by providing scholarship support to promising Nunavut nursing students.

Recipients

Term	Student name
2004	Rebecca Lonsdale, Andrea McLarty, Martha Nowdlak, Sipporah Peterloosie
2005	Pallulaaq Ford, Gloria Mimialik, Susie Pearce
2006	Trista Mercer, Sharon Owliijoooy
2007	Mongo Ireland, Deborah Montpetit, Parniga Thibaudeau
2008	Amanda Hatch, Parniga Thibaudeau, Harriet White
2009	Amanda Hatch, Parniga Thibaudeau, Harriet White
2010	Nancy Gordon, Sarah MacRury, Suzy Schwartz

7.4 Evelyn Shapiro Award for Health Services Research

Professor Evelyn Shapiro has had a long and illustrious career in health services research, particularly in the realm of health policy as it relates to care and provision of services for older adults. She developed Manitoba's home care program and worked nationally to implement similar programs across Canada. As a lead researcher with the Manitoba Centre for Health Policy, she earned world-acclaim for her innovative and policy-relevant research. Her many accolades include the Commemorative Medal for the 125th Anniversary of the Confederation of Canada, an honorary doctorate degree from the University of Manitoba, and the Canadian Medical Association Medal of Honour (their highest award bestowed on a non-physician). In 2007, Professor Shapiro was named a Member of the Order of Canada.

On the occasion of her retirement, the "Evelyn Shapiro Award for Health Services Research" was established to support the work of graduate students whose thesis will use the Population Health Research Data Repository. Professor Shapiro continued as a Senior Scholar in CHS until her death in 2010.

Recipients

Term	Student name
2007	Randy Fransoo
2008	Souradet Shaw
2009	Tom Mutter, Lauren Yallop, Songul Bozat, Elaine Burland, Brett Hiebert
2010	Janelle de Rocquigny, Brenda Comasky, Rachel Carr, Yang Cui

8. Departmental Units

There are one section and six units and centres within the Department of Community Health Sciences.

8.1 Section of First Nations, Métis, and Inuit Health:

(Centre for Aboriginal Education, Manitoba First Nations Centre for Aboriginal Health Research, J.A. Hildes Northern Medical Unit)

The Section of First Nations, Métis and Inuit Health was established in 2010 under the leadership of Dr. Catherine Cook. The first year of activity was focused on developing the organizational and operational infrastructure that will allow the Section to emerge as a leader in Canada in the field of Aboriginal Health.

The Section brought together three units: the Centre for Aboriginal Health Education, the Manitoba First Nations Centre for Aboriginal Health Research and the J.A. Hildes Northern Medical Unit. Strategic planning for the Section identified the key areas over the next five years as leadership, community engagement and involvement in faculty wide strategic programs.

Dr. Marcia Anderson DeCoteau was recruited as the Section Head, effective September 2011, replacing Dr. Cook. Dr. Bruce Martin announced that he would step down from his role as Director, Northern Medical Unit effective July 15, 2011 after more than a decade in this leadership position. Ms. Melanie MacKinnon was recruited to the Section as the Director of Operations and Administration, bringing skills and knowledge in Aboriginal Health, health administration and community engagement.

Dr. Yvette Emerson joins the Section in her role as Associate Medical Director at the NMU. She joins Dr. Ken Halhweg who was recruited in 2010 and Dr. Anne Durcan, responsible for several years for activities in Nunavut and the Inuit Health Unit. In December 2010, the NMU celebrated 40 years of service with a day of learning and a dinner. The Northern Medical Unit activities will focus on recruitment and retention of physicians and physician supports, ongoing development of programs, community service, and community engagement for the next few years.

The Manitoba First Nations Centre for Aboriginal Health Research saw the appointment in 2010 of Dr. Michael Hart from the Faculty of Social Work as Co-Director, along with existing Co-Director, Dr. Brenda Elias. Dr. Hart brings his knowledge and wisdom in the field of Indigenous Mental Health and Indigenous Knowledge. He has focused on the development of research relationships with First Nations in Manitoba and his involvement in the Network Environments for Aboriginal Health Research (NEAHR) projects.

8.1a Centre for Aboriginal Health Education

The Centre for Aboriginal Health Education (CAHE) is a resource centre for First Nations, Métis and Inuit students who are enrolled in professional health programs at the University of Manitoba (Dentistry, Dental Hygiene, Medical Rehabilitation, Medicine, Nursing and Pharmacy). In addition to providing study space, computing facilities and study materials, CAHE offers a range of programming to support students both culturally and academically. CAHE's Cultural Program, under the direction of the Elder-in-Residence, Margaret Lavalée, includes group and individual teaching sessions, a documentary series, ceremonies, guest speakers and workshops that focus on issues and topics relevant to indigenous culture and history. The Kaaweechimoseyawat (Walking with One Another) program, launched in the spring of 2011, is a mentorship program that links students to Community, Health Professional and Peer Mentors. In addition to these programs, CAHE facilitates access to personal and academic supports at the university and fosters a culturally safe and multidisciplinary environment that enhances the learning experience of indigenous students. CAHE facilitates curriculum development in medicine and other schools/faculties in order to

advance the health and healing of Manitoba's Indigenous communities. The centre coordinates several hours of innovative adrogological processes throughout the medical school's four year degree program.

The Centre for Aboriginal Health Education was established in 2006 with Dr. Catherine Cook as its first director and it formally joined the Department of Community Health Sciences in 2010. Under the direction of the current director, Dr. Barry Lavallee, efforts have focused on enhancing the Indigenous Health curriculum within the Faculty, and supporting students in achieving their goals. Currently, 41 Aboriginal students from the six faculties / schools are registered at the Centre. A grant for the development of a Mentorship Program resulted in the establishment of a Mentorship Committee and the development of new tools (Mentor and student guides). The mentorship program will link students with both health professional and community-based mentors to explore a range of topics that will assist students as they enter the field of Aboriginal health, from career development to traditional knowledge and practices. Events supporting the bringing together of mentors and mentees have been held and will grow stronger over the coming years.

Highlights

CAHE has over 40 members and in 2011 had 6 students complete their programs of study (3 MD program, 1 Family Medicine residency program, 2 Occupational Therapy program). In 2009 CAHE established a Traditional Medicine elective for medical students and residents that provides an opportunity to explore how traditional approaches to health and wellbeing may be integrated into clinical practice.

Key Activities for 2011/12

The Centre continues to develop and expand its cultural and mentorship programs. Planned activities include a medicine picking workshop, mentor training workshop series, monthly cultural teachings, student sweat lodge ceremonies, tutoring/learning supports and quarterly cultural events. The Centre is also undertaking research projects that examine cultural safety in health education and also identifying the barriers to pursuing health education for Manitoba's indigenous populations.

Current Faculty and Staff

Dr. Barry Lavallee - Acting Director
Margaret Lavallee - Aboriginal Cultural Specialist/Elder-in-Residence
Linda Diffey - Program Coordinator/Research Associate
Amanda Penzick - Office Assistant
Paula Broeders - Student Research Assistant

8.1b Manitoba First Nations Centre for Aboriginal Health Research

The Manitoba First Nations Centre for Aboriginal Health Research (MFN CAHR) is a joint initiative of the Assembly of Manitoba Chiefs, the Faculty of Medicine, and the Foundations for Health. The Centre is involved in a number of activities in indigenous health, including: Initiating, coordinating and supporting research activities designed to assist First Nations, Métis, Inuit and other Indigenous communities and organizations in their efforts to promote healing, wellness and improved health services; Integrating scientific and traditional indigenous approaches to producing new knowledge about health and health care; Building research capacity of students and community-based researchers in indigenous health through the Manitoba NEAHR program (formerly the ACADRE program) is an important aspect of its work.

The NEAHR (Network Environments for Aboriginal Health Research) is a CIHR capacity building grant that partners with First Nations through the Assembly of Manitoba Chiefs and with Métis through the Manitoba Métis Federation. The NEAHR provides support for Masters and PhD students in the field of Aboriginal Health Research, and provides grant funding for projects in Aboriginal Health Research. To date, the NEAHR

has supported 83 students, 1 New Investigator in Aboriginal Health Award and 4 community grants. In 2009, the NEAHR Program awarded its first New Investigator Award in Aboriginal Health Research to Dr. Mary Jane McCallum, Department of History, University of Winnipeg to support her research in the area of Indigenous health history; the tenure of this award continues to March 31, 2011.

In the summer of 2011 the NEAHR program will support 22 student research interns in a variety of projects that will be presented at the Annual Colloquium in Aboriginal Health on August 16, 2011. In addition, support will be provided for 8 students in the Masters program, 13 students pursuing their PhD, community based grants through the Assembly of Manitoba Chiefs and Manitoba Métis Federation, and urban and international projects in Indigenous health. Projects supported include a comparative examination of international Indigenous infant mortality data, the relationship between HIV infection and solvent use, and the use of administrative data to examine the health status of Indigenous peoples in Colombia. Planned for 2011/12 are an inaugural First Nations, Métis and Inuit Research Symposium in December 2011 to profile Aboriginal Health Research at the University of Manitoba, and a Peer Review Workshop to enhance the skill set of current students in the program.

Highlights

2001 - Creation of MFN CAHR in April;
2001-2008 - Clare Brant Memorial Lecture Series;
2007 - John O'Neil stepped down as Director in June;
2007 - Successful application for the access to the Indian Registry Data System by Dr. Elias;
2006 - New Investigator Award- Dr. Brenda Elias;
2010 - Dianne Rogers (Receptionist) retired after 21 years with the University.
2010 - Marcia Anderson DeCoteau and family welcomed baby girl Myla in December;
2011 - Dr. Catherine Cook – Awarded the AFMC May Cohen Gender Equity & Diversity Award;
2011 - Dr. Marcia Anderson DeCoteau – 2011 National Aboriginal Achievement Award Recipient

Key Activities for 2011/2012

"Indigenous Innovation Integration", June 24-27, 2011, Regina Saskatchewan.

The NEAHR program will be sponsoring students to attend the 11th annual National Gathering of Graduate Students in Aboriginal Health Research, "Indigenous Innovation Integration", June 24-27, 2011, Regina Saskatchewan. "Indigenous Innovation Integration" embodies the research and work of our Graduate students. At this gathering IPHRC will showcase the amazing Indigenous research of our present and future researchers.

Current Faculty and Staff

Dr. Brenda Elias, Dr. Michael Hart – Co-Directors
Dr. Marcia Anderson DeCoteau - Faculty
Dr. Judith Bartlett – Faculty
Dr. Catherine Cook - Faculty
Dr. Josée Lavoie – Affiliated Faculty
Dr. Joseph Kaufert – Affiliated Faculty
Madelyn Hall – Research Associate
Linda Diffey – Research Associate
Dr. Sharon Mah – Research Associate
Say Hong – Data Analyst

Dawn Stewart – Financial Administrator
Henry Dik – Info Technologist
Chantal Edwards - Receptionist/Financial Asst.
Bonnie Sheppard Lewis- Transcriptionist
Student Research Assistants – Paula Broeders, Lindsay Bristow

8.1c J.A. Hildes Northern Medical Unit

Since late 1969 the J.A. Hildes Northern Medical Unit (NMU) has been the principal provider of health care to many communities in northern Manitoba and eight Inuit Hamlets in Nunavut. The goal is to provide dependable high quality medical care, promote and facilitate research that responds to the needs and wishes of the communities served, develop and foster educational programs within the communities and at the Faculty of Medicine, and increase awareness of health concerns of indigenous people. Clinical services include family practice and medical specialties, expanded practice nursing, renal health, diabetes foot program, diabetes retinal screening program, medical social work, midwifery, human communication, and rehabilitation therapy. The support of the communities served, Manitoba Health, First Nations Inuit Health, and Health Canada is appreciated.

Highlights

2002 - Dr. Samuel Nisbett (Ophthalmology) leaves province after providing many years of service to Hodgson;

2003 – Dr. Lorna Grant (Obstetrics/Gynecology) retires. Dr. Grant travelled to Norway House and the Kivalliq region for several years;

2003, 1 April - Transition of U of M Clinic Support Staff and Medical Social Workers to the Norway House Cree Nation Health Authority;

2003, 11 April - Dr. Wanda Klippenstein Awarded the 2003 Dale Johnson Memorial Award for her Work in Rural Medicine. This award is presented annually by the Manitoba College of Family Physicians;

2003, 24 April - Dr. Lisa Lugtig passes away. Lisa lived and worked in Rankin Inlet from 1984 to 1993. After she returned to Winnipeg she continued to provide locum and on-call support;

2003, June - Renie Paupanekis, Norway House clinic employee celebrates 25 years with the NMU;

2003 - Orthotics Program expands to Garden Hill and Rankin Inlet;

2003, 25 April - Dr. David Grewar receives Distinguished Service Award from the MMA. Dr. Grewar has been a paediatric consultant to the NMU since its inception and has been traveling to the Keewatin/Nunavut since the early 1950's;

2003, August - Dr. Joan Swain and Sophie Rabliauskas, Regional Health Program Co-ordinator organize the first ever retreat in the remote community of Weaver Lake, north of Poplar River. 15 participants from Poplar River attended the weeklong event;

2003, 21 November - NMU responds to Flu Outbreak in Sanikiluaq; A team from the NMU arrived in Sanikiluaq with testing materials to see what illness the Island was facing after 70 people visited the nursing station with flu like symptoms and an infant came down with whooping cough;

2004 - Dr. Manfred Ziesmann (Plastics) retires from flying to Churchill and Rankin Inlet but continues to see patients in Winnipeg;

2004 - Dr. Ronald Watson (Otolaryngology) passed away Aug 2004. He travelled to Norway House for several years;

2004, 14 June - Ribbon Cutting at Regional Renal Health Unit in Garden Hill, Island Lake, a ceremony of the first non-hospital based dialysis unit in Canada. With the institution of a local dialysis unit patients who spent years in Winnipeg were repatriated home to receive treatment beginning in January 2005. By 2010 a couple of patients went on home haemodialysis with the support of the Unit;

2004, June - Trichinellosis in Rankin Inlet. Trichinellosis outbreak among extended family members. Some of the family members were medivaced;

2004, November - Diabetes Foot Nurse Clinician Outreach Program is renewed; in the winter of 2004 the Diabetes Foot Program was renewed. This community based program is designed to provide continuity of care for people with diabetes foot complications or those at imminent risk of developing complications by means of regular monthly diabetes foot clinics;

2005 - Dr. Mark Heywood (Colposcopy) leaves the province after many years of service to Norway House, Churchill & the Kivalliq. He was involved in the program inception;

2005 - Dr. Ken Van Ameyde (Internal Medicine) retires from travelling to Norway House, Churchill & Hodgson but continues to see patients in Winnipeg;

2005, 9 January - The first five patients of the Island Lake Dialysis Unit received dialysis on this date. A ceremonial opening took place with blessings given by Elder, Luke Harper, and Renal Health Nurse, Mirasol Salacup;

2005, 30 June - Diabetes Retinal Screening Programme begins. This programme offers people access to screening within their own communities;

2005, August - The midwifery programme was initiated by the NMU and the Churchill Regional Health Authority to complement existing longstanding midwife and nurse-based programs in the Arctic;

2005, December - Diane Wood, office assistant, retires after 10 years with the Northern Medical Unit;

2007 - Dr. William Rennie (Orthopedics) retires after several years of service to Churchill and the Kivalliq;

2008 - The Diabetes Retinal Screening Programme expands to 2 nurse clinicians to provide service to more communities;

2008 - Dr. Frank Duerksen, Orthopaedic Surgeon an expert in leprosy surgery in South America and Africa and a leader in diabetic foot treatment retires after 33 years. Dr. Duerksen did his first trip with the NMU in 1975;

2009, May - Registered dietitian begins visits to Garden Hill to provide nutritional counseling to the community members who receive dialysis as well as the community at large through a Community Kitchen Program, After School Kids Cooking Club, and through physical activity programs;

2009, May - H1N1 Virus in St. Theresa Point; 50 of the 2,000 residents of St. Theresa Point required evacuation to Winnipeg hospitals over the summer. Staff & physicians adjusted schedules and put for a maximum effort in responding to the needs of the community and all our northern communities. Nellie Erickson, RN, who has been associated with the NMU for over 25 years, emerged as a leader making a difference in the care of the St. Theresa Point community;

2009, 15 May - Dr. John Speakman is invested as a Member of the Order of Canada. A caring and dedicated professional, John Speakman (retired) has been at the forefront of providing eye care services in remote

northern communities. For more than four decades, he served as an ophthalmologist travelling to such areas as Sanikiluag, Rankin Inlet, and Arviat;

2009, 16 July - At the 14th International Congress on Circumpolar Health Dr. Bruce Martin was awarded the John Arthur Hildes Circumpolar Health Award medal by colleague, former NMU physician, and President (2009) of the International Union for Circumpolar Health, Dr. Pam Orr;

2009, 11 November – Dr. Michael Elkin passes away. He worked in Poplar River and Berens River for 13 years until 2000;

2010 - Dr. David McCullough (Otolaryngology) retires travelling after many years of service to Hodgson and Churchill;

2010 - Dr. Helmut Huebert (Orthopedics) retires traveling after many years of series to Churchill;

2010, 10 May - Funding to the Northern and Remote Family Medicine Residency Program announced. Partners in this project are: Manitoba Health, Manitoba Telehealth, Manitoba Regional Health Authorities, Assembly of Manitoba Chiefs, Government of Nunavut, and the NMU. Under the initiative residents complete a two year Northern/Remote Stream Family Medicine Residency Program working in northern and remote communities;

2010, 25 May - Dr. David Grewar is named to the Order of Manitoba. A specialist in paediatrics and Aboriginal and newborn medicine, for more than 50 years he made an exceptional contribution to northern health care, particularly among the Aboriginal and Inuit children of communities in northern Manitoba and Nunavut;

2010, 9 September - Construction of a new six station renal health dialysis unit at Percy E. Moore was kicked off with a sod turning ceremony. The unit will be attached to the Hospital and operated by the Interlake Regional Health Authority;

2010, 25 October - Dr. Anne Durcan is named one of the top 10 family physicians of the year. Since 1999 Anne has been instrumental in coordinating the Inuit Health Program of the J.A. Hildes Northern Medical Unit;

2010, 4 December - NMU celebrates 40 Years with a Continuing Medical Education day and Gala Dinner with over 180 registrants from NMU pioneers to current medical students and residents, physicians, nurses, allied health professionals, and support staff;

2011, 18 January - Inuit Leader, Jose Kusugak passes away in Rankin Inlet. The NMU mourns the loss of Jose Kusugak friend and colleague of Dr. Hildes and the NMU since 1975;

2011, 01 September – Jenni Morris, financial administrator and long-time NMU employee, passes away after a lengthy illness;

Research Projects

2001 - Manitoba First Nation Health Survey, Dr. J. O'Neil and Brenda Elias

2001 - Diabetes Projections in Manitoba Registered First Nations, Dr. C Cook and Dr. J. Blanchard

2001 - Clinical and Laboratory Features and the Role of a Titanium Dioxide Sunscreen in the Management of Actinic Prurigo in First Nations and Inuit Populations, Dr. M. Wiseman

2002 - 2003 - Screening for Diabetes and Risk Factors in St. Theresa Point, Dr. T. Kue Young and Dr. H. Dean

2002 - Epidemiologic Study of Osteoporosis in Aboriginal Manitobans, Dr. B. Leslie

2002 - 2003 - Health Care Utilization by Patients with Lower Extremity Complications of Diabetes Evaluated Through a Multi-Disciplinary Diabetic Foot Clinic, Dr. J. Embil

2002 - Rheumatoid Arthritis in First Nation Patients, Dr. K. Oen

2002 - Assessment of Rheumatic Mitral Valve Disease in First Nations Population, Dr. J. Tam

2002 - Manitoba First Nations Longitudinal Health Survey, Dr. J. O'Neil
2002 - 2003 - Health Governance Study, J. O'Neil, P. Kaufert, J. Kaufert, D. Brothwell, K. DeVries, K. Grant, D. Gregory, S. Frankel, P. Martens, B. Martin, and J. Bartlett
2002 - The Health and Health Care Use of Registered First Nations People Living in Manitoba: A Population-based Study, P. Martens
2002 - First Nation Bone Health Study, B. Leslie, C. Metge, H. Weiler, K. Young, K. Yuen, and A. Tenenhouse
2002 - Social Capital as a Determinant of Health in First Nations Communities, J. Mignone, C. Mustard, J. O'Neil, K. Tillie, and HIR Committee
2002 - Diabetes Reduction through Assessment with Ramipril and Rosiglitazone Medication trial, Dr. B. Martin and Dr. S. Ludwig
2002 - 2003 - Follow-up of Young Adults with Type 2 diabetes Diagnosed during Childhood, Dr. H. Dean
2002- 2003 - Prevention of Early-Onset Type 2 Diabetes: Establishment, Description, and Pilot Testing of a Cohort at High Genetic Risk, Dr. H. Dean
2002 ongoing - Educational Strategies to Improve Screening for Gestational Diabetes Mellitus in Aboriginal Women in a Remote Northern Community, Dr. L. Grant, Dr S. Ludwig, Dr E. Cleary, and Dr. N. Riese
2002 - 2003 - Surveillance for Viral Hepatitis in Canada, Dr. G. Minuk
2002 - 2003 - Understanding Protective Immunity against Hepatitis C, Dr. J. Rempel
2006 - The Garden Hill First Nations Diarrhoea Study, Punam Mehta

B.Sc.Med Projects

2001 - Lower Extremity Complications of Diabetes in a Northern Canada First Nations Community: Burden of Illness and Parameters of Care, Kirsten Reid, Student; J. Embil, Supervisor
2002 - Burden of Disability and Quality of Life Amongst First Nations Canadians with Diabetes and Lower Extremity Amputations, Bonnie Meatherall, Student; J. Embil, Supervisors
2004 - Prevalence of Type II Diabetes in a Canadian Inuit Population, Jeff Singer, Student; B. Martin and J. Embil, Supervisors
2006 - End Stage Renal Disease and Renal Replacement Therapy in First Nation Canadians: A Descriptive Review of a Select Manitoba Population, Jolene Fisher, Student; B. Martin, Supervisor

Current UM Faculty and Staff

Churchill

Michelle Brown, Office Assistant (Housekeeping) (casual)
Allison Long, Office Assistant (Housekeeping) (casual)

Hodgson

Jeanette Bouchard, Nurse practitioner
Debbie Hart-Swanson, Clinic nurse manager (RN)
Marie Roddy, RNEP
Ardelle Spence, NMCA (LPN) (no longer working there)
Darlene Thomas, Social Worker
Shelley Lynn Uruski, Office Assistant
Ann Vandersteen, Office Assistant

Island Lake Regional Renal Health Program

Daniel Aranha, RN
Helen Bentir, RN
Vernon Harper, Maintenance Tech 3
Tim Mentuck, Maintenance Tech 3
Alexander Miller, LPN Level 4
Deanna Miller, LPN Level 4

Vineeth Nair, RN Level 6

Kyle Nichols, Maintenance and Retinal Screener

Rachel Nichols, LPN Level 4

Amelita Pajarillo, LPN Level 4 International

Gladys Wood, Technician 2 Housekeeping- Mat leave till June 2012

Island Lake

Melanie Beardy, Office Assistant, Garden Hill Nursing Station

Sally Day, Office Assistant, Garden Hill Nursing Station (casual)

Julie Harper, Office Assistant, Garden Hill Nursing Station (casual)

Angela Mason, Office Assistant, St. Theresa Point Nursing Station

Crystal Harper, Office Assistant, St. Theresa Point Nursing Station (casual)

Grand Rapids

Melinda Munroe, Housekeeping Tech 2 (casual)

Norway House

Christina Carpenter, RN

Cheryl Dika, NP-Extended Practice

Maxine Feroce, RN

Shirley Hiebert, NP-Extended Practice

Ryan Iwasiw, NP-Extended Practice

Susan Laurent-Hippolyte, RN

Grace McDougall, RN

Diane Poker, RN

Cecil Robert, RN

Dorothy Scott, RN

Lorna Smith, RN

Carol Wass, RN

Nunavut

Lorna Doubt, OT /Team Leader

Zach Harris, OT

Francine Mach, PT

Wheeler Jeannine, SLP

Michael Wheeler, PT

Pam Becker, OT

Winnipeg

Bruce Martin, Director

Ken Hahlweg, Associate Director

Yvette Emerson, Associate Director

Melanie MacKinnon, Director of Programs and Administration

Monica Achtemichuk, Medical Rehabilitation Coordinator, Inuit

Kirsten Bourque, Diabetic Foot Nurse Clinician

Eileen Bouw, Retinal Screening Nurse

Mary Carey, Office Assistant, Inuit program

Julie Creasey, Media Communications & Reporting Coordinator

Olga Cruces, Receptionist
Anne Durcan, Program Coordinator, Inuit Health
June Grey, Temp Renal Health Program Manager
Robyn Gordon-Brown, Diabetic Foot Nurse Clinician
Michael Halgren, Administrative Assistant, Finance (temporary)
Ava Halpin, Retinal Screening Nurse
Kathy Harlos, Administrative Assistant, Recruitment Physicians, Nurses
Dwayne Koop, Renal Health Program Manager (parental leave Jan 2012)
Joy Langrell, Office Assistant, Med. Transcriptionist
Mary Moss, Office Assistant, Renal Health Program
Jenni Morris, Administrative Assistant, Finance
Jean Parry, Office Assistant
Kathy Risk, Office Assistant, Fly-in Physician Co-ordinator
Eunice Roulette, Administrative Assistant, Finance
Sylvia Sunstrum, Human Resources Coordinator
Lori Thiessen, Administrative Assistant, Travel/Consultants
Bonnie Tinker, Part time Med Rehab coordinator
Michelle Vandenbroeck, Part time MLTP coordinator
Abid Malik, International Internship
Jessica Clendenan, Manitoba-Garden Hill, Summer Student
Nathan Coleman, Nunavut-Rankin Inlet, Summer Student
William Cumming, Nunavut-Rankin Inlet, Summer Student
Nadine Kaefer, Nunavut-Repulse Bay, Summer Student
Eyal Kraut, Nunavut-Sanikiluaq, Summer Student
Lisa Omichinski, Nunavut-Repulse, Summer Student
Cesar Rona, Nunavut-Sanikiluaq, Summer Student

8.1d. The Inuit Health Program

The Inuit Health Program was created in 1999 as part of the J.A. Hildes Northern Medical Unit to support NMU program delivery in the Kivalliq Region of Nunavut. The Inuit Health Program is operating under the direction of Dr. Anne Durcan, Associate Director NMU. The programs delivered include community based family physician and medical rehabilitation services, itinerant specialist consultant services, audiology services, library support services, educational in-services, and professional licensing support. The Inuit Health Program coordinates student placements for both medical (undergraduate and post graduate) and medical rehabilitation students.

The number of specialty services provided has grown over the years and the range of specialities has expanded to 12 including Orthotics and Urology. Dr. Kevin Patterson, Internal medicine began a stress testing program in 2009. Dr. George Assuras, Department of Surgery began providing endoscopy services in Rankin Inlet the same year. Psychiatry services to the Kitikmeot region started in 2002 and are delivered by Dr. Clarke Wilkie.

The Medical Rehabilitation Services Program started with 2 physiotherapists, 1 occupational therapist (OT), and one speech language pathologist (SLP). An additional occupational therapy position was placed in Rankin Inlet in 2009. An administrative component was built into this position, allowing in region staff to be directly involved in coordination of services. Sanikiluaq rehabilitation services were also enhanced by hiring additional PT, OT, and SLP staff located in Winnipeg to provide community services.

Between 2001 and 2008 the NMU initiated and lead the development of the Community Therapy Assistant (CTA) Program. The CTA's enhance rehabilitation services across the territory and provide local training and employment opportunities. A feasibility study was completed and curriculum content was developed to be appropriate for the Nunavut context and to train Inuit community members. The CTA program was funded by the Government of Nunavut with the training program delivered in 2008 and 2009 and local Inuit CTA's employed in 2008-2009.

After repeated unsuccessful attempts to recruit a speech language pathologist to the Kivalliq in 2009, a trial of telespeech was done with itinerant services for speech language pathology delivered from Ontario. A review of the pilot project showed that families and staff preferred in person assessment by SLP. After the pilot project ended, a speech language pathologist was successfully recruited to the region. Much was learned from the pilot about the use of Telehealth, its acceptance and barriers for the clinical use of telespeech. Components of the pilot were accepted into clinical practice.

The J.A. Hildes Northern Medical Unit has offered clinical supports and services during times of special need in the Kivalliq, such as the H1N1 outbreak. The NMU has supported research in areas such as CPT1 deficiency by Dr. Cheryl Rockman-Greenberg and Hepatitis B research by Dr. Gerry Minuk.

Family physician services were delivered for the majority of this time through the NMU. Over the years recruiting, retaining and supporting the family physicians continued to be a challenge. A number of changes occurred within the Kivalliq and Nunavut over this 10 year period. In Rankin Inlet, a new regional facility was built and inpatient services were opened in November 2009. In 2008, the Government of Nunavut expressed their intent to undertake the recruitment and retention of family physicians. The transition period began in March, 2009 and ended in October, 2010 with all of the management of the family physicians now delivered by the Government of Nunavut.

Within the current contract (2009-2013), the cooperative relationship between the J.A. Hildes Northern Medical Unit and the Kivalliq Inuit Centre was recognized, and the University's role in assisting with patient support, advocacy and conflict resolution were outlined.

At the Inuit Health Office, Grace Spence retired in July 2010 and Mary Carey and Pat Elphick joined the team. Dr. Alexander Macaulay, co-coordinator of the program left in January 2009 to dedicate more time to clinical work. Sandra Toback left the program in 2009, to be replaced by Karen Holmes who has moved on to another role within the University. Monica Achtemichuk and Bonnie Tinker job share the position of Medical Rehabilitation Coordinator and support the therapists working in the Kivalliq region. The program continues to be supported by staff within the main NMU office.

Over the 2011/12, speciality consultant services will increase and support will be provided to Kivalliq physicians and the Medical Rehabilitation Program.

Current Staff

Dr. Anne Durcan, Associate Medical Director

Mary Carey, Office Assistant

Pat Elphick – Casual Office Assistant

Monica Achtemichuk , Medical Rehabilitation Services Coordinator

Bonnie Tinker, Occupational Therapist/Medical Rehabilitation Services Coordinator (Pt. Time)

Lorna Doubt, Occupational Therapist – Rankin Inlet

Francine Mach – Physiotherapist – Rankin Inlet

Michael Wheeler – Physiotherapist – Rankin Inlet

Jeannine Wheeler – Speech Language Therapist – Rankin Inlet

Zachary Harris – Occupational Therapist – Rankin Inlet

Family Physicians and Specialists

The J.A. Hildes Northern Medical Unit engages physicians to deliver family medicine and speciality services to all the areas covered by the NMU. Many specialists have been serving communities in Canada's north through many ways over many years. The family doctors live in communities or travel regularly, far and wide. While providing clinical service is the main focus of their NMU work, teaching, working with community, and facilitating research are other important aspects of it. We salute the doctors who have and are contributing.

List of NMU Family Physicians Fly-in Program Area

Physician	Community Served
Dr. Karen Appel	Poplar River
Dr. Nazmun Bhuiyan	Little Grand Rapids/Pauingassi
Dr. Danny Bisson	Bloodvein
Dr. Fondi Boyang	Grand Rapids/Easterville
Dr. Perry Gall	Grand Rapids/Easterville
Dr. Hanka Hulsbosch	Garden Hill
Dr. Kurt Jansen	Little Grand Rapids/Pauingassi
Dr. Carrie Lafournaise	Berens River
Dr. Faranak Mehrabi	Garden Hill
Dr. Afshin Sabzi Mobarakeh	St. Theresa Point
Dr. Wendy Smith	Red Sucker Lake/Wasagamach
Dr. Lawrence Spring	Pukatawagan
Dr. Joan Swain	Poplar River
Dr. Habib Vakilitahami	St. Theresa Point

List of Northern/Remote Residents

Dr. Cameron Goldie
Dr. Alex Nyirabu
Dr. Annepa Anton
Dr. Camisha Mayes
Dr. Colin McFee
Dr. Greg Pukay
Dr. Herman Chow
Dr. Ian Lau
Dr. James Edye-Rowntree
Dr. Mandy Buss
Dr. Martin Nguetsop
Dr. Michael Pasiorowski
Dr. Navneet Rehsia
Dr. Navrup Aery
Dr. Opeyemi Sobowale
Dr. Sasha Nyirabu
Dr. Suzy Pinnick

NMU Medical Specialty Programs

Program Area	Consultant	Specialty
Hodgson	Philip St. John Eric Stearns Maureen Collison Annette Fischer James Skinner Roger Saadia	Geriatrics Obstetrics/Gynecology Pediatrics Psychiatry Surgery
Norway House	Fernando Guijon Robert Lotocki vacant Ava Halpin Philip St. John Debbie Robinson w/ ultrasound nurses Andrew Mis Rao Adduri Vince Choy Tom Nitsch Brian Blakley Elizabeth Sellers & team Annette Fischer Elske Hildes-Ripstein Michael Moffatt Paul Barchet David Robinson	Colposcopy Diabetic Foot Clinician Diabetic Retinal Assessment Geriatrics Obstetrics/Gynecology Ophthalmology Orthopedics Ortho Cast Technician Orthotics Otolaryngology Pediatric Endocrinology (DER-CA) Pediatrics Psychiatry Rheumatology
Fly-In (Berens River, Poplar River, Bloodvein, Little Grand Rapids, Paungassi)	Robyn Gordon-Brown Ava Halpin Eileen Bouw Debbie Robinson w/ultrasound nurses Gerard McCarthy w/ultrasound nurses Darcy Beer James Carson Annette Fischer	Diabetic Foot Clinician Diabetic Retinal Assessment Obstetrics/Gynecology Pediatrics
Island Lake (Garden Hill, Red Sucker Lake, St. Therese Pt, Wasagamach)	Robyn Gordon-Brown Eileen Bouw Ava Halpin Gerard McCarthy w/ultrasound nurses Tom Nitsch Lesley Garber Elizabeth Sellers & team Annette Fischer Milton Tenenbein David Robinson Brendan McCarthy	Diabetic Foot Clinician Diabetic Retinal Assessment Obstetrics/Gynecology Orthotics Otolaryngology Pediatric Endocrinology (DER-CA) Pediatrics Rheumatology Surgery

NMU Medical Specialty Programs cont'd

Program Area	Consultant	Specialty
Pukatawagan	Robyn Gordon-Brown Eileen Bouw Ava Halpin Milton Tenenbein	Diabetic Foot Clinician Diabetic Retinal Assessment Pediatrics
Grand Rapids/ Chemawawiin	Robyn Gordon-Brown Brian Postl	Diabetic Foot Clinician Pediatrics
Churchill	Alex Tolton Fernando Guijon Robert Lotocki Robyn Gordon-Brown Ethan Rubenstein Carrie Corbett Heather Diamond Robert Sanders Lindsay DuVal Lesley Garber James Carson Jeffrey Ivey Keith Hildahl George Assuras Patrick Cho	Anesthesia (Peds) Colposcopy Diabetic Foot Clinician Internal Medicine Obstetrics/ Gynecology Ophthalmology Otolaryngology Pediatrics Psychiatry Psychiatry (Child & Adolescent) Surgery Urology
Kivalliq	Heather Schilling Bruce Buelow Fernando Guijon Robert Lotocki Nicola Matthews Pamela Orr Kevin Patterson Ethan Rubenstein Kim Wiebe Wendy Hooper Eric Stearns Trevor Chin Fook Ian Clark Paul Shuckett John Warnica David Huebert Tom Nitsch Warren Woods Lindsay DuVal Lesley Garber Allen Lam Darren Leitao James Carson Tanya Drews Leigh Fraser-Roberts	Audiology Colposcopy Internal Medicine Obstetrics/Gynecology Ophthalmology Orthopedics Orthotics Otolaryngology Pediatrics

NMU Medical Specialty Programs cont'd

Program Area	Consultant	Specialty
Kivalliq	Elske Hildes-Ripstein Murray Kesselman Michael Moffatt Brian Postl Tannis Wiebe Jonathan Boman Katharine Charlton Ryan Drew-Scott Frances Edge Keith Hildahl William Miller Clarke Wilkie George Assuras w/ endoscopy nurses Patrick Cho	Psychiatry Psychiatry continued Surgery (General & Scopes) Urology
Kitikmeot (Cambridge Bay)	Clarke Wilkie	Psychiatry
(Kugluktuk)	Steven Kremer	Psychiatry

Hospital Based Physicians

Community	Physician
Norway House	Paul Roos Azadeh Malekalkalami Ian Whetter Martin Nguetsop Mandy Buss Herman Chow Elizabeth Senderewich
Hodgson	Ibrahim Ismail Mahmood Nasir Muhanned Abood Nader Yacoub Mohammed Elkurbo (wknd only) Geneve Mustafa (wknd only) Memon Ghulam (wknd only)
Churchill	Deidre O'Flaherty Ludovic Delabie Kelly Fisher Karen Appel Keleigh James Sara Goulet Darren Barber

Hospital Based Physicians cont'd

Community	Physician
Hospital Locums – provide services to Hospital based communities	
	Kurt Jansen Nicole Riese Keleigh James Ken Cavers Roselin Titus Alex Singer Faranak Mehrabi

8.2 Centre for Global Public Health

The Centre for Global Public Health was established June 2008 in the Department of Community Health Sciences, in collaboration with the Department of Medical Microbiology, and under the leadership of Director Dr. James Blanchard and Associate Director Dr. Stephen Moses. The Centre is committed to investigating and responding to health and development issues internationally, and has ongoing projects in several countries, including India, China, Pakistan, Kenya, Bhutan, Sri Lanka, and the Maldives, as well as in Canada. This work is carried out through grants received from diverse funders including the Bill & Melinda Gates Foundation, The United States Agency for International Development, The World Bank, the Canadian International Development Agency and the Canadian Institutes of Health Research.

Research and program activities are in the fields of HIV prevention, care and support; sexually transmitted infections; maternal, neonatal and child health; inflammatory bowel disease; diabetes; and influenza, among others. Active projects include major HIV prevention, care and support initiatives in India, including evaluation of program impact; improving maternal and child health outcomes in India; studies on sexual and reproductive health in Kenya; capacity building for HIV prevention and care in China, support for HIV surveillance and prevention program development in Pakistan, Sri Lanka, Bhutan and the Maldives; examining socio-cultural aspects of implementing HIV vaccine programs in India, Kenya and China; and studies in Manitoba on both chronic and infectious diseases and public health importance.

The Applied Public Health Epidemiology Research Unit pre-dated the Centre and is now established as a unit within the Centre. It continues to provide a secure environment for the analysis of public health data sets, and for the development and testing of innovative methods of public health research and surveillance.

To inaugurate the Centre, a Global Public Health Research Week was held from May 19-21, 2009, at the University of Manitoba. The objective of the event was to increase awareness about the University's role in improving global health, and to examine how the Centre and its global partners can continue to advance the contribution of academia to global public health. Over 100 researchers, experts and students from China, India, Pakistan, England, the United States and Canada exchanged knowledge and helped to plan a research agenda for the Centre.

Another exciting initiative has been the development of a global academic consortium focusing on advancing the field of "Program Science". Planned and developed in partnership with the STD Division of the Centers for Disease Control (USA), funding from the National Institutes of Health (USA) was received to conduct a series of three meetings to develop the concept and application of Program Science in the HIV/AIDS field. The initiative will now focus on advancing developing country-level Program Science projects (in India, Kenya and Nigeria) and further developing scientific and programmatic approaches to close the gap between public health programs and science, with the Centre continuing to play a coordinating role. The Centre, also hosts a series of six Journal Club meetings per year, which attract diverse participants exploring numerous topics of global health interest.

In the current year, the Centre will continue to develop the Program Science Consortium, building on previous work. Activities will also continue on the numerous projects that are currently underway. In addition, several new proposals have been submitted for funding consideration or are under development, in a variety of areas, and we hope to soon begin work on some of these new initiatives.

Highlights

2006-2011 - Enhance Karnataka: Integrated HIV/AIDS prevention and care in India, project led by Dr. Stephen Moses was awarded \$22,000,000 by the United States Agency for International Development to fight AIDS in India. The award will allow faculty members and graduate students to travel to regions in southern India to develop HIV prevention, education and treatment programs;

Completed 2009 – Scaling up HIV prevention in Karnataka, project led by Dr. James Blanchard was awarded \$21,000,000 (additional 2.6 million for project extension in 2008) by the Bill & Melinda Gates Foundation;

2008-2013 – Scaling up HIV prevention in Karnataka, Phase II project led by Dr. Stephen Moses was awarded \$21,291,723 by the Bill & Melinda Gates Foundation;

2005-2011 – India AIDS Initiative. “Monitoring and evaluation of the Avahan project in India: impact assessment and cost-effectiveness analyses using enhanced surveillance methods and mathematical modeling of HIV transmission dynamics” project led by Dr. Stephen Moses was awarded \$7,053,165 by the Bill & Melinda Gates Foundation;

Completed 2009 – HIV prevention among mobile sex workers and men at risk in Karnataka and Maharashtra, project led by Dr. James Blanchard was awarded \$6 million by the Bill & Melinda Gates Foundation;

2006-2010 - Understanding the migration patterns and associated HIV/AIDS vulnerability among rural female sex workers and men in northern Karnataka and southern Maharashtra, project led by Dr. James Blanchard was awarded \$700,000 by the Bill & Melinda Gates Foundation;

Completed 2008 – A randomized controlled trial of male circumcision to reduce HIV incidence in Kisumu, Kenya, project led by Dr. Stephen Moses was awarded \$2,681,000 by the Canadian Institutes of Health Research;

2001-2010 – A randomized, controlled trial of male circumcision to reduce HIV incidence in Kisumu, Kenya, project led by Dr. Stephen Moses was awarded \$945,000 by the National Institutes of Health;

2007-2013 – Building capacity to respond to HIV/AIDS in China, project led by Dr. James Blanchard was awarded \$1 million by AUCC/CIDA – UPCD Tier 2;

2008-2010 – Individual, social and environmental barriers to HIV risk reduction among men who have sex with men and transgendered populations in India, project led by Dr. James Blanchard was awarded \$221,740 by the Canadian Institutes of Health Research;

2009-2015 - Moses S, Blanchard J. (Co-applicants) Canadian Institutes of Health Research. Co- applicant, grant “International infectious diseases and global health training program: four continents, one shared experience”, 2009-2015, \$1,950,000.

Dr. Stephen Moses: recipient of the 2010 Dr. John M. Bowman Memorial Winnipeg Rh Institute Foundation Award;

Dr. Stephen Moses: Time Magazine’s Top Medical Discovery in 2007;

Dr. Stephen Moses: recipient of the CIHR/CMAJ award for one of the “Top Canadian Achievements in Health Research” for work in global health and HIV/AIDS;

Dr. James Blanchard received his Tier 2 Canada Research Chair in Epidemiology and Global Public Health in 2004;

Dr. James Blanchard received the Frederick G. Banting Award from the Canadian Diabetes Association in 2006;

Dr. James Blanchard: recipient of the 2006 Rh Award for Health Sciences research at the University of Manitoba from the Winnipeg Rh Institute Foundation;

2011-2013 - Souradet Shaw, Research Associate in the Centre for Global Public Health. Canadian Institutes of Health Research - Frederick Banting and Charles Best Canada Graduate Scholarships Doctoral Award. This is a two year award which includes a stipend and allowance component.

Key Activities for 2011/12

Expanding program science

Implementing research in Kenya

Current Faculty and Staff

Dr. James Blanchard - Director
Dr. Stephen Moses - Associate Director
Dr. Lisa Avery - Faculty
Dr. Marissa Becker - Faculty
Dr. Shiva Halli - Faculty
Dr. Robert Lorway - Faculty
Souradet Shaw - Research Associate
Laura H. Thompson - Research Associate
Yichun (Joy) Wei - Research Associate
Doris Kuzma - Senior Project Manager
Carol Sigurdson - Administrative Assistant
Lynn Gauthier - Financial Assistant
Henry Dik - Information Technologist
Stella Leung - Programmer Analyst

8.3 Manitoba Centre for Health Policy

The Manitoba Centre for Health Policy (MCHP) is a Research Centre of Excellence that conducts population-based research addressing some of today's most difficult health questions. MCHP maintains the comprehensive population-based data repository on behalf of the Province of Manitoba used extensively by local, national and international research communities. Its research is used by provincial and regional planners to inform policy, ultimately creating opportunities for a healthier Manitoba. Research scientists using the Repository housed at MCHP have published in prestigious journals, ranging from methodological advances using administrative data to health services research on primary care, preventive care, mental health issues, quality of care, to population health issues including future needs of the older adult, variations in health status of First Nations and Métis people, and child health (including intervention research on healthy child programs).

Highlights

There's been a lot of development over the last 10 years at MCHP, much of it stemming from its first CFI Award in 1999. The funding helped build the first data laboratory of its kind in Canada and positioned MCHP as a leader in population and public health research. The new facilities opened in the Brodie Centre at the University of Manitoba's Bannatyne Campus on October 1, 2001.

In 2001, the Manitoba Centre for Health Policy and Evaluation shortened its name slightly by dropping "and Evaluation" from the title. The change didn't stop the research unit's growing reputation, nor did it hinder the expansion of the datasets in the Population Health Research Data Repository. The founders, Drs. Noralou and Leslie Roos, pioneered population health research using seemingly irrelevant administrative hospital records, which led to a number of accolades including the Health Services Research Advancement Award by CHSRF in 2001.

The Need to Know Team was started by Dr. Patricia Martens with funding from CIHR's Community Alliances for Health Research Program in 2001 and she now co-directs it with Dr. Randy Fransoo. The collaboration between MCHP researchers, high level planners from all 11 regional health authorities, and Manitoba Health won the national CIHR Knowledge Translation Award for regional impact in 2005.

The KT efforts of MCHP also extend to three annual workshops that focus on MCHP research. The Rural & Northern Healthcare Day has run since 1994 – the MCHP & Winnipeg Regional Health Authority Workshop started 10 years later, in 2003. A year after that, a similar event for Manitoba Health took shape. Attendance at all of these events continues to grow as the value of the roundtable discussions and shared information is recognized by policy-makers throughout the RHAs, government, and the research community.

In the last decade, MCHP research scientists published nearly 600 articles and brought in a total of \$36.75 million of research funding.

Many research scientists from MCHP have received CIHR New Investigator Awards – Drs. Verena Menec, Marni Brownell, Patricia Martens and Lisa Lix. Dr. Noralou Roos received a Tier One Canada Research Chair in population health (2003). Drs. Marni Brownell and Noralou Roos' research in the socioeconomic gradients within child health was rewarded with a \$750,000 (2003) research grant from RBC to continue work in that area. Dr. Alan Katz won a Clinical Research Professorship in Population Health from the Manitoba Medical Services Foundation in 2006 and Dr. Randy Fransoo won the Rising Star Award from CIHR in 2008 for knowledge translation.

On May 31, 2004 Founding Director, Dr. Noralou Roos stepped down as director. Dr. Patricia Martens assumed the leadership role as acting director until June 2005 when she was named Director. She introduced a new organizational structure that illustrates MCHP's three pillars, research, the repository, and knowledge translation.

Dr. Les Roos stepped down as Director of the Repository in 2007, but not before his vision for sharing information was recognized. In June of 2005 the Lupina Foundation granted an award of \$625,000 to support the web-based research and knowledge translation through the concept dictionary and glossary. These research tools continue to drive web traffic to MCHP.

A CFI Leading Edge Fund was announced in 2009, with the funding beginning in November 2010. MCHP received \$1,453,780 to fund the Manitoba Centre for Health Policy Leading-Edge Access & Data Enhancement Research Strategy (LEADERS) initiative. This funding was matched by the Manitoba Research Innovation Fund with additional funding coming from Manitoba Health. The project will help expand the Repository with the addition of 16 key databases such as justice, dentistry, and housing. It will also transform scientists' access to the data repository by developing and piloting six Remote Access Sites.

On March 8 and 9, 2010 MCHP celebrated a birthday with the 20th Anniversary Conference. The conference shared the challenges, successes, past, and future, with a wide range of topics presented and discussed over

two days. As a way to capture and share the knowledge MCHP produced a special edition supplement in the journal, *Healthcare Policy*, available on-line (http://umanitoba.ca/faculties/medicine/units/community_health_sciences/departmental_units/mchp/other_reports.html). One of the articles in this special edition highlights the history of MCHP, as researched by Dr. Gail Marchessault.

Capping off the last 10 years, in January 2011, MCHP (Dr. Patricia Martens) and Manitoba Health (Dr. Patricia Caetano) were named as key principal investigators in a collaborative partnership establishing pharmaco-epidemiology centres for a nation-wide research project evaluating post-marketing drug safety and effectiveness – CNODES (Canadian Network for Observational Drug Effect Studies).

After years of dedication Phyllis Jivan retired from her position in Research Support at MCHP on January 31, 2008.

Linda Henderson left her role as a Finance Officer at MCHP on February 1, 2007.

Debbie Molina retired from the University of Manitoba on June 21, 2007 after maintaining the role of Senior Finance Officer for a number of years.

Carmen Steinbach was a Data Analyst at MCHP. She retired on June 30, 2004.

Key Activities for 2011/12

Canadian Network for Observational Drug Effect Studies (CNODES)
A nation-wide research project investigating the drug safety and effectiveness of pharmaceuticals.

Ongoing deliverables and individual research projects.

Current Faculty and Staff

Patricia Martens, Director
Alan Katz, Associate Director, Research
Charles Burchill, Associate Director, Data Access & Use
Mark Smith, Associate Director, Repository
John Dziadek, Associate Director, Administration
Leslie Roos, Founding Director, Senior Research Scientist, Coordinator of External Project Relations
Noralou Roos, Founding Director, Senior Research Scientist
Marni Brownell, Senior Research Scientist
Dan Chateau, Research Scientist/Statistician
Malcolm Doupe, Senior Research Scientist
Greg Finlayson, Research Scientist
Randy Fransoo, Research Scientist
Colleen Metge, Research Scientist
Ruth-Ann Soodeen, Lead Research Coordinator
Elaine Burland, Research Coordinator
Ina Koseva, Research Coordinator
Chelsey McDougall, Research Coordinator
Kari-Lynne McGowan, Research Coordinator
Jennifer Schultz, Research Coordinator
Aynslie Hinds, Research Assistant
Ashton Hurley, Research Assistant
Jessica Jarmasz, Research Assistant
J. Patrick Nicol, Lead Data Acquisition Officer
Mahmoud Azimae, Data Acquisition Officer

Dave Towns, Data Acquisition Officer
Ruth Bond, Manager of Repository Access and Documentation
Jo-Anne Baribeau, Repository Access Coordinator
Ken Turner, Repository Data Analyst
Wendy Au, Data Analyst
Bogdan Bogdanovic, Data Analyst
Hui Chen, Data Analyst
Matt Dahl, Data Analyst
Shelley Derksen, Data Analyst
Natalia Dik, Data Analyst
Oke Ekuma, Data Analyst
Leonard MacWilliam, Data Analyst
Heather Prior, Data Analyst
Randy Walld, Data Analyst
Marina Yogendran, Data Analyst
Rod McRae, Information Technology Manager
Darrin Halabuza, Information Technology Support
Carole Ouelette, Executive Assistant, Office Manager, Human Resources Officer
Jack Rach, Communications Officer
Sophie Buternowsky, Senior Grants Accountant
Ariel Bautista, Grants Accountant
Linda Kostiuk, Grants Accountant
Angela Bailly, Research Support
Eileen Boriskewich, Research Support
Theresa Daniuk, Research Support
Kara Dyck, Research Support
Wendy Guenette, Research Support
Shannon Lussier, Research Support

8.4 Biostatistical Consulting Unit

The Biostatistical Consulting Unit (BCU) serves as a resource of statistical expertise for researchers and students conducting research both within and external to the University of Manitoba. The BCU renders assistance at every stage of the research process, from planning a study, through collecting data and statistical analysis, to interpretation of results. The BCU promotes two types of activities: collaboration and services. In addition, BCU offers non-credit courses on use of statistical computer software such as SAS and SPSS.

Highlights

Statistical consulting constitutes the primary activity of the BCU. Every year, the BCU held approximately 150 separate appointments with approximately 100 clients seeking consulting on issues related to biostatistics and data analysis, the BCU consultants implemented statistical analyses for more than 100 projects per year, with charged service hours ranging from 1 to 50 hours per project.

In addition to the fee-for-service consulting, the BCU provided more than 30 students and faculty members with free consulting services every year. Free consulting services are provided to faculty members who do not have any available research funds and are putting together a proposal for funding which would require assistance from the BCU.

Key Activities for 2011/2012

Deliver workshops on introductory and advanced Biostatistics to the Faculty of Dentistry, Faculty of Nursing and other departments to highlight the use of the BCU services.

Offer non-credit courses on use of statistical computer software such as SAS and SPSS.

Work with Research Data Centre to develop training course on longitudinal data analyses to encourage research use of Stats Canada data and the BCU services.

Take the opportunity when providing advice to researchers regarding their projects to also offer to conduct the analysis in a timely manner.

Provide and expand the free consulting service for faculty members on a case by case basis and to graduate students who do not have funds to support their research.

Current Faculty and Staff

Dr. Depeng Jiang – Director

Mr. Brenden Dufault - statistical consultant

Dr. Mahmoud Torabi - casual statistical consultant

8.5 The Manitoba Follow-up Study (MFUS)

MFUS is one of the world's longest running prospective longitudinal health studies. Begun in 1948 by Dr. FAL Mathewson, MFUS has been housed and operating continuously at the University of Manitoba medical school. Beyond its original objective of investigating the prognostic significance of electrocardiographic abnormalities in otherwise healthy individuals, over the years MFUS has broadened its research focus examining numerous aspects of cardiovascular disease epidemiology. These have included the natural history of ischemic heart disease and its precursors including conduction defects, arrhythmias, myocardial infarction, and sudden cardiac death, and their relationship with risk factors such as hypertension, smoking, excessive body weight, and other conditions. In more recent years, a parallel research focus has been established examining gerontological issues, including the dynamic process of successful aging, nutritional risk among the elderly, and primary/secondary control of aging individuals.

Since 2001, MFUS has presented its findings at international conferences including the European Society of Cardiology, the American Heart Association, the American Public Health Association, and the Gerontological Society of America, as well as at numerous national and local conferences and in numerous peer-reviewed journals. From its very beginnings, keeping in regular contact with its study members has been an integral part of MFUS. In celebration of its sixtieth anniversary, MFUS hosted a forum in Victoria BC in 2008 for MFUS members living on the west coast. Throughout much of the last decade, MFUS has been funded by the MHRC and CIHR (5-year grant awarded 2004-2009), and by the generous contributions of MFUS study members themselves.

Over the last decade, MFUS has encouraged collaboration with colleagues from other faculties and disciplines, including researchers in human nutrition, medical rehabilitation, psychology, and family science. Training future researchers and practitioners has also been an important MFUS activity. Since 2001, MFUS has had several graduate, undergraduate, medical and post-doctoral students in its midst, examining a range of topics including: wartime stress and cardiovascular health; longitudinal weight patterns in middle age and outcomes in later life; Brugada Syndrome; and assessment of older men's diets. MFUS has also played a key role in the content of the department's Advanced Biostatistics course, with many classroom examples and assignments originating from the rich MFUS dataset.

Key Activities for 2011/2012

Key activities include research on the relationship between survival to age 85y and disease conditions experienced during earlier life; changes in nutritional risk among older men; predictors of primary/secondary control in the elderly; and prospective examination of response shift among stroke survivors. Also, the potential for including family members in future surveys investigating the aging process will be assessed in the upcoming year. Barbara Masterman, office assistant, retired on March 31, 2011 after 8 years with the Manitoba Follow-up Study.

Current Faculty and Staff

Dr. Robert Tate – Director

Dr. Ted Cuddy

Dr. Christina Lengyel

Audrey Swift - Post-Doctoral Fellow

Madge Biddell - Administrative Assistant

Dennis Bayomi - Research/Data Analyst

9. Training Programs

The expertise and enthusiasm of CHS Faculty and collaborations with other researchers have resulted in three training programs, available to our Graduate Students on a competitive basis. There are three training programs associated with CHS.

9.1 Western Regional Training Centre (WRTC)

WRTC is a collaborative training initiative offered by the University of Manitoba and also the Universities of Alberta, British Columbia, Calgary, Saskatchewan, and Regina. From 2001 – 2011, WRTC was funded mainly by the Canadian Health Services Research Foundation (CHSRF) and the Canadian Institutes of Health Research (CIHR). This innovative program is designed to train students to conduct applied health services research, and equip them to respond to the research needs of a wide range of health-care policy makers. Since 2001, WRTC has provided educational training and financial support to students from a wide range of academic disciplines. In addition to participating in seminars and related activities, WRTC students are expected to complete a work experience practicum aimed at bridging the gap between research and practice.

Highlights

Training and financial support provided to 56 students from a variety of academic disciplines.

Peer reviewed funds received from the Canadian Institutes of Health Research (Strategic Training Initiative in Health Research), to help extend program delivery until 2015.

Long-term agreement signed with Manitoba Health to extent program delivery and student support.

Key Activities for 2011/2012

Program expansion to include Manitoba Health as a funding partner.

Continued training to develop highly skilled students with expertise in the area of health services research.

Continued development of the student work experience practicum, to further enhance student engagement and training.

Current Faculty and Staff

Dr. Malcolm Doupe, WRTC Director, University of Manitoba

Eileen Boriskewich, WRTC Program Coordinator

Current WRTC Advisory Group Members: Dr. Lawrence Elliott; Dr. Evelyn Forget; Dr. Michael Moffatt, Dr. Randy Fransoo, Dr. Patricia Caetano.

WRTC Student List

2010/2011

C. Andrew Basham, Community Health Sciences

Andrea Bombak, Community Health Sciences

Janelle de Rocquigny, Community Health Sciences

Sarah Federsel, Nursing

Muhammad Haq, Community Health Sciences
Margaret Haworth-Brockman, Community Health Sciences
Aynsliie Hinds, Community Health Sciences
Jackie Lemaire, Applied Health Sciences
Charlene Muzyka, Community Health Sciences
Saila Parveen, Community Health Sciences
Lorelei Pierce, Nursing
Elham Sadeh, Community Health Sciences
Deepa Singal, Community Health Sciences
Emily Skinner, Environment and Geography
Rae Spiwak, Community Health Sciences
Kellie Thiessen, Applied Health Sciences

2009/10

Andrea Rush-Sirski, Joykrishna Sarkar, Bosu Seo, Erin Shepherd, Dorian Watts, Yardena Zimmermann

2008/09

Crystal Bernier, Rachel Carr, Lisa LaBine, Leslie Penner, Jennifer Protudjer, Pearl Soltys

2007/08

Leah Galley, Paulette Richard, Michelle Albl, Shay-Lee Belik, Natalija Saurek-Aleksandrovska, Erin Schillberg, Tina Sorensen, Jennifer Spencer

2006/07

Koren Fisher, Stephanie Harvard, Souradet Shaw

2005/06

Songul Bozat, Sandra Hwang, Colette Raymond, Carla Ens

2001 - 2005

Genevieve Thompson, Dhiwya Attawar, Lisa Dwyer, Jonathon Franklin, Corinne Isaak, Tyler Jivan, Jennifer Magoon, Kara McDonald, Romy McMaster, Robin Miller, Lori Mitchell, Pearl Soltys, Patricia Sulaiman

9.2 Aboriginal Capacity and Development Research Environment

The Department also is home to the NEAHR program replacing the Aboriginal Capacity and Developmental Research Environment (ACADRE) training program funded by CIHR to provide fellowships for Aboriginal trainees at all levels and supports community-university research linkages.

See 8.1 Section of First Nations, Métis and Inuit Health.

9.3 CIHR International Infectious Disease & Global Health Training Program

Infectious diseases are a major threat to human health throughout the globe. From well-established pandemics, such as HIV, malaria and tuberculosis, to outbreaks, such as SARS, ebola and pandemic influenza, the cost in human lives increases every year. Infectious diseases are not contained within national borders and affect everything from cell biology and genetics to social system and national security. To come up with effective prevention and treatment strategies, a global multi-disciplinary approach is needed.

The International Infectious Disease and Global Health (IID&GH) Training Program will focus on advanced trainees (PhD students, postdoctoral fellows and clinical fellows) from all four of CIHR's pillars of research (basic, clinical, epidemiology and social sciences). They will be selected from a global pool of candidates and will receive their primary research training and supplemental academic programs offered by the Program in one of four major research centres. These research centres are sites of major research activities through

collaborations with the University of Manitoba (UM). These centres included Winnipeg (the home of the UM and the National Microbiology Laboratory and known nationally for its strength in infectious disease research); Nairobi, Kenya (where contributions to the epidemiology and basic science of HIV transmission and natural resistance goes back 20 years); Bangalore, India (since 2000 a respected leading centre in the development of innovated and effective HIV prevention strategies); and Medellin, Columbia (the newest of the UM's international sites and a focus for HIV surveillance and preventions efforts in the region). The Training Program will fund Canadian-based trainees in each of the 4 research centre and, in an effort to realize true human capacity development, will fund local trainees at each of the international centres. The Training Program has 3 major research foci (HIV, emerging infections and global health) and 4 themes (Aboriginal health, ethics, knowledge translation and professional development). The academic curriculum is composed of a primary research project, major courses, learning visits, a short-term research practica and a scientific discussion group.

Objectives:

- to equip trainees with the research, scientific knowledge and skills to become outstanding researchers in infectious diseases and global health.
- to create a novel and stimulating multidisciplinary and truly international research training environment that fosters creativity, opportunity, and innovation, and one that demands excellence.
- to harness the unique opportunity offered by the critical mass of infectious diseases and global health infrastructure, research opportunities and outstanding scientists in the training of the next generation of infectious disease researchers.
- to make available collaborative international research sites for the trainees' primary research projects, sites for research practica and major course offerings.
- to offer a shared learning environment, where trainees and mentors from all four of CIHR's research pillars and the four international training sites work cooperatively to explore issues of international infectious diseases and global health.

For those who are lucky enough to spend a portion of their research career in a developing country, a common sentiment is that the experience changed their lives and refocused their field of investigation. Imagine the impact on a young researcher of being involved in a training program that not only focuses on international health issues using a multidisciplinary approach, but does so from four major international training sites. From these sites the trainees, both Canadian and international, conduct their research, work as teammates on joint study projects and come together annually for intensive coursework at one of the major training sites. The theme of the International Infectious Disease and Global Health Training Program is "Four Continents, One Shared Experience".

There are a large number of people involved as collaborators, mentors, instructors and pillar leads in the program. A list of all of these can be found here -

http://www.iidandghttp.com/icid_leadership_mentors_IID_GHTP.html

The Program Advisory Committee assumes the primary advisory role in the program's organizational chart, as illustrated here - http://www.iidandghttp.com/icid_program_organization.html

Current Faculty and Staff

Dr. Keith Fowke - Program Director of the CIHR International Infectious Disease & Global Training Program (IID&GHTP). He also functions as the co-coordinator of the Ecology of Infectious Diseases course portion offered at the Winnipeg, Canada site

Dr. Stephen Moses - key leader and international site leader at the Bangalore, India site

Dr. Julius Oyugi - key leader and international site leader at the Nairobi, Kenya site

Dr. Carlos Rojas - key leader and site leader at the Medellín, Columbia international site

Dr. John Wylie - key leader in the training program and lead of the Practica portion

Dr. Javier Mignone - key leader in the training program and lead of the Infectious Minds Scientific Discussions portion of the training program.

Dr. Lawrence Elliott - key leader and co-coordinator Ecology of Infectious Diseases course portion offered at the Winnipeg, Canada site.

Dr. Francis Plummer - key leader in the training program.

Jude Zieske, administrative assistant

Eva Lindsey, administrative assistant

10. Meet the Faculty Members

Tracie O. Afifi

Assistant Professor

Areas of Expertise: psychiatric epidemiology, child maltreatment, intimate partner violence, problem gambling

Date of Appointment: 2010

Current Research Projects:

Co-Investigator. Centre for Research Development in Gender, Mental Health and Violence Across the Lifespan. Canadian Institutes of Health Research (CIHR), 2009-2013, (\$2,100,00);

Principal Investigator. Understanding Child Maltreatment, Intimate Partner Violence, and Substance Use Disorders in a Nationally Representative Adult Sample. Canadian Institutes of Health Research (CIHR) Centre for Preventing Violence Across the Lifespan Research Network (PreVAiL), 2010-2011, (\$15,000);

Co-Investigator. The Relationship between Childhood Sexual Abuse and HIV Infection among Women in India. Canadian Institutes of Health Research (CIHR) Centre for Preventing Violence Across the Lifespan Research Network (PreVAiL), 2010-2011, (\$15,000);

Principal Investigator. Mental and Physical Health Correlates of Physical Punishment and the Relationship between Physical Punishment and Family Violence: Data from a Nationally Representative Sample. Joint funding from Manitoba Medical Services Foundation (MMSF). (\$7,500) and the Winnipeg Foundation (\$12,500). 2011, (\$20,000);

Principal Investigator. Does conduct disorder increase the likelihood of experiencing childhood and adulthood traumatic events and posttraumatic stress disorder (PTSD)? University Research Grants Program (URGP), University of Manitoba, 2011, (\$7,424.00).

Marcia Anderson DeCoteau

Assistant Professor

Areas of Expertise: indigenous health, health disparities, health policy

Date of Appointment: 2007

Awards/Appointments:

Current President of the Indigenous Physicians Association of Canada

Section Head, Section of First Nations, Metis and Inuit Health

Lisa Avery

Assistant Professor

Areas of Expertise: maternal, neonatal and child health, sexual and reproductive health, prevention of maternal to child transmission of HIV, global health

Date of Appointment: 2009

Current Research Projects:

Principal Investigator. Factors that influence H1N1 vaccination uptake among pregnant women in Manitoba. Manitoba Health Research Council, 2010-2012, (\$120,000);

Principal Investigator. Ushirikiano: Building research capacity to improve maternal and child health outcomes in Kenya and Canada. Canadian-African Research Exchange Grant (CAREG) International Development and Research Centre (IDRC) and Canadian International Development Agency (CIDA), 2010-2012, (\$90,000);

Co-Investigator. Technical assistance to improve maternal, neonatal and child health outcomes through the National Rural Health Mission in Karnataka, India. Bill & Melinda Gates Foundation, 2009-2014, Grant (\$8,397,051 USD);

Co-Investigator. Harnessing mobile phone usage for HIV and horizontal health systems improvement: PMTCT. African Health Systems Initiatives (AHSI) International Development & Research Centre Canadian International Development Agency, 2009-2012, (\$350,000);

Co-Investigator. CIHR Team in the socio-cultural aspects of implementing HIV vaccine programs among MSM and FSWs in Asia and Africa". Canadian Institutes of Health Research, 2010-2013, Grant (\$741,300).

Key Activities:

2007-present, Editor, *Entre Nous*, The European Magazine for Sexual and Reproductive Health, WHO Regional Office for Europe;

2009-present, Director, Resident Research, Department of Obstetrics, Gynecology and Reproductive Sciences, University of Manitoba;

2009-present, Member, Society of Obstetricians and Gynaecologists of Canada International Women's Health Committee

Judith G. Bartlett

Associate Professor

Areas of expertise: qualitative research in aboriginal health (Métis and First Nations); quantitative Métis research; health administration; knowledge translation; community health development

Date of Appointment: 2004

Current Research Projects:

International and Canadian Principal Investigator. Resilient Indigenous Health Workforce Networks: Constructing an International Framework. Funder: CIHR, 2005-2011, (\$1,997,030);

Funder CIHR's Principal Investigator. Métis Need to Know Too - Implementing and Evaluating a Novel Knowledge Translation Model. Funder CIHR's PI Judith G. Bartlett. IAPH, 2008-2011, (\$200,000);

Principal Investigator. Cancer and Related Health Care Utilization in the Manitoba Métis Population. Funder Public Health Agency of Canada, (2010-2011) (\$35,000 as part of \$1,250,000 five-year Chronic Diseases Surveillance Program 2010-2015);

Principal Investigator. Diabetes and Related Health Care Utilization in the Manitoba Métis Population. Funder Public Health Agency of Canada, 2010-2011, (\$35,000 as part of \$1,250,000 five-year Chronic Diseases Surveillance Program 2010-2015);

Co-Principal Investigator. Ischemic Heart Disease in the Manitoba Métis Population. Funder Public Health Agency of Canada, 2011-2012, (\$35,000 as part of \$1,250,000 five-year Chronic Diseases Surveillance Program 2010-2015);

Co-Principal Investigator. Depression and Anxiety in the Manitoba Métis Population. Funder Public Health Agency of Canada, 2011-2012, (\$35,000 as part of \$1,250,000 five-year Chronic Diseases Surveillance Program 2010-2015);

Co-Principal Investigator. Métis Infant and Maternal Health in the Manitoba Population. 2011-2014, (\$22,000) (part of 1,250,000 five-year Chronic Diseases Surveillance Program 2010-2015) Note: this study is part of four-country collaboration in examining indigenous infant mortality including Métis, First Nations, Maori, and Alaska Natives;

Principal Investigator. Translating Health Information into Program Change; Developing a Communication Audit and Strategy. Funder CIHR-IAPH-NEAHR CIHR (part of CIHR-IAPH-NEAHR at the Manitoba Métis Federation, 2006-2010, (\$210,000);

Co-Principal Investigator. 'There is No Place Like Home'-Métis Aging in Place. (\$34,902) 2011-2012 (part of CIHR-IAPH-NEAHR at the Manitoba Métis Federation, 2010-2012,(\$210,000);

Co-Principal Investigator. 'It's a Long Way From Here'-Examination of Access to Care in Rural and Northern Métis villages. 2011-2012, (\$42,420)(part of CIHR-IAPH-NEAHR at the Manitoba Métis Federation 2010-2012, (\$210,000);

Co-Investigator. Risk Communication and Trust in Decision-Maker Action: Lessons from First Nations, Inuit and Métis Case Studies in Canada. CIHR, 2010-2012, (\$436,000).

Awards/Appointments:

2001-2009, Aboriginal Health and Wellness Centre of Winnipeg (part-time);

2007-present, Provincial Ministerial Appointments: Manitoba Health Research Council and its Research Advisory Committee;

2008-present, Canada Northwest FASD Research Network Board

2003, Recipient of National Aboriginal Achievement Award for Health

Key Activities:

2009-present, Faculty of Medicine Central Policy Development Section (CPDS) Member;

2009-present, Chair of CPDS Aboriginal Applicants Interview Panel;

2010-present, Interagency Advisory Panel on Research Ethics;

2010-present, TCPS2 Chapter Nine Implementation Advisory Committee;

2008-present, Canadian Index of Wellbeing Inaugural Board;

2005-present, United Way of Winnipeg Aboriginal Relations Council;

2004-present, Métis National Council - Health Committee;

2009-2011, University of Manitoba Senate for Faculty of Medicine;

2001-2005, National Aboriginal Health Organization Board of Directors;

2006-2010, National Aboriginal Health Organization Board Member

James Blanchard

Professor

Areas of Expertise: epidemiology, program science, HIV/AIDS, sexually transmitted infections, inflammatory bowel disease

Date of Appointment: 2001

Current Research Projects:

Principal Investigator. Building capacity to respond to HIV/AIDS in China. Canadian International Development Agency, 2007-13, Grant (\$998,000).

Principal Investigator. Technical assistance to improve maternal, neonatal and child health outcomes through the National Rural Health Mission in Karnataka, India. Bill & Melinda Gates Foundation, 2009-14, Grant (\$8,397,051).

Principal Investigator. Assessment of Sexual Networks for HIV Prevention Program Design. Ministry of Health, Royal Government of Bhutan, 2009, Contract (\$48,868 USD).

Principal Investigator. Development of a global HIV/STI research agenda: three symposia. National Institutes of Health (Office of AIDS Research), 2010, Contract (\$133,050 USD).

Principal Investigator. Assessment of Sexual Networks for HIV Prevention: Bhutan. Ministry of Health, Royal Government of Bhutan, 2010, Contract (\$74,250).

Principal Investigator. HIV prevention in vulnerable populations: addressing complexity in program design and implementation. Canadian Institutes of Health Research, 2010, Grant (\$100,000).

Co-Investigator. Monitoring and evaluation of the Avahan project in India: impact assessment and cost-effectiveness analyses using enhanced surveillance methods and mathematical modelling of HIV transmission dynamics, Bill & Melinda Gates Foundation, 2004-2011, Grant (\$3.45 million US).

Co-Investigator. Enhance Karnataka: Scaling up HIV Prevention, Care and Support, United States Agency for International Development (USAID), 2006-2011, Grant (\$22 million US).

Co-Investigator. Understanding the biological, clinical, and psychosocial determinants of health outcomes in inflammatory bowel disease: A research program, Canadian Institutes of Health Research, 2008-12, Grant (\$1.5 million).

Co-Investigator. Frequency of comorbidity in multiple sclerosis. Multiple Sclerosis Society, 2009-11, Grant (\$111,288).

Co-Investigator. Scaling up HIV prevention in Karnataka, phase 2. Bill & Melinda Gates Foundation, 2009-2014, Grant (\$22,000,000 US).

Co-Investigator. The CIHR International Infectious Diseases and Global Health Training Program: Four Continents, One Shared Experience, Canadian Institutes of Health Research, 2008-14, Grant (\$1,950,000).

Co-Investigator. Establishing the morbidity and mortality of ERCP: A population-based study, Canadian Institutes of Health Research and Canadian Association of Gastroenterology, 2010-11, Grant (\$90,000).

Co-Investigator. CIHR Team in the socio-cultural aspects of implementing HIV vaccine programs among MSM and FSWs in Asia and Africa, Canadian Institutes of Health Research, 2010-13, Grant (\$741,300).

Awards/Appointments:

Canada Research Chair in Epidemiology and Global Public Health (2004-2013)

Key Activities:

2007-present, Member, Advisory Board, Institute of Population and Public Health, Canadian Institutes of Health Research

2009-present, Member, Canadian HIV/AIDS Research Advisory Committee, CIHR.

2011-present, Member, Advisory Board, Canadian HIV Vaccine Initiative.

Sharon Bruce

Associate Professor

Areas of Expertise: diabetes epidemiology, medical anthropology, health of First Nations people, stress and illness, culture and health, community-based participatory research, ethnography.

Date of Appointment: 2001

Current Research Projects:

Principal Investigator. The role of established and non-traditional risk factors on diabetes and cardiovascular disease among a Manitoba First Nation population, CIHR-RPP, 2011-2013, (\$524,184);

Principal Investigator. Circumpolar Chronic Diseases Observatory, CIHR, 2006-2011, (\$370,000);

Principal Investigator. Utilization of MNCH Services: A Qualitative Inquiry, (James Blanchard is Principal Investigator on the larger Gates funded project; I did not receive the funding for this project but am leading a team on one qualitative study that is part of a larger project on maternal child health);

Co-Principal Investigator. Team Grant – Research program on prevention of chronic diseases in circumpolar region, CIHR, 2006-2011, (\$7.8 million);

Co-Investigator. Manitoba Network Environment for Aboriginal health research, CIHR, 2010-2012 (\$970,000).

Robert Chase

Assistant Professor

Areas of Expertise: occupational health, principally the management and prevention of work-related musculoskeletal injuries and pain conditions.

Date of Appointment: 1997

Key Activities:

Development and evaluation of the 'Life Story Board', an interview tool for helping professionals that creates a visual map of elements in a client's life and social world; 2009 formed Vidaview Information Systems Ltd to produce LSB toolkits, training and user support (www.vidaview.ca).

Malcolm Doupe

Assistant Professor

Areas of Expertise: aging, health services use, nursing homes, emergency departments.

Date of Appointment: 2010

Current Research Projects:

Co-Investigator. Re-imagining Long-term Residential Care: International Study of Promising Practices. Social Sciences and Humanities Research Council of Canada (SSHRC), 2009, (\$2,498,987);

Co-Principal Investigator. Enhancing Existing Capacity in Applied Health Services and Policy Research in Western Canada. Canadian Institutes of Health Research (Strategic Training Initiative in Health Research), 2009, (\$1,790,000);

Collaborator. Training Grant in Population Health Intervention Research (PHIRNET). Canadian Institutes of Health Research (Strategic Training Initiative in Health Research), 2009, (\$1,696,002);

Principal Investigator. Performing activities of daily living tasks: Determining why some nursing home residents experience declines in function. Manitoba Health Research Council, 2007, (\$56,425.00);

Principal Investigator. Linking a minimum data set with administrative data in Manitoba, to assess how these records agree and to pilot test if they can better define admissions to nursing homes. Canadian Institutes of Health Research, 2006, (\$48,949.00).

Awards/Appointments:

Senior Research Scientist, Manitoba Centre for Health Policy;

Manitoba Health Research Council Establishment Grant Recipient (2011). \$100,000

Key Activities:

2009-Present, Director, Western Regional Training Program, University of Manitoba;

2008-Present, University Representative, Health Information Privacy Committee, Manitoba Health.

S. Michelle Driedger

Associate Professor

Areas of Expertise: qualitative research methods, risk communication, risk perception, policy, environment, media, health, knowledge translation

Date of Appointment: 2006

Current Research Projects:

Principal Investigator. Advancing quality in cancer control and cancer systems performance in the face of uncertainty. Canadian Cancer Society Research Institute, 2010-2013, (\$711,198);

Principal Investigator. Risk and Trust in Government Action: Lessons from Case Studies in Canada. CIHR Operating Grant, 2010-2013, \$604,326 and MHRC-CIHR Regional Partnerships Program Award, 2009-2012, (\$241,642);

Principal Investigator. Examining pandemic communication Strategies of Public health Agencies for H1N1: How well did they work. CIHR Operating Grant, 2010-2012, (\$318,065).

Awards/Appointments:

Canada Research Chair in Environment and Health Risk Communication, Tier II, 2006-2012, (\$500,000);

Key Activities:

2011-2014, Member, CIHR Open Operating Grant Program Knowledge Translation Research (KTR) peer review committee;

2008-present, Editorial Board Member, International Journal of Qualitative Methods.

Brenda Elias

Assistant Professor

Areas of Expertise: Research interests include 1) developing comprehensive and theoretically informed approaches to health administrative data and applying mixed methods to understand the health of indigenous populations; 2) developing research and knowledge translation networks and partnerships to bridge individuals, families and communities across multi-jurisdictional health care systems; and 3) bridging population/public health, health services, clinical-community intervention research, and molecules to family to community research to address health inequalities.

Date of Appointment: 2006

Current Research Projects:

Principal Investigator. The Social Environment and the health of the First Nations women and men, CIHR, 2006, (\$419,744);

Principal Investigator, Manitoba First Nations Health Report Card, CIHR, 2006, (\$787,324);

Co-Principal Investigator. Manitoba Network Environment for Aboriginal Health Research, CIHR, 2007, (\$1,760,000);

NPI, Access to Quality Cancer Care and Control for Manitoba's First Nations, CIHR, 2007, (\$1,495,213);

Co-Principal Investigator. From Risk Factors to Culturally Sensitive Interventions: A Programmatic Approach to Aboriginal Suicide, 2007, (\$1,190,106);

Co-Principal Investigator. Manitoba Network Environment for Aboriginal Health Research Renewal, CIHR, 2010, (\$970,000);

Awards/Appointments:

Canadian Institutes of Health Research New Investigator Award, for a research program; 2006-2010

Key Activities:

May 2006-present, Canadian Institutes of Health Research (CIHR), Health Research Training Committee A Reviewer.

Lawrence Elliott

Associate Professor

Areas of Expertise: public health and preventive medicine; public health epidemiology

Date of Appointment: 1997 (part-time); 2000 (full-time)

Current Research Projects:

Co-Investigator. Exploring the role of established and non-traditional risk factors on diabetes and cardiovascular disease among a Manitoba First Nations Population, CIHR/MHRC, 2011-2013, (\$524,184);

Co-Principal Investigator. Evaluation of the HANS Project: A Community Approach to Improving Health and Wellbeing, Public Health Agency of Canada, 2011-2012, (\$32,725);

Co-Investigator. Frequency of comorbidity in multiple sclerosis, Multiple Sclerosis Society of Canada, 2009-2011, (\$111,288);

Co-Investigator. International Infectious Disease and Global Health Training Program: Four Continents, One Shared Experience, Canadian Institutes of Health Research, 2009-2014, (\$325,000/year);

Co-Investigator. Enhancing Existing Capacity in Applied Health Services and Policy Research in Western Canada, Canadian Institutes of Health Research, 2009-2015, (\$298,333/year) (\$1.79M total).

Key Activities:

Medical Council of Canada, Objective Structured Clinical Exam (OSCE) Committee (3 year term);

Specialty Committee for Public Health and Preventive Medicine, Royal College of Physicians and Surgeons of Canada (Currently Vice-Chair of Committee)

Evelyn L. Forget

Professor

Areas of Expertise: health economics

Date of Appointment: 1999

Current Research Projects:

Principal Investigator. Is a Guaranteed Annual Income Feasible and Sustainable in Canada? CIHR, 2011-2014, (\$180,000).

Key Activities:

Co-editor, *Journal of the History of Economic Thought*; Academic Director, Manitoba Research Data Centre;

Board Member, CRDCN (Canadian Research Data Centre Network);

Member, PHAC – Committee for the Economic Evaluation of Upstream Determinants of Health;

Editorial Board, *Économies et Sociétés*

Randall Fransoo

Assistant Professor

Areas of Expertise: health services research, rural health, cardiovascular health

Date of Appointment: 2008

Current Research Projects:

Principal Investigator. Temporal trends and sex differences in AMI incidence, mortality, and treatments in Manitoba, 1985-2010. Manitoba Health Research Council Operating Grant, 2010-2012 (\$51,580);

Co-Investigator. The interface between chronic inflammatory disease and critical illness. Manitoba Health Research Council Operating Grant, 2010-2012, (\$43,925);

Principal Investigator. Sex Differences in Heart Attack Mortality over 20 years in Manitoba. University of Manitoba Research Grants Program, 2009-2010, (\$7,500);

Co-Investigator. Characteristics and Outcomes of Patients Leaving Hospital Against Medical Advice. Manitoba Health Research Council (\$13,178) and Winnipeg Health Sciences Centre Foundation (\$12,537), 2009-2010.

Co-Investigator. A Profile of Health Status and Health Care Use of Immigrants in Manitoba. Manitoba Health: MCHP Deliverable, 2009, (\$200,000);

Co-Investigator. Epidemiology and long-term outcomes of critical illness in Manitoba. Manitoba Health: MCHP Deliverable, 2009, (\$200,000);

Principal Investigator. Obesity and Healthy Living. Manitoba Health: MCHP Deliverable, 2008-2011, (\$200,000);

Awards/Appointments:

Research Associate with MCHP

Gerry McDole Professorship Award recipient 2010-2013

Key Activities:

Health Services 2010; Population and Community Health 2011-2013. CIHR Operating Grant peer review panel

2010, CIHR – IHSPR review panel for Rising Star Awards

Social/Population health 2008, 2009, Manitoba Health Research Council Review Panel

2009, CIHI advisory group on health indicators for sparsely populated RHAs

Shiva S. Halli

Professor

Areas of Expertise: demography, advanced quantitative methods, HIV/AIDS in India

Date of Appointment: 2002

Current Research Projects:

Co-Principal Investigator. Attitude towards and outcomes of pregnancy among women living with HIV/AIDS in Karnataka, India, funded by WHO, 2011, (US \$63,000).

Awards/Appointments:

2010 Rajyotsava award, the highest civilian award by the Government of Karnataka State, India for the work on HIV/AIDS in Karnataka.

Key Activities:

Invited by the National AIDS Control Organization, Government of India to be a member of the technical committee to develop NACP IV.

Thomas Hassard

Professor

Areas of Expertise: application of statistical techniques to the solution of real world problems in health sciences, utilization of multivariate statistical methods, psychometric properties of performance assessment techniques, numerical tools for the assessment of the perceived quality of professional services

Date of Appointment: 1985

Key Activities:

Teaching three biostatistics courses in the Graduate Program;

Author of two biostatistics textbooks.

Depeng Jiang

Assistant Professor

Areas of Expertise: clinical trial design and intervention evaluation; latent variable analysis and structure equation model (SEM); longitudinal data analysis and multilevel model, finite mixture model.

Date of Appointment: 2010

Current Research Projects:

Co-Investigator. HOLD IT: Health Outcomes of Low Vitamin D in Toddlers: A TARGeT Kids Longitudinal Study. Canadian Institutes of Health Research (CIHR), 2010-2014, (\$563,200);

Principal Investigator. Factors Associated with Developmental Pathways of Child and Youth Health Problems. University Research Grants Program (URGP). University of Manitoba, Jan, 2011- Dec, 2011, (\$7,500);

Co-Investigator. Understanding and measuring work disability in rural and urban healthcare workers in Manitoba. Workers Compensation Board of Manitoba, 2011-2012, (\$199,500).

Alan Katz

Associate Professor

Areas of Expertise: family medicine

Date of Appointment: 2006

Current Research Projects:

Collaborator. Canadian Network for Observational Drug Effect Studies (cNODES), CIHR, 2011-2016, (\$3,500,000/ year for 5 years);

Co-investigator. Canadian Primary Care Sentinel Surveillance Network Public health Agency of Canada, 2010-2014, (\$10,800,000);

Co-Investigator. Evaluating physician payment programs: Standardized framework and its application to two Provinces. LOI CIHR, 2010, (\$13,500);

Principal Investigator. Impact of policy guideline variation on outcomes of novel H1N1 influenza in Aboriginal communities in BC, Manitoba, and Ontario. CIHR, 2010-2011, (\$99,975);

Co-Principal Investigator. MCHP's LEADERS Initiative: Leading-Edge Access and Data Enhancement Research Strategy. CFI, 2009-2014, (\$1,453,780);

Co-Investigator. A Population-Based Analysis of the Morbidity and Mortality of Gallbladder Surgery in the Elderly. Manitoba Health Research Council, 2009-2010, (\$29,900);

Co-Investigator. CIHR: *Injecting Evidence into Health Policy Coverage*. CIHR, 2009-2012, (\$350,000);

Co-Investigator. Health Care System Sustainability Through Longitudinal Efficiency: Improved Quality and Lower Costs. Canadian Institutes of Health Research, 2008-2013, (\$1,496,035 over 5 years);

Principal Investigator. CIHR/CCMB team in primary care oncology research, Canadian Institutes of Health Research, 2007- 2012, (\$1,469,096);

Principal Investigator. Primary care prevention: A population-based research program, Manitoba Medical Service Foundation, 2006-2009, (\$150,000).

Awards/Appointments:

2007, Best Research Award: Global perspectives on chronic disease prevention and management: Second International Conference;

2006-2009, MMSF Clinical Research Professorship in Population Medicine, Three year award (\$50,000/year) by the Manitoba Medical Services Foundation;

2006-Present, Associate Director, Manitoba Centre for Health Policy, Department of Community Health Sciences, Faculty of Medicine, University of Manitoba;

2003-Present, Researcher, Manitoba Centre for Health Policy, Department of Community Health Sciences, Faculty of Medicine, University of Manitoba;

2000-Present, Associate Professor, Department of Family Medicine, Faculty of Medicine. Geographical Full Time Clinician Teacher. Teaching responsibilities include primary preceptor of family medicine residents, preparing and presenting seminars to residents at resident academic days and leading tutorials for first, second and fourth year medical students on a variety of topics;

2000-Present, Associate Professor, Department of Community Health Sciences, Faculty of Medicine;

1996-Present, Director of Research, Department of Family Medicine, Faculty of Medicine.

Key Activities:

2008-2009, Chartbook on Quality Healthcare advisory committee; Canadian Health Services Research Foundation;

2007-Present, Board Member, Canadian Doctors for Medicare;

Joseph Kaufert

Professor

Adjunct Professor, Department of Anthropology, Faculty of Arts

Areas of Expertise: medical anthropology, bioethics and research ethics, Indigenous health, disability studies, qualitative research methods, interpretation and health communication

Date of Appointment: 1976

Current Research Projects:

Co-Principal Investigator. Centering the Human Subject in Health Research: Understanding the Meaning and Experience of Research Participation. CIHR, 2005-2012, (\$740,000);

Co-Principal Investigator, (team leader ethics theme) New Emerging Team Grant: End of Life Care and Vulnerable Populations. CIHR, 2005- 2012, (\$1,469,238);

Co-Investigator. Leaving for the city: an exploration of cultural, social, health and economic dimensions of Manitoba First nations relocating to urban centres to access medical care. CIHR, 2008-2012, (\$269,910);

Co-Investigator. Requirements for a 'good death' in hospice care. CIHR, 2008-12 (\$170,000);

Co-Investigator. Research ethics governance network grant. CIHR, (\$90,000).

Awards/Appointments:

2009-2010, Visiting Fellowship Award/Visiting Professorship, University of Victoria, Centre for the Study of Religion and Society

Key Activities:

International Editorial Board: Medical Anthropology Quarterly

International Research Ethics Training Initiative, Indiana University and Moi University

Patricia Kaufert

Professor

Areas of Expertise: social scientist with expertise in issues in women's health, research ethics and critical public health

Date of Appointment: 1980

Current Research Projects:

Co-Principal Investigator. Centering the Human Subject in Health Research: Understanding the Meaning and Experience of Research Participants. CIHR, 2005-2012, (\$740,000).

Joel David Kettner

Assistant professor

Areas of Expertise: public health theory and practice, medical education.

Date of Appointment: 1990.

Current Research Projects:

Co-Investigator: The epidemiologic and clinical features and risk factors for cases of severe respiratory illness of possible pandemic H1N1 origin in Manitoba, 2009. Manitoba Health, 2010-11;

Co-Investigator: Effectiveness of the Pandemic Influenza A Inactivated Monovalent Vaccines against Laboratory-Confirmed pandemic H1N1 infections - Manitoba, 2009. Manitoba Health, 2009-11.

Awards/Appointments:

GFT Community Health Sciences and Surgery;

Chief Public Health Officer Manitoba Health, emergency and urgent care physician WRHA;

Member of Decision-maker advisory team: Examining Pandemic Communications Strategies of Public Health Agencies for H1N1: How Well Did They Work?

Key Activities:

FPT Public Health Network Council;

Council of Chief Medical Officers of Health;

Scientific advisory committee National Collaborating Centre on Infectious Disease;

Association of Faculties of Medicine Public Health Educators Network;

Director, Undergraduate Medical Education;

Postgraduate Medical Education Committee;

Executive Committee;

Robert Lorway

Assistant Professor

Areas of Expertise: culture, health and sexuality; HIV prevention and vaccine acceptability; medical anthropology

Date of Appointment: 2009

Current Research Projects:

Principal Investigator. The Lovers Study: understanding risk for HIV transmission and acquisition within intimate partnerships of female sex workers in southern India. University of Manitoba Research Start-up Funds, 2011;

Principal Investigator. Sex Cells: a pilot study investigating cell phone-based sexual networks among men-who-have-sex-with-men and transgender males in South India. University of Manitoba, University Research Grants Program, 2011, (\$7,500);

Team Leader. CIHR team in the socio-cultural aspects of implementing HIV vaccine programs among MSM and FSWs in Asia and Africa. CIHR Team Grant, Canadian HIV Vaccine Initiative, March 2010 Competition, 2010-2013, (\$750,000);

Co-Investigator. Factors that Influence H1N1 Vaccination Uptake Among Pregnant Women in Manitoba. MHRC Operating Grant, March 2010 Competition, 2010-2011, (\$100,000);

Section Leader. The Kenya AIDS Vaccine Initiative (KAVI): A Centre of Excellence for HIV vaccine and Prevention Trials in East Africa. Section Leader "Community Capacity Building and Social Sciences", Global Health Research Initiative (GHRI) and Canadian HIV Vaccine Initiative (CHVI), 2010-2015, (\$1.8 million).

Awards/Appointments:

2009-2014, Canadian Institutes for Health Research (CIHR) New Investigator Salary Award, HIV/AIDS Services/Population Health Research, (\$300,000);

Key Activities:

2010-2012, OHTN Review Committee Member, the HIV and AIDS Community-Based Research Program

Sharon M Macdonald

Associate Professor

Areas of Expertise: public health practice, health service systems; aboriginal health care; community health services

Date of Appointment: 1984

Current Research Projects:

Co-Principal Investigator, UM Connecting to Kids, Academic Enhancement Fund. University of Manitoba, 2010-11.

Awards/Appointments:

Head, Department of Community Health Sciences;

GFT Community Health Sciences;

Chair, Manitoba Centre for Health Policy Advisory Committee;

Chair, Steering Committee for the Manitoba Patient Access Network (MPAN);

Part-time Commissioner Automobile Injury Compensation Appeal Committee (AICAC).

Key Activities:

Teaching, administration, community outreach and engagement.

Salaheddin Mahmud

Assistant Professor

Areas of Expertise: cancer epidemiology, pharmacoepidemiology, vaccine effectiveness and safety, influenza.

Date of Appointment: 2010

Current Research Projects:

Principal Investigator. Risk of colorectal cancer after a diagnosis of urogenital cancers: A population-based study. Manitoba Medical Sciences Foundation, 2010, (\$20,000);

Co-investigator. Colorectal Cancer Mortality after colonoscopy: A population-based cohort study. Manitoba Council of Health Research, 2009-2010, (\$53,188);

Principal investigator. The epidemiologic and clinical features and risk factors for cases of severe respiratory illness of possible pandemic H1N1 origin in Manitoba. Manitoba Health, 2009. 2010, (\$18,000);

Co-investigator. Bisphosphonate use and Risk of Colorectal Cancer: A population-based study. CancerCare Manitoba Foundation, 2009-2010, (\$44,937);

Co-investigator. Bisphosphonate use and Risk of Colorectal Cancer: A population-based study. American College of Gastroenterology, 2009-2010, (\$44,937);

Co-investigator. Cohort study of natural history of HPV infection and cervical neoplasia; CIHR Grant: renewal 2007-10, (\$168,000).

Awards/Appointments:

Feb 2011-Feb 2014, Junior Investigator Salary Award (\$150,000), The Canadian Cancer Society-Canada;

May 2010, Canada's Governor General's Gold Medal (for outstanding performance at the graduate level);

Mar 2010, The University of Manitoba Distinguished Dissertation Award (for ground breaking novel contributions to the field) University of Manitoba;

July 2006, The Mona and Allen Copp Award (\$17,000) The CancerCare Manitoba Foundation-Manitoba

2009, Effectiveness of the Pandemic Influenza A Inactivated Monovalent Vaccines against Laboratory-Confirmed Pandemic H1N1 Infections - Manitoba.

2009-11, Manitoba Health. Principal Investigator.

2011-2013, Establishment Grant; \$100,000. Manitoba Health Research Council. Principal Investigator.

2011-2012, Statin use and the risk of prostate cancer: A population-based case-control study; \$56,500. Manitoba Health Research Council. Principal Investigator;

Sentinel Network to Monitor Influenza Vaccine Effectiveness during Annual Outbreaks and Pandemics; \$50,000. BC-CDC and CIHR. Manitoba Principal Investigator.

Patricia J. Martens

Professor

Areas of Expertise: population health, health services research, biostatistics, rural/remote health, regional health authority, knowledge translation

Date of Appointment: 2002

Current Research Projects:

Co-Principal Applicant. DSEN Collaborating Centre for Observational Studies. Title: Canadian Network for Observational Drug Effect Studies (cNODES). CIHR Directed Grant, 2011-2016, (3,500,000/year for 5 years);

Principal Investigator. MCHP's LEADERS Initiative: Leading-Edge Access and Data Enhancement Research Strategy. (\$1,453,780 from Canada Foundation for Innovation), (\$1,453,780 from MRIF over four years);

Co-Investigator. Towards closing the gap: using evidence to identify the need for investments in primary health care services on BC First Nation reserves; CIHR Operating Grant, (\$360,548);

Co-Investigator. Consequences of Suicide Bereavement: A Population-Based Study. CIHR, 2010-2012, (\$137,296 over 2 years);

Co-Investigator. Context of the Mental Health Commission of Canada (MHCC) homeless initiatives in six cities: history of services, array of services, coordination/integration and costs of the 'de facto' severely mentally ill services system. CIHR PHSI grant, 2010-2013, (\$290,000);

Co-Investigator. Knowledge Synthesis: Finding the information parents want to know about treatments for children's anxiety. CIHR; 2010-2011, (\$100,000);

Co-Principal Investigator. Injecting Evidence into Health Policy Coverage: "KT'ing" the Mythbusters. CIHR, 2009-2012, (\$370,800);

Co-investigator. Research Demonstration Project in Homelessness and Mental Health. Mental Health Commission of Canada, 2009-2013, (\$3,750,000 total);

Co-Principal Investigator. Predictors and outcomes of prenatal care: vital information for future service planning. CIHR, 2009-2011, (\$100,000);

Co-Investigator. Building a Pediatric Autopsy Database for the Province of Manitoba. Diagnostic Services of Manitoba, 2009-2010, (\$12,000);

Co-Investigator. Strategic Training Initiative in Health Research. 2009-2015, (\$1,731,750);

Co-Investigator. CIHR Strategic Training Initiative in Health Research. Enhancing Existing Capacity in Applied Health Services and Policy Research in Western Canada. 2009-2015, (\$1,790,000);

Principal Investigator. 2007-2012 Manitoba Centre for Health Policy five-year contract with Manitoba Health. 2007 – 2012, (\$2,325,000).

Awards/Appointments:

April 1, 2010-March 31, 2015, Director, Manitoba Centre for Health Policy. Manitoba Health. Grant to the Manitoba Centre for Health Policy for research. (\$11,625,000);

March 2008-March 2013, CIHR PHAC Applied Public Health Chair. What works at the population level? An Applied Public Health Chair program of research focusing on population & public health issues. (\$925,000).

Key Activities:

2011-2013, CIHR's Financing, Sustainability, and Governance Working Group – member (Chair: Dr. Pierre-Gerlier Forest);

January 2011 – January 2013, Faculty Executive Council of the Faculty of Medicine (CHS representative);

CHSRF Board of Trustees member (Chair: Dr. Brian Postl). (2009-2012). Finance subcommittee (2009); Governance subcommittee vice-chair (2010).

2006-2009, 2009-2012, Member of the Senate Committee on University Research, University of Manitoba.

Verena Menec

Professor

Areas of Expertise: health and aging, determinants of health, health service use among older adults

Date of Appointment: 2000

Current Research Projects:

Principal Investigator. Age-Friendly Manitoba. Manitoba Seniors and Health Aging Secretariat, 2011-2012, (\$123,000);

Principal Investigator. Elder Abuse Services in Manitoba. Manitoba Seniors and Health Aging Secretariat, 2010-2011, (\$15,000);

Principal Investigator. Age-Friendly Communities, Active Aging Alliance. SSHRC (Community University Research Alliance), 2007-2012, (\$1,000,000);

Co-investigator. Translating Research in Elder Care (TREC). CIHR, 2007-2012, (\$4.7 million);

Co-Investigator. Health, Well-Being, and Vitality in Very Late Life: The Role of Everyday Physical Activity and Perceived Control. CIHR, 2007-2011, (\$238,780);

Co-Investigator. Timely Access & Seamless Transitions in Rural Palliative/End-of-Life Care, CIHR, Interdisciplinary Capacity Enhancement (ICE) grant, 2006–2010, (\$787,427);

Co-Investigator. Connectivity of older adults in rural communities: Health in context. CIHR, 2009-2012, (\$225,000);

Co-Investigator. Canadian Longitudinal Study on Aging (CLSA)-Mobility Initiative (CMI) - An Emerging Team in Mobility in Aging. CIHR, 2008-2013, (\$1,487,100).

Michael Moffatt

Professor

Areas of Expertise: epidemiology, child health, health systems, health care quality and safety

Date of Appointment: 1983

Current Research Projects:

Co-Principal Investigator. Silos and Social Identity. CIHR, 2009, (\$50,000);

Co-Principal Investigator. Accuracy of Immunization Documentation in Pediatric Admissions to Children's Hospital. 2010, (\$1410);

Co-Principal Investigator. Evaluation of Acute care Surgical Services following changes in access in the WRHA. Internally funded at WRHA, 2010;

Co-Principal Investigator. Systematic Review of Literature on systemic changes to acute care surgical services. 2010, Unfunded;

Co-Principal Investigator. Evaluation of Free First Visit Program of the Manitoba Dental Association. MICH, 2010, (\$5000);

Co-Principal Investigator. Vitamin D and Iron levels in children with severe early childhood caries – a cross sectional study, MICH, 2010, (\$44,000);

Co-Principal Investigator. Physician Decision-Making with regard to Neuro-imaging in children with expanding head circumference. 2010, unfunded;

Awards/Appointments:

Holder of Post-doctoral Fellow awards for Dr. Carrie Daymont, 2010, \$70,000, shared by MICH and MHRCP.

Key Activities:

Executive Director, Research and Applied Learning, Winnipeg Regional Health Authority;

Councilor, Health Council of Canada (since 2011);

Physician member, Mercury Disability board, Northwestern Ontario;

Co-Chair, Western Regional CEO's Indicator Benchmarking Group (since 2009);

Member, Advisory Board, national Sentinel Incident Reporting System, Canadian Institute for health Information

Pierre Plourde

Associate Professor

Areas of Expertise: population and public health, communicable diseases control, infectious diseases, travel health and tropical medicine, sexually transmitted and bloodborne infections control and harm reduction

Date of Appointment: 2000

Key Activities:

Board of Directors (member) - Health Partners International of Canada

Clinical Decision Making Test Committee (chair) - Medical Council of Canada

Central Examination Committee (member) - Medical Council of Canada

Committee to Advise on Tropical Medicine and Travel (chair) - Public Health Agency of Canada

Medical Officer of Health - Winnipeg Regional Health Authority

Leslie L. Roos

Distinguished Professor

Areas of Expertise: health services research, health reform, administrative data, clinical epidemiology, longitudinal studies, population health, child health, outcomes research

Date of Appointment: 1973

Current Research Projects:

Co-Principal Investigator. Consequences of suicide bereavement: A population-based study in Manitoba. CIHR, 2010-2012, (\$137,296);

Co-Principal Investigator. Manitoba Centre for Health Policy. Government of Manitoba, 2007-2012, (\$11,625,000);

Co-Principal Investigator. Western Regional Training Centre in Health Services Research. CHSRF, 07/2006-06/2011, (\$1,687,000);

Co-Principal Investigator. Enhancing existing capacity in applied health services and policy research in Western Canada. CIHR, 2009-2015, (\$1,790,000);

Co-Principal Investigator. Evaluation of mitigation strategies for pandemic preparedness in Canada. CIHR, 2009-2012, (\$94,750);

Principal Investigator. Research support fund. University of Manitoba, 2007-2015, (\$44,000).

Awards/Appointments:

2010, Elected to the Life Sciences Division, Academy of Science, Royal Society of Canada;

2010, Elected Fellow, Canadian Academy of Health Sciences;

2006, Distinguished Professor, University of Manitoba;

2003, Best Poster at National Conference, CIHR, Health Services Research and Policy;

2003, Highly Cited Investigator, Institute for Scientific Information;

1991-2006, Director of the Population Health Research Data Repository and Founding Director, Manitoba Centre for Health Policy;

1980-present, Professor and Distinguished Professor, Department of Community Health Sciences, Faculty of Medicine

Key Activities:

Created an information-rich environment in Manitoba to facilitate the study of health and health care;

Continued to play a lead role in setting up the Population Health Research Data Repository which investigators from many disciplines can access for research in clinical epidemiology, health services, and population health;

Contributed to the Epidemiology Supercourse;

Developed the Concept Dictionary, a web-based systematic approach to sharing working knowledge

Noralou P. Roos

Professor

Areas of Expertise: population health, administrative data, early childhood wellbeing

Date of Appointment: 1973

Current Research Projects:

Principal Investigator. Injecting evidence into health policy coverage: KT'ing the Mythbusters. CIHR and Manitoba Health Research Council, 2009-2012, (\$467,800);

Co-Principal Investigator. Enhancing existing capacity in applied health services and policy research in Western Canada. CIHR, 2009-2015, (\$1,790,000);

Co-Principal Investigator. Fetal Alcohol Disorder: A project using Administrative Data, Manitoba Centre for Health Policy, 2008-2011, (\$45,000);

Awards/Appointments:

2011, Fellowship in the Canadian Academy of Health Sciences (CAHS);

2011, Inaugural Population and Public Health Research Milestone Award, CIHR and CPHA;

2010, Hall Laureate, Emmett Hall Memorial Lectureship, Justice Emmett Hall Memorial Foundation;

2009, Elected to the Life Sciences Division, Academy of Science of the Royal Society of Canada;

2005, Order of Canada awarded by Governor General.

Key Activities:

Advisory Board, Drug Safety and Effectiveness Network CIHR;

Council of Canadian Academies' Committee on the Assessment of the State of Science and Technology in Canada;

Top 100 Canadian scientists according to The Institute of Scientific Information;

Member of the Prime Minister's National Forum on Health, the Interim Governing Council setting up the Canadian Institutes for Health Research (CIHR);

Received the Order of Canada;

Elected a member of the Academy of Sciences of the Royal Society of Canada;

Led the Canadian Drug Policy Development Coalition working with Health Canada and the provinces which resulted in the funding of the Drug Safety and Effectiveness Network (DSEN) at CIHR;

Working with community groups, business and government to bring research on 'At-Risk' kids to the policy table;

May, 2010 delivered the Emmett Hall Memorial Lecture, at the Canadian Association for Health Services and Policy Research Conference;

Created EvidenceNetwork.ca—an evolving Canadian health policy resource designed with the needs of journalists in mind.

Gladys L. Stewart

Instructor 11

Areas of Expertise: undergraduate education, experiential learning, injury prevention

Date of Appointment: 2000

Key Activities:

Planning, coordination and development of teaching areas for the undergraduate education curriculum in Community Health Sciences;

Coordination activity includes collaborative work with the AFMC Public Health Educator's Network and the Department of Medical Education, Faculty of Medicine;

Educational posters on public health education have been presented at the Canadian Conference of Medical Education and have included the topic areas of 'Community Health in Undergraduate Education' (2001), 'Aboriginal Health' (2003, 2007), 'Public Health Advocacy and Food Security' (2008), 'Disabilities & Independent Living' (2009) and 'Health Equity' (2009);

June 2011, Presentation of a workshop at the Food Banks Canada conference in Winnipeg titled, "Linking those you help with the healthcare community";

2002-2009, Served on the Canadian Dental Hygienists Association Research Advisory Committee and the Editorial Review Board of the Canadian Journal of Dental Hygiene.

Robert B Tate

Associate Professor

Areas of Expertise: biostatistics, longitudinal studies, aging

Date of Appointment: 2001

Current Research Projects:

Principal Investigator. Successful Aging of Older Canadian Males: The Manitoba Follow-up Study. CIHR-MHRC Regional Partnership Program operating grant, April 2009 to March 2011, (\$344,666);

Principal Investigator. The Dynamic Process of Successful Aging: The Manitoba Follow-up Study. CIHR operating Grant MOP-67019 grant, April 2004 to March 2009, (\$788,086);

Principal Investigator. The Manitoba Follow-up Study: Beyond Fifty Years. MHRC operating grant, July 2001 to July 2003, (\$95,000).

Awards/Appointments:

Recipient of the Betty Havens Award in Longitudinal Research presented October 2009 by the Canadian Association on Gerontology.

Key Activities:

Director of Graduate Program;

Director of Manitoba Follow-up Study;

Recent Scientific Officer and Chair for peer-review committees of CIHR;

Elected to Senate of UM.

Mahmoud Torabi

Assistant Professor

Areas of Expertise: spatial and temporal models, cluster detection, longitudinal data analysis, and small area analysis

Date of Appointment: 2010

Current Research Projects:

Co-Principal Investigator. Biostatistical Methods for Disease Cluster Detection and Spatial Modelling, CIHR, 2009-2012, (\$212,205);

Co-Principal Investigator. Is a Guaranteed Annual Income Feasible and Sustainable in Canada? CIHR, 2011-2014, (\$195,000);

Co-Principal Investigator. Exploring the Role of Established and Non-traditional Risk Factors on Diabetes and Cardiovascular Disease Among a Manitoba First Nation Population. CIHR and MHRC, 2011-2013, (\$524,184);

Principal Investigator. Spatial Modeling of Incidence Rates in the Province of Manitoba, URGP, 2011, (\$7,500);

Principal Investigator. Torabi M. Small Area Estimation, and Spatial Statistics, NSERC, 2011-2016, (\$60,000);

Awards/Appointments:

Adjunct Professor in the Department of Statistics at the University of Manitoba

Key Activities:

Referee for some peer-reviewed journals such as International Journal of Health Geographics, Journal of Statistical Planning and Inference, Computational Statistics and Data Analysis, and Journal of Survey Methodology

Appendix A: CHS Colloquium Series (April 2009 - March 2011)

Date	Presenter	Title of Presentation
3-Apr-09	Richard Rusk	An Emergent Zoonotic Disease
17-Apr-09	Bosu Seo	The Effect of English Language Skills on the Health of U.S. Hispanics
24-Apr-09	Toni Morris-Oswald	Show and Tell: older adults reveal how age-friendly their communities are through photovoice technique
1-May-09	Joel Kettner	The New Public Health Act. 'Does it meet the Public's needs of today and tomorrow?'
8-May-09	Undergraduate Presentations: Christopher White Illan Schwartz Lucy Hwi	(Award for Outstanding Paper in CHS) Waiting list management in Canada Out of Africa: Male circumcision as a public health intervention against HIV/AIDS in sub-Saharan Africa Calcium Supplementation: a review of benefits and risks in post-menopausal women
15-May-09	Ivy Lynn Bourgeault	Comparing Approaches to the Issue of Internationally Educated Health Professionals in Canada, U.S., U.K. & Australia: Policy Problem or Solution
22-May-09	Leonard Syme	A Conversation with Dr. Leonard Syme
5-Jun-09	Cindy Jardine	Investigating Health Risk Concerns in Northern Aboriginal Communities using PhotoVoice
12-Jun-09	Robert Chase	The Life Story Board: An innovation in pictorial methods for assessment, counselling and psychosocial research
19-Jun-09	Evelyn Shapiro	The Clouded Future of Medicare
18-Sep-09	James Blanchard	Centre for Global Public Health: Who We Are and What We Do
2-Oct-09	Pat Martens	The Manitoba Centre for Health Policy: Who We Are and What We Do
30-Oct-09	Ian Clara	The Manitoba Research Data Centre – Making Your Research Easier!
20-Nov-09	Shiva Halli	HIV Risk Associated with Mobile Female Sex Workers in the Context of Jatras (Carnivals) in Karnataka, India
27-Nov-09	Barb Payne	The Centre on Aging: Who We Are and What We Do
11-Dec-09	Noralou Roos	Focusing on the Health and Well-Being of At-Risk Kids: Both in Manitoba and Down Under
18-Dec-09	Bruce Martin	Northern Medical Unit - Who We Are and What We Do
15-Jan-10	Evelyn Forget	Dauphin's Experiment with Social Justice: Using Health Administration Data to Assess Outcomes of Guaranteed Annual Income Field Experiment
29-Jan-10	Javier Mignone & 9 circles	Caregiving Networks and HIV: A Photographic Look at Networks of Care in Winnipeg and Regina
12-Feb-10	Margaret Fast	National Collaborating Centre for Infectious Diseases: Who Are We; What Do We Do
24-Feb-10	Faran Emmanuel	Developing Second generation Surveillance for HIV/AIDS in Pakistan: The CGPH experience
5-Mar-10	Elizabeth Cooper	"Them Days You Don't Get Sick" Community perceptions about the role of hospitals in the western Arctic during the mid-20th century.
10-Mar-10	Fiona Stanley (Aus)	Research for children in a complex world. Epidemiology for effective prevention.
12-Mar-10	Jane Freemantle (Aus)	Indigenous Child Health in the Early Years: making the invisible, visible
19-Mar-10	James McKenna	Rethinking Healthy Infant Sleep
9-Apr-10	Harminder Singh	Wait time for Gastrointestinal Services in Manitoba
16-Apr-10	Joyce Slater	The widening Canadian energy gap and our obesogenic environment

CHS Colloquium Series (April 2009 - March 2011) CONTINUED

Date	Presenter	Title of Presentation
23-Apr-10	Rob Lorway	<i>Exploring the Sexual Networks of MSM in three cities of Karnataka: Network Formation and Sexual Contact Patterns</i>
30-Apr-10	Linda Larcombe	<i>No Shelter from the Storm: Housing and Tuberculosis in Lac Brochet: Research at the Crossroads</i>
7-May-10	Undergraduate Presentations: Sean Udow Deanna Cook	<i>(Award for Outstanding Paper in CHS)</i> <i>Vitamin D and Multiple Sclerosis: Illuminating Shadowed Ground</i> <i>Poisoning Related Injuries in Children</i>
21-May-10	Eric Bohm	<i>Orthopedic Research at the Concordia Hip and Knee Institute. Overview of programs and potential linkages with CHS</i>
3-Jun-10	Jeanine Bustros	<i>The Canadian Health Measures Survey</i>
11-Jun-10	Rossbrook House	<i>Bringing Health Sciences back into the Community: Visit to Rossbrook House</i>
10-Sep-10	Janice Linton - CHS Link Librarian	<i>Tools And Services For Enhanced Community Health – There’s Something For Everyone At Your Health Sciences Library</i>
1-Oct-10	Marcia Anderson DeCoteau	<i>Present Challenges and Future Directions of Public Health: Considerations for Indigenous Peoples</i>
8-Oct-10	Sharon Macdonald & Noralou Roos	<i>Let’s Take It to the Streets!</i>
14-Oct-10	Sabhash Lele	<i>Estimability And Likelihood Inference For Generalized Linear Mixed Models Using Data Cloning With Application To Public Health</i>
15-Oct-10	Katharina Stieffenhofer & Eleanor Waitowicz	<i>"And this is my garden" documentary about the Mel Johnson School Gardening Project</i>
22-Oct-10	Maureen Heaman	<i>Factors Associated with Inadequate Prenatal Care Among Inner-City Women in Winnipeg</i>
5-Nov-10	Benita Cohen	<i>Building Public Health Capacity to Promote Health Equity in Manitoba</i>
18-Nov-10	Dennis Embry	<i>Behavioural Vaccines And Evidence-Based Kernels For Young People In Manitoba: Non-Pharmaceutical Approaches For The Prevention Of Mental, Emotional And Behavioural Disorders</i>
19-Nov-10	Margaret Fast, Joanne Embree, Philippe Lagace-Wiens, NCC-ID	<i>Antibiotic Use & Resistance</i>
10-Dec-10	M-A Gagnon	<i>The Economic Case for Universal Pharmacare: Costs and Benefits of Publicly Funded Drug Coverage for All Canadians</i>
17-Dec-10	Ryan Zarychanski	<i>Finding new uses for old, inexpensive therapies: A research program to evaluate the use of heparin in severe infections</i>
14-Jan-11	Laura Donatelli	<i>An Orientation to the Canadian Best Practices Portal: Learning What Works in Health Promotion and Chronic Disease Prevention</i>
21-Jan-11	Julianne Sanguins	<i>Going the Distance - The Joys and Challenges of Distance Education</i>
28-Jan-11	Devin Dietrich	<i>The Need for Métis Research: Métis Specific Research Principles</i>
4-Feb-11	Ian Clara	<i>3 Research Projects at the Statistics Canada Manitoba Research Data Centre</i>
18-Feb-11	Lynne Warda, co-presenter Sande Harlos	<i>Promoting Bicycle Helmet Use in Winnipeg: Time for Legislation?</i>
25-Feb-11	Mahmoud Torabi	<i>Introduction to Spatial Statistics and Application to Cancer Data</i>
4-Mar-11	Lauren Yallop, Deepa Singal, Janelle de Rocquigny, Brenda Comaskey	<i>Population-Based Mental Health Research in Manitoba: Rapid-Fire Presentations from Current Graduate Students</i>
18-Mar-11	Debra Pepler	<i>The Development of Aggression and Links to Depression</i>
25-Mar-11	Donna Barry - Partners in Health	<i>Healthcare in Post-Earthquake Haiti</i>