



SPread Sheet

Volume 1, Issue 4, December 2005

The Standardized Patient Program is located in the Old Medical Sciences Building

T151-770 Bannatyne Ave.
Winnipeg, MB, Canada
R3E 0W3

Phone:
(204) 480-1307

Fax:
(204) 977-5682

E-mail:
webstert@cc.umanitoba.ca

Home Page:
http://www.umanitoba.ca/faculties/medicine/education/ed_dev/spp.html

NEWSLETTER EDITOR

Tim Webster

SP PROGRAM STAFF

Eunice Friesen, Director

Holly Harris, SP Coordinator

Tim Webster, SP Coordinator

Lezlie Brooks, SP Coordinator

Donna Mamott, Office Assistant

IN THIS ISSUE:

Season's Greetings	<i>Legally revised for our first holiday issue</i>	1
tranSPositions	<i>Upcoming changes to your newsletter</i>	2
Funny Bone the 1st	<i>It's not funny if I have to explain it</i>	2
reSPOnses	<i>Comments on our third issue!</i>	3
Upcoming Sessions	<i>Mark your calendars</i>	3
Article	<i>That's What I Said, But Not What I Meant!</i>	3,4
Staying Professional	<i>Feedback A to I</i>	5
SPotlight On	<i>Eunice Friesen, SP Program Director</i>	5
Funny Bone the 2nd	<i>Because once is never enough</i>	6
By The Way	<i>Stay in the know</i>	6
inSignia, Please	<i>Your chance to design the new SP logo!</i>	6
Event Listings	<i>Who's doing what, where, and when</i>	7
Submissions	<i>Have your say</i>	7
Funny Bone the 3rd	<i>Finally, the last laugh</i>	7

LEGALLY REVISED SEASON'S GREETINGS

Please accept with no obligation, implied or implicit, our best wishes for an environmentally conscious, socially responsible, low-stress, non-addictive, gender-neutral celebration of the winter solstice holiday, practiced within the most enjoyable traditions of the religious persuasion of your choice, or secular practices of your choice, with respect for the religious/secular persuasions and/or traditions of others, or their choice not to practice religious or secular traditions at all . . . and a fiscally successful, personally fulfilling, and medically uncomplicated recognition of the onset of the generally accepted calendar year 2006, but not without due respect for the calendars of choice of other cultures, and without regard to the race, creed, colour, age, physical ability, religious faith, or sexual orientation of the wishee.

(continued on page 2)

Copyright © 2005
University of Manitoba

Permission to reproduce and/or distribute any of the material contained herein must be obtained from the Standardized Patient Office.

ISSN 1715-5452

LEGALLY REVISED SEASON'S GREETINGS *(continued from page 1)*

This wish is limited to the customary and usual good tidings for a period of one (1) year, or until the issuance of a subsequent holiday greeting, whichever comes first. "Holiday" is not intended, nor shall it be considered, to be limited only to Judeo-Christian celebrations or observances, or to such activities of any organized or *ad hoc* religious community, group, individual or belief or absence thereof.

Please note:

By accepting this greeting, you agree to the following terms:

- This greeting is subject to clarification or withdrawal, and is revocable at the sole discretion of the wisher at any time, for any reason or for no reason at all.
- This greeting is freely transferable with no alteration to the original greeting.
- This greeting implies no promise by the wisher to actually implement any of the wishes for the wishee her/himself or others, or responsibility for the consequences which may arise from the implementation or non-implementation of same.
- This greeting is void where prohibited by law.

Source: [The Negapage](http://www.c4vct.com/kym/humor/revisg.htm)

<http://www.c4vct.com/kym/humor/revisg.htm>

Used with permission

FUNNY BONE THE FIRST

There once was a Russian czar named Rudolph the Great. One Christmas Eve he was walking in the palace with his wife when he happened to look out the window and remark, "Look, Catherine. It's raining."

She, being as obstinate and strong-willed as he, responded, "I don't think so, Rudolph. I think it's snowing."

Rudolph was so sure he was right he challenged his wife: "Let's step outside and find out, shall we?"

They stepped outside to discover that, lo and behold, it was, in fact, raining. Trying not to gloat, the czar turned to his wife and said, "You see? Rudolph the Red knows rain, dear!"

Source: www.walkthroughlife.com

<http://www.walkthroughlife.com/Holidays/christmas/holidayhumor.htm>

DID YOU KNOW . . .

. . . fruitcake has been around since the Romans? It was made with raisins, pine nuts, pomegranate seeds and barley mash. Explains a lot, doesn't it?

Source: [www.christmas.allday.at](http://users3.ev1.net/~hwillcox/trivia.html)

<http://users3.ev1.net/~hwillcox/trivia.html>

TRANSPOSITIONS

The *SPread Sheet* has been publishing for nearly a year now, and there are few forthcoming format changes of which we'd like to make you aware:

- The mission of the *SPread Sheet* is "to educate, inform, entertain, and inspire." With that in mind, you can look for more future articles about being an SP, how to improve your already considerable skills, and other such resources.
- Starting in March 2006, the *SPread Sheet* will no longer be distributed electronically; the content has outgrown the format. Rather, an electronic notice containing a link will be sent indicating that the quarterly issue has been posted on the webpage, and you will be able to access it from there as a pdf file. SP's and Recruits without access to e-mail and/or the Internet will continue to receive the *SPread Sheet* through the mail as usual.
- We're changing the title of the **FEEDBACK** column to **RESPONSES**, but not the content. Please continue to send your comments about how we can make the *SPread Sheet* better, what sort of features you would like to see, let us know which ones you like (or which ones you don't!) or even just to tell us what a great job you think we're doing.

RESPONSES

Reader response on the third issue of the *SPread Sheet*:

“Webster’s Abridged Medical Dictionary was great.” - Ingrid Toews, Communication Skills Curriculum Facilitator

“Another amazing job . . . WAY TO GO!”
- Linda Washington, SP

“Love your definitions!”
- Kevin Phelps, SP

“That was hilarious! Loved it!”
- Claire Thomas, SP

“A pleasure to read!”
- Pat Kolody, CAPE Coordinator

Please let us know what YOU think. If you have any questions, comments, concerns, suggestions, or feedback on this issue - positive or negative - we want to hear from you. E-mail us at [reSPponses](#) and you may see your response here!

UPCOMING SESSIONS

Neurology: January 12, 19
February 2, 9, 16
March 23

CAPE Exam: January 21

OT Practical Exam: January 27

CCE: February 4, 5, 11

PT Sessions: February 7, 9, 10, 20

Clinical Interviewing - Abuse & Neglect:
February 17, 24

CAPE Exam: February 18

Clinical Interviewing - Information Sharing:
March 7

NB: This listing is for informational purposes only. If you are required for a role, you will be directly contacted by an SP Coordinator. Please do not e-mail or phone the SP office regarding your availability.

THAT’S WHAT I SAID, BUT NOT WHAT I MEANT!

If there was ever any doubt as to the importance of SP’s helping medical students and practicing physicians learn to communicate effectively, the following medical chart bloopers make the case. These statements were actually written by various health care professionals on patients’ charts, found in a review of medical records at several major hospitals. Thank goodness for SP’s and communication sessions! - otherwise medical practitioners and students alike could fall prey to:

Stating the Obvious

“Skin: somewhat pale but present.”

“The patient was in his usual state of good health until his airplane ran out of gas and crashed.”

“She is numb from her toes down.”

“The patient has no previous history of suicides.”

The Patently Impossible

“She was treated with oral suppositories.”

“The left leg became numb at times and she walked it off.”

“On the second day the knee was better and on the third day it had completely disappeared.”

“Father died in his 90’s of female trouble in his prostate and kidneys.”

“Speculum was inserted between the eyes.”

“Large brown stool ambulating in the hall.”

“Patient was well until the development of a superficial right arm, which resolved.”

“Rectal exam revealed a normal size thyroid.”

“Bleeding started in the rectal area and continued all the way to Los Angeles.”

(continued on page 4)

THAT'S WHAT I SAID, BUT NOT WHAT I MEANT! (continued from page 3)

Innocuous Innuendoes

“Patient stated that if she would lie down, within two or three minutes something would come across her abdomen and knock her up.”

“At the time of onset of pregnancy the mother was undergoing bronchoscopy.”

“The pelvic examination will be done later on the floor.”

“While in the emergency room, she was examined, X-rated and sent home.”

“The lab test indicated abnormal lover function.”

“Exam of genitalia was completely negative except for the right foot.”

“Dr. **** is watching his prostate.”

“Both breasts are equal and reactive to light and accommodation.”

“Exam of genitalia reveals that he is circus sized.”

“She has no rigors or shaking chills, but her husband states she was very hot in bed last night.”

Unintentional Insults

“Patient has two teenage children but no other abnormalities.”

“She stated that she had been constipated for most of her life until 1989 when she got a divorce.”

“The patient was to have a bowel resection. However he took a job as a stockbroker instead.”

“Coming from Detroit, this man has no children.”

“Complications: medical student present.”

“Both the patient and the nurse herself reported passing flatus.”

“The patient has been depressed since she began seeing me in 1993.”

Outright Contradictions

“Patient's medical history has been remarkably insignificant with only a 40 pound weight gain in the past three days.”

“The skin was moist and dry.”

“Occasional, constant, infrequent headaches.”

“Patient was alert and unresponsive.”

“Healthy-appearing decrepit 69 year-old male, mentally alert but forgetful.”

“By the time she was admitted to the hospital her rapid heart had stopped and she was feeling much better.”

The Distressingly Absurd

“Patient was seen in consultation by Dr. ****, who felt we should sit on the abdomen and I agree.”

“The patient lives at home with his mother, father, and pet turtle, who is presently enrolled in day care three times a week.”

“Patient has left white blood cells at another hospital.”

“The patient had waffles for breakfast and anorexia for lunch.”

“When she fainted, her eyes rolled around the room.”

“Patient has chest pain if she lies on her left side for over a year.”

“Vital signs stable. Urine input and output are fine.”

“If he squeezes the back of his neck for 4 or 5 years it comes and goes.”

“Nodule found on fiscal exam.”

“The baby was delivered, the cord clamped and cut and handed to the pediatrician, who breathed and cried immediately.”

“I saw your patient today, who is still under our car for physical therapy.”

Patients Standing Up For Themselves

“Discharge status: alive but without my permission.”

“ENT attempted removal of patient's cerebrum, but the patient did not tolerate the procedure.”

“The patient refused autopsy.”

Source: www.ButlerWebs.com
http://www.ButlerWebs.comhttp://www.canadiancontent.net/en/jd/go?Url=http://www.med-psych.net/links/Medical_Humor-Jokes_and_Cartoons
 Used with permission

STAYING PROFESSIONAL

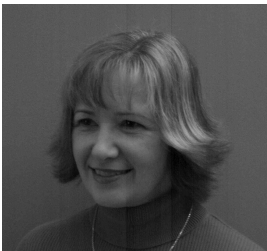
FEEDBACK A TO I

Feedback in clinical medical education is necessary, valuable, and not as difficult as it might seem at first. Take a moment to review these helpful hints before your next session:

- Align yourself with the student and the preceptor; you share common goals.
- Bind your feedback to the allotted time.
- Concentrate on the facts; use specific examples to illustrate your points.
- Don't overwhelm the student with too much information.
- Exclude behaviours that are not within the student's ability to change.
- Formulate your responses in descriptive, non-evaluative language.
- Get rid of generalizations, and deal with specific performances.
- Have your subjective opinions labeled as such.
- Interpret decisions and actions, rather than assumed intentions.

Adapted from "Feedback in Clinical Medical Education", Jack Ende, MD. JAMA, August 12, Volume 250, No. 6

SPOTLIGHT ON . . .



Eunice Friesen began her new duties as Director of the Standardized Patient Program on September 1st of this year. She learned of the position through her professional contacts in the Medical Journal Club, and welcomed the "opportunity to be involved in the education of other members of the health care team."

Currently, Eunice's main responsibilities revolve around developing policies and procedure for everything from training to evaluation to budgeting. Some of her long-term plans include developing stronger inter-professional health education links between the SP Program and the U of M itself, the WRHA and the health community at large, as well as guiding the SP Program into becoming an economic contributor to the Faculty of Medicine.

Eunice earned her Bachelor of Nursing from the University of Manitoba in 1978 and is currently in the thesis stage of a Master's of Education. In her career, Eunice has had the opportunity to work in almost every field of both facility-based and community nursing - with the exception of O.R. In

fact, within the first three weeks of working as a nursing educator, she had the opportunity to participate in the LPN graduation ceremony of a student nurse that she had delivered as an infant while working her first job in obstetrics!

Having worked as a nursing educator for the past seven years, Eunice describes health education as a "dream job," bringing a great deal of passion and enthusiasm to the SP Program. The best part of the job so far she finds is "all of the great people!" Her secret for sustaining all of that energy? A positive attitude . . . and coffee!

Her husband of twenty-seven (27) years is an elementary school teacher, and they tend to spend their spare time constructively: while her husband builds an airplane in the garage, Eunice tends her many flower gardens. They reside in Kleefeld (a terrific commute during winter snowstorms) with their three (3) adult sons and Rascal the Peekapoo.

Eunice also works ten to twelve shifts a year in her local E.R. to keep up her clinical skills, in addition to her duties with the Standardized Patient Program.

FUNNY BONE THE SECOND

A man went to his dentist for a regular check-up. The dentist took one look and exclaimed, "Good Heavens! That plate I installed in your mouth about six months ago is completely corroded! What on earth have you been eating?"

"Well," says the man, "the only thing I can think of is this: my wife made me some asparagus about four months ago with this stuff on it - Hollandaise sauce, she called it - and doctor, I'm talkin' DELICIOUS! I've never tasted anything like it, and ever since then I've been putting it on everything - meat, fish, toast, vegetables - you name it!"

"That's probably it," replied the dentist. "Hollandaise sauce is made with lemon juice, which is acidic and highly corrosive. I'll have to install a new plate, but made out of chrome this time."

"Why chrome?" the man asked.

The dentist shrugged and said, "Everyone knows there's no plate like chrome for the Hollandaise!"

Source: www.walkthroughlife.com

<http://www.walkthroughlife.com/Holidays/christmas/holidayhumor.htm>

BY THE WAY

- SP Coordinator **Jodi Binnun** has resigned from the SP Program. We wish her continued success in all her future endeavours. Jodi's duties will be fulfilled by Coordinators **Lezlie Brooks** and **Tim Webster** for the remainder of the academic year.
- **Karen Depape** will be providing administrative assistance for the SP Program starting January 9, 2006. You can reach her at 789-3829 or at depapek@ms.umanitoba.ca
- SP's **Bob** and **Linda Washington** are moving to be with family in B.C. Our loss is the UBC's gain, as they will continue to do what they do so well for the SP Program in Vancouver. You can stay in touch with them by mailing:

*P5 - 7361 Halifax Street
Burnaby, BC V5A 4H3*
- Watch for SP **Claire Thomas** in a 10-second ad (possibly on Thursdays during "Survivor" or "The Apprentice") or on billboards in St. Vital Shopping Centre's upcoming ad campaign - and please don't get her a Thighmaster™ for Christmas.
- SP **Alf Kollinger** spent the last few months working daily for the television series "Falcon Beach" as a stand-in.

DID YOU KNOW . . .

. . . that more conceptions occur during December than any other month? Ho ho ho!

Source: [The Negapage](http://www.c4vct.com/kym/humor/snopes.htm)

<http://www.c4vct.com/kym/humor/snopes.htm>

Used with permission

INSIGNIA, PLEASE

The Standardized Patient Program is sponsoring a Logo Contest! All SP's are invited to submit entries and will be able to vote on the final choice.

The winning entry will appear on subsequent issues of the *SPread Sheet* and be featured on our webpage; the designer will receive a "Night On The Town" package, including accommodations at the Fort Garry Hotel, brunch for two, and entertainment.

Submissions may be e-mailed to:

friesen2@cc.umanitoba.ca

. . . but must have a resolution of 300 d.p.i. or higher.

Submissions may also be mailed to:

SP Logo Contest

T151A - 770 Bannatyne Avenue

Winnipeg, MB R3E 0W3

No faxes, please! We're looking forward to receiving those entries - good luck!

EVENT LISTINGS

Thursday Nights - Karaoke

SP **Jacqui Fox** is your host at the Cork & Dock (1700 Pembina Highway), 9PM -1AM. For bookings and information, go to: www.singersparadise.ca

December 23 & 24, 2005 - Christmas Eve Service

SP **Daniel Savchuk** performs as "Herod the Great" at The Meeting Place (139 Smith Street), 6 - 7:45PM. Admission is free.

February 9 - March 4, 2006 - The Innocent Eye Test

SP **Keith James** performs as "Martino Kasselback" in the world premiere of Michael Healey's new play at the MTC Mainstage. Tickets available at the MTC Box Office (174 Market Avenue) or by calling 942-6537 or toll-free: 1-877-446-4500. Reduced Price preview: February 8th.

February 10, 2006 - Long Lost Love

SP **Steve Pennicook** and Coordinator **Tim Webster** perform improvisational comedy with the Crosseyed Rascals at PTE's Colin Jackson Studio (3rd floor, Portage Place) at 8PM. Tickets are \$8, \$6 in advance. For more information, go to www.crosseyed.ca or call 669-4404.

To advertise your event in the next *SPread Sheet*, please forward the pertinent information either by:

Fax: 977-568 —or— **post: SPread Sheet Event Listings**
T151B - 770 Bannatyne Avenue
Winnipeg, MB R3E 0W3

. . . no later than **February 28**. No phone calls, please. We will accept information about any and all events that occur *between March 16 and June 16*. Listings are free, but placement cannot be guaranteed.

SUBMISSIONS

The *SPread Sheet* is *your* newsletter; if you'd like to contribute any articles, opinions, thoughts, trivia, anecdotes, pictures, or jokes for the next issue, please do so either by:

Fax: 977-568 —or— **post: SPread Sheet Submissions**
T151B - 770 Bannatyne Avenue
Winnipeg, MB R3E 0W3

. . . no later than **February**. We do, however, reserve the right to edit any and all submissions for length and content. Submissions that are not included in one issue may be included in the next.

FUNNY BONE THE THIRD (contributed by Eunice Friesen)

A group of chess enthusiasts checked into a hotel and met in the lobby where they began discussing and bragging about their recent victories in chess tournaments. After an hour of this, the hotel manager couldn't take it anymore. He stormed out of his office and ordered them to disperse.

As the guests shuffled away, the desk clerk asked the manager why he had been so abrupt. The hotel manager explained: "I can't stand chess nuts boasting in an open foyer!"

Source: [Puns for Intellectuals](http://www.punsforintellectuals.com)

http://www.lighthousekeepers.com/cgi-bin/forumscgi/ultimatebb.cgi?ubb=get_topic;f=10;t=001006;p=