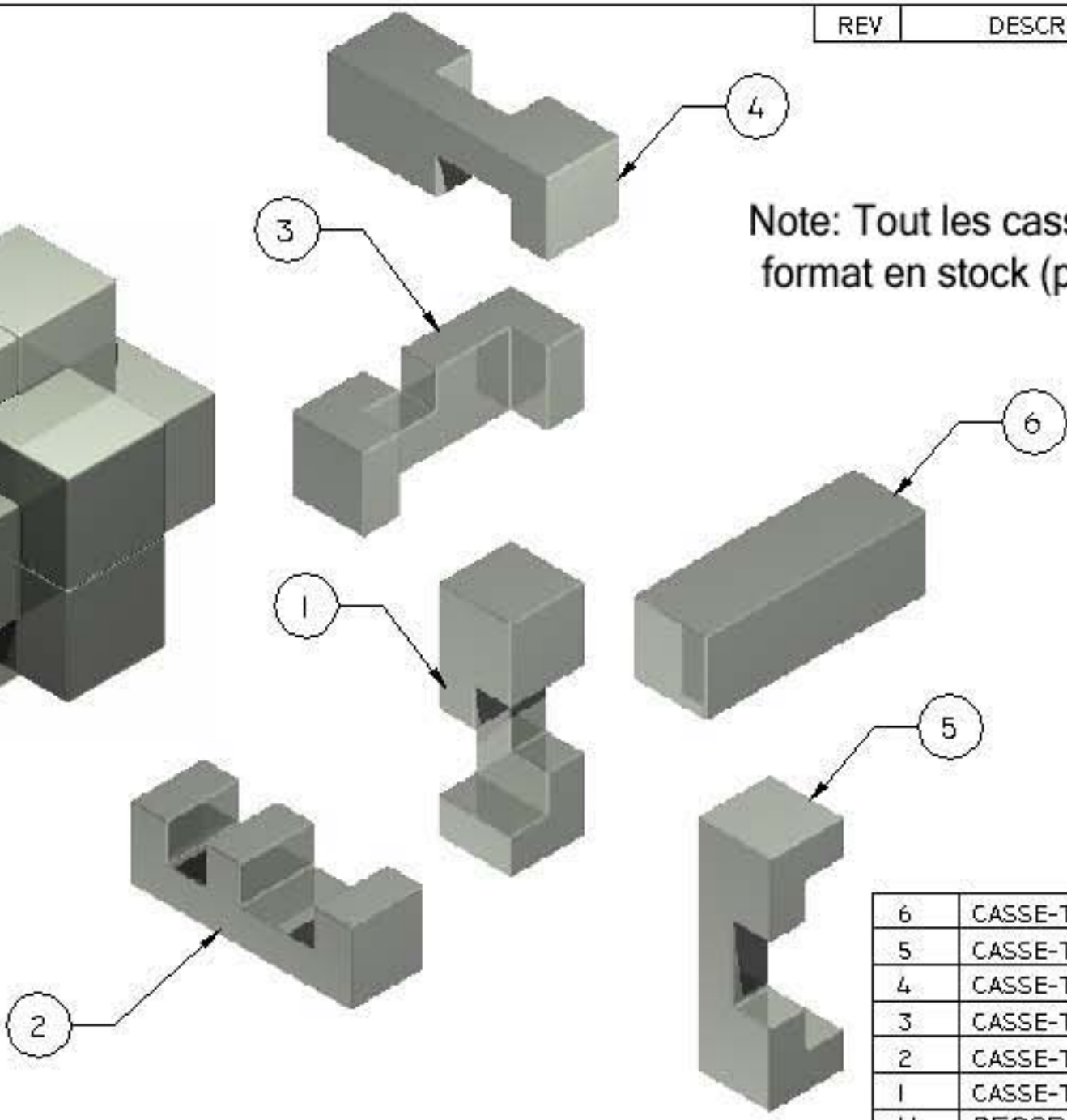
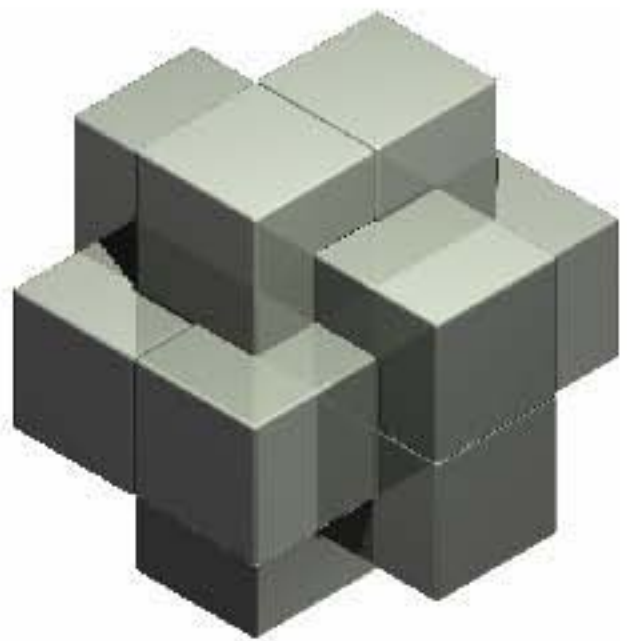


REV	DESCRIPTION	DATE
-----	-------------	------



Note: Tout les casse-tête seront en format en stock (profil seulement)

6	CASSE-TÊTE PIÈCE 6	1
5	CASSE-TÊTE PIÈCE 5	1
4	CASSE-TÊTE PIÈCE 4	1
3	CASSE-TÊTE PIÈCE 3	1
2	CASSE-TÊTE PIÈCE 2	1
1	CASSE-TÊTE PIÈCE 1	1
No.	DESCRIPTION	QTY.



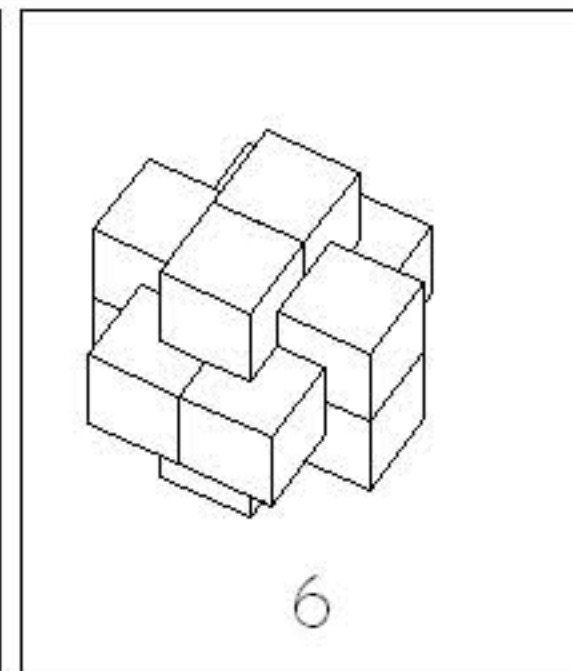
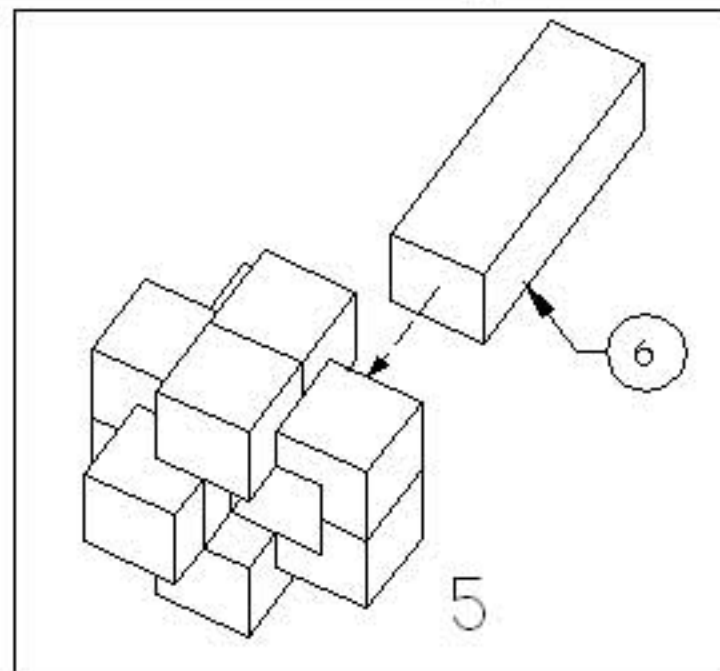
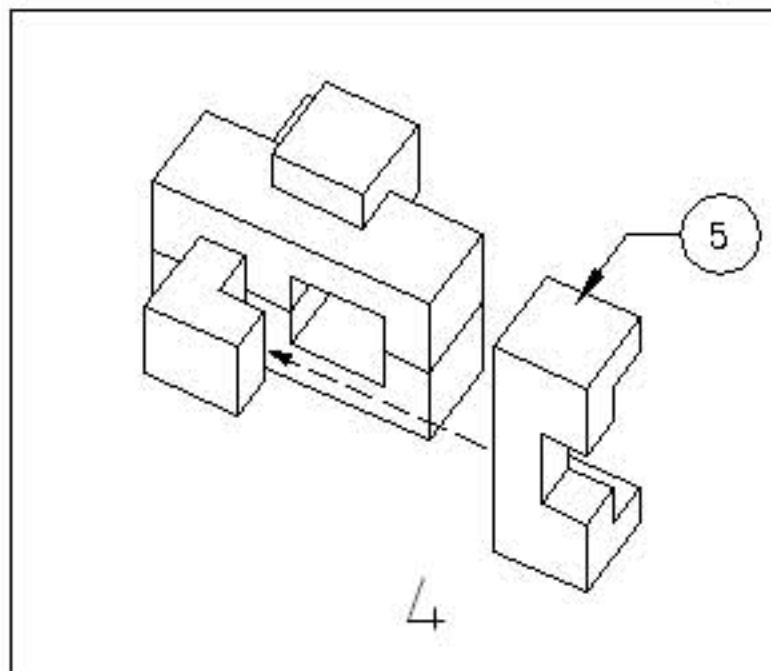
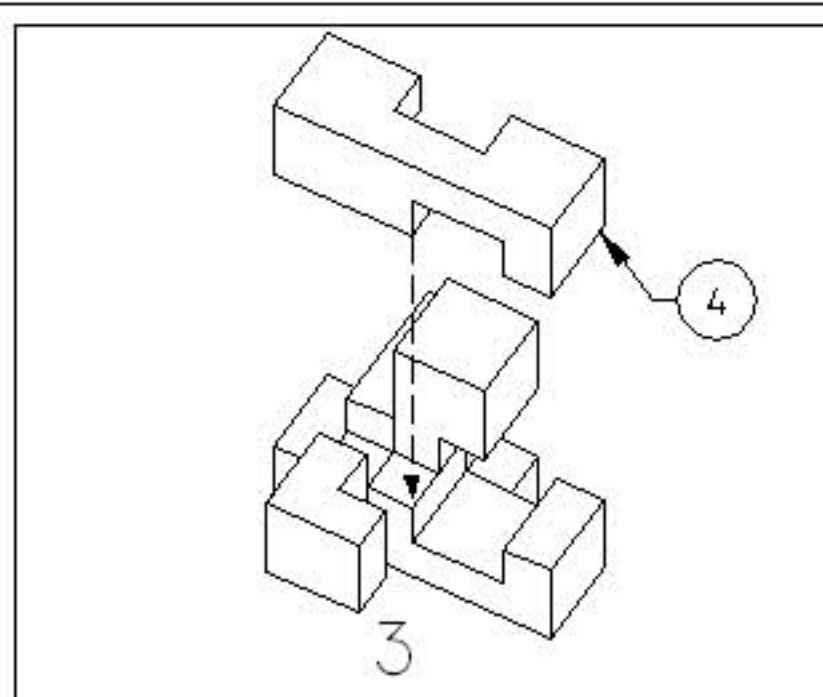
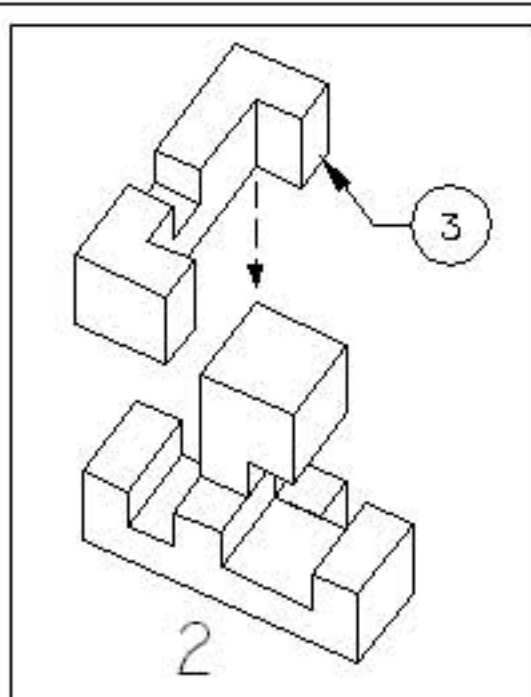
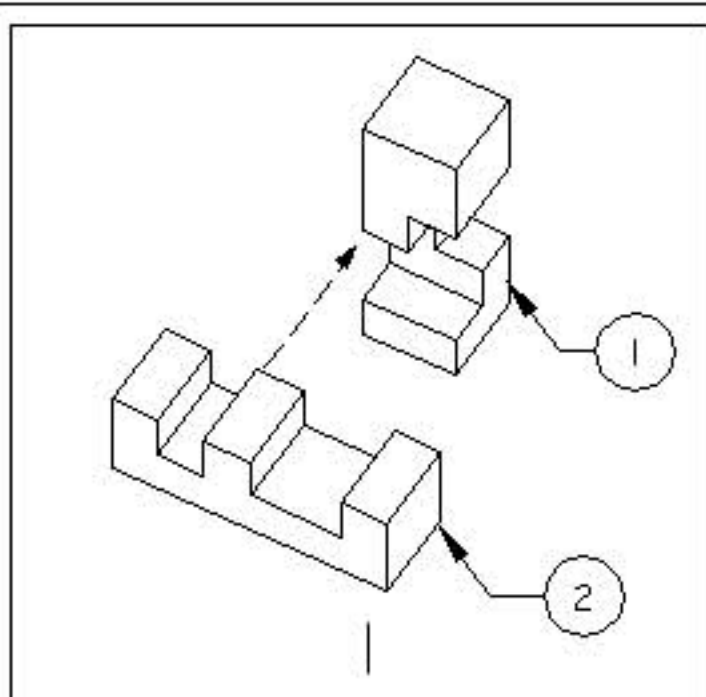
TOLERANCES
EXCEPT AS NOTED
.XX = ±.01
.XXX = ±.002
.XXXX = ±.0005
ANGLES = ±0°30'

HEAT TREATMENT:
NONE
MATERIAL:
6061 AL.
FINISH:
NONE

TITLE:
ASSEMBLAGE
DRAWN BY:
C.L.
CHECKED BY:
W.P., P. B. & P.A.R.

REQ:
1
DATE:
MAR 2, 2007
SCALE:
N.T.S.

PART NUMBER:
PZ1001
SIZE:
A
SHEET NO.:
1 OF 8



TOLERANCES
EXCEPT AS NOTED

.XX = ±.01
.XXX = ±.002
.XXXX = ±.0005
ANGLES = ±0°30'

HEAT TREATMENT:
NONE

MATERIAL:
6061 AL.
FINISH:
NONE

TITLE:

SOLUTION

DRAWN BY:
C. L.

CHECKED BY:
W.P., P. B., & P.A.R.

REQ:

1

DATE:
MAR 2, 2007

SCALE:
N.T.S.

PART NUMBER:

PZI002

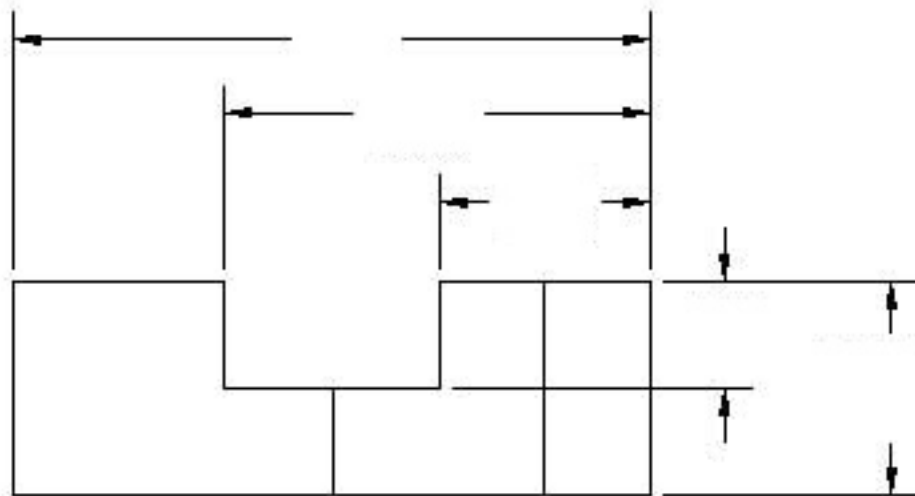
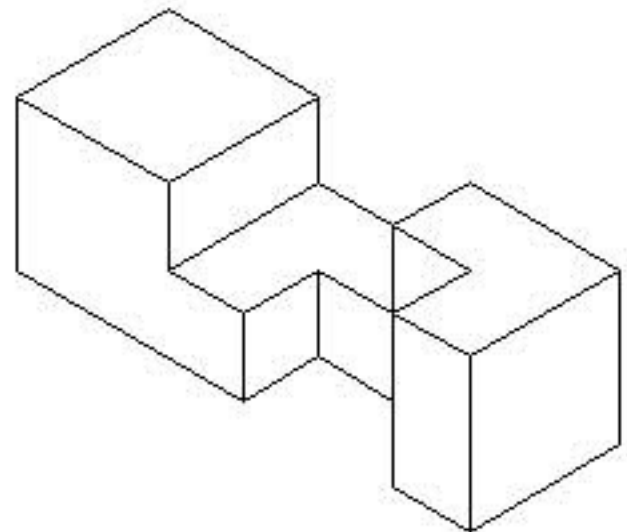
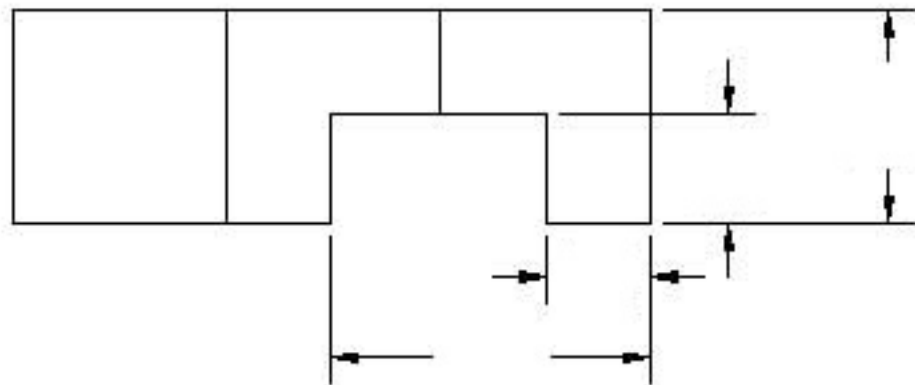
SIZE:

A

SHEET NO.

20F8

REV	DESCRIPTION	DATE
-----	-------------	------



TOLERANCES
EXCEPT AS NOTED

.XX = ±.01
.XXX = ±.002
.XXXX = ±.0005
ANGLES = ±0°30'

HEAT TREATMENT:
NONE

MATERIAL:
6061 AL.

FINISH:
NONE

TITLE: PIÈCE DU CASSE-TÊTE I

DRAWN BY:
C. L.

CHECKED BY:
W.P., P. B., & P.A.R.

REV:
1

DATE:
MAR 2, 2007

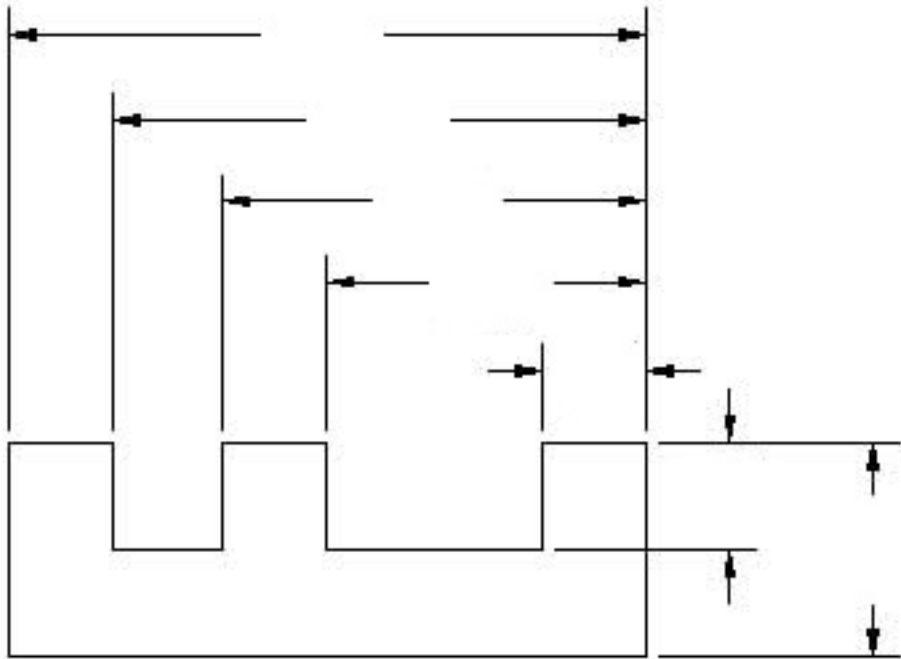
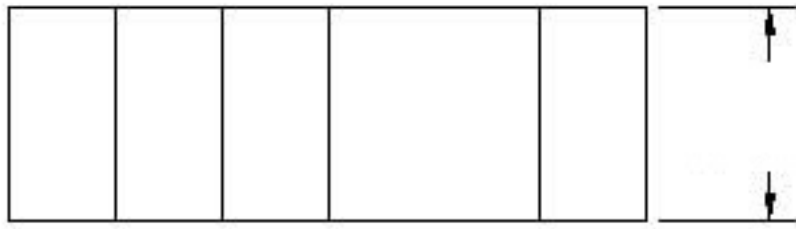
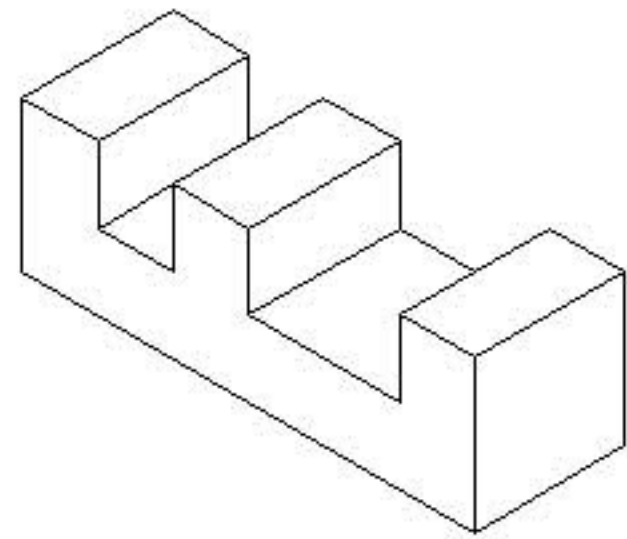
SCALE:
1:1

PART NUMBER:
PZI003

SIZE:
A

SHEET NO.
30F8

REV	DESCRIPTION	DATE
-----	-------------	------



TOLERANCES
EXCEPT AS NOTED

.XX = ±.01
.XXX = ±.002
.XXXX = ±.0005
ANGLES = ±0°30'

HEAT TREATMENT:
NONE

MATERIAL:
6061 AL.

FINISH:
NONE

TITLE: PIÈCE DU CASSE-TÊTE 2

DRAWN BY:
C.L.

CHECKED BY:
W.P., P. B., & P.A.R.

REV:
1

DATE:
MAR 2, 2007

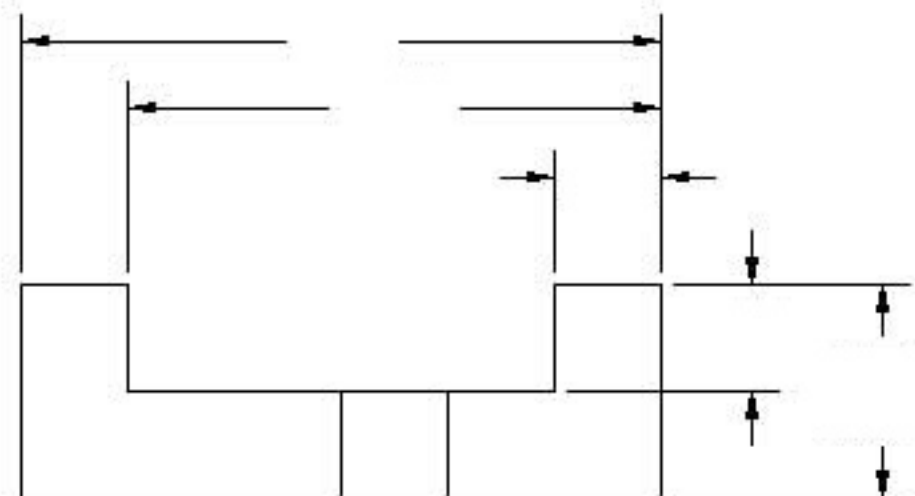
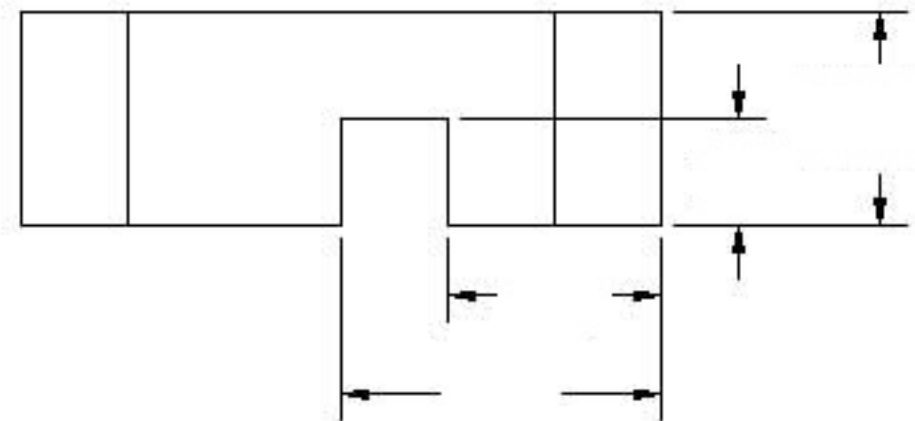
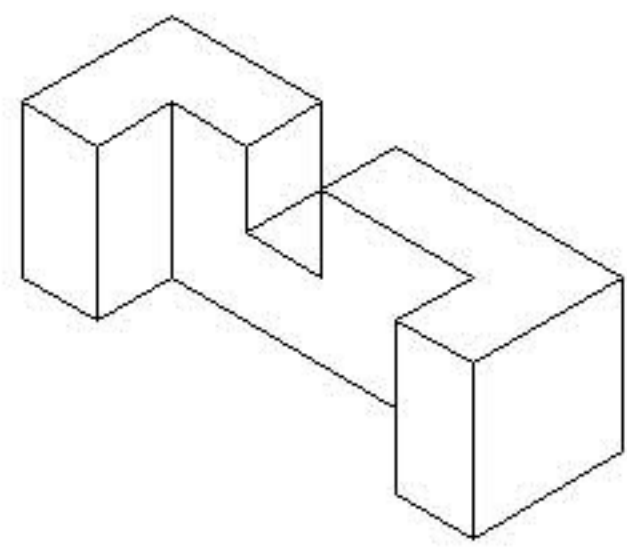
SCALE:
1:1

PART NUMBER:
PZI004

SIZE:
A

SHEET NO.
40F8

REV	DESCRIPTION	DATE
-----	-------------	------



TOLERANCES
EXCEPT AS NOTED
.XX = ±.01
.XXX = ±.002
.XXXX = ±.0005
ANGLES = ±0°30'

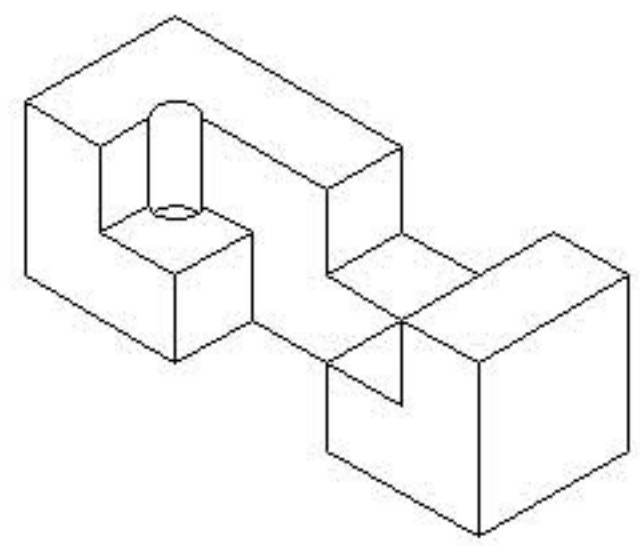
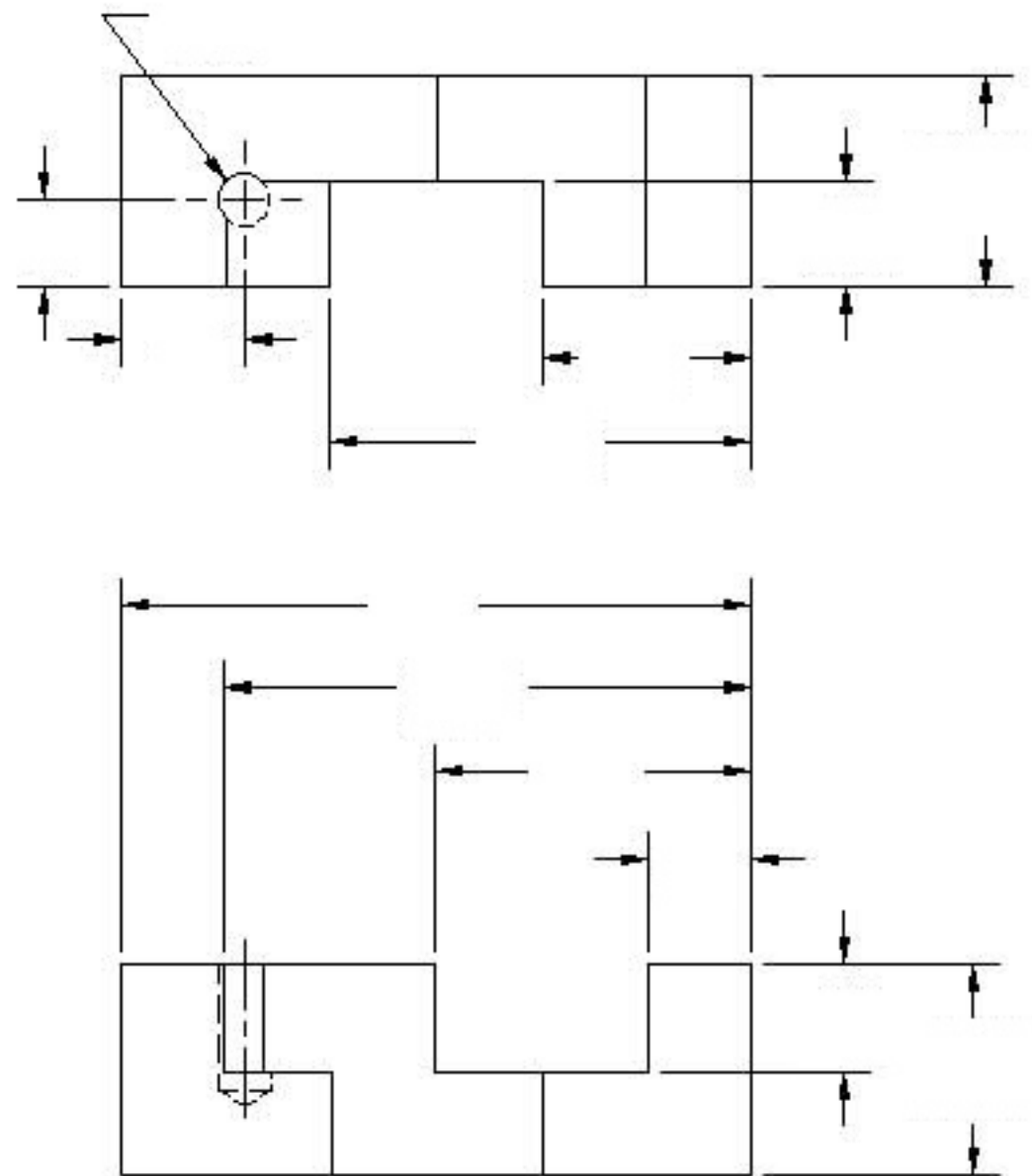
HEAT TREATMENT:
NONE
MATERIAL:
6061 AL.
FINISH:
NONE

TITLE: PIÈCE DU CASSE-TÊTE 3
DRAWN BY:
C.L.
CHECKED BY:
W.P., P. B., & P.A.R.

REQ:
1
DATE:
MAR 2, 2007
SCALE:
1:1

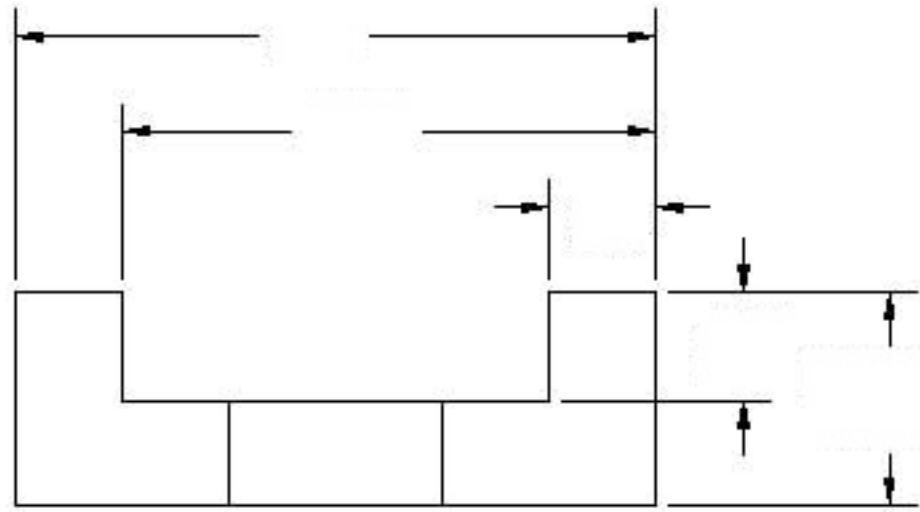
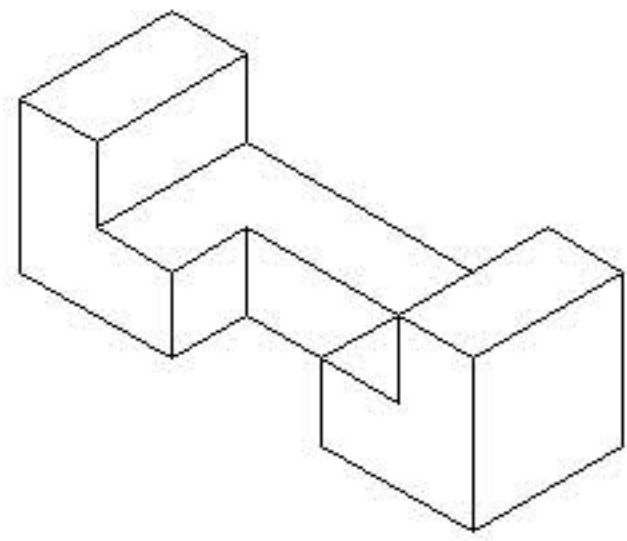
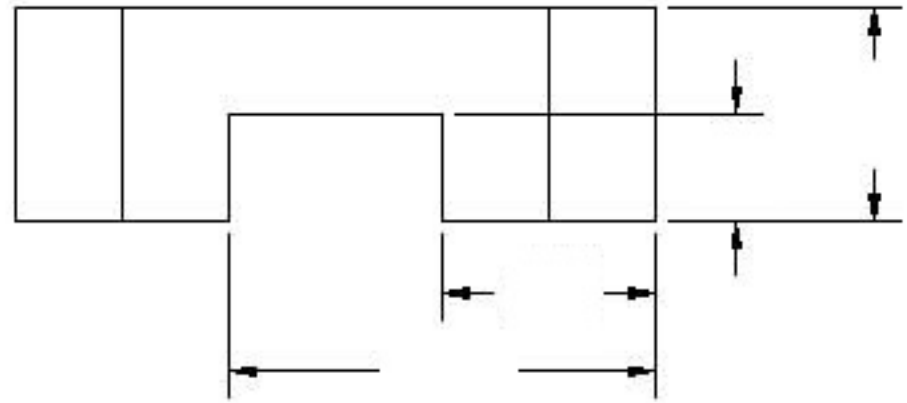
PART NUMBER:
PZ1005
SIZE:
A
SHEET NO.
50F8

REV	DESCRIPTION	DATE
-----	-------------	------



TOLERANCES EXCEPT AS NOTED .XX = ±.01 .XXX = ±.002 .XXXX = ±.0005 ANGLES = ±0°30'	HEAT TREATMENT: NONE	TITLE: PIÈCE DU CASSE-TÊTE 4	REV: 1	PART NUMBER: PZI006
	MATERIAL: 6061 AL.	DRAWN BY: C.L.	DATE: MAR 2, 2007	SIZE: A
FINISH: NONE	CHECKED BY: W.P., P. B., & P.A.R.	SCALE: 1:1	SHEET NO. 60F8	

REV	DESCRIPTION	DATE
-----	-------------	------



TOLERANCES
 EXCEPT AS NOTED
 .XX = ±.01
 .XXX = ±.002
 .XXXX = ±.0005
 ANGLES = ±0°30'

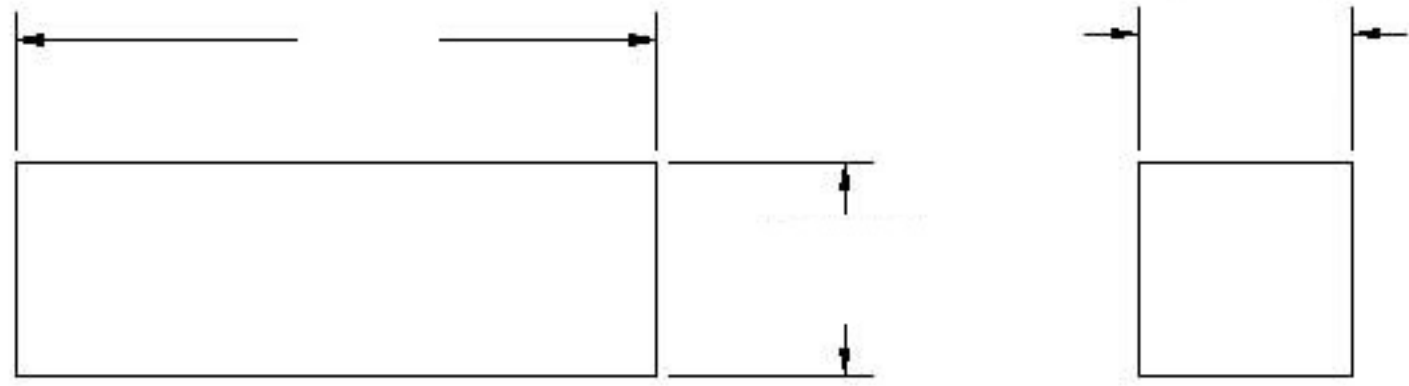
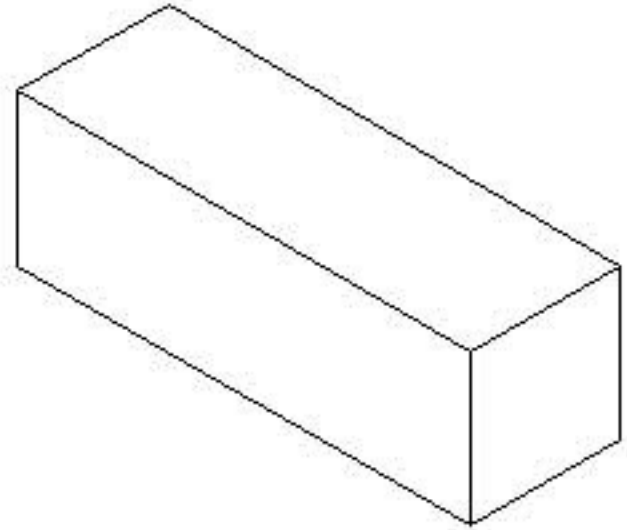
HEAT TREATMENT:
 NONE
 MATERIAL:
 6061 AL.
 FINISH:
 NONE


TITLE: PIÈCE DU CASSE-TÊTE 5
 DRAWN BY:
 C.L.
 CHECKED BY:
 W.P., P. B., & P.A.R.

REQ:
 1
 DATE:
 MAR 2, 2007
 SCALE:
 1:1

PART NUMBER:
 PZI007
 SIZE:
 A
 SHEET NO.
 7 OF 8

REV	DESCRIPTION	DATE
-----	-------------	------



 SKILLS COMPÉTENCES CANADA SASKATCHEWAN COMPÉTITION NATIONAL TECHNIQUE D'USINAGE	TOLERANCES EXCEPT AS NOTED .XX = ±.01 .XXX = ±.002 .XXXX = ±.0005 ANGLES = ±0°30'	HEAT TREATMENT: NONE MATERIAL: 6061 AL. FINISH: NONE	TITLE: PIÈCE DU CASSE-TÊTE 6 DRAWN BY: C.L. CHECKED BY: W.P., P. B., & P.A.R.	REQ: 1 DATE: MAR 2, 2007 SCALE: 1:1	PART NUMBER: PZI008 SIZE: A SHEET NO.: 80F8
--	--	---	---	--	--