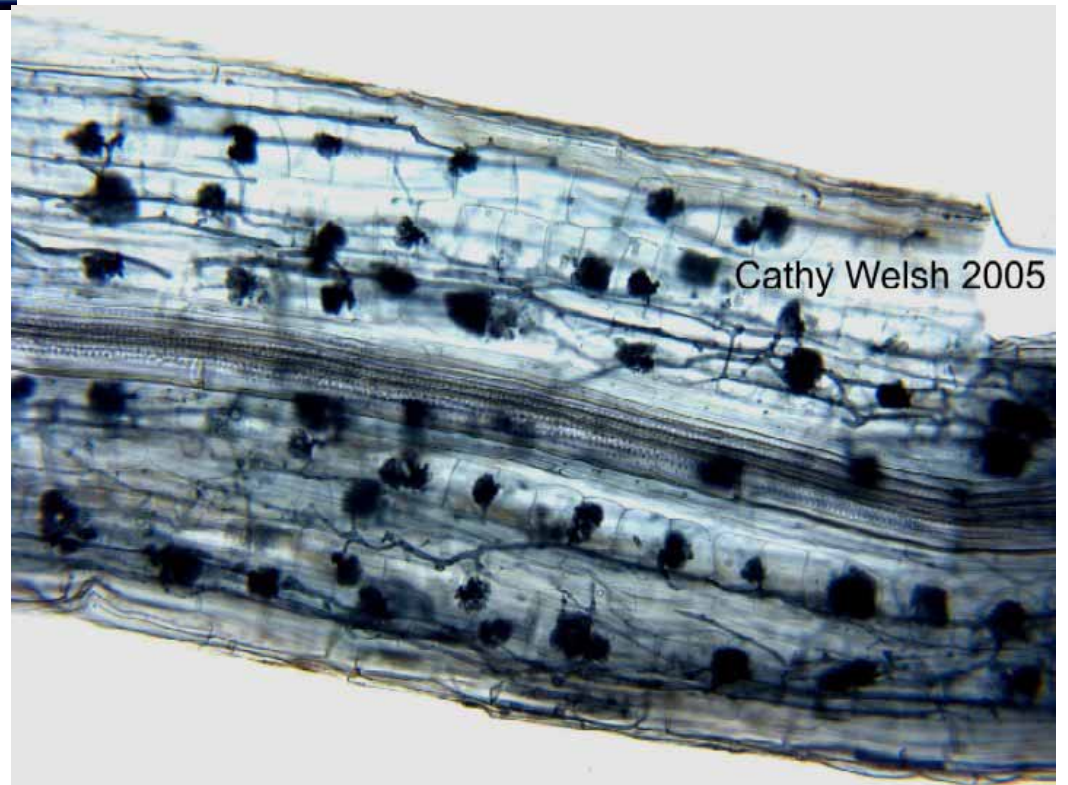
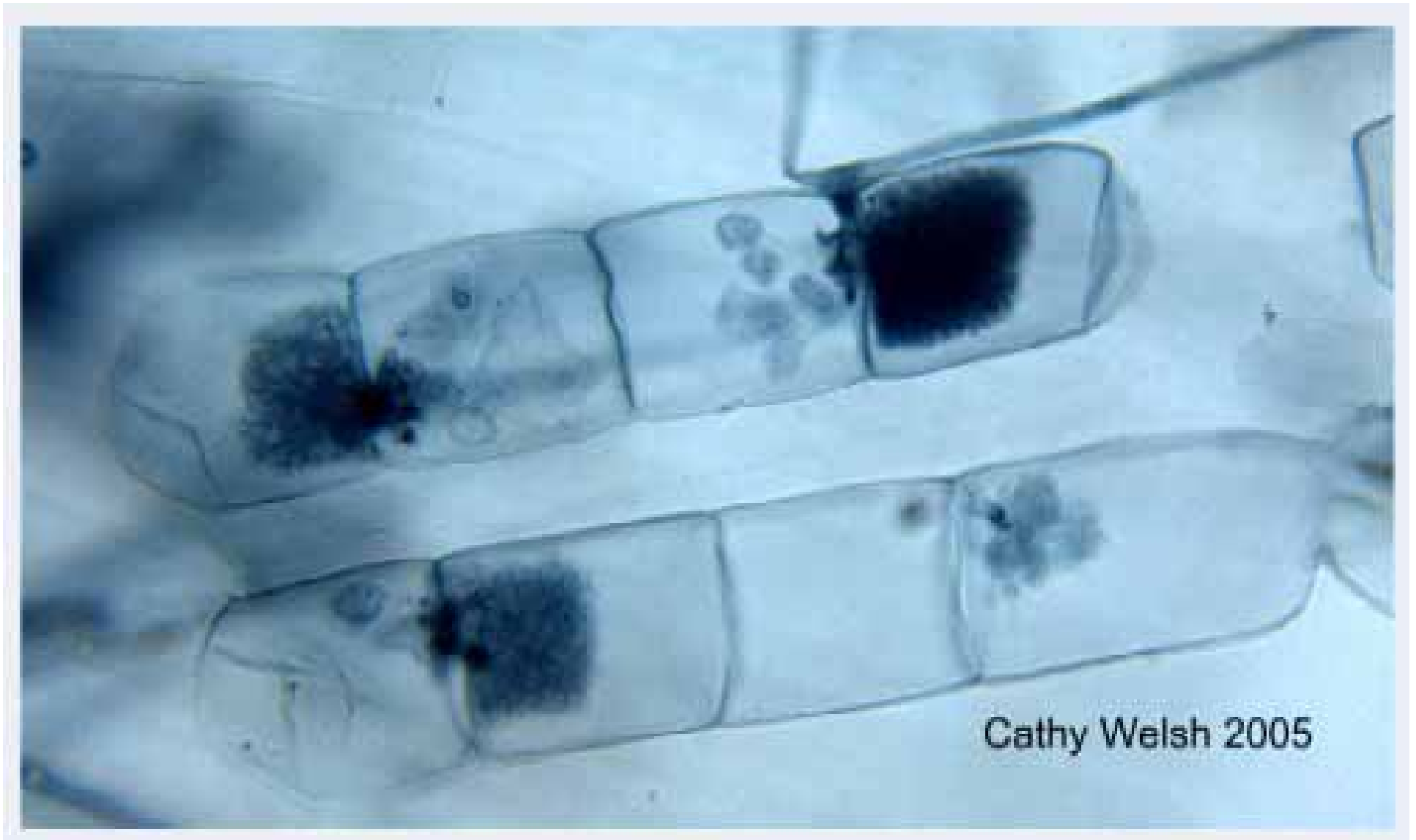


Cathy Welsh 2005

Arbuscules and Hyphae in Flax Roots



Cathy Welsh 2005

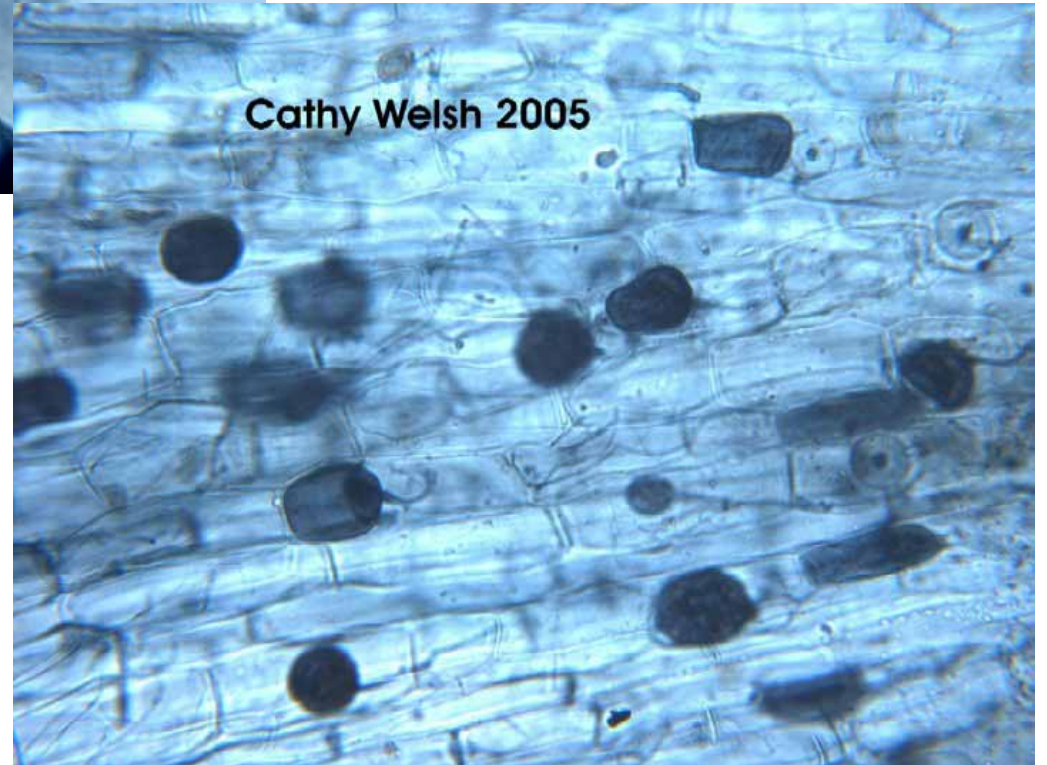


Paired Arbuscules in Flax Root Cortical Cells,
note limited development of one arbuscule in each pair



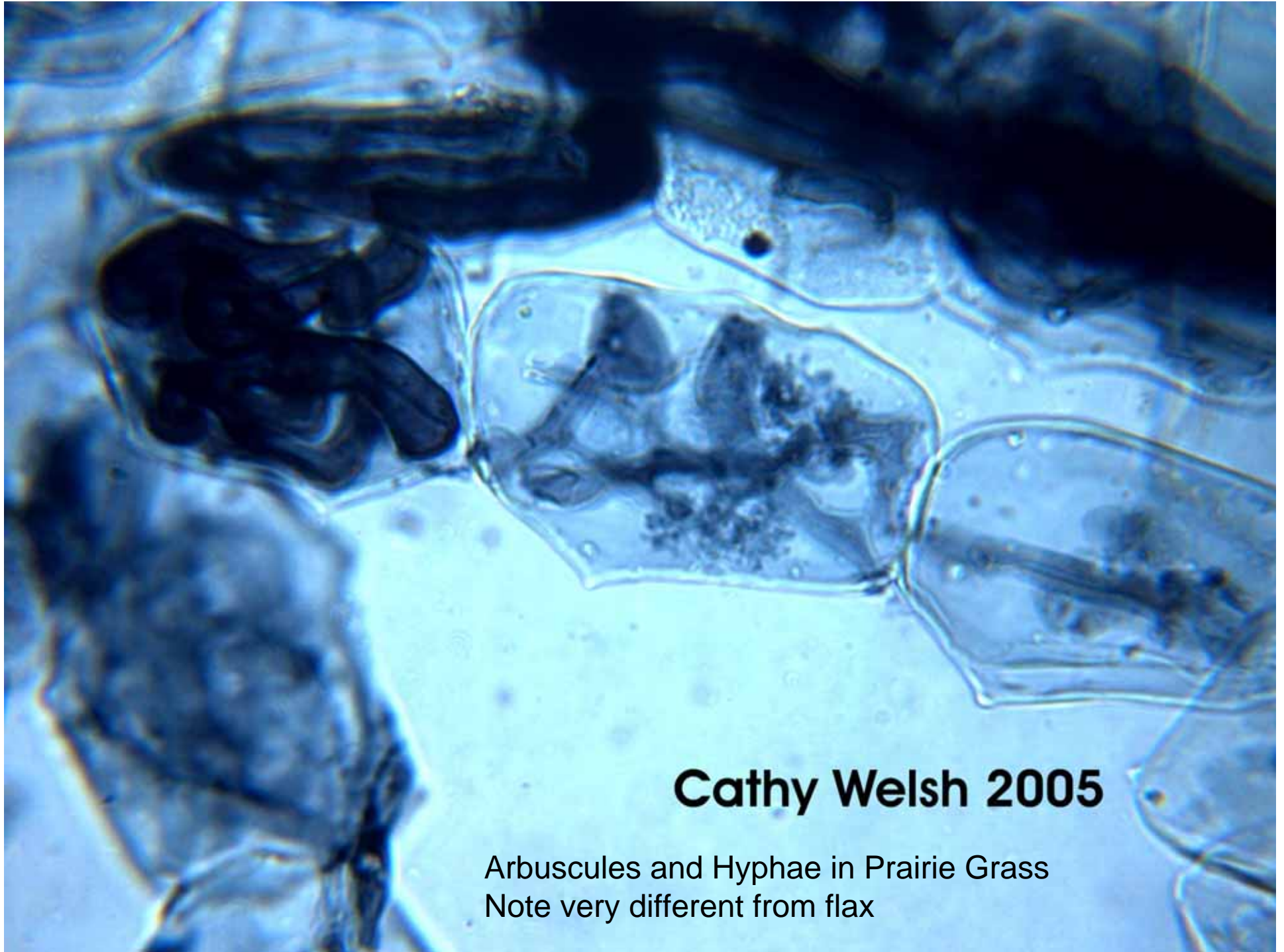
Cathy Welsh 2005

Not all arbuscules are created equal in Flax



Cathy Welsh 2005

Spores and Vesicles in Flax



Cathy Welsh 2005

Arbuscules and Hyphae in Prairie Grass
Note very different from flax



“I will win and obtain a sample” –
Cathy sampling in the Red River’s finest
gumbo clay at the Glenlea Long-term Crop
Rotation and Management Study

Soleil adjusting the shades to prevent
too much sun – weird –she is also
sampling Black Medic annual seeded plots
at AAFC Indian Head





Annual Cropped Conventional Flax

Annual Cropped Organic Flax





Alfalfa Rotated Conventional Flax

Alfalfa Rotated Organic Flax







Tulip planter to obtain flax roots
in a defined soil volume

Flax swathed at harvest



Soil extracts for phosphorus
from the Long-term Crop
Rotation and Management Trial



2014
ECOLOGK
RM 312 Burton