

**UNIVERSITY
OF MANITOBA**

PHYSICAL PLANT - 89 FREEDMAN CR
609 - LEVEL 100 AREA
October 4, 2016

**ARCHITECTURAL
ENGINEERING
SERVICES**
 Physical Plant Department
 89 Freedman Crescent Winnipeg, MB

SPACE INVENTORY

ROOM NUMBER	ROOM NAME	DESCRIPTION	LENGTH (ft)	WIDTH (ft)	AREA (sq ft)	LENGTH (m)	WIDTH (m)	AREA (sq m)
	BUILDING		194	201.22	23217	59.13	61.33	2156.93
100	OFFICE	OPEN OFFICE	9.63	15.35	134	2.94	4.68	12.45
100C	CORRIDOR		4.78	4.2	201	1.46	12.8	18.67
100M	CORRIDOR	VESTIBULE	11.17	8.95	3.4	3.4	2.73	9.29
100cor	CORRIDOR	RECEPTION	21	39.41	433	6.4	12.01	40.23
101	OFFICE		13.94	22.02	300	4.25	6.71	27.87
102	OFFICE		12.8	13.97	179	3.9	4.26	16.63
103	OFFICE		8.84	13.97	123	2.69	4.26	11.43
104	OFFICE		8.57	13.97	120	2.61	4.26	11.15
105	OFFICE		8.75	13.97	122	2.67	4.26	11.33
106	OFFICE		8.69	13.97	112	2.65	4.26	10.41
107	STORAGE		12.72	8.05	91	3.88	2.45	8.45
107A	MECH/ELECT		11.3	6.83	77	3.44	2.08	7.15
107M	MECH/ELECT	ELECTRICAL TELEPHONE	8.21	15.51	127	2.5	4.73	11.8
108	OFFICE		10.44	14.34	141	3.18	4.37	13.1
109	OFFICE	OPEN OFFICE	34.82	13.53	438	10.61	4.12	40.69
110	OFFICE		13.13	8.83	116	4	2.69	10.78
110B	WASHROOM	FEMALE	8.21	3.56	42	2.5	1.09	3.9
110B	WASHROOM	FEMALE	8.21	3.5	43	2.5	1.09	3.9
110C	CORRIDOR		51.91	6.17	286	15.82	1.88	26.57
111	OFFICE		13.13	8.86	116	4	2.7	10.78
112	OFFICE		13.13	8.59	113	4	2.62	10.5
113	OFFICE		13.13	8.57	113	4	2.61	10.5
114	WASHROOM	MALE	14.43	24.75	324	4.4	7.54	30.1
114A	WASHROOM	MEN'S LOCKER ROOM	20.71	23.63	419	6.31	7.2	39.93
114B	WASHROOM	SHOWERS	15.83	4	63	4.82	1.22	5.85
114C	STORAGE		3.55	14.57	52	1.08	4.44	4.83
114D	WASHROOM	CARETAKING	3.9	4.04	16	1.19	1.23	1.49
114E	STORAGE		3.9	2.71	11	1.19	.83	1.02
114cor	CORRIDOR	VESTIBULE	23.73	16.57	285	7.23	5.05	26.48
114st	STAIRS		18.37	7.89	88	5.6	2.4	8.18
115	WASHROOM	FEMALE	14.61	16.29	184	4.45	4.97	17.09
115A	CORRIDOR		3.38	9.88	33	1.03	3.01	3.07
115cor	CORRIDOR		11.58	45.88	271	3.53	13.98	25.18
116	CORRIDOR		9.56	16.63	154	2.91	5.07	14.31
116A	OFFICE		9.49	16.63	148	2.89	5.07	13.75
116B	WORKSHOP	CARPENTRY SHOP	40.14	46.93	1861	12.23	14.3	172.89
116C	STORAGE		14.54	8.05	104	4.43	2.45	9.66
117	CORRIDOR		26.22	14.08	274	7.99	4.29	25.46
117A	FOOD SERVICE		29.66	9.5	289	9.04	2.9	24.99
117B	STORAGE		10.78	9.5	102	3.29	2.9	9.48
117D	STORAGE		31.77	14.44	459	9.68	4.4	42.64
117cor	CORRIDOR		5	25.99	130	1.52	7.92	12.08
118	OFFICE	OPEN OFFICE	19.99	40.45	809	6.09	12.33	75.16
118A	CORRIDOR		11.93	6.53	78	3.64	1.99	7.25
118B	OFFICE		10	11.32	115	3.05	3.51	10.88
118C	OFFICE		11.52	10	115	3.51	3.05	10.88
119	OFFICE		11.52	12.7	135	3.51	3.87	12.54
120	OFFICE		22.49	15.03	331	6.85	4.58	30.75
121	OFFICE		12.58	14.62	158	3.83	4.46	14.68
122cor	CORRIDOR		12.08	41.14	265	3.68	12.54	24.62
123	OFFICE		20.26	14.62	258	6.18	4.46	23.97
124	CONFERENCE		17.63	18.93	338	5.43	5.77	31.4
125	OFFICE		12.04	9.28	112	3.67	2.83	10.41
126	OFFICE		12.33	9.29	118	3.76	2.92	10.96
127	OFFICE		12.04	6.32	76	3.67	1.93	7.06
128	OFFICE		12.33	9.59	118	3.76	2.92	10.96
128cor	CORRIDOR		9.72	56.03	443	2.96	17.08	41.16

SPACE INVENTORY

ROOM NUMBER	ROOM NAME	DESCRIPTION	LENGTH (ft)	WIDTH (ft)	AREA (sq ft)	LENGTH (m)	WIDTH (m)	AREA (sq m)
129	OFFICE		12.04	12.23	147	3.67	3.73	13.66
129cor	CORRIDOR		58.85	9.09	414	17.94	2.77	38.46
130	OFFICE		12.33	9.59	118	3.76	2.92	10.96
131	OFFICE		12.04	9.28	112	3.67	2.82	10.31
132	OFFICE		12.1	9.59	116	3.69	2.92	10.78
133	OFFICE		12.04	9.43	114	3.67	2.87	10.59
134	OFFICE		12.1	9.59	116	3.69	2.92	10.78
135	OFFICE		12.04	9.43	114	3.67	2.87	10.59
137	OFFICE		12.04	9.43	114	3.67	2.87	10.59
139	OFFICE		12.04	9.46	114	3.67	2.88	10.59
139S	STORAGE	ID SAMPLES	6.56	5.72	37	2	1.74	3.44
140	STORAGE	PRINT ROOM	9.97	9.78	98	3.04	2.98	9.1
140C	CORRIDOR		40.9	13.69	276	12.47	4.17	25.64
141	OFFICE		9.42	9.81	92	2.87	2.99	8.55
142	OFFICE		9.39	9.81	92	2.86	2.99	8.55
144	FOOD SERVICE		14.5	15.49	176	4.42	4.72	16.35
145	OFFICE		9.27	11.15	103	2.83	3.4	9.57
146	OFFICE		9.27	11.21	103	2.83	3.42	9.66
147cor	CORRIDOR	VESTIBULE	4	5.72	23	1.22	1.74	2.14
150	OFFICE		8.65	11.53	100	2.64	3.51	9.29
150C	CORRIDOR		40.03	4.25	170	12.2	1.3	15.79
151	OFFICE		8.65	11.64	101	2.64	3.55	9.38
152	OFFICE		8.76	11.53	101	2.67	3.51	9.38
153	OFFICE		8.76	11.44	100	2.67	3.49	9.29
154	OFFICE		8.76	11.53	101	2.67	3.51	9.38
155	OFFICE		8.76	11.64	102	2.67	3.55	9.48
156	OFFICE		8.76	11.53	101	2.67	3.51	9.38
157	OFFICE		8.76	11.64	102	2.67	3.55	9.48
158	OFFICE		8.79	11.53	101	2.68	3.51	9.38
159	OFFICE		8.79	11.64	93	2.68	3.55	8.64
159A	MECH/ELECT		1.36	4.75	6	.41	1.45	.56
159M	CORRIDOR	VESTIBULE	4.91	4.25	21	1.5	1.3	1.85
160	CORRIDOR	LINK	11	5.79	64	3.35	1.76	5.85
160C	CORRIDOR		58.27	5.14	299	17.76	1.57	27.78
160V	CORRIDOR	VESTIBULE	4.89	4.94	24	1.49	1.51	2.23
161	OFFICE		9.17	14.06	129	2.8	4.29	11.98
162	FOOD SERVICE		25.34	12.34	313	7.72	3.76	29.08
163	OFFICE		8.57	14.06	121	2.61	4.29	11.24
165	OFFICE		8.57	14.06	121	2.61	4.29	11.24
167	OFFICE		8.57	14.06	120	2.61	4.29	11.15
168	STORAGE	COPY AREA	11.06	11.06	61	3.37	3.37	5.67
168A	STORAGE	AV STORAGE	6.13	5.23	32	1.87	1.59	2.97
169	OFFICE		8.57	14.06	121	2.61	4.29	11.24
170	CONFERENCE	BOARDROOM	28.52	12.34	352	8.69	3.76	32.7
170A	MECH/ELECT	AV STORAGE	2	5.23	10	.61	1.59	.93
171	OFFICE		8.57	14.06	121	2.61	4.29	11.24
173	OFFICE		9.09	14.06	128	2.77	4.29	11.89
175A	SHIPPING/RECEIVING		19.14	41.08	567	5.83	12.52	52.88
175B	WORKSHOP	PAINT SHOP	21.93	41.08	710	6.68	12.52	65.96
175C	STORAGE		9.11	12.17	111	2.78	3.71	10.31
176	WORKSHOP	ELECTRICAL SHOP	46.01	26.44	779	14.02	8.06	72.37
176A	OFFICE		12.37	11.02	136	3.77	3.36	12.63
176B	OFFICE		12.37	10.11	125	3.77	3.08	11.61
176C	STORAGE		13.46	8.41	99	4.1	2.56	9.2
176D	STORAGE		7.56	9.31	70	2.3	2.84	6.5
176E	FOOD SERVICE		11.04	7.53	83	3.36	2.3	7.71
176st	STAIRS		7.79	3.67	29	2.37	1.12	2.69



UNIVERSITY
OF MANITOBA

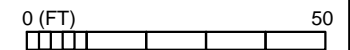
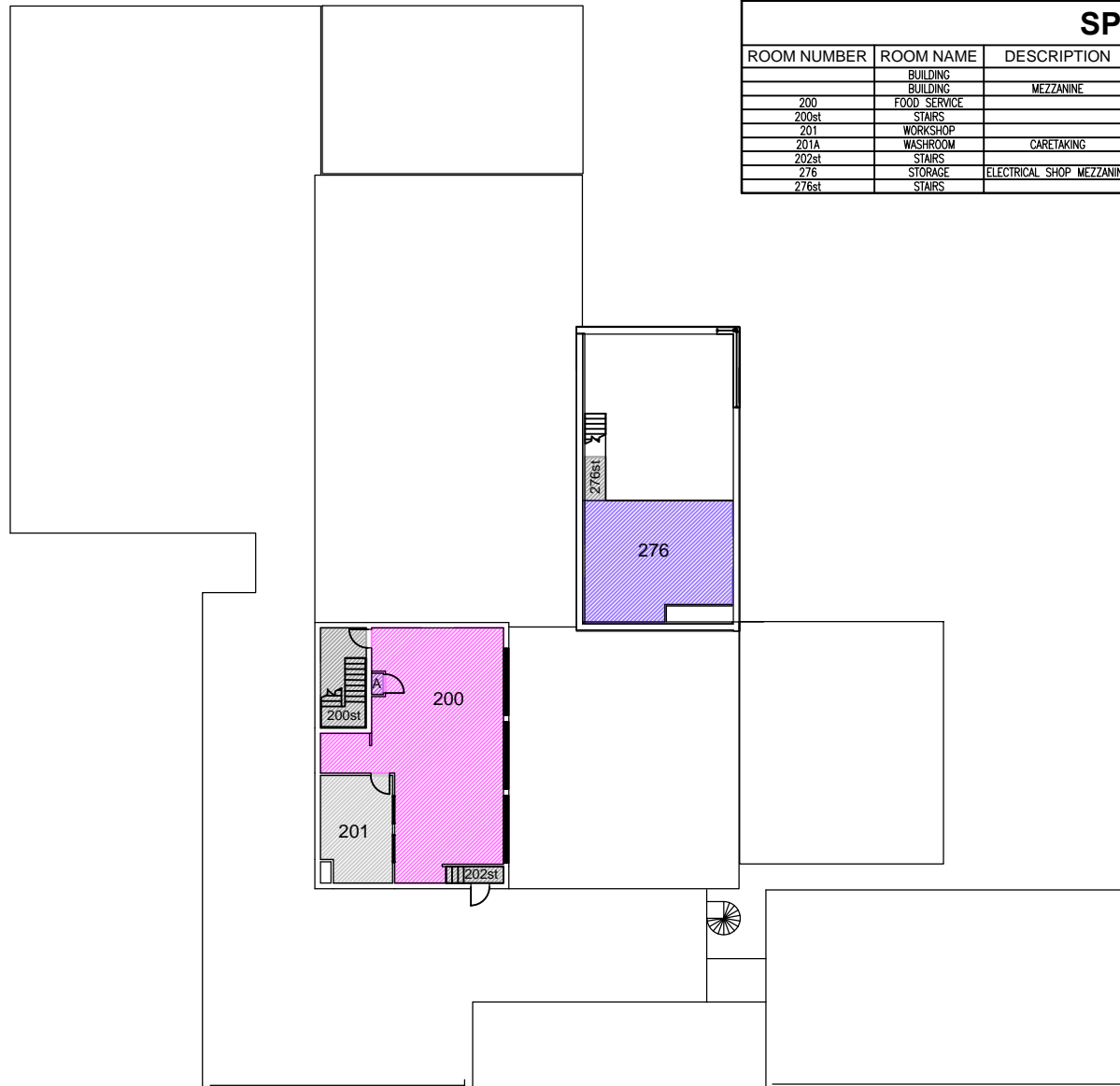
PHYSICAL PLANT - 100 LEVEL SPACE INVENTORY LIST



Physical Plant Department
89 Freedman Crescent Winnipeg, MB

SPACE INVENTORY

ROOM NUMBER	ROOM NAME	DESCRIPTION	LENGTH (ft)	WIDTH (ft)	AREA (sq ft)	LENGTH (m)	WIDTH (m)	AREA (sq m)
	BUILDING		47.79	34.77	1662	14.57	10.6	154.4
	BUILDING	MEZZANINE	23.54	29.33	691	7.17	8.94	64.2
200	FOOD SERVICE		32.83	45.85	1020	10.01	13.98	94.76
200st	STAIRS		18	8.26	148	5.49	2.52	13.75
201	WORKSHOP		12.93	19.35	240	3.94	5.9	22.3
201A	WASHROOM	CARETAKING	2.05	3.77	8	.62	1.15	.74
202st	STAIRS		5	10.29	51	.91	3.14	2.88
276	STORAGE	ELECTRICAL SHOP MEZZANINE	26.48	21.79	539	8.07	6.64	50.07
276st	STAIRS		7.79	3.67	29	2.37	1.12	2.69



**UNIVERSITY
OF MANITOBA**

**PHYSICAL PLANT - 89 FREEDMAN CR
609 - LEVEL 200 AREA**

October 4, 2016



**Physical Plant Department
89 Freedman Crescent Winnipeg, MB**