

REFER TO BLDG 309
FOR CONTINUATION OF PLAN

EXTENDED EDUCATION COMPLEX - 310
000 LEVEL



406 UNIVERSITY CRESCENT
0 (FT)



2016 / 12
1" = 40'-0"



UNIVERSITY
OF MANITOBA

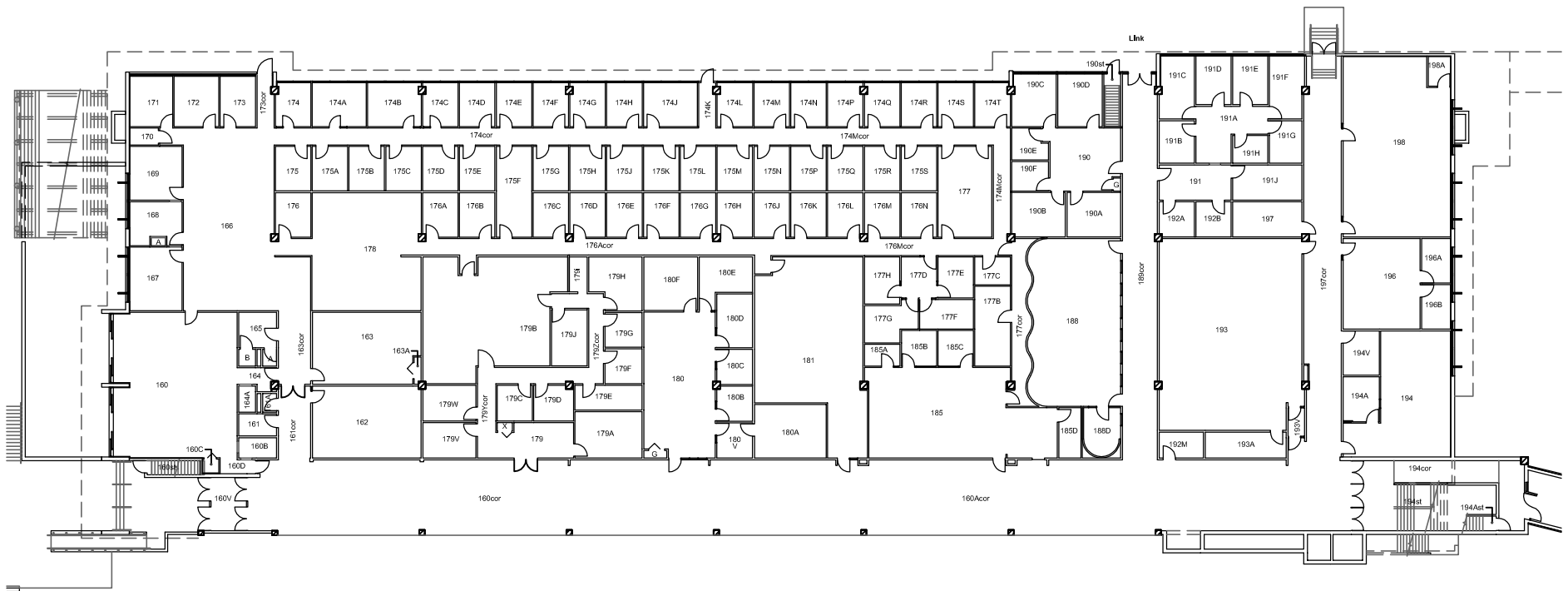
EXTENDED EDUCATION - 66 DAFOE ROAD

310 - LEVEL 000

April 9, 2018



Physical Plant Department
89 Freedman Crescent Winnipeg, MB



**EXTENDED EDUCATION COMPLEX - 310
100 LEVEL**



406 UNIVERSITY CRESCENT
0 (FT) 50



02/04/2018



**UNIVERSITY
OF MANITOBA**

**EXTENDED EDUCATION - 66 DAFOE ROAD
310 - LEVEL 100
April 6, 2018**



Physical Plant Department
89 Freedman Crescent Winnipeg, MB