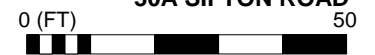
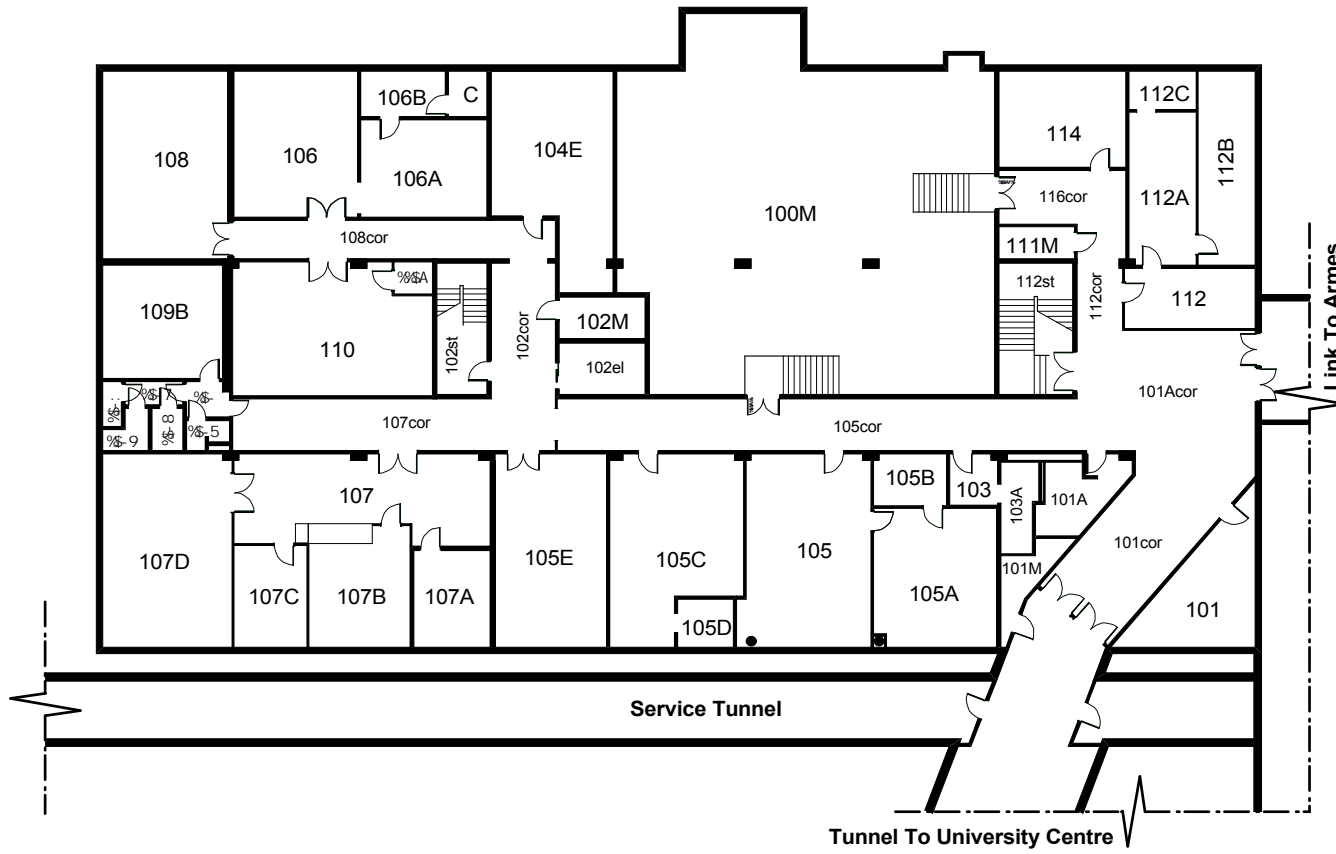


ALLEN PHYSICS LABORATORY - 151
000 LEVEL

30A SIFTON ROAD



MARCH 30, 2007



ALLEN PHYSICS LABORATORY

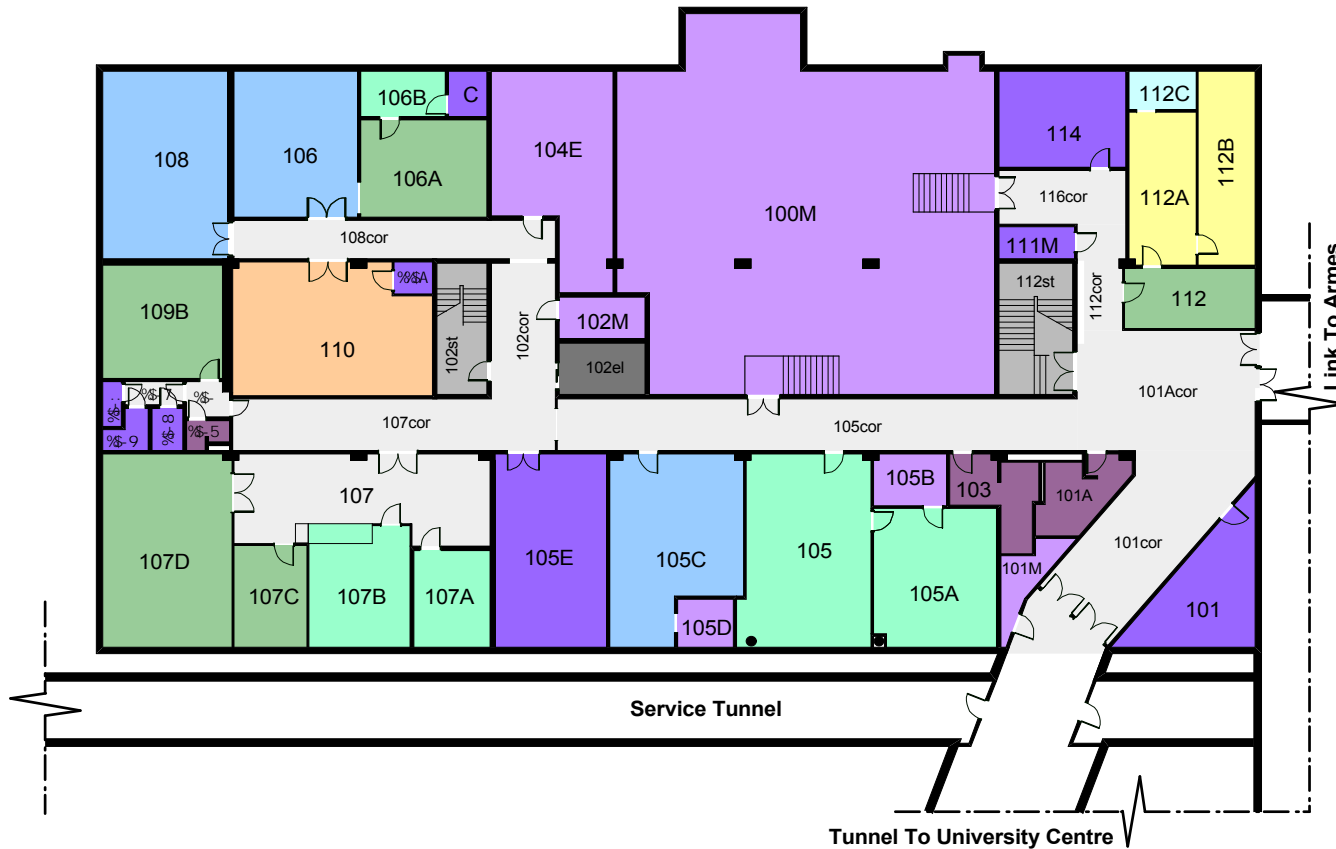
151

100 LEVEL

30A SIFTON ROAD



DECEMBER 8, 2013

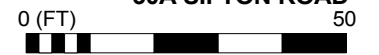


ALLEN PHYSICS LABORATORY

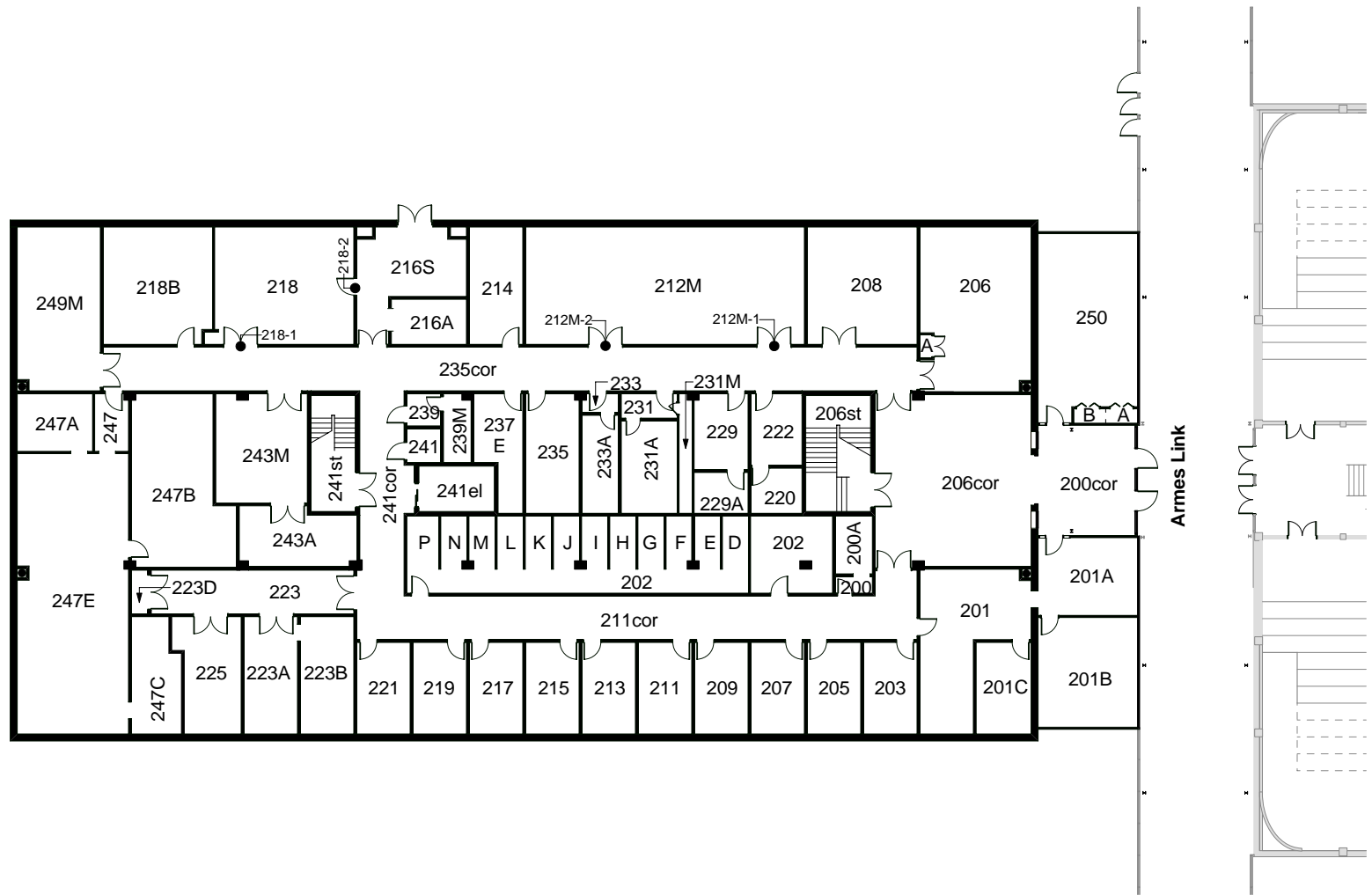
151

100 LEVEL

30A SIFTON ROAD



DECEMBER 8, 2013



ALLEN PHYSICS LABORATORY - 151
200 LEVEL
 30A SIFTON ROAD



DECEMBER 5, 2008



ALLEN PHYSICS LABORATORY - 151
200 LEVEL
 30A SIFTON ROAD



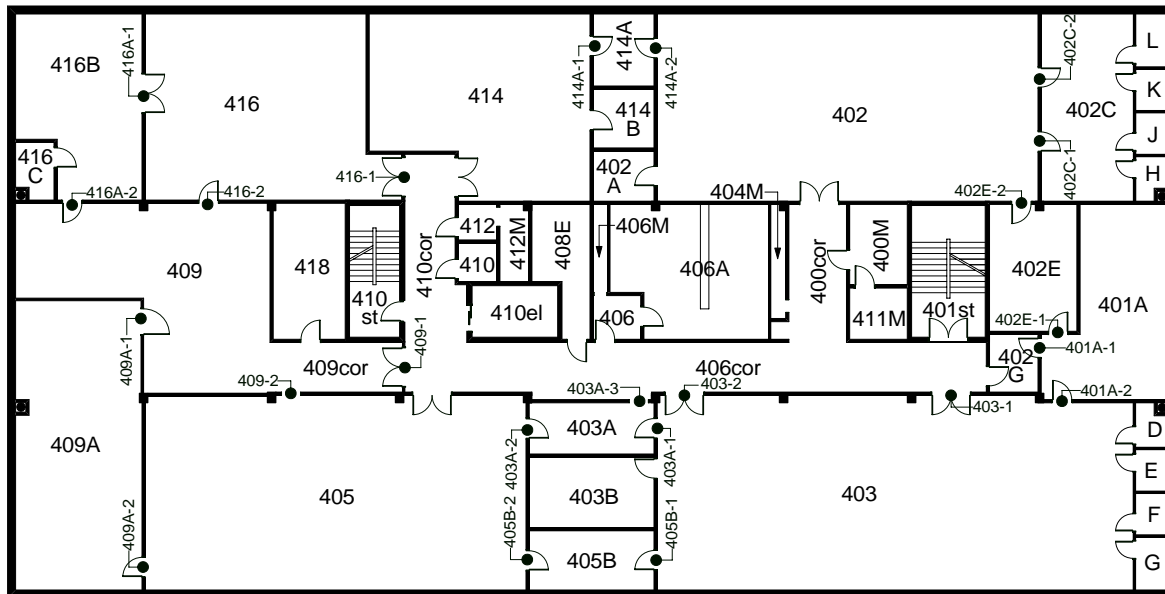
DECEMBER 5, 2008



ALLEN PHYSICS LABORATORY - 151
300 LEVEL
30A SIFTON ROAD

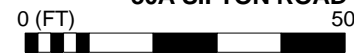


NOVEMBER 7, 2014



ALLEN PHYSICS LABORATORY - 151
400 LEVEL

30A SIFTON ROAD



DECEMBER 5, 2008

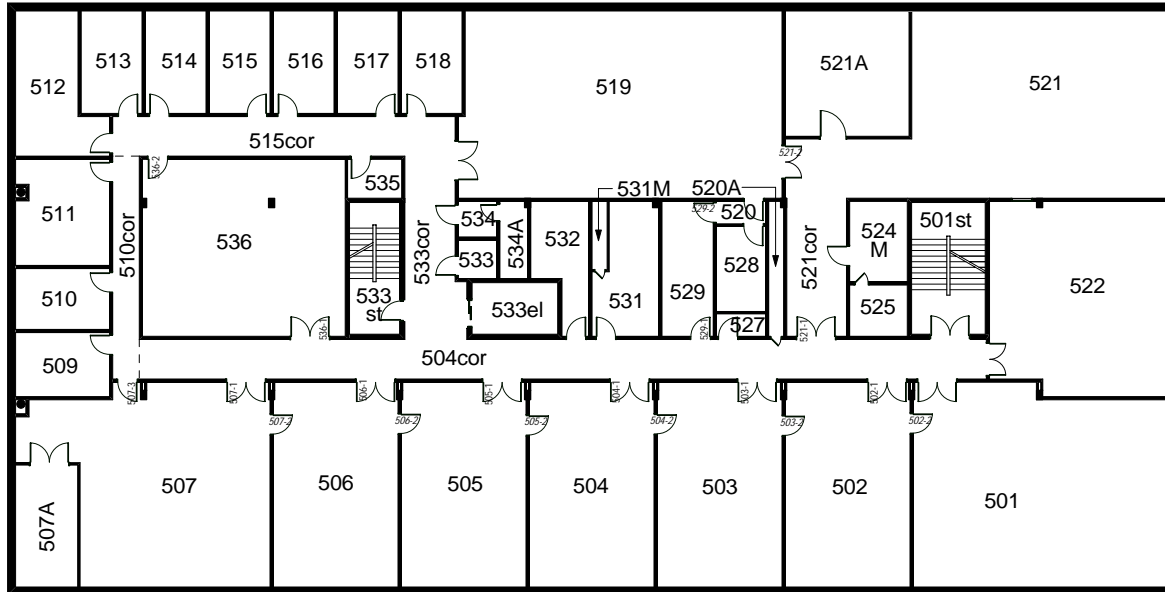


ALLEN PHYSICS LABORATORY - 151
400 LEVEL

30A SIFTON ROAD



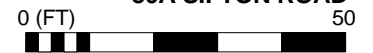
DECEMBER 5, 2008



ALLEN PHYSICS BUILDING - 151

500 LEVEL

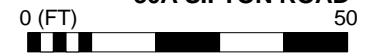
30A SIFTON ROAD



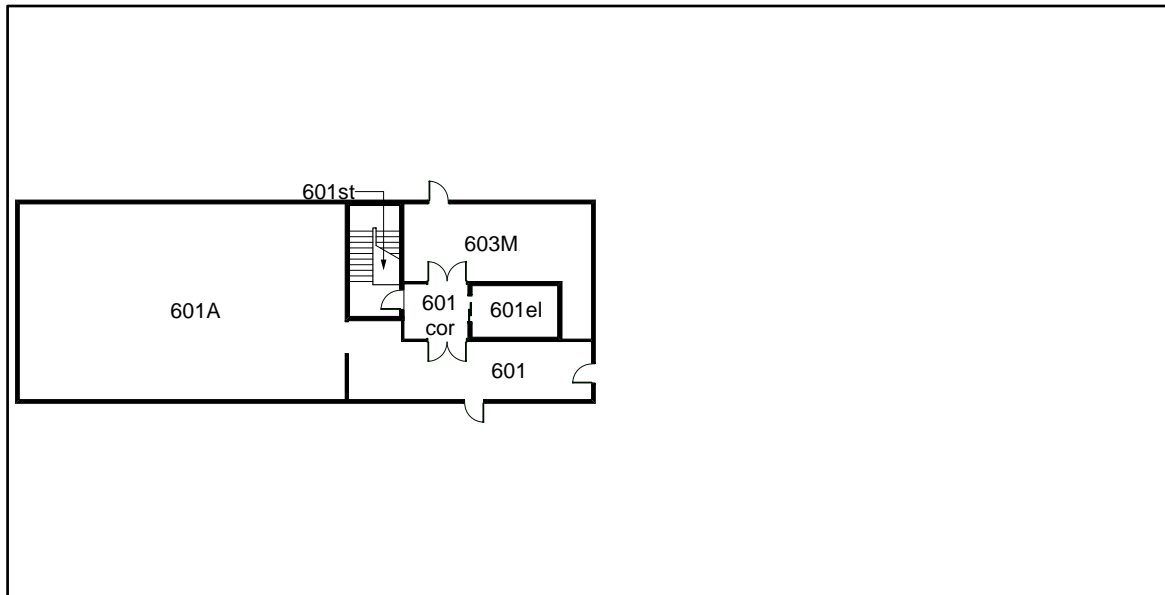
MARCH 1, 2011



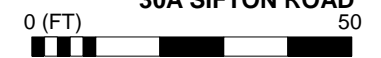
ALLEN PHYSICS BUILDING - 151
500 LEVEL
 30A SIFTON ROAD



MARCH 1, 2011



ALLEN PHYSICS LABORATORY - 151
600 LEVEL
30A SIFTON ROAD



APRIL 4, 2007