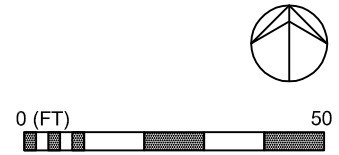
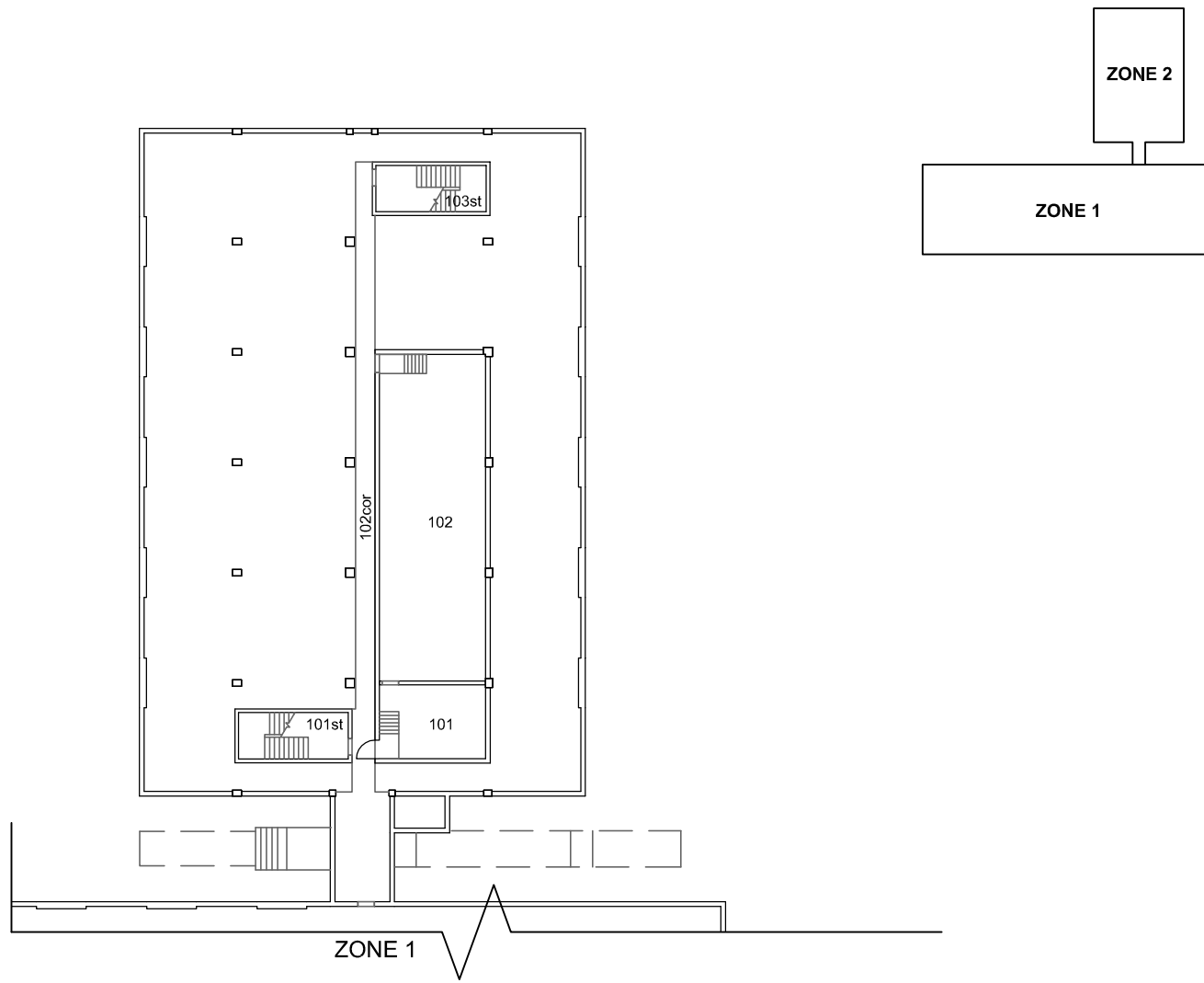


UNIVERSITY
OF MANITOBA

ELLIS BUILDING - 13 FREEDMAN CRESCENT
037 - LEVEL 100 ZONE 1 **March 6, 2018**



Physical Plant Department
 89 Freedman Crescent Winnipeg, MB



UNIVERSITY
OF MANITOBA

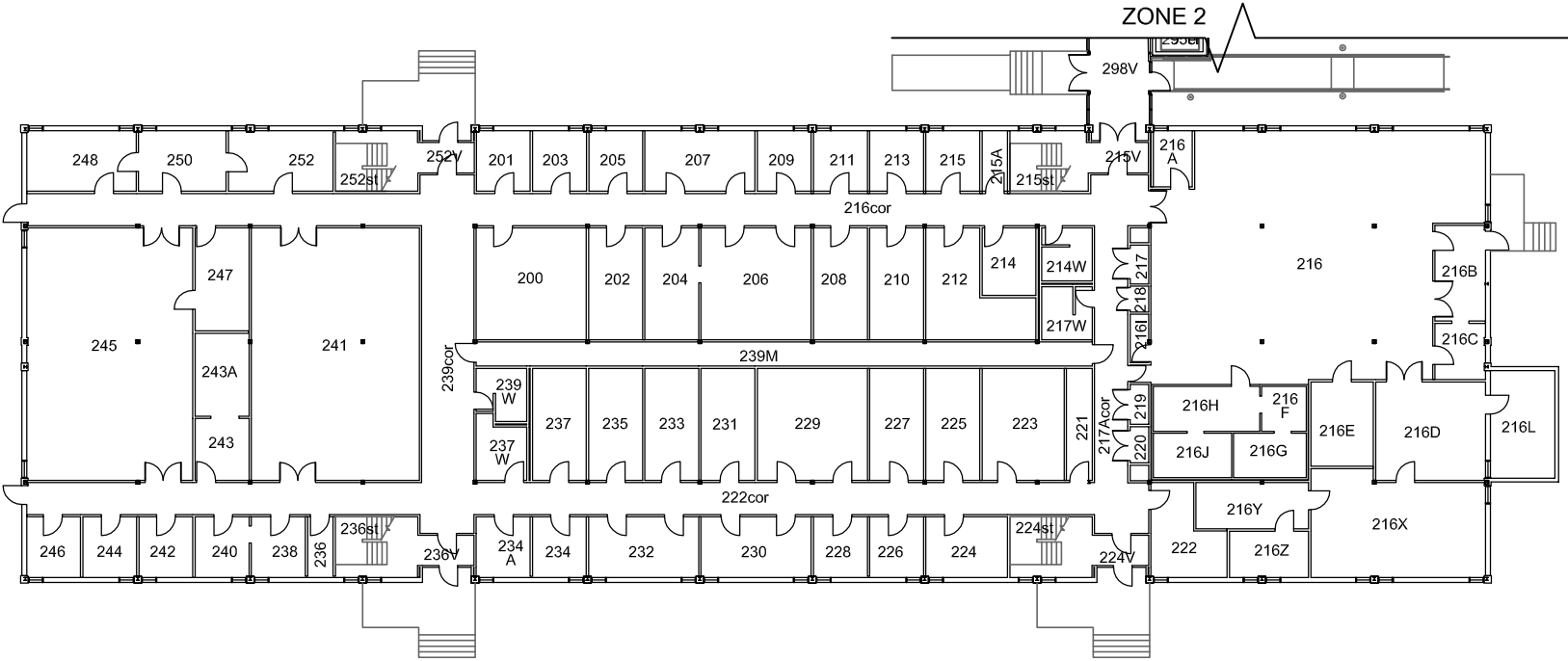
ELLIS BUILDING - 13 FREEDMAN CRESCENT
037 - LEVEL 100 ZONE 2 **March 6, 2018**



Physical Plant Department
 89 Freedman Crescent Winnipeg, MB

ZONE 2

ZONE 1

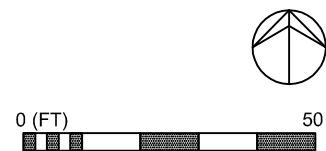
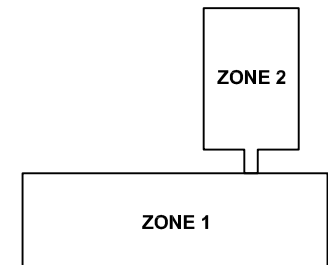
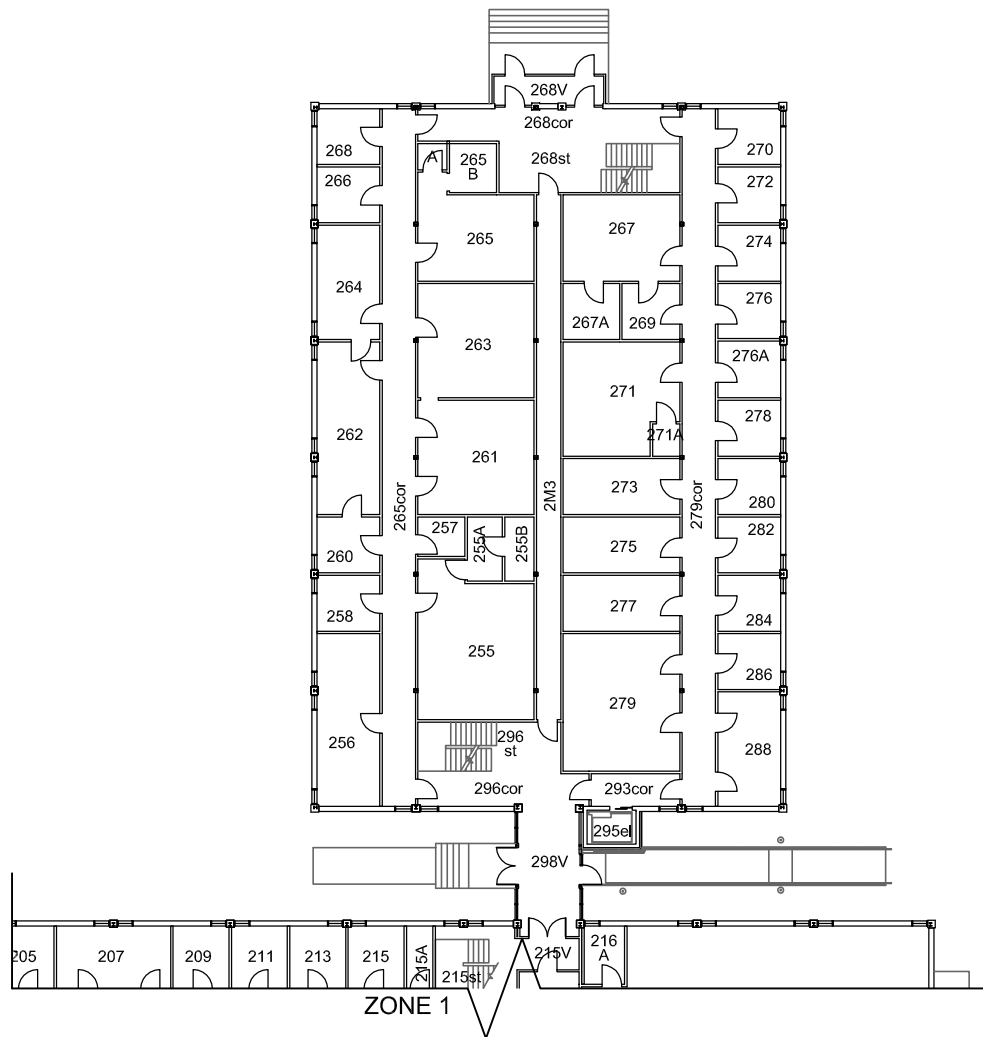


UNIVERSITY OF MANITOBA

ELLIS BUILDING - 13 FREEDMAN CRESCENT
037 - LEVEL 200 ZONE 1 AREA
March 6, 2018



Physical Plant Department
89 Freedman Crescent Winnipeg, MB



UNIVERSITY
OF MANITOBA

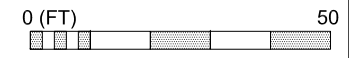
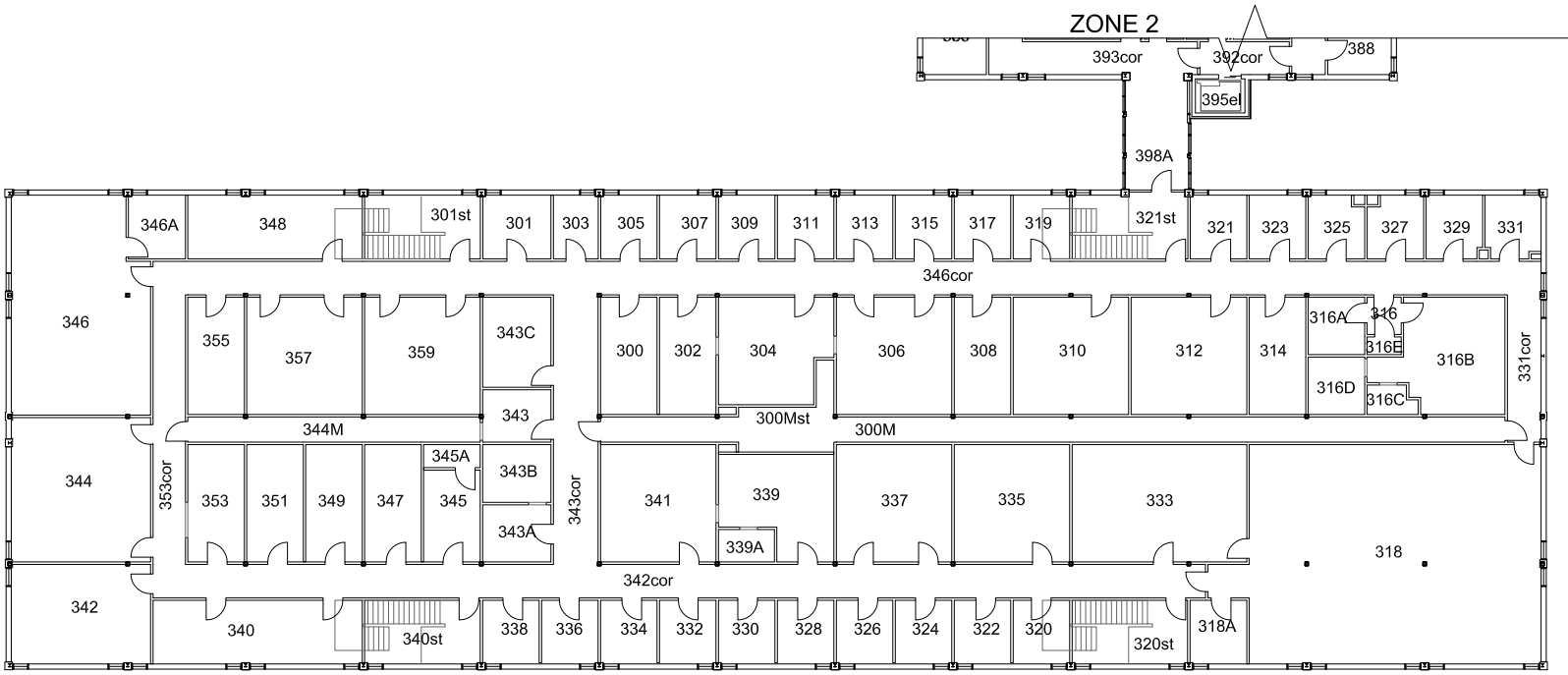
ELLIS BUILDING - 13 FREEDMAN CRESCENT
037 - LEVEL 200 ZONE 2 AREA **March 6, 2018**



Physical Plant Department
89 Freedman Crescent Winnipeg, MB

ZONE 2

ZONE 1

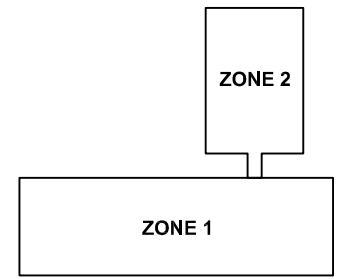
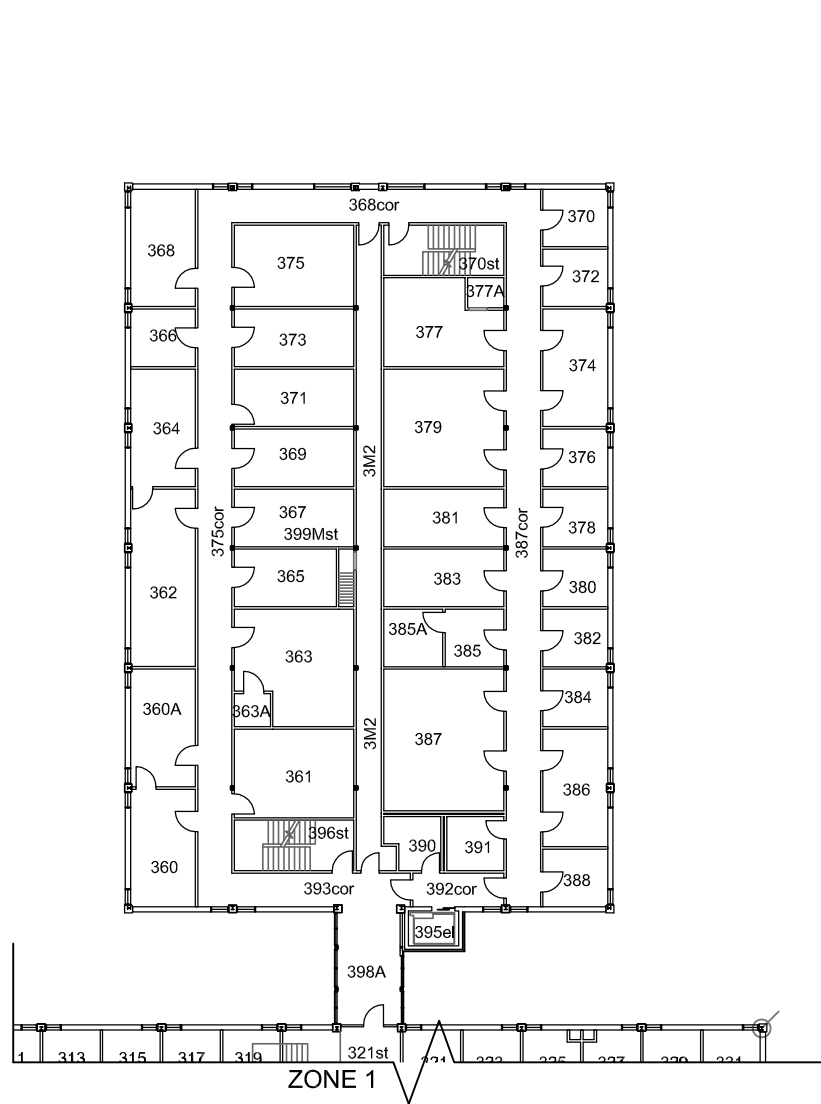


UNIVERSITY OF MANITOBA

ELLIS BUILDING - 13 FREEDMAN CRESCENT
037 - LEVEL 300 ZONE 1
May 15, 2019



Physical Plant Department
89 Freedman Crescent Winnipeg, MB

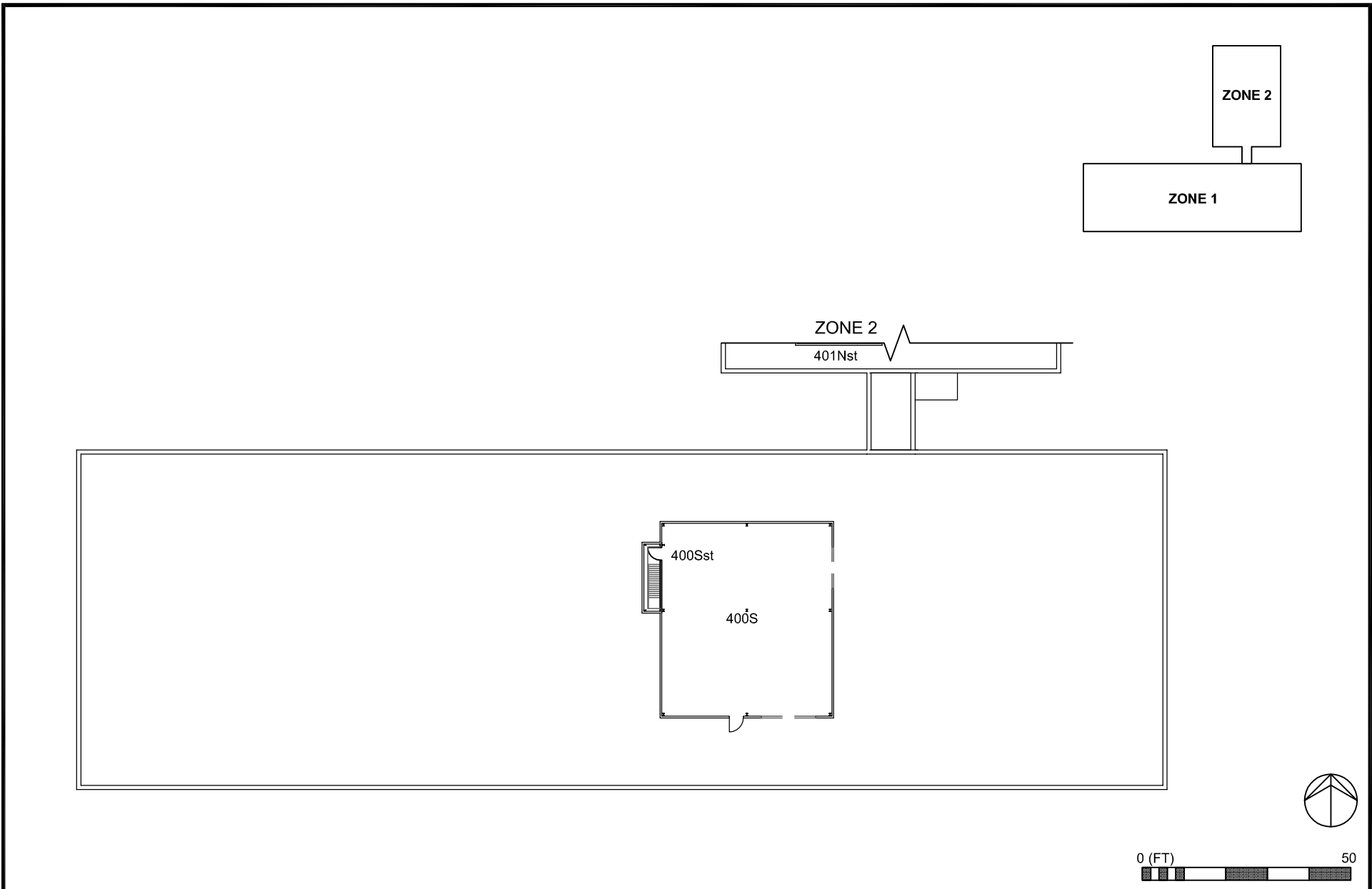


UNIVERSITY
OF MANITOBA

ELLIS BUILDING - 13 FREEDMAN CRESCENT
037 - LEVEL 300 ZONE 2 **March 6, 2018**



Physical Plant Department
89 Freedman Crescent Winnipeg, MB

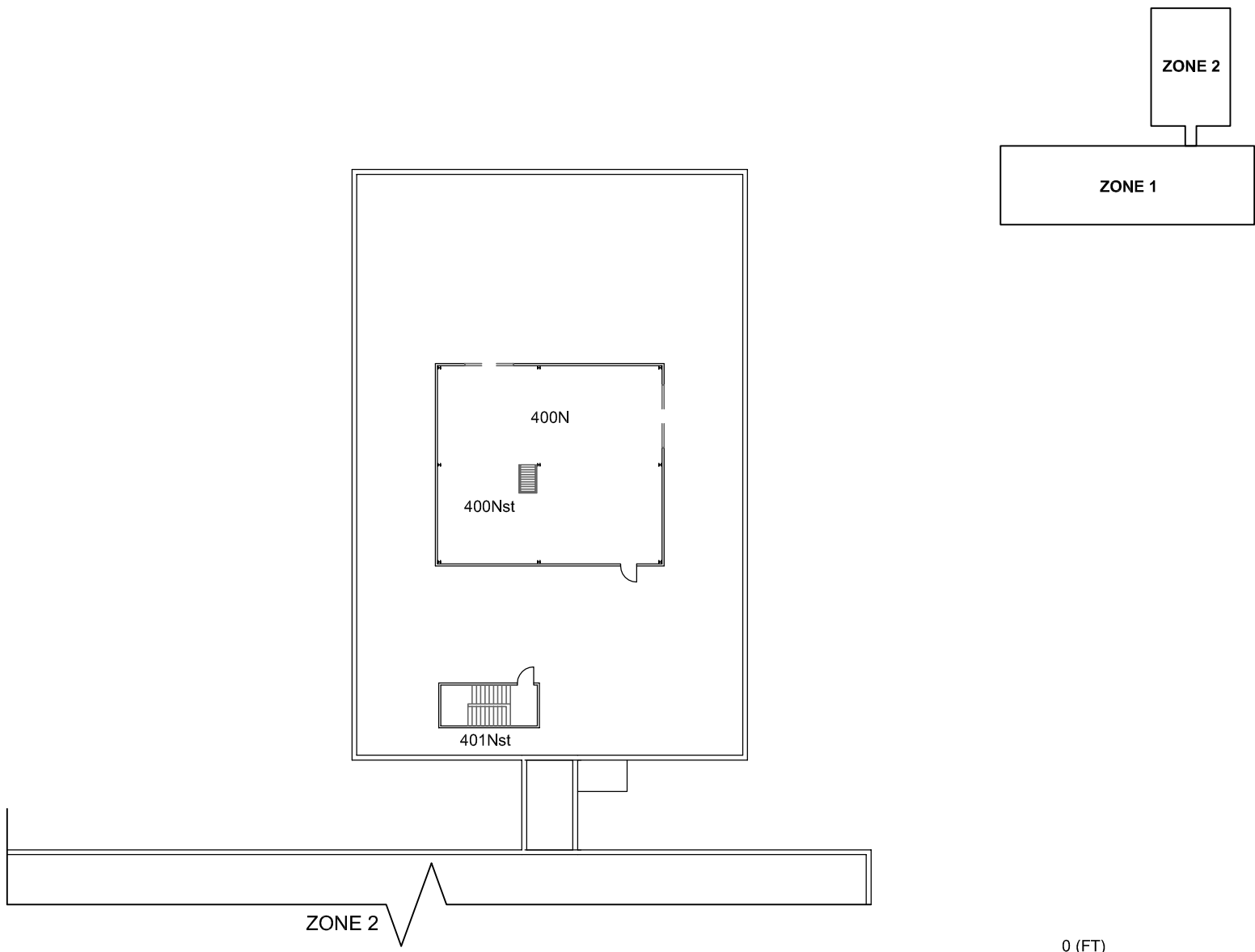


UNIVERSITY
OF MANITOBA

ELLIS BUILDING - 13 FREEMAN CRESCENT
037 - LEVEL 400 ZONE 1 AREA **March 6, 2018**



Physical Plant Department
 89 Freedman Crescent Winnipeg, MB



UNIVERSITY
OF MANITOBA

ELLIS BUILDING - 13 FREEMAN CRESCENT

037 - LEVEL 400 ZONE 2 AREA

June 7, 2017



Physical Plant Department
89 Freedman Crescent Winnipeg, MB