

Carman Orientation

Justice Zhanda (P.Ag)

C: (204) 745 8642

O: (204) 745 3944

justice.zhanda@umanitoba.ca

Room: 101-690

Terrance Anseeuw

C: (204) 781 8510

Terrance.Anseeuw@umanitoba.ca

Room: 112-690 or 125-690



**University
of Manitoba**



TRADITIONAL TERRITORIES == ACKNOWLEDGEMENT ==

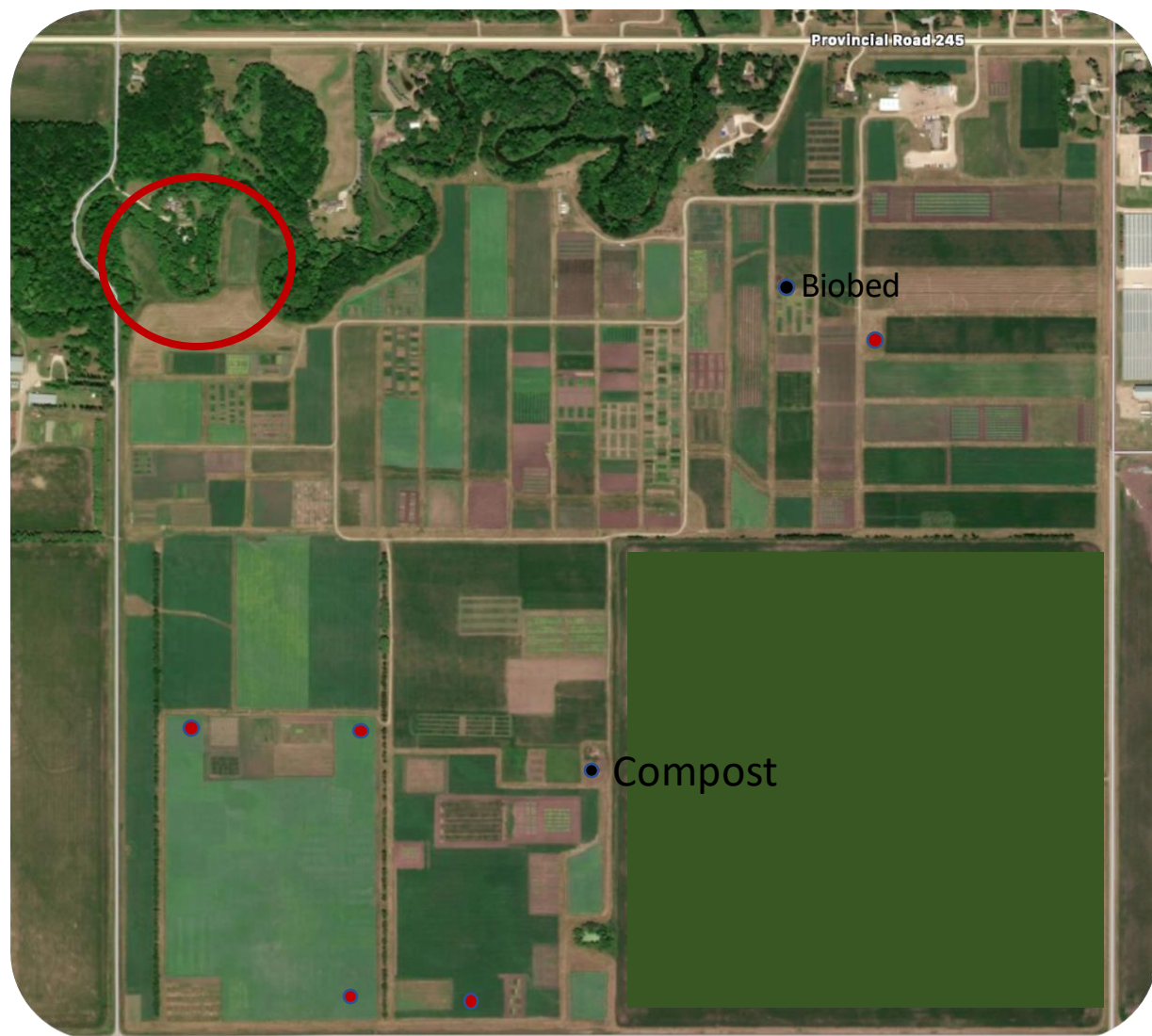
The University of Manitoba campuses are located on original lands of Anishinaabeg, Cree, Oji-Cree, Dakota, and Dene peoples, and on the homeland of the Métis Nation.

We respect the Treaties that were made on these territories, we acknowledge the harms and mistakes of the past, and we dedicate ourselves to move forward in partnership with Indigenous communities in a spirit of reconciliation and collaboration.



General overview

- 406 acre research farm
- A number research projects each year – canola, wheat, soybean, weeds, diseases, cover crops, forages etc.
- Collaboration with Manitoba Ag and other players in the Industry





umanitoba.ca



**University
of Manitoba**



umanitoba.ca



**University
of Manitoba**

Sources of Information

- On site at Ian N. Morrison Research Facility – contact The Manager or Technicians from your programs
- [Plant Science research and facilities | Faculty of Agricultural and Food Sciences | University of Manitoba \(umanitoba.ca\)](#)
- [Crop biosecurity - Canadian Food Inspection Agency \(canada.ca\)](#)
- [National Voluntary Farm-Level Biosecurity Standard for the Grains and Oilseeds Industry - Canadian Food Inspection Agency \(canada.ca\)](#)



In Case of Emergency Call 911

YOU ARE LOCATED AT:

Emergency Address

25024, PR 245, R. M. of Dufferin

(1.8 km West of Carman on Highway 245, from junction of highways 3 and 245)

**The University of Manitoba, Ian N. Morrison Research Farm,
Carman & Region Facility, Carman, Manitoba**

(North ½ Section 23-6-5W, Southwest ¼ Section 23-6-5W)

Urgent Numbers:

Campus Security, Fort Garry

(204)-474-9341 (emergency**)**

Alarm issues

(204)-474-9312 (non-emergency)

Non-emergency Numbers:

Justice Zhanda

(204)-745-8642 (cell), office (204) 745-8642

Terrance Anseeuw

(204)-781-8510 (cell)



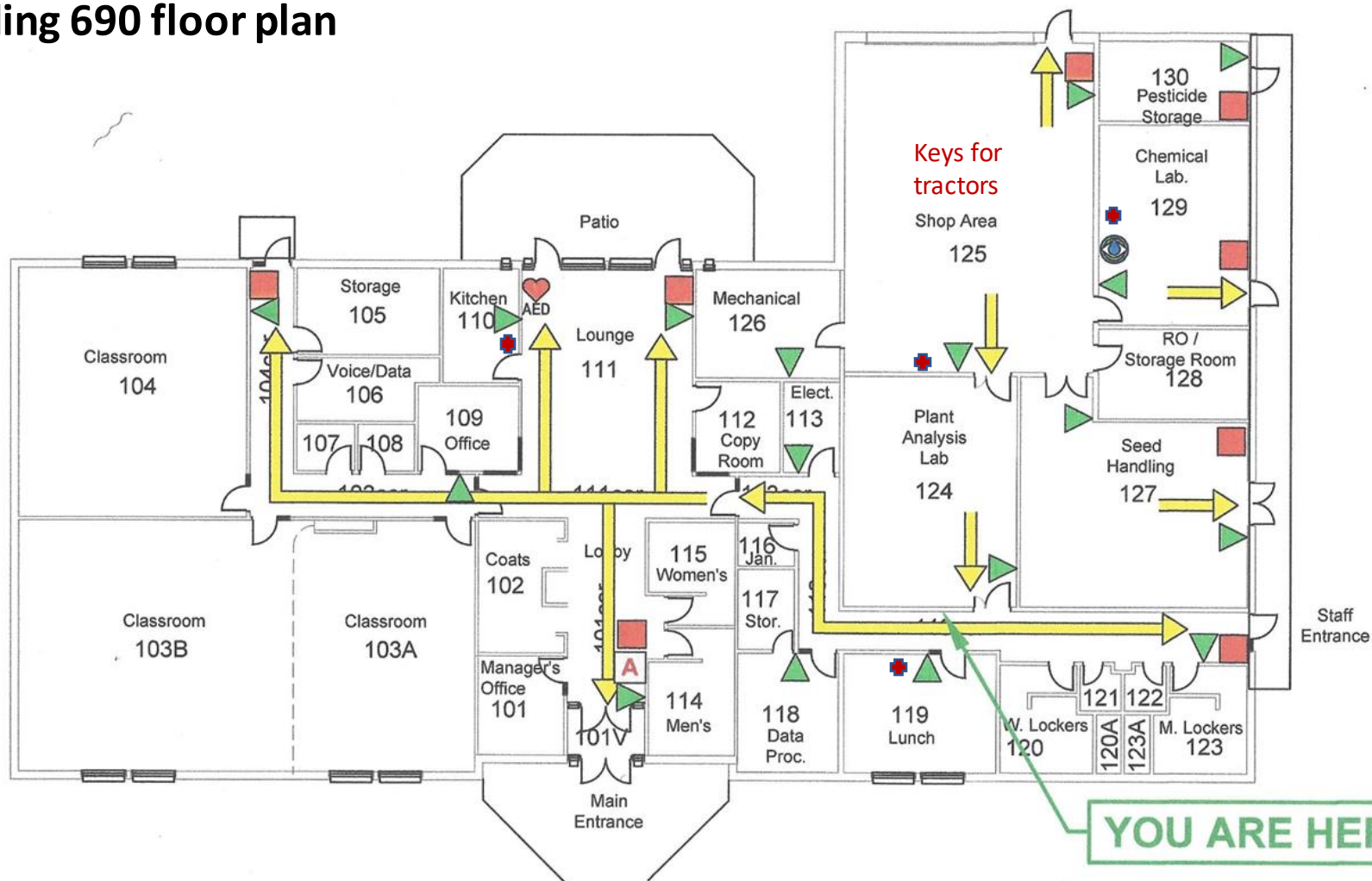
Main Building



- Building Fire Alarm
- Emergency Exit Plan
 - First aid kits
- Resource Rooms



Building 690 floor plan



● Muster point

✚ First aid kit

YOU ARE HERE

EMERGENCY EXIT PLAN

IAN N. MORRISON RESEARCH FARM
CARMAN & REGION FACILITY - 100 Level
25024 Rural Municipality of Dufferin
North 1/2 Section 23-6-5W
Carman, Manitoba
EP-690-L0100-EEP119COR
October 31, 2017



Physical Plant Department
89 Freedman Crescent Winnipeg, MB



UNIVERSITY
OF MANITOBA

A Annunciator Panel

■ Pull Station

▲ Fire Extinguisher

▶▶ Exit Route

**Automated
External
Defibrillator**

**Emergency
Eyewash/Shower**

Other locations with Emergency equipment



- Each building is equipped with a fire extinguisher
- Eye wash station located in front of building #3



Fire Emergency Procedures

UNIVERSITY OF MANITOBA - CARMAN & REGION FACILITY GENERAL **FIRE EMERGENCY** PROCEDURES

SHOULD YOU DISCOVER OR SUSPECT A FIRE

R equest everybody in the area to evacuate the building. Remove anybody in immediate danger.

A ctivate the building fire alarm system by pulling the manual pull station. From a safe location, **dial “911”** and report the fire. Also, inform University Campus Security, telephone: 1-204-474-9341.

C onfine the fire by closing all doors and windows.

E xtinguish the fire using the appropriate fire extinguisher. Do not attempt to extinguish a fire if this will place you in immediate danger.

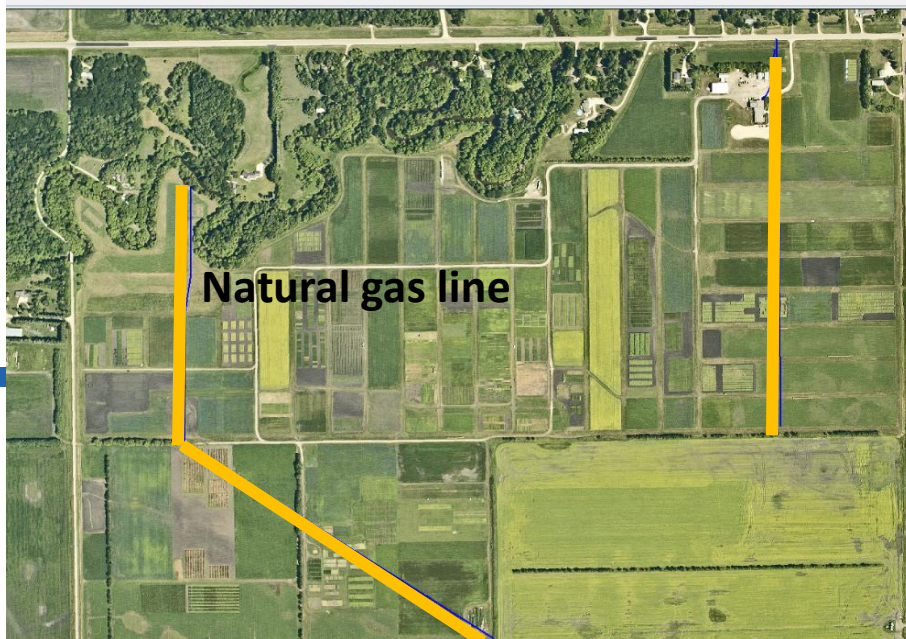
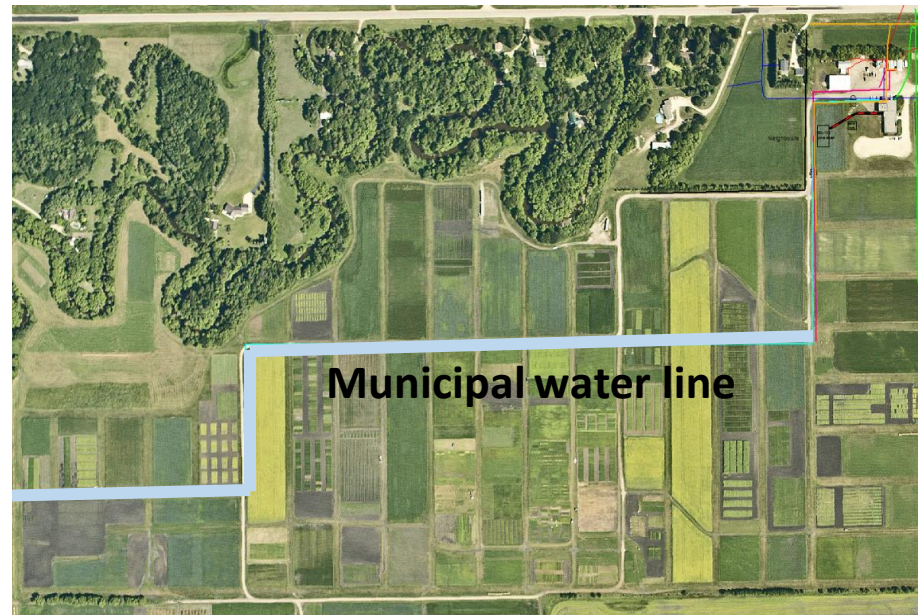
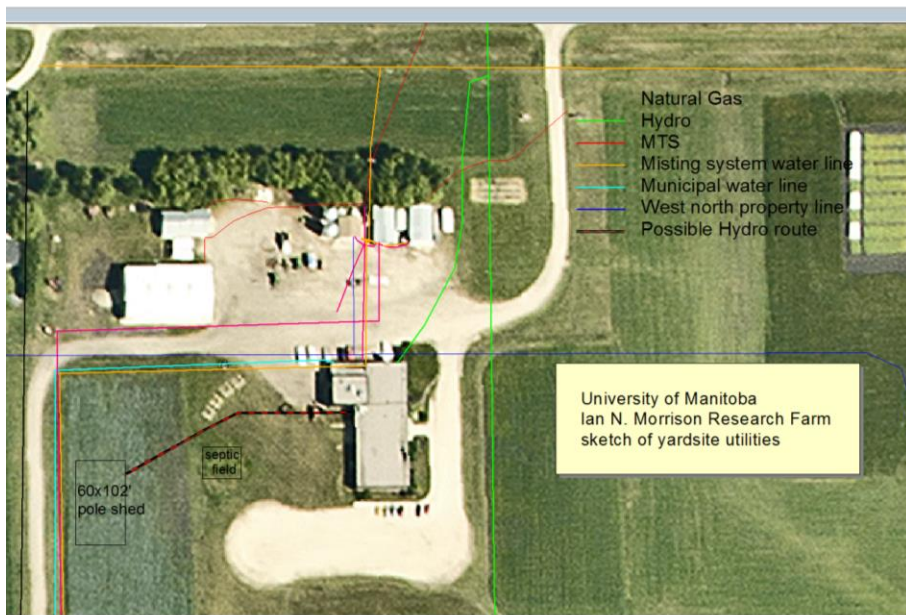
NEVER USE ELEVATORS DURING A FIRE ALARM.

WHEN THE FIRE ALARM SOUNDS

1. Cease all activities. Turn off heat producing devices. Leave overhead lights on.
2. Close all doors and/or windows in the immediate area.
3. Evacuate the building immediately using the nearest safe available stairwell.
4. Remain outside the building until the most senior member of the Carman Fire Department or the University Fire Marshal gives “ALL CLEAR”.



Potential Hazards on the farm



13 Hazards Cont'd



Hazards cont'd





Marker poles



Range rings-not scrap metal



Misting box

Biobed





Markers available for guidance to the biobed

umanitoba.ca



**University
of Manitoba**

Plant Science Department First Aid Responders

- Terrance Anseeuw 204-781-8510
- Becky Dueck 204-296-6367
- Rob Visser 204-807-9933
- Roger Lorias 204-223-8991





Let's talk Safety



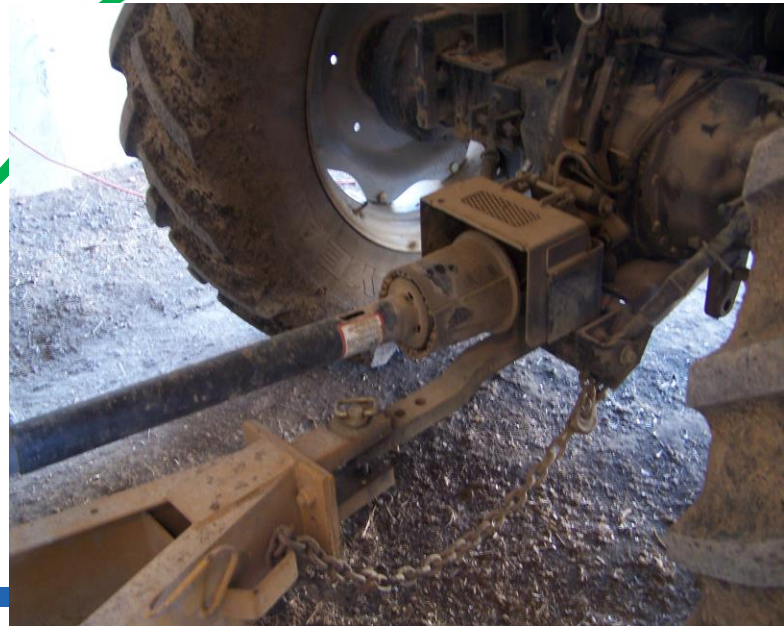
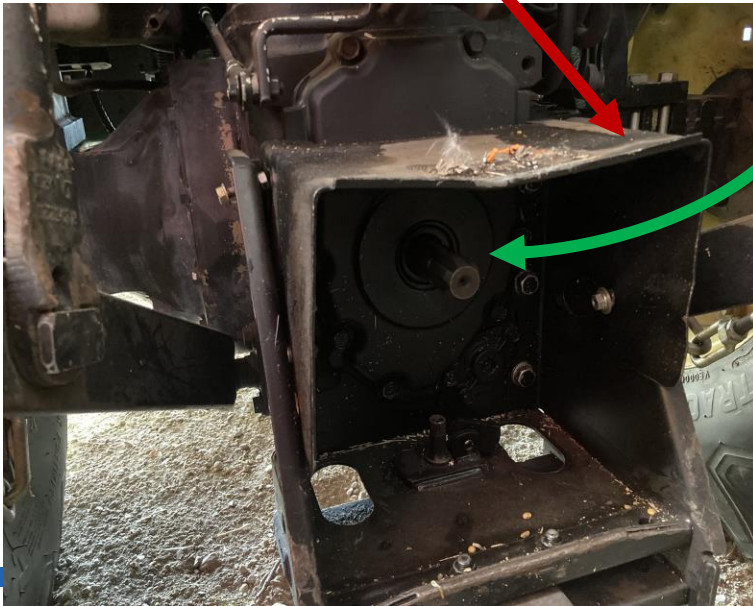
**University
of Manitoba**

Tractor Safety & Pre-use checks link (unlisted)

<https://www.youtube.com/playlist?list=PLaNpczapd8GG3cOt6VAc-d4r5HJadPuFV>

- Videos done by some of the summer students (Zack, Reid and Tessa) and Techs (Wilson and Wil) in 2021





University
of Manitoba

LET'S FARM SAFELY AND GET HOME SAFE AT THE END OF EVERY DAY

USE THIS 5 MINUTE CHECK BEFORE YOU BEGIN WORK



Lubricants

<https://www.agriland.ie/farming-news/farm-safety-12-checks-everyone-working-with-tractors-needs-to-undertake/>

To be covered in detail on site



University
of Manitoba

- Check this too



Equipment operation

- Training will be provided on site
- Equipment and Fuel log books
- Demonstrate to supervising Techs
- Tractors, spraying, lab, refueling, shop tools, welding machines
- Report any mechanical problems and record in log books



**University
of Manitoba**

- No equipment or items in front of electric panels





Tool pick up and drop off in room 125

umanitoba.ca



**University
of Manitoba**

Log sheets/forms

➤ Equipment booking

- Program specific equipment
 - Shared equipment
- ✓ (4) XLSX File viewer | Microsoft Teams







umanitoba.ca



**University
of Manitoba**

Log sheets/Forms

	Equipment:					Caretaker:						
LOG BOOK							Oil					Notes
Date	Hours In	Hours Out	Hours Used	Purpose	Program	Initials	Engine	Hydraulic	Coolant	Fuel	Other	



Tractor log sheet

Footnotes: Contact Caretaker:	when hours are reached for oil change, dusty conditions and air filter and radiator need to be blown clean, greasing, oil is to be added,	



Log sheets/Forms

[illegible]

[illegible]

Biosecurity



<https://umanitoba.ca/agricultural-food-sciences/sites/agricultural-food-sciences/files/2021-02/fafs-web-biosecurity-protocol-14-mar-19.pdf>

© 2022 MSD Animal Health

umanitoba.ca



**University
of Manitoba**

Carman protocols

- **Visitors** – parking lot south of the main building
- **Handling & disposal of material** – seed, plant tissue, soil, compost, water
 - ✓ Processed and disposed where sampling occurred
 - ✓ Biosecurity protocol to be followed for offsite samples brought to Carman for processing – must also be clearly labelled, kept separate from other material
- **Human sanitation** – disposable foot covering to be worn where possible
 - Pre-clean footwear in the field, use foot scrapers and/or brushes if necessary and disinfect
- **Vehicles, trailers and equipment** – clean prior to entering and leaving the facility
 - ❖ Concrete wash pad and pressure washer by shed #4 (first building west of the main driveway)
 - ❖ Remove sticky mud from vehicles and equipment before driving back to the yard

Biosecurity cont'd



**University
of Manitoba**

Evaluation of clubroot disinfectants (Harding et al. 2019)

- 24 disinfectants tested
- Among them, bleach most effective at 1.7% concentration while spray nine was the second most effective at 20% concentration
- Spore mortality at >95%

Biosecurity



Equipment cleaning facility



- High pressure washer-use proper nozzles to avoid damaging your vehicle
- Concrete and gravel wash area by building#4

Biosecurity –equipment cleaning





Clean
equipment for
the next user –
saves everyone
time

Housekeeping



Lunch and coffee breaks



- Students' lunch committee???
- Maximum 6 people in room 119
- Classroom 103 B – max 10 people
- Picnic tables – North of farm yard



• Lock up



**University
of Manitoba**