

Fusarium Management in Ontario

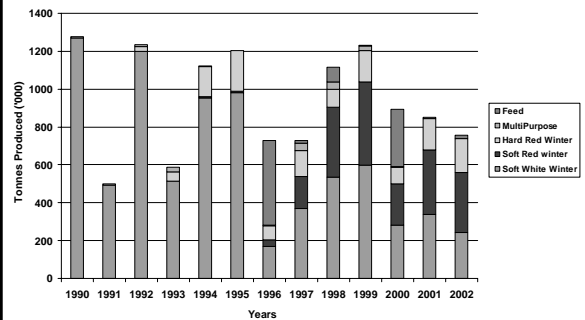
Peter Johnson, Cereal Specialist, Ontario Ministry of Agriculture and Food, 581 Huron St.
Stratford, ON N5A 5T8 E-mail: peter.johnson@omaf.gov.on.ca

Fusarium Management in Ontario

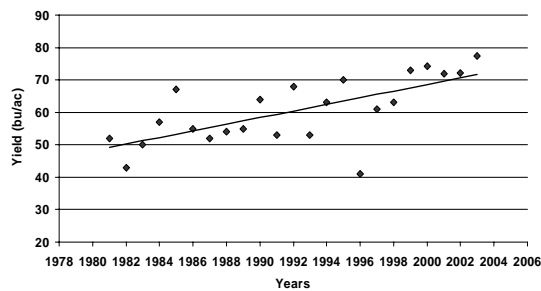
The Token Farm Boy
from the East

Peter Johnson, Cereal Specialist
Ontario Ministry of Agriculture & Food
peter.johnson@omaf.gov.on.ca

Provincial Winter Wheat Production 1990 - 2002



Provincial Winter Wheat Yields 1981 - 2003



Updated: October 6, 2003

Fusarium Management

- Since 1884!
- Crop Rotation
- Seed Treatments: 90% plus treated

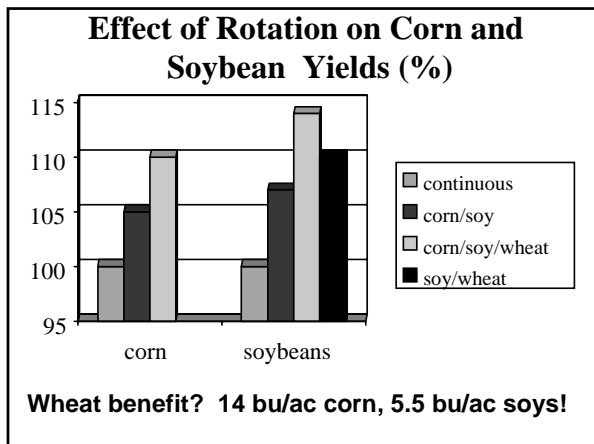


Fusarium Management

- Since 1884!
- Crop Rotation
- Seed Treatments: 90% plus treated
- Tillage
- Planting/headed dates
- Varieties
- Fungicides/Forecasting
- Combine adjustment
- Harvest Storage

Fusarium Management in Ontario

Peter Johnson, Cereal Specialist, Ontario Ministry of Agriculture and Food, 581 Huron St.
Stratford, ON N5A 5T8 E-mail: peter.johnson@omaf.gov.on.ca



- ### *Rotation!!*
- NEVER after corn
 - No wheat after wheat
 - Not after hay
 - Barley.....
 - Oats
 - Canola, edible beans, soybeans, peas

Tillage?

• **CROP ROTATION!!!!**

Planting/Heading Dates

Cultivar	Heading Date
Carlisle	162
Wisdom	163
Maxine	164
25R23	165
Warthog	166
Superior	167
AC Sampson	168
Platinum	169

Varieties

Cultivar	fhb index		DON	
	2 year	1 year	2 year	1 year
25W60	41	51.1	21.9	26.8
Webster	25.8	30	9.5	11.7
Wisdom	18.6	18.4	5.6	7.2
Vienna	15.5	21.9	7.7	10.1
Wonder	7.2	6.8	3.5	4.5

Fusarium Genetics!!

	FHB index	DON
Hi x Hi	32.7	7.28
Pro202SRW		
Hi x Low		
Sisson	31.3	2.51
CM98091	25.0	1.87
Low x Hi		
25R23	17.9	7.21
Low x Low		
Vienna	6.0	0.56
OTH 017:033	7.6	0.52

Fusarium Management in Ontario

Peter Johnson, Cereal Specialist, Ontario Ministry of Agriculture and Food, 581 Huron St.
Stratford, ON N5A 5T8 E-mail: peter.johnson@omaf.gov.on.ca

Harvest...

- *EARLY!!*
- *High moistures and dry*
- *FAN SPEED!!!!*

Effect of Different Fan-Speeds on Wheat Yield

	Fan Speed (rpm)			
	1,160	1,220	1,280	1,330
	Sieve Setting: (1/4")			
Good kernels on ground: (per ft²)	16	31.6	35.2	43.6
Loss: (bu/ac)	0.83	1.58	1.76	2.18
Loss at 60 bu yield: %	1.38	2.63	2.93	3.63

Case International 1644, Harus Wheat, Essex County, July 17, 1996.
Travel speed 4.2 mph. Rotor speed 880 rpm.
Source: Dr. Art Schaatsma, University of Guelph, Ridgetown College, 1996.