

INSTITUTIONAL DATA
IN SUPPORT OF THE RESOURCE ALLOCATION PROCESS 2008-09

Prepared by
Office of Institutional Analysis

November 30, 2007

INSTITUTIONAL DATA

IN SUPPORT OF THE RESOURCE ALLOCATION PROCESS, 2008-09

Office of Institutional Analysis

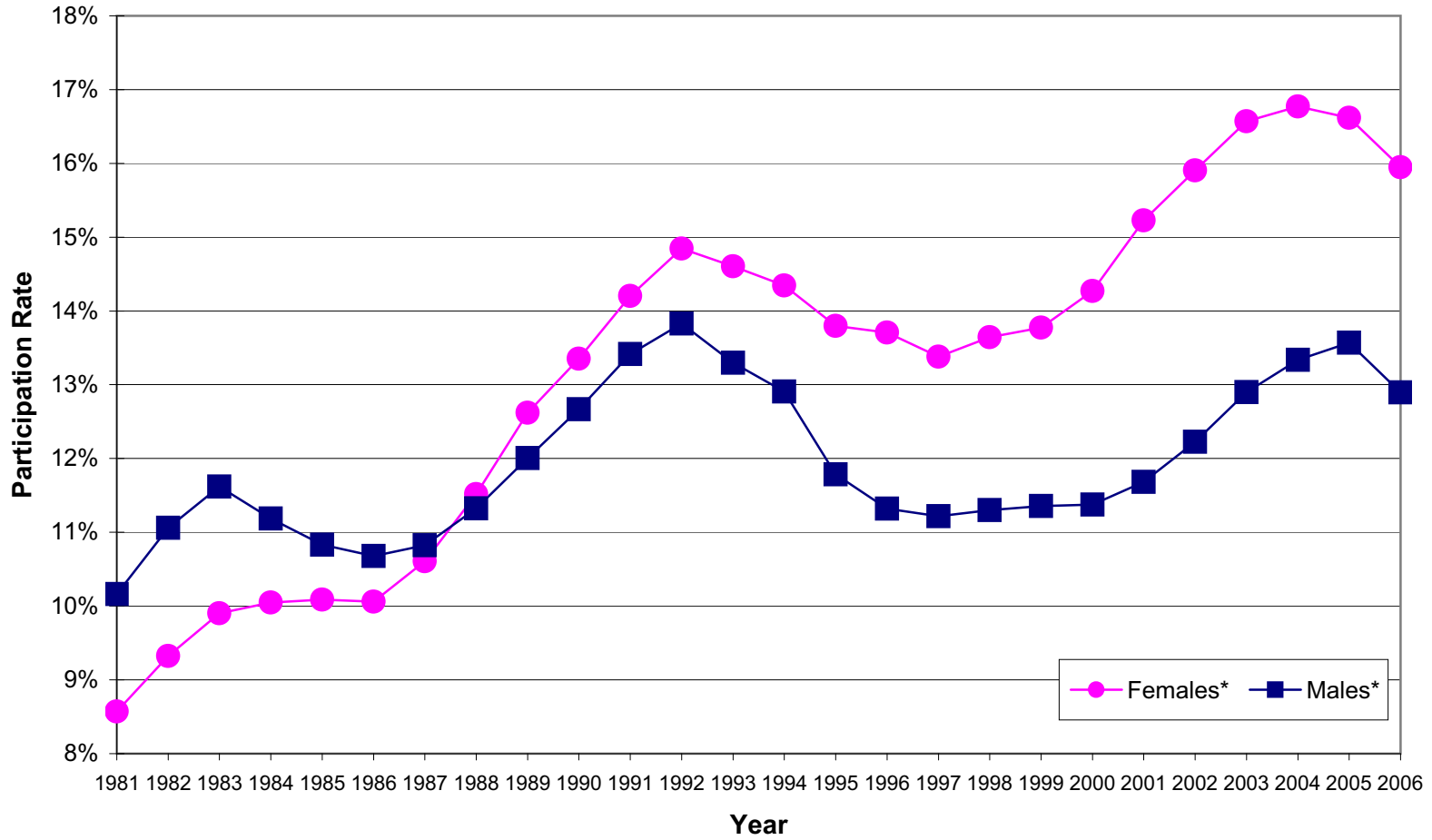
TABLE OF CONTENTS

Table #	Table Name	Page #
Demographics		
1.	Participation of Males and Females at the University of Manitoba, 1981-2006	3
2.	Province of Manitoba Grade 11 Enrolment, Grade 12 Graduates and Sequential Enrolment at the University of Manitoba, 1994 to 2006	4
Student Data		
3.	Undergraduate and Graduate Enrolment by Faculty/School, Full and Part-time, Fall Term 2006 and 2007	5
4.	Student Enrolment Report, by Faculty/School, Full and Part-time, Fall Term 2006 and 2007	7
5.	Undergraduate Students, by Program or Area of Study, and Year Fall 2007	20
6.	Faculty of Graduate Studies Enrolment, Ph.D. and Masters Students by Department, Fall 2007	29
7.	A Profile of Canadian Aboriginal Students at The University of Manitoba, Fall 2006 and 2007	33
8.	Historical Comparison of Undergraduate Student Credit Hours, Taught by Faculties, Schools and Departments, Fall Term 2006 and 2007	34
9.	Undergraduate Student Credit Hours, Taught to, Taught by Matrix, Fall Term 2007	36
10.	Analysis of Undergraduate Student Credit Hours, by Course Level, by Faculty/School, Fall Term 2007	37
11.	Distribution of International Students, by Faculty/School, Undergraduate and Graduate, Full-time and Part-time, Fall Term 2006 and 2007	39

TABLE OF CONTENTS

Table #	Table Name	Page #
12.	Degrees, Diplomas and Certificates Conferred by Faculty/School, Undergraduate and Graduate, 2003 to 2007	41
13.	Undergraduate Average Program Cost – 3-year average: 2003-2004 to 2005-2006, Excludes Amortization of Capital Assets	42
14.	Graduate Total Cost Per FTE Student – 2004-2005 to 2005-2006, Excludes Amortization of Capital Assets	43
15.	Rebated Tuition Fees as a Percentage of Total Program Costs, by Faculty/School 2005-2006	46
 Staff and Financial		
16.	Full-Time Equivalent Academic and Support Staff Baseline Positions, by Faculty/School, Operating Funds (as at April 1), 2007-2008 and 2006-2007	47
17.	Full-Time Equivalent (FTE) Academic and Support Staff Baseline Positions, by type of position, Operating Funds (as at April 1), Summary Report, 2006-2007 and 2007-2008	49
18.	Ratio of Undergraduate Students to Staff – U of M and Ontario Methodologies, by Faculty/School and Department, 2006-2007	50
19.	Ratio of Graduate Standard Students to FTE Academic Staff, 2006-2007	53
 Research		
20.	Research Revenues from External Sources per Full-Time Equivalent Staff, by Faculty/School/Unit, 2004-2007	54
21.	Canadian Foundation for Innovation and Manitoba Innovation Fund Awards, by Faculty/School/Unit, 2005 to 2007	55

PARTICIPATION OF MALES AND FEMALES AT THE UNIVERSITY OF MANITOBA



**Participation Rates for 18-24 year olds in Manitoba, by sex, 1981-2006.
 In the period 1981-1987, more men than women attended U of M. Since 1988, more women than men have enrolled.*

**PROVINCE OF MANITOBA GRADE 11 ENROLMENT, GRADE 12 GRADUATES
AND SEQUENTIAL ENROLMENT AT THE UNIVERSITY OF MANITOBA**

<u>Province of Manitoba Grade 11 Enrolment</u> ¹		<u>Province of Manitoba Grade 12 Graduates</u> ²			<u>Grade 12 Graduates Enrolled at the U. of M.</u> ³			
Year (Sept)	Grade 11 Enrolment	Year (June)	Grade 12 Graduates	% Grade 11 Enrolment	Year (Nov.1)	Sequential Students	% Grade 12 Graduates	% Grade 11 Enrolment
1992	15,494	1994	11,270	72.7%	1994	2,443	21.7%	15.8%
1993	15,062	1995	11,074	73.5%	1995	2,087	18.8%	13.9%
1994	14,844	1996	10,993	74.1%	1996	2,161	19.7%	14.6%
1995	14,723	1997	11,138	75.7%	1997	2,117	19.0%	14.4%
1996	14,653	1998	11,181	76.3%	1998	2,256	20.2%	15.4%
1997	15,053	1999	11,026	73.2%	1999	2,289	20.8%	15.2%
1998	15,252	2000	11,428	74.9%	2000	2,403	21.0%	15.8%
1999	15,313	2001	11,488	75.0%	2001	2,529	22.0%	16.5%
2000	15,699	2002	11,489	73.2%	2002	2,562	22.3%	16.3%
2001	15,342	2003	11,962	78.0%	2003	2,699	22.6%	17.6%
2002	15,438	2004	12,274	79.5%	2004	2,695	22.0%	17.5%
2003	15,174	2005	12,096	79.7%	2005	2,683	22.2%	17.7%
2004	15,313	2006	12,135	79.2%	2006	2,645	21.8%	17.3%

1. Includes public and private schools.

Source: Manitoba Education, Citizenship and Youth, Schools' Finance Branch; Enrolment Report.

2. Includes public and private schools. Excludes mature graduates (age 21 & over) prior to 2002 and Adult Learning Centres graduates from 2002 onward.

Source: Manitoba Education, Citizenship and Youth.

3. Includes full and part-time students first admitted to the university in a direct entry program. Sequential students enter university directly from high school. In 1987 and 1988, 24.6% of the Grade 12 graduates enrolled as sequential students, the highest level experienced to date.

Data as at November 1st from 1995 onward. Previous years as at December 1st.

Source: Office of Institutional Analysis, The University of Manitoba.

**Undergraduate and Graduate Enrolment
Faculty/School, Full and Part-time Status: Fall Term 2006 and 2007**

Faculty/School	Fall 2007			Fall 2006			% CHANGE
	FULL	PART	TOTAL	FULL	PART	TOTAL	
AGRICULTURAL AND FOOD SCIENCES							
Undergraduate	372	23	395	362	24	386	2.3
Graduate	209	13	222	210	11	221	0.5
Total Faculty/School	581	36	617	572	35	607	1.6
ARCHITECTURE							
Undergraduate	273	19	292	292	24	316	-7.6
Graduate	231	5	236	268	11	279	-15.4
Total Faculty/School	504	24	528	560	35	595	-11.3
ART, SCHOOL OF							
Undergraduate	319	91	410	343	91	434	-5.5
Total Faculty/School	319	91	410	343	91	434	-5.5
ARTS							
Undergraduate	2725	824	3549	3052	946	3998	-11.2
Graduate	455	69	524	482	41	523	0.2
Total Faculty/School	3180	893	4073	3534	987	4521	-9.9
BUSINESS, ASPER SCHOOL OF							
Undergraduate	1422	108	1530	1364	109	1473	3.9
Graduate	104	70	174	43	83	126	38.1
Total Faculty/School	1526	178	1704	1407	192	1599	6.6
DENTAL HYGIENE							
Undergraduate	53	0	53	53	0	53	0.0
Total Faculty/School	53	0	53	53	0	53	0.0
DENTISTRY							
Undergraduate	137	0	137	136	0	136	0.7
Graduate	24	0	24	24	0	24	0.0
Total Faculty/School	161	0	161	160	0	160	0.6
EDUCATION^{1,2}							
Undergraduate	578	417	995	582	387	969	2.7
Graduate	101	302	403	64	292	356	13.2
Total Faculty/School	679	719	1398	646	679	1325	5.5
ENGINEERING							
Undergraduate	1094	104	1198	946	140	1086	10.3
Graduate	275	39	314	287	36	323	-2.8
Total Faculty/School	1369	143	1512	1233	176	1409	7.3
ENVIRONMENT, EARTH, AND RESOURCES CLAYTON H. RIDDELL, FACULTY OF							
Undergraduate	322	90	412	319	90	409	0.7
Graduate	183	26	209	159	20	179	16.8
Total Faculty/School	505	116	621	478	110	588	5.6
EXTENDED EDUCATION							
Undergraduate	393	787	1180	438	860	1298	-9.1
Total Faculty/School	393	787	1180	438	860	1298	-9.1
GRADUATE STUDIES							
Total Faculty/School	55	14	69	49	10	59	16.9
HUMAN ECOLOGY¹							
Undergraduate	430	46	476	435	39	474	0.4
Graduate	31	6	37	30	7	37	0.0
Total Faculty/School	461	52	513	465	46	511	0.4
KINESIOLOGY & RECREATION MANAGEMENT³							
Undergraduate	341	62	403	344	47	391	3.1
Graduate	20	9	29	24	10	34	-14.7
Total Faculty/School	361	71	432	368	57	425	1.6
LAW							
Undergraduate	288	4	292	290	5	295	-1.0
Graduate	3	0	3	4	0	4	-25.0
Total Faculty/School	291	4	295	294	5	299	-1.3
MEDICAL REHABILITATION							
Undergraduate	190	3	193	191	3	194	-0.5
Graduate	121	17	138	119	16	135	2.2
Total Faculty/School	311	20	331	310	19	329	0.6

Faculty/School	Fall 2007			Fall 2006			% CHANGE	
	FULL	PART	TOTAL	FULL	PART	TOTAL		
MEDICINE								
Undergraduate	487	0	487	464	0	464	5.0	
Graduate	257	41	298	254	52	306	-2.6	
Total Faculty/School	744	41	785	718	52	770	1.9	
MUSIC²								
Undergraduate	191	22	213	196	17	213	0.0	
Graduate	7	7	14	15	5	20	-30.0	
Total Faculty/School	198	29	227	211	22	233	-2.6	
NURSING								
Undergraduate ⁴	930	219	1149	842	328	1170	-1.8	
Graduate	40	52	92	29	62	91	1.1	
Total Faculty/School	970	271	1241	871	390	1261	-1.6	
PHARMACY								
Undergraduate	178	17	195	172	20	192	1.6	
Graduate	11	2	13	13	2	15	-13.3	
Total Faculty/School	189	19	208	185	22	207	0.5	
SCIENCE								
Undergraduate	2398	400	2798	2400	602	3002	-6.8	
Graduate	265	13	278	289	10	299	-7.0	
Total Faculty/School	2663	413	3076	2689	612	3301	-6.8	
SOCIAL WORK								
Undergraduate	394	274	668	382	251	633	5.5	
Graduate	95	118	213	100	105	205	3.9	
Total Faculty/School	489	392	881	482	356	838	5.1	
UNIVERSITY 1⁵								
Undergraduate	5270	767	6037	4891	774	5665	6.6	
Total Faculty/School	5270	767	6037	4891	774	5665	6.6	
SUMMARY								
Undergraduate	18785	4277	23062	18494	4757	23251	-0.8	
Graduate	2487	803	3290	2463	773	3236	1.7	
Undergraduate and graduate totals			26352				26487	-0.5
Post-Graduate Medical Education (P.G.M.E.)			480				444	8.1
TOTALS			26832				26931	-0.4

1. Students who are enrolled in the integrated B.Hum.Ecol./B.Educ. Program are shown in the Faculty of Human Ecology for years 3 and 4 and in Education for year 5.

2. Enrolment in the integrated B.Music/B.Ed. Program is shown in Music for years 3 & 4 and in Education for year 5.

3. Kinesiology and Recreation Management previously reported as Physical Education and Recreation Studies.

4. Students entering the baccalaureate nursing program may take courses at alternate sites. Enrolments shown in this table reflect students taking U of M courses only.

5. University 1 program introduced in 1998-1999. Most "new" students, with limited or no university experience, have registered under this program. Students have to complete 24-30 credit hours under University 1 before moving into a degree program.

The University of Manitoba Student Enrolment Report Fall Term - as at November 1st

	FALL 2007									FALL 2006									%Chg
	FULL			PART			TOTAL			FULL			PART			TOTAL			
	Female	Male	Total	Female	Male	Total	Female	Male	Total	Female	Male	Total	Female	Male	Total	Female	Male	Total	
AGRICULTURAL & FOOD SCIENCES																			
UNDERGRADUATE																			
B.Sc.	53	44	97	4	3	7	57	47	104	48	46	94	2	1	3	50	47	97	
B.Sc. (Agribusiness)	38	71	109	0	7	7	38	78	116	33	70	103	1	9	10	34	79	113	
B.Sc. (Agroecology)	6	4	10	1	0	1	7	4	11	6	7	13	0	0	0	6	7	13	
B.Sc. (Food Science)	29	13	42	2	1	3	31	14	45	26	16	42	5	2	7	31	18	49	
Pre-Veterinary	1	1	2	0	0	0	1	1	2	6	3	9	0	1	1	6	4	10	
Diploma	16	77	93	2	2	4	18	79	97	15	79	94	0	3	3	15	82	97	
Int'l Educ. Agrologist Program (IEAP) ¹	6	6	12	0	1	1	6	7	13	0	0	0	0	0	0	0	0	0	
Special or Visiting	5	2	7	0	0	0	5	2	7	6	1	7	0	0	0	6	1	7	
SUBTOTAL	154	218	372	9	14	23	163	232	395	140	222	362	8	16	24	148	238	386	2.3%
GRADUATE																			
Pre-Masters	2	0	2	0	1	1	2	1	3	1	1	2	0	1	1	1	2	3	
Masters	79	54	133	2	5	7	81	59	140	80	61	141	1	4	5	81	65	146	
Ph.D.	18	56	74	3	1	4	21	57	78	14	53	67	3	2	5	17	55	72	
Occasional or Visiting Student	0	0	0	0	1	1	0	1	1	0	0	0	0	0	0	0	0	0	
SUBTOTAL	99	110	209	5	8	13	104	118	222	95	115	210	4	7	11	99	122	221	0.5%
TOTAL FACULTY/SCHOOL	253	328	581	14	22	36	267	350	617	235	337	572	12	23	35	247	360	607	1.6%
ARCHITECTURE																			
UNDERGRADUATE																			
B.E.D.	148	125	273	11	8	19	159	133	292	163	123	286	15	9	24	178	132	310	
Special or Visiting	0	0	0	0	0	0	0	0	0	6	0	6	0	0	0	6	0	6	
SUBTOTAL	148	125	273	11	8	19	159	133	292	169	123	292	15	9	24	184	132	316	-7.6%
GRADUATE																			
Pre-Masters	14	10	24	0	0	0	14	10	24	17	13	30	1	0	1	18	13	31	
Masters	127	79	206	0	4	4	127	83	210	134	104	238	4	6	10	138	110	248	
Occasional or Visiting Student	0	1	1	0	1	1	0	2	2	0	0	0	0	0	0	0	0	0	
SUBTOTAL	141	90	231	0	5	5	141	95	236	151	117	268	5	6	11	156	123	279	-15.4%
TOTAL FACULTY/SCHOOL	289	215	504	11	13	24	300	228	528	320	240	560	20	15	35	340	255	595	-11.3%

ART, SCHOOL OF UNDERGRADUATE	FALL 2007									FALL 2006									%Chg
	FULL			PART			TOTAL			FULL			PART			TOTAL			
	Female	Male	Total	Female	Male	Total	Female	Male	Total	Female	Male	Total	Female	Male	Total	Female	Male	Total	
B.F.A.	163	55	218	45	16	61	208	71	279	164	72	236	43	15	58	207	87	294	
B.F.A. (Hons.)	44	32	76	9	4	13	53	36	89	45	22	67	13	4	17	58	26	84	
B.F.A. Art History	7	0	7	2	1	3	9	1	10	10	0	10	5	0	5	15	0	15	
B.F.A. Art History (Hons.)	1	1	2	1	0	1	2	1	3	1	0	1	0	1	1	1	1	2	
Diploma	11	4	15	6	5	11	17	9	26	17	11	28	3	3	6	20	14	34	
Special or Visiting	1	0	1	0	2	2	1	2	3	0	1	1	2	2	4	2	3	5	
SUBTOTAL	227	92	319	63	28	91	290	120	410	237	106	343	66	25	91	303	131	434	-5.5%
TOTAL FACULTY/SCHOOL	227	92	319	63	28	91	290	120	410	237	106	343	66	25	91	303	131	434	-5.5%
ARTS																			
UNDERGRADUATE																			
B. Arts	1238	994	2232	410	326	736	1648	1320	2968	1397	1175	2572	453	371	824	1850	1546	3396	
B. Arts (Advanced)	149	81	230	24	18	42	173	99	272	125	77	202	30	19	49	155	96	251	
B. Arts (Honours)	130	84	214	16	12	28	146	96	242	125	88	213	13	13	26	138	101	239	
Special or Visiting	14	10	24	3	8	11	17	18	35	28	14	42	17	14	31	45	28	73	
St. Boniface ²	23	2	25	7	0	7	30	2	32	17	6	23	14	2	16	31	8	39	
SUBTOTAL	1554	1171	2725	460	364	824	2014	1535	3549	1692	1360	3052	527	419	946	2219	1779	3998	-11.2%
GRADUATE																			
Pre-Masters	6	15	21	9	6	15	15	21	36	16	20	36	9	2	11	25	22	47	
Joint Masters ³	28	33	61	11	10	21	39	43	82	32	42	74	3	3	6	35	45	80	
Masters	142	72	214	12	8	20	154	80	234	147	74	221	11	5	16	158	79	237	
Masters - St. Boniface ²	8	5	13	0	0	0	8	5	13	6	4	10	0	0	0	6	4	10	
Ph.D.	92	52	144	3	1	4	95	53	148	78	55	133	1	1	2	79	56	135	
Occasional or Visiting Student	0	2	2	7	2	9	7	4	11	6	2	8	4	2	6	10	4	14	
SUBTOTAL	276	179	455	42	27	69	318	206	524	285	197	482	28	13	41	313	210	523	0.2%
TOTAL FACULTY/SCHOOL	1830	1350	3180	502	391	893	2332	1741	4073	1977	1557	3534	555	432	987	2532	1989	4521	-9.9%

	FALL 2007									FALL 2006									%Chg
	FULL			PART			TOTAL			FULL			PART			TOTAL			
	Female	Male	Total	Female	Male	Total	Female	Male	Total	Female	Male	Total	Female	Male	Total	Female	Male	Total	
BUSINESS, ASPER SCHOOL OF																			
UNDERGRADUATE																			
B. Comm. Hons	588	739	1327	32	62	94	620	801	1421	559	712	1271	43	52	95	602	764	1366	
B. Comm. Hons - ACC ⁴ Joint program	0	2	2	0	0	0	0	2	2	0	2	2	1	0	1	1	2	3	
B. Comm. Hons - ÉTP ⁴ Joint program	1	1	2	0	0	0	1	1	2	0	1	1	0	0	0	0	1	1	
B. Comm. Hons - RRC ⁴ Joint program	20	33	53	7	4	11	27	37	64	19	34	53	5	5	10	24	39	63	
Advanced Diploma - Actuarial Studies	0	0	0	0	0	0	0	0	0	0	0	0	1	1	1	0	1	1	
Special or Visiting	17	10	27	0	1	1	17	11	28	15	21	36	1	0	1	16	21	37	
St. Boniface ²	8	3	11	0	2	2	8	5	13	0	1	1	1	0	1	1	1	2	
SUBTOTAL	634	788	1422	39	69	108	673	857	1530	593	771	1364	51	58	109	644	829	1473	3.9%
GRADUATE																			
Pre-Masters	0	0	0	0	0	0	0	0	0	0	0	0	0	0	0	0	0	0	
Masters	36	47	83	26	41	67	62	88	150	13	13	26	28	54	82	41	67	108	
Ph.D.	13	8	21	0	0	0	13	8	21	11	6	17	0	0	0	11	6	17	
Occasional or Visiting Student	0	0	0	1	2	3	1	2	3	0	0	0	1	0	1	1	0	1	
SUBTOTAL	49	55	104	27	43	70	76	98	174	24	19	43	29	54	83	53	73	126	38.1%
TOTAL FACULTY/SCHOOL	683	843	1526	66	112	178	749	955	1704	617	790	1407	80	112	192	697	902	1599	6.6%
DENTAL HYGIENE																			
UNDERGRADUATE																			
Diploma in Dental Hygiene	51	2	53	0	0	0	51	2	53	50	3	53	0	0	0	50	3	53	
Special or Visiting	0	0	0	0	0	0	0	0	0	0	0	0	0	0	0	0	0	0	
SUBTOTAL	51	2	53	0	0	0	51	2	53	50	3	53	0	0	0	50	3	53	0.0%
TOTAL FACULTY/SCHOOL	51	2	53	0	0	0	51	2	53	50	3	53	0	0	0	50	3	53	0.0%
DENTISTRY																			
UNDERGRADUATE																			
Doctor of Dental Medicine (D.M.D.)	53	63	116	0	0	0	53	63	116	52	65	117	0	0	0	52	65	117	
International Dentistry Degree (IDDP)	6	5	11	0	0	0	6	5	11	5	7	12	0	0	0	5	7	12	
B.Sc. (Dentistry) ⁵	5	5	10	0	0	0	5	5	10	3	4	7	0	0	0	3	4	7	
Special or Visiting	0	0	0	0	0	0	0	0	0	0	0	0	0	0	0	0	0	0	
SUBTOTAL	64	73	137	0	0	0	64	73	137	60	76	136	0	0	0	60	76	136	0.7%

	FALL 2007									FALL 2006									%Chg
	FULL			PART			TOTAL			FULL			PART			TOTAL			
	Female	Male	Total	Female	Male	Total	Female	Male	Total	Female	Male	Total	Female	Male	Total	Female	Male	Total	
DENTISTRY (continued)																			
GRADUATE																			
Pre-Masters	0	0	0	0	0	0	0	0	0	0	0	0	0	0	0	0	0	0	0
Masters	12	11	23	0	0	0	12	11	23	6	18	24	0	0	0	6	18	24	
Ph.D.	0	1	1	0	0	0	0	1	1	0	0	0	0	0	0	0	0	0	
Occasional or Visiting Student	0	0	0	0	0	0	0	0	0	0	0	0	0	0	0	0	0	0	
SUBTOTAL	12	12	24	0	0	0	12	12	24	6	18	24	0	0	0	6	18	24	0.0%
TOTAL FACULTY/SCHOOL	76	85	161	0	0	0	76	85	161	66	94	160	0	0	0	66	94	160	0.6%
EDUCATION																			
UNDERGRADUATE																			
B.Ed. (Early Years)	101	23	124	3	0	3	104	23	127	98	26	124	3	1	4	101	27	128	
B.Ed. (Middle Years)	72	55	127	1	3	4	73	58	131	68	49	117	0	3	3	68	52	120	
B.Ed. (Senior Years)	130	103	233	7	4	11	137	107	244	137	114	251	6	6	12	143	120	263	
B.Ed. (Middle Years) Weekend College	23	8	31	0	0	0	23	8	31	25	12	37	0	1	1	25	13	38	
B.H.Ecology/B.Ed. ⁶ - Year 5	7	0	7	0	0	0	7	0	7	3	0	3	0	0	0	3	0	3	
B.Music/B.Ed. ⁷ - Year 5	15	2	17	1	0	1	16	2	18	16	6	22	1	0	1	17	6	23	
Post-Baccalaureate Certificate in Educ.	1	0	1	13	4	17	14	4	18	0	0	0	15	2	17	15	2	17	
Post-Baccalaureate Diploma in Educ.	21	5	26	296	71	367	317	76	393	17	3	20	283	59	342	300	62	362	
Internationally Educated Teachers (IET) ⁸	6	4	10	1	0	1	7	4	11	7	1	8	0	0	0	7	1	8	
Special or Visiting	0	0	0	0	0	0	0	0	0	0	0	0	0	0	0	0	0	0	
St. Boniface ²	2	0	2	11	2	13	13	2	15	0	0	0	7	0	7	7	0	7	
SUBTOTAL	378	200	578	333	84	417	711	284	995	371	211	582	315	72	387	686	283	969	2.7%
GRADUATE																			
Pre-Masters	0	0	0	0	0	0	0	0	0	0	0	0	0	0	0	0	0	0	
Masters	41	9	50	171	79	250	212	88	300	35	12	47	169	87	256	204	99	303	
Ph.D.	20	11	31	13	2	15	33	13	46	12	4	16	11	3	14	23	7	30	
Occasional or Visiting Student	1	0	1	1	0	1	2	0	2	0	0	0	0	0	0	0	0	0	
Pre-Masters - St. Boniface ²	0	0	0	1	0	1	1	0	1	0	0	0	1	0	1	1	0	1	
Masters - St. Boniface ²	14	5	19	22	13	35	36	18	54	1	0	1	10	11	21	11	11	22	
SUBTOTAL	76	25	101	208	94	302	284	119	403	48	16	64	191	101	292	239	117	356	13.2%
TOTAL FACULTY/SCHOOL	454	225	679	541	178	719	995	403	1398	419	227	646	506	173	679	925	400	1325	5.5%

	FALL 2007									FALL 2006									%Chg
	FULL			PART			TOTAL			FULL			PART			TOTAL			
	Female	Male	Total	Female	Male	Total	Female	Male	Total	Female	Male	Total	Female	Male	Total	Female	Male	Total	
ENGINEERING																			
UNDERGRADUATE																			
B.Sc. in Engineering (Biosystems)	25	44	69	1	6	7	26	50	76	22	43	65	2	4	6	24	47	71	
B.Sc. in Engineering (Civil)	39	197	236	3	13	16	42	210	252	36	151	187	3	18	21	39	169	208	
B.Sc. in Engineering (Computer)	9	86	95	1	7	8	10	93	103	8	80	88	0	15	15	8	95	103	
B.Sc. in Engineering (Electrical)	17	126	143	0	13	13	17	139	156	13	119	132	2	17	19	15	136	151	
B.Sc. in Engineering (Manufacturing)	3	24	27	0	2	2	3	26	29	3	18	21	1	0	1	4	18	22	
B.Sc. in Engineering (Mechanical)	23	292	315	3	22	25	26	314	340	32	234	266	0	32	32	32	266	298	
B.Sc. in Engineering - Undeclared	30	161	191	6	20	26	36	181	217	20	155	175	5	35	40	25	190	215	
Int'l Educ. Engineers Qualification (IEEQ) ⁹	1	6	7	2	2	4	3	8	11	1	4	5	0	4	4	1	8	9	
Special or Visiting	1	10	11	0	3	3	1	13	14	0	7	7	0	2	2	0	9	9	
SUBTOTAL	148	946	1094	16	88	104	164	1034	1198	135	811	946	13	127	140	148	938	1086	10.3%
GRADUATE																			
Pre-Masters	0	0	0	0	0	0	0	0	0	0	0	0	0	0	0	0	0	0	
Masters	23	108	131	4	21	25	27	129	156	37	110	147	4	19	23	41	129	170	
Ph.D.	20	124	144	2	9	11	22	133	155	17	122	139	2	7	9	19	129	148	
Occasional or Visiting Student	0	0	0	0	3	3	0	3	3	0	1	1	1	3	4	1	4	5	
SUBTOTAL	43	232	275	6	33	39	49	265	314	54	233	287	7	29	36	61	262	323	-2.8%
TOTAL FACULTY/SCHOOL	191	1178	1369	22	121	143	213	1299	1512	189	1044	1233	20	156	176	209	1200	1409	7.3%
ENVIRONMENT, EARTH, AND RESOURCES, CLAYTON H. RIDDELL FACULTY OF																			
UNDERGRADUATE																			
General	40	34	74	11	16	27	51	50	101	69	51	120	17	20	37	86	71	157	
Advanced	1	5	6	1	0	1	2	5	7	2	6	8	1	1	2	3	7	10	
Major	89	121	210	12	19	31	101	140	241	70	92	162	14	15	29	84	107	191	
Honours	15	13	28	5	0	5	20	13	33	18	5	23	3	1	4	21	6	27	
Undeclared	0	0	0	0	0	0	0	0	0	0	0	0	13	3	16	13	3	16	
Special or Visiting	1	3	4	22	4	26	23	7	30	4	2	6	0	2	2	4	4	8	
SUBTOTAL	146	176	322	51	39	90	197	215	412	163	156	319	48	42	90	211	198	409	0.7%
GRADUATE																			
Pre-Masters	0	0	0	0	0	0	0	0	0	0	0	0	0	0	0	0	0	0	
Masters	71	54	125	13	9	22	84	63	147	57	51	108	12	7	19	69	58	127	
Ph.D.	22	36	58	0	1	1	22	37	59	16	35	51	0	1	1	16	36	52	
Occasional or Visiting Student	0	0	0	3	0	3	3	0	3	0	0	0	0	0	0	0	0	0	
SUBTOTAL	93	90	183	16	10	26	109	100	209	73	86	159	12	8	20	85	94	179	16.8%
TOTAL FACULTY/SCHOOL	239	266	505	67	49	116	306	315	621	236	242	478	60	50	110	296	292	588	5.6%

	FALL 2007									FALL 2006									%Chg
	FULL			PART			TOTAL			FULL			PART			TOTAL			
	Female	Male	Total	Female	Male	Total	Female	Male	Total	Female	Male	Total	Female	Male	Total	Female	Male	Total	
EXTENDED EDUCATION																			
UNDERGRADUATE																			
Aboriginal Focus Diploma																			
Aboriginal Child & Family Services	12	1	13	4	0	4	16	1	17	25	1	26	5	1	6	30	2	32	
First Nation Community Wellness	8	3	11	12	3	15	20	6	26	9	2	11	11	3	14	20	5	25	
General Studies																			
Auditing, Special or Visiting	205	164	369	512	232	744	717	396	1113	229	171	400	589	234	823	818	405	1223	-9.0%
Other																			
First Nation Health	0	0	0	12	2	14	12	2	14	0	0	0	12	3	15	12	3	15	
Labour Relations & Workplace St.	0	0	0	0	3	3	0	3	3	0	0	0	1	1	2	1	1	2	
St. Boniface ²	0	0	0	5	2	7	5	2	7	1	0	1	0	0	0	1	0	1	
SUBTOTAL	225	168	393	545	242	787	770	410	1180	264	174	438	618	242	860	882	416	1298	-9.1%
TOTAL FACULTY/SCHOOL	225	168	393	545	242	787	770	410	1180	264	174	438	618	242	860	882	416	1298	-9.1%
GRADUATE STUDIES																			
Masters																			
Interdisciplinary	0	0	0	0	0	0	0	0	0	0	0	0	1	0	1	1	0	1	
Disability Studies	7	5	12	7	1	8	14	6	20	12	5	17	6	1	7	18	6	24	
Ph.D.																			
Applied Health Sciences ¹⁰	7	0	7	1	0	1	8	0	8	0	0	0	0	0	0	0	0	0	
Cancer Control	1	0	1	0	0	0	1	0	1	1	0	1	0	0	0	1	0	1	
Food & Nutritional Sciences	8	4	12	1	0	1	9	4	13	8	5	13	1	0	1	9	5	14	
Interdisciplinary	8	1	9	1	1	2	9	2	11	9	2	11	0	1	1	9	3	12	
Peace & Conflict Studies	10	4	14	0	0	0	10	4	14	5	2	7	0	0	0	5	2	7	
Occasional or Visiting Student	0	0	0	2	0	2	2	0	2	0	0	0	0	0	0	0	0	0	
SUBTOTAL	41	14	55	12	2	14	53	16	69	35	14	49	8	2	10	43	16	59	16.9%
TOTAL FACULTY/SCHOOL	41	14	55	12	2	14	53	16	69	35	14	49	8	2	10	43	16	59	16.9%

	FALL 2007									FALL 2006									%Chg
	FULL			PART			TOTAL			FULL			PART			TOTAL			
	Female	Male	Total	Female	Male	Total	Female	Male	Total	Female	Male	Total	Female	Male	Total	Female	Male	Total	
HUMAN ECOLOGY																			
UNDERGRADUATE																			
B. Health Sciences ¹¹	3	1	4	0	0	0	3	1	4	0	0	0	0	0	0	0	0	0	0
B. Health Studies ¹¹	3	0	3	0	0	0	3	0	3	0	0	0	0	0	0	0	0	0	0
B. Human Ecology ¹²	150	9	159	11	1	12	161	10	171	168	10	178	15	0	15	183	10	193	
B. Sc. (Human Nutritional Sci.)	218	15	233	22	3	25	240	18	258	213	11	224	18	4	22	231	15	246	
B. Sc. (Textile Sci.)	28	0	28	1	0	1	29	0	29	22	0	22	2	0	2	24	0	24	
B.H. Ecology/B.Ed. ⁶	2	0	2	1	0	1	3	0	3	10	0	10	0	0	0	10	0	10	
Special or Visiting	0	1	1	7	0	7	7	1	8	1	0	1	0	0	0	1	0	1	
SUBTOTAL	404	26	430	42	4	46	446	30	476	414	21	435	35	4	39	449	25	474	0.4%
GRADUATE																			
Pre-Masters	1	0	1	0	0	0	1	0	1	1	0	1	2	0	2	3	0	3	
Masters	28	2	30	6	0	6	34	2	36	25	4	29	4	0	4	29	4	33	
Occasional or Visiting Student	0	0	0	0	0	0	0	0	0	0	0	0	1	0	1	1	0	1	
SUBTOTAL	29	2	31	6	0	6	35	2	37	26	4	30	7	0	7	33	4	37	0.0%
TOTAL FACULTY/SCHOOL	433	28	461	48	4	52	481	32	513	440	25	465	42	4	46	482	29	511	0.4%
KINESIOLOGY and RECREATION MANAGEMENT¹³																			
UNDERGRADUATE																			
B. Physical Education	54	59	113	7	13	20	61	72	133	50	71	121	4	11	15	54	82	136	
B. Kinesiology	90	75	165	4	6	10	94	81	175	85	69	154	8	4	12	93	73	166	
B. Rec. Mgmt. & Community Development	40	23	63	20	12	32	60	35	95	41	26	67	13	7	20	54	33	87	
Special or Visiting	0	0	0	0	0	0	0	0	0	2	0	2	0	0	0	2	0	2	
SUBTOTAL	184	157	341	31	31	62	215	188	403	178	166	344	25	22	47	203	188	391	3.1%
GRADUATE																			
Pre-Masters	0	0	0	1	0	1	1	0	1	1	0	1	0	0	0	1	0	1	
Masters	9	11	20	2	6	8	11	17	28	11	12	23	3	5	8	14	17	31	
Occasional or Visiting Student	0	0	0	0	0	0	0	0	0	0	0	0	2	0	2	2	0	2	
SUBTOTAL	9	11	20	3	6	9	12	17	29	12	12	24	5	5	10	17	17	34	-14.7%
TOTAL FACULTY/SCHOOL	193	168	361	34	37	71	227	205	432	190	178	368	30	27	57	220	205	425	1.6%

	FALL 2007									FALL 2006									%Chg
	FULL			PART			TOTAL			FULL			PART			TOTAL			
	Female	Male	Total	Female	Male	Total	Female	Male	Total	Female	Male	Total	Female	Male	Total	Female	Male	Total	
LAW																			
UNDERGRADUATE																			
Bachelor of Laws (L.L.B.)	124	143	267	0	1	1	124	144	268	133	139	272	0	0	0	133	139	272	
Bachelor of Laws (L.L.B.) - Half-time	9	4	13	1	1	2	10	5	15	8	8	16	4	1	5	12	9	21	
Special or Visiting	5	3	8	0	1	1	5	4	9	1	1	2	0	0	0	1	1	2	
SUBTOTAL	138	150	288	1	3	4	139	153	292	142	148	290	4	1	5	146	149	295	-1.0%
GRADUATE																			
Masters	2	1	3	0	0	0	2	1	3	3	1	4	0	0	0	3	1	4	
Occasional or Visiting Student	0	0	0	0	0	0	0	0	0	0	0	0	0	0	0	0	0	0	
SUBTOTAL	2	1	3	0	0	0	2	1	3	3	1	4	0	0	0	3	1	4	-25.0%
TOTAL FACULTY/SCHOOL	140	151	291	1	3	4	141	154	295	145	149	294	4	1	5	149	150	299	-1.3%
MEDICAL REHABILITATION																			
UNDERGRADUATE																			
B.M.R. Physical Therapy	113	35	148	1	0	1	114	35	149	114	36	150	0	0	0	114	36	150	
B.M.R. Respiratory Therapy	28	14	42	2	0	2	30	14	44	27	14	41	2	1	3	29	15	44	
Special or Visiting	0	0	0	0	0	0	0	0	0	0	0	0	0	0	0	0	0	0	
SUBTOTAL	141	49	190	3	0	3	144	49	193	141	50	191	2	1	3	143	51	194	-0.5%
GRADUATE																			
Masters	106	15	121	13	4	17	119	19	138	108	11	119	12	4	16	120	15	135	
Occasional or Visiting Student	0	0	0	0	0	0	0	0	0	0	0	0	0	0	0	0	0	0	
SUBTOTAL	106	15	121	13	4	17	119	19	138	108	11	119	12	4	16	120	15	135	2.2%
TOTAL FACULTY/SCHOOL	247	64	311	16	4	20	263	68	331	249	61	310	14	5	19	263	66	329	0.6%
MEDICINE																			
UNDERGRADUATE																			
Doctor of Medicine (M.D.)	180	207	387	0	0	0	180	207	387	174	199	373	0	0	0	174	199	373	
Externals	19	19	38	0	0	0	19	19	38	27	19	46	0	0	0	27	19	46	
B.Sc. (Medicine) ⁵	21	41	62	0	0	0	21	41	62	15	30	45	0	0	0	15	30	45	
Special or Visiting	0	0	0	0	0	0	0	0	0	0	0	0	0	0	0	0	0	0	
SUBTOTAL	220	267	487	0	0	0	220	267	487	216	248	464	0	0	0	216	248	464	5.0%

	FALL 2007									FALL 2006									%Chg
	FULL			PART			TOTAL			FULL			PART			TOTAL			
	Female	Male	Total	Female	Male	Total	Female	Male	Total	Female	Male	Total	Female	Male	Total	Female	Male	Total	
MEDICINE (continued)																			
GRADUATE																			
Pre-Masters	0	0	0	1	1	2	1	1	2	0	0	0	2	0	2	2	0	2	
Masters	91	43	134	10	3	13	101	46	147	101	45	146	12	7	19	113	52	165	
Diploma	1	1	2	0	0	0	1	1	2	0	0	0	0	0	0	0	0	0	
Ph.D.	63	57	120	11	1	12	74	58	132	57	51	108	15	1	16	72	52	124	
Occasional or Visiting Student	1	0	1	9	5	14	10	5	15	0	0	0	13	2	15	13	2	15	
SUBTOTAL	156	101	257	31	10	41	187	111	298	158	96	254	42	10	52	200	106	306	-2.6%
POSTGRADUATE MEDICAL EDUCATION ¹⁴																			
Postgraduate Medical Education	200	280	480	0	0	0	200	280	480	171	273	444	0	0	0	171	273	444	
SUBTOTAL	200	280	480	0	0	0	200	280	480	171	273	444	0	0	0	171	273	444	8.1%
TOTAL FACULTY/SCHOOL	576	648	1224	31	10	41	607	658	1265	545	617	1162	42	10	52	587	627	1214	4.2%
MUSIC																			
UNDERGRADUATE																			
B. Music - Composition	1	3	4	0	0	0	1	3	4	0	0	0	0	0	0	0	0	0	
B. Music - General	64	45	109	2	6	8	66	51	117	2	1	3	0	0	0	2	1	3	
B. Music - History	1	0	1	1	0	1	2	0	2	0	0	0	0	0	0	0	0	0	
B. Music - Performance	17	14	31	7	2	9	24	16	40	2	0	2	1	0	1	3	0	3	
Music - Undeclared	3	5	8	0	0	0	3	5	8	91	63	154	6	8	14	97	71	168	
B.Music/B.Ed. ⁷	23	11	34	1	0	1	24	11	35	21	10	31	0	0	0	21	10	31	
Post-Baccalaureate - Diploma	3	0	3	2	0	2	5	0	5	5	1	6	0	2	2	5	3	8	
Special or Visiting	0	1	1	0	1	1	0	2	2	0	0	0	0	0	0	0	0	0	
SUBTOTAL	112	79	191	13	9	22	125	88	213	121	75	196	7	10	17	128	85	213	0.0%
GRADUATE																			
Masters	3	4	7	7	0	7	10	4	14	9	6	15	4	1	5	13	7	20	
Occasional or Visiting Student	0	0	0	0	0	0	0	0	0	0	0	0	0	0	0	0	0	0	
SUBTOTAL	3	4	7	7	0	7	10	4	14	9	6	15	4	1	5	13	7	20	-30.0%
TOTAL FACULTY/SCHOOL	115	83	198	20	9	29	135	92	227	130	81	211	11	11	22	141	92	233	-2.6%

	FALL 2007									FALL 2006									%Chg
	FULL			PART			TOTAL			FULL			PART			TOTAL			
	Female	Male	Total	Female	Male	Total	Female	Male	Total	Female	Male	Total	Female	Male	Total	Female	Male	Total	
NURSING																			
UNDERGRADUATE¹⁵																			
B. of Nursing (B.N.)	628	90	718	35	5	40	663	95	758	606	90	696	25	9	34	631	99	730	
B.N. - Accelerated	2	0	2	1	1	2	3	1	4	2	0	2	2	0	2	4	0	4	
B.N. - Norway House ¹⁶	4	0	4	3	0	3	7	0	7	3	1	4	4	0	4	7	1	8	
B.N. - UM/RRC	107	18	125	19	2	21	126	20	146	69	7	76	86	4	90	155	11	166	
B.N. - UM/UCN ¹⁷	52	4	56	7	0	7	59	4	63	24	2	26	47	3	50	71	5	76	
Bacc. Program for Reg. Nurses (BPRN)	8	0	8	138	8	146	146	8	154	12	0	12	138	9	147	150	9	159	
Special or Visiting	13	4	17	0	0	0	13	4	17	21	5	26	1	0	1	22	5	27	
SUBTOTAL	814	116	930	203	16	219	1017	132	1149	737	105	842	303	25	328	1040	130	1170	-1.8%
GRADUATE																			
Masters	37	3	40	45	5	50	82	8	90	26	3	29	56	5	61	82	8	90	
Ph.D.	0	0	0	0	0	0	0	0	0	0	0	0	0	0	0	0	0	0	
Occasional or Visiting Student	0	0	0	2	0	2	2	0	2	0	0	0	1	0	1	1	0	1	
SUBTOTAL	37	3	40	47	5	52	84	8	92	26	3	29	57	5	62	83	8	91	1.1%
TOTAL FACULTY/SCHOOL	851	119	970	250	21	271	1101	140	1241	763	108	871	360	30	390	1123	138	1261	-1.6%
PHARMACY																			
UNDERGRADUATE																			
B.Sc. in Pharmacy	123	55	178	10	7	17	133	62	195	124	48	172	14	6	20	138	54	192	
Special or Visiting	0	0	0	0	0	0	0	0	0	0	0	0	0	0	0	0	0	0	
SUBTOTAL	123	55	178	10	7	17	133	62	195	124	48	172	14	6	20	138	54	192	1.6%
GRADUATE																			
Masters	1	0	1	1	1	2	2	1	3	3	1	4	1	0	1	4	1	5	
Ph.D.	6	4	10	0	0	0	6	4	10	4	5	9	0	1	1	4	6	10	
Occasional or Visiting Student	0	0	0	0	0	0	0	0	0	0	0	0	0	0	0	0	0	0	
SUBTOTAL	7	4	11	1	1	2	8	5	13	7	6	13	1	1	2	8	7	15	-13.3%
TOTAL FACULTY/SCHOOL	130	59	189	11	8	19	141	67	208	131	54	185	15	7	22	146	61	207	0.5%

	FALL 2007						FALL 2006						%Chg						
	FULL			PART			TOTAL			FULL				PART			TOTAL		
	Female	Male	Total	Female	Male	Total	Female	Male	Total	Female	Male	Total	Female	Male	Total	Female	Male	Total	
SCIENCE																			
UNDERGRADUATE																			
B.Sc.	809	809	1618	158	188	346	967	997	1964	835	826	1661	209	197	406	1044	1023	2067	
B.Sc. (Major)	204	238	442	12	27	39	216	265	481	167	254	421	29	61	90	196	315	511	
B.Sc. (Honours)	114	124	238	1	1	2	115	125	240	119	137	256	18	32	50	137	169	306	
B. Computer Sc. (Honours)	8	82	90	0	4	4	8	86	94	3	44	47	4	34	38	7	78	85	
Special or Visiting	3	2	5	4	2	6	7	4	11	4	4	8	14	1	15	18	5	23	
St. Boniface ²	2	3	5	1	2	3	3	5	8	2	5	7	2	1	3	4	6	10	
SUBTOTAL	1140	1258	2398	176	224	400	1316	1482	2798	1130	1270	2400	276	326	602	1406	1596	3002	-6.8%
GRADUATE																			
Pre-Masters	0	1	1	0	0	0	0	1	1	2	2	4	0	0	0	2	2	4	
Masters	55	95	150	1	7	8	56	102	158	58	107	165	1	7	8	59	114	173	
Ph.D.	37	77	114	0	1	1	37	78	115	38	81	119	0	0	0	38	81	119	
Occasional or Visiting Student	0	0	0	2	2	4	2	2	4	1	0	1	1	1	2	2	1	3	
SUBTOTAL	92	173	265	3	10	13	95	183	278	99	190	289	2	8	10	101	198	299	-7.0%
TOTAL FACULTY/SCHOOL	1232	1431	2663	179	234	413	1411	1665	3076	1229	1460	2689	278	334	612	1507	1794	3301	-6.8%
SOCIAL WORK																			
UNDERGRADUATE																			
B.S.W.	82	20	102	16	4	20	98	24	122	76	17	93	21	8	29	97	25	122	
B.S.W. - Concentrated	48	12	60	4	1	5	52	13	65	49	9	58	2	1	3	51	10	61	
B.S.W. - Distance Delivery	74	9	83	157	28	185	231	37	268	74	15	89	121	14	135	195	29	224	
B.S.W. - Inner City Social Work ¹⁸	101	10	111	41	12	53	142	22	164	101	12	113	55	12	67	156	24	180	
B.S.W. - Northern Affirm. Action	27	2	29	7	1	8	34	3	37	20	1	21	11	0	11	31	1	32	
B.S.W. - Northern	7	1	8	0	0	0	7	1	8	6	0	6	3	1	4	9	1	10	
Special or Visiting	0	1	1	3	0	3	3	1	4	1	1	2	2	0	2	3	1	4	
SUBTOTAL	339	55	394	228	46	274	567	101	668	327	55	382	215	36	251	542	91	633	5.5%
GRADUATE																			
Pre-Masters	6	0	6	10	0	10	16	0	16	2	0	2	12	2	14	14	2	16	
Masters	65	15	80	81	19	100	146	34	180	78	12	90	61	23	84	139	35	174	
Ph.D.	8	1	9	3	1	4	11	2	13	7	1	8	4	0	4	11	1	12	
Occasional or Visiting Student	0	0	0	2	2	4	2	2	4	0	0	0	3	0	3	3	0	3	
SUBTOTAL	79	16	95	96	22	118	175	38	213	87	13	100	80	25	105	167	38	205	3.9%
TOTAL FACULTY/SCHOOL	418	71	489	324	68	392	742	139	881	414	68	482	295	61	356	709	129	838	5.1%

	FALL 2007									FALL 2006									%Chg
	FULL			PART			TOTAL			FULL			PART			TOTAL			
	Female	Male	Total	Female	Male	Total	Female	Male	Total	Female	Male	Total	Female	Male	Total	Female	Male	Total	
UNIVERSITY 1¹⁹																			
UNDERGRADUATE																			
First Year - new	1938	1495	3433	130	147	277	2068	1642	3710	1849	1468	3317	158	128	286	2007	1596	3603	3.0%
Continuing	923	905	1828	270	218	488	1193	1123	2316	759	808	1567	273	212	485	1032	1020	2052	12.9%
Special or Visiting	0	0	0	0	0	0	0	0	0	3	2	5	2	0	2	5	2	7	
St. Boniface ²	7	2	9	1	1	2	8	3	11	1	1	2	1	0	1	2	1	3	
SUBTOTAL	2868	2402	5270	401	366	767	3269	2768	6037	2612	2279	4891	434	340	774	3046	2619	5665	6.6%
TOTAL FACULTY/SCHOOL	2868	2402	5270	401	366	767	3269	2768	6037	2612	2279	4891	434	340	774	3046	2619	5665	6.6%
SUMMARY:																			
UNDERGRADUATE																			
Degree	9723	8178	17901	1709	1286	2995	11432	9464	20896	9477	8074	17551	1993	1440	3433	11470	9514	20984	
Diploma	122	92	214	322	84	406	444	176	620	138	100	238	303	73	376	441	173	614	
B.Sc. (Dentistry) ⁵	5	5	10	0	0	0	5	5	10	3	4	7	0	0	0	3	4	7	
B.Sc. (Medicine) ⁵	21	41	62	0	0	0	21	41	62	15	30	45	0	0	0	15	30	45	
Special or Visiting students	265	211	476	551	254	805	816	465	1281	321	230	551	628	255	883	949	485	1434	
Other	34	36	70	28	9	37	62	45	107	41	27	68	27	10	37	68	37	105	
St. Boniface students ²	42	10	52	25	9	34	67	19	86	21	13	34	25	3	28	46	16	62	
UNDERGRADUATE TOTAL	10212	8573	18785	2635	1642	4277	12847	10215	23062	10016	8478	18494	2976	1781	4757	12992	10259	23251	-0.8%
GRADUATE																			
Pre-Masters	29	26	55	21	8	29	50	34	84	40	36	76	26	5	31	66	41	107	
Joint Masters ³	28	33	61	11	10	21	39	43	82	32	42	74	3	3	6	35	45	80	
Masters	935	628	1563	401	213	614	1336	841	2177	943	650	1593	390	235	625	1333	885	2218	
Diploma	1	1	2	0	0	0	1	1	2	0	0	0	0	0	0	0	0	0	
Ph.D.	333	436	769	38	18	56	371	454	825	277	422	699	37	17	54	314	439	753	
Occasional or Visiting students	2	3	5	29	18	47	31	21	52	7	3	10	27	8	35	34	11	45	
St. Boniface students ²	22	10	32	23	13	36	45	23	68	7	4	11	11	11	22	18	15	33	
GRADUATE TOTAL	1350	1137	2487	523	280	803	1873	1417	3290	1306	1157	2463	494	279	773	1800	1436	3236	1.7%
POSTGRADUATE MEDICAL EDUCATION¹⁴	200	280	480	0	0	0	200	280	480	171	273	444	0	0	0	171	273	444	8.1%
TOTAL STUDENTS	11762	9990	21752	3158	1922	5080	14920	11912	26832	11493	9908	21401	3470	2060	5530	14963	11968	26931	-0.4%

Notes:

1. The Internationally Educated Agrologist pilot program (IEAP) was introduced in Fall 2007.
2. St. Boniface College students are included in headcounts when registered in courses at the University of Manitoba.
3. In Fall 2007 (at Nov. 1st), there were 112 Joint Master's Program students in the programs shared by the University of Manitoba and the University of Winnipeg (114 in Fall 2006). Based on workload calculations, the following JMPs have been reported under the University of Manitoba:

	Fall 2007		Fall 2006	
	FT	PT	FT	PT
In the Faculty of Arts				
History	36	7	39	6
Public Administration	18	14	29	0
Religion	7	0	6	0
Total	61	21	74	6

4. Transfer credit programs for graduates of the Business Admin. diploma programs at École technique et professionnelle (ÉTP) and Assiniboine (ACC) and Red River (RRC) colleges.
5. B.Sc.(Dentistry) (Medicine) are second and third year Dental and Medical students who registered for the B.Sc. programs in the summer session. Includes all students in the program.
6. Students who are enrolled in the integrated B.Hum.Ecol./B.Educ. program are shown in the Faculty of Human Ecology for years 3 and 4 and in Education for year 5.
7. Enrolment in the integrated B.Music/B.Ed. program is shown in Music for years 3 and 4 and in Education for year 5.
8. The Academic & Professional Bridging program for Internationally Educated Teachers (IET) was introduced in Winter 2006.
9. The Internationally Educated Engineers Qualification program (IEEQ) was introduced in 2003 and expanded in Fall 2007.
10. Applied Health Sciences is a new Ph.D. program in Fall 2007 offered jointly by Human Ecology, Kinesiology and Recreation Management, Nursing and the School of Medical Rehabilitation.
11. New programs in Fall 2007.
12. Includes students in the After Degree program in Family Social Sciences, new in Fall 2007.
13. The Faculty of Physical Education and Recreation Studies was renamed the Faculty of Kinesiology and Recreation Management in July 2007.
14. Postgraduate Medical Education students are physicians who have completed their undergraduate medical degree who are now registered in clinical residency programs.
15. Students entering the baccalaureate nursing program may take courses at alternate sites. Enrolments shown in this table reflect students registered in U of M courses only.
16. Students apply to Nursing once first-year studies are complete. First year students are now admitted to Extended Education as special students.
17. The U of M offers selected courses, and the majority of fourth year courses, for the University College of the North via distance education modalities.
18. The Inner City Social Work program was previously reported as Winnipeg Education Centre.
19. University 1 program introduced in 1998-99. Most "new" students, with limited or no university experience, have registered under this program. Students have to complete 24-30 credit hours under University 1 before moving into a degree program. Beginning in 2007, the requirements to transit changed requiring a minimum GPA of 2.0. This policy change has impacted the intake of students into Arts and Science in 2007.

UNDERGRADUATE STUDENTS BY PROGRAM OR AREA OF STUDY¹ AND YEAR²
Fall 2007 (at November 1st)

*****PLEASE READ FOOTNOTE 2 DETAILING THE CHANGE IN THE METHOD OF CALCULATING YEAR.*****

FACULTY/SCHOOL/PROGRAM	YEAR 1	YEAR 2	YEAR 3	YEAR 4	YEAR 5	Other	TOTAL
AGRIC. & FOOD SCI. (DEGREE)							
Agribusiness							
Agribusiness	26	13	27	40	0	0	106
Business Management	10	0	0	0	0	0	10
SUBTOTAL	36	13	27	40	0	0	116
Agriculture							
Agronomy	11	1	10	17	0	0	39
Animal Systems	29	2	11	8	0	0	50
Plant Biotechnology	3	1	3	3	0	0	10
SUBTOTAL	43	4	24	28	0	0	99
Agroecology	5	1	1	4	0	0	11
Food Science	16	4	9	15	0	0	44
Co-op	0	0	0	1	0	0	1
Pre-Veterinary	0	0	0	2	0	0	2
Undeclared	5	0	0	0	0	0	5
Int'l Educated Agrologists Program (IEAP) ³	0	0	0	0	0	13	13
Special or Visiting	0	0	0	0	0	7	7
TOTAL FACULTY/SCHOOL	105	22	61	90	0	20	298
AGRIC. & FOOD SCI. (DIPLOMA)							
Agricultural Finance	1	5	0	0	0	0	6
Business Management	1	7	0	0	0	0	8
Crop Management	0	13	0	0	0	0	13
General Agriculture	0	12	0	0	0	0	12
Livestock Management	0	4	0	0	0	0	4
Undeclared	54	0	0	0	0	0	54
TOTAL FACULTY/SCHOOL	56	41	0	0	0	0	97
ARCHITECTURE							
Environmental Design	101	103	88	0	0	0	292
TOTAL FACULTY/SCHOOL	101	103	88	0	0	0	292
ART (DEGREE)							
Art History	3	3	4	0	0	0	10
Art History (Honours)	0	0	3	0	0	0	3
Fine Arts	127	92	60	0	0	0	279
Fine Arts (Honours)	1	0	39	49	0	0	89
Special or Visiting	0	0	0	0	0	3	3
TOTAL FACULTY/SCHOOL	131	95	106	49	0	3	384
ART (DIPLOMA)							
Fine Arts	14	8	3	1	0	0	26
TOTAL FACULTY/SCHOOL	14	8	3	1	0	0	26
ARTS							
Anthropology							
Major (3-Year)	1	22	35	0	0	0	58
Advanced (4-Year)	0	4	10	13	0	0	27
SUBTOTAL	1	26	45	13	0	0	85
Art History							
Major (3-Year)	0	0	5	0	0	0	5
SUBTOTAL	0	0	5	0	0	0	5
Asian Studies							
Major (3-Year)	0	6	8	0	0	0	14
SUBTOTAL	0	6	8	0	0	0	14
Canadian Studies							
Major (3-Year)	0	0	3	0	0	0	3
Honours (4-Year)	0	0	0	1	0	0	1
SUBTOTAL	0	0	3	1	0	0	4
Classics							
Classics							
Major (3-Year)	0	1	1	0	0	0	2
Advanced (4-Year)	0	1	0	0	0	0	1
SUBTOTAL	0	2	1	0	0	0	3
Classical Studies							
Major (3-Year)	1	1	7	0	0	0	9
Advanced (4-Year)	0	2	5	1	0	0	8
SUBTOTAL	1	3	12	1	0	0	17

UNDERGRADUATE STUDENTS BY PROGRAM OR AREA OF STUDY¹ AND YEAR²
Fall 2007 (at November 1st)

*****PLEASE READ FOOTNOTE 2 DETAILING THE CHANGE IN THE METHOD OF CALCULATING YEAR.*****

FACULTY/SCHOOL/PROGRAM	YEAR 1	YEAR 2	YEAR 3	YEAR 4	YEAR 5	Other	TOTAL
ARTS (Continued)							
Drama							
Major (3-Year)	0	5	6	0	0	0	11
Advanced (4-Year)	0	0	4	1	0	0	5
SUBTOTAL	0	5	10	1	0	0	16
Economics							
Major (3-Year)	5	136	247	0	0	0	388
Advanced (4-Year)	2	5	16	20	0	0	43
Honours (4-Year)	0	2	4	7	0	0	13
SUBTOTAL	7	143	267	27	0	0	444
English							
Major (3-Year)	3	63	95	0	0	0	161
Advanced (4-Year)	0	2	6	11	0	0	19
Honours (4-Year)	0	3	14	12	0	0	29
SUBTOTAL	3	68	115	23	0	0	209
Film Studies							
Major (3-Year)	2	19	18	0	0	0	39
Advanced (4-Year)	0	0	2	4	0	0	6
SUBTOTAL	2	19	20	4	0	0	45
French, Spanish & Italian							
French							
Major (3-Year)	2	8	15	0	0	0	25
Advanced (4-Year)	0	0	0	1	0	0	1
Honours (4-Year)	0	0	2	1	0	0	3
SUBTOTAL	2	8	17	2	0	0	29
Italian							
Major (3-Year)	0	0	1	0	0	0	1
SUBTOTAL	0	0	1	0	0	0	1
Italian Studies							
Major (3-Year)	0	0	1	0	0	0	1
SUBTOTAL	0	0	1	0	0	0	1
Spanish							
Major (3-Year)	1	7	9	0	0	0	17
Advanced (4-Year)	0	0	0	1	0	0	1
SUBTOTAL	1	7	9	1	0	0	18
Geography ⁴							
Major (3-Year)	1	0	7	0	0	0	8
SUBTOTAL	1	0	7	0	0	0	8
German & Slavic Studies							
German							
Major (3-Year)	1	4	5	0	0	0	10
Honours (4-Year)	0	0	1	0	0	0	1
SUBTOTAL	1	4	6	0	0	0	11
Russian							
Major (3-Year)	0	1	3	0	0	0	4
SUBTOTAL	0	1	3	0	0	0	4
Ukrainian							
Major (3-Year)	0	0	2	0	0	0	2
SUBTOTAL	0	0	2	0	0	0	2
Global Political Economy							
Major (3-Year)	1	2	7	0	0	0	10
Advanced (4-Year)	0	4	13	8	0	0	25
SUBTOTAL	1	6	20	8	0	0	35
History							
Major (3-Year)	7	61	136	0	0	0	204
Advanced (4-Year)	0	2	4	8	0	0	14
Honours (4-Year)	0	3	9	13	0	0	25
SUBTOTAL	7	66	149	21	0	0	243
Icelandic Studies							
Major (3-Year)	0	0	1	0	0	0	1
SUBTOTAL	0	0	1	0	0	0	1
Labour & Workplace Studies							
Major (3-Year)	0	5	16	0	0	0	21
Advanced (4-Year)	1	0	2	4	0	0	7
SUBTOTAL	1	5	18	4	0	0	28

UNDERGRADUATE STUDENTS BY PROGRAM OR AREA OF STUDY¹ AND YEAR²
Fall 2007 (at November 1st)

*****PLEASE READ FOOTNOTE 2 DETAILING THE CHANGE IN THE METHOD OF CALCULATING YEAR.*****

FACULTY/SCHOOL/PROGRAM	YEAR 1	YEAR 2	YEAR 3	YEAR 4	YEAR 5	Other	TOTAL
ARTS (Continued)							
Linguistics							
Major (3-Year)	1	8	18	0	0	0	27
Advanced (4-Year)	0	1	8	15	0	0	24
SUBTOTAL	1	9	26	15	0	0	51
Sign Language							
Major (3-Year)	0	12	2	0	0	0	14
SUBTOTAL	0	12	2	0	0	0	14
Mathematics							
Major (3-Year)	0	10	12	0	0	0	22
SUBTOTAL	0	10	12	0	0	0	22
Mathematics-Economics							
Honours (4-Year)	0	2	0	0	0	0	2
SUBTOTAL	0	2	0	0	0	0	2
Medieval & Renaissance St.							
Advanced (4-Year)	0	0	0	1	0	0	1
SUBTOTAL	0	0	0	1	0	0	1
Native Studies							
Major (3-Year)	0	12	24	0	0	0	36
Advanced (4-Year)	0	0	1	2	0	0	3
SUBTOTAL	0	12	25	2	0	0	39
Philosophy							
Major (3-Year)	0	10	21	0	0	0	31
Advanced (4-Year)	0	0	2	0	0	0	2
Honours (4-Year)	0	0	2	4	0	0	6
SUBTOTAL	0	10	25	4	0	0	39
Political Studies							
Major (3-Year)	1	37	67	0	0	0	105
Advanced (4-Year)	2	0	6	9	0	0	17
Honours (4-Year)	1	9	16	25	0	0	51
SUBTOTAL	4	46	89	34	0	0	173
Psychology							
Major (3-Year)	21	216	303	0	0	0	540
Advanced (4-Year)	1	3	14	48	0	0	66
Honours (4-Year)	3	7	28	45	0	0	83
SUBTOTAL	25	226	345	93	0	0	689
Religion							
Major (3-Year)	1	10	17	0	0	0	28
Advanced (4-Year)	0	0	1	0	0	0	1
Honours (4-Year)	0	1	1	3	0	0	5
SUBTOTAL	1	11	19	3	0	0	34
Sociology							
Major (3-Year)	5	36	91	0	0	0	132
Advanced (4-Year)	0	0	0	0	0	0	0
Honours (4-Year)	0	2	5	11	0	0	18
SUBTOTAL	5	38	96	11	0	0	150
Criminology							
Major (3-Year)	2	33	88	0	0	0	123
SUBTOTAL	2	33	88	0	0	0	123
Theatre							
Major (3-Year)	0	0	1	0	0	0	1
SUBTOTAL	0	0	1	0	0	0	1
Women's Studies							
Major (3-Year)	1	3	5	0	0	0	9
Advanced (4-Year)	0	0	0	1	0	0	1
Honours (4-Year)	0	1	0	4	0	0	5
SUBTOTAL	1	4	5	5	0	0	15
Undeclared							
Major (3-Year)	173	694	39	0	0	0	906
St. Boniface students ⁵	8	8	16	0	0	0	32
Special or Visiting	0	0	0	0	0	35	35
SUMMARY:							
Major (3-Year)	230	1422	1316	0	0	0	2968
Advanced (4-Year)	6	24	94	148	0	0	272
Honours (4-Year)	4	30	82	126	0	0	242
St. Boniface students⁵	8	8	16	0	0	0	32
Special or Visiting	0	0	0	0	0	35	35
TOTAL FACULTY/SCHOOL	248	1484	1508	274	0	35	3549

UNDERGRADUATE STUDENTS BY PROGRAM OR AREA OF STUDY¹ AND YEAR²
Fall 2007 (at November 1st)

*****PLEASE READ FOOTNOTE 2 DETAILING THE CHANGE IN THE METHOD OF CALCULATING YEAR.*****

FACULTY/SCHOOL/PROGRAM	YEAR 1	YEAR 2	YEAR 3	YEAR 4	YEAR 5	Other	TOTAL
BUSINESS, ASPER SCHOOL OF⁶							
Aboriginal Business St.	0	0	0	0	0	0	0
Accounting & Finance							
Accounting	0	14	131	206	0	0	351
Finance	0	7	85	108	0	0	200
Management Information Systems	0	1	7	10	0	0	18
SUBTOTAL	0	22	223	324	0	0	569
Actuarial Studies, Warren Centre							
Actuarial Mathematics	0	4	27	23	0	0	54
Actuarial Studies and Research	0	0	0	1	0	0	1
SUBTOTAL	0	4	27	24	0	0	55
Business Administration							
Human Res. Mgmt & Industrial Relations	1	0	16	56	0	0	73
Management of Organizations	0	1	10	4	0	0	15
SUBTOTAL	1	1	26	60	0	0	88
Generalist	8	301	192	15	0	0	516
Interdisciplinary	0	0	1	3	0	0	4
International Business	2	1	18	13	0	0	34
Marketing							
Entrepreneurship & Small Business	0	0	8	16	0	0	24
Marketing	1	6	57	100	0	0	164
SUBTOTAL	1	6	65	116	0	0	188
Supply Chain Management							
Logistics & Supply Chain Management	0	1	12	25	0	0	38
SUBTOTAL	0	1	12	25	0	0	38
Undeclared	6	0	4	0	0	0	10
Visiting	0	0	0	0	0	28	28
TOTAL FACULTY/SCHOOL	18	336	568	580	0	28	1530
DENTAL HYGIENE							
Dental Hygiene	27	26	0	0	0	0	53
TOTAL FACULTY/SCHOOL	27	26	0	0	0	0	53
DENTISTRY⁷							
Dentistry	30	28	30	28	0	0	116
Int'l Dentist Degree Program (IDDP) ³	0	0	4	7	0	0	11
TOTAL FACULTY/SCHOOL	30	28	34	35	0	0	127
EDUCATION							
Early Years							
English	11	14	0	0	0	0	25
Fine Arts	2	3	0	0	0	0	5
French	1	4	0	0	0	0	5
General Science Education	7	3	0	0	0	0	10
Geography	13	11	0	0	0	0	24
History	15	15	0	0	0	0	30
Mathematics	0	2	0	0	0	0	2
Music	4	3	0	0	0	0	7
Native Studies	3	1	0	0	0	0	4
Physical Education	7	6	0	0	0	0	13
Theatre	1	1	0	0	0	0	2
SUBTOTAL	64	63	0	0	0	0	127
Middle Years							
Computer Science	0	3	0	0	0	0	3
English	9	14	5	0	0	0	28
Fine Arts	1	2	0	0	0	0	3
French	3	1	1	0	0	0	5
General Science Education	14	4	2	0	0	0	20
Geography	9	9	6	0	0	0	24
Heritage, Aborig. or World Languages	1	1	0	0	0	0	2
History	10	18	8	0	0	0	36
Human Ecology	3	1	1	0	0	0	5
Mathematics	2	2	2	0	0	0	6
Music	0	2	0	0	0	0	2
Native Studies	2	1	0	0	0	0	3
Physical Education	12	9	0	0	0	0	21
Theatre	0	1	1	0	0	0	2
Undeclared	2	0	0	0	0	0	2
SUBTOTAL	68	68	26	0	0	0	162

UNDERGRADUATE STUDENTS BY PROGRAM OR AREA OF STUDY¹ AND YEAR²
Fall 2007 (at November 1st)

*****PLEASE READ FOOTNOTE 2 DETAILING THE CHANGE IN THE METHOD OF CALCULATING YEAR.*****

FACULTY/SCHOOL/PROGRAM	YEAR 1	YEAR 2	YEAR 3	YEAR 4	YEAR 5	Other	TOTAL
EDUCATION (Continued)							
Senior Years							
Biology	13	16	0	0	0	0	29
Chemistry	2	3	0	0	0	0	5
Computer Science	2	2	0	0	0	0	4
English	13	12	0	0	0	0	25
Fine Arts	11	13	0	0	0	0	24
French	1	5	0	0	0	0	6
General Science Education	3	6	0	0	0	0	9
Geography	8	7	0	0	0	0	15
Heritage, Aborig. or World Languages	1	1	0	0	0	0	2
History	10	13	0	0	0	0	23
Human Ecology	4	2	0	0	0	0	6
Mathematics	16	12	0	0	0	0	28
Music	2	2	0	0	0	0	4
Native Studies	2	2	0	0	0	0	4
Physical Education	26	29	0	0	0	0	55
Physics & Astronomy	1	0	0	0	0	0	1
Theatre	2	2	0	0	0	0	4
SUBTOTAL	117	127	0	0	0	0	244
B.H. Ecology/B.Ed (Year 5) ⁸	0	0	0	0	7	0	7
B.Music/B.Ed (Year 5) ⁹	1	2	0	0	15	0	18
Post Baccalaureate Certificate ¹⁰	0	0	0	0	0	18	18
Post Baccalaureate Diploma ¹⁰	0	0	0	0	0	393	393
Int'l Educated Teachers (IET) ³	0	0	0	0	0	11	11
St. Boniface students ⁵	14	1	0	0	0	0	15
Special	0	0	0	0	0	0	0
TOTAL FACULTY/SCHOOL	264	261	26	0	22	422	995
ENGINEERING							
Common First Year Program	174	9	0	0	0	0	183
Biosystems	15	18	17	25	0	0	75
Co-op	0	0	0	0	1	0	1
SUBTOTAL	15	18	17	25	1	0	76
Civil	34	51	63	73	0	0	221
Co-op	12	0	1	18	0	0	31
SUBTOTAL	46	51	64	91	0	0	252
Electrical & Computer							
Computer	18	13	29	43	0	0	103
Electrical	28	26	40	62	0	0	156
SUBTOTAL	46	39	69	105	0	0	259
Mechanical & Manufacturing							
Manufacturing	5	6	5	10	0	0	26
Co-op	0	0	0	0	3	0	3
Mechanical	67	78	70	69	0	0	284
Co-op	2	1	10	22	21	0	56
SUBTOTAL	74	85	85	101	24	0	369
Access Program	31	3	0	0	0	0	34
Visiting	0	0	0	0	0	14	14
Int'l Educ. Engineers Qualif. Prog. (IEEQ) ³	0	0	0	0	0	11	11
TOTAL FACULTY/SCHOOL	386	205	235	322	25	25	1198
ENVIRONMENT, EARTH, AND RESOURCES, CLAYTON H. RIDDELL FACULTY OF							
Environmental Sci. ⁴							
General (3-Year)	0	0	3	0	0	0	3
Major (4-Year)	12	27	26	16	0	0	81
Major Co-op (4-Year)	0	0	0	0	0	0	0
Honours (4-Year)	0	0	0	1	0	0	1
Honours Co-op (4-Year)	0	0	0	0	0	0	0
SUBTOTAL	12	27	29	17	0	0	85
Environmental St.							
General (3-Year)	1	2	3	0	0	0	6
Major (4-Year)	6	28	28	26	0	0	88
Major Co-op (4-Year)	0	0	0	0	0	0	0
Honours (4-Year)	0	1	2	2	0	0	5
SUBTOTAL	7	31	33	28	0	0	99

UNDERGRADUATE STUDENTS BY PROGRAM OR AREA OF STUDY¹ AND YEAR²
Fall 2007 (at November 1st)

*****PLEASE READ FOOTNOTE 2 DETAILING THE CHANGE IN THE METHOD OF CALCULATING YEAR.*****

FACULTY/SCHOOL/PROGRAM	YEAR 1	YEAR 2	YEAR 3	YEAR 4	YEAR 5	Other	TOTAL
ENVIRONMENT, EARTH, AND RESOURCES (Continued)							
Geography ⁴							
General (3-Year)	22	20	48	0	0	0	90
Advanced (4-Year)	0	2	3	2	0	0	7
Honours (4-Year)	1	0	1	3	0	0	5
SUBTOTAL	23	22	52	5	0	0	102
Geological Sciences							
Geological Sciences							
General (3-Year)	2	0	0	0	0	0	2
SUBTOTAL	2	0	0	0	0	0	2
Geology							
Major (4-Year)	13	14	14	12	0	0	53
Honours (4-Year)	0	5	4	6	0	0	15
SUBTOTAL	13	19	18	18	0	0	68
Geophysics							
Major (4-Year)	0	1	0	1	0	0	2
Honours (4-Year)	0	1	2	2	0	0	5
SUBTOTAL	0	2	2	3	0	0	7
Physical Geography							
Major (4-Year)	2	8	3	4	0	0	17
Honours (4-Year)	1	0	0	1	0	0	2
SUBTOTAL	3	8	3	5	0	0	19
Special or Visiting	0	0	0	0	0	30	30
SUMMARY:							
General (3-Year)	25	22	54	0	0	0	101
Major, Adv. & Major Co-op (4-Year)	33	80	74	61	0	0	248
Honours & Hons. Co-op (4-Year)	2	7	9	15	0	0	33
Special or Visiting	0	0	0	0	0	30	30
TOTAL FACULTY/SCHOOL	60	109	137	76	0	30	412
EXTENDED EDUCATION							
Diploma:							
Aboriginal Child & Family Services	0	0	0	0	0	17	17
First Nation Community Wellness	0	0	0	0	0	26	26
First Nation Health	0	0	0	0	0	14	14
Labour Relations & Workplace Studies	0	0	0	0	0	3	3
Special, Visiting, Auditing	0	0	0	0	0	1113	1113
St. Boniface students ⁵	0	0	0	0	0	7	7
TOTAL FACULTY/SCHOOL	0	0	0	0	0	1180	1180
HUMAN ECOLOGY							
Family Social Sciences	0	43	39	52	0	0	134
Second Degree Program	0	0	2	3	0	0	5
Health Sciences ¹¹	0	2	2	0	0	0	4
Health Studies ¹¹	0	1	2	0	0	0	3
Human Ecology	0	7	2	6	0	0	15
Human Nutritional Sci.							
Foods	0	1	2	4	0	0	7
Nutrition	0	85	72	65	0	0	222
Second Degree Program	0	0	18	11	0	0	29
Textile Sciences ¹²							
Product Dev. In Textile Sci.	0	7	7	9	0	0	23
Textile Dev. In Textile Sci.	0	5	1	0	0	0	6
Clothing & Textiles ¹²	0	0	1	10	0	0	11
Undeclared	0	4	2	0	0	0	6
B.H. Ecology/B.Ed (Year 3,4) ⁸	0	0	0	3	0	0	3
Special	0	0	0	0	0	8	8
TOTAL FACULTY/SCHOOL	0	155	150	163	0	8	476
KINESIOLOGY & RECREATION MANAGEMENT¹³							
Kinesiology	0	43	0	0	0	0	43
Athletic Therapy	0	22	18	15	0	0	55
Exercise and Sport Science	0	0	1	7	0	0	8
Physical Health and Wellness	0	13	30	26	0	0	69
SUBTOTAL	0	78	49	48	0	0	175
Physical Education	0	75	58	0	0	0	133
Recreation Mgmt. & Community Development	0	46	23	26	0	0	95
TOTAL FACULTY/SCHOOL	0	199	130	74	0	0	403

UNDERGRADUATE STUDENTS BY PROGRAM OR AREA OF STUDY¹ AND YEAR²
Fall 2007 (at November 1st)

*****PLEASE READ FOOTNOTE 2 DETAILING THE CHANGE IN THE METHOD OF CALCULATING YEAR.*****

FACULTY/SCHOOL/PROGRAM	YEAR 1	YEAR 2	YEAR 3	YEAR 4	YEAR 5	Other	TOTAL
LAW							
Law	109	84	90	0	0	0	283
Special or Visiting	0	0	0	0	0	9	9
TOTAL FACULTY/SCHOOL	109	84	90	0	0	9	292
MEDICAL REHABILITATION							
Physical Therapy	50	53	46	0	0	0	149
Respiratory Therapy	18	15	11	0	0	0	44
TOTAL FACULTY/SCHOOL	68	68	57	0	0	0	193
MEDICINE¹⁴							
Medicine	101	104	96	86	0	0	387
TOTAL FACULTY/SCHOOL	101	104	96	86	0	0	387
MUSIC							
Music	53	48	26	36	0	0	163
B.Music/B.Ed (Year 3,4) ⁹	0	0	21	14	0	0	35
Undeclared	8	0	0	0	0	0	8
Post Baccalaureate Diploma	0	0	0	0	0	5	5
Special	0	0	0	0	0	2	2
TOTAL FACULTY/SCHOOL	61	48	47	50	0	7	213
NURSING¹⁵							
Fort Garry	29	263	234	236	0	0	762
Norway House	1	0	0	6	0	0	7
Joint Programs							
Red River College (RRC)	60	6	6	74	0	0	146
University College of the North (UCN)	8	8	14	33	0	0	63
Post Baccalaureate for Registered Nurses	106	48	0	0	0	0	154
Special	0	0	0	0	0	17	17
TOTAL FACULTY/SCHOOL	204	325	254	349	0	17	1149
PHARMACY							
Pharmacy	50	50	49	46	0	0	195
TOTAL FACULTY/SCHOOL	50	50	49	46	0	0	195
SCIENCE							
Actuarial Mathematics							
Honours (4-Year)	5	7	6	9	0	0	27
SUBTOTAL	5	7	6	9	0	0	27
Biochemistry							
Major (4-Year)	4	2	6	9	0	0	21
Major Co-op (4-Year)	1	0	0	4	0	0	5
Honours (4-Year)	2	0	10	4	0	0	16
Honours Co-op (4-Year)	1	0	0	3	0	0	4
SUBTOTAL	8	2	16	20	0	0	46
Biology							
Major (4-Year)	3	4	10	17	0	0	34
SUBTOTAL	3	4	10	17	0	0	34
Biotechnology							
Honours (4-Year)	0	1	1	0	0	0	2
SUBTOTAL	0	1	1	0	0	0	2
Botany							
Major (4-Year)	0	0	4	1	0	0	5
Honours (4-Year)	1	1	1	1	0	0	4
SUBTOTAL	1	1	5	2	0	0	9
Chemistry							
Major (4-Year)	1	1	1	5	0	0	8
Honours (4-Year)	3	2	6	2	0	0	13
SUBTOTAL	4	3	7	7	0	0	21
Computer Science							
Major (4-Year)	16	37	40	38	0	0	131
Major Co-op (4-Year)	3	0	13	22	0	0	38
Honours (4-Year)	8	24	21	6	0	0	59
Honours Co-op (4-Year)	1	1	5	39	0	0	46
SUBTOTAL	28	62	79	105	0	0	274
Computer Science-Mathematics							
Honours (4-Year)	0	0	2	1	0	0	3
SUBTOTAL	0	0	2	1	0	0	3

UNDERGRADUATE STUDENTS BY PROGRAM OR AREA OF STUDY¹ AND YEAR²
Fall 2007 (at November 1st)

*****PLEASE READ FOOTNOTE 2 DETAILING THE CHANGE IN THE METHOD OF CALCULATING YEAR.*****

FACULTY/SCHOOL/PROGRAM	YEAR 1	YEAR 2	YEAR 3	YEAR 4	YEAR 5	Other	TOTAL
SCIENCE (Continued)							
Ecology							
Major (4-Year)	0	0	0	3	0	0	3
Major Co-op (4-Year)	0	0	0	3	0	0	3
Honours (4-Year)	1	0	1	1	0	0	3
SUBTOTAL	1	0	1	7	0	0	9
Environmental Science ⁴							
Major Co-op (4-Year)	0	0	0	1	0	0	1
SUBTOTAL	0	0	0	1	0	0	1
Genetics							
Honours (4-Year)	1	8	16	11	0	0	36
Honours Co-op (4-Year)	3	0	1	4	0	0	8
SUBTOTAL	4	8	17	15	0	0	44
Mathematics							
Applied Mathematics							
Major (4-Year)	1	0	8	7	0	0	16
SUBTOTAL	1	0	8	7	0	0	16
Mathematics							
Major (4-Year)	1	2	1	1	0	0	5
Honours (4-Year)	2	0	4	1	0	0	7
SUBTOTAL	3	2	5	2	0	0	12
Mathematics-Economics							
Honours (4-Year)	1	0	0	0	0	0	1
SUBTOTAL	1	0	0	0	0	0	1
Mathematics-Physics & Astronomy							
Honours (4-Year)	0	2	2	1	0	0	5
SUBTOTAL	0	2	2	1	0	0	5
Microbiology							
Major (4-Year)	4	18	31	41	0	0	94
Major Co-op (4-Year)	4	0	4	11	0	0	19
Honours (4-Year)	0	8	8	11	0	0	27
Honours Co-op (4-Year)	0	0	4	5	0	0	9
SUBTOTAL	8	26	47	68	0	0	149
Physics & Astronomy							
Major (4-Year)	0	0	3	1	0	0	4
Honours (4-Year)	2	2	2	4	0	0	10
SUBTOTAL	0	0	0	1	0	0	14
Psychology							
Major (4-Year)	7	3	9	14	0	0	33
Honours (4-Year)	0	6	7	5	0	0	18
SUBTOTAL	7	9	16	19	0	0	51
Statistics							
Major (4-Year)	3	1	5	12	0	0	21
Honours (4-Year)	3	0	0	5	0	0	8
SUBTOTAL	6	1	5	17	0	0	29
Statistics-Actuarial Mathematics							
Honours (4-Year)	1	1	4	5	0	0	11
SUBTOTAL	1	1	4	5	0	0	11
Zoology							
Major (4-Year)	0	12	13	11	0	0	36
Major Co-op (4-Year)	2	0	0	2	0	0	4
Honours (4-Year)	2	4	5	6	0	0	17
SUBTOTAL	4	16	18	19	0	0	57
Science - Undeclared							
General (3-Year)	311	996	656	1	0	0	1964
St. Boniface students ⁵	2	2	3	1	0	0	8
Special or Visiting	0	0	0	0	0	11	11
SCIENCE SUMMARY:							
General (3-Year)	311	996	656	1	0	0	1964
Major & Major Co-op (4-Year)	50	80	148	203	0	0	481
Honours & Hons. Co-op (4-Year)	37	67	106	124	0	0	334
St. Boniface students⁵	2	2	3	1	0	0	8
Special or Visiting	0	0	0	0	0	11	11
TOTAL FACULTY/SCHOOL	400	1145	913	329	0	11	2798

UNDERGRADUATE STUDENTS BY PROGRAM OR AREA OF STUDY¹ AND YEAR²
Fall 2007 (at November 1st)

*****PLEASE READ FOOTNOTE 2 DETAILING THE CHANGE IN THE METHOD OF CALCULATING YEAR.*****

FACULTY/SCHOOL/PROGRAM	YEAR 1	YEAR 2	YEAR 3	YEAR 4	YEAR 5	Other	TOTAL
SOCIAL WORK							
Concentrated Program (2-Year)	28	37	0	0	0	0	65
Regular Program (3-Year)	40	17	65	0	0	0	122
Inner City Social Work	61	39	14	0	0	50	164
Northern Affirmative Action	9	8	5	0	0	15	37
Northern Delivery	7	0	1	0	0	0	8
Distance Delivery	90	51	33	1	0	93	268
Special	0	0	0	0	0	4	4
TOTAL FACULTY/SCHOOL	235	152	118	1	0	162	668
UNIVERSITY 1¹⁶							
University 1	6026	0	0	0	0	0	6026
St. Boniface students ⁵	11	0	0	0	0	0	11
TOTAL FACULTY/SCHOOL	6037	0	0	0	0	0	6037
UNDERGRADUATE TOTAL	8705	5048	4670	2525	47	1957	22952

NOTES:

- Students in Double Major or Double Honours programs are reported under their first declared major.
- The calculation of year in program has changed under Aurora. Previously, faculties could elect one of three different methods of calculating year. In Aurora, a single method - prior passed hours - is used for the calculation of year. Because of this, the breakdown by year is not strictly comparable with data prior to the change in the student information system. Please note that the processes for calculating year are still being fine tuned with the transition to the new student information system, with the potential for some students to have an incorrect year.
- Program for internationally educated professionals to reach Canadian standards.
- Effective September 2003, the Bachelor of Arts degree programs in Geography and the Bachelor of Science programs in Environmental Science moved under the Clayton H. Riddell Faculty of Environment, Earth and Resources. Students admitted prior to September 2003 had the option to complete their program under Arts or Science.
- St. Boniface students are included in headcounts when taking courses at the University of Manitoba.
- Includes transfer credit programs for graduates of the Business Administration Diploma programs at Assiniboine and Red River Colleges, University College of the North and Ecole technique et professionnelle.
- Does not include B.Sc.(Dentistry) students, second and third year students who registered for the B.Sc. program in the summer session.
- Students in the B.Hum.Ecol./B.Educ. program are shown in the Faculty of Human Ecology for years 3 & 4 and in Education for year 5.
- Students in the integrated B. Music/B.Educ. program are shown in Music for years 3 & 4 and in Education for year 5.
- The Post Baccalaureate program changed from a certificate to a diploma in 2004. Students had the option to switch to the diploma.
- New program in 2007.
- The Textile Sciences program replaced the Clothing and Textiles program in 2005. Students enrolled in the Clothing and Textiles program prior to this change were permitted to continue their program until graduation.
- The Faculty of Physical Education and Recreation Studies was renamed the Faculty of Kinesiology and Recreation Management in 2007.
- Does not include B.Sc.(Medicine) students, second and third year students who registered for the B.Sc. program in the summer session, or external doctors taking Continuing Medical Education courses.
- The Bachelor of Nursing program is offered at alternate sites. Enrolments in this table reflect students taking U of M courses only.
- The University 1 program was introduced in 1998-99. Most "new" students, with limited or no university experience, have registered under this program. Students have to complete 24-30 credit hours and achieve a minimum GPA of 2.0 before moving into a degree program.

Faculty of Graduate Studies Enrolment¹
Ph.D. and Masters Students by Department
As at November 1

	Ph.D. 2007		Total 2007	Total 2006	Masters 2007		Total 2007	Total 2006	Total Full-time 2007	Total Part-time 2007	Grand Total 2007	Grand Total 2006	Percent Change
	Full-time	Part-time			Full-time	Part-time							
Agricultural & Food Sciences													
Agribusiness and Agric. Econ.	0	0	0	0	26	1	27	23	26	1	27	23	
Animal Science	11	0	11	9	12	0	12	20	23	0	23	29	
Biosystems Engineering	26	1	27	22	23	2	25	27	49	3	52	49	
Entomology	6	0	6	5	10	0	10	9	16	0	16	14	
Food Science	0	0	0	0	23	0	23	21	23	0	23	21	
Plant Science	24	3	27	29	20	3	23	21	44	6	50	50	
Soil Science	7	0	7	7	19	1	20	25	26	1	27	32	
Subtotal	74	4	78	72	133	7	140	146	207	11	218	218	0.0
Architecture													
Architecture	0	0	0	0	65	1	66	101	65	1	66	101	
City Planning	0	0	0	0	58	1	59	65	58	1	59	65	
Interior Design	0	0	0	0	31	1	32	28	31	1	32	28	
Landscape Architecture	0	0	0	0	52	1	53	54	52	1	53	54	
Subtotal	0	0	0	0	206	4	210	248	206	4	210	248	-15.3
Arts³													
Anthropology	10	0	10	7	31	1	32	29	41	1	42	36	
Classics	0	0	0	0	2	0	2	4	2	0	2	4	
Economics	17	1	18	19	12	1	13	21	29	2	31	40	
English	16	1	17	19	24	4	28	27	40	5	45	46	
French, Spanish and Italian	4	0	4	4	4	0	4	2	8	0	8	6	
German & Slavic Studies	0	0	0	0	0	1	1	0	0	1	1	0	
History	9	0	9	8	36	7	43	45	45	7	52	53	
Icelandic Studies	0	0	0	0	1	0	1	1	1	0	1	1	
Linguistics	5	1	6	7	4	1	5	4	9	2	11	11	
Native Studies	0	0	0	0	14	0	14	16	14	0	14	16	
Philosophy	0	0	0	0	11	0	11	10	11	0	11	10	
Political Studies	0	0	0	0	28	7	35	35	28	7	35	35	
Psychology	70	0	70	60	36	0	36	41	106	0	106	101	
School Psychology	0	0	0	0	20	0	20	16	20	0	20	16	
Public Administration ⁴	0	0	0	0	18	14	32	29	18	14	32	29	
Religion	8	0	8	7	7	0	7	6	15	0	15	13	
Sociology	5	1	6	4	27	5	32	31	32	6	38	35	
Canadian Studies (CUSB) ⁵	0	0	0	0	13	0	13	10	13	0	13	10	
Subtotal	144	4	148	135	288	41	329	327	432	45	477	462	3.2

	Ph.D. 2007		Total 2007	Total 2006	Masters 2007		Total 2007	Total 2006	Total Full-time 2007	Total Part-time 2007	Grand Total 2007	Grand Total 2006	Percent Change
	Full-time	Part-time			Full-time	Part-time							
Business, Asper School of													
Finance	0	0	0	0	0	0	0	1	0	0	0	1	
Generalist	0	0	0	0	0	0	0	3	0	0	0	3	
Health Administration	0	0	0	0	0	0	0	1	0	0	0	1	
Management	21	0	21	15	0	0	0	1	21	0	21	16	
Management Interdisciplinary	0	0	0	2	83	67	150	102	83	67	150	104	
Subtotal	21	0	21	17	83	67	150	108	104	67	171	125	36.8
Dentistry													
Dental Diag and Surg Sciences	0	0	0	0	9	0	9	1	9	0	9	1	
Oral & Max Surg	0	0	0	0	0	0	0	2	0	0	0	2	
Oral Biology	1	0	1	0	5	0	5	9	6	0	6	9	
Orthodontics	0	0	0	0	9	0	9	9	9	0	9	9	
Periodontics	0	0	0	0	0	0	0	3	0	0	0	3	
Subtotal	1	0	1	0	23	0	23	24	24	0	24	24	0.0
Education													
Curric: Humanities and Soc Sc	0	0	0	0	0	0	0	1	0	0	0	1	
Curriculum: Teaching & Learning	0	0	0	0	24	76	100	97	24	76	100	97	
Educ Admin, Fndns & Psychology	0	0	0	0	26	174	200	205	26	174	200	205	
Education Doctoral	31	15	46	30	0	0	0	0	31	15	46	30	
Education (CUSB) ⁶	0	0	0	0	19	35	54	22	19	35	54	22	
Subtotal	31	15	46	30	69	285	354	325	100	300	400	355	12.7
Engineering													
Civil Engineering	33	1	34	32	33	10	43	44	66	11	77	76	
Electrical and Computer Eng.	64	9	73	75	56	12	68	79	120	21	141	154	
Mechanical & Manufacturing Eng	47	1	48	41	42	3	45	47	89	4	93	88	
Subtotal	144	11	155	148	131	25	156	170	275	36	311	318	-2.2
Environment, Earth and Resources, Clayton H. Riddell, Faculty of													
Environment and Geography	0	0	0	0	51	10	61	56	51	10	61	56	
Geography	30	1	31	25	0	0	0	1	30	1	31	26	
Geological Sciences	5	0	5	4	8	3	11	8	13	3	16	12	
Natural Resources & Env Mgmt	23	0	23	23	0	0	0	0	23	0	23	23	
Natural Resources Institute	0	0	0	0	66	9	75	62	66	9	75	62	
Subtotal	58	1	59	52	125	22	147	127	183	23	206	179	15.1
Graduate Studies													
Applied Health Sciences ⁷	7	1	8	0	0	0	0	0	7	1	8	0	
Cancer Control ⁸	1	0	1	1	0	0	0	0	1	0	1	1	
Disability Studies	0	0	0	0	12	8	20	24	12	8	20	24	
Foods & Nutritional Sciences	12	1	13	14	0	0	0	0	12	1	13	14	
Interdisciplinary Program ⁹	9	2	11	12	0	0	0	1	9	2	11	13	
Peace & Conflict Studies	14	0	14	7	0	0	0	0	14	0	14	7	
Subtotal	43	4	47	34	12	8	20	25	55	12	67	59	13.6

	Ph.D. 2007		Total 2007	Total 2006	Masters 2007		Total 2007	Total 2006	Total Full-time 2007	Total Part-time 2007	Grand Total 2007	Grand Total 2006	Percent Change
	Full-time	Part-time			Full-time	Part-time							
Human Ecology													
Textile Sciences	0	0	0	0	0	0	0	2	0	0	0	2	
Family Social Sciences	0	0	0	0	11	6	17	11	11	6	17	11	
Human Nutritional Sciences	0	0	0	0	19	0	19	20	19	0	19	20	
Subtotal	0	0	0	0	30	6	36	33	30	6	36	33	9.1
Kinesiology & Recreation Management¹⁰													
Physical Education	0	0	0	0	17	2	19	20	17	2	19	20	
Recreation Studies	0	0	0	0	3	6	9	11	3	6	9	11	
Subtotal	0	0	0	0	20	8	28	31	20	8	28	31	-9.7
Law													
Law	0	0	0	0	3	0	3	4	3	0	3	4	
Subtotal	0	0	0	0	3	0	3	4	3	0	3	4	*
Medical Rehabilitation													
Medical Rehabilitation	0	0	0	0	14	16	30	32	14	16	30	32	
Occupational Therapy	0	0	0	0	107	1	108	103	107	1	108	103	
Subtotal	0	0	0	0	121	17	138	135	121	17	138	135	2.2
Medicine													
Biochem. and Medical Genetics	22	0	22	22	23	0	23	24	45	0	45	46	
Biochem. & Molecular Bio.	0	0	0	1	0	0	0	0	0	0	0	1	
Community Health Sciences ¹¹	17	11	28	27	26	10	36	41	43	21	64	68	
Human Anatomy & Cell Science	6	0	6	5	6	0	6	3	12	0	12	8	
Human Genetics	0	0	0	0	0	0	0	1	0	0	0	1	
Immunology	5	0	5	5	13	0	13	19	18	0	18	24	
Medical Microbiology	27	0	27	27	40	2	42	38	67	2	69	65	
Pathology	0	0	0	0	7	0	7	7	7	0	7	7	
Pharmacology & Therapeutics	14	0	14	8	7	0	7	13	21	0	21	21	
Physiology	29	1	30	29	12	1	13	18	41	2	43	47	
Surgery	0	0	0	0	2	0	2	1	2	0	2	1	
Subtotal	120	12	132	124	136	13	149	165	256	25	281	289	-2.8
Music													
Composition	0	0	0	0	1	0	1	3	1	0	1	3	
Conducting	0	0	0	0	0	2	2	5	0	2	2	5	
Music	0	0	0	0	4	1	5	0	4	1	5	0	
Performance	0	0	0	0	2	4	6	12	2	4	6	12	
Subtotal	0	0	0	0	7	7	14	20	7	7	14	20	-30.0
Nursing													
Nursing	0	0	0	0	40	50	90	90	40	50	90	90	
Subtotal	0	0	0	0	40	50	90	90	40	50	90	90	0.0

	Ph.D. 2007		Total 2007	Total 2006	Masters 2007		Total 2007	Total 2006	Total Full-time 2007	Total Part-time 2007	Grand Total 2007	Grand Total 2006	Percent Change
	Full-time	Part-time			Full-time	Part-time							
Pharmacy													
Pharmacy	10	0	10	10	1	2	3	5	11	2	13	15	
Subtotal	10	0	10	10	1	2	3	5	11	2	13	15	-13.3
Science													
Botany	13	0	13	14	18	2	20	22	31	2	33	36	
Chemistry	17	0	17	21	19	3	22	17	36	3	39	38	
Computer Science	15	1	16	17	42	3	45	58	57	4	61	75	
Math, Comp, & Stat	0	0	0	0	0	0	0	1	0	0	0	1	
Mathematics	5	0	5	5	11	0	11	15	16	0	16	20	
Microbiology	16	0	16	18	11	0	11	8	27	0	27	26	
Physics and Astronomy	22	0	22	19	12	0	12	15	34	0	34	34	
Statistics	9	0	9	9	14	0	14	13	23	0	23	22	
Zoology	17	0	17	16	23	0	23	24	40	0	40	40	
Subtotal	114	1	115	119	150	8	158	173	264	9	273	292	-6.5
Social Work													
Social -Clinical Intervention	0	0	0	0	46	44	90	107	46	44	90	107	
Social Services Admin.	0	0	0	0	12	16	28	38	12	16	28	38	
Social Work	9	4	13	12	18	24	42	1	27	28	55	13	
Social Work Distance	0	0	0	0	4	16	20	28	4	16	20	28	
Subtotal	9	4	13	12	80	100	180	174	89	104	193	186	3.8
Total	769	56	825	753	1658	670	2328	2330	2427	726	3153	3083	2.3

1. Graduate figures include students continuing in a course or thesis over more than one term.
2. Occasional student category includes visiting graduate students.
3. In Fall 2007, there were 116 Joint Master's Program students in the programs shared by the University of Manitoba and the University of Winnipeg (114 in Fall 2006).
Based on workload calculations, the following JMPs have been reported under the University of Manitoba:

	Fall 2007		Fall 2006	
	FT	PT	FT	PT
In the Faculty of Arts				
History	36	7	39	6
Public Administration	18	14	29	0
Religion	7	0	6	0
Total	61	21	74	6

4. Public Administration previously reported under Graduate Studies.
5. Includes students in the Canadian Studies program at St. Boniface taking courses at the U. of M.
6. Includes students in the Education program at St. Boniface taking courses at the U. of M.
7. Applied Health Sciences is a new Ph.D. program in Fall 2007 offered jointly by Human Ecology, Kinesiology and Recreation Management, Nursing and the School of Medical Rehabilitation.
8. Interdisciplinary Ph.D. program in Cancer Control is shared between the Faculty of Nursing and the Department of Community Health Sciences.
9. Effective 2003, newly admitted students in interdisciplinary graduate programs will be reflected in the Faculty of their advisor.
10. The Faculty of Physical Education and Recreation Studies was renamed the Faculty of Kinesiology and Recreation Management in July 2007.
11. Community Health Sciences includes those students taking a Diploma in Population Health.

A Profile of Canadian Aboriginal Students¹ at The University of Manitoba

	Fall 2007		Fall 2006	
	<u>Total</u>	<u>% of Aboriginal Students</u>	<u>Total</u>	<u>% of Aboriginal Students</u>
Undergraduate Students	1513	91.8%	1464	92.8%
Graduate Students	127	7.7%	106	6.7%
Post Graduate Medical Education	8	0.5%	8	0.5%
Total	1648		1578	
% of Undergraduates	6.6%		6.3%	
% of University 1 class	7.1%		6.8%	
By Aboriginal Identity				
First Nations	789	47.9%	792	50.2%
Metis	836	50.7%	760	48.2%
Inuit	11	0.7%	15	1.0%
Identity not specified	12	0.7%	11	0.7%
By Sex				
Male	543	32.9%	499	31.6%
Female	1105	67.1%	1079	68.4%
By Full/Part Status				
Full-Time	1280	77.7%	1195	75.7%
Part-Time	368	22.3%	383	24.3%
By Type of Student				
New	420	25.5%	384	24.3%
Former	1228	74.5%	1194	75.7%
By Faculty/School				
Agric. & Food Sciences	11	0.7%	10	0.6%
Architecture	11	0.7%	13	0.8%
Art, School of	27	1.6%	24	1.5%
Arts	215	13.0%	229	14.5%
Business, Asper School of	39	2.4%	37	2.3%
Dental Hygiene	5	0.3%	4	0.3%
Dentistry	6	0.4%	4	0.3%
Education	20	1.2%	64	4.1%
Engineering	63	3.8%	53	3.4%
Environment, Earth, and Resources, Clayton H. Riddell Faculty of	25	1.5%	14	0.9%
Extended Education	112	6.8%	123	7.8%
Graduate Studies	127	7.7%	106	6.7%
Human Ecology	25	1.5%	19	1.2%
Kinesiology & Recreation Management	33	2.0%	21	1.3%
Law	19	1.2%	22	1.4%
Medical Rehabilitation	14	0.8%	12	0.8%
Medicine	14	0.8%	9	0.6%
Music	4	0.2%	4	0.3%
Nursing	103	6.3%	106	6.7%
Pharmacy	14	0.8%	12	0.8%
Post Graduate Medical Education	8	0.5%	8	0.5%
Science	107	6.5%	98	6.2%
Social Work	218	13.2%	200	12.7%
University 1	428	26.0%	386	24.5%

Notes:

- Aboriginal identity is self-declared on the Admission form. Because the self-declaration is voluntary, the numbers reported would be less than the total population of Canadian Aboriginal students on campus. Undergraduate data collection began in 2000-01. Data collection for graduate students began in 2002-03.

**Historical Comparison of Undergraduate Student Credit Hours
Taught by Faculties, Schools and Departments^{1,2,3}
As at November 1 - Fall Terms**

Faculty/School	Fall Term 2007	Fall Term 2006	% Change
			Fall Term 2006 - Fall Term 2007
Agricultural & Food Sciences			
Agriculture Diploma	2,237	2,180	2.6%
Agribusiness & Agric. Economics	840	894	-6.0%
Animal Science	441	513	-14.0%
Biosystems Engineering	732	808	-9.4%
Entomology	54	27	*
Food Science	831	660	25.9%
General Agriculture	567	549	3.2%
Plant Science	462	390	18.5%
Soil Science	291	273	6.6%
Subtotal	6,455	6,294	2.6%
Architecture			
Architecture	297	330	-10.0%
City Planning	0	0	*
Environmental Design	6,439	5,478	17.6%
Landscape Architecture	27	54	*
Subtotal	6,763	5,862	15.4%
Art, School of			
	5,071	5,554	-8.7%
Arts			
Anthropology	3,780	3,459	9.3%
Asian Studies	1,050	1,149	-8.6%
Canadian Studies	57	192	*
Catholic Studies	303	321	-5.6%
Classics	1,584	1,398	13.3%
Economics	7,803	8,454	-7.7%
English	7,455	7,947	-6.2%
Film Studies	1,431	1,326	7.9%
French, Spanish & Italian	2,406	2,595	-7.3%
German and Slavic Studies	777	858	-9.4%
Global Political Economy	60	63	*
History	5,922	6,570	-9.9%
Icelandic Studies	117	192	-39.1%
Interdisciplinary	2,112	1,962	7.6%
Labour and Workplace Studies	369	471	-21.7%
Linguistics	1,173	1,065	10.1%
Native Studies	2,355	2,439	-3.4%
Near Eastern & Judaic Studies	84	75	*
Philosophy	5,121	5,181	-1.2%
Political Studies	2,730	3,015	-9.5%
Psychology	17,682	18,405	-3.9%
Religion	2,679	2,784	-3.8%
Sociology	9,084	9,279	-2.1%
Theatre Studies	509	555	-8.4%
Women's Studies	897	972	-7.7%
Subtotal	77,540	80,727	-3.9%
Business, Asper School of			
Accounting & Finance	6,651	6,780	-1.9%
Actuarial Science	345	468	-26.3%
Business Administration	6,933	6,597	5.1%
Interdisciplinary	15	63	*
Supply Chain Management	1,731	1,776	-2.5%
Marketing	3,048	2,928	4.1%
Subtotal	18,723	18,612	0.6%
Dentistry			
Dental Hygiene	1,022	911	12.1%
Dental Diagnostic & Surgical Sciences	1,524	1,464	4.1%
Dentistry	804	822	-2.2%
Oral Biology	981	999	-1.8%
Preventive Dental Science	789	978	-19.3%
Restorative Dentistry	1,491	1,611	-7.4%
Subtotal	6,611	6,785	-2.6%
Education			
Curriculum, Teaching & Learning	6,248	7,711	-19.0%
Educational Admin., Foundations & Psychology	3,549	3,591	-1.2%
Subtotal	9,797	11,302	-13.3%

Faculty/School	Fall Term 2007	Fall Term 2006	% Change
			Fall Term 2006 - Fall Term 2007
Engineering			
Civil Engineering	3,611	3,266	10.6%
Electrical & Computer Engineering	3,347	3,461	-3.3%
Engineering	2,301	2,285	0.7%
Mechanical & Manufacturing Engineering	4,011	3,912	2.5%
Subtotal	13,270	12,924	2.7%
Environment, Earth, and Resources, Clayton H. Riddell Faculty of			
Environment and Geography	5,975	6,284	-4.9%
Geological Sciences	1,479	1,419	4.2%
Subtotal	7,454	7,703	-3.2%
Human Ecology			
Core Human Ecology	423	387	9.3%
Textile Sciences	451	573	-21.4%
Family Social Sciences	3,150	2,775	13.5%
Human Nutritional Sciences	4,413	4,562	-3.3%
Subtotal	8,437	8,297	1.7%
Kinesiology and Recreation Management⁴	5,833	5,497	6.1%
Law	4,636	4,963	-6.6%
Medicine			
Human Anatomy & Cell Science	150	150	0.0%
Biochemistry and Medical Genetics	78	75	*
Medical Microbiology	9	0	*
Medical Rehabilitation	1,359	1,069	27.1%
Physical Therapy	2,176	2,093	4.0%
Occupational Therapy	999	1,315	-24.1%
Respiratory Therapy	624	610	2.4%
Pharmacology & Therapeutics	174	195	-10.8%
Physiology	132	132	0.0%
Subtotal	5,701	5,638	1.1%
Music	2,604	2,667	-2.3%
Nursing	12,310	12,325	-0.1%
Pharmacy	2,635	2,577	2.2%
Science			
Biological Sciences ⁵	14,025	14,196	-1.2%
Chemistry	8,012	7,955	0.7%
Computer Science	8,058	8,367	-3.7%
Mathematics	12,954	13,228	-2.1%
Microbiology	4,941	4,626	6.8%
Physics & Astronomy	3,354	3,303	1.5%
Statistics	7,251	7,770	-6.7%
Subtotal	58,595	59,445	-1.4%
Social Work	5,906	6,066	-2.6%
On-Load	5,556	5,170	7.5%
Total	263,892	268,404	-1.7%

- This report includes all courses numbered 0400-6999. These courses include: (a) all distance education credit hours, including Independent Study (formerly correspondence), on-line web courses, Campus Manitoba and group based study; (b) all courses taught off-campus with stipend from other than faculty or school resources; (c) all "on-load" credit hours taught during the summer session.
- This report excludes credit hours declared as "Challenge for Credit" as well as all Inter-Universities Services courses.
- An asterisk (*) indicates that the number of credit hours were below 100 in either year. Changes in faculties containing less than 100 credit hours can show abnormally large differences, therefore these are not reported.
- The Faculty of Kinesiology and Recreation Management was formerly reported as the Faculty of Physical Education and Recreation Studies.
- The Department of Botany, the Department of Zoology, and the Introductory Biology Program merged into the Department of Biological Sciences in July 2007.

UNDERGRADUATE STUDENT CREDIT HOURS¹

Fall Term 2007
As at November 1

Taught By ²	Taught To																				Total					
	Agric. & F.S.	Arch.	Art. Sch. of	Arts	Bus.	Dent. Hyg.	Dent.	Educ.	Engin.	Enviro.	Ext. Educ.	Hum. Ecol.	Kines. & RecMgmt.	Law	Med. Reh.	Med.	Music	Nurs.	Pharm.	Sci.		Soc. Work	U1 ³	Pre-Masters	Grad. Stud.	
Agric. & F.S.	4,314			81	117				582	120	63	201	54							397		402	12	85	6,428	
Arch.	3	4,510	51	264	12				9	24	90	9								78		1,302	378	33	6,763	
Art. Sch. of	5		3,515	189					5	14	68	3	5				8			37		809		3	4,657	
Arts	399	57	680	23,988	1,545			84	618	504	2,573	438	324	3			309	315		5,787	615	31,859	315	210	70,622	
Business I.H. Asper Sch. of	291		3	1,377	13,752				171	15	252	267	57					9		960		918		651	18,723	
Education				21	3			8,774			105									3				150	9,056	
Engineering	7			3	9				12,089	4	117	3								215		702		85	13,234	
Environment - Clayton H. Riddell Fac. of	48	12	21	1,110	66			9	21	2,558	372	36	102				18			661		1,656		12	6,701	
Human Ecol.	60	15	9	828	126			24	6	42	341	3,740	138				6	174		699	24	2,013	12	9	8,266	
Kinesiology. & Rec. Mgmt.	18			288	102			9		18	91	81	3,852					30		177	27	1,131		9	5,833	
Law														4,633											3	4,636
Music				12				441		3	52						1,980			19		95		3	2,604	
Nursing	6			36							124	3						10,582		246		1,141			12,138	
Pharmacy																			2,635						2,635	
Science	789	15	39	3,450	1,482			18	4,112	591	1,218	528	405				36	285	360	19,701	27	23,124	18	135	56,333	
Social Work				66	3						207	12						12		6	3,506	228	84	54	4,178	
Total	5,939	4,609	4,317	31,713	17,217	0	0	9,359	17,612	3,892	5,672	5,321	4,937	4,636	0	0	2,357	11,407	2,995	28,985	4,199	65,379	819	1,442	232,803	

1. Includes all courses numbered 0400-6999. Does not include Distance Education courses and credit hours taught "on load" during the summer session.
 2. The faculties/schools of Medicine, Dentistry, Medical Rehabilitation and Dental Hygiene determine their workload by numbers of students instead of by credit hours. For that reason they are not included in the "Taught By" and the "% of Credit Hours Self-taught" calculations. They are included in the "Taught To" calculations since their students can take credit hours in other faculties/schools.
 3. University 1 (U1) is included in the "Taught To" category as students in this program take credit hours from other faculties/schools.

Analysis of Undergraduate Student Credit Hours^{1,2,3} - by Course Level
As at November 1 - Fall 2007

Faculty/School	Total Hours	Credit Hours - by Course Level				Proportion of Credit Hours - by Level			
		1000	2000	3000	4000 - 6999	1000	2000	3000	4000 - 6999
Agricultural & Food Sciences									
Agriculture Diploma	2,237	2,237				100%			
Agribusiness & Agric. Economics	840	348	75	297	120	41%	9%	35%	14%
Animal Science	441		246	135	60		56%	31%	14%
Biosystems Engineering	732		281	231	220		38%	32%	30%
Entomology	54		39		15		72%		28%
Food Science	831	261		60	510	31%		7%	61%
General Agriculture	540	336	141	57	6	62%	26%	11%	1%
Plant Science	462		132	249	81		29%	54%	18%
Soil Science	291			165	126			57%	43%
Subtotal - all	6,428	3,182	914	1,194	1,138	50%	14%	19%	18%
Subtotal - excl. Ag. Diploma	4,191	945	914	1,194	1,138	23%	22%	28%	27%
Architecture									
Architecture	297				297				100%
City Planning	0								
Environmental Design	6,439	3,832	1,150	1,458		60%	18%	23%	
Landscape Architecture	27				27				100%
Subtotal	6,763	3,832	1,150	1,458	324	57%	17%	22%	5%
Art, School of	4,657	2,071	1,473	605	509	44%	32%	13%	11%
Arts									
Anthropology	3,396	1,935	1,290	120	51	57%	38%	4%	2%
Asian Studies	1,050	639	348	63		61%	33%	6%	
Canadian Studies	3				3				100%
Catholic Studies	303	291	12			96%	4%		
Classics	1,470	696	726	48		47%	49%	3%	
Economics	7,362	4,125	2,271	780	186	56%	31%	11%	3%
English	6,864	4,890	1,254	627	93	71%	18%	9%	1%
Film Studies	1,431	678	246	507		47%	17%	35%	
French, Spanish & Italian	2,406	1,878	429	72	27	78%	18%	3%	1%
German and Slavic Studies	747	396	231	102	18	53%	31%	14%	2%
Global Political Economy	60		42		18		70%		30%
History	5,574	2,400	2,391	528	255	43%	43%	9%	5%
Icelandic Studies	117	15	75	12	15	13%	64%	10%	13%
Interdisciplinary	2,085	2,085				100%			
Labour and Workplace Studies	369	141	75	126	27	38%	20%	34%	7%
Linguistics	1,173	645	369	159		55%	31%	14%	
Native Studies	1,848	1,377	294	171	6	75%	16%	9%	0%
Near Eastern & Judaic Studies	84	66	6	12		79%	7%	14%	
Philosophy	4,662	3,003	1,590	15	54	64%	34%	0%	1%
Political Studies	2,394	669	993	414	318	28%	41%	17%	13%
Psychology	15,147	8,577	4,608	1,587	375	57%	30%	10%	2%
Religion	2,511	1,959	447	45	60	78%	18%	2%	2%
Sociology	8,277	4,938	2,214	969	156	60%	27%	12%	2%
Theatre Studies	509	249	215	45		49%	42%	9%	
Women's Studies	780	558	120	90	12	72%	15%	12%	2%
Subtotal	70,622	42,210	20,246	6,492	1,674	60%	29%	9%	2%
Business, Asper School of									
Accounting & Finance	6,651	2,349	1,908	1,602	792	35%	29%	24%	12%
Actuarial Science	345		75	114	156		22%	33%	45%
Business Administration	6,933		4,539	885	1,509		65%	13%	22%
Interdisciplinary	15				15				100%
Supply Chain Management	1,731		1,545	168	18		89%	10%	1%
Marketing	3,048		1,008	1,479	561		33%	49%	18%
Subtotal	18,723	2,349	9,075	4,248	3,051	13%	48%	23%	16%

Table 10

Faculty/School	Total Hours	Credit Hours - by Course Level				Proportion of Credit Hours - by Level			
		1000	2000	3000	4000 - 6999	1000	2000	3000	4000 - 6999
Education									
Curriculum, Teaching & Learning	6,248	2,815	3,202		231	45%	51%		4%
Educational Admin., Foundations & Psychology	2,808	1,104	831		873	39%	30%		31%
Subtotal	9,056	3,919	4,033	0	1,104	43%	45%	-	12%
Engineering									
Civil Engineering	3,611		788	1,247	1,576		22%	35%	44%
Electrical & Computer Engineering	3,347		678	1,128	1,541		20%	34%	46%
Engineering	2,265	2,007	258			89%	11%		
Mechanical & Manufacturing Engineering	4,011		1,435	1,221	1,355		36%	30%	34%
Subtotal	13,234	2,007	3,159	3,596	4,472	15%	24%	27%	34%
Environment, Earth, and Resources, Clayton H. Riddell Faculty of									
Environment and Geography	5,327	2,406	1,841	829	252	45%	35%	16%	5%
Geological Sciences	1,374	549	366	162	297	40%	27%	12%	22%
Subtotal	6,701	2,955	2,207	991	549	44%	33%	15%	8%
Human Ecology									
Core Human Ecology	423		399		24		94%		6%
Textile Sciences	451	147	107	60	137	33%	24%	13%	30%
Family Social Sciences	2,979	1,686	270	606	417	57%	9%	20%	14%
Human Nutritional Sciences	4,413	2,532	597	708	576	57%	14%	16%	13%
Subtotal	8,266	4,365	1,373	1,374	1,154	53%	17%	17%	14%
Kinesiology and Recreation Management³	5,833	2,311	1,648	1,539	335	40%	28%	26%	6%
Law	4,636	1,796	1,079	1,761	0	39%	23%	38%	-
Music	2,604	772	639	693	501	30%	25%	27%	19%
Nursing	12,138	1,575	3,263	3,376	3,924	13%	27%	28%	32%
Pharmacy	2,635	175	466	890	1,104	7%	18%	34%	42%
Science									
Biological Sciences ⁴	13,644	9,051	3,213	1,065	315	66%	24%	8%	2%
Chemistry	8,012	4,107	3,450	135	320	51%	43%	2%	4%
Computer Science	7,587	4,596	1,179	1,266	546	61%	16%	17%	7%
Mathematics	12,408	9,609	1,791	984	24	77%	14%	8%	0%
Microbiology	4,449	747	1,779	1,317	606	17%	40%	30%	14%
Physics & Astronomy	3,354	2,985	201	129	39	89%	6%	4%	1%
Statistics	6,879	4,968	1,371	339	201	72%	20%	5%	3%
Subtotal	56,333	36,063	12,984	5,235	2,051	64%	23%	9%	4%
Social Work	4,178	513	711	1,188	1,766	12%	17%	28%	42%
Total	232,803	110,094	64,418	34,638	23,654	47%	28%	15%	10%

1. Includes all courses numbered 0400-6999. Does not include Distance Education courses and credit hours taught "on load" during the summer session.
2. The faculties/schools of Medicine, Dentistry, Medical Rehabilitation and Dental Hygiene determine their workload by numbers of students instead of by credit hours. For that reason they are not included in this report.
3. The Faculty of Kinesiology and Recreation Management was formerly reported as the Faculty of Physical Education and Recreation Studies.
4. The Department of Botany, the Department of Zoology, and the Introductory Biology Program merged into the Department of Biological Sciences in July 2007.

DISTRIBUTION OF INTERNATIONAL STUDENTS BY FACULTY/SCHOOL¹
Fall Term 2006 and 2007
(As at November 1)

FACULTY/SCHOOL	Fall 2007			Fall 2006			% Change 2006 to 2007
	Full	Part	Total	Full	Part	Total	
Agric. & Food Sci.							
Degree							
Undergraduate	39	1	40	35	5	40	0.0
Graduate	94	0	94	89	2	91	3.3
Diploma							
Undergraduate	0	0	0	2	0	2	*
Subtotal	133	1	134	126	7	133	0.8
Architecture							
Undergraduate	16	0	16	22	1	23	-30.4
Graduate	8	0	8	15	0	15	*
Subtotal	24	0	24	37	1	38	-36.8
Art, School of							
Undergraduate	23	1	24	15	6	21	14.3
Subtotal	23	1	24	15	6	21	14.3
Arts							
Undergraduate ²	341	62	403	402	54	456	-11.6
Graduate	42	3	45	60	2	62	-27.4
Subtotal	383	65	448	462	56	518	-13.5
Business, Asper School of							
Undergraduate	262	13	275	299	18	317	-13.2
Graduate	11	1	12	3	0	3	*
Subtotal	273	14	287	302	18	320	-10.3
Dentistry							
Undergraduate ³	1	0	1	1	0	1	0.0
Graduate	5	0	5	6	0	6	*
Subtotal	6	0	6	7	0	7	*
Education^{4,5}							
Undergraduate	0	1	1	3	0	3	*
Graduate	13	1	14	13	0	13	7.7
Subtotal	13	2	15	16	0	16	-6.3
Engineering							
Undergraduate	166	23	189	138	23	161	17.4
Graduate	105	2	107	106	1	107	0.0
Subtotal	271	25	296	244	24	268	10.4
Environment, Earth, and Resources Clayton H. Riddell Faculty of							
Undergraduate	21	15	36	17	11	28	28.6
Graduate	30	3	33	25	0	25	32.0
Subtotal	51	18	69	42	11	53	30.2
Extended Education							
Undergraduate	24	25	49	29	26	55	-10.9
Subtotal	24	25	49	29	26	55	-10.9
Graduate Studies - Interdisciplinary							
Graduate	12	0	12	8	0	8	*
Subtotal	12	0	12	8	0	8	*
Human Ecology⁴							
Undergraduate	34	2	36	30	1	31	16.1
Graduate	7	0	7	5	0	5	*
Subtotal	41	2	43	35	1	36	19.4
Kinesiology and Recreation Management⁶							
Undergraduate	4	0	4	4	1	5	*
Graduate	3	0	3	4	0	4	*
Subtotal	7	0	7	8	1	9	*
Law							
Undergraduate	0	0	0	0	0	0	0.0
Graduate	1	0	1	1	0	1	0.0
Subtotal	1	0	1	1	0	1	0.0
Medicine							
Medicine							
Undergraduate	0	0	0	0	0	0	0.0
Graduate	48	0	48	49	1	50	-4.0
Medical Rehabilitation							
Undergraduate	0	0	0	0	0	0	0.0
Graduate	4	0	4	4	0	4	0.0
Subtotal	52	0	52	53	1	54	-3.7
Music⁵							
Undergraduate	1	1	2	3	1	4	*
Graduate	1	0	1	2	0	2	*
Subtotal	2	1	3	5	1	6	*
Nursing							
Undergraduate	32	3	35	19	2	21	66.7
Graduate	0	0	0	0	0	0	
Subtotal	32	3	35	19	2	21	66.7
Pharmacy							
Undergraduate	0	0	0	0	0	0	0.0
Graduate	3	0	3	4	0	4	*
Subtotal	3	0	3	4	0	4	*

FACULTY/SCHOOL	Fall 2007			Fall 2006			% Change 2006 to 2007	
	Full	Part	Total	Full	Part	Total		
Science	Undergraduate	249	24	273	288	66	354	-22.9
	Graduate	75	2	77	92	3	95	-18.9
	Subtotal	324	26	350	380	69	449	-22.0
Social Work	Undergraduate	4	1	5	3	0	3	*
	Graduate	4	1	5	5	1	6	*
	Subtotal	8	2	10	8	1	9	*
University 1	Undergraduate	407	55	462	441	55	496	-6.9
	Subtotal	407	55	462	441	55	496	-6.9
OTHERS⁷	Undergraduate	9	0	9	8	0	8	*
Total Undergraduate		1633	227	1860	1759	270	2029	-8.3
Total Graduate		466	13	479	491	10	501	-4.4
Total		2099	240	2339	2250	280	2530	-7.5
P.G.M.E.⁸		84	0	84	72	0	72	16.7
Grand Totals		2183	240	2423	2322	280	2602	-6.9

1. Includes Joint Master's students from both the University of Manitoba and the University of Winnipeg, and Distance Education students.

2. Includes Master's of Public Administration students.

3. Includes students enrolled in the International Dentist Degree Program.

4. Students who are enrolled in the integrated B.Hum.Ecol/B.Educ. Program are shown in the Faculty of Human Ecology for years 3 and 4 and in Education for year 5.

5. Enrolment in the old integrated B.Music/B.Educ. Program is shown in Music for years 2 & 3, and in Education for years 4 & 5. In the revised program, enrolment is shown in Music for years 3 & 4 and in Education for year 5.

6. Kinesiology and Recreation Management formerly reported as Physical Education and Recreation Studies.

7. Includes all undergraduate students in specifically arranged programs.

8. Post-Graduate Medical Education Students.

* Percentages not shown due to low numbers of students.

**DEGREES, DIPLOMAS AND CERTIFICATES CONFERRED¹
BY FACULTY, UNDERGRADUATE AND GRADUATE**

	2007		2006		2005		2004		2003	
	U.	G.	U.	G.	U.	G.	U.	G.	U.	G.
Honorary	-	10	-	8	-	6	-	8	-	7
Agric. & Food Sciences	125	49	99	41	92	47	119	40	121	48
Architecture	100	85	80	59	84	47	82	52	87	45
Art, School of	87	-	67	-	67	-	69	-	59	-
Arts ^{2,3,4}	1012	113	1010	127	954	116	965	102	926	97
Business, Asper School of ²	401	43	437	51	468	51	442	40	403	59
Dentistry										
Dentistry	43	11	41	7	37	7	33	9	22	4
Dental Hygiene	27	-	24	0	24	-	26	-	26	-
Education ²	450	83	558	73	508	67	493	63	432	71
Engineering	155	72	181	67	154	90	185	81	156	53
Environment, Earth, And Resources										
Clayton H. Riddell, Faculty of ⁴	89	24	108	18	78	23	34	16	-	-
Extended Education ⁵										
Aboriginal Child & Family Services	9	-	20	-	18	-	22	-	-	-
Community Wellness	6	-	3	-	5	-	8	-	5	-
Graduate Studies										
Disability Studies ⁶	-	2	-	1	-	1	-	-	-	-
Foods & Nutrl. Sciences	-	4	-	6	-	4	-	1	-	1
Interdisciplinary	-	2	-	2	-	5	-	6	-	8
Human Ecology	118	10	116	11	85	18	91	13	60	8
Kinesiology and Recreation Management ⁷	117	6	121	8	98	11	108	7	110	4
Law	84	1	74	3	84	5	96	6	77	0
Medicine										
Medicine	105	59	118	67	113	63	99	61	100	43
Medical Rehabilitation	62	47	54	45	54	24	82	0	57	0
Music	39	9	28	11	36	5	21	10	30	1
Natural Resources Inst. ⁴	-	-	-	11	-	-	-	-	-	11
Nursing	320	27	327	18	374	20	377	19	380	14
Pharmacy	43	8	49	4	45	9	43	0	47	1
Science ^{2,4}	517	67	475	60	491	59	483	56	502	51
Social Work	143	27	175	31	137	18	131	35	130	29
TOTAL	4052	759	4165	729	4006	696	4009	625	3730	555
	4811		4894		4702		4634		4285	

1. The reporting of degrees based on a calendar year (February, May and October graduands).

2. Includes degrees and certificates conferred at St. Boniface College.

3. Includes Master of Public Administration degrees previously reported under Graduate Studies.

4. Faculty of Environment new in 2003; renamed to the Clayton H. Riddell Faculty of Environment, Earth, and Resources in 2004. Clayton H. Riddell Faculty of Environment, Earth, and Resources contains some degrees previously reported under the Faculty of Arts and the Faculty of Science, as well as all degrees previously reported under Natural Resources Institute.

5. Continuing Education was renamed Extended Education in 2006.

6. Disability Studies new in 2003-2004.

7. The Faculty of Physical Education and Recreation Studies changed its name in 2007 to the Faculty of Kinesiology and Recreation Management.

UNDERGRADUATE AVERAGE PROGRAM COST¹
2003-2004 to 2005-2006
Excludes Amortization of Capital Assets

Program/Faculty	Diploma	Degrees					
		2-Year	3-Year	4-Year	4-Year Advanced	4-Year Honours	5-Year Integrated
Agricultural & Food Sciences	55,112			95,489			
Architecture							
Environmental Design			20,016				
Art, School of							
History			31,289	41,604			
Studio			34,384	46,762			
Arts			21,706		28,941	26,047	
Business, Asper School of			32,288				
Dentistry							
Dentistry ²				324,709			
Dental Hygiene ³	109,367						
Education							
Education 2-Year		20,711					
Human Ecology/Education Integrated							46,201
Music/Education Integrated							111,391
Engineering				55,052			
Environment, Earth, and Resources,			29,129		38,838	38,838	
Clayton H. Riddell Faculty of ⁴							
Human Ecology				37,088			
Law			62,947				
Medicine							
Medicine ²				190,882			
Medical Rehabilitation			52,725				
Respiratory Therapy			40,867				
Music				102,077			
Nursing		16,316		48,947			
Pharmacy				76,263			
Physical Education & Recreation Studies							
Physical Education			46,291				
Recreation Studies				58,736			
Exercise and Sport Science				54,638			
Science			23,977		31,281	31,281	
Social Work		32,701	44,501				

1. Program costs are calculated by multiplying the average cost per credit hour in a given faculty by the number of credit hours required to attain a degree.

The number of credit hours that are required for a degree are taken from the General Calendar.

2. The cost for programs in the faculties of Dentistry and Medicine are calculated by multiplying the cost per standard student by the number of years required to attain a degree.

3. The Diploma program in Dental Hygiene is a two-year program but requires a qualifying year in the Faculties of Arts or Science. These costs reflect the two-year component.

4. Due to the diversity of degrees available through the Clayton H. Riddell Faculty of Environment, Earth, and Resources, these program costs are an approximation based on 90 credit hours for a three-year degree and 120 credit hours for a four-year degree.

Source of Data: Annual Financial Report March 31

Graduate Total Cost Per FTE Student¹
Excludes Amortization of Capital Assets

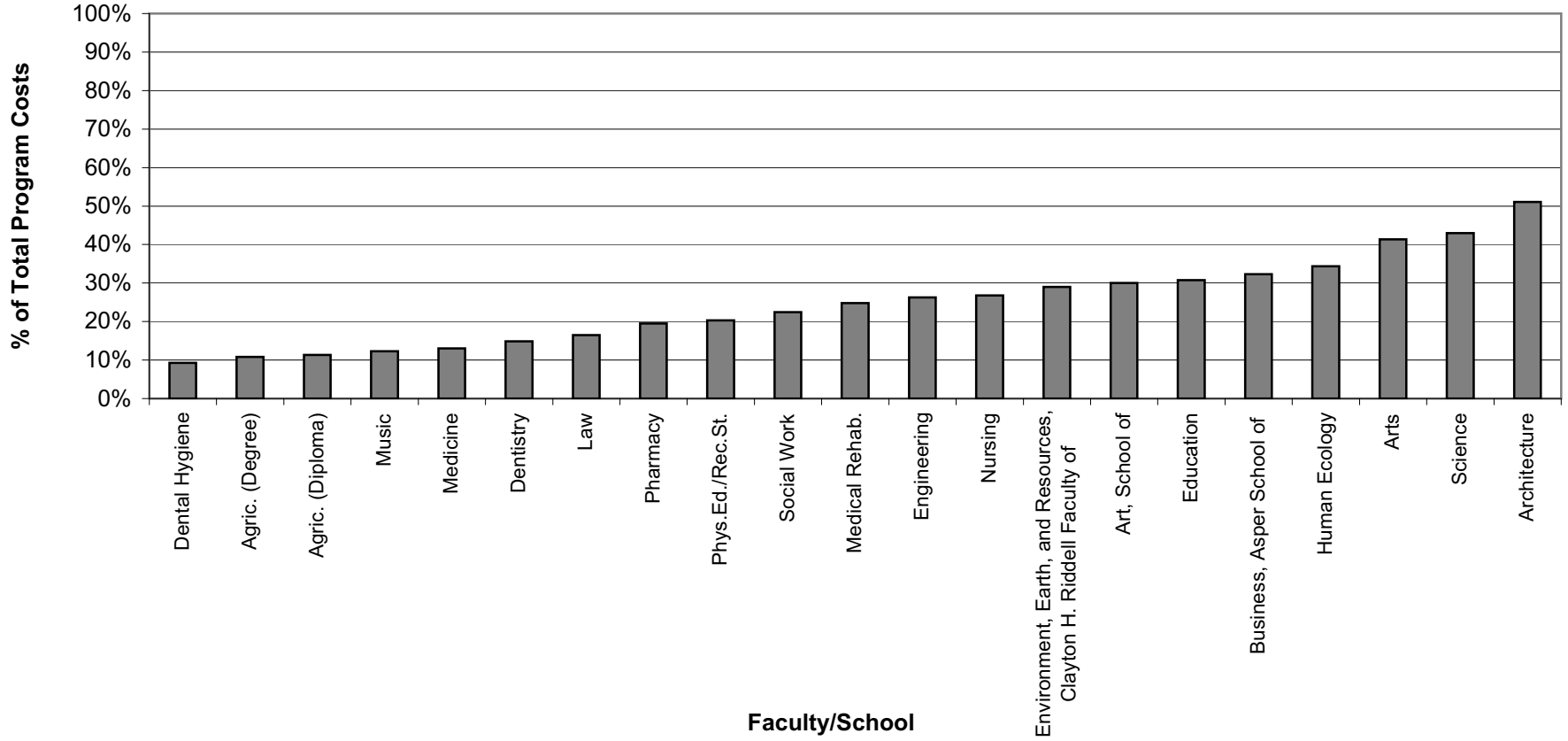
	2005-2006		2004-2005	
Agricultural & Food Sciences:				
Agribusiness & Agricultural Economics	\$	35,716	\$	37,413
Biosystems Engineering		40,199		42,283
Animal Science		76,033		79,161
Entomology		54,624		48,944
Food Science		49,775		57,399
Plant Science		91,849		82,791
Soil Science		52,531		53,883
Total	\$	58,326	\$	60,917
Architecture:				
Architecture	\$	27,637	\$	26,032
Total	\$	27,637	\$	26,032
Arts:				
Anthropology	\$	23,232	\$	24,369
Classics		30,096		26,643
Economics		20,761		19,762
English		24,938		23,558
French, Spanish and Italian		29,091		28,718
German and Slavic Studies		57,326		50,223
History		23,665		23,697
Icelandic Studies		72,418		32,726
Linguistics		37,504		38,856
Native Studies		20,878		18,967
Philosophy		17,540		17,130
Political Studies		22,480		28,355
Psychology		18,409		18,312
Religion		17,080		13,557
Sociology		20,844		18,429
Total	\$	22,035	\$	21,747
Business, Asper School of:²				
Accounting and Finance	\$	29,112	\$	26,513
Actuarial Sciences				
Business Administration		15,390		17,293
Marketing		16,135		42,862
Supply Chain Management		8,054		15,314
Total	\$	15,824	\$	17,977
Dentistry:				
Anatomy Section	\$	32,598	\$	38,169
Preventive Dental Science		51,920		56,659
Centre for Community Oral Health		101,430		57,913
Oral Biology		37,486		40,466
Restorative Dentistry		506,854		542,240
Dental Diagnostic and Surgical Sciences		33,767		22,489
Total	\$	68,517	\$	63,271

	2005-2006	2004-2005
Education:		
Curriculum: Teaching and Learning	\$ 24,458	\$ 24,167
Interdisciplinary Master	77,848	101,964
Educational Admin., Foundations and Psychology	25,299	26,722
Total	\$ 28,933	\$ 30,626
Engineering:		
Civil Engineering	\$ 36,114	\$ 37,872
Electrical and Computer Engineering	32,523	27,195
Mechanical and Manufacturing Engineering	39,064	34,346
Total	\$ 35,068	\$ 31,722
Environment, Earth, and Resources, Clayton H. Riddell Faculty of:		
Environment and Geography	\$ 26,122	\$ 24,568
Geological Sciences	68,570	73,380
Natural Resources Institute	22,696	21,450
Total	\$ 27,832	\$ 27,940
Human Ecology:		
Textile Sciences	\$ 58,298	\$ 38,136
Family Social Sciences	26,345	22,411
Human Nutritional Sciences	19,564	23,388
Total	\$ 23,993	\$ 23,456
Law:		
Law	\$ 56,665	\$ 49,427
Total	\$ 56,665	\$ 49,427
Medicine:³		
Centre for the Advancement of Medicine	\$ 253,248	\$ 249,161
Anaesthetics	1,030,514	925,131
Human Anatomy and Cell Science	72,297	61,600
Biochemistry and Molecular Biology	107,152	95,424
Clinical Health Psychology	256,878	219,595
Community Health Sciences	57,949	51,323
Immunology	51,916	83,527
Internal Medicine	4,957,660	4,398,538
Microbiology - Medicine	27,759	28,211
Obstetrics and Gynecology	1,294,391	1,144,893
Ophthalmology	75,349	73,408
Otolaryngology	296,450	237,625
Paediatrics and Child Health	2,046,958	1,927,469
Pathology	253,964	129,701
Pharmacology and Therapeutics	115,639	103,428
Physiology	75,300	57,637
Psychiatry	1,141,222	917,852
Radiology	526,469	442,881
School of Medical Rehabilitation	33,951	34,516
Surgery	1,120,144	805,998
Total	\$ 96,094	\$ 89,192

	2005-2006	2004-2005
Music:		
Music	\$ 41,295	\$ 41,552
Total	<u>\$ 41,295</u>	<u>\$ 41,552</u>
Nursing:		
Nursing	\$ 25,325	\$ 23,770
Total	<u>\$ 25,325</u>	<u>\$ 23,770</u>
Pharmacy:		
Pharmacy	\$ 46,097	\$ 42,117
Total	<u>\$ 46,097</u>	<u>\$ 42,117</u>
Physical Education and Recreation Studies:		
Physical Education and Recreation Studies	\$ 39,773	\$ 39,589
Total	<u>\$ 39,773</u>	<u>\$ 39,589</u>
Science:		
Botany	\$ 38,783	\$ 50,838
Chemistry	30,043	32,256
Computer Science	26,112	22,643
Mathematics	22,315	22,199
Microbiology	26,692	25,702
Physics and Astronomy	46,429	47,665
Statistics	16,377	15,521
Zoology	30,748	31,021
Total	<u>\$ 30,397</u>	<u>\$ 30,474</u>
Social Work:		
Social Work	\$ 14,424	\$ 15,315
Total	<u>\$ 14,424</u>	<u>\$ 15,315</u>
University Total:	<u><u>\$ 40,077</u></u>	<u><u>\$ 38,703</u></u>

1. The cost per FTE student is, by definition, sensitive to the number of FTE students within a given faculty in any given year. Much of the variation in the costs between years can be attributed to the normal fluctuation in student counts. As such, programs of study with smaller numbers of graduate students may record higher degrees of volatility in costs between years as compared to programs with larger populations. Also, graduate programs of study that do not have graduate students will show the entire allocated cost.
2. A methodology change in calculating the graduate program costs in the I.H. Asper School of Business was implemented in 2004-2005. These new program costs should not be compared to those shown in previous years.
3. Graduate FTE students in the Faculty of Medicine do not include Post Graduate Medical Education (P.G.M.E.) students.

REBATED TUITION FEES AS A PERCENTAGE OF TOTAL PROGRAM COSTS¹ 2005-2006



1. Program Fees and Total Program Costs are used for the Faculties of Dentistry and Medicine, and for the School of Dental Hygiene.

FULL-TIME EQUIVALENT ACADEMIC AND SUPPORT STAFF BASELINE POSITIONS¹

Operating Funds (As at April 1)

FACULTY/SCHOOL	2007-2008			2006-2007		
	ACADEMIC ²	SUPPORT	TOTAL	ACADEMIC ²	SUPPORT	TOTAL
Agricultural and Food Sciences - Faculty of	80.57	70.03	150.60	76.66	77.59	154.25
Architecture - Faculty of	48.62	17.18	65.80	41.00	16.86	57.86
Arts - Faculty of	242.33	67.65	309.98	278.44	66.21	344.65
Art - School of	23.67	8.57	32.24	22.67	8.68	31.35
Business - I.H. Asper School of	58.74	36.65	95.39	59.47	37.21	96.68
Dentistry - Faculty of	44.04	69.45	113.49	52.08	72.88	124.96
Education - Faculty of	52.19	26.64	78.83	57.03	26.17	83.20
Engineering - Faculty of	84.78	50.00	134.78	89.54	48.35	137.89
Environment, Earth, and Resources - Clayton H. Riddell Faculty of	44.11	24.80	68.91	43.28	24.79	68.07
Graduate Studies - Faculty of ³	3.00	2.00	5.00	3.00	1.00	4.00
Human Ecology - Faculty of	19.70	11.13	30.83	24.85	10.93	35.78
Kinesiology and Recreation Management - Faculty of	19.40	6.17	25.57	20.40	6.99	27.39
Law - Faculty of	22.80	15.20	38.00	23.50	15.27	38.77
Medicine - Faculty of	209.88	124.04	333.92	216.13	126.38	342.51
Music - Faculty of	26.89	5.00	31.89	29.65	5.99	35.64
Nursing - Faculty of	101.00	22.90	123.90	98.50	22.90	121.40
Pharmacy - Faculty of	19.00	8.05	27.05	19.74	9.13	28.87
Science - Faculty of	199.75	72.62	272.37	196.91	73.24	270.15
Social Work - Faculty of	44.35	17.80	62.15	47.00	19.00	66.00
University 1	8.48	16.74	25.22	9.22	17.00	26.22
Faculty/School Summary⁴	1353.30	672.62	2025.92	1409.07	686.57	2095.64

FULL-TIME EQUIVALENT ACADEMIC AND SUPPORT STAFF BASELINE POSITIONS¹
 Operating Funds (As at April 1)

	2007-2008			2006-2007		
	ACADEMIC ²	SUPPORT	TOTAL	ACADEMIC ²	SUPPORT	TOTAL
ACADEMIC SUPPORT AND ADMINISTRATIVE UNITS						
President	1.00	11.57	12.57	1.00	11.35	12.35
Vice-President(Academic) and Provost	368.96	439.60	808.56	305.20	520.99	826.19
Vice-President(Administration)	0.00	756.45	756.45	0.00	695.33	695.33
Vice-President(External)	0.00	56.30	56.30	0.00	53.10	53.10
Vice-President(Research)	1.70	40.89	42.59	2.70	39.04	41.74
Miscellaneous ⁵						6.04
Academic Support & Administrative Units Summary	371.66	1304.81	1676.47	308.90	1319.81	1634.75
University Totals (excludes Ancillary Services)	1724.96	1977.43	3702.39	1717.97	2006.38	3730.39
Ancillary Services	0.00	127.93	127.93	0.00	131.60	131.60
University Totals (includes Ancillary Services)	1724.96	2105.36	3830.32	1717.97	2137.98	3861.99

1. For the purposes of calculating FTE positions, full-time is defined as a continuous twelve-month appointment, and part-time as either a sessional appointment less than 12 months, or casual. In Medicine, 'Geographic Full-Time' (G.F.T.) are included in full-time.
2. Includes academic librarians.
3. The administrative FTE component of Graduate Studies is included under 'Vice-President(Academic) and Provost' in the 'Academic Support and Administrative Units' section.
4. FTE's associated with scholarships, fellowships, and research grants are excluded.
5. 6.04 FTE's could not be identified during the recasting of the 'Academic Support and Administrative Units' for 2006-2007.

FULL-TIME EQUIVALENT (FTE) ACADEMIC AND SUPPORT STAFF BASELINE POSITIONS¹
Fiscal Year 2006-2007 & 2007-2008 (as at April 1), Operating Funds
Summary Report

	<u>2007-2008</u> <u>FTE</u>	<u>2006-2007</u> <u>FTE²</u>	<u>% Change</u>
Academic Staff³			
Academics -- teaching units			
Professorial Ranks	1,012.49	1,045.48	-3.2%
Lecturers	13.67	18.12	-24.6%
Instructors	199.12	219.75	-9.4%
Strategic Initiative Fund	63.47	60.74	4.5%
Subtotal	1,288.75	1,344.09	-4.1%
Special Academics	128.02	125.72	1.8%
Total Academics -- teaching units	1,416.77	1,469.81	-3.6%
Academics -- non-teaching units			
Professorial Ranks	25.75	24.75	4.0%
Instructors	177.01	123.34	43.5%
Subtotal	202.76	148.09	36.9%
Special Academics	43.56	40.77	6.8%
Total Academics -- non-teaching units	246.32	188.86	30.4%
Total Academic Staff	1,663.09	1,658.67	0.3%
Support Staff			
Total Support -- teaching units	672.62	685.57	-1.9%
Support -- non-teaching units			
Support Staff	1,304.81	1,324.65	-1.5%
Academic Librarians	61.87	61.50	0.6%
Total Support -- non-teaching units	1,366.68	1,386.15	-1.4%
Total Support Staff	2,039.30	2,071.72	-1.6%
Total Acad. and Support Staff	3,702.39	3,730.39	-0.8%
Ancillary Services Staff			
Total Ancillary Services Staff	127.93	131.60	-2.8%
Total University Staff (incl. Ancillary Services)	3,830.32	3,861.99	-0.8%

1. For the purposes of calculating FTE positions, full-time is defined as a continuous twelve month appointment, and part-time as either a sessional appointment (less than twelve months), or casual. In Medicine, 'Geographic Full-Time' (GFT) are included in full-time.
2. The 2006-2007 data marks the introduction of the Aurora Financial Management Information System (FMIS). Given that 2006-2007 was the transition year from the IMS system, the data that are reflected within each grouping on this table are only roughly comparable to 2007-2008.
3. FTE's associated with scholarships, fellowships, and research grants are excluded.

Ratio of Undergraduate Students to Staff¹
U of M and Ontario Methodologies
 By Faculty/School and Department
 2006-2007

	U of M ²	Ontario ²
Agricultural & Food Sciences		
Agribusiness & Agricultural Economics	10.4	9.4
Animal Science	3.3	3.0
Biosystems Engineering	5.6	4.4
Entomology	4.0	3.6
Food Science	4.4	4.4
Plant Science	3.1	3.7
Soil Science	3.6	3.0
Total Faculty/School³	5.7	5.6
Architecture		
Total Faculty/School	8.0	7.5
Art, School of		
Total Faculty/School	13.7	14.8
Arts		
Anthropology	22.4	19.6
Asian Studies	25.0	23.9
Classics	16.7	15.6
Economics ⁴	20.8	22.6
English ⁵	18.9	16.1
French, Spanish & Italian	12.2	11.4
German and Slavic Studies	8.1	6.7
History ⁶	16.0	15.8
Icelandic Studies	8.9	4.7
Linguistics ⁷	11.2	10.2
Native Studies	26.8	28.0
Philosophy	24.1	27.4
Political St.	16.2	14.5
Psychology	29.3	26.9
Religion ⁸	31.6	24.1
Sociology	25.8	24.5
Women's Studies ⁹	32.7	
Total Faculty/School	19.9	20.9
Business, Asper School of		
Accounting & Finance	19.7	19.9
Actuarial & Management Science	13.8	12.4
Business Administration	28.0	22.8
Supply Chain Management	18.7	16.4
Marketing	14.8	14.3
Total Faculty/School	20.6	18.6

	U of M ²	Ontario ²
Dentistry		
Total Faculty/School ¹⁰	3.6	3.7
Education		
Curric., Teaching & Learning	19.3	16.2
Educ. Admin., Found. & Psych.	10.9	9.6
Total Faculty/School	12.2	13.2
Engineering		
Civil & Geological	8.9	7.9
Elect. & Computer	6.2	5.5
Mech. & Manufacturing	7.8	7.1
Total Faculty/School	8.5	8.1
Environment, Earth, and Resources - Clayton H. Riddell		
Geological Sciences	8.5	7.2
Environment and Geography	20.7	20.2
Total Faculty/School	12.9	12.7
Human Ecology		
Textile Sciences	10.4	6.9
Family Social Sciences	18.4	17.5
Human Nutritional Sciences	28.1	26.3
Total Faculty/School	22.0	20.6
Kinesiology & Recreation Management		
Total Faculty/School	16.9	20.0
Law		
Total Faculty/School	12.8	11.4
Medicine		
Total Faculty/School ¹¹	3.0	3.3
Music		
Total Faculty/School	6.4	6.1
Nursing		
Total Faculty/School	12.5	11.4
Pharmacy		
Total Faculty/School	7.8	8.8
Science		
Biological Sciences	27.4	28.2
Chemistry	23.8	21.9
Computer Science	17.4	19.3
Mathematics	27.7	27.6
Microbiology	22.6	21.0
Physics & Astronomy	9.3	10.3
Statistics	31.3	33.7
Total Faculty/School	22.7	23.5

	U of M ²	Ontario ²
Social Work		
Total Faculty/School	9.1	9.7
University of Manitoba	13.0	13.7
University of Manitoba (Excluding Dentistry & Medicine)	15.6	15.9

1. Faculty that are associated with the Dean's office or General Faculty are not reflected in any specific department, however they are included in the faculty and school totals.
2. Both the U of M and Ontario methodologies use the same FTE student count as the dividend in the respective calculations. The difference in the two methods is found in the divisor. In the U of M method, the divisor is an FTE academic staff count taken from the 2006-2007 Budget Book. The Ontario method uses an FTE academic staff count that is derived by dividing the academic expenditures within a department by the Statistics Canada Full-Time Teaching Staff Average Salary for that department.
3. The totals for the Faculty of Agricultural and Food Sciences include resources that were used to teach general core courses to all students in the various programs. These general courses are not associated with any specific department, therefore they are not shown as a separate line in the table.
4. Economics includes Labour Studies.
5. English includes Theatre and Film Studies.
6. History includes Canadian Studies.
7. Linguistics includes Near Eastern and Judaic Studies.
8. Religion includes Catholic Studies.
9. A ratio for Women's Studies was not available for the Ontario Method because a separate departmental listing does not exist in the 2007 Annual Financial Report (the Annual Financial Report is used to calculate FTE academic staff in the Ontario Method).
10. Total includes all students in undergraduate Dentistry and Dental Hygiene programs as well as all B.Sc. Dentistry students.
11. Total includes all students in undergraduate Medicine and Medical Rehabilitation programs as well as all B.Sc. Medicine students.

**Ratio of Graduate Standard Students to FTE Academic Staff
2006-2007**

Faculty/School	Graduate Standard Students ¹	FTE Academic Staff	Ratio
Agricultural and Food Sciences	181	72.7	2.5
Architecture	133	41.0	3.2
Arts ²	350	260.5	1.3
Business, Asper School of	97	59.2	1.6
Dentistry	19	52.1	0.4
Education	263	56.0	4.7
Engineering	238	70.8	3.4
Environment, Earth, and Resources, Clayton H. Riddell Faculty of	130	40.6	3.2
Human Ecology	26	24.9	1.0
Kinesiology & Recreation Management	24	19.3	1.2
Law	4	22.5	0.2
Medical Rehabilitation	119	34.5	3.5
Medicine	214	175.4	1.2
Music	18	27.2	0.7
Nursing	53	64.0	0.8
Pharmacy	12	19.2	0.6
Science	216	168.0	1.3
Social Work	109	45.0	2.4
Other ³	42		
U of M Total ⁴	2,248	1,252.7	1.8
U of M Total excluding Dentistry and Medicine ⁴	2,015	1,025.1	2.0

1. Does not include pre-master's, diploma, occasional students or post-graduate medical education students.

2. Includes 61 standard students in the joint master's programs in History, Religion and Public Administration.

3. 'Other' includes programs that are interdisciplinary in nature and as such are not associated with any one specific department within the Faculty of Graduate Studies. The 'Other' category includes:

Foods and Nutritional Sciences - 13

Interdisciplinary - 6

Disability Studies - 14

Cancer Control - 1

Peace and Conflict Studies - 8

4. The U of M Total and U of M Total excluding Dentistry and Medicine include the 'Other' category.

RESEARCH REVENUES FROM EXTERNAL SOURCES¹
per FULL-TIME EQUIVALENT STAFF²
by FACULTY/SCHOOL/UNIT
as at March 31

Faculty/School/Unit	2007			2006			2005			2004		
	Revenues	FTE Staff	\$/F.T.E. Staff	Revenues	FTE Staff	\$/F.T.E. Staff	Revenues	FTE Staff	\$/F.T.E. Staff	Revenues	FTE Staff	\$/F.T.E. Staff
Agricultural & Food Sciences	\$ 9,942,321	72.68	\$ 136,796	\$ 10,702,474	71.68	\$ 149,309	\$ 7,268,009	72.06	\$ 100,861	\$ 7,175,255	70.10	\$ 102,357
Architecture	162,288	41	3,958	156,668	39.00	4,017	37,858	39.00	971	146,504	39.00	3,757
Arts	3,746,571	260.5	14,382	2,890,143	252.82	11,432	1,960,018	242.11	8,096	2,251,260	244.57	9,205
Art, School of	25,552	22.67	1,127	41,733	22.67	1,841	34,218	22.67	1,509	27,475	19.06	1,442
Business, Asper School of	963,894	59.16	16,293	923,711	55.89	16,527	670,999	58.53	11,464	814,263	54.38	14,974
Dentistry	801,251	52.08	15,385	595,147	50.18	11,860	548,288	48.91	11,210	325,921	49.70	6,558
Education	870,856	55.98	15,557	1,026,970	50.81	20,212	703,686	48.53	14,500	591,508	50.03	11,823
Engineering	11,075,254	70.78	156,474	9,285,219	71.95	129,051	7,898,123	73.99	106,746	6,726,634	71.07	94,648
Environment, Earth, and Resources, Clayton H. Riddell Faculty of	4,528,765	40.56	111,656	4,311,225	38.72	111,344	3,081,573	33.72	91,387	2,210,544	31.72	69,689
Human Ecology	1,837,123	24.85	73,928	1,703,911	23.50	72,507	1,131,039	21.50	52,606	1,028,693	25.50	40,341
Kinesiology and Recreation Management	1,329,257	19.33	68,767	1,264,519	20.11	62,880	997,866	21.74	45,900	911,476	20.60	44,246
Law	89,500	22.5	3,978	79,304	22.50	3,525	68,102	21.50	3,168	54,030	21.50	2,513
Medicine	56,493,908	209.9	269,147	45,702,962	208.69	218,999	48,830,809	196.87	248,036	43,639,776	180.31	242,026
Music	1,769	27.15	65	6,636	22.30	298	-	20.00	-	4,700	20.30	232
Natural Resources Institute	-	-	N/A	-	-	N/A	-	-	N/A	-	-	N/A
Nursing	1,182,787	64	18,481	1,260,433	61.20	20,595	931,659	71.20	13,085	683,941	76.20	8,976
Pharmacy	1,451,112	19.24	75,422	1,714,749	20.09	85,353	1,166,733	18.48	63,135	1,305,976	17.58	74,288
Science	7,063,127	167.95	42,055	7,160,997	166.84	42,921	7,137,529	165.00	43,258	7,099,368	165.18	42,980
Social Work	532,946	45	11,843	600,928	46.80	12,840	813,503	46.80	17,383	283,053	43.80	6,462
Other ³	7,050,423	5	N/A	6,794,591	0.50	N/A	7,809,317	1.00	N/A	8,219,334	0.50	N/A
Total	\$ 109,148,704	1,280.35	\$ 85,249	\$ 96,222,320	1,246.25	\$ 77,209	\$ 91,089,329	1,223.61	\$ 74,443	\$ 83,499,711	1,201.10	\$ 69,519

1. Research funds are obtained from both federal and provincial granting agencies and other public and private sources. Some examples of the respective granting agencies include: NSERC, the Medical Research Council, the Health Research Council, and the National Cancer Institute of Canada. Also includes research contracts.

2. FTE's are derived from the IS Book table 'Full-Time Equivalent Academic and Support Staff Positions, (As at April 1)'. The figures include the FTE's for Academic Units that provide a teaching service minus Special Academic FTE's.

3. The 'Other' category includes non-teaching units that received research revenues. Some examples of these units include: Graduate Studies, University 1, Libraries, and Student Services. For this table Graduate Studies is viewed as an administrative unit only. The FTE value shown in the 'Other' category belongs to University 1 and is included in the 'Total \$/FTE Staff'.

CANADIAN FOUNDATION FOR INNOVATION AND MANITOBA INNOVATION FUND AWARDS¹
As at March 31st

Faculty/School/Unit	2007			2006			2005		
	CFI	MIF	Total \$ CFI and MIF	CFI	MIF	Total \$ CFI and MIF	CFI	MIF	Total \$ CFI and MIF
Agricultural & Food Sciences	\$ 199,598	\$ 2,574,598	\$ 2,774,196	\$ 99,697	\$ 2,467,508	\$ 2,567,205	\$ 197,303	\$ 2,579,492	\$ 2,776,795
Architecture							(162)	(166)	(328)
Arts	92,283	92,283	184,566				80,839	80,646	161,485
Art, School of									
Business, Asper School of									
Dentistry									
Education									
Engineering	225,000	229,575	454,575	299,709	829,423	1,129,132	(305)	(263)	(568)
Environment, Earth, and Resources, Clayton H. Riddell Faculty of	1,810,604	1,810,604	3,621,208	(146,663)		(146,663)			
Human Ecology				99,499	99,499	198,998			
Kinesiology & Recreation Management							(184)		(184)
Law									
Medicine	468,617	692,155	1,160,772	682,394	792,793	1,475,187	7,257,202	3,541,451	10,798,653
Music									
Nursing									
Pharmacy									
Science	300,000	300,000	600,000	487,329	490,028	977,357	3,059,848	3,055,168	6,115,016
Social Work									
Centre on Aging				125,000	125,000	250,000			
Total	\$ 3,096,102	\$ 5,699,215	\$ 8,795,317	\$ 1,646,965	\$ 4,804,251	\$ 6,451,216	\$ 10,594,541	\$ 9,256,328	\$ 19,850,869

1. The values in this table do not include the 20% matching funds that the University of Manitoba is required to provide.

CFI & MIF are matched funds, but amounts may not match in any given year due to the financial year in which the transactions were recorded.